



Proposed Sandbrock Ranch Elementary Rezoning Plan

Project Leadership Team

1. Dr. Jeff Russell,
Area Superintendent

2. Ms. Susannah O'Bara,
Assistant Superintendent

3. Mrs. Michelle Box, Zonda Demography
Lead Demographer

4. Ms. Julie Zwahr,
Director of Communications

5. Dr. Sheryl Alden,
Director of Transportation

Feedback Requested

1. As the meeting goes tonight, please write down your questions on the comment cards.
2. We will collect these at the end of the meeting and try to address every question.
3. We will be collecting feedback. You are free to express your thoughts.
4. We will share these with our school board prior to their decision making.

Agenda

Goals

Current Boundary and Context

Area Scheduled for Rezoning

Proposal

Proposal Projections

Break

Questions

Goals for the Proposal

Equity

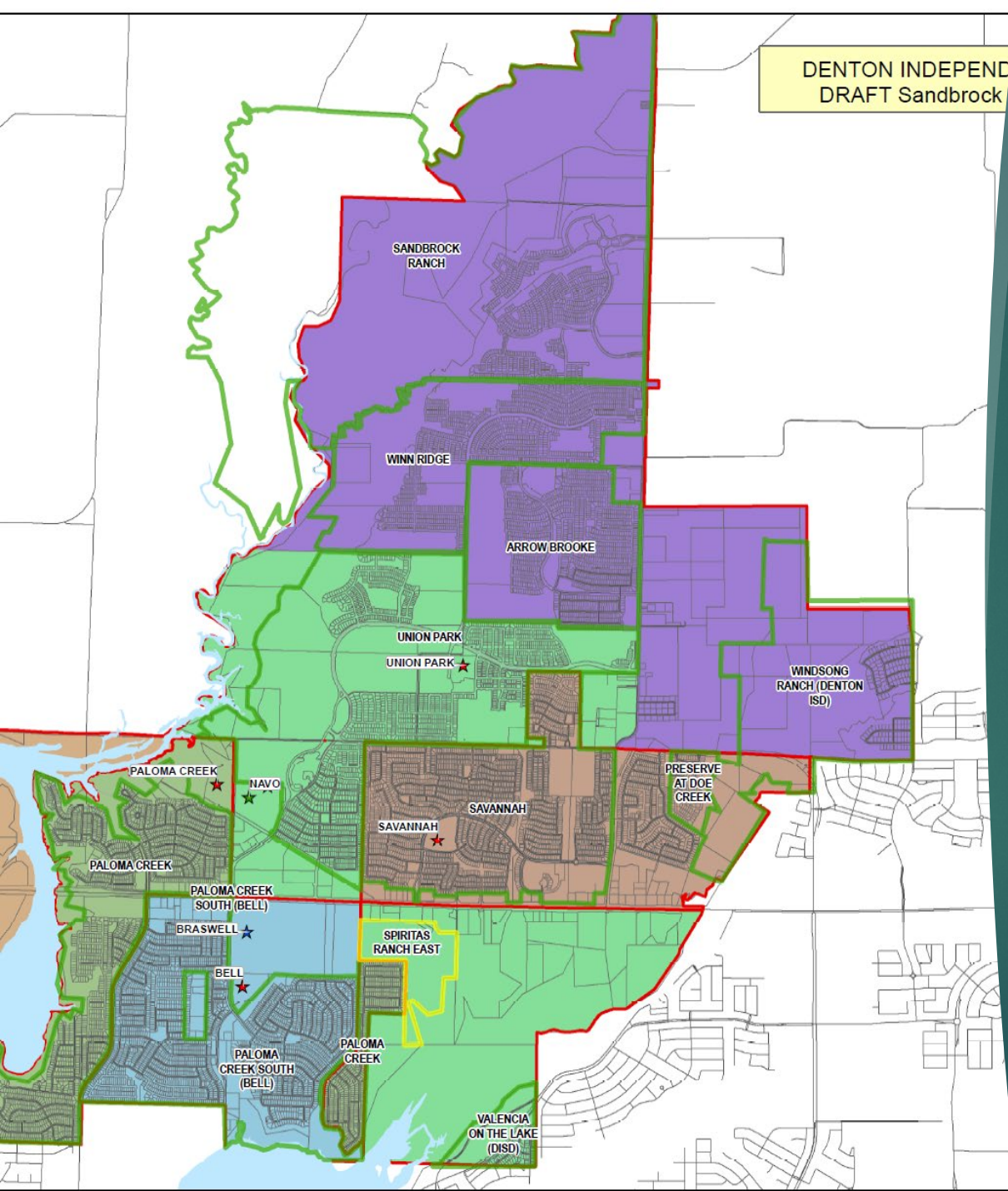
Provide equity in services. Our current model of elementary schools is built to serve 750 students.

Relationships

Work to rezone families as few times as possible in order to build lasting relationships at each campus.

Access

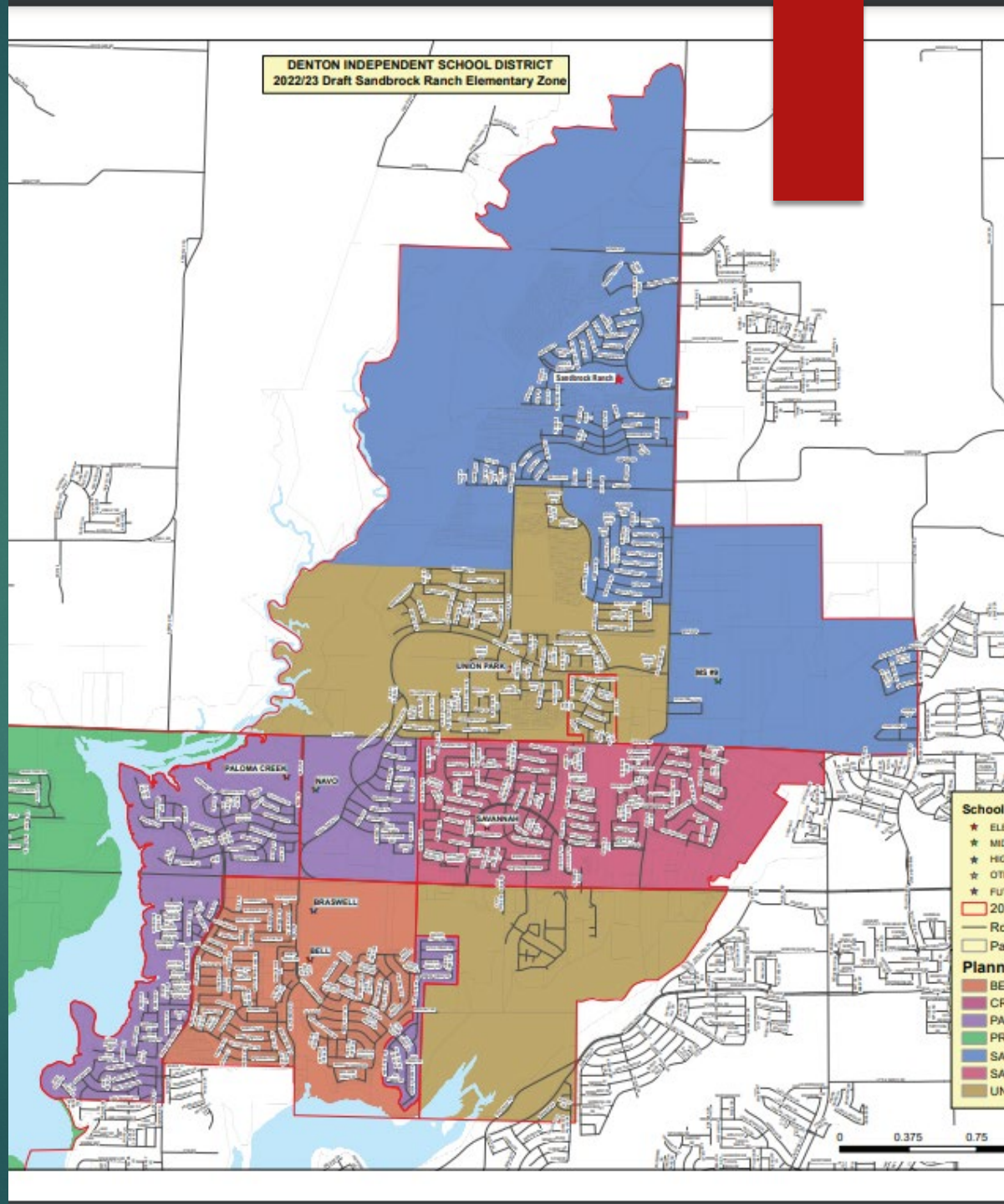
Set boundaries as close to their neighborhood schools as possible.



Current Boundaries

DENTON INDEPENDENT SCHOOL DISTRICT
2022/23 Draft Sandbrook Ranch Elementary Zone

Current Proposal



Projections for Proposal

School	22/23	23/24	24/25	25/26	26/27	27/28
Savannah	744	779	803	797	814	814
Union Park	594	752	847	934	969	1030
Paloma Creek	837	859	854	858	854	880
Sandbrock Ranch	631	792	854	940	955	1050

Commitment Forms

- ▶ Families who will be rezoned will have the opportunity to remain at their current campus.
- ▶ If your family chooses to remain at your current campus, commitment forms will be available online.
- ▶ Families who choose to remain on their current campus, will complete commitment forms and return the forms to the district by March 1, 2022.

The Process

1. Two scheduled meetings for getting feedback
 - a. Tuesday, Nov. 9 - Union Park at 6 p.m.
 - b. Thursday, Nov. 11 - Navo Middle at 6 p.m.

2. Feedback online www.dentonisd.org/rezone

3. The next scheduled board meeting:
Tuesday, Nov. 16 at 6 p.m.
Central Services Board Room,
1307 N. Locust St. , Denton, TX 76201

Proposal will be finalized at the Board Meeting on December 14, 2021.

Frequently Asked Questions

Q. My child is receiving Special Education services at our current campus. Will those be available at the new campus?

A. Special Education programs will be addressed on a case-by-case situation.

Q. My child is zoned for Union or Savannah, and we want to remain at our current school, how do we ensure that we grandfathered in?

A. Commitment cards will be provided pending board approval. Families who wish to remain in their current campus will be required to complete the Commitment Card prior to March 1.

Q. Our home is scheduled for rezoning, and we are excited to change schools. Moving forward, what steps do we take?

A. We will filter the commitment cards as we begin the staffing process for next year. Those who do not turn in a commitment card will be shifted to their new campus.

Frequently Asked Questions

- Q.** If I reside in an area affected by rezoning and choose for my student to remain at their current campus, will they receive transportation?
- A.** Students that reside outside of their respective zones will be considered 'transfer students' and will not be eligible for transportation.



Questions & Feedback

10-minute recess



Proposed Evers Park Elementary Rezoning Plan

Goals for the Proposal

Equity

Provide equity in services. Historically, elementary schools were built to serve 750 students.

Relationships

Work to rezone families as few times as possible in order to build lasting relationships at each campus.

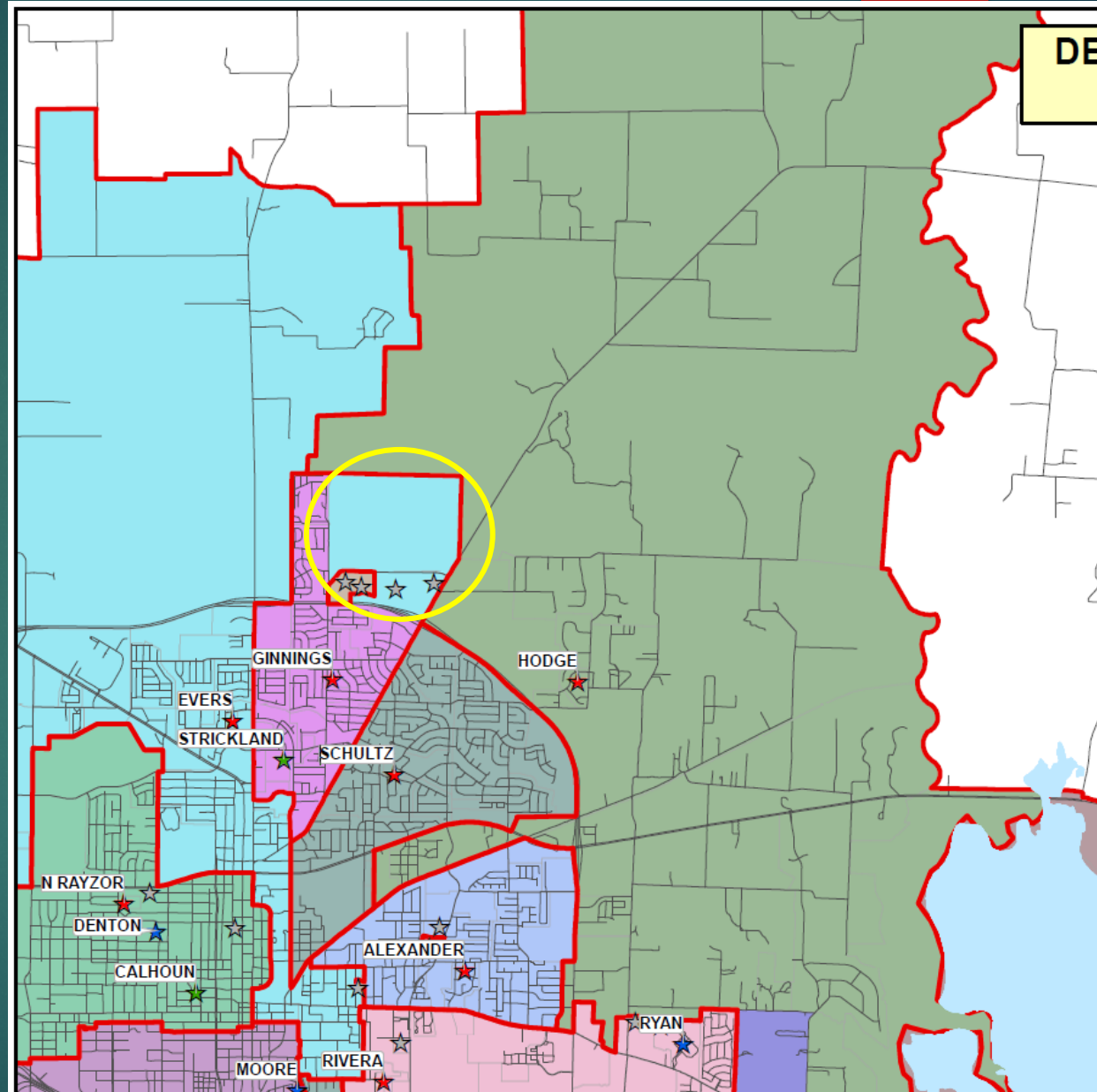
Long-Term Planning

As the area north of University continues to grow, we want to proactively look to rezone boundary lines to ensure equity in campuses.

Proposal

Rezone the area north of Long Road to Evers Park Elementary from Ginnings Elementary.

- This includes Stark Farms which is already under development.
- This includes a future development to the west of Stark Farms.



Current Projections

(based on 2Q Projections)

School	22/23	23/24	24/25	25/26	26/27	27/28	28/29
Evers Park	654	697	706	758	786	792	800
Ginnings	740	821	891	966	1,017	1,013	1,006

Projections for Proposal

School	22/23	23/24	24/25	25/26	26/27	27/28	28/29
Evers Park	678	768	822	917	987	995	1,012
Ginnings	716	750	775	807	816	810	794

Frequently Asked Questions

Q. We currently reside in Stark Farms and our children attend Ginnings. Do we have to change schools?

A. 4th graders who will be 5th grade students in the fall may continue to attend Ginnings if the parent is willing to transport the student. Siblings of the 5th grader may request a transfer for 1 year only.

Q. Will there be transportation to Evers Park Elementary?

A. Yes, district bus transportation will be provided to Evers Park Elementary.

Q. We live in Stark Farms and my child receives special education services. Do I have to move my child?

A. Students enrolled in a Special Education program will be considered on a case-by-case basis.

Q. What does this mean for middle school?

A. The area that is being discussed for rezoning from Ginnings Elementary to Evers Park Elementary will attend Calhoun Middle School.



Proposed Hodge/Stephens Elementary Rezoning Plan

Goals for the Proposal

Equity

Provide equity in services. Historically, elementary schools were built to serve 750 students.

Relationships

Work to rezone families as few times as possible in order to build lasting relationships at each campus.

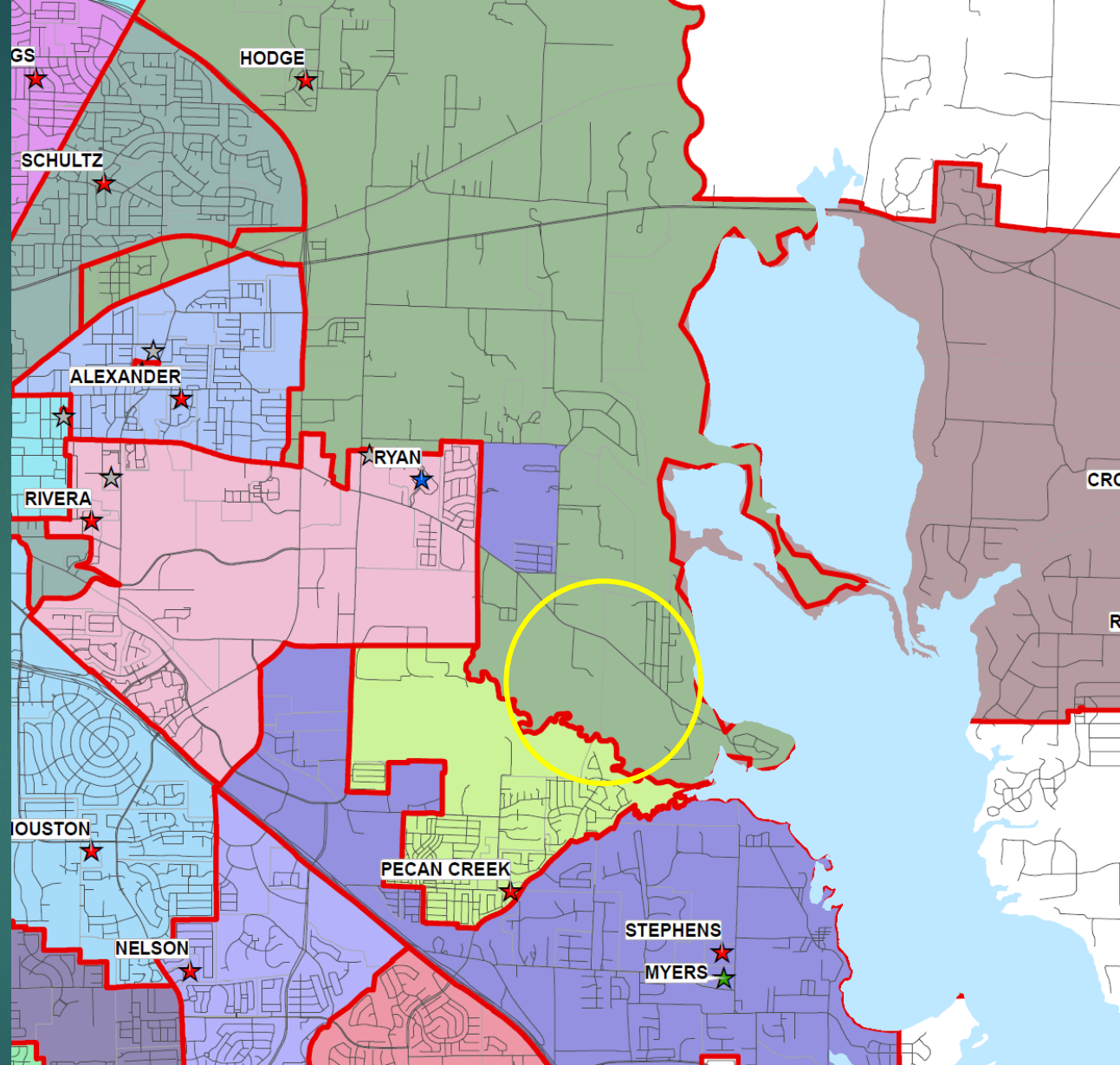
Long-Term Planning

In anticipation of a new mobile home development, we want to proactively look to rezone boundary lines to ensure equity in campuses.

Proposal

Rezone the anticipated mobile home development on McKinney and adjacent to Ashley Oaks from Hodge Elementary to Stephens Elementary.

- There are currently no students housed in this area because it is a future site.



Current Projections

(based on 2Q Projections)

School	22/23	23/24	24/25	25/26	26/27	27/28	28/29
Hodge	693	753	827	916	987	1,053	1,108
Stephens	485	528	570	612	663	691	701

Projections for Proposal

School	22/23	23/24	24/25	25/26	26/27	27/28	28/29
Hodge	577	617	674	759	810	851	882
Stephens	601	664	723	769	840	893	927