

2013-2014 District 97 Special Education Status and Plan



Michael J. Padavic, LCSW
Director

2012-2013 What We Accomplished

- Built strong Professional Team
 - Consistent meetings, feedback, and development opportunities were offered
 - Consistency in curriculum and service provided throughout the district
- Worked with appropriate parent groups to create parent advisory goals
 - Expanded the circle to engage even more parents
- Expanded Teacher Assistant Training Program
 - Identify and implement best practices

2012-2013 What We Accomplished

Cont.

- Continue to be involved in Parent Educator Partnership program.
 - Parent Advisory Committee met on the second Mondays of the month
 - Parent Information night for incoming 6th graders
 - Parent Support Groups are offered
 - Monthly Early Childhood and K-5 Families
 - Quarterly Middle School low incidence parent meeting
- Parent/Community Resource Fair in January 2013
 - Upcoming Parent/Community Resource Fair at Julian Middle School
October 19, 2013
 - Partnering with OPRF and Community Mental Health Board
- Held Parent Group workshops
 - “Teach Don’t Punish” Behavior Change in Children with Learning Differences by Alice Belgrade-Moss
 - “Parents and School Partnership in Understanding the Special Education Terminology and the IEP Process” by Beth Kaplan, Donna Brown, Christa Petty and Mike Padavic
 - “Fostering Student Skills over the Summer “ by Sarah Rose

2012-2013 What we Accomplished

Cont. - Parent Survey

- First year administered exclusively electronically
 - Hard copies were provided for the families at the schools that do not have access to the internet
- 61 responded - decrease of 15 from previous year
- Positive results indicated;
 - Equal partner
 - Parents concerns were documented
 - Reports & evaluations were written in terms they understood
 - Treated as member of team
 - Teachers and staff were sensitive to child's needs
 - Teachers and staff encouraged their input
- Identified needs continue to be:
 - Continue to improve communication about resources, state assessments, and extra curricular activities

2012-2013 What We Accomplished

Cont.

- Students participated in Special Olympics
 - Uniforms & equipment funded by Jeffrey Allen Gates Foundation
- Improved inclusion opportunities
 - Alice Belgrade-Moss
 - Chris Flint
- Medicaid
 - FY 2013 \$435,329

Continued Needs - Things to Watch

- Funding
 - Sequester cuts in January 2013 lost 5% of IDEA grant
- Support Implementation of Common Core standards
- Support Implementation of I.B. in middle schools
- Improve use of Data Collection
 - Implementing universal progress monitoring tools (Dibels Next, Moby Max and Aimsweb)
- Binder supplied to store all students data
 - Progress monitoring of student goals
 - District and State assessment data
 - Staff will use data to inform decision to increase student achievements.

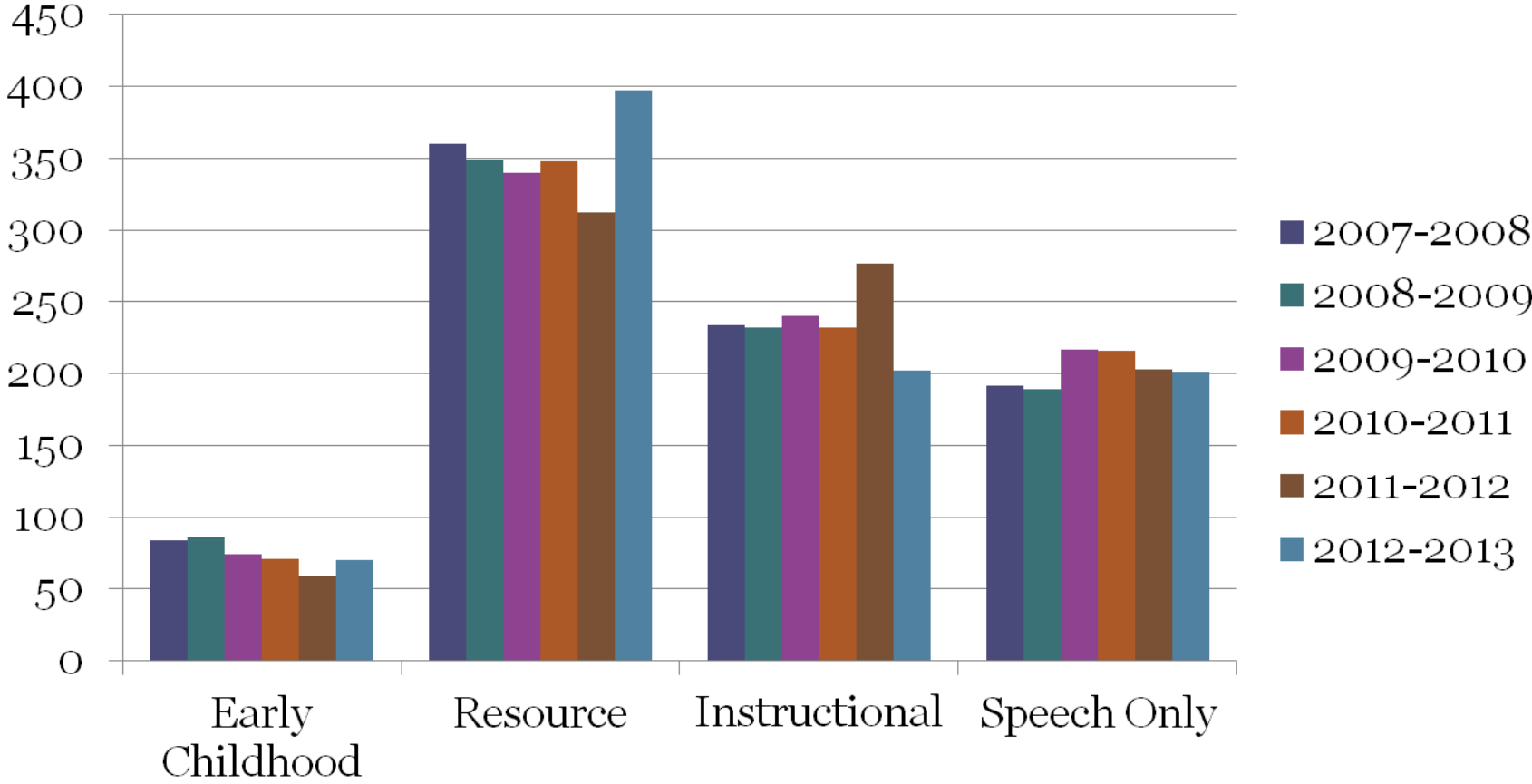
Continued Needs - Things to Watch Cont.

- Follow up with the accessibility committee recommendations with the FAC committee
- Disproportionality
- Increase the use of technology in the instruction of our students
- Monitor the increase number of Special Education referrals both internal and external
- Monitor the increase number of Early Childhood students
 - Explore Early Childhood Center

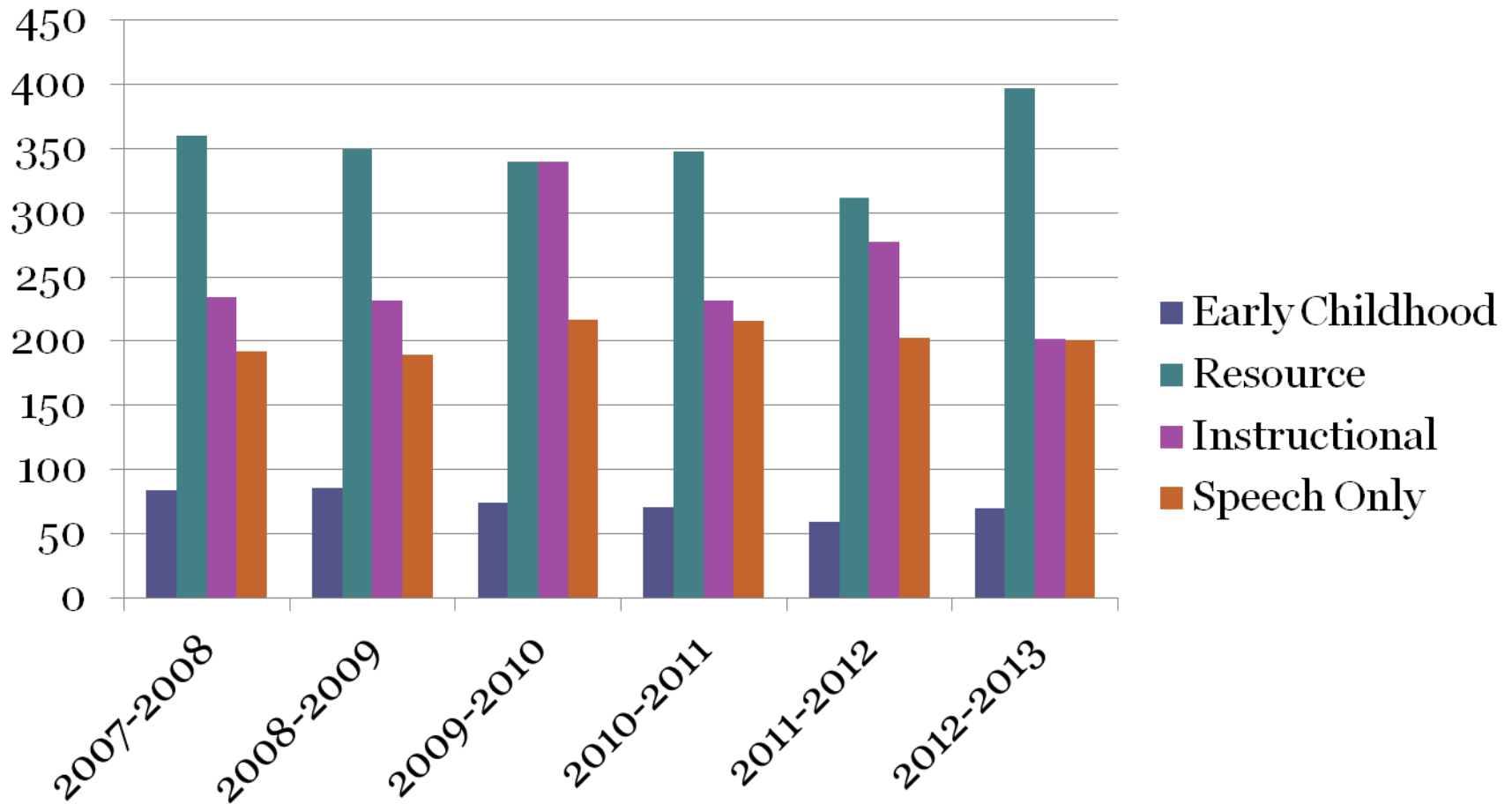
Review of In-District Placements

School Year	ECE	Resource	Instructional	Speech	Total
2007-2008	84	360	234	192	870
2008-2009	86	349	232	189	856
2009-2010	74	340	240	217	871
2010-2011	71	348	232	216	867
2011-2012	59	312	277	203	851
2012-2013	70	397	202	201	870

Program Analysis



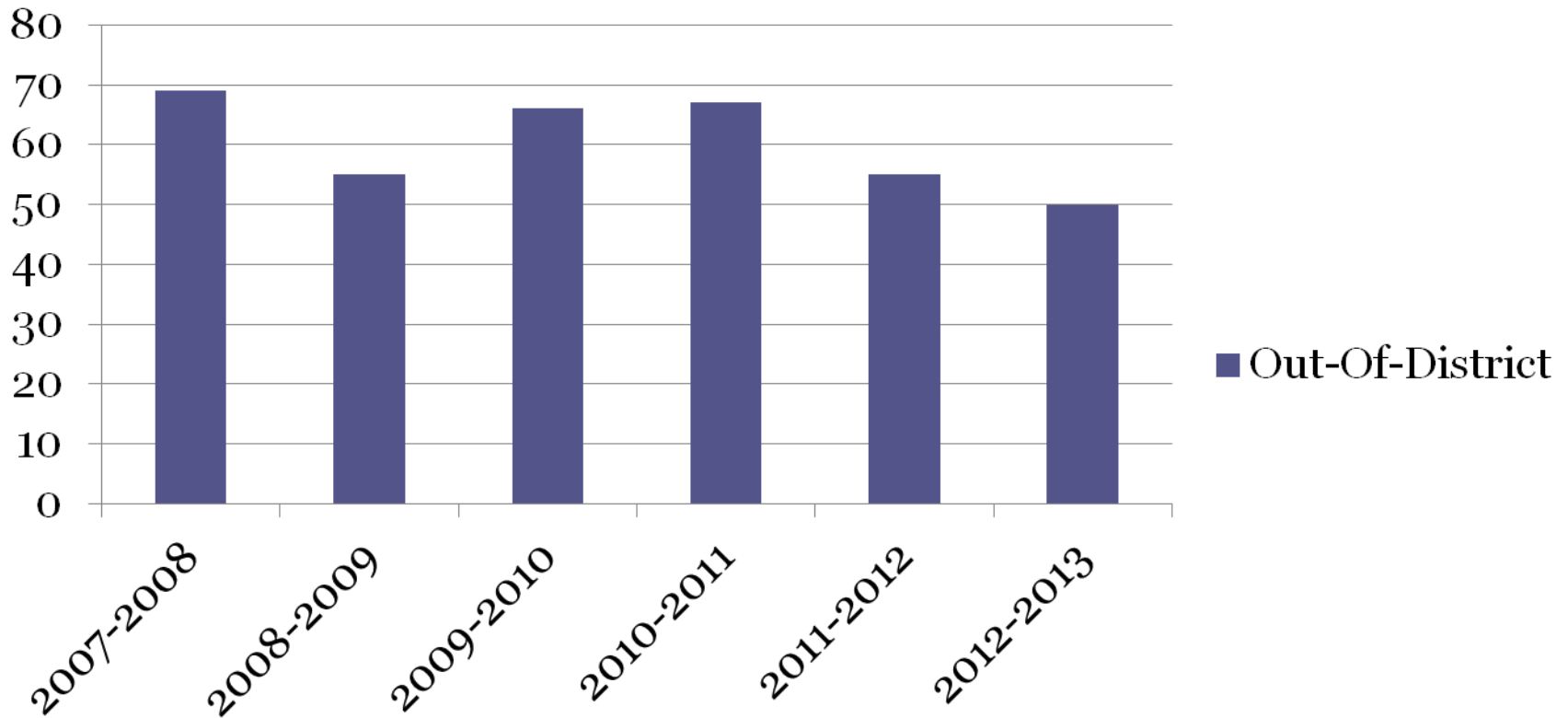
Program Analysis-trends in years



Out-Of-District Placements

School Year	Totals
2007-2008	69
2008-2009	55
2009-2010	66
2010-2011	67
2011-2012	55
2012-2013	50

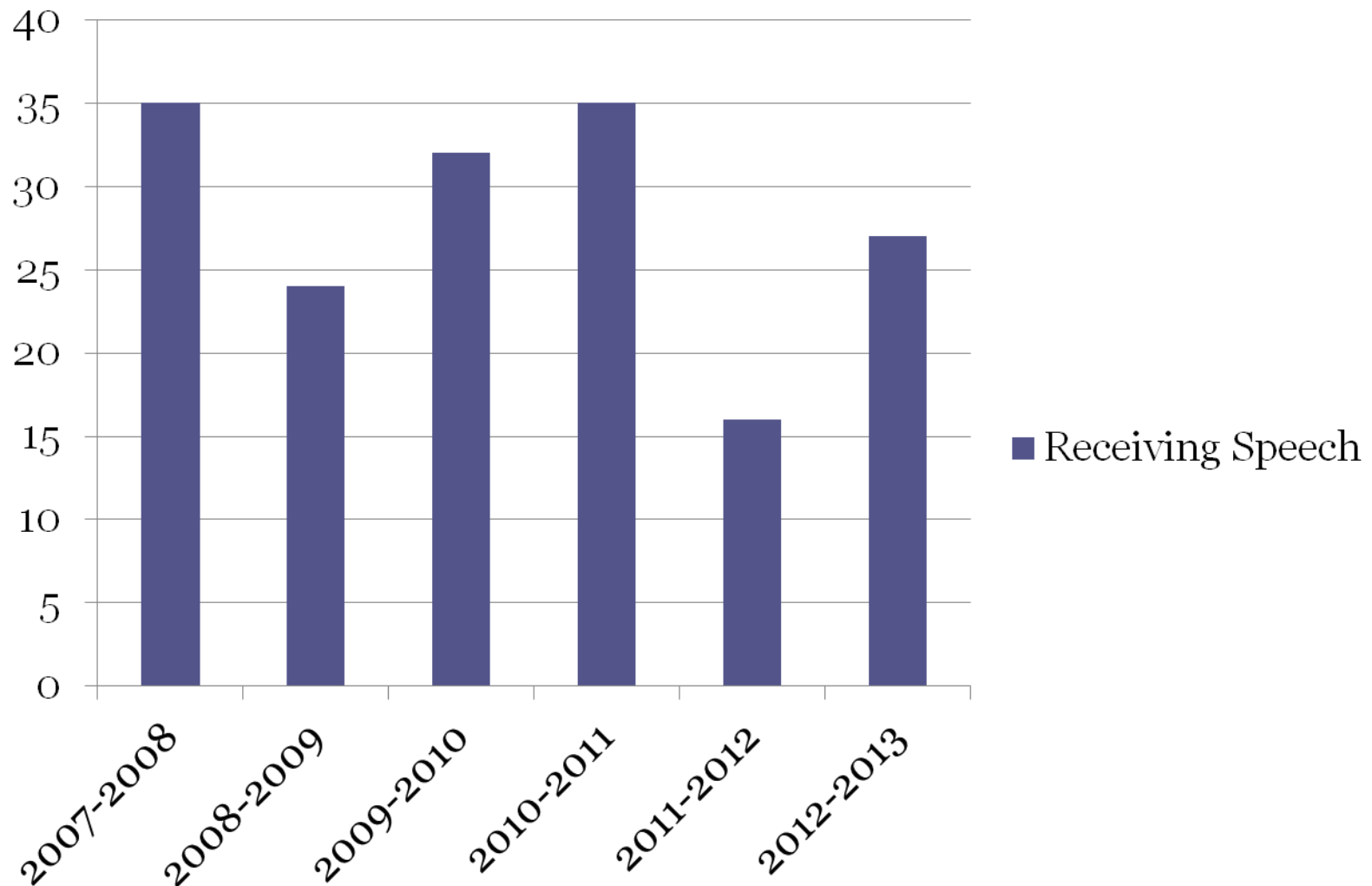
Out-Of-District Placement



Private/Parochial Placements

School Year	Totals
2007-2008	35
2008-2009	24
2009-2010	32
2010-2011	35
2011-2012	16
2012-2013	27

All Private/Parochial Students



December 1st Child Count

School Year	Total	IDEA Flow-through		IDEA ARRA Flow-through	
		Part B	Preschool	Part B	Preschool
2007-2008	892	\$1,155,075	\$46,686		
2008-2009	867	\$1,165,627	\$51,021		
2009-2010	851	\$1,261,655	\$50,645		
2010-2011	871	\$1,273,118	\$50,655	\$1,366,138	\$49,964
2011-2012	883	\$1,296,863	\$50,587		
2012-2013	867	\$1,320,982	\$37,786		
2013-2014	892	\$1,258,174	\$50,521		

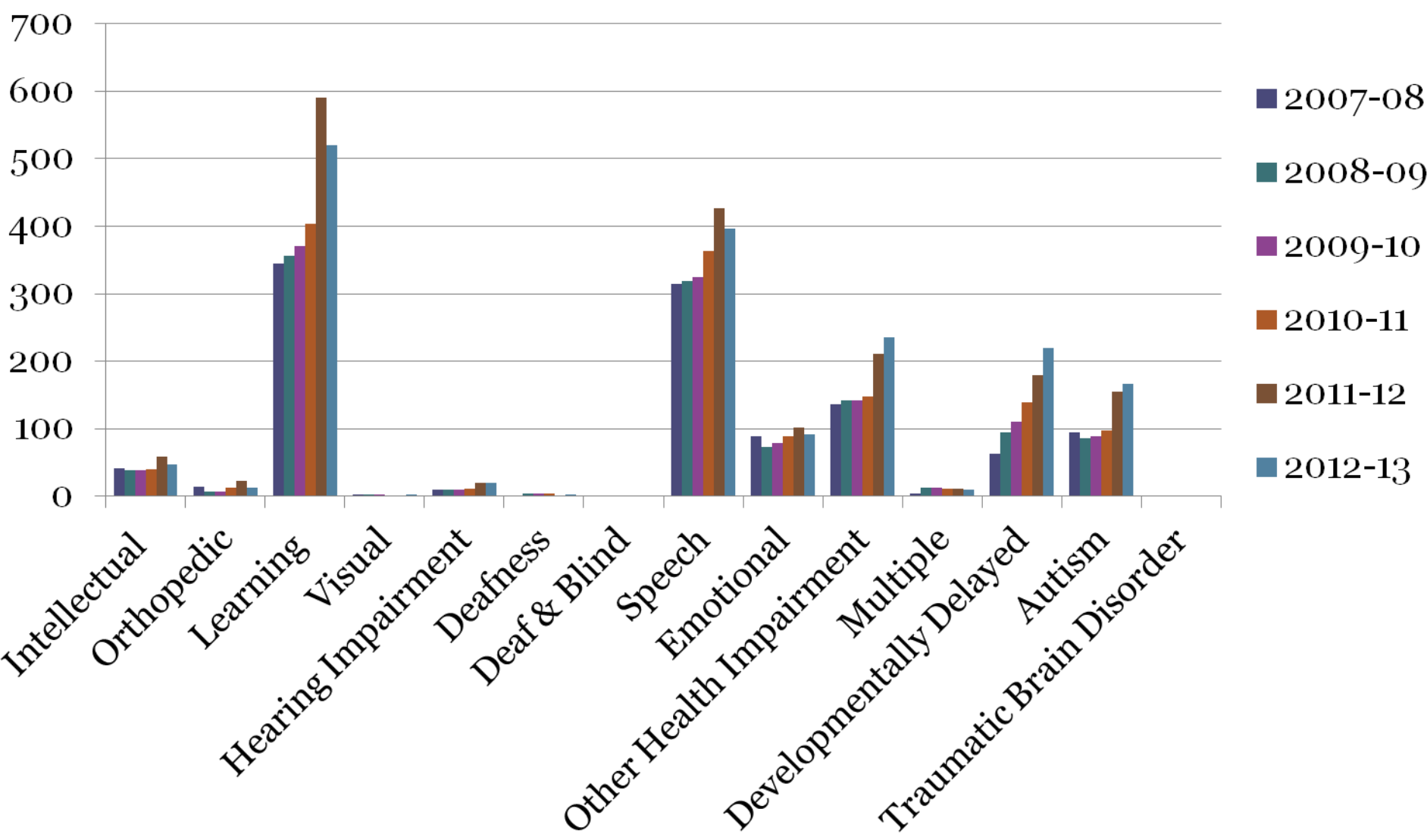
Demographic Information

Positions	Totals	
	2012-2013	2013-2014
Director	1	1
Assistant Director	1	1
Coordinators	4	4
Administrative Support Staff	4	4
Instructional Class Teachers	26	26
Resource Class Teachers	25	26
Speech & Language Pathologists	15	15
Physical Therapists	2	2
Occupational Therapists	5	5
Adapted P.E Teachers	1	1
School Psychologists	5	5
School Social Workers	12	13
School Nurses	8	8.5
Behavioral Interventionist	0	1

Range of Disabilities of all Students served

Disabilities	07-08	08-09	09-10	10-11	11-12	12-13
Intellectual	41	38	38	39	58	47
Orthopedic	14	7	7	12	23	12
Specific Learning Disability	345	356	370	404	591	520
Visual Impairment	2	2	2	1	1	2
Hearing Impairment	9	10	10	11	20	19
Deafness	1	3	3	3	1	2
Deaf & Blind	0	0	0	0	0	0
Speech	315	319	325	363	426	397
Emotional	89	73	79	89	101	91
Other Health Impairment	136	142	142	148	211	235
Multiple	4	13	13	11	11	9
Developmentally Delayed	63	95	110	139	179	219
Autism	94	86	89	97	155	166
Traumatic Brain Disorder	0	0	0	0	0	0

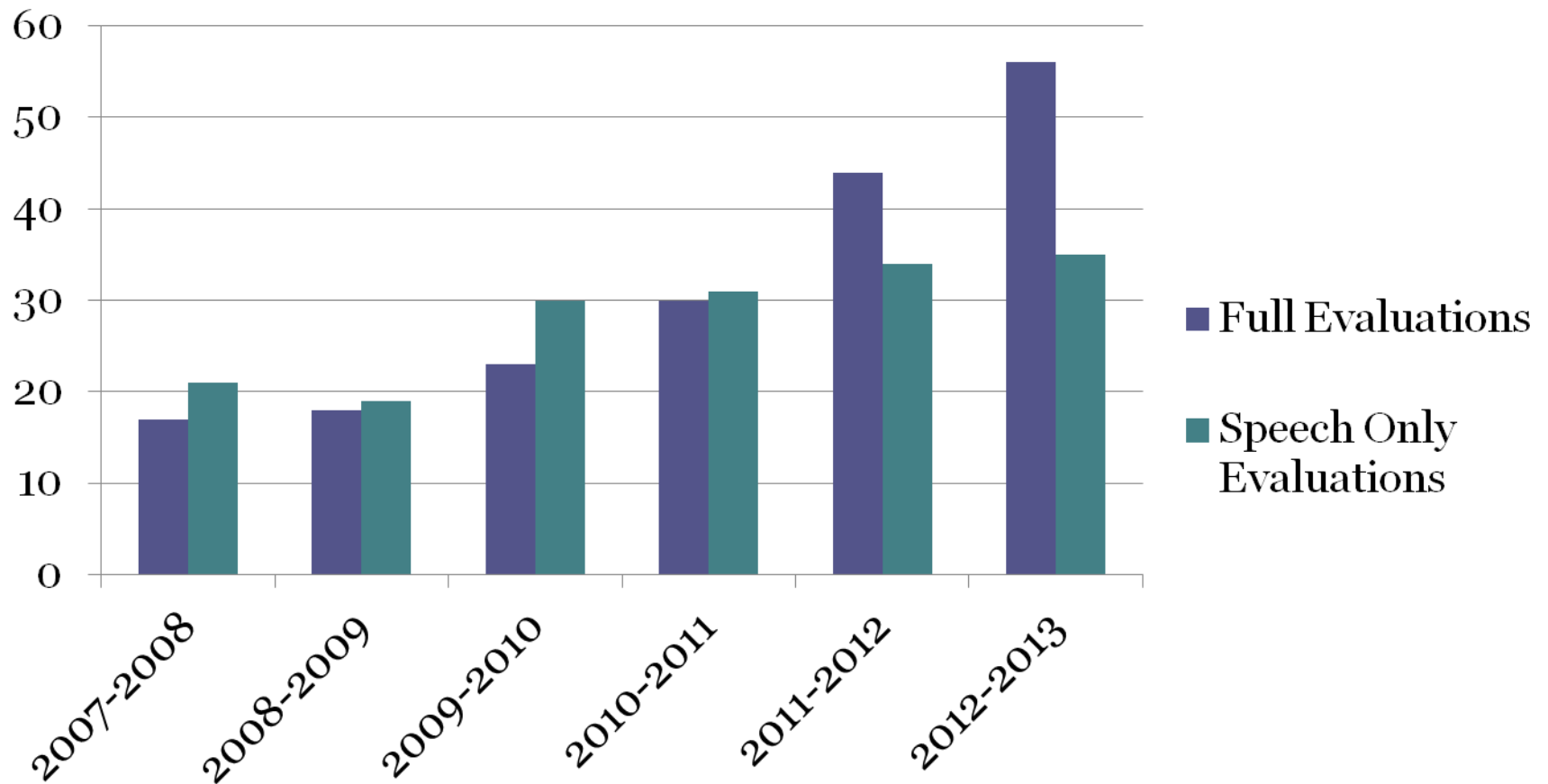
Disabilities of all Students served



Students Eligible for Special Education

Early Childhood Students	2007	2008	2009	2010	2011	2012
Early Childhood Evaluations	17	18	23	30	44	56
Early Childhood Speech Only	21	19	30	31	34	35
Totals	38	37	53	61	78	91

Early Childhood



Starting off 2013-2014 School Year

Early Childhood	Out-of-District	Resource	Instructional	Speech Only	Parochial		Total
55	40	370	194	218	Total 41	Servicing 27	918

2013-2014 School Year Breakdown

Disabilities	Totals
Intellectual	20
Orthopedic	7
Specific Learning Disability	258
Visual Impairment	3
Hearing Impairment	10
Deafness	2
Deaf & Blind	0
Speech	260
Emotional	35
Other Health Impairment	134
Multiple	6
Developmentally Delayed	101
Autism	82
Traumatic Brain Disorder	0



Questions?