

IMESD Service Providers

Special Education

106 FTE

Audiology Services
 Early Intervention/Early Childhood (EI/ECSE)
 Long-Term Care & Treatment
 Physical Therapy/Occupational Therapy
 Regional Programs
 School Psychology & Behavioral Services
 Special Education Administration
 Special Education Program/Child Find (Birth to 5)
 Speech/Language Program (SLP)
 Transition Network Facilitator

Administrative & Other Services 46 FTE

Administrative Services
 Business Services
 CARE Coordinators
 Communication & Print Solutions
 Cooperative Purchasing & Courier
 Facilities
 Federal Grants Collections
 Human Resources
 Medicaid
 Nurse Consultation
 RiverBend

Technology Support

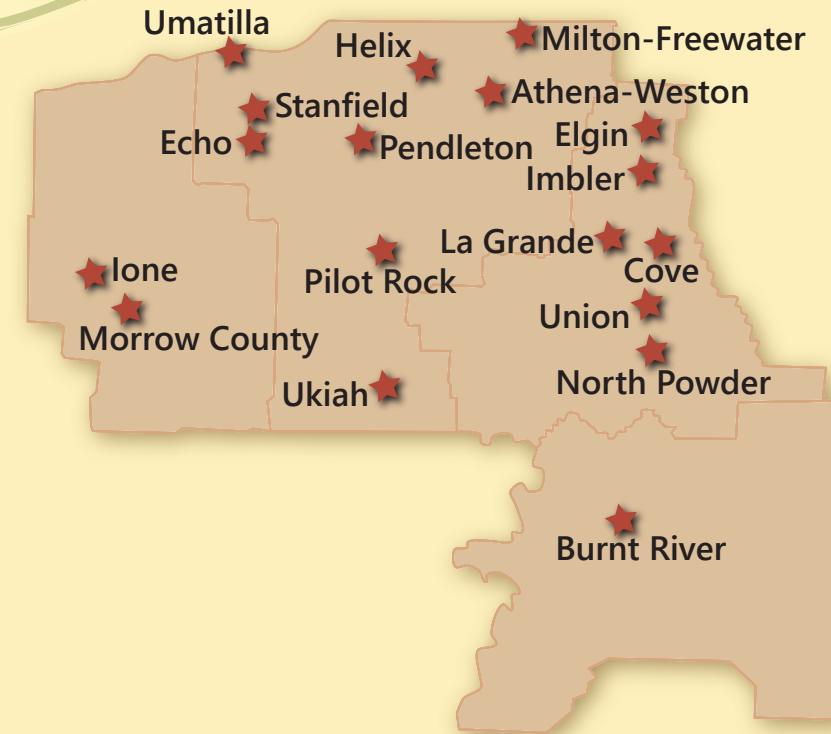
37 FTE

Analysts
 E-Rate
 Server Specialists
 Technology Specialists

Instructional Services

23 FTE

Assessment & Accountability
 Blue Mountain Early Learning Hub
 College & Career Preparation
 English Language Learners TOSA
 Instructional Coaches
 Instructional Services Administration
 InterMountain Online
 Migrant Education Program



"The IMESD consortium model is based on trust, relationships and effective listening. The IMESD strives to be nimble in responding to individual needs of our school districts. Our model increases capacity of services and focuses on students first."

- IMESD Board of Directors

Entrepreneurial Business Plans

Technology

Revenue	Expenditures	Net Income
\$5,717,312	\$5,576,710	\$140,602

Funding Sources: General Fund, Entrepreneurial Contracts

Communication & Print Solutions

Revenue	Expenditures	Net Income
\$286,916	\$273,511	\$13,405

Funding Sources: General Fund, Entrepreneurial Contracts

Cooperative Purchasing & Courier Service

Revenue	Expenditures	Net Income
\$1,043,382	\$948,423	\$94,959

Funding Sources: General Fund, Entrepreneurial Contracts

For more information about Entrepreneurial Business Plans, visit the IMESD website at www.imesd.k12.or.us/local-service-plan

2018-2019 Local Service Plan MAP

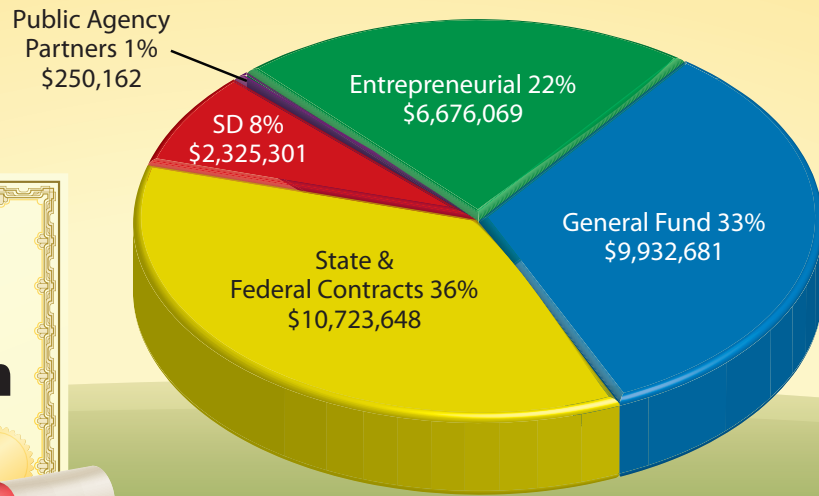
P-20 Educational Services

InterMountain ESD
 2001 SW Nye Ave | Pendleton, OR 97801
 541.966.3100 or 888.437.6892
www.imesd.k12.or.us

Building Color Scheme Key

- General Fund
- State & Federal Contracts
- Public Agency Partners
- School Districts
- Entrepreneurial

2017 ESD Revenue Detail



Did you know?

- The IMESD serves 18 component school districts.
- We serve 23,450 students in 4 counties.
- Each year, the IMESD receives \$350 per ADMw from the Basic School Support Fund (BSSF); school districts receive \$7,000 per ADMw from the State School Fund (SSF).
- Through the Local Service Plan process, the consortium allocates **General Fund** resources equitably across the region.

100% Graduation Rate



Kindergarten Readiness

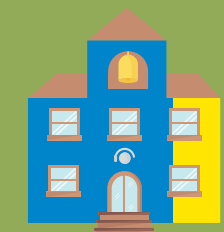


Early Intervention/Early Childhood Special Education Program

3rd Grade Reading



Instructional Services Assessment/Accountability Migrant Education



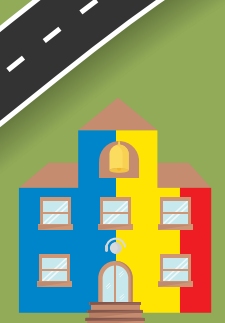
Audiology



Regional Programs



Admin Services



Nursing



Wellness Hubs/ Wraparound



School Security



Speech/Language Program School Psychology & Behavioral Services

High School Graduation



Freshman On-Track

