

January 22, 2019



Mr. Terrence Zerwas  
Becker Public Schools  
12000 Hancock Street  
Becker, MN 55308

**RE: Becker Public Schools  
Short-Term Radon Testing  
IEA Project #201810978**

Dear Mr. Zerwas:

As requested by Becker Public Schools, IEA placed 438 Air Chek Pro Chek short-term radon test kits in the following four (4) buildings for the purpose of evaluating radon levels:

- Becker Primary School – 120 samples
- Becker Middle School – 97 samples
- Becker Intermediate School – 87 samples
- Becker High Schools – 134 samples

The radon samples were placed by Amanda Edberg, RMEA-00041; Kennedy Peterson, RMEA-00046; and Chad Whaylen, RMEA-00043, certified radon measurement professionals.

## INTRODUCTION

Radon is a colorless, odorless, tasteless, radioactive gas that occurs naturally in soil, rocks, and underground water supplies and in the ambient air. According to the U.S. Environmental Protection Agency (EPA) and other scientific organizations, naturally occurring radon gas has been associated with an increased risk of developing lung cancer. The chances of developing lung cancer from radon exposure are dependent on several factors including individual susceptibility and, perhaps more importantly, the dose and duration of exposure. Radon testing in schools is highly recommended by the Minnesota Department of Health (MDH) and EPA.

IEA placed 438 Air Chek Pro Chek short-term radon test kits in frequently occupied areas in the buildings listed above at Becker Public Schools for the purpose of sampling for radon in accordance with the MDH's *Guidance for Radon Testing in Minnesota Schools* (2018) and ANSI/AARST 'Protocol for Conducting Measurements of Radon and Radon Decay Products in Schools and Large Buildings' (ANSI/AARST MALB 2014). A total of 438 radon test kits were placed from December 18, 2018, to December 21, 2018, for a total short-term sampling period of three (3) days. The test kits were analyzed by Air Chek, Inc. 1936 Butler Bridge Road, Mills River, NC 28759. The sampling and analysis methodologies are provided in Appendix A. IEA followed quality assurance methods by including duplicate kits and control kits (blanks).

INSTITUTE FOR ENVIRONMENTAL ASSESSMENT, INC.  
[www.ieasafety.com](http://www.ieasafety.com)

BROOKLYN PARK  
9201 West Broadway, #600  
Brooklyn Park, MN 55445  
763-315-7900 / FAX 763-315-7920  
800-233-9513

MANKATO  
610 North Riverfront Drive  
Mankato, MN 56001  
507-345-8818 / FAX 507-345-5301  
800-233-9513

ROCHESTER  
210 Woodlake Drive SE  
Rochester, MN 55904  
507-281-6664 / FAX 507-281-6695  
800-233-9513

BRAINERD  
601 NW 5<sup>th</sup> Street, Ste. #4  
Brainerd, MN 56401  
218-454-0703 / FAX 218-454-0703  
800-233-9513

MARSHALL  
1420 East College Drive  
Marshall, MN 56258  
507-476-3599 / FAX 507-537-6985  
800-233-9513

VIRGINIA  
5525 Emerald Avenue  
Mountain Iron, MN 55768  
218-410-9521  
800-233-9513

## EVALUATION CRITERIA

The MDH and the EPA have established a recommended action level in frequently occupied areas of 4.0 picoCuries per liter (pCi/L) for an annual average. Testing was conducted during the winter, as recommended by the MDH, when the ventilation system was operating normally and windows and doors were closed. Consequently, sampling under these “closed” conditions should be considered “worst case.” The MDH recommends follow-up testing for sampling results that are above the action level. Please refer to the following table for MDH guidelines:

RESULTS (pCi/L)	RECOMMENDED ACTION
LESS THAN 4	Consider re-testing after changes to foundation or HVAC and every 5 years
GREATER THAN 4	Conduct CRM short-term testing during winter months
LESS THAN 4 ( <u>DURING OCCUPANCY</u> ) AFTER CRM TESTING	Repeat CRM testing if not conducted during winter or if conducted during abnormal ventilation. Otherwise consider re-testing after changes to foundation or HVAC and every 5 years
GREATER THAN 4 ( <u>DURING OCCUPANCY</u> ) AFTER CRM TESTING	Reduce radon in rooms to less than 4 through radon mitigation. Conduct CRM testing to verify radon reduction.

CRM: Continuous Radon Monitor

## RESULTS & DISCUSSION

The laboratory report, which includes sampling locations, and maps of each building with sampling locations is provided in Appendix B. The Chain of Custody is provided in Appendix C. Following are summary results for each building.

### ***BECKER PRIMARY SCHOOL***

A total of 120 test kits were placed at Becker Primary School. The results indicated that radon levels were below the action level of 4 pCi/L. See Table 1 below for a summary of the results.

TABLE 1: Becker Primary School Range of Results				
	0.0 – 1.9 pCi/L	2.0 – 2.9 pCi/L	3.0 – 3.9 pCi/L	≥ 4 pCi/L
<b>Number of Tests</b>	103	15	2	0
All below action level				

pCi/L: picocuries per liter

### ***BECKER INTERMEDIATE SCHOOL***

A total of 87 test kits were placed at Becker Intermediate School. The results indicated that radon levels were below the action level of 4 pCi/L. See Table 2 below for a summary of the results.

TABLE 2: Becker Intermediate School Range of Results				
	0.0 – 1.9 pCi/L	2.0 – 2.9 pCi/L	3.0 – 3.9 pCi/L	≥ 4 pCi/L
<b>Number of Tests</b>	86	1	0	0
All below action level				

pCi/L: picocuries per liter

**BECKER MIDDLE SCHOOL**

A total of 97 test kits were placed at Becker Middle School. The results indicated that radon levels were below the action level of 4 pCi/L. See Table 3 below for a summary of the results.

<b>TABLE 3: Becker Middle School Range of Results</b>				
	<b>0.0 – 1.9 pCi/L</b>	<b>2.0 – 2.9 pCi/L</b>	<b>3.0 – 3.9 pCi/L</b>	<b>≥ 4 pCi/L</b>
<b>Number of Tests</b>	93	3	1	0
All below action level				

pCi/L: picocuries per liter

**BECKER HIGH SCHOOL**

A total of 134 test kits were placed at Becker High School. The results indicated that radon levels were below the action level of 4 pCi/L. See Table 4 below for a summary of the results:

<b>TABLE 4: Becker High School Range of Results</b>				
	<b>0.0 – 1.9 pCi/L</b>	<b>2.0 – 2.9 pCi/L</b>	<b>3.0 – 3.9 pCi/L</b>	<b>≥ 4 pCi/L</b>
<b>Number of Tests</b>	120	12	2	0
All below action level				

pCi/L: picocuries per liter

**CONCLUSIONS & RECOMMENDATIONS**

The radon levels in the sampled locations were below the EPA action level of 4 pCi/L.

The EPA has established recommended guidelines for permissible radon concentrations in schools. The following are general recommendations for frequently-occupied areas of schools:

- Retest the building at least every 5 years and in conjunction with any sale of a building.
- In addition, be certain to test again when any of the following circumstances occur:
  - A new addition is constructed, or a significant renovation occurs
  - A ground contact area not previously tested is occupied
  - Heating or cooling systems are significantly altered resulting in changes to air pressures or distribution
  - Ventilation is significantly altered by extensive weatherization, changes to mechanical systems or comparable procedures
  - Significant openings to soil occur due to:
    - Ground water or slab surface water control systems (e.g., sumps, perimeter drain tile, shower/tub retrofits, etc.) or
    - Natural settlement causing major cracks to develop
  - Earthquakes, construction blasting, or formation of sink holes nearby or
  - A mitigation system is altered, modified or repaired
- Rooms should be retested during the winter heating season (i.e. under “closed” conditions) which is typically “worst case” conditions.
- Per Minnesota Statutes, section 123B.571, school districts are required to report radon test results at a school board meeting and report results to the MDH. IEA is able to assist with presenting results to the school board, and the MDH reporting. The MDH ‘School Radon Testing Form’ is located in Appendix D.

For more information regarding radon, see the EPA's A Citizen's Guide to Radon at <http://www.epa.gov/radon>. MDH can be contacted at [health.indoorair@state.mn.us](mailto:health.indoorair@state.mn.us) or 651-201-4601.

## GENERAL COMMENTS

The analysis and opinions expressed in this report are based upon data obtained from radon sampling district-wide and are representative of the locations and time period sampled. This report does not reflect variations in conditions that may occur across the site, property, or facility. Actual conditions may vary and may not become evident without further assessment.

The report is prepared for the exclusive use of our client for specific application to the project discussed and has been prepared in accordance with generally accepted environmental, health and safety practices. Other than as provided in the preceding sentence and in our Proposal #7405 dated August 21, 2018, regarding radon sampling services at the district locations, including the General Conditions attached thereto, no warranties are extended or made.

IEA appreciates the opportunity to submit this analysis to Becker Public Schools. Should you require additional radon testing or have any questions regarding radon or any other environmental, health, or safety-related concerns, please do not hesitate to contact our office.

Sincerely,

IEA, Inc.



Sara Dominicak  
Account Manager

SD/wb 012219

Enc.

# **Appendix A**

## *Methodology*

## **Sampling Methodology**

---

IEA placed Air Chek, Inc. ProChek activated charcoal radon test kits designed specifically for the detection of gamma emissions caused by the decay of Radon-222 and its daughter products. The kit is made of a padded envelope which contains activated charcoal. The kit is placed during normal occupancy HVAC operations and sealed with vinyl tape after 72 to 96 hours of indoor exposure. Individual kits are uniquely identified with a number and corresponding bar code.

Upon receipt at the analytical laboratory, the kits are logged in using the unique numbers assigned to each kit. The kits are placed on a gamma detector to count the gamma emissions from the decay of radon adsorbed by the charcoal. A calibration factor determined in part by the exposure time and decay time is used to calculate the radon concentration. A correction factor is also applied for weight gain from any moisture absorbed by the charcoal during the sampling period.

Any unusual conditions are noted on the processing form and shown on the exposure report.

## **MDH and ANSI/AARST MALB 2014 Quality Assurance Measurements**

IEA followed ANSI/AARST MALB 2014 and MDH recommendations for quality assurance measurements to ensure the accuracy of test results. Quality assurance measurements include side-by-side test kits (duplicates) and unexposed control test kits (blanks).

Duplicates are pairs of test kits placed 4-8 inches apart for the same test period. Duplicates are stored, placed, retrieved, and shipped to the laboratory for analysis in the same manner as the other test kits so that the laboratory cannot distinguish them. Since duplicates are placed side-by-side, the measured values for radon should be the same. The average of all duplicates' relative percent difference (RPD) should not exceed 25%. If they do, an investigation to identify the cause may be warranted and could include repeating the measurements.

Blanks can be used to determine whether the manufacturing, shipping, storage, or processing of the detector has "contaminated" your measurements. Blanks are opened and immediately re-sealed to keep room air from infiltrating the test kit. Blanks are labeled and shipped in the same manner as the exposed test kits so that the laboratory cannot distinguish them. Since blanks are not exposed to radon, their measurement value should be below the lower limit of detection.

# **Appendix B**

## *Laboratory Results Maps*

Radon test result report for:

**BECKER PUBLIC SCHOOL  
BECKER MIDDLE SCHOOL**

Kit #	Room Id	Started	Ended	pCi/L	Analyzed
9139242	1 100	2018-12-18 @ 11:00 am	2018-12-21 @ 8:00 am	1.2 ± 0.3	2018-12-24
9139291	1 206	2018-12-18 @ 11:00 am	2018-12-21 @ 9:00 am	1.1 ± 0.4	2018-12-24
9139277	1 212	2018-12-18 @ 12:00 pm	2018-12-21 @ 9:00 am	1.6 ± 0.4	2018-12-24
9139247	1 305	2018-12-18 @ 11:00 am	2018-12-21 @ 8:00 am	1.4 ± 0.4	2018-12-24
9139274	1 309	2018-12-18 @ 11:00 am	2018-12-21 @ 8:00 am	1.0 ± 0.4	2018-12-24
9139212	1 503	2018-12-18 @ 9:00 am	2018-12-21 @ 9:00 am	1.3 ± 0.4	2018-12-24
9139211	1 512	2018-12-18 @ 9:00 am	2018-12-21 @ 10:00 am	0.6 ± 0.3	2018-12-24
9139206	1 700	2018-12-18 @ 10:00 am	2018-12-21 @ 9:00 am	0.7 ± 0.3	2018-12-24
9139216	1 800	2018-12-18 @ 9:00 am	2018-12-21 @ 9:00 am	0.9 ± 0.3	2018-12-24
9139215	1 803	2018-12-18 @ 9:00 am	2018-12-21 @ 9:00 am	1.0 ± 0.3	2018-12-24
9139289	1 907	2018-12-18 @ 12:00 pm	2018-12-21 @ 10:00 am	1.4 ± 0.4	2018-12-24
9139248	100	2018-12-18 @ 11:00 am	2018-12-21 @ 8:00 am	1.2 ± 0.4	2018-12-24
9139264	102	2018-12-18 @ 11:00 am	2018-12-21 @ 8:00 am	1.2 ± 0.4	2018-12-24
9139255	103	2018-12-18 @ 10:00 am	2018-12-21 @ 9:00 am	1.0 ± 0.3	2018-12-24
9139229	104	2018-12-18 @ 10:00 am	2018-12-21 @ 9:00 am	1.2 ± 0.4	2018-12-24
9139234	105	2018-12-18 @ 10:00 am	2018-12-21 @ 9:00 am	1.3 ± 0.3	2018-12-24
9139235	107	2018-12-18 @ 10:00 am	2018-12-21 @ 9:00 am	0.9 ± 0.3	2018-12-24
9139263	108	2018-12-18 @ 10:00 am	2018-12-21 @ 9:00 am	2.0 ± 0.4	2018-12-24
9139270	2 201	2018-12-18 @ 11:00 am	2018-12-21 @ 8:00 am	< 0.3	2018-12-24
9139293	2 207	2018-12-18 @ 11:00 am	2018-12-21 @ 8:00 am	< 0.3	2018-12-24
9139243	2 702	2018-12-18 @ 10:00 am	2018-12-21 @ 8:00 am	< 0.3	2018-12-24
9139245	2 CAFETERIA	2018-12-18 @ 10:00 am	2018-12-21 @ 8:00 am	< 0.3	2018-12-24
9139296	2 FIELD HOUSE	2018-12-18 @ 12:00 pm	2018-12-21 @ 8:00 am	< 0.3	2018-12-24
9139256	2 MEDIA CENTER	2018-12-18 @ 10:00 am	2018-12-21 @ 8:00 am	< 0.3	2018-12-24
9139271	201	2018-12-18 @ 11:00 am	2018-12-21 @ 8:00 am	1.9 ± 0.4	2018-12-24
9139283	202	2018-12-18 @ 11:00 am	2018-12-21 @ 8:00 am	1.1 ± 0.4	2018-12-24
9139279	203	2018-12-18 @ 11:00 am	2018-12-21 @ 8:00 am	1.2 ± 0.4	2018-12-24
9139286	204	2018-12-18 @ 11:00 am	2018-12-21 @ 8:00 am	0.7 ± 0.4	2018-12-24
9139290	205	2018-12-18 @ 11:00 am	2018-12-21 @ 9:00 am	1.7 ± 0.4	2018-12-24
9139292	206	2018-12-18 @ 11:00 am	2018-12-21 @ 9:00 am	1.1 ± 0.4	2018-12-24
9139269	207	2018-12-18 @ 11:00 am	2018-12-21 @ 9:00 am	1.5 ± 0.4	2018-12-24
9139294	208	2018-12-18 @ 11:00 am	2018-12-21 @ 9:00 am	1.0 ± 0.3	2018-12-24
9139297	209	2018-12-18 @ 12:00 pm	2018-12-21 @ 9:00 am	1.2 ± 0.3	2018-12-24
9139298	210	2018-12-18 @ 12:00 pm	2018-12-21 @ 9:00 am	1.1 ± 0.3	2018-12-24
9139288	211	2018-12-18 @ 12:00 pm	2018-12-21 @ 9:00 am	1.2 ± 0.4	2018-12-24
9139282	212	2018-12-18 @ 12:00 pm	2018-12-21 @ 9:00 am	1.8 ± 0.4	2018-12-24
9139251	301	2018-12-18 @ 11:00 am	2018-12-21 @ 8:00 am	1.4 ± 0.4	2018-12-24



Radon test result report for:

**BECKER PUBLIC SCHOOL  
BECKER MIDDLE SCHOOL**

Kit #	Room Id	Started	Ended	pCi/L	Analyzed
9139252	302	2018-12-18 @ 11:00 am	2018-12-21 @ 8:00 am	1.1 ± 0.3	2018-12-24
9139265	303	2018-12-18 @ 11:00 am	2018-12-21 @ 8:00 am	0.8 ± 0.4	2018-12-24
9139246	304	2018-12-18 @ 11:00 am	2018-12-21 @ 8:00 am	1.1 ± 0.4	2018-12-24
9139273	305	2018-12-18 @ 11:00 am	2018-12-21 @ 8:00 am	1.5 ± 0.4	2018-12-24
9139275	306	2018-12-18 @ 11:00 am	2018-12-21 @ 8:00 am	0.9 ± 0.3	2018-12-24
9139272	307	2018-12-18 @ 11:00 am	2018-12-21 @ 8:00 am	1.1 ± 0.4	2018-12-24
9139285	308	2018-12-18 @ 11:00 am	2018-12-21 @ 8:00 am	0.9 ± 0.3	2018-12-24
9139267	309	2018-12-18 @ 11:00 am	2018-12-21 @ 8:00 am	0.6 ± 0.3	2018-12-24
9139278	310	2018-12-18 @ 11:00 am	2018-12-21 @ 8:00 am	0.8 ± 0.3	2018-12-24
9139295	311	2018-12-18 @ 11:00 am	2018-12-21 @ 8:00 am	1.0 ± 0.4	2018-12-24
9139268	312	2018-12-18 @ 11:00 am	2018-12-21 @ 8:00 am	< 0.3	2018-12-24
9139262	400	2018-12-18 @ 10:00 am	2018-12-21 @ 9:00 am	0.9 ± 0.3	2018-12-24
9139253	401	2018-12-18 @ 10:00 am	2018-12-21 @ 9:00 am	0.6 ± 0.4	2018-12-24
9139241	402	2018-12-18 @ 10:00 am	2018-12-21 @ 9:00 am	< 0.3	2018-12-24
9139233	403	2018-12-18 @ 10:00 am	2018-12-21 @ 9:00 am	0.6 ± 0.3	2018-12-24
9139257	404	2018-12-18 @ 10:00 am	2018-12-21 @ 9:00 am	1.1 ± 0.4	2018-12-24
9139261	406	2018-12-18 @ 10:00 am	2018-12-21 @ 9:00 am	0.7 ± 0.3	2018-12-24
9139249	408	2018-12-18 @ 10:00 am	2018-12-21 @ 12:00 pm	0.6 ± 0.3	2018-12-24
9139237	501	2018-12-18 @ 9:00 am	2018-12-21 @ 9:00 am	0.9 ± 0.3	2018-12-24
9139224	502	2018-12-18 @ 9:00 am	2018-12-21 @ 9:00 am	1.3 ± 0.3	2018-12-24
9139231	503	2018-12-18 @ 9:00 am	2018-12-21 @ 9:00 am	1.3 ± 0.4	2018-12-24
9139218	504	2018-12-18 @ 9:00 am	2018-12-21 @ 9:00 am	1.0 ± 0.3	2018-12-24
9139209	505	2018-12-18 @ 9:00 am	2018-12-21 @ 9:00 am	2.2 ± 0.4	2018-12-24
9139208	506	2018-12-18 @ 9:00 am	2018-12-21 @ 9:00 am	1.5 ± 0.4	2018-12-24
9139230	507	2018-12-18 @ 9:00 am	2018-12-21 @ 10:00 am	1.6 ± 0.4	2018-12-24
9139225	508	2018-12-18 @ 9:00 am	2018-12-21 @ 10:00 am	1.1 ± 0.3	2018-12-24
9139207	509	2018-12-18 @ 9:00 am	2018-12-21 @ 10:00 am	1.2 ± 0.4	2018-12-24
9139220	510	2018-12-18 @ 9:00 am	2018-12-21 @ 10:00 am	1.1 ± 0.4	2018-12-24
9139219	511	2018-12-18 @ 9:00 am	2018-12-21 @ 10:00 am	1.0 ± 0.4	2018-12-24
9139217	512	2018-12-18 @ 9:00 am	2018-12-21 @ 10:00 am	0.9 ± 0.3	2018-12-24
9139227	604	2018-12-18 @ 10:00 am	2018-12-21 @ 9:00 am	1.3 ± 0.4	2018-12-24
9139223	700	2018-12-18 @ 10:00 am	2018-12-21 @ 9:00 am	0.8 ± 0.3	2018-12-24
9139244	702	2018-12-18 @ 10:00 am	2018-12-21 @ 9:00 am	1.1 ± 0.4	2018-12-24
9139239	704	2018-12-18 @ 10:00 am	2018-12-21 @ 9:00 am	1.0 ± 0.3	2018-12-24
9139232	705	2018-12-18 @ 10:00 am	2018-12-21 @ 9:00 am	1.1 ± 0.3	2018-12-24
9139210	800	2018-12-18 @ 9:00 am	2018-12-21 @ 9:00 am	0.8 ± 0.3	2018-12-24
9139236	801	2018-12-18 @ 9:00 am	2018-12-21 @ 9:00 am	1.2 ± 0.3	2018-12-24

Radon test result report for:**BECKER PUBLIC SCHOOL  
BECKER MIDDLE SCHOOL**

Kit #	Room Id	Started	Ended	pCi/L	Analyzed
9140499	802	2018-12-18 @ 9:00 am	2018-12-21 @ 9:00 am	2.1 ± 0.4	2018-12-24
9139213	803	2018-12-18 @ 9:00 am	2018-12-21 @ 9:00 am	1.0 ± 0.3	2018-12-24
9139238	805	2018-12-18 @ 9:00 am	2018-12-21 @ 9:00 am	1.2 ± 0.3	2018-12-24
9139214	900	2018-12-18 @ 9:00 am	2018-12-21 @ 9:00 am	1.4 ± 0.3	2018-12-24
9139221	901 BY ROCK WALL	2018-12-18 @ 10:00 am	2018-12-21 @ 10:00 am	< 0.3	2018-12-24
9139281	901 NUMBER 1	2018-12-18 @ 12:00 pm	2018-12-21 @ 10:00 am	1.6 ± 0.3	2018-12-24
9139260	901 OPPOSITE FROM ROCK WALL	2018-12-18 @ 10:00 am	2018-12-21 @ 10:00 am	< 0.3	2018-12-24
9139287	907 NUMBER 2	2018-12-18 @ 12:00 pm	2018-12-21 @ 10:00 am	1.3 ± 0.3	2018-12-24
9139276	908	2018-12-18 @ 12:00 pm	2018-12-21 @ 10:00 am	3.2 ± 0.4	2018-12-24
9139250	ASSISTANT PRINCIPAL OFFICE	2018-12-18 @ 11:00 am	2018-12-21 @ 8:00 am	1.3 ± 0.3	2018-12-24
9139266	BOYS LOCKER ROOM	2018-12-18 @ 12:00 pm	2018-12-21 @ 10:00 am	0.7 ± 0.3	2018-12-24
9139226	CAFETERIA	2018-12-18 @ 10:00 am	2018-12-21 @ 9:00 am	1.0 ± 0.3	2018-12-24
9140500	FIELD HOUSE NUMBER 1	2018-12-18 @ 12:00 pm	2018-12-21 @ 10:00 am	0.6 ± 0.3	2018-12-24
9139284	FIELD HOUSE NUMBER 2	2018-12-18 @ 12:00 pm	2018-12-21 @ 10:00 am	1.1 ± 0.3	2018-12-24
9139299	FIELD HOUSE NUMBER 3	2018-12-18 @ 12:00 pm	2018-12-21 @ 10:00 am	0.8 ± 0.3	2018-12-24
9139300	FIELD HOUSE NUMBER 4	2018-12-18 @ 12:00 pm	2018-12-21 @ 10:00 am	0.8 ± 0.3	2018-12-24
9139280	GIRLS LOCKER ROOM	2018-12-18 @ 12:00 pm	2018-12-21 @ 10:00 am	1.0 ± 0.4	2018-12-24
9139258	KITCHEN	2018-12-18 @ 10:00 am	2018-12-21 @ 9:00 am	0.7 ± 0.4	2018-12-24
9139222	LIBRARIAN OFFICE	2018-12-18 @ 10:00 am	2018-12-21 @ 9:00 am	1.1 ± 0.4	2018-12-24
9139240	MEDIA CENTER	2018-12-18 @ 10:00 am	2018-12-21 @ 9:00 am	0.8 ± 0.3	2018-12-24
9139254	NURSE COTT ROOM	2018-12-18 @ 11:00 am	2018-12-21 @ 10:00 am	1.1 ± 0.3	2018-12-24
9139228	PRINCIPAL OFFICE	2018-12-18 @ 11:00 am	2018-12-21 @ 8:00 am	1.6 ± 0.4	2018-12-24
9139259	TECH OFFICE IN MEDIA CENTER	2018-12-18 @ 10:00 am	2018-12-21 @ 9:00 am	0.9 ± 0.4	2018-12-24

Radon test result report for:

**BECKER PUBLIC SCHOOLS  
BECKER HIGH SCHOOL**

Kit #	Room Id	Started	Ended	pCi/L	Analyzed
9139670	102	2018-12-18 @ 8:00 am	2018-12-21 @ 8:00 am	1.1 ± 0.4	2018-12-24
9139671	103	2018-12-18 @ 8:00 am	2018-12-21 @ 10:00 am	1.0 ± 0.3	2018-12-24
9139664	104	2018-12-18 @ 9:00 am	2018-12-21 @ 8:00 am	0.8 ± 0.4	2018-12-24
9139679	105	2018-12-18 @ 8:00 am	2018-12-21 @ 8:00 am	1.7 ± 0.4	2018-12-24
9139681	106	2018-12-18 @ 8:00 am	2018-12-21 @ 8:00 am	0.9 ± 0.4	2018-12-24
9139680	106-1	2018-12-18 @ 8:00 am	2018-12-21 @ 8:00 am	1.1 ± 0.4	2018-12-24
9139678	112	2018-12-18 @ 8:00 am	2018-12-21 @ 8:00 am	1.3 ± 0.4	2018-12-24
9139677	113	2018-12-18 @ 8:00 am	2018-12-21 @ 8:00 am	0.8 ± 0.3	2018-12-24
9139672	113-1	2018-12-18 @ 8:00 am	2018-12-21 @ 8:00 am	1.0 ± 0.4	2018-12-24
9139613	114	2018-12-18 @ 10:00 am	2018-12-21 @ 8:00 am	1.1 ± 0.4	2018-12-24
9139612	115	2018-12-18 @ 10:00 am	2018-12-21 @ 10:00 am	0.9 ± 0.3	2018-12-24
9139674	119	2018-12-18 @ 9:00 am	2018-12-21 @ 8:00 am	0.8 ± 0.4	2018-12-24
9139663	120	2018-12-18 @ 9:00 am	2018-12-21 @ 8:00 am	1.1 ± 0.4	2018-12-24
9139632	203	2018-12-18 @ 9:00 am	2018-12-21 @ 8:00 am	< 0.3	2018-12-24
9139641	204	2018-12-18 @ 9:00 am	2018-12-21 @ 8:00 am	0.9 ± 0.4	2018-12-24
9139634	205	2018-12-18 @ 9:00 am	2018-12-21 @ 8:00 am	1.0 ± 0.4	2018-12-24
9139624	212	2018-12-18 @ 9:00 am	2018-12-21 @ 9:00 am	1.7 ± 0.4	2018-12-24
9139626	213	2018-12-18 @ 9:00 am	2018-12-21 @ 8:00 am	< 0.3	2018-12-24
9139625	213-1	2018-12-18 @ 9:00 am	2018-12-21 @ 8:00 am	0.6 ± 0.4	2018-12-24
9139631	214	2018-12-18 @ 9:00 am	2018-12-21 @ 8:00 am	0.8 ± 0.4	2018-12-24
9139633	215	2018-12-18 @ 9:00 am	2018-12-21 @ 8:00 am	0.8 ± 0.4	2018-12-24
9139642	216	2018-12-18 @ 9:00 am	2018-12-21 @ 8:00 am	1.1 ± 0.4	2018-12-24
9139649	217	2018-12-18 @ 9:00 am	2018-12-21 @ 8:00 am	0.9 ± 0.4	2018-12-24
9139650	218	2018-12-18 @ 9:00 am	2018-12-21 @ 8:00 am	1.1 ± 0.4	2018-12-24
9139658	219	2018-12-18 @ 9:00 am	2018-12-21 @ 8:00 am	1.0 ± 0.3	2018-12-24
9139652	220	2018-12-18 @ 9:00 am	2018-12-21 @ 10:00 am	0.7 ± 0.4	2018-12-24
9139645	221	2018-12-18 @ 9:00 am	2018-12-21 @ 9:00 am	1.2 ± 0.4	2018-12-24
9139640	222	2018-12-18 @ 9:00 am	2018-12-21 @ 8:00 am	1.1 ± 0.4	2018-12-24
9139639	222-1	2018-12-18 @ 9:00 am	2018-12-21 @ 8:00 am	1.2 ± 0.4	2018-12-24
9139646	223	2018-12-18 @ 9:00 am	2018-12-21 @ 9:00 am	1.9 ± 0.4	2018-12-24
9139647	224	2018-12-18 @ 9:00 am	2018-12-21 @ 9:00 am	3.3 ± 0.5	2018-12-24
9139653	225	2018-12-18 @ 9:00 am	2018-12-21 @ 9:00 am	1.3 ± 0.4	2018-12-24
9139666	226	2018-12-18 @ 9:00 am	2018-12-21 @ 9:00 am	1.8 ± 0.4	2018-12-24
9139659	227	2018-12-18 @ 9:00 am	2018-12-21 @ 9:00 am	1.9 ± 0.4	2018-12-24
9139660	228	2018-12-18 @ 9:00 am	2018-12-21 @ 9:00 am	1.1 ± 0.4	2018-12-24
9139648	229	2018-12-18 @ 9:00 am	2018-12-21 @ 9:00 am	2.3 ± 0.4	2018-12-24
9139657	232	2018-12-18 @ 9:00 am	2018-12-21 @ 9:00 am	1.7 ± 0.4	2018-12-24

Radon test result report for:

**BECKER PUBLIC SCHOOLS  
BECKER HIGH SCHOOL**

Kit #	Room Id	Started	Ended	pCi/L	Analyzed
9139651	232	2018-12-18 @ 9:00 am	2018-12-21 @ 9:00 am	2.4 ± 0.4	2018-12-24
9139654	233	2018-12-18 @ 9:00 am	2018-12-21 @ 9:00 am	0.8 ± 0.3	2018-12-24
9139655	235	2018-12-18 @ 9:00 am	2018-12-21 @ 9:00 am	0.9 ± 0.4	2018-12-24
9139667	301	2018-12-18 @ 9:00 am	2018-12-21 @ 9:00 am	1.1 ± 0.4	2018-12-24
9139673	301-1	2018-12-18 @ 9:00 am	2018-12-21 @ 9:00 am	1.5 ± 0.4	2018-12-24
9139661	302	2018-12-18 @ 9:00 am	2018-12-21 @ 9:00 am	1.0 ± 0.4	2018-12-24
9139656	303	2018-12-18 @ 9:00 am	2018-12-21 @ 9:00 am	0.9 ± 0.3	2018-12-24
9139601	304	2018-12-18 @ 9:00 am	2018-12-21 @ 9:00 am	0.8 ± 0.4	2018-12-24
9139617	305	2018-12-18 @ 9:00 am	2018-12-21 @ 9:00 am	0.7 ± 0.4	2018-12-24
9139668	308	2018-12-18 @ 9:00 am	2018-12-21 @ 9:00 am	0.9 ± 0.4	2018-12-24
9139603	417	2018-12-18 @ 10:00 am	2018-12-21 @ 9:00 am	1.0 ± 0.4	2018-12-24
9139614	418	2018-12-18 @ 10:00 am	2018-12-21 @ 9:00 am	0.9 ± 0.4	2018-12-24
9139630	419	2018-12-18 @ 10:00 am	2018-12-21 @ 9:00 am	0.8 ± 0.4	2018-12-24
9139619	419-1	2018-12-18 @ 10:00 am	2018-12-21 @ 9:00 am	0.6 ± 0.4	2018-12-24
9140474	501	2018-12-18 @ 10:00 am	2018-12-21 @ 9:00 am	0.5 ± 0.4	2018-12-24
9140447	502	2018-12-18 @ 10:00 am	2018-12-21 @ 9:00 am	1.3 ± 0.4	2018-12-24
9140466	503	2018-12-18 @ 10:00 am	2018-12-21 @ 9:00 am	1.8 ± 0.4	2018-12-24
9140464	504	2018-12-18 @ 10:00 am	2018-12-21 @ 9:00 am	1.3 ± 0.4	2018-12-24
9140442	505	2018-12-18 @ 10:00 am	2018-12-21 @ 9:00 am	1.5 ± 0.4	2018-12-24
9140473	506	2018-12-18 @ 10:00 am	2018-12-21 @ 9:00 am	2.0 ± 0.4	2018-12-24
9140484	506-1	2018-12-18 @ 10:00 am	2018-12-21 @ 9:00 am	2.0 ± 0.4	2018-12-24
9140417	507	2018-12-18 @ 10:00 am	2018-12-21 @ 9:00 am	2.1 ± 0.4	2018-12-24
9140475	508	2018-12-18 @ 10:00 am	2018-12-21 @ 11:00 am	2.6 ± 0.4	2018-12-24
9140469	509	2018-12-18 @ 10:00 am	2018-12-21 @ 11:00 am	1.4 ± 0.4	2018-12-24
9140470	510	2018-12-18 @ 10:00 am	2018-12-21 @ 9:00 am	1.8 ± 0.4	2018-12-24
9140467	511	2018-12-18 @ 10:00 am	2018-12-21 @ 9:00 am	1.5 ± 0.4	2018-12-24
9140462	512	2018-12-18 @ 10:00 am	2018-12-21 @ 9:00 am	2.1 ± 0.4	2018-12-24
9140463	601	2018-12-18 @ 9:00 am	2018-12-21 @ 9:00 am	0.8 ± 0.3	2018-12-24
9139606	602	2018-12-18 @ 9:00 am	2018-12-21 @ 9:00 am	0.7 ± 0.4	2018-12-24
9139605	602-1	2018-12-18 @ 9:00 am	2018-12-21 @ 9:00 am	< 0.3	2018-12-24
9140429	605	2018-12-18 @ 9:00 am	2018-12-21 @ 9:00 am	0.8 ± 0.4	2018-12-24
9140472	607	2018-12-18 @ 9:00 am	2018-12-21 @ 9:00 am	0.6 ± 0.4	2018-12-24
9140418	608	2018-12-18 @ 9:00 am	2018-12-21 @ 9:00 am	0.9 ± 0.3	2018-12-24
9140460	609	2018-12-18 @ 9:00 am	2018-12-21 @ 9:00 am	0.9 ± 0.4	2018-12-24
9140458	610	2018-12-18 @ 9:00 am	2018-12-21 @ 9:00 am	1.0 ± 0.4	2018-12-24
9140477	611	2018-12-18 @ 9:00 am	2018-12-21 @ 9:00 am	0.9 ± 0.4	2018-12-24
9140420	612	2018-12-18 @ 9:00 am	2018-12-21 @ 9:00 am	1.0 ± 0.4	2018-12-24

Radon test result report for:

**BECKER PUBLIC SCHOOLS  
BECKER HIGH SCHOOL**

Kit #	Room Id	Started	Ended	pCi/L	Analyzed
9140471	617	2018-12-18 @ 9:00 am	2018-12-21 @ 9:00 am	0.9 ± 0.3	2018-12-24
9140457	618	2018-12-18 @ 9:00 am	2018-12-21 @ 9:00 am	0.9 ± 0.4	2018-12-24
9140485	619	2018-12-18 @ 9:00 am	2018-12-21 @ 9:00 am	1.0 ± 0.4	2018-12-24
9139608	700	2018-12-18 @ 9:00 am	2018-12-21 @ 9:00 am	1.1 ± 0.4	2018-12-24
9139618	700A	2018-12-18 @ 9:00 am	2018-12-21 @ 9:00 am	0.9 ± 0.4	2018-12-24
9139610	700B	2018-12-18 @ 9:00 am	2018-12-21 @ 9:00 am	0.9 ± 0.3	2018-12-24
9139616	700C	2018-12-18 @ 9:00 am	2018-12-21 @ 9:00 am	0.8 ± 0.4	2018-12-24
9139621	701	2018-12-18 @ 9:00 am	2018-12-21 @ 9:00 am	1.1 ± 0.4	2018-12-24
9140428	702	2018-12-18 @ 9:00 am	2018-12-21 @ 9:00 am	0.6 ± 0.3	2018-12-24
9140476	703	2018-12-18 @ 9:00 am	2018-12-21 @ 9:00 am	0.8 ± 0.3	2018-12-24
9140465	704	2018-12-18 @ 9:00 am	2018-12-21 @ 9:00 am	1.1 ± 0.4	2018-12-24
9140426	705	2018-12-18 @ 9:00 am	2018-12-21 @ 9:00 am	0.8 ± 0.3	2018-12-24
9140486	706	2018-12-18 @ 9:00 am	2018-12-21 @ 9:00 am	< 0.3	2018-12-24
9140478	706-1	2018-12-18 @ 9:00 am	2018-12-21 @ 9:00 am	1.0 ± 0.4	2018-12-24
9140423	707	2018-12-18 @ 9:00 am	2018-12-21 @ 9:00 am	1.1 ± 0.4	2018-12-24
9140427	708	2018-12-18 @ 9:00 am	2018-12-21 @ 9:00 am	0.9 ± 0.4	2018-12-24
9139609	801	2018-12-18 @ 9:00 am	2018-12-21 @ 9:00 am	0.7 ± 0.4	2018-12-24
9139607	801 OFFICE	2018-12-18 @ 9:00 am	2018-12-21 @ 9:00 am	0.6 ± 0.4	2018-12-24
9139622	802	2018-12-18 @ 9:00 am	2018-12-21 @ 9:00 am	0.7 ± 0.4	2018-12-24
9139615	803	2018-12-18 @ 9:00 am	2018-12-21 @ 9:00 am	0.7 ± 0.3	2018-12-24
9139604	804	2018-12-18 @ 10:00 am	2018-12-21 @ 9:00 am	< 0.3	2018-12-24
9139620	806	2018-12-18 @ 10:00 am	2018-12-21 @ 9:00 am	2.4 ± 0.4	2018-12-24
9139602	807	2018-12-18 @ 10:00 am	2018-12-21 @ 9:00 am	0.7 ± 0.4	2018-12-24
9140448	808	2018-12-18 @ 10:00 am	2018-12-21 @ 9:00 am	1.0 ± 0.4	2018-12-24
9140468	810	2018-12-18 @ 10:00 am	2018-12-21 @ 11:00 am	0.9 ± 0.3	2018-12-24
9140424	810-1	2018-12-18 @ 10:00 am	2018-12-21 @ 11:00 am	1.0 ± 0.4	2018-12-24
9139643	9139644	2018-12-18 @ 9:00 am	2018-12-21 @ 8:00 am	1.2 ± 0.4	2018-12-24
9139669	ADMIN ASSISTANT CUBICLE	2018-12-18 @ 8:00 am	2018-12-21 @ 8:00 am	1.2 ± 0.4	2018-12-24
9139662	AUDITORIUM	2018-12-18 @ 9:00 am	2018-12-21 @ 8:00 am	0.7 ± 0.4	2018-12-24
9139675	BAND	2018-12-18 @ 9:00 am	2018-12-21 @ 9:00 am	0.9 ± 0.4	2018-12-24
9139676	BAND OFFICE	2018-12-18 @ 9:00 am	2018-12-21 @ 9:00 am	0.9 ± 0.4	2018-12-24
9139611	BLANK1	2018-12-18 @ 10:00 am	2018-12-21 @ 9:00 am	< 0.3	2018-12-24
9139637	BLANK2	2018-12-18 @ 10:00 am	2018-12-21 @ 9:00 am	< 0.3	2018-12-24
9139638	BLANK3	2018-12-18 @ 10:00 am	2018-12-21 @ 9:00 am	< 0.3	2018-12-24
9139627	BLANK4	2018-12-18 @ 10:00 am	2018-12-21 @ 9:00 am	< 0.3	2018-12-24
9139628	BLANK5	2018-12-18 @ 10:00 am	2018-12-21 @ 9:00 am	< 0.3	2018-12-24
9139694	BOYS LOCKER ROOM	2018-12-18 @ 8:00 am	2018-12-21 @ 8:00 am	1.8 ± 0.4	2018-12-24

Radon test result report for:

**BECKER PUBLIC SCHOOLS  
BECKER HIGH SCHOOL**

Kit #	Room Id	Started	Ended	pCi/L	Analyzed
9139665	CHOIR	2018-12-18 @ 9:00 am	2018-12-21 @ 9:00 am	1.1 ± 0.4	2018-12-24
9139696	COACH MEETING ROOM	2018-12-18 @ 8:00 am	2018-12-21 @ 8:00 am	< 0.3	2018-12-24
9140459	COMMONS	2018-12-18 @ 10:00 am	2018-12-21 @ 9:00 am	1.6 ± 0.4	2018-12-24
9139685	COMMONS	2018-12-18 @ 8:00 am	2018-12-21 @ 8:00 am	1.2 ± 0.4	2018-12-24
9140461	COUNSELING OFFICE	2018-12-18 @ 10:00 am	2018-12-21 @ 10:00 am	< 0.3	2018-12-24
9139700	CUSTODIAL OFFICE	2018-12-18 @ 8:00 am	2018-12-21 @ 8:00 am	0.9 ± 0.4	2018-12-24
9139682	DISTRICT OFFICE CUBES	2018-12-18 @ 8:00 am	2018-12-21 @ 8:00 am	1.2 ± 0.4	2018-12-24
9139692	DRESSING ROOM	2018-12-18 @ 8:00 am	2018-12-21 @ 8:00 am	2.4 ± 0.4	2018-12-24
9139699	GIRLS LOCKER ROOM9139699	2018-12-18 @ 8:00 am	2018-12-21 @ 8:00 am	1.5 ± 0.4	2018-12-24
9139690	GYM NORTH	2018-12-18 @ 8:00 am	2018-12-21 @ 8:00 am	1.3 ± 0.4	2018-12-24
9139686	GYM SOUTH	2018-12-18 @ 8:00 am	2018-12-21 @ 8:00 am	1.4 ± 0.4	2018-12-24
9139698	GYMNASTICS GYM NORTH	2018-12-18 @ 8:00 am	2018-12-21 @ 8:00 am	1.6 ± 0.3	2018-12-24
9139695	GYMNASTICS GYM SOUTH	2018-12-18 @ 8:00 am	2018-12-21 @ 8:00 am	1.4 ± 0.4	2018-12-24
9139683	KITCHEN	2018-12-18 @ 8:00 am	2018-12-21 @ 8:00 am	0.7 ± 0.4	2018-12-24
9139684	KITCHEN OFFICE	2018-12-18 @ 8:00 am	2018-12-21 @ 8:00 am	< 0.3	2018-12-24
9140434	MEDIA CENTER OFFICE	2018-12-18 @ 9:00 am	2018-12-21 @ 9:00 am	0.8 ± 0.4	2018-12-24
9139687	PERFORMING ARTS CENTER	2018-12-18 @ 8:00 am	2018-12-21 @ 8:00 am	2.7 ± 0.4	2018-12-24
9139693	POOL MEETING ROOM	2018-12-18 @ 8:00 am	2018-12-21 @ 8:00 am	0.6 ± 0.3	2018-12-24
9139697	POOL OFFICE	2018-12-18 @ 8:00 am	2018-12-21 @ 8:00 am	0.9 ± 0.3	2018-12-24
9139689	SCENE SHOP	2018-12-18 @ 8:00 am	2018-12-21 @ 8:00 am	3.5 ± 0.5	2018-12-24
9139691	STAGE	2018-12-18 @ 8:00 am	2018-12-21 @ 8:00 am	2.4 ± 0.4	2018-12-24
9139688	STAGE1	2018-12-18 @ 8:00 am	2018-12-21 @ 8:00 am	2.4 ± 0.4	2018-12-24
9139623	TLC	2018-12-18 @ 9:00 am	2018-12-21 @ 9:00 am	1.2 ± 0.4	2018-12-24

Radon test result report for:

**BECKER PUBLIC SCHOOLS  
BECKER INTERMEDIATE SCHOOL**

Kit #	Room Id	Started	Ended	pCi/L	Analyzed
9140401	10	2018-12-18 @ 12:00 pm	2018-12-21 @ 12:00 pm	1.4 ± 0.4	2018-12-24
9140320	100	2018-12-18 @ 1:00 pm	2018-12-21 @ 11:00 am	0.6 ± 0.3	2018-12-24
9140410	101	2018-12-18 @ 1:00 pm	2018-12-21 @ 11:00 am	< 0.3	2018-12-24
9140342	102	2018-12-18 @ 1:00 pm	2018-12-21 @ 11:00 am	1.0 ± 0.4	2018-12-24
9140408	102-1	2018-12-18 @ 1:00 pm	2018-12-21 @ 11:00 am	1.0 ± 0.4	2018-12-24
9140337	103	2018-12-18 @ 1:00 pm	2018-12-21 @ 11:00 am	0.9 ± 0.4	2018-12-24
9140416	103-1	2018-12-18 @ 1:00 pm	2018-12-21 @ 11:00 am	1.2 ± 0.3	2018-12-24
9140305	103A	2018-12-18 @ 1:00 pm	2018-12-21 @ 11:00 am	1.3 ± 0.4	2018-12-24
9140343	104	2018-12-18 @ 1:00 pm	2018-12-21 @ 11:00 am	1.0 ± 0.4	2018-12-24
9129980	106	2018-12-18 @ 1:00 pm	2018-12-21 @ 11:00 am	1.3 ± 0.4	2018-12-24
9130000	106-1	2018-12-18 @ 1:00 pm	2018-12-21 @ 11:00 am	1.6 ± 0.4	2018-12-24
9140494	107	2018-12-18 @ 1:00 pm	2018-12-21 @ 11:00 am	0.9 ± 0.3	2018-12-24
9129981	108	2018-12-18 @ 1:00 pm	2018-12-21 @ 11:00 am	0.8 ± 0.4	2018-12-24
9140411	109	2018-12-18 @ 1:00 pm	2018-12-21 @ 11:00 am	1.2 ± 0.4	2018-12-24
9140321	110	2018-12-18 @ 1:00 pm	2018-12-21 @ 11:00 am	0.9 ± 0.4	2018-12-24
9140491	111	2018-12-18 @ 1:00 pm	2018-12-21 @ 11:00 am	1.2 ± 0.4	2018-12-24
9139202	111-1	2018-12-18 @ 1:00 pm	2018-12-21 @ 11:00 am	0.9 ± 0.4	2018-12-24
9140493	112	2018-12-18 @ 1:00 pm	2018-12-21 @ 11:00 am	1.0 ± 0.4	2018-12-24
9140327	119	2018-12-18 @ 1:00 pm	2018-12-21 @ 11:00 am	1.0 ± 0.4	2018-12-24
9140489	12	2018-12-18 @ 12:00 pm	2018-12-21 @ 12:00 pm	0.9 ± 0.3	2018-12-24
9140340	120	2018-12-18 @ 1:00 pm	2018-12-21 @ 11:00 am	1.2 ± 0.4	2018-12-24
9140306	120A	2018-12-18 @ 1:00 pm	2018-12-21 @ 11:00 am	1.1 ± 0.4	2018-12-24
9140347	121	2018-12-18 @ 1:00 pm	2018-12-21 @ 11:00 am	1.0 ± 0.3	2018-12-24
9140409	122	2018-12-18 @ 1:00 pm	2018-12-21 @ 11:00 am	1.2 ± 0.4	2018-12-24
9140345	122A	2018-12-18 @ 1:00 pm	2018-12-21 @ 11:00 am	0.9 ± 0.4	2018-12-24
9140346	124	2018-12-18 @ 1:00 pm	2018-12-21 @ 11:00 am	0.7 ± 0.4	2018-12-24
9140341	125	2018-12-18 @ 1:00 pm	2018-12-21 @ 11:00 am	1.4 ± 0.4	2018-12-24
9140328	126	2018-12-18 @ 1:00 pm	2018-12-21 @ 11:00 am	1.9 ± 0.4	2018-12-24
9140425	129	2018-12-18 @ 12:00 pm	2018-12-21 @ 11:00 am	1.3 ± 0.3	2018-12-24
9140906	129-1	2018-12-18 @ 12:00 pm	2018-12-21 @ 11:00 am	1.0 ± 0.4	2018-12-24
9140492	12A	2018-12-18 @ 12:00 pm	2018-12-21 @ 12:00 pm	0.8 ± 0.3	2018-12-24
9140479	13	2018-12-18 @ 12:00 pm	2018-12-21 @ 12:00 pm	1.6 ± 0.3	2018-12-24
9140985	131	2018-12-18 @ 12:00 pm	2018-12-21 @ 11:00 am	1.3 ± 0.4	2018-12-24
9140422	131-1	2018-12-18 @ 12:00 pm	2018-12-21 @ 11:00 am	1.5 ± 0.3	2018-12-24
9140419	133	2018-12-18 @ 12:00 pm	2018-12-21 @ 11:00 am	1.5 ± 0.4	2018-12-24
9140905	135	2018-12-18 @ 12:00 pm	2018-12-21 @ 11:00 am	1.6 ± 0.4	2018-12-24
9140994	136	2018-12-18 @ 12:00 pm	2018-12-21 @ 11:00 am	1.9 ± 0.4	2018-12-24

Radon test result report for:

**BECKER PUBLIC SCHOOLS  
BECKER INTERMEDIATE SCHOOL**

Kit #	Room Id	Started	Ended	pCi/L	Analyzed
9140971	137	2018-12-18 @ 12:00 pm	2018-12-21 @ 11:00 am	1.3 ± 0.4	2018-12-24
9140972	138	2018-12-18 @ 12:00 pm	2018-12-21 @ 11:00 am	2.1 ± 0.4	2018-12-24
9139205	14	2018-12-18 @ 12:00 pm	2018-12-21 @ 12:00 pm	1.7 ± 0.4	2018-12-24
9140480	15	2018-12-18 @ 12:00 pm	2018-12-21 @ 12:00 pm	1.0 ± 0.4	2018-12-24
9140496	16	2018-12-18 @ 12:00 pm	2018-12-21 @ 12:00 pm	0.8 ± 0.3	2018-12-24
9140495	17	2018-12-18 @ 12:00 pm	2018-12-21 @ 12:00 pm	1.4 ± 0.4	2018-12-24
9140498	18	2018-12-18 @ 12:00 pm	2018-12-21 @ 12:00 pm	1.6 ± 0.4	2018-12-24
9140412	18-1	2018-12-18 @ 12:00 pm	2018-12-21 @ 12:00 pm	1.5 ± 0.4	2018-12-24
9140404	19	2018-12-18 @ 12:00 pm	2018-12-21 @ 12:00 pm	0.6 ± 0.3	2018-12-24
9140330	2 116	2018-12-18 @ 1:00 pm	2018-12-21 @ 12:00 pm	< 0.3	2018-12-24
9140344	2 117	2018-12-18 @ 1:00 pm	2018-12-21 @ 12:00 pm	< 0.3	2018-12-24
9140335	2 118	2018-12-18 @ 1:00 pm	2018-12-21 @ 12:00 pm	< 0.3	2018-12-24
9140413	2 119	2018-12-18 @ 1:00 pm	2018-12-21 @ 12:00 pm	< 0.3	2018-12-24
9140407	2 121	2018-12-18 @ 1:00 pm	2018-12-21 @ 12:00 pm	< 0.3	2018-12-24
9140329	21	2018-12-18 @ 12:00 pm	2018-12-21 @ 12:00 pm	< 0.3	2018-12-24
9140405	23	2018-12-18 @ 12:00 pm	2018-12-21 @ 12:00 pm	0.7 ± 0.3	2018-12-24
9140402	25	2018-12-18 @ 12:00 pm	2018-12-21 @ 11:00 am	1.6 ± 0.4	2018-12-24
9140403	27	2018-12-18 @ 12:00 pm	2018-12-21 @ 12:00 pm	1.5 ± 0.4	2018-12-24
9140406	29	2018-12-18 @ 12:00 pm	2018-12-21 @ 12:00 pm	1.8 ± 0.4	2018-12-24
9140319	29-1	2018-12-18 @ 12:00 pm	2018-12-21 @ 12:00 pm	1.4 ± 0.4	2018-12-24
9140339	31	2018-12-18 @ 12:00 pm	2018-12-21 @ 12:00 pm	1.1 ± 0.4	2018-12-24
9140313	32	2018-12-18 @ 1:00 pm	2018-12-21 @ 11:00 am	0.6 ± 0.4	2018-12-24
9139201	46	2018-12-18 @ 12:00 pm	2018-12-21 @ 12:00 pm	< 0.3	2018-12-24
9140961	48	2018-12-18 @ 12:00 pm	2018-12-21 @ 12:00 pm	< 0.3	2018-12-24
9139204	49	2018-12-18 @ 12:00 pm	2018-12-21 @ 12:00 pm	1.2 ± 0.4	2018-12-24
9140922	50	2018-12-18 @ 12:00 pm	2018-12-21 @ 12:00 pm	< 0.3	2018-12-24
9140487	51	2018-12-18 @ 12:00 pm	2018-12-21 @ 12:00 pm	1.2 ± 0.4	2018-12-24
9140488	52	2018-12-18 @ 12:00 pm	2018-12-21 @ 12:00 pm	1.0 ± 0.3	2018-12-24
9139203	52-1	2018-12-18 @ 12:00 pm	2018-12-21 @ 12:00 pm	1.3 ± 0.3	2018-12-24
9140490	52A	2018-12-18 @ 12:00 pm	2018-12-21 @ 12:00 pm	0.8 ± 0.3	2018-12-24
9140962	53	2018-12-18 @ 12:00 pm	2018-12-21 @ 12:00 pm	< 0.3	2018-12-24
9140964	55	2018-12-18 @ 12:00 pm	2018-12-21 @ 12:00 pm	0.8 ± 0.3	2018-12-24
9140969	56	2018-12-18 @ 12:00 pm	2018-12-21 @ 12:00 pm	1.5 ± 0.4	2018-12-24
9140481	57	2018-12-18 @ 12:00 pm	2018-12-21 @ 12:00 pm	1.7 ± 0.4	2018-12-24
9140482	58	2018-12-18 @ 12:00 pm	2018-12-21 @ 12:00 pm	1.7 ± 0.4	2018-12-24
9140415	7	2018-12-18 @ 1:00 pm	2018-12-21 @ 12:00 pm	0.7 ± 0.4	2018-12-24
9140311	9	2018-12-18 @ 1:00 pm	2018-12-21 @ 12:00 pm	1.2 ± 0.4	2018-12-24



Radon test result report for:

**BECKER PUBLIC SCHOOLS  
BECKER INTERMEDIATE SCHOOL**

Kit #	Room Id	Started	Ended	pCi/L	Analyzed
9140414	9A	2018-12-18 @ 1:00 pm	2018-12-21 @ 12:00 pm	1.3 ± 0.4	2018-12-24
9140435	ASSISTANT PRINCIPAL OFFICE	2018-12-18 @ 12:00 pm	2018-12-21 @ 10:00 am	1.0 ± 0.4	2018-12-24
9140913	GYM 1	2018-12-18 @ 12:00 pm	2018-12-21 @ 12:00 pm	0.8 ± 0.4	2018-12-24
9140914	GYM 2	2018-12-18 @ 12:00 pm	2018-12-21 @ 12:00 pm	1.1 ± 0.4	2018-12-24
9140497	GYM 3	2018-12-18 @ 12:00 pm	2018-12-21 @ 12:00 pm	0.5 ± 0.3	2018-12-24
9140483	GYM 3-1	2018-12-18 @ 12:00 pm	2018-12-21 @ 12:00 pm	< 0.3	2018-12-24
9140312	KITCHEN OFFICE	2018-12-18 @ 1:00 pm	2018-12-21 @ 11:00 am	0.6 ± 0.3	2018-12-24
9140980	MAIN OFFICE	2018-12-18 @ 12:00 pm	2018-12-21 @ 10:00 am	1.4 ± 0.4	2018-12-24
9140995	MAIN OFFICE-1	2018-12-18 @ 12:00 pm	2018-12-21 @ 10:00 am	1.1 ± 0.4	2018-12-24
9129993	MR O&APOS;S OFFICE	2018-12-18 @ 1:00 pm	2018-12-21 @ 11:00 am	1.0 ± 0.4	2018-12-24
9140349	MRS. B&APOS;S OFFICE	2018-12-18 @ 1:00 pm	2018-12-21 @ 11:00 am	0.9 ± 0.4	2018-12-24
9140970	NURSE&APOS;S OFFICE	2018-12-18 @ 12:00 pm	2018-12-21 @ 10:00 am	1.5 ± 0.4	2018-12-24
9140979	PRINCIPAL OFFICE	2018-12-18 @ 12:00 pm	2018-12-21 @ 10:00 am	1.5 ± 0.4	2018-12-24

Radon test result report for:

**BECKER PUBLIC SCHOOLS  
BECKER PRIMARY SCHOOL**

Kit #	Room Id	Started	Ended	pCi/L	Analyzed
9140600	100	2018-12-18 @ 10:00 am	2018-12-21 @ 10:00 am	1.1 ± 0.3	2018-12-24
9140597	101	2018-12-18 @ 10:00 am	2018-12-21 @ 10:00 am	1.2 ± 0.3	2018-12-24
9140596	102	2018-12-18 @ 10:00 am	2018-12-21 @ 10:00 am	1.0 ± 0.3	2018-12-24
9140599	103	2018-12-18 @ 10:00 am	2018-12-21 @ 10:00 am	1.5 ± 0.3	2018-12-24
9140598	103 OFFICE	2018-12-18 @ 10:00 am	2018-12-21 @ 10:00 am	1.0 ± 0.3	2018-12-24
9140577	104	2018-12-18 @ 10:00 am	2018-12-21 @ 10:00 am	1.5 ± 0.4	2018-12-24
9140579	105	2018-12-18 @ 10:00 am	2018-12-21 @ 10:00 am	1.5 ± 0.4	2018-12-24
9140575	107	2018-12-18 @ 10:00 am	2018-12-21 @ 10:00 am	1.3 ± 0.3	2018-12-24
9140578	108	2018-12-18 @ 10:00 am	2018-12-21 @ 10:00 am	0.7 ± 0.3	2018-12-24
9140574	109	2018-12-18 @ 10:00 am	2018-12-21 @ 10:00 am	1.2 ± 0.3	2018-12-24
9140581	110	2018-12-18 @ 10:00 am	2018-12-21 @ 10:00 am	2.3 ± 0.4	2018-12-24
9140587	112	2018-12-18 @ 10:00 am	2018-12-21 @ 10:00 am	1.0 ± 0.3	2018-12-24
9140588	113	2018-12-18 @ 10:00 am	2018-12-21 @ 10:00 am	0.9 ± 0.3	2018-12-24
9140589	113-1	2018-12-18 @ 10:00 am	2018-12-21 @ 11:00 am	1.2 ± 0.4	2018-12-24
9140592	114	2018-12-18 @ 10:00 am	2018-12-21 @ 10:00 am	0.9 ± 0.3	2018-12-24
9140586	115	2018-12-18 @ 10:00 am	2018-12-21 @ 10:00 am	1.0 ± 0.4	2018-12-24
9140576	116	2018-12-18 @ 10:00 am	2018-12-21 @ 10:00 am	0.9 ± 0.4	2018-12-24
9140582	117	2018-12-18 @ 10:00 am	2018-12-21 @ 10:00 am	1.0 ± 0.4	2018-12-24
9140580	119	2018-12-18 @ 10:00 am	2018-12-21 @ 11:00 am	1.1 ± 0.3	2018-12-24
9140583	120	2018-12-18 @ 10:00 am	2018-12-21 @ 10:00 am	1.3 ± 0.4	2018-12-24
9140584	121	2018-12-18 @ 10:00 am	2018-12-21 @ 10:00 am	1.0 ± 0.3	2018-12-24
9140538	201	2018-12-18 @ 11:00 am	2018-12-21 @ 10:00 am	1.5 ± 0.4	2018-12-24
9140513	202	2018-12-18 @ 11:00 am	2018-12-21 @ 10:00 am	1.7 ± 0.4	2018-12-24
9140537	203	2018-12-18 @ 11:00 am	2018-12-21 @ 10:00 am	2.9 ± 0.4	2018-12-24
9140544	204	2018-12-18 @ 11:00 am	2018-12-21 @ 10:00 am	1.1 ± 0.3	2018-12-24
9140543	204-1	2018-12-18 @ 11:00 am	2018-12-21 @ 10:00 am	1.3 ± 0.4	2018-12-24
9140539	205	2018-12-18 @ 11:00 am	2018-12-21 @ 10:00 am	1.6 ± 0.3	2018-12-24
9140540	206	2018-12-18 @ 11:00 am	2018-12-21 @ 10:00 am	1.3 ± 0.3	2018-12-24
9140541	207	2018-12-18 @ 11:00 am	2018-12-21 @ 10:00 am	1.3 ± 0.4	2018-12-24
9140542	208	2018-12-18 @ 11:00 am	2018-12-21 @ 10:00 am	1.2 ± 0.3	2018-12-24
9140545	209	2018-12-18 @ 11:00 am	2018-12-21 @ 10:00 am	1.5 ± 0.4	2018-12-24
9140546	210	2018-12-18 @ 11:00 am	2018-12-21 @ 10:00 am	0.9 ± 0.3	2018-12-24
9140547	211	2018-12-18 @ 11:00 am	2018-12-21 @ 10:00 am	1.5 ± 0.4	2018-12-24
9140567	213	2018-12-18 @ 10:00 am	2018-12-21 @ 10:00 am	0.8 ± 0.4	2018-12-24
9140571	213-1	2018-12-18 @ 10:00 am	2018-12-21 @ 10:00 am	1.1 ± 0.4	2018-12-24
9140573	214	2018-12-18 @ 10:00 am	2018-12-21 @ 10:00 am	0.8 ± 0.3	2018-12-24
9140572	215	2018-12-18 @ 10:00 am	2018-12-21 @ 10:00 am	1.2 ± 0.3	2018-12-24

Radon test result report for:

**BECKER PUBLIC SCHOOLS  
BECKER PRIMARY SCHOOL**

Kit #	Room Id	Started	Ended	pCi/L	Analyzed
9140430	216	2018-12-18 @ 11:00 am	2018-12-21 @ 11:00 am	1.0 ± 0.3	2018-12-24
9140455	217	2018-12-18 @ 11:00 am	2018-12-21 @ 11:00 am	0.9 ± 0.4	2018-12-24
9140502	218	2018-12-18 @ 11:00 am	2018-12-21 @ 11:00 am	1.1 ± 0.3	2018-12-24
9140501	219	2018-12-18 @ 11:00 am	2018-12-21 @ 11:00 am	1.2 ± 0.4	2018-12-24
9140504	220	2018-12-18 @ 11:00 am	2018-12-21 @ 11:00 am	1.2 ± 0.4	2018-12-24
9140503	300	2018-12-18 @ 11:00 am	2018-12-21 @ 10:00 am	1.4 ± 0.4	2018-12-24
9140509	301	2018-12-18 @ 11:00 am	2018-12-21 @ 10:00 am	2.4 ± 0.4	2018-12-24
9140508	302	2018-12-18 @ 11:00 am	2018-12-21 @ 10:00 am	1.3 ± 0.3	2018-12-24
9140449	303	2018-12-18 @ 11:00 am	2018-12-21 @ 10:00 am	1.4 ± 0.4	2018-12-24
9140443	304	2018-12-18 @ 11:00 am	2018-12-21 @ 10:00 am	2.1 ± 0.4	2018-12-24
9140438	305	2018-12-18 @ 11:00 am	2018-12-21 @ 10:00 am	1.8 ± 0.4	2018-12-24
9140432	306	2018-12-18 @ 11:00 am	2018-12-21 @ 10:00 am	1.7 ± 0.4	2018-12-24
9140507	307	2018-12-18 @ 11:00 am	2018-12-21 @ 10:00 am	2.0 ± 0.4	2018-12-24
9140515	308	2018-12-18 @ 11:00 am	2018-12-21 @ 10:00 am	1.2 ± 0.4	2018-12-24
9140506	309	2018-12-18 @ 11:00 am	2018-12-21 @ 10:00 am	1.4 ± 0.4	2018-12-24
9140505	310	2018-12-18 @ 11:00 am	2018-12-21 @ 10:00 am	1.4 ± 0.4	2018-12-24
9140511	311	2018-12-18 @ 11:00 am	2018-12-21 @ 10:00 am	1.6 ± 0.4	2018-12-24
9140522	312	2018-12-18 @ 11:00 am	2018-12-21 @ 10:00 am	2.2 ± 0.4	2018-12-24
9140517	312-1	2018-12-18 @ 11:00 am	2018-12-21 @ 10:00 am	2.0 ± 0.4	2018-12-24
9140451	314	2018-12-18 @ 11:00 am	2018-12-21 @ 10:00 am	1.7 ± 0.4	2018-12-24
9140444	314 OFFICE	2018-12-18 @ 11:00 am	2018-12-21 @ 11:00 am	1.4 ± 0.4	2018-12-24
9140516	316	2018-12-18 @ 11:00 am	2018-12-21 @ 10:00 am	1.2 ± 0.3	2018-12-24
9140454	330	2018-12-18 @ 11:00 am	2018-12-21 @ 10:00 am	1.5 ± 0.3	2018-12-24
9140431	330-1	2018-12-18 @ 11:00 am	2018-12-21 @ 10:00 am	1.4 ± 0.4	2018-12-24
9140450	331	2018-12-18 @ 11:00 am	2018-12-21 @ 10:00 am	1.4 ± 0.3	2018-12-24
9140456	333	2018-12-18 @ 11:00 am	2018-12-21 @ 10:00 am	2.7 ± 0.4	2018-12-24
9140440	334	2018-12-18 @ 11:00 am	2018-12-21 @ 10:00 am	1.4 ± 0.4	2018-12-24
9140437	334-1	2018-12-18 @ 11:00 am	2018-12-21 @ 10:00 am	1.7 ± 0.4	2018-12-24
9140519	400	2018-12-18 @ 11:00 am	2018-12-21 @ 11:00 am	1.7 ± 0.4	2018-12-24
9140518	400-1	2018-12-18 @ 11:00 am	2018-12-21 @ 11:00 am	1.4 ± 0.4	2018-12-24
9140520	401	2018-12-18 @ 11:00 am	2018-12-21 @ 11:00 am	1.6 ± 0.4	2018-12-24
9140524	402	2018-12-18 @ 11:00 am	2018-12-21 @ 11:00 am	2.0 ± 0.4	2018-12-24
9140527	403	2018-12-18 @ 11:00 am	2018-12-21 @ 11:00 am	2.0 ± 0.4	2018-12-24
9140510	404	2018-12-18 @ 11:00 am	2018-12-21 @ 11:00 am	2.0 ± 0.4	2018-12-24
9140525	405	2018-12-18 @ 11:00 am	2018-12-21 @ 11:00 am	3.7 ± 0.4	2018-12-24
9140526	406	2018-12-18 @ 11:00 am	2018-12-21 @ 11:00 am	2.0 ± 0.4	2018-12-24
9140528	407	2018-12-18 @ 11:00 am	2018-12-21 @ 11:00 am	1.7 ± 0.4	2018-12-24

Radon test result report for:

**BECKER PUBLIC SCHOOLS  
BECKER PRIMARY SCHOOL**

Kit #	Room Id	Started	Ended	pCi/L	Analyzed
9140530	408	2018-12-18 @ 11:00 am	2018-12-21 @ 11:00 am	1.3 ± 0.4	2018-12-24
9140529	408-1	2018-12-18 @ 11:00 am	2018-12-21 @ 11:00 am	1.6 ± 0.3	2018-12-24
9140533	409	2018-12-18 @ 11:00 am	2018-12-21 @ 11:00 am	0.9 ± 0.3	2018-12-24
9140534	410	2018-12-18 @ 11:00 am	2018-12-21 @ 11:00 am	1.0 ± 0.3	2018-12-24
9140535	411	2018-12-18 @ 11:00 am	2018-12-21 @ 11:00 am	1.3 ± 0.3	2018-12-24
9140536	412	2018-12-18 @ 11:00 am	2018-12-21 @ 11:00 am	1.2 ± 0.4	2018-12-24
9140521	414	2018-12-18 @ 11:00 am	2018-12-21 @ 11:00 am	1.7 ± 0.3	2018-12-24
9140523	414 OFFICE	2018-12-18 @ 11:00 am	2018-12-21 @ 11:00 am	1.0 ± 0.3	2018-12-24
9140531	416	2018-12-18 @ 11:00 am	2018-12-21 @ 11:00 am	1.3 ± 0.4	2018-12-24
9140532	417	2018-12-18 @ 11:00 am	2018-12-21 @ 11:00 am	0.9 ± 0.3	2018-12-24
9140551	500	2018-12-18 @ 11:00 am	2018-12-21 @ 10:00 am	1.4 ± 0.3	2018-12-24
9140548	501	2018-12-18 @ 11:00 am	2018-12-21 @ 10:00 am	1.1 ± 0.3	2018-12-24
9140554	502	2018-12-18 @ 11:00 am	2018-12-21 @ 10:00 am	1.8 ± 0.4	2018-12-24
9140552	502-1	2018-12-18 @ 11:00 am	2018-12-21 @ 10:00 am	1.8 ± 0.4	2018-12-24
9140549	503	2018-12-18 @ 11:00 am	2018-12-21 @ 10:00 am	1.8 ± 0.4	2018-12-24
9140556	504	2018-12-18 @ 11:00 am	2018-12-21 @ 10:00 am	2.2 ± 0.4	2018-12-24
9140550	505	2018-12-18 @ 11:00 am	2018-12-21 @ 10:00 am	1.5 ± 0.4	2018-12-24
9140558	506	2018-12-18 @ 11:00 am	2018-12-21 @ 10:00 am	1.2 ± 0.4	2018-12-24
9140557	506-1	2018-12-18 @ 11:00 am	2018-12-21 @ 10:00 am	1.1 ± 0.3	2018-12-24
9140559	507	2018-12-18 @ 11:00 am	2018-12-21 @ 10:00 am	3.0 ± 0.4	2018-12-24
9140560	508	2018-12-18 @ 11:00 am	2018-12-21 @ 10:00 am	2.0 ± 0.4	2018-12-24
9140569	509	2018-12-18 @ 11:00 am	2018-12-21 @ 10:00 am	2.1 ± 0.4	2018-12-24
9140564	509-1	2018-12-18 @ 11:00 am	2018-12-21 @ 10:00 am	1.9 ± 0.4	2018-12-24
9140565	510	2018-12-18 @ 11:00 am	2018-12-21 @ 10:00 am	1.4 ± 0.3	2018-12-24
9140566	511	2018-12-18 @ 11:00 am	2018-12-21 @ 10:00 am	1.6 ± 0.4	2018-12-24
9140570	512	2018-12-18 @ 11:00 am	2018-12-21 @ 10:00 am	1.0 ± 0.3	2018-12-24
9140555	514	2018-12-18 @ 11:00 am	2018-12-21 @ 10:00 am	1.2 ± 0.4	2018-12-24
9140452	515	2018-12-18 @ 11:00 am	2018-12-21 @ 10:00 am	1.9 ± 0.4	2018-12-24
9140553	515	2018-12-18 @ 11:00 am	2018-12-21 @ 11:00 am	1.6 ± 0.3	2018-12-24
9140561	516	2018-12-18 @ 11:00 am	2018-12-21 @ 10:00 am	1.6 ± 0.4	2018-12-24
9140562	517	2018-12-18 @ 11:00 am	2018-12-21 @ 10:00 am	0.9 ± 0.4	2018-12-24
9140563	518	2018-12-18 @ 11:00 am	2018-12-21 @ 10:00 am	1.2 ± 0.3	2018-12-24
9140593	BETH H OFFICE	2018-12-18 @ 10:00 am	2018-12-21 @ 11:00 am	1.0 ± 0.3	2018-12-24
9140453	BLANK1	2018-12-18 @ 11:00 am	2018-12-21 @ 11:00 am	< 0.3	2018-12-24
9140421	BLANK2	2018-12-18 @ 11:00 am	2018-12-21 @ 11:00 am	< 0.3	2018-12-24
9140446	BLANK3	2018-12-18 @ 11:00 am	2018-12-21 @ 11:00 am	< 0.3	2018-12-24
9140439	BLANK4	2018-12-18 @ 11:00 am	2018-12-21 @ 11:00 am	< 0.3	2018-12-24

December 24, 2018

**\*\* LABORATORY ANALYSIS REPORT \*\***

Radon test result report for:

**BECKER PUBLIC SCHOOLS  
BECKER PRIMARY SCHOOL**

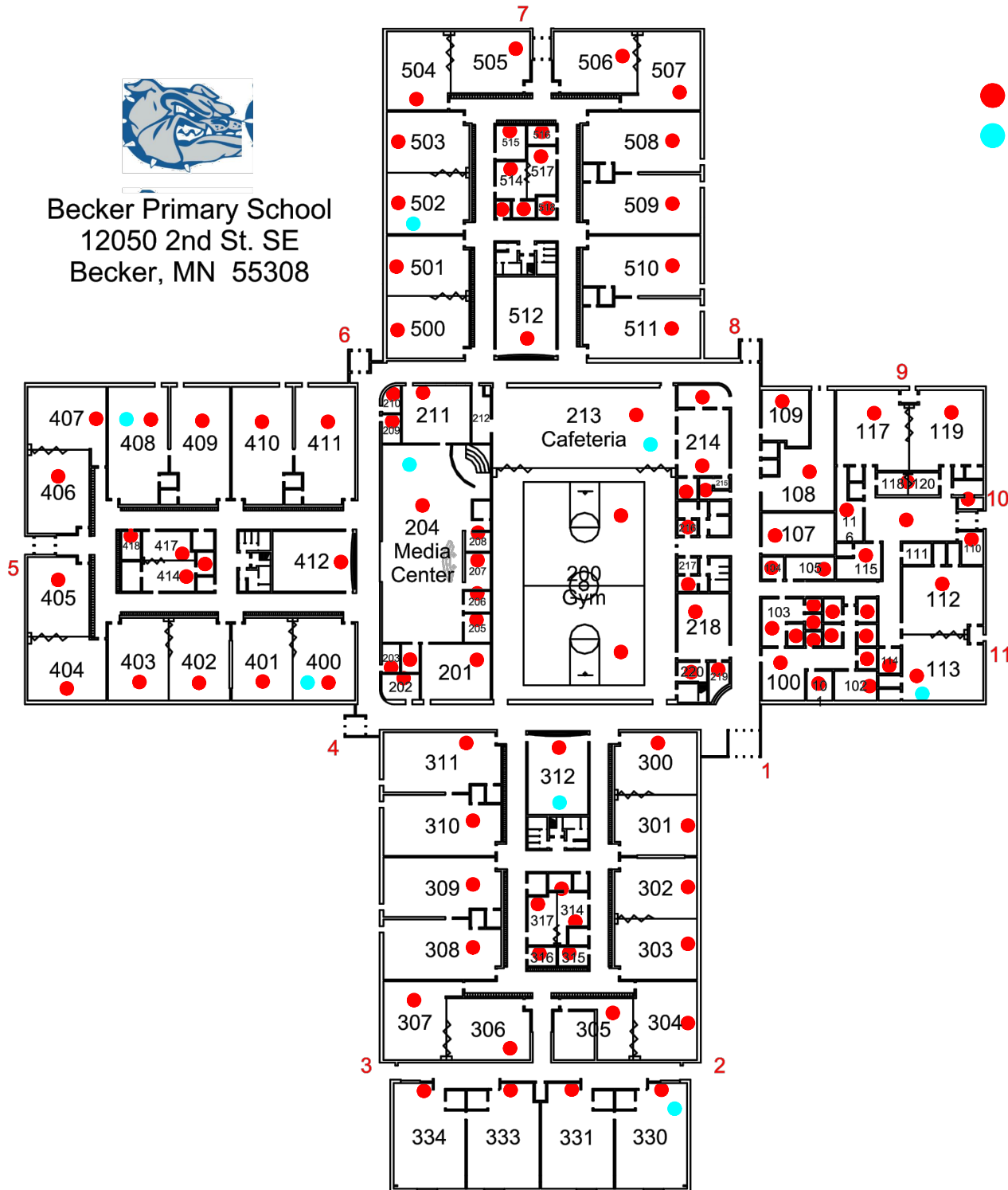
<b>Kit #</b>	<b>Room Id</b>	<b>Started</b>	<b>Ended</b>	<b>pCi/L</b>	<b>Analyzed</b>
9140436	BLANK5	2018-12-18 @ 11:00 am	2018-12-21 @ 11:00 am	< 0.3	2018-12-24
9140585	DAYCARE KITCHEN	2018-12-18 @ 10:00 am	2018-12-21 @ 10:00 am	1.0 ± 0.3	2018-12-24
9140514	GYM NORTH	2018-12-18 @ 11:00 am	2018-12-21 @ 11:00 am	0.8 ± 0.4	2018-12-24
9140512	GYM SOUTH	2018-12-18 @ 11:00 am	2018-12-21 @ 11:00 am	1.0 ± 0.4	2018-12-24
9140590	JENI W OFFICE	2018-12-18 @ 10:00 am	2018-12-21 @ 10:00 am	0.9 ± 0.3	2018-12-24
9140568	KITCHEN OFFICE	2018-12-18 @ 10:00 am	2018-12-21 @ 10:00 am	1.3 ± 0.3	2018-12-24
9140595	MAIN OFFICE PANTRY	2018-12-18 @ 10:00 am	2018-12-21 @ 10:00 am	1.6 ± 0.4	2018-12-24
9140591	MS TONYA OFFICE	2018-12-18 @ 10:00 am	2018-12-21 @ 10:00 am	0.8 ± 0.3	2018-12-24
9140594	TRACI G OFFICE	2018-12-18 @ 10:00 am	2018-12-21 @ 10:00 am	1.1 ± 0.4	2018-12-24

Air Chek 1936 Butler Bridge Rd, Mills River, NC 28759-3892 Phone: (828) 684-0893 Fax: (828) 684-8498

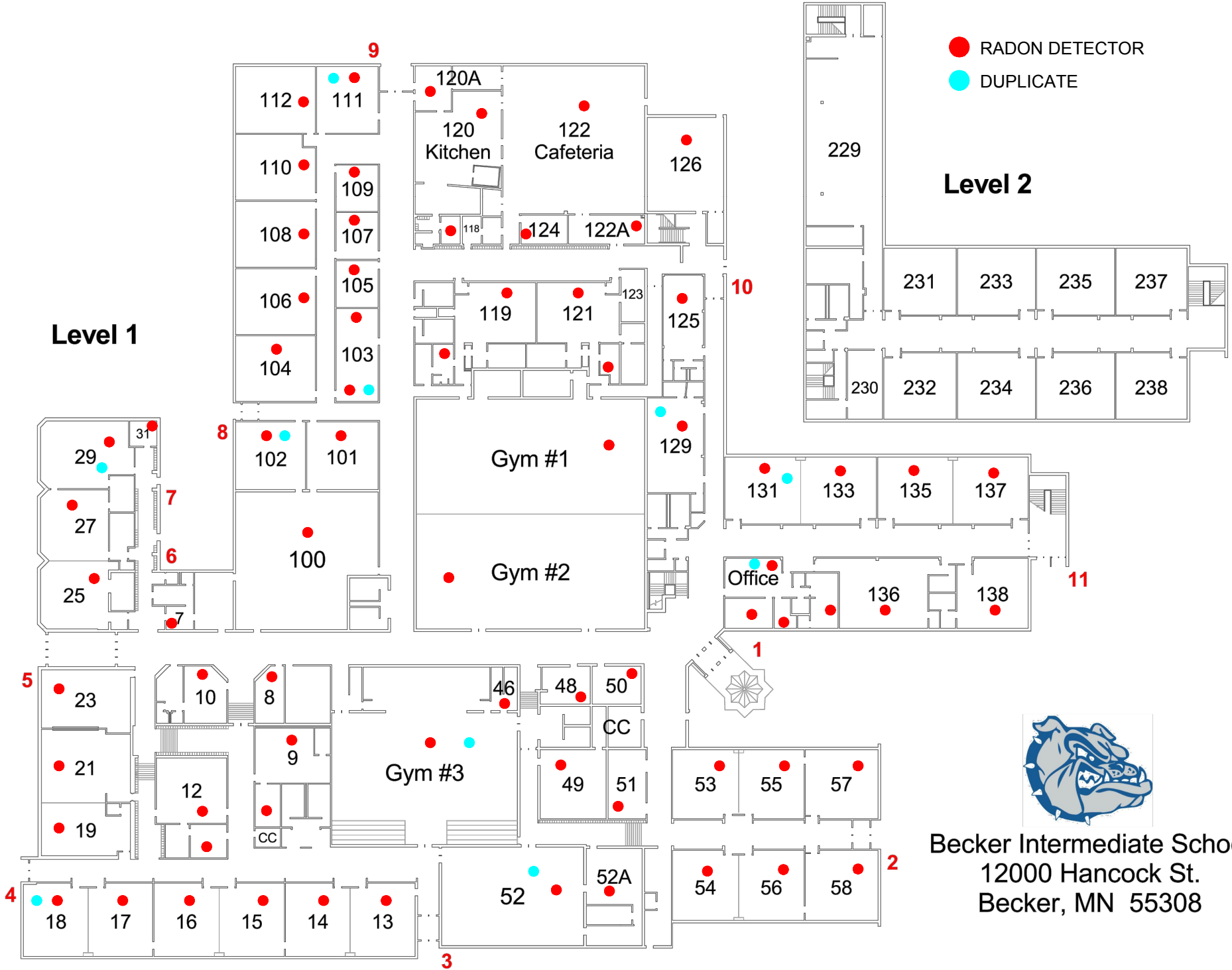


Becker Primary School  
12050 2nd St. SE  
Becker, MN 55308

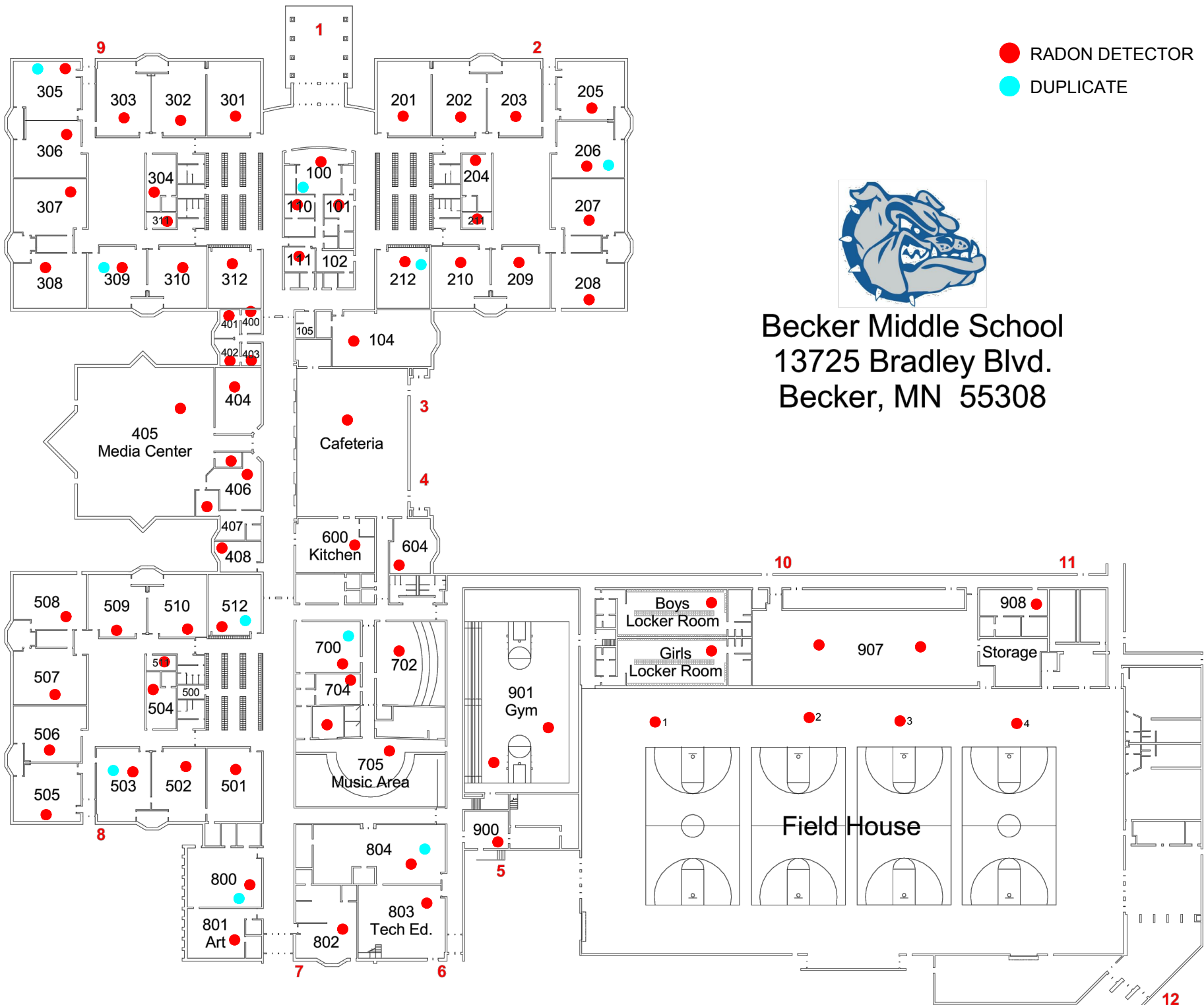
- RADON DETECTOR
- DUPLICATE



- RADON DETECTOR
- DUPLICATE



Becker Intermediate School  
 12000 Hancock St.  
 Becker, MN 55308



**Becker Middle School**  
13725 Bradley Blvd.  
Becker, MN 55308





● RADON DETECTOR  
● DUPLICATE



Becker High School  
12000 Hancock St.  
Becker, MN 55308

# **Appendix C**

## *Chain of Custody*

Chain-of-Custody Cover Page



IEA, Inc.  
9201 West Broadway, Suite 600  
Brooklyn Park, MN 55445  
763-315-7900

Device Type (circle)      Radtrak<sup>2</sup>      Air Chek      Pro Chek      CRM

Project Number      201810978

District: Becker      Building: 13725 Bradley Blvd  
Address: Becker Mn 55308

Project Manager: Sara D.

Date Disbursed: 12/18/18      Time: 7:00 AM

Disbursing Measurement Professional Name: Amanda Edberg      Signature: [Signature]

Date Retrieved: 12/21/18      Time Retrieved: 7:00 AM

Retrieving Measurement Professional Name: Amanda Edberg      Signature: [Signature]

Date sent to Analytical Lab: \_\_\_\_\_      Time: \_\_\_\_\_

Tracking Number: \_\_\_\_\_      Date Lab Received: \_\_\_\_\_  
Received by: \_\_\_\_\_

# Chain-of-Custody Cover Page



IEA, Inc.  
9201 West Broadway, Suite 600  
Brooklyn Park, MN 55445  
763-315-7900

Device Type (circle)      Radtrak<sup>2</sup>      Air Chok      Pro Chok      CRM

Project Number      201810978

District:      Becker

Building:      12000 Hancock St.  
Address:      Becker, MN 55308

Project Manager:      Sara D.

Date Disbursed:      12/18/18      Time:      7:00 AM

Disbursing Measurement Professional Name:      Amanda Edberg      Signature:      [Signature]

Date Retrieved:      12/21/18      Time Retrieved:      7:00 AM

Retrieving Measurement Professional Name:      Amanda Edberg      Signature:      [Signature]

Date sent to Analytical Lab:      \_\_\_\_\_      Time:      \_\_\_\_\_

Tracking Number:      \_\_\_\_\_      Date Lab Received:      \_\_\_\_\_  
by:      \_\_\_\_\_

Chain-of-Custody Cover Page



IEA, Inc.  
9201 West Broadway, Suite 600  
Brooklyn Park, MN 55445  
763-315-7900

Device Type (circle)      Radtrak<sup>2</sup>      Air Chek      Pro Chek      CRM

Project Number      2018 10970

District: Becker      Building: 12000 Hancock St.  
Address: Becker, Mn

Project Manager: Sara D.

Date Disbursed: 12/18/18      Time: 7:00 AM

Disbursing Measurement Professional Name: Kennedy Peterson Signature: K Peterson

Date Retrieved: 12/21/18      Time Retrieved: 7:00 AM

Retrieving Measurement Professional Name: Kennedy Peterson Signature: K Peterson

Date sent to Analytical Lab: \_\_\_\_\_ Time: \_\_\_\_\_

Tracking Number: \_\_\_\_\_ Date Lab Received: \_\_\_\_\_  
Received by: \_\_\_\_\_

Chain-of-Custody Cover Page



IEA, Inc.  
9201 West Broadway, Suite 600  
Brooklyn Park, MN 55445  
763-315-7900

Device Type (circle) Radtrak<sup>2</sup> Air Chok Pro Chok CRM

Project Number 201810978

District: Becker School district

Building: 12050 Hancocks +  
Address: Becker, Mn 55308

Project Manager: Sara D.

Date Disbursed: 12/18/18 Time: 6:30 AM

Disbursing Measurement Professional Name: Kennedy Petersen Signature: K Petersen

Date Retrieved: 12/21/18 Time Retrieved: 7:00 AM

Retrieving Measurement Professional Name: Kennedy Petersen Signature: K Petersen

Date sent to Analytical Lab: \_\_\_\_\_ Time: \_\_\_\_\_

Tracking Number: \_\_\_\_\_ Date Lab Received: \_\_\_\_\_  
Received by: \_\_\_\_\_

# **Appendix D**

*MDH Reporting Form*

# School Radon Testing Reporting Form

According to Minnesota Statute 123B.571 subd. 3, a school district that has tested its school buildings for the presence of radon shall report the results of its tests to the Department of Health. Please use this form to submit information about the most recent round or cycle of testing conducted for each building.

## Instructions

1. Complete one form for each building tested. In this case, a building is defined as an occupied facility with a unique address. This includes administrative buildings.
2. Include this form, raw data (e.g. laboratory report) and a building map.
3. Submit this form when all work is completed for a round of testing. This includes reporting to the school board, and follow-up testing and post-mitigation testing, if applicable.
4. Email information to [health.indoorair@state.mn.us](mailto:health.indoorair@state.mn.us).

## Contact Information

Name:	
Mailing Address:	
Phone:	Email:

## Initial Radon Testing Information

School Building Name:	
School District & District Number:	
Building Address:	
Test Kit Manufacturer:	Device Name:
Date of Kit Retrieval (DD/MM/YY):	Length of Test (days):
How many rooms were tested?	
Does the test period include weekends? <input type="checkbox"/> Yes <input type="checkbox"/> No	
Does the test period include school breaks or holidays? <input type="checkbox"/> Yes <input type="checkbox"/> No	



SCHOOL RADON TESTING REPORTING FORM

<p>Were all frequently-occupied ground contact rooms tested?<sup>1</sup>      <input type="checkbox"/> Yes   <input type="checkbox"/> No</p> <p>If no, did you attempt to test all frequently occupied ground contact rooms, meaning test kits were placed in all these rooms? <input type="checkbox"/> Yes   <input type="checkbox"/> No</p>
<p>How many rooms had results <math>\geq 4</math> pCi/L?:</p>
<p>Were the results reported at a school board meeting?      <input type="checkbox"/> Yes   <input type="checkbox"/> No</p>

## Follow-up Testing, Mitigation, & Post-Mitigation Testing

If one or more rooms tested  $\geq 4$  pCi/L, please answer the questions below:

<p>How many rooms had follow-up testing?:</p>		
<p>Number of rooms with follow-up results</p>	<p><math>\geq 4</math> pCi/L:</p>	<p>&lt; 4 pCi/L:</p>
<p>Of the rooms that had test results <math>\geq 4</math> pCi/L, how many rooms were:</p>		
<p>mitigated by HVAC balancing or operational changes? :</p>		
<p>mitigated by installation of active soil depressurization?:</p>		
<p>addressed through other corrective measures?<sup>2</sup>:</p>		
<p>What was the cost of the installation and/or HVAC service work, to mitigate radon? \$</p>		
<p>What is the known or anticipated annual operating cost of mitigation (estimate)? \$</p>		
<p>After radon mitigation, how many rooms were retested?:</p>		
<p>Post mitigation results (# of rooms)</p>	<p><math>\geq 4</math> pCi/L:</p>	<p>&lt; 4 pCi/L:</p>

<sup>1</sup> This includes classrooms, offices, break rooms, laboratories, cafeterias, libraries, auditoriums, gymnasiums, etc. It includes rooms on grade and rooms above unoccupied spaces that are in contact with the ground, such as rooms above storage rooms, crawl spaces, tunnels, and boiler rooms. If only a sample or portion of rooms were tested, then respond with 'no'.

<sup>2</sup> 'Other corrective measures' could include moving staff out of a room and making a room unoccupied or trying to seal radon entry points.