



## **ALEDO ISD BOARD MEETING TEMPLATE**

**MEETING DATE:** November 2, 2015

**AGENDA ITEM:** Consider Approval of Final Design and Exterior Elevation for Coder Elementary School Controlled Entry Addition and Renovation Project

**PRESENTER:** Earl Husfeld

**ALIGNS TO BOARD GOAL(S):** Financial/Facilities – The District shall exhibit excellence in financial and facility planning, management, and stewardship.

**BACKGROUND INFORMATION:**

- The Coder Elementary School Controlled Entry Addition and Renovation Project was included within the safety and security component of the District's successful 2015 Bond Election.
- Conceptual plans for this project were discussed and reviewed by the AISD 2025 Committee on a number of occasions.

**ADMINISTRATIVE CONSIDERATIONS:**

- After the Board of Trustees' approval of the general schematic design of this project on July 20<sup>th</sup>, additional planning and design meetings were held with district staff to finalize the design and exterior elevation shown on the following pages.
- The final design and exterior elevation being presented to you were reviewed, discussed, and ratified by the Bond Advisory Committee on October 20<sup>th</sup>. Members of this committee are in attendance at tonight's meeting.
- Leesa Vardeman and Ross Rivers, with VLK Architects, will present the final design and exterior elevation to you this evening and answer any questions you may have concerning this project.

**FISCAL NOTE:**

There is no fiscal impact with approval of this item. The financial impact will arise when the Board of Trustees approve a contract for the construction of this project.

**ADMINISTRATIVE RECOMMENDATION:**

The Administration recommends the Board of Trustees approve the final design and exterior elevation for the Coder Elementary School Controlled Entry Addition and Renovation Project as presented.



# **CODER ELEMENTARY SCHOOL**

ADDITION AND CONTROLLED ENTRY

ENTRY AND INTERIOR FINISHES



VLK | ARCHITECTS



# ALEDO ISD DESIGN TEAM

Dr. Derek Citty	Superintendent
Amy Sadler	Principal at Coder Elementary School
Cheryl Wooten	Director of Special Programs
Leonard Torres	Director of Maintenance
Brooks Moore	Director of Technology
Earl Husfeld	Chief Financial Officer



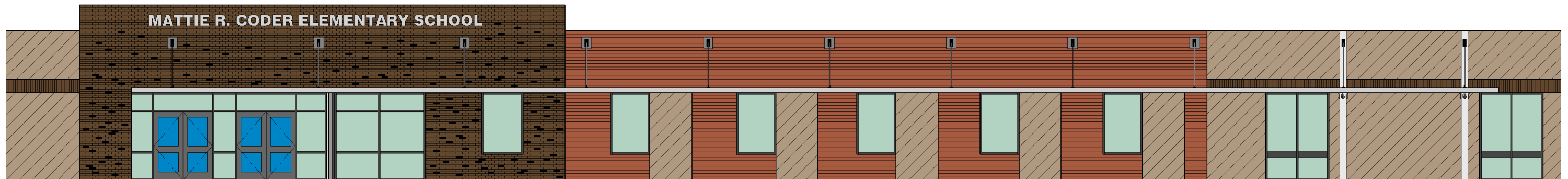
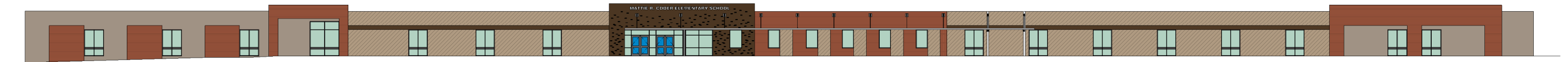
\* A- TYPICAL CLASSROOM IS 600 SF IN ORIGINAL BUILDING.

\* B- TYPICAL CLASSROOM IS 775 SF IN ADDITION.



## CODER ELEMENTARY SCHOOL

ADDITION AND CONTROLLED ENTRY



**CODER ELEMENTARY SCHOOL**  
ADDITION AND CONTROLLED ENTRY

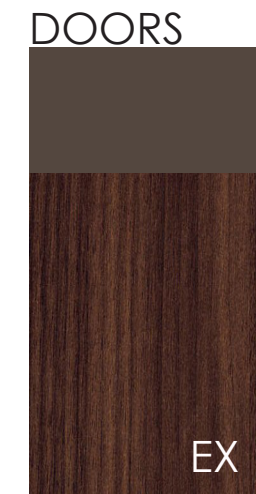
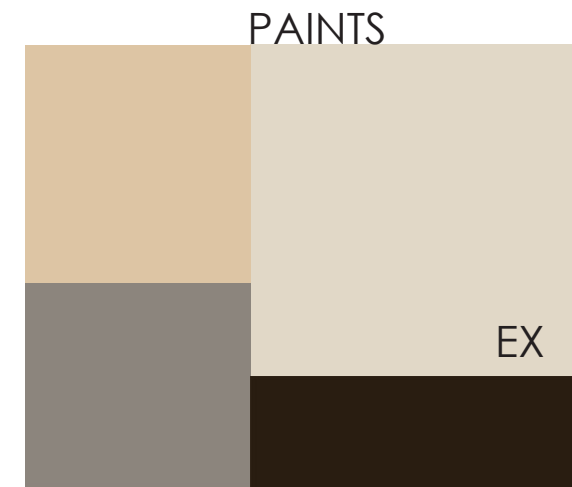
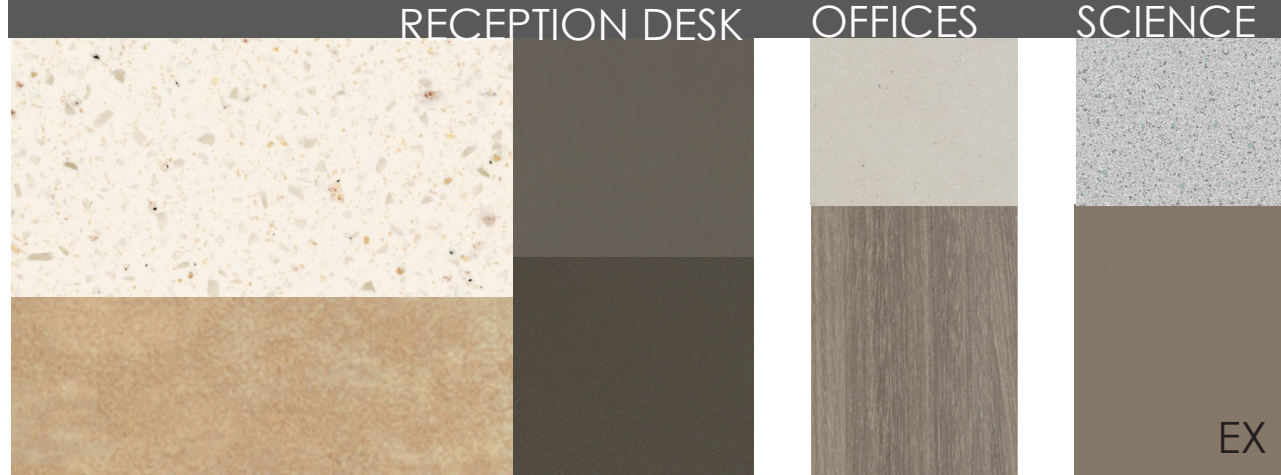


**CODER ELEMENTARY SCHOOL**  
ADDITION AND CONTROLLED ENTRY

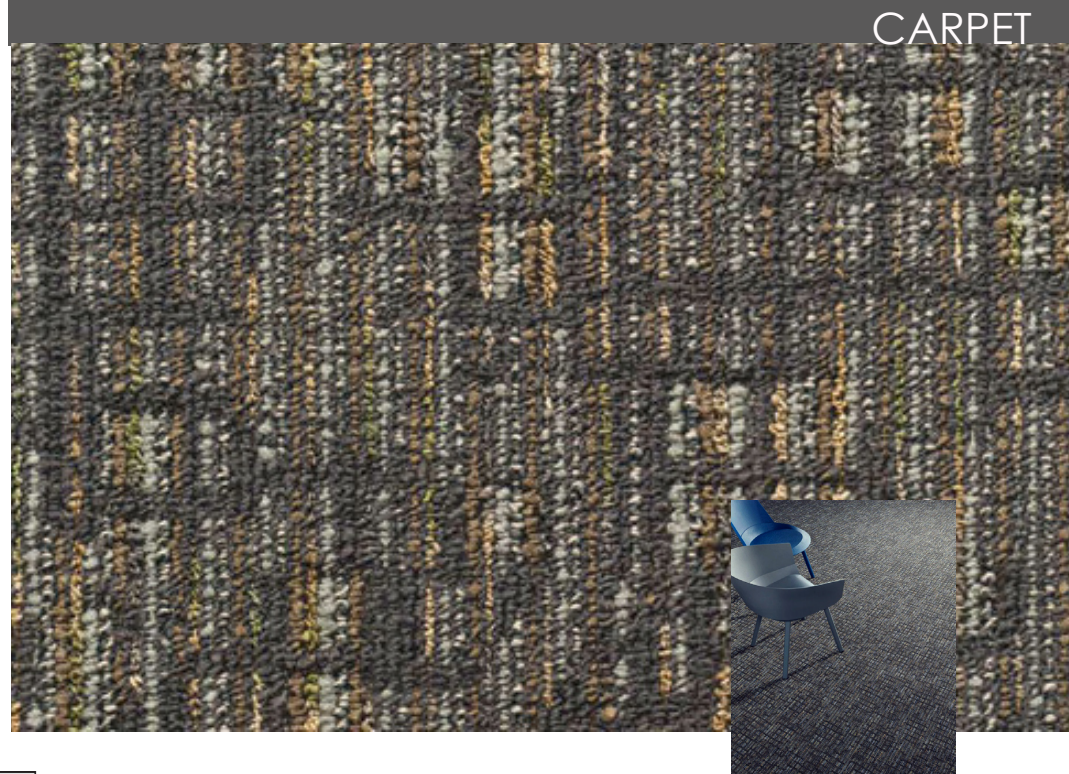
# INTERIOR FINISHES

EX = EXISTING FINISH

## COUNTERTOPS & CABINETS



## FLOORING



CARPET

VCT



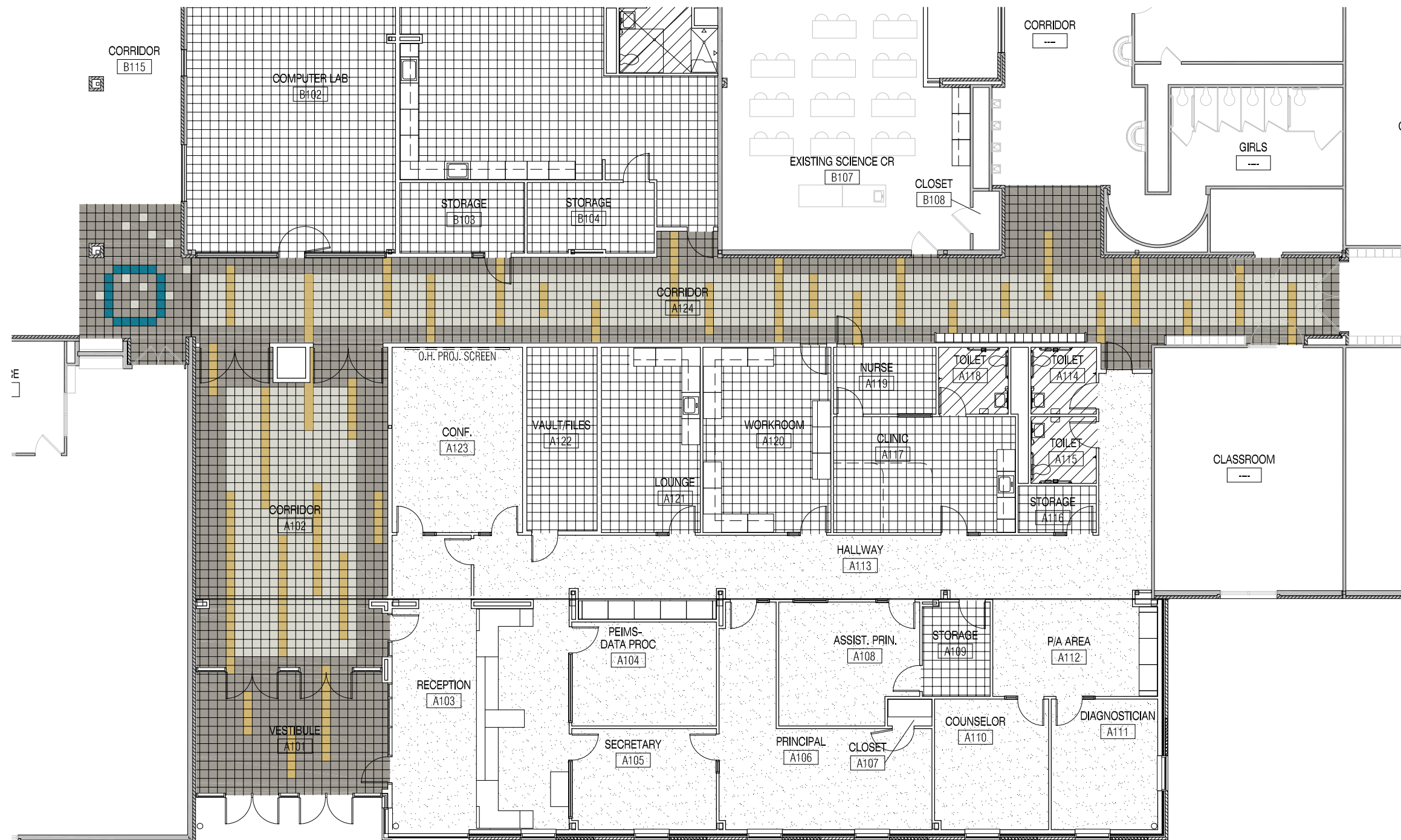
TACKWALL

WALL TILE

WALLS



**CODER ELEMENTARY SCHOOL**  
ADDITION AND CONTROLLED ENTRY







---

THANK YOU!



VLK | ARCHITECTS