



Denton
Independent
School
District

Quarterly Report 1Q21



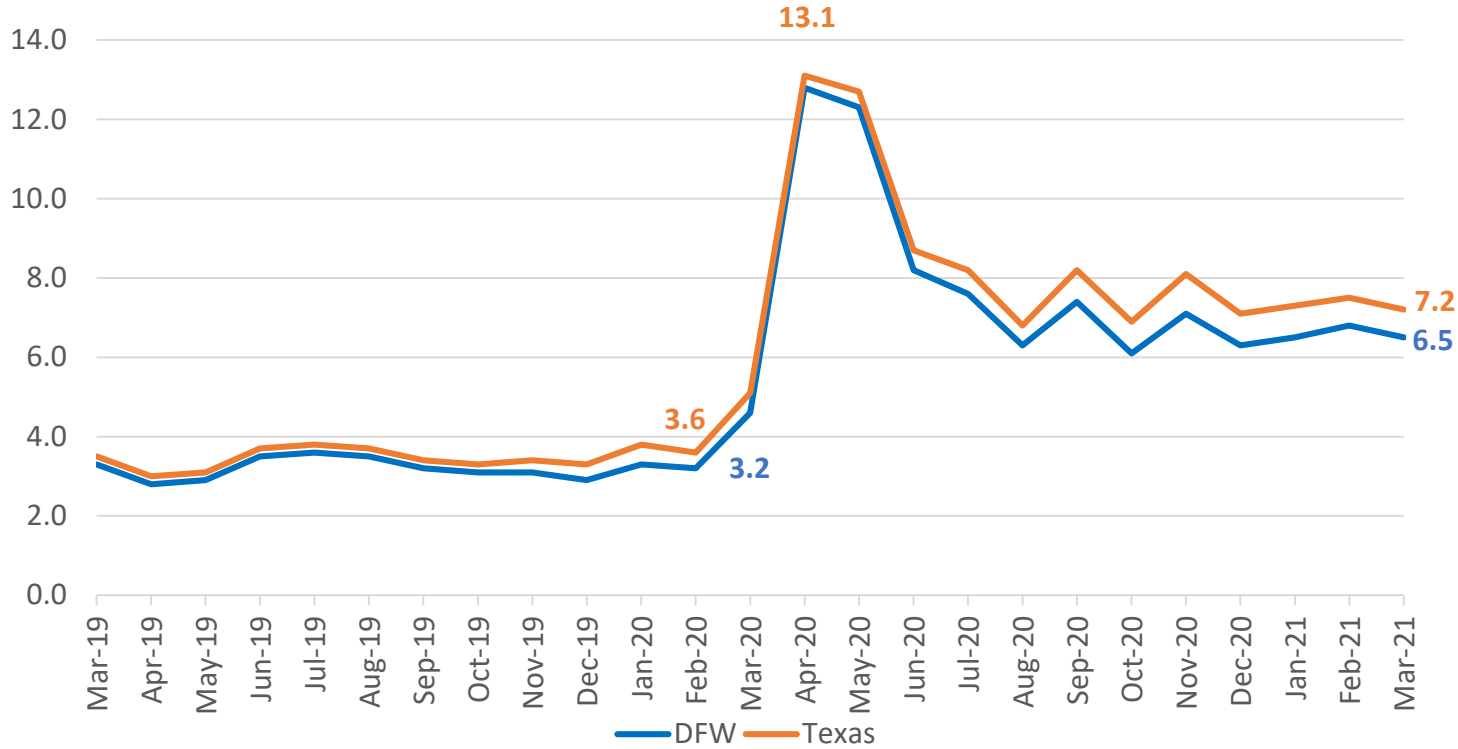
TEMPLETON
DEMOGRAPHICS

hanleywood | metrostudy

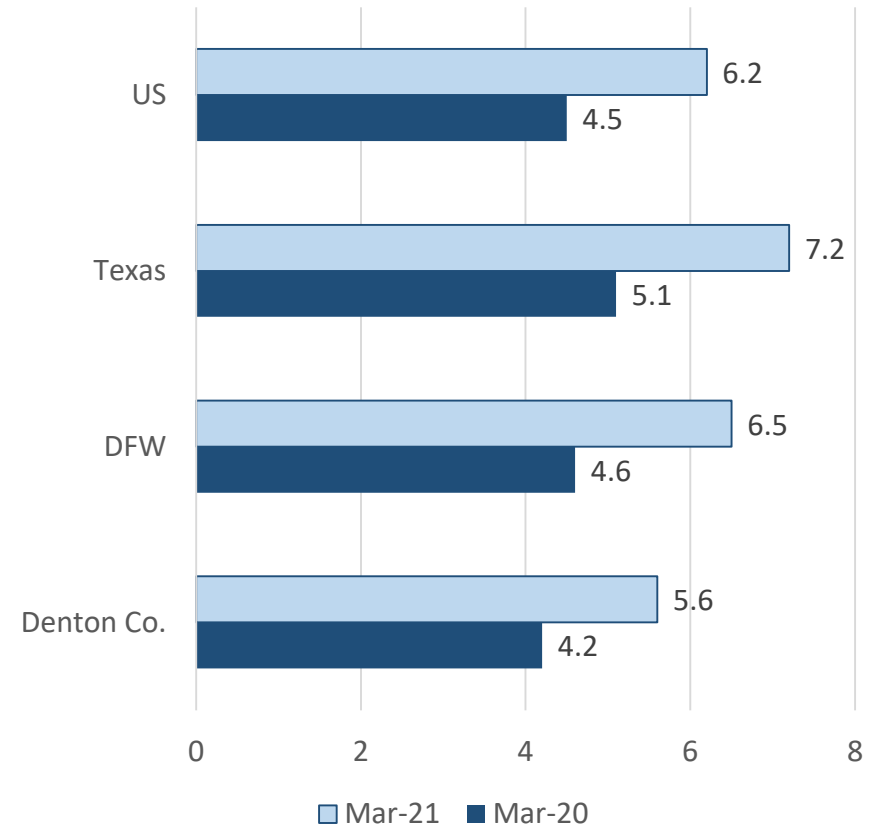


DFW MSA Economic Update

Unemployment Rate, Jan 2018 - Mar 2021

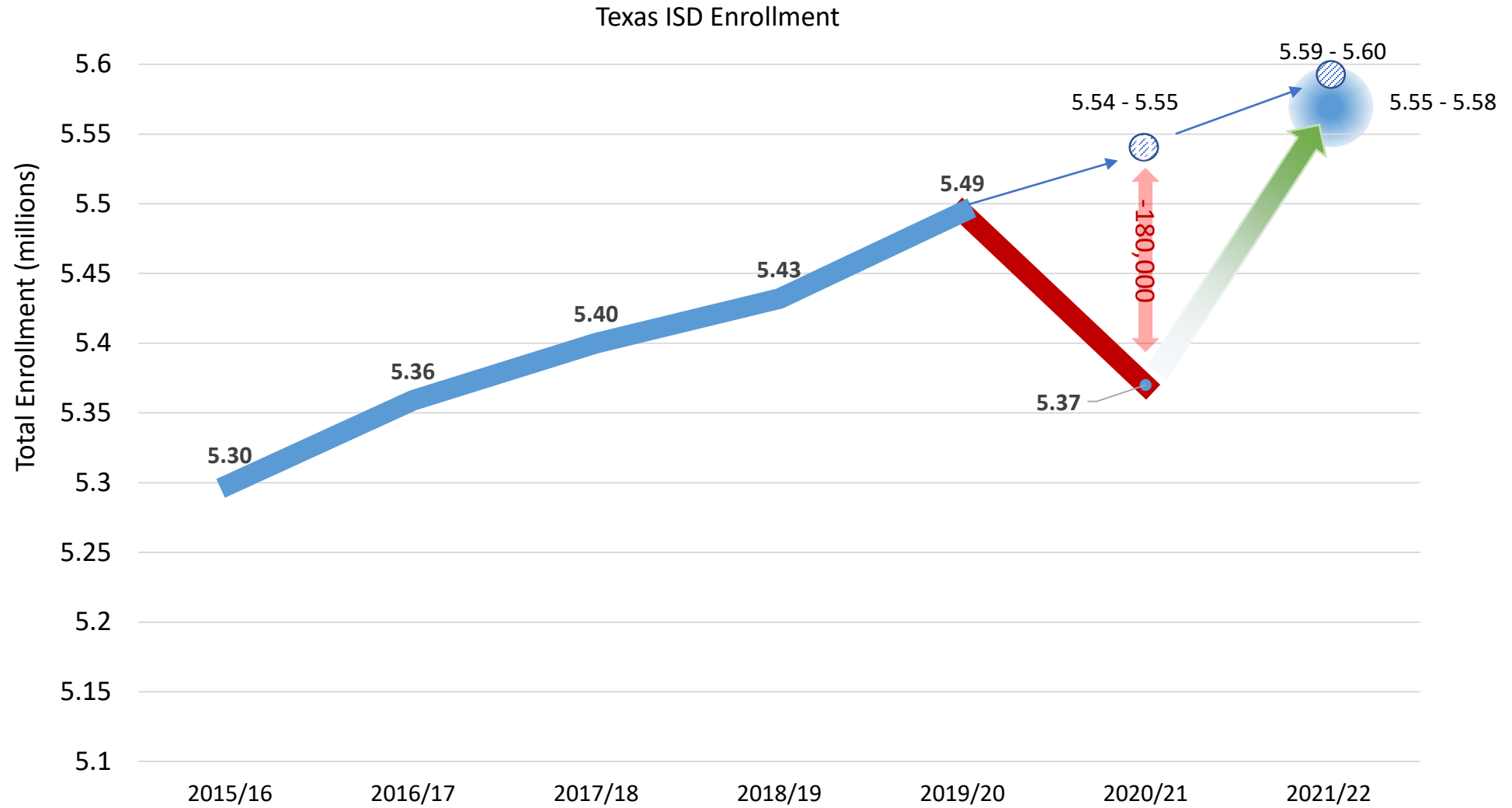


Unemployment Rate, Year Over Year





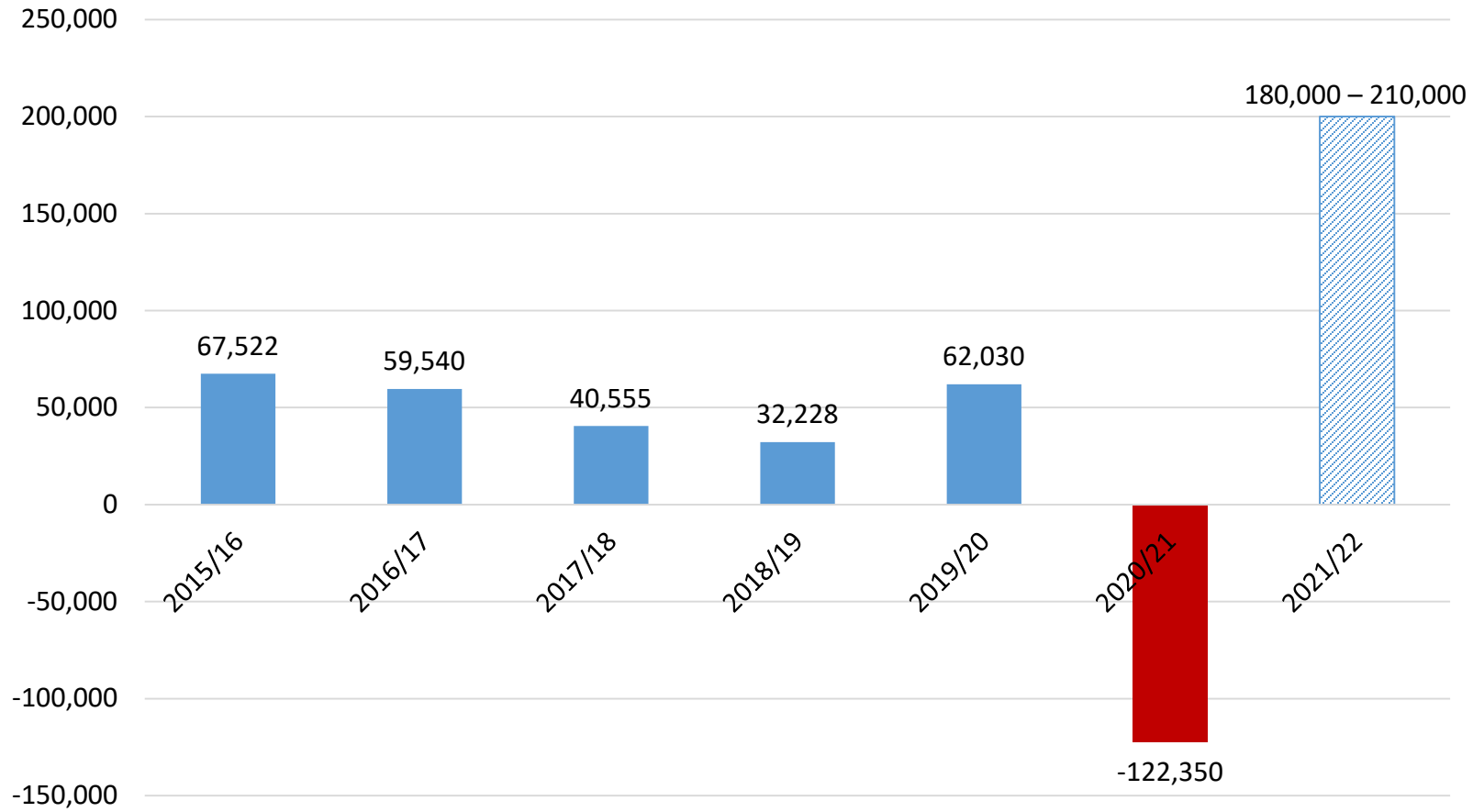
State Enrollment Trends





State Enrollment Trends

Texas ISD Enrollment Change

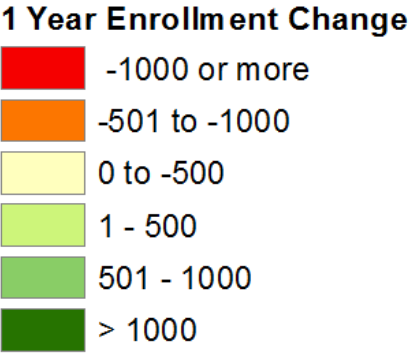
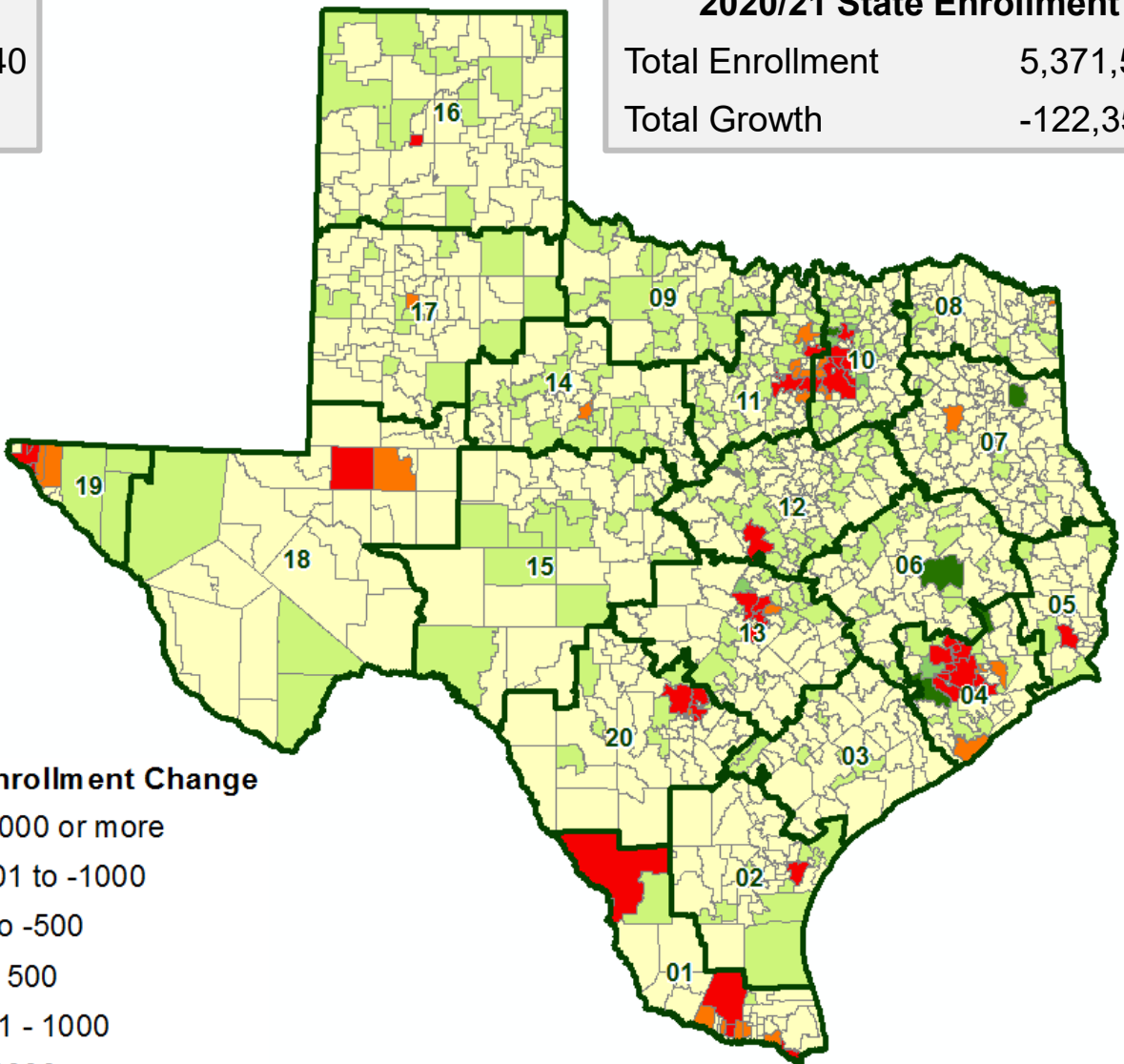
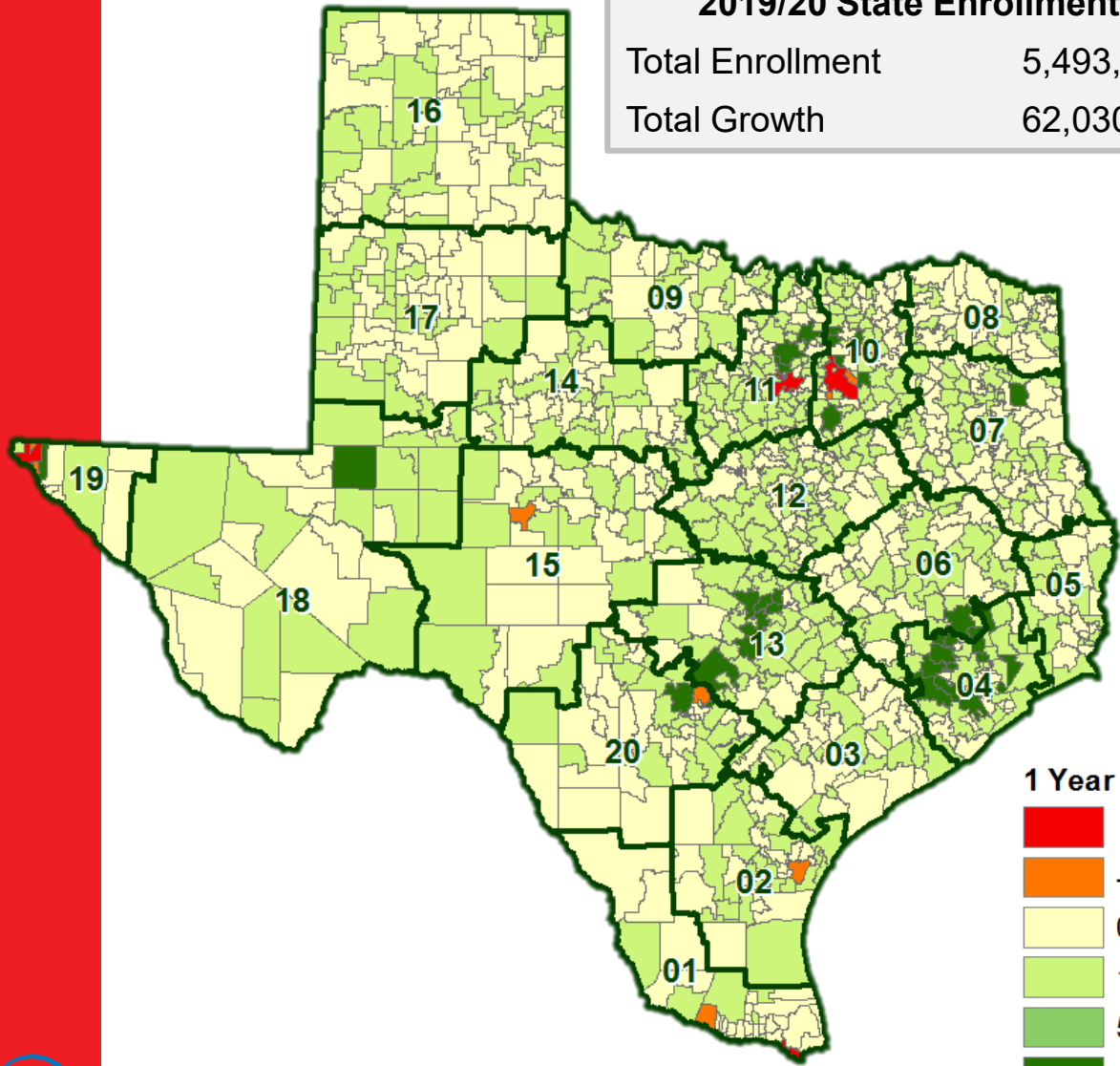




State Enrollment Trends

2019/20 State Enrollment
Total Enrollment 5,493,940
Total Growth 62,030

2020/21 State Enrollment
Total Enrollment 5,371,590
Total Growth -122,350

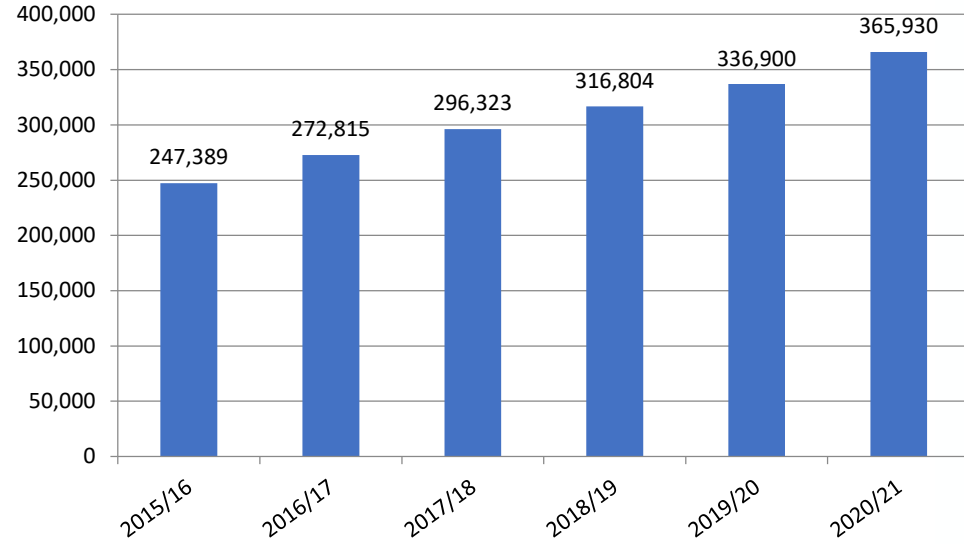




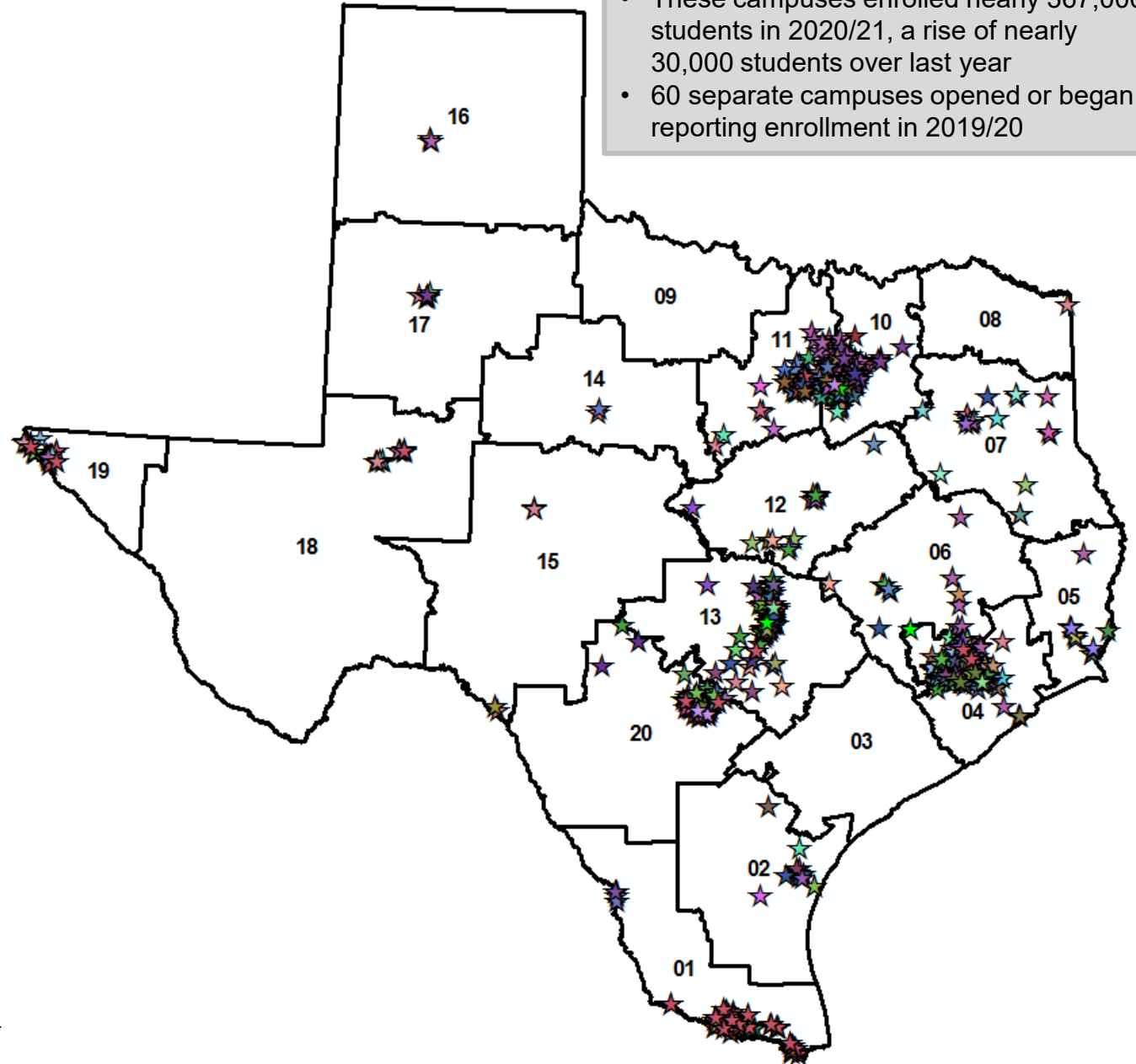
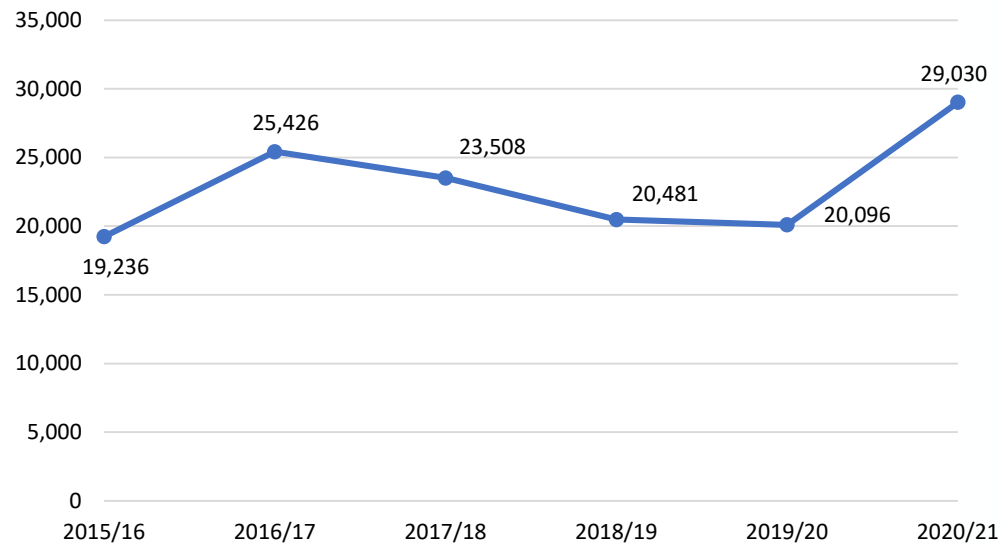
Charter Schools in Texas

- There are currently more than 830 charter school campuses open across Texas
- These campuses enrolled nearly 367,000 students in 2020/21, a rise of nearly 30,000 students over last year
- 60 separate campuses opened or began reporting enrollment in 2019/20

Total Charter Enrollment



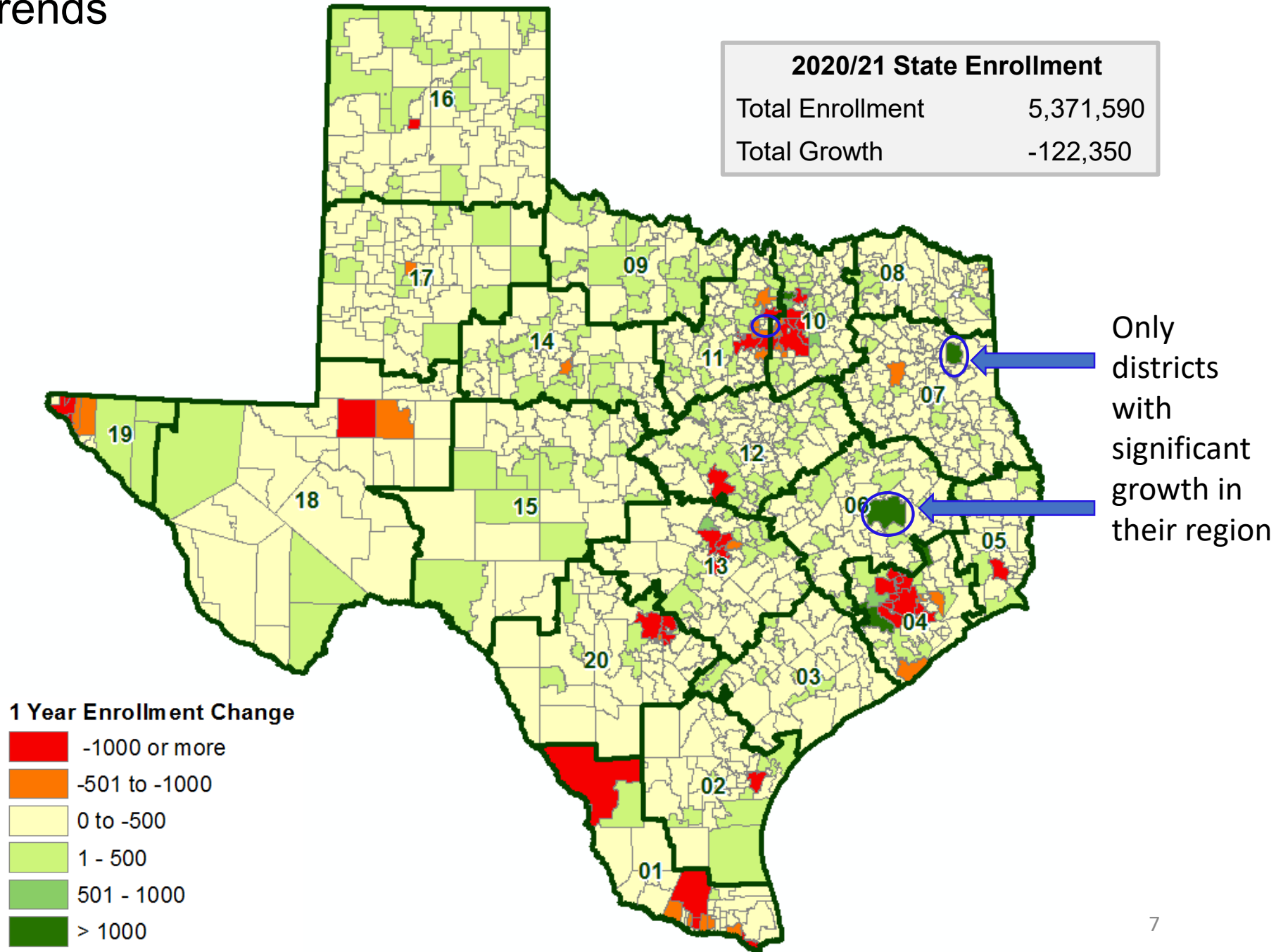
Charter Enrollment Change





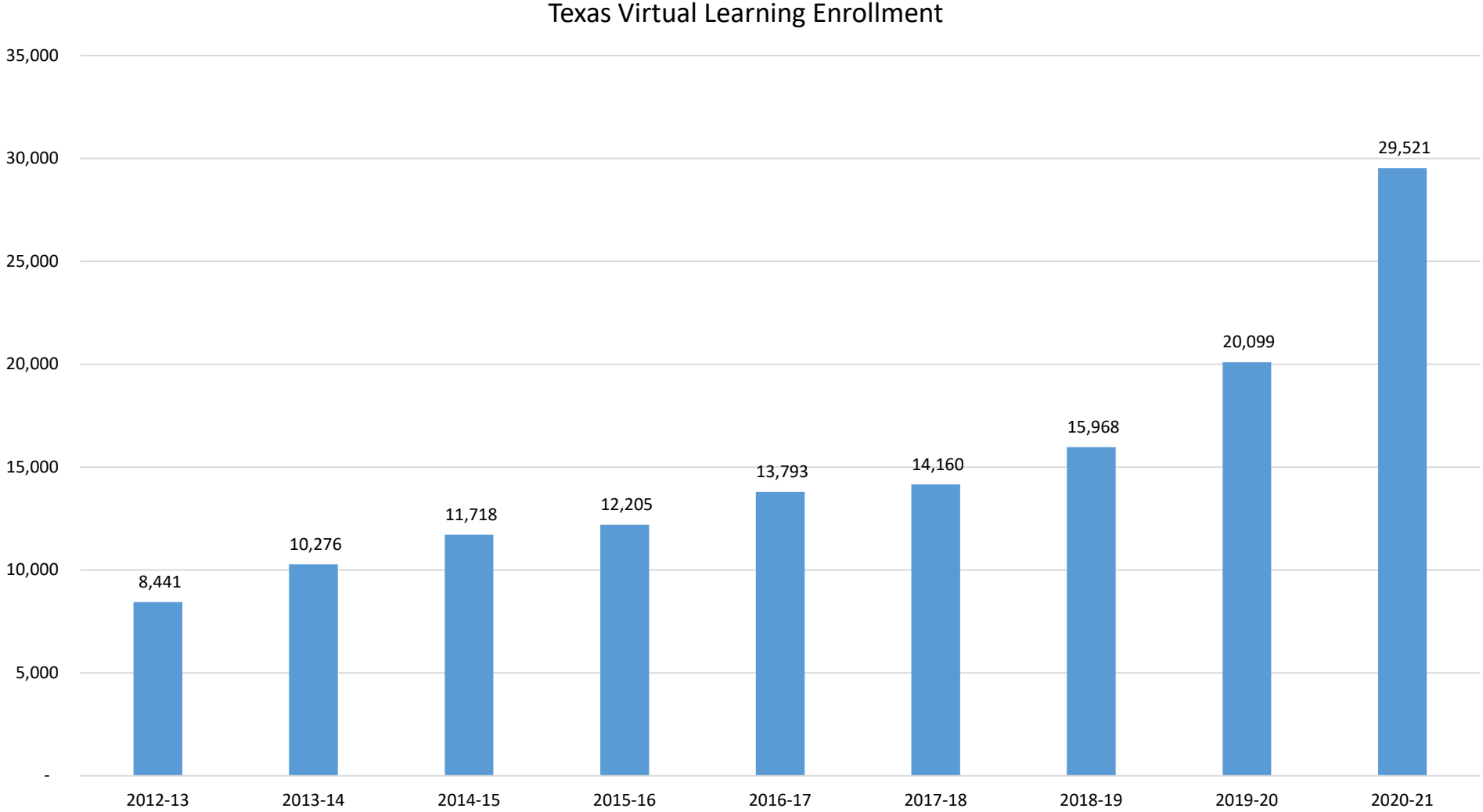
State Enrollment Trends

2020/21 State Enrollment	
Total Enrollment	5,371,590
Total Growth	-122,350





Virtual Learning Programs



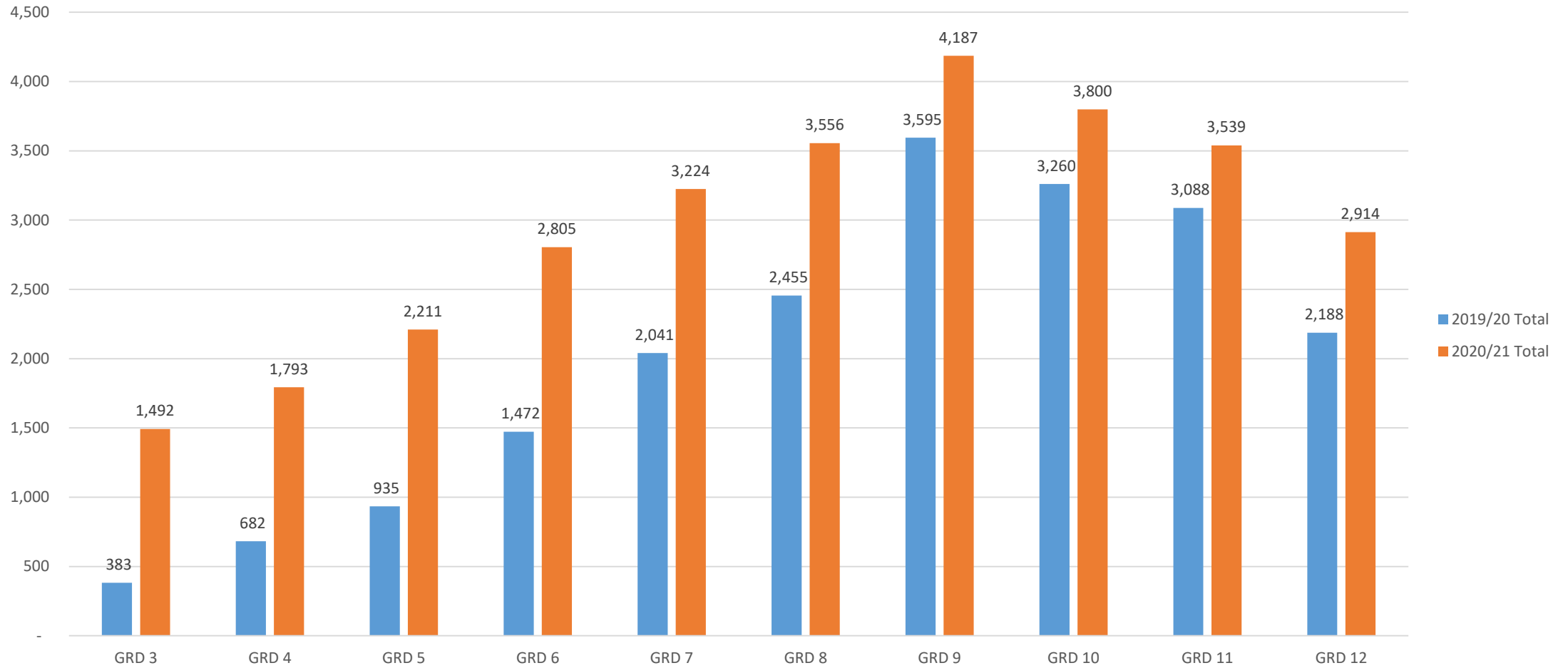
Those 7 campuses added more than 9,400 students in 2020/21, a growth rate of 47%





Virtual Learning Programs

Virtual Learning Grade Level Enrollment





Virtual Learning Programs... Ahead of the Curve

5 traditional ISDs and 2 charter schools offered a virtual only campus for statewide enrollment before the 2020/21 school year

Hallsville ISD



TEXAS
VIRTUAL ACADEMYSM

POWERED BY STRIDE K12

ResponsiveEd

OUR iSCHOOL HIGH
campuses are rigorous, mastery-based, blended-learning, college-preparatory schools with an emphasis on community-specific academic pathways, and character education.

ilUniversity Prep

A Grapevine-Colleyville ISD Virtual Academy

Huntsville ISD



TEXAS
ONLINE PREPARATORY
SCHOOL

Houston ISD



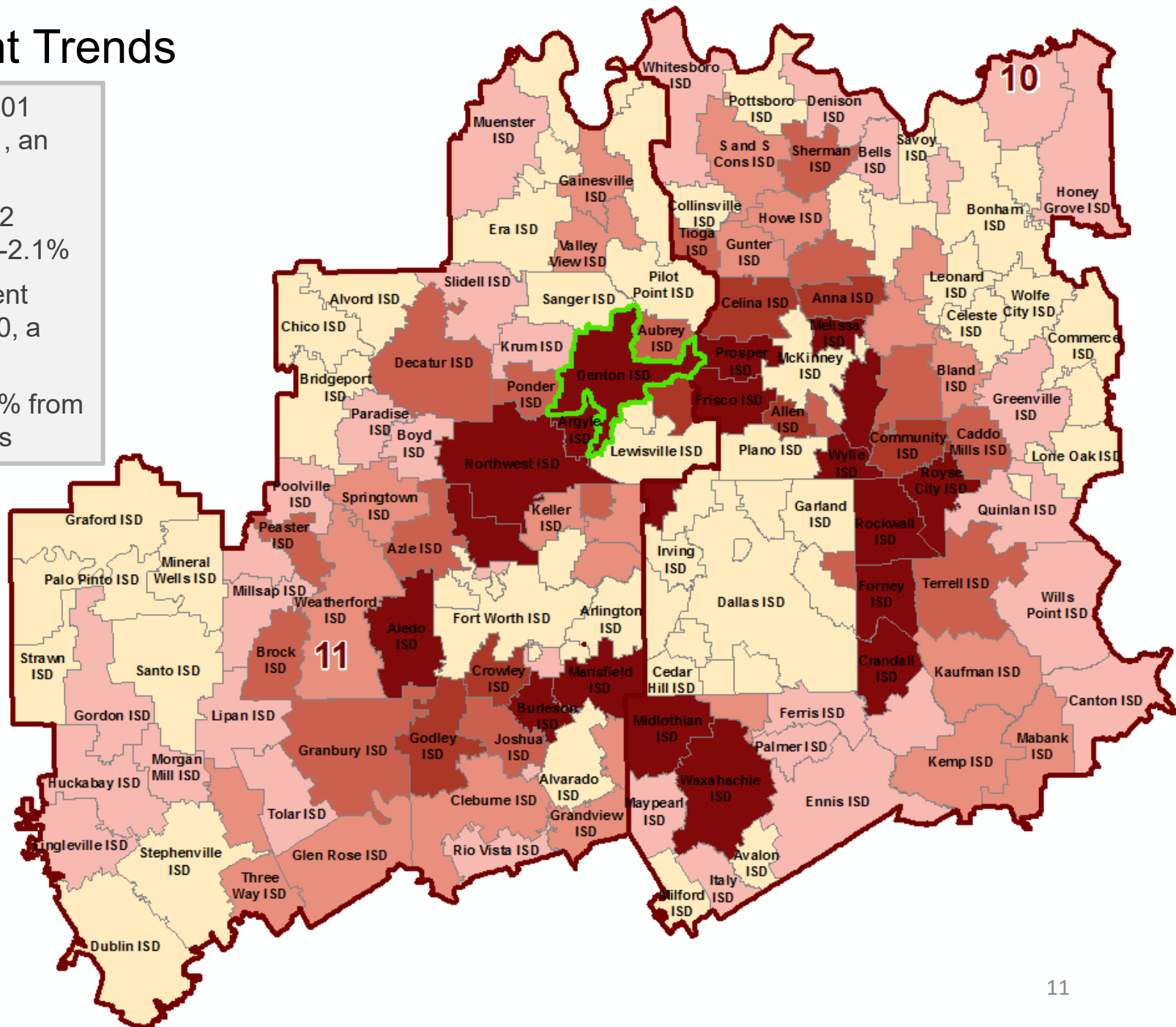
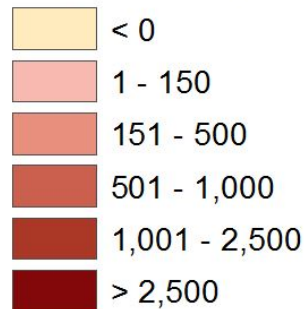
TEXAS
CONNECTIONS
ACADEMY



Region 10 & 11 Enrollment Trends

- Denton ISD enrollment has risen by 2,701 students between 2015/16 and 2020/21, an increase of 9.8%
- Denton ISD enrollment has declined 652 students from 2019/20, an decrease of -2.1%
- Region 10 has seen an overall enrollment decline of 17,918 students from 2019/20, a decline of -2.2%
- Region 11 enrollment has declined -2.9% from 2019/20, a difference of 17,104 students

5 Yr Enrollment Change





Region 11 Enrollment Trends

Rank	DISTRICT	2015/16 Enrollment	2019/20 Enrollment	2020/21 Enrollment	5-YEAR CHANGE (15/16-20/21)	ANNUAL CHANGE (19/20-20/21)	5-YEAR PCT Growth	1-YEAR PCT Growth
1	Northwest ISD	20,967	25,040	25,383	4,416	343	21.1%	1.4%
2	Denton ISD	27,566	30,919	30,267	2,701	-652	9.8%	-2.1%
3	Eagle Mt-Saginaw ISD	19,191	21,024	21,245	2,054	221	10.7%	1.1%
4	Argyle ISD	2,243	3,483	3,795	1,552	312	69.2%	9.0%
5	Aledo ISD	5,249	6,437	6,723	1,474	286	28.1%	4.4%
6	Mansfield ISD	33,814	35,669	35,127	1,313	-542	3.9%	-1.5%
7	Burleson ISD	11,384	12,810	12,547	1,163	-263	10.2%	-2.1%
8	Little Elm ISD	7,190	8,065	8,108	918	43	12.8%	0.5%
9	Godley ISD	1,778	2,348	2,443	665	95	37.4%	4.0%
10	Crowley ISD	15,100	15,996	15,731	631	-265	4.2%	-1.7%
11	Granbury ISD	6,989	7,474	7,469	480	-5	6.9%	-0.1%
12	Brock ISD	1,299	1,606	1,765	466	159	35.9%	9.9%
13	Azle ISD	6,242	6,815	6,685	443	-130	7.1%	-1.9%
14	Decatur ISD	2,997	3,464	3,429	432	-35	14.4%	-1.0%
15	Joshua ISD	5,144	5,618	5,490	346	-128	6.7%	-2.3%
16	Aubrey ISD	2,316	2,593	2,644	328	51	14.2%	2.0%
17	Peaster ISD	1,059	1,322	1,382	323	60	30.5%	4.5%
18	Ponder ISD	1,274	1,579	1,585	311	6	24.4%	0.4%
19	Carroll ISD	8,065	8,525	8,324	259	-201	3.2%	-2.4%
20	Springtown ISD	3,406	3,584	3,619	213	35	6.3%	1.0%





DFW New Home Ranking Report

ISD Ranked by Annual Closings – 1Q21

Rank	District Name	Annual Starts	Annual Closings	Inventory	VDL	Future
1	Denton ISD*	3,409	2,894	1,890	3,789	34,800
2	Northwest ISD	2,891	2,700	1,431	3,125	24,696
3	Prosper ISD	2,914	2,650	1,741	3,653	19,208
4	Frisco ISD	2,323	2,414	1,503	2,317	8,562
5	Eagle Mt.-Saginaw ISD	2,007	2,295	650	1,241	19,295
6	Forney ISD	2,112	1,855	1,007	3,144	26,490
7	Dallas ISD	1,368	1,837	1,422	2,529	6,412
8	Princeton ISD	1,305	1,138	440	1,746	7,011
9	Rockwall ISD	1,233	1,134	715	1,555	9,135
10	Lewisville ISD	997	1,123	617	1,914	2,324
11	Royse City ISD	1,335	1,050	708	1,897	9,788
12	Crowley ISD	879	989	440	1,571	16,383
13	Melissa ISD	1,018	917	486	683	4,401
14	Mansfield ISD	1,061	910	629	1,180	6,774
15	Little Elm ISD	849	901	459	868	1,357
16	McKinney ISD	949	889	533	2,009	13,181
17	Crandall ISD	911	794	358	866	7,341
18	Fort Worth ISD	881	782	460	1,377	4,834
19	Wylie ISD	863	774	458	796	3,243
20	Waxahachie ISD	873	768	560	834	19,345

* Based on additional Templeton Demographics housing research

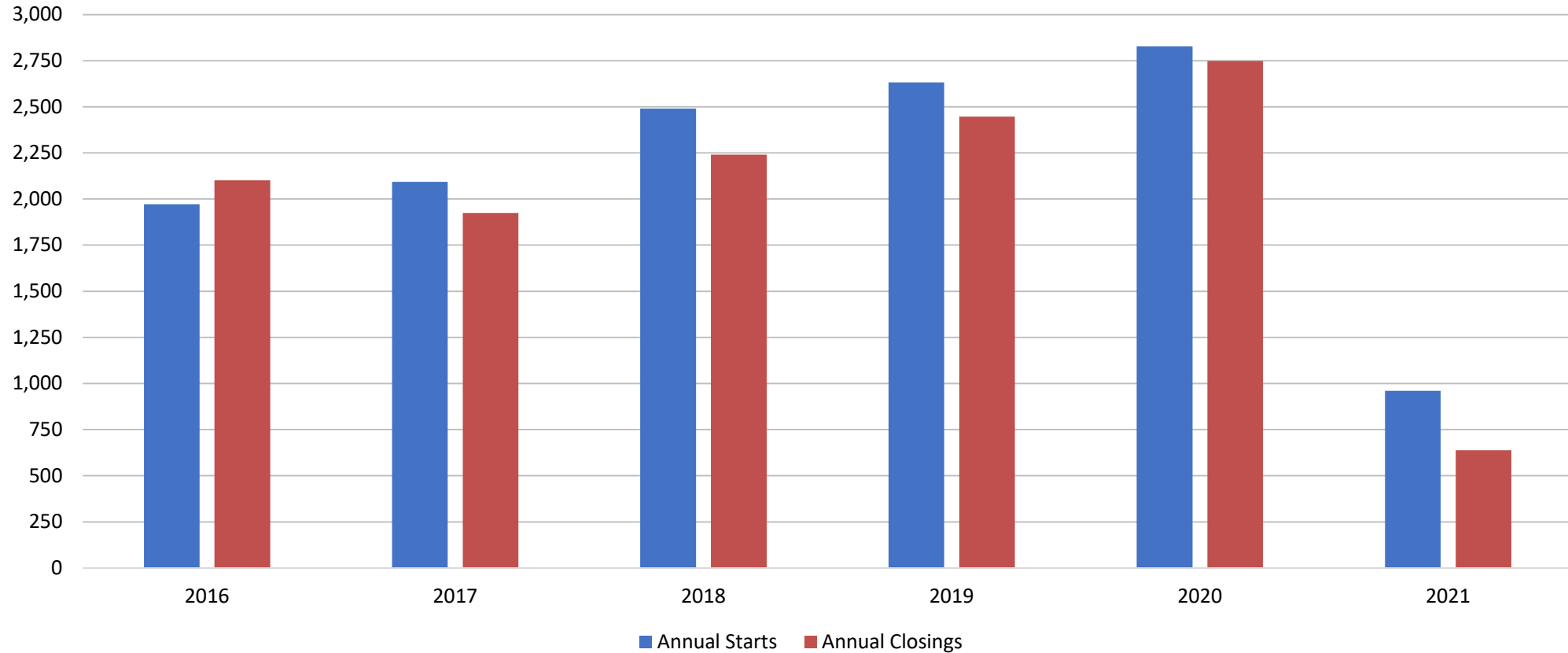
**Includes Age-Restricted subdivisions





Denton ISD New Housing Activity

Denton ISD



Starts	2016	2017	2018	2019	2020	2021
1Q	532	447	555	572	516	960
2Q	480	536	801	617	748	
3Q	543	608	563	686	684	
4Q	417	502	571	757	880	
Total	1,972	2,093	2,490	2,632	2,828	960

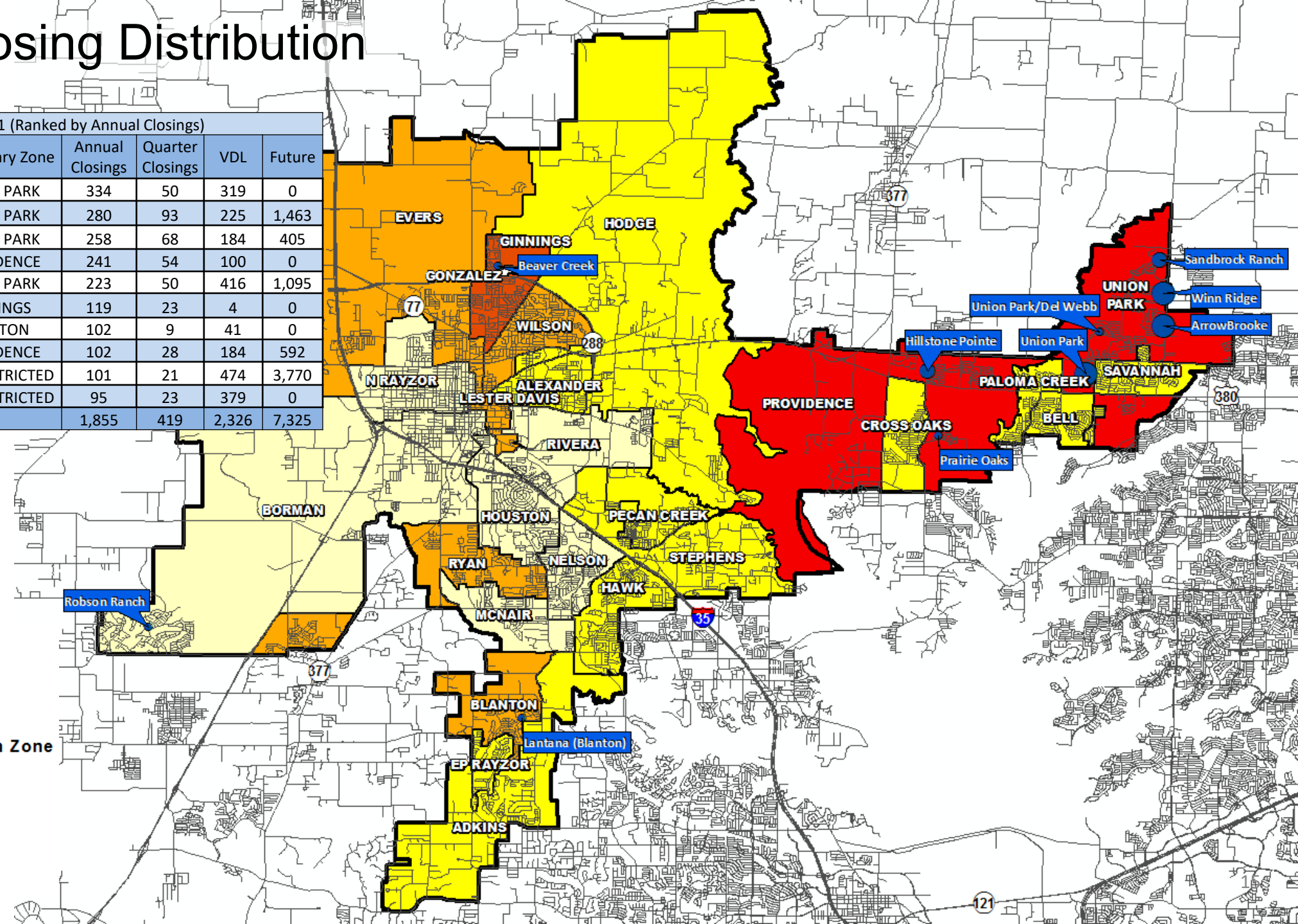
Closings	2016	2017	2018	2019	2020	2021
1Q	461	436	561	495	626	639
2Q	556	450	563	572	726	
3Q	544	559	561	678	756	
4Q	541	479	555	701	640	
Total	2,102	1,924	2,240	2,446	2,748	639





Annual Closing Distribution

Top 10 Subdivisions - 1Q21 (Ranked by Annual Closings)						
Rank	Subdivision	Elementary Zone	Annual Closings	Quarter Closings	VDL	Future
1	Winn Ridge	UNION PARK	334	50	319	0
2	Union Park	UNION PARK	280	93	225	1,463
3	ArrowBrooke	UNION PARK	258	68	184	405
4	Hillstone Pointe	PROVIDENCE	241	54	100	0
5	Sandbrock Ranch	UNION PARK	223	50	416	1,095
6	Beaver Creek	GINNINGS	119	23	4	0
7	Lantana (Blanton)	BLANTON	102	9	41	0
8	Prairie Oaks	PROVIDENCE	102	28	184	592
9	Robson Ranch	AGE-RESTRICTED	101	21	474	3,770
10	Union Park/Del Webb	AGE-RESTRICTED	95	23	379	0
TOTALS			1,855	419	2,326	7,325



Annual Closings by Sub

- < 150
- 150 - 250
- > 250

Annual Closings by Elem Zone

- 0
- 1 - 100
- 101 - 200
- 201 - 300
- > 300

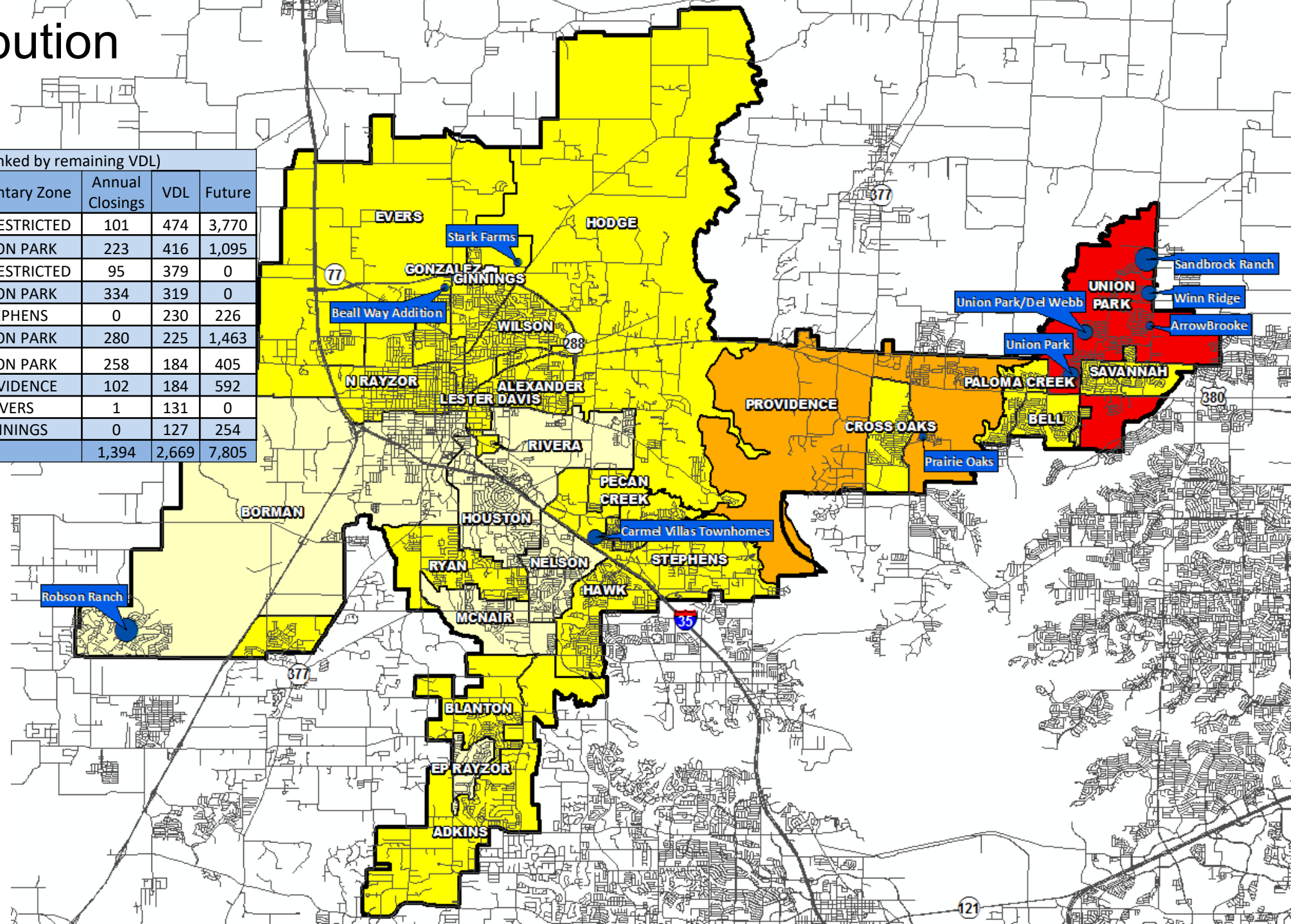




VDL Distribution

Top 10 Subdivisions - 1Q21 (Ranked by remaining VDL)

Rank	Subdivision	Elementary Zone	Annual Closings	VDL	Future
1	Robson Ranch	AGE-RESTRICTED	101	474	3,770
2	Sandbrock Ranch	UNION PARK	223	416	1,095
3	Union Park/Del Webb	AGE-RESTRICTED	95	379	0
4	Winn Ridge	UNION PARK	334	319	0
5	Carmel Villas Townhomes	STEPHENS	0	230	226
6	Union Park	UNION PARK	280	225	1,463
7	ArrowBrooke	UNION PARK	258	184	405
8	Prairie Oaks	PROVIDENCE	102	184	592
9	Beall Way Addition	EVERS	1	131	0
10	Stark Farms	GINNINGS	0	127	254
TOTALS			1,394	2,669	7,805



VDL by Sub

- > 200
- 200 - 400
- > 400

VDL by Elem Zone

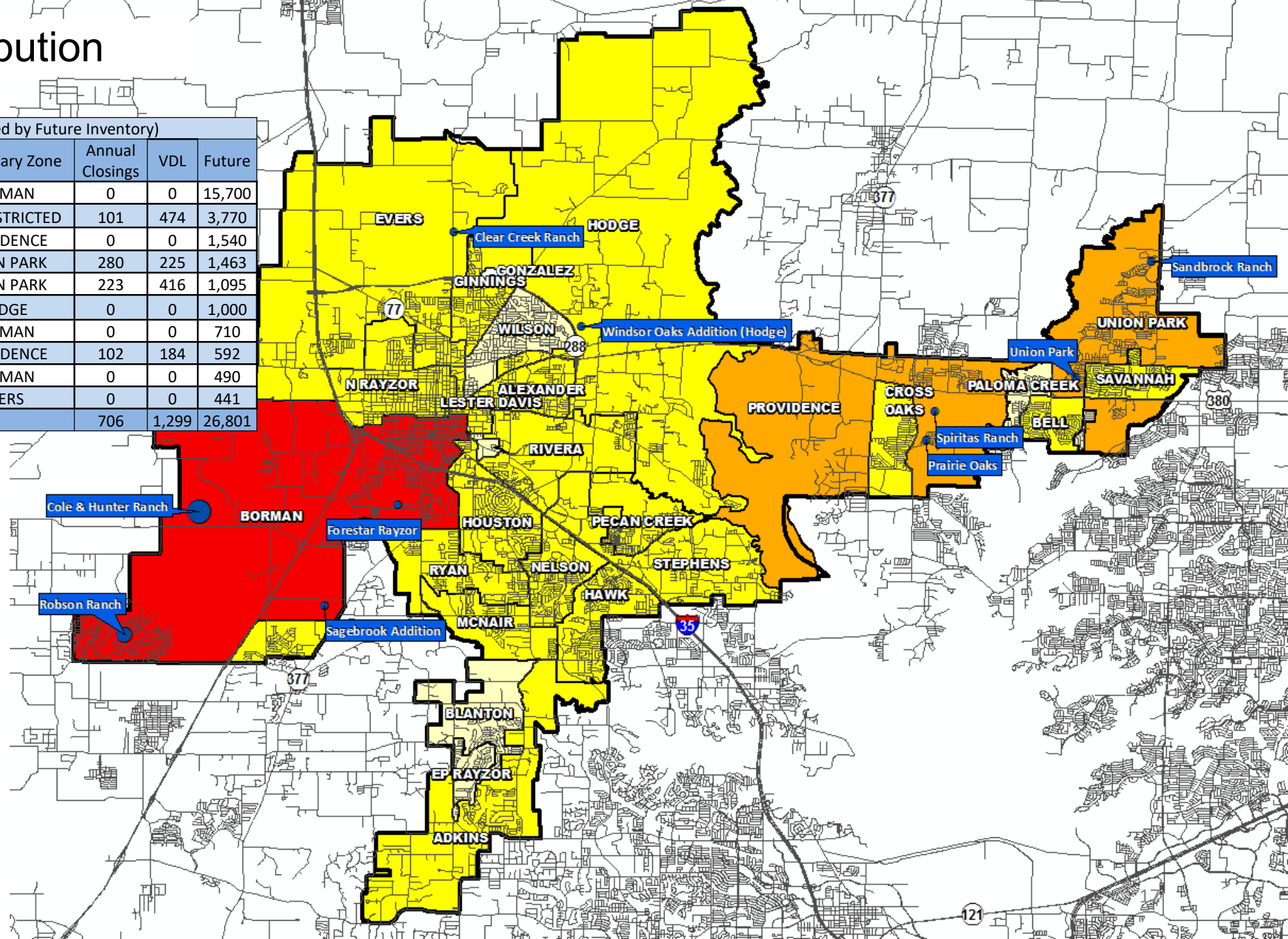
- 0
- 1 - 300
- 301 - 600
- > 600





Futures Distribution

Top 10 Subdivisions - 1Q21 (Ranked by Future Inventory)					
Rank	Subdivision	Elementary Zone	Annual Closings	VDL	Future
1	Cole & Hunter Ranch	BORMAN	0	0	15,700
2	Robson Ranch	AGE-RESTRICTED	101	474	3,770
3	Spiritas Ranch	PROVIDENCE	0	0	1,540
4	Union Park	UNION PARK	280	225	1,463
5	Sandbrock Ranch	UNION PARK	223	416	1,095
6	Windsor Oaks Addition (Hodge)	HODGE	0	0	1,000
7	Forestar Rayzor	BORMAN	0	0	710
8	Prairie Oaks	PROVIDENCE	102	184	592
9	Sagebrook Addition	BORMAN	0	0	490
10	Clear Creek Ranch	EVERS	0	0	441
TOTALS			706	1,299	26,801






District Housing Overview by Elementary Zone

Elementary	Annual Starts	Quarter Starts	Annual Closings	Quarter Closings	Under Construction	Inventory	Vacant Dev. Lots	Futures
ADKINS	9	3	28	1	6	6	54	84
ALEXANDER	19	4	19	11	7	7	1	537
BELL	90	22	92	11	52	59	18	53
BLANTON	54	5	102	9	7	14	43	0
BORMAN	0	0	0	0	0	0	0	17,360
CROSS OAKS	91	33	58	22	57	62	67	252
EP RAYZOR	1	0	2	0	1	1	0	0
EVERS	133	66	105	12	93	109	249	1,008
GINNINGS	267	111	216	53	98	118	164	651
HAWK	0	0	5	0	0	0	80	30
HODGE	9	3	11	0	9	9	14	2,416
HOUSTON	0	0	0	0	0	0	0	246
MCNAIR	0	0	0	0	0	0	0	339
N RAYZOR	1	0	0	0	0	1	5	45
NELSON	0	0	0	0	0	0	0	4
PALOMA CREEK	83	22	64	17	40	53	43	0
PECAN CREEK	59	4	81	11	8	11	8	46
PROVIDENCE	393	62	361	85	154	197	335	3,063
RIVERA	0	0	0	0	0	0	0	346
RYAN	156	33	132	30	55	58	249	331
SAVANNAH	30	5	63	5	12	17	51	16
STEPHENS	55	15	63	15	32	36	280	327
UNION PARK	1,568	479	1,129	268	801	938	1,241	3,876
WILSON	90	11	117	31	17	21	13	0
GRAND TOTAL*	3,108	878	2,648	581	1,449	1,717	2,915	31,030

*Does NOT include Age-Restricted subdivisions

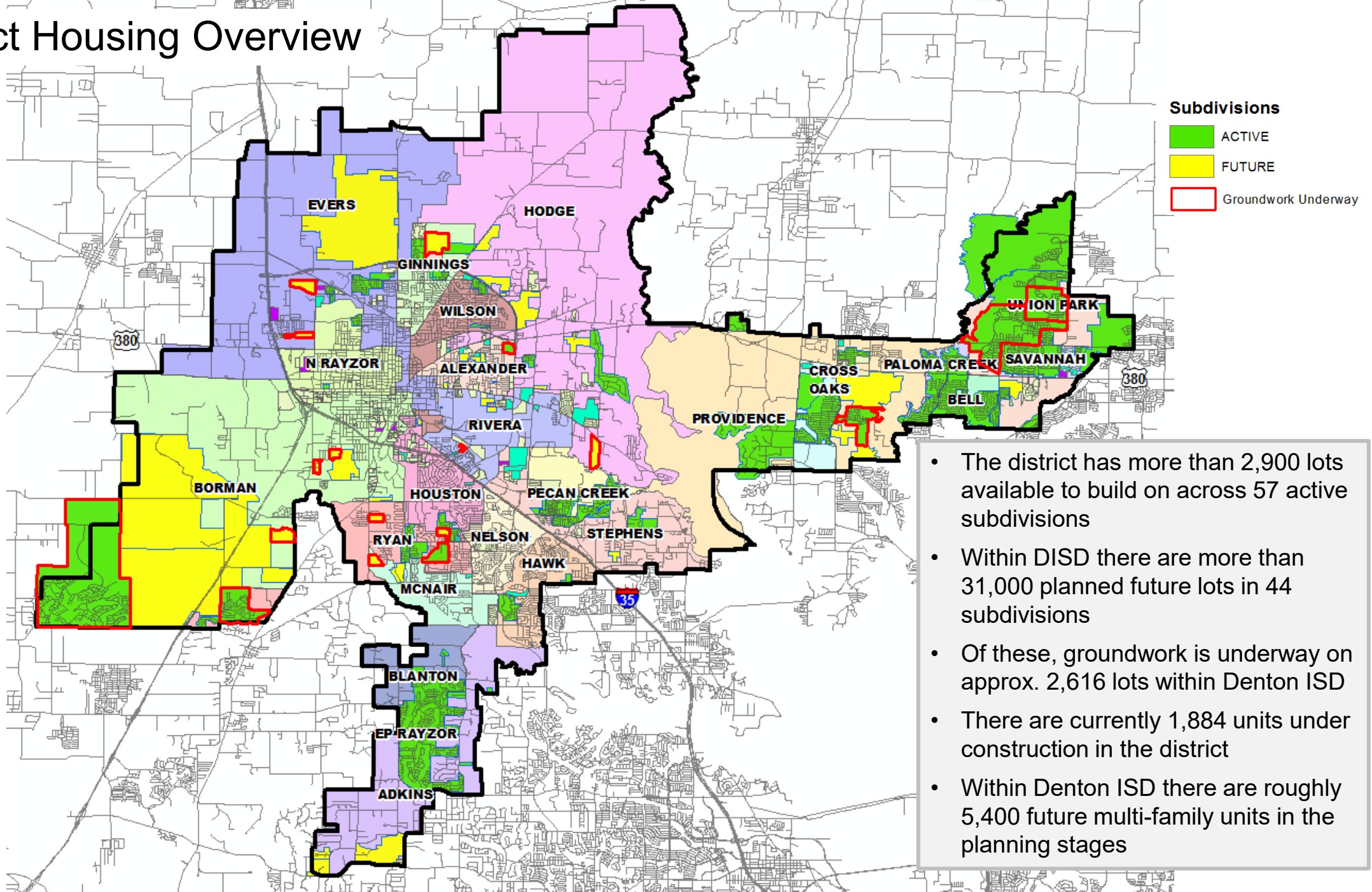
 Highest activity in the category

 Second highest activity in the category

 Third highest activity in the category

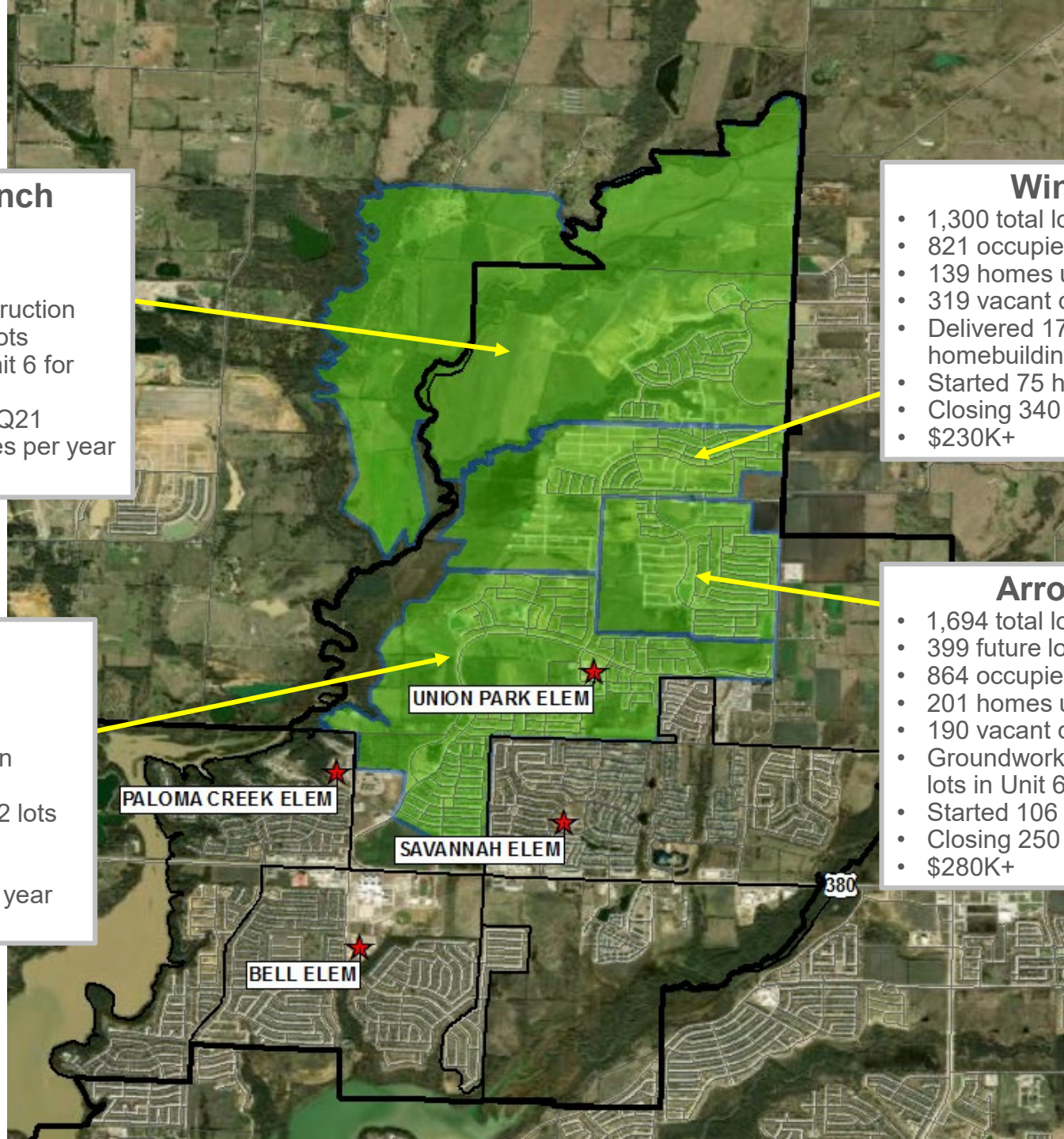


District Housing Overview





Residential Activity



Sandbrock Ranch

- 2,300 total lots
- 1,095 future lots
- 568 occupied lots
- 189 homes under construction
- 416 vacant developed lots
- Delivered 230 lots in Unit 6 for homebuilding in 1Q21
- Started 119 homes in 1Q21
- Closing 230 - 240 homes per year
- \$310K+

Winn Ridge

- 1,300 total lots
- 821 occupied lots
- 139 homes under construction
- 319 vacant developed lots
- Delivered 174 lots in Unit 2 for homebuilding in 1Q21
- Started 75 homes in 1Q21
- Closing 340 - 350 homes per year
- \$230K+

ArrowBrooke

- 1,694 total lots
- 399 future lots
- 864 occupied lots
- 201 homes under construction
- 190 vacant developed lots
- Groundwork underway on 215 lots in Unit 6
- Started 106 homes in 1Q21
- Closing 250 - 260 homes per year
- \$280K+

Union Park

- 2,944 total lots
- 1,463 future lots
- 963 occupied lots
- 252 homes under construction
- 225 vacant developed lots
- Groundwork underway on 182 lots in Unit 5
- Started 174 homes in 1Q21
- Closing 260 - 270 homes per year
- \$250K+

PALOMA CREEK ELEM

UNION PARK ELEM

SAVANNAH ELEM

BELL ELEM

380



TEA Transfer Report

Transfers In From	2015/16	2016/17	2017/18	2018/19	2019/20	2020/21	5 Year Change
Argyle ISD	11	8	11	11	15	14	+3
Aubrey ISD	3	11	26	36	33	46	+43
Krum ISD	15	20	19	17	18	27	+12
Lake Dallas ISD	22	20	17	20	20	42	+20
Little Elm ISD	3	3	14	18	22	32	+29
Northwest ISD	6	3	3	3	12	17	+11
Ponder ISD	3	3	3	3	17	10	+7
Sanger ISD	11	10	21	13	17	33	+22
Total Transfers In*	105	120	166	176	183	288	+183

Transfers Out To	2015/16	2016/17	2017/18	2018/19	2019/20	2020/21	5 Year Change
Argyle ISD	99	78	87	83	81	82	-17
Aubrey ISD	98	93	94	102	125	146	+48
Brazos River Charter School	5	3	3	3	33	22	+17
Carrollton-Farmers Branch ISD	3	10	3	23	28	33	+30
Frisco ISD	79	75	90	110	123	144	+65
Hallsville ISD	0	0	0	24	55	81	+81
Krum ISD	27	25	25	23	29	19	-8
Lake Dallas ISD	198	226	257	301	322	339	+141
Leadership Prep School	11	25	36	57	93	116	+105
Lewisville ISD	117	133	139	195	252	308	+191
Little Elm ISD	43	51	61	59	70	72	+29
North Texas Collegiate Academy	129	134	214	225	263	212	+83
Prosper ISD	41	50	42	45	55	65	+24
Sanger ISD	16	19	23	26	17	26	+10
Texas College Prep Academy	549	599	672	783	914	1,044	+495
Total Transfers Out*	1,612	1,727	1,974	2,293	2,718	2,998	+1,386

*Totals include additional districts per TEA rounding rules





Ten Year Forecast by Grade Level

Year (Oct.)	EE	PK	K	1st	2nd	3rd	4th	5th	6th	7th	8th	9th	10th	11th	12th	Total	Total Growth	Percent
2016/17	114	1,016	2,066	2,044	2,194	2,181	2,231	2,219	2,160	2,202	2,175	2,293	2,084	1,967	1,685	28,631		
2017/18	98	1,048	2,081	2,100	2,119	2,230	2,251	2,300	2,264	2,232	2,205	2,346	2,245	2,018	1,887	29,424	793	2.8%
2018/19	78	1,082	2,177	2,117	2,182	2,136	2,274	2,303	2,335	2,328	2,312	2,371	2,313	2,173	1,988	30,169	745	2.5%
2019/20	90	1,099	2,157	2,279	2,155	2,222	2,179	2,323	2,333	2,409	2,403	2,543	2,385	2,220	2,111	30,908	739	2.4%
2020/21	92	978	2,062	2,115	2,213	2,092	2,198	2,120	2,273	2,319	2,402	2,455	2,402	2,324	2,222	30,267	-641	-2.1%
2021/22	92	1,170	2,263	2,205	2,200	2,309	2,162	2,293	2,195	2,359	2,388	2,617	2,450	2,278	2,250	31,231	964	3.2%
2022/23	92	1,211	2,343	2,369	2,276	2,257	2,380	2,249	2,332	2,270	2,443	2,603	2,619	2,352	2,234	32,030	798	2.6%
2023/24	92	1,261	2,437	2,415	2,443	2,337	2,338	2,479	2,302	2,403	2,338	2,649	2,599	2,515	2,304	32,912	882	2.8%
2024/25	92	1,315	2,525	2,547	2,486	2,505	2,415	2,434	2,519	2,370	2,487	2,526	2,647	2,497	2,461	33,826	915	2.8%
2025/26	92	1,353	2,611	2,628	2,624	2,566	2,595	2,505	2,484	2,591	2,447	2,700	2,530	2,543	2,449	34,718	892	2.6%
2026/27	92	1,408	2,677	2,710	2,712	2,696	2,645	2,665	2,546	2,558	2,664	2,660	2,710	2,431	2,491	35,665	947	2.7%
2027/28	92	1,444	2,760	2,773	2,763	2,777	2,789	2,720	2,704	2,627	2,636	2,882	2,666	2,603	2,384	36,620	955	2.7%
2028/29	92	1,469	2,763	2,858	2,855	2,836	2,865	2,867	2,757	2,779	2,701	2,857	2,885	2,561	2,551	37,696	1,077	2.9%
2029/30	92	1,480	2,797	2,858	2,939	2,929	2,928	2,940	2,895	2,809	2,862	2,932	2,874	2,771	2,507	38,613	917	2.4%
2030/31	92	1,492	2,806	2,884	2,929	3,005	3,015	2,997	2,974	2,969	2,892	3,108	2,950	2,764	2,714	39,591	978	2.5%

Yellow box = largest grade per year
 Green box = second largest grade per year



Ten Year Forecast by Elementary Campus

Campus Name	HISTORY		Fall	ENROLLMENT PROJECTIONS									
	Capacity	2019/20	2020/21	2021/22	2022/23	2023/24	2024/25	2025/26	2026/27	2027/28	2027/29	2029/30	2030/31
Alexander Elementary School	740	596	580	612	607	622	633	647	675	689	693	698	701
Adkins Elementary School	740	475	435	440	439	440	454	435	448	455	461	465	461
Bell Elementary School	740	678	653	692	695	695	699	682	684	697	699	692	691
Blanton Elementary School	740	481	479	454	468	460	456	457	469	475	484	486	484
Borman Elementary School	740	444	434	434	438	444	464	510	532	562	594	630	683
Cross Oaks Elementary School	740	678	668	712	729	742	779	808	841	846	844	835	827
E P Rayzor Elementary School	740	364	311	320	325	325	314	318	322	330	337	338	335
Evers Park Elementary School	740	594	543	552	582	633	667	734	801	854	899	931	949
Ginnings Elementary School	740	560	583	608	627	649	666	682	699	712	723	720	713
Hodge Elementary School	740	684	618	683	773	867	936	1,035	1,116	1,182	1,231	1,253	1,260
Sam Houston Elementary School	740	593	530	543	556	557	556	579	579	578	577	579	583
Nelson Elementary School	740	605	577	558	544	571	561	584	586	592	599	599	601
McNair Elementary School	740	565	534	528	482	467	472	473	503	523	546	567	591
Hawk Elementary School	740	675	568	581	582	600	586	575	609	623	630	628	631
Olive Stephens Elementary School	740	386	379	423	452	498	531	565	602	631	645	657	667
Paloma Creek Elementary School	740	686	648	663	673	705	720	720	721	714	706	701	696
Pecan Creek Elementary School	740	678	643	645	632	632	629	642	651	658	664	669	673
Providence Elementary School	740	565	554	608	649	696	774	808	871	914	976	1,060	1,134
Newton Rayzor Elementary School	740	670	614	649	665	693	714	748	784	795	808	804	793
Rivera Elementary School	740	563	540	558	560	558	568	605	625	638	651	664	666
Savannah Elementary School	740	711	641	640	640	657	656	656	686	715	725	736	742
Ryan Elementary School	740	555	544	570	581	615	621	637	620	616	614	610	605
Union Park Elementary School	740	477	727	988	1,220	1,415	1,575	1,759	1,827	1,938	2,091	2,217	2,294
Wilson Elementary School	740	618	567	621	610	591	585	593	606	614	620	632	638
Ann Windle School For Young Child	740	299	252	307	325	336	353	363	375	385	397	397	402
Gonzalez School For Young Child	740	301	248	304	322	333	350	360	372	382	394	394	399
ELEMENTARY TOTALS	19,240	14,501	13,870	14,694	15,177	15,802	16,319	16,974	17,605	18,118	18,605	18,963	19,220
Elementary Absolute Change		153	-631	824	482	625	518	655	631	513	488	358	257
Elementary Percent Change		1.07%	-4.35%	5.94%	3.28%	4.12%	3.28%	4.01%	3.72%	2.91%	2.69%	1.92%	1.35%

Yellow box = over capacity





Ten Year Forecast by Secondary Campus

Campus Name	HISTORY		Fall	ENROLLMENT PROJECTIONS									
	Capacity	2019/20	2020/21	2021/22	2022/23	2023/24	2024/25	2025/26	2026/27	2027/28	2027/29	2029/30	2030/31
Calhoun Middle School	1,268	720	664	692	727	718	760	741	751	749	813	886	942
McMath Middle School	1,181	821	804	814	799	789	817	809	837	835	885	894	899
Navo Middle School	1,181	987	1,025	1,006	1,027	1,045	1,137	1,188	1,291	1,340	1,366	1,397	1,434
Crownover Middle School	1,181	917	874	839	853	765	788	764	774	743	744	781	796
Strickland Middle School	1,334	944	901	892	904	933	1,009	1,043	1,058	1,092	1,157	1,205	1,261
Harpool Middle School	1,181	929	875	875	811	813	782	812	775	758	719	745	771
Rodriguez Middle School	1,323	905	961	986	1,089	1,167	1,227	1,303	1,403	1,547	1,595	1,652	1,684
Bette Myers Middle School	1,323	900	880	828	825	803	846	852	869	893	948	996	1,038
MIDDLE SCHOOL TOTALS	9,972	7,123	6,984	6,932	7,035	7,033	7,366	7,512	7,758	7,957	8,227	8,556	8,825
Middle School Absolute Change		171	-139	-52	103	-2	333	146	246	199	270	329	269
Middle School Percent Change		2.46%	-1.95%	-0.74%	1.49%	-0.03%	4.73%	1.98%	3.27%	2.57%	3.39%	4.00%	3.14%
Braswell High School	2,398	2,321	2,446	2,686	2,903	3,045	3,153	3,278	3,387	3,545	3,810	4,018	4,288
Denton High School	2,460	2,025	2,023	1,942	1,973	2,037	2,055	2,105	2,115	2,176	2,169	2,202	2,276
Fred Moore High School		67	68	68	68	68	68	68	68	68	68	68	68
John Guyer High School	3,200	2,626	2,621	2,598	2,528	2,500	2,441	2,391	2,297	2,275	2,267	2,196	2,204
Ryan High School	2,340	2,131	2,197	2,253	2,288	2,369	2,366	2,332	2,377	2,423	2,492	2,552	2,652
HIGH SCHOOL TOTALS	10,398	9,170	9,355	9,547	9,760	10,019	10,083	10,174	10,244	10,487	10,806	11,036	11,488
High School Absolute Change		426	185	192	213	259	64	91	70	243	319	230	452
High School Percent Change		4.87%	2.02%	2.05%	2.23%	2.65%	0.64%	0.90%	0.69%	2.37%	3.04%	2.13%	4.10%
Denton J J A E P		4	8	8	8	8	8	8	8	8	8	8	8
Juvenile Detention CTR		49	43	43	43	43	43	43	43	43	43	43	43
Lester Davis School		61	7	7	7	7	7	7	7	7	7	7	7
ALTERNATIVE SCHOOL TOTALS		114	58	58	58	58	58	58	58	58	58	58	58
DISTRICT TOTALS	39,610	30,908	30,267	31,231	32,030	32,912	33,826	34,718	35,665	36,620	37,696	38,613	39,591
District Absolute Change		739	-641	964	798	882	915	892	947	955	1,077	917	978
District Percent Change		2.4%	-2.1%	3.2%	2.6%	2.8%	2.8%	2.6%	2.7%	2.7%	2.9%	2.4%	2.5%

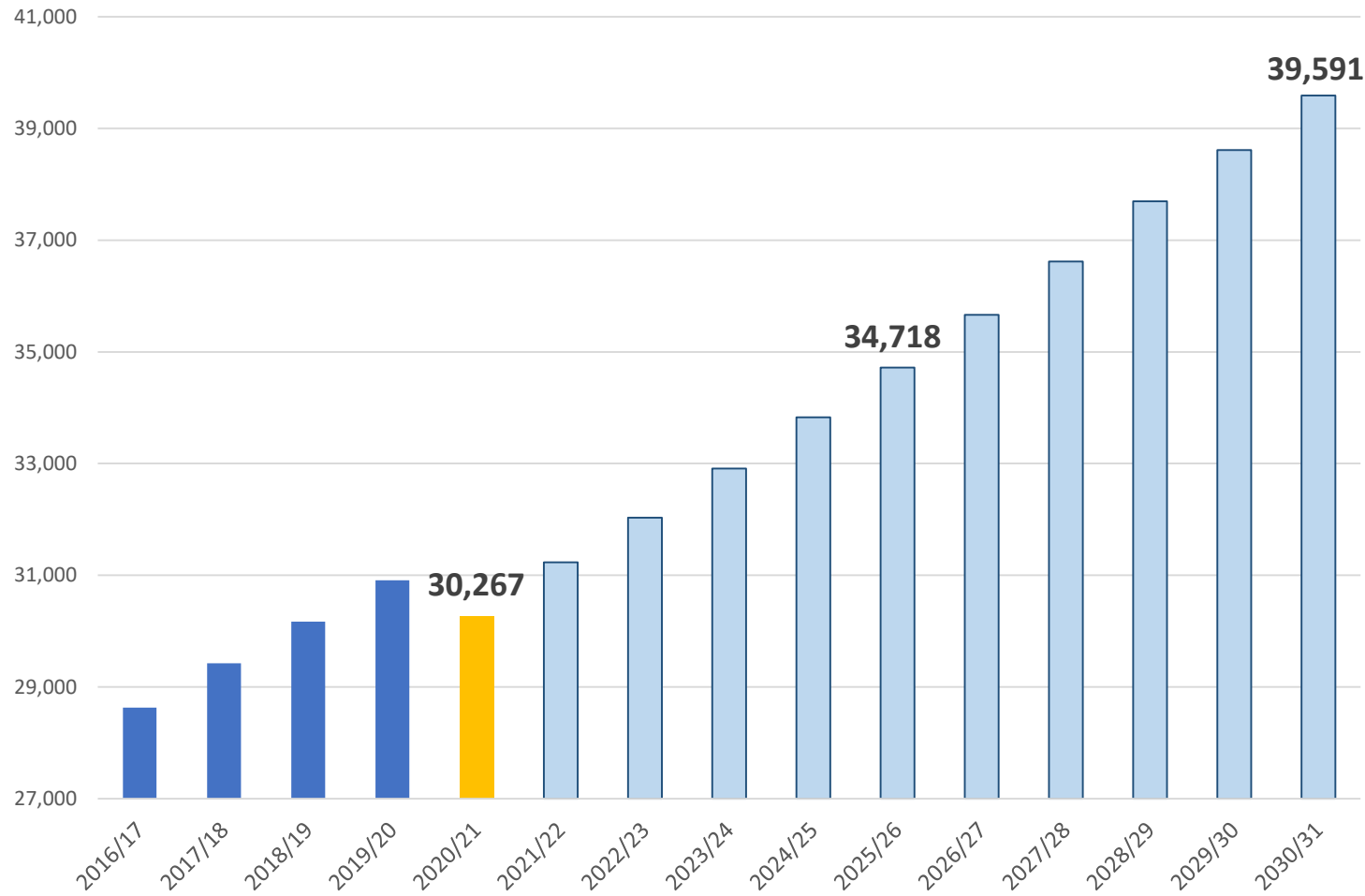
Yellow box = over capacity



Key Takeaways



Enrollment Projection



- Denton ISD has experienced enrollment growth of over 300 students since Fall 2020
- In the last 12 months new home starts in DISD increased by more than 85%
- The district has more than 2,900 lots available to build on and approx. 31,000 planned future lots
- Largest amount of new home starts & closings occurring within Union Park Elementary Zone
- Denton ISD is expected to enroll more than 34,700 students by 2025-26 and nearly 39,600 students by 2030-31