

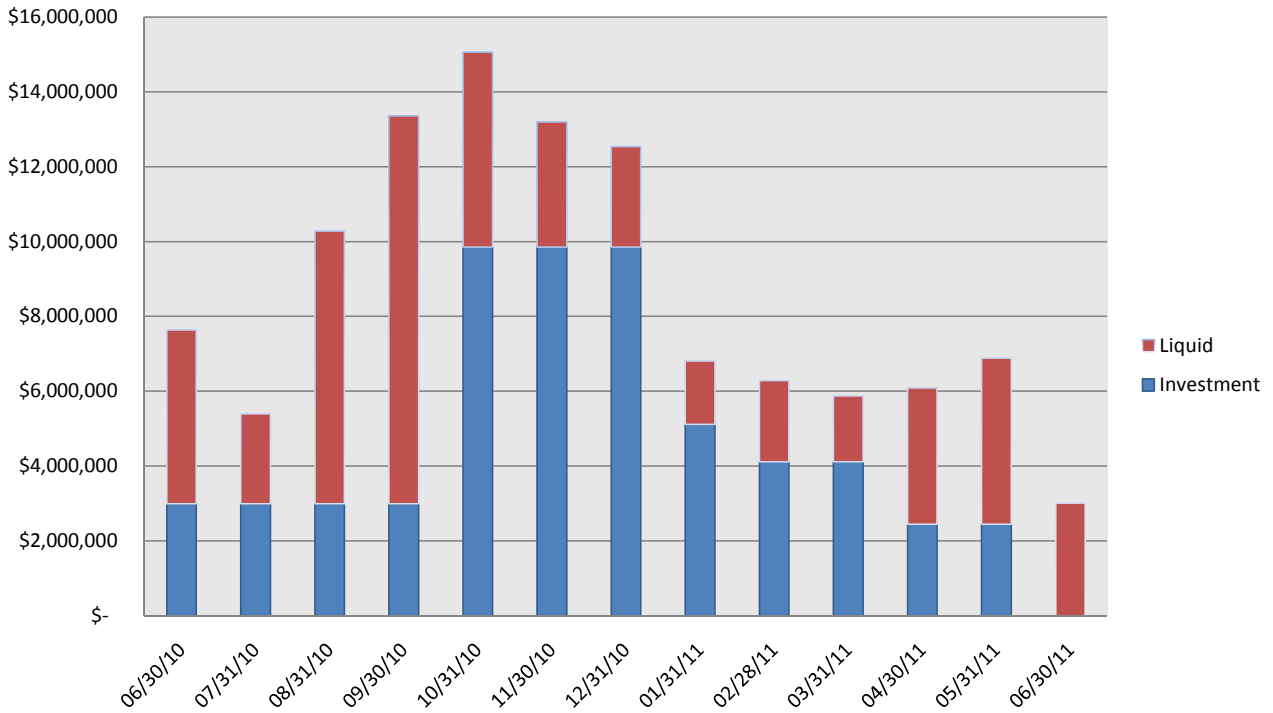
ISD#877 Buffalo-Hanover-Montrose Schools Investment Portfolio Summary as of 10/31/2010							
Investment Type	Investment Total	Total all funds inc. Investments	% of Portfolio	Policy % Limit	Compliance	Max cash balance for Compliance	Balance Remaining to Compliance Max
FDIC Insured CD	\$ 6,396,000.00	\$ 15,067,355.66	42.4%	75.00%	Yes	\$ 11,300,516.75	\$ 4,904,516.75
Commerical Paper	\$ 3,462,801.55	\$ 15,067,355.66	23.0%	33.33%	Yes	\$ 5,022,451.89	\$ 1,559,650.34
Daily Liquid Accounts	\$ 5,208,554.11	\$ 15,067,355.66	34.6%	100.00%	Yes	\$ 15,067,355.66	\$ 9,858,801.55
Total	\$ 15,067,355.66						
Fixed Rate Investment Portfolio by Investment Advisor		Investment Total					
MSDLAF	\$ 5,725,952.33						
SMITH BARNEY	\$ 962,849.22						
MNTRUST	\$ 3,170,000.00						
Total	\$ 9,858,801.55						

ISD#877 Buffalo-Hanover-Montrose Schools FDIC Insured CDs as of 10/31/2010								
Bank	Investment Type	Bank #	Amount Invested	Net Rate	Invest date	Maturity Date	Interest Earned	Maturity Amt.
Bank of Israel, NY, NY	FDIC Insured CD	19977	\$ 249,000.00	0.20%	10/21/2010	1/21/2011	\$ 125.52	\$ 249,125.52
REPUBLIC BANK OF CHICAGO IL	FDIC Insured CD	19333	\$ 249,700.00	0.30%	10/13/10	1/27/2011	\$ 217.55	\$ 249,917.55
THE FIRST, NA / FIRST NB OF DAMARISCOT ME	FDIC Insured CD	28994	\$ 249,800.00	0.14%	10/13/10	1/27/2011	\$ 103.01	\$ 249,903.01
FINANCIAL FEDERAL SAVINGS BANK TN	FDIC Insured CD	31840	\$ 249,800.00	0.15%	10/13/10	1/27/2011	\$ 108.82	\$ 249,908.82
M & T BANK, NA IL	FDIC Insured CD	34059	\$ 249,800.00	0.15%	10/13/10	1/27/2011	\$ 111.00	\$ 249,911.00
MERCANTILE BANK OF MICHIGAN	FDIC Insured CD	34598	\$ 249,800.00	0.14%	10/13/10	1/27/2011	\$ 103.38	\$ 249,903.38
Tomatobank, N.A., Diamond Bar, CA-	FDIC Insured CD	35474	\$ 248,000.00	0.25%	10/8/2010	1/27/2011	\$ 188.55	\$ 248,188.55
Banco Santander Puerto Rico	FDIC Insured CD	20828	\$ 249,000.00	0.20%	10/13/2010	2/11/2011	\$ 165.09	\$ 249,165.09
Bar Harbor Bank and Trust, ME	FDIC Insured CD	11971	\$ 249,500.00	0.30%	10/7/2010	2/22/2011	\$ 285.15	\$ 249,785.15
City National Bank CA	FDIC Insured CD	17281	\$ 249,700.00	0.25%	10/7/2010	2/22/2011	\$ 238.15	\$ 249,938.15
TCF National Bank, MI	FDIC Insured CD	28330	\$ 249,700.00	0.25%	10/7/2010	2/22/2011	\$ 240.74	\$ 249,940.74
COLE TAYLOR BANK (N)	FDIC Insured CD	22599	\$ 249,400.00	0.40%	10/6/2010	4/22/2011	\$ 541.16	\$ 249,941.16
REPUBLIC FIRST BANK PA	FDIC Insured CD	27332	\$ 249,300.00	0.45%	10/6/2010	4/22/2011	\$ 608.57	\$ 249,908.57
FIRST COMMONS BANK NA	FDIC Insured CD	58923	\$ 176,300.00	0.35%	10/6/2010	4/22/2011	\$ 334.73	\$ 176,634.73
Bank Of The Ozarks, Little Rock, AR	FDIC Insured CD	110	\$ 248,000.00	0.35%	10/5/2010	4/28/2011	\$ 487.51	\$ 248,487.51
Cfg Community Bank, Baltimore, MD	FDIC Insured CD	34294	\$ 248,000.00	0.35%	10/5/2010	4/28/2011	\$ 487.51	\$ 248,487.51
Landmark Community Bank, Collierville, TN	FDIC Insured CD	34982	\$ 248,000.00	0.40%	10/5/2010	4/28/2011	\$ 557.15	\$ 248,557.15
Franklin Synergy Bank, Franklin, TN	FDIC Insured CD	58714	\$ 248,000.00	0.35%	10/5/2010	4/28/2011	\$ 487.51	\$ 248,487.51
Orrstown Bank PA	FDIC Insured CD	713	\$ 248,000.00	0.50%	10/4/2010	6/15/2011	\$ 862.90	\$ 248,862.90
Bank of Versailles, Versailles MO	FDIC Insured CD	1086	\$ 248,000.00	0.35%	10/4/2010	6/15/2011	\$ 604.03	\$ 248,604.03
Sterling National Bank, NY, NY	FDIC Insured CD	7220	\$ 248,000.00	0.40%	10/4/2010	6/15/2011	\$ 690.32	\$ 248,690.32
State Bank of India (CA)	FDIC Insured CD	23998	\$ 248,000.00	0.35%	10/4/2010	6/15/2011	\$ 604.03	\$ 248,604.03
Private Bank, MI	FDIC Insured CD	33306	\$ 248,800.00	0.40%	10/4/2010	6/15/2011	\$ 692.55	\$ 249,492.55
Investorsbank, Waukesha, WI	FDIC Insured CD	34347	\$ 248,000.00	0.40%	10/4/2010	6/15/2011	\$ 690.32	\$ 248,690.32
Private Bank of the Peninsula, CA	FDIC Insured CD	57510	\$ 248,400.00	0.50%	10/4/2010	6/15/2011	\$ 866.02	\$ 249,266.02
OnewestBank FSB Pasadena, CA	FDIC Insured CD	58978	\$ 248,000.00	0.40%	10/4/2010	6/15/2011	\$ 690.32	\$ 248,690.32
Total			\$ 6,396,000.00				\$ 11,091.60	\$ 6,407,091.60

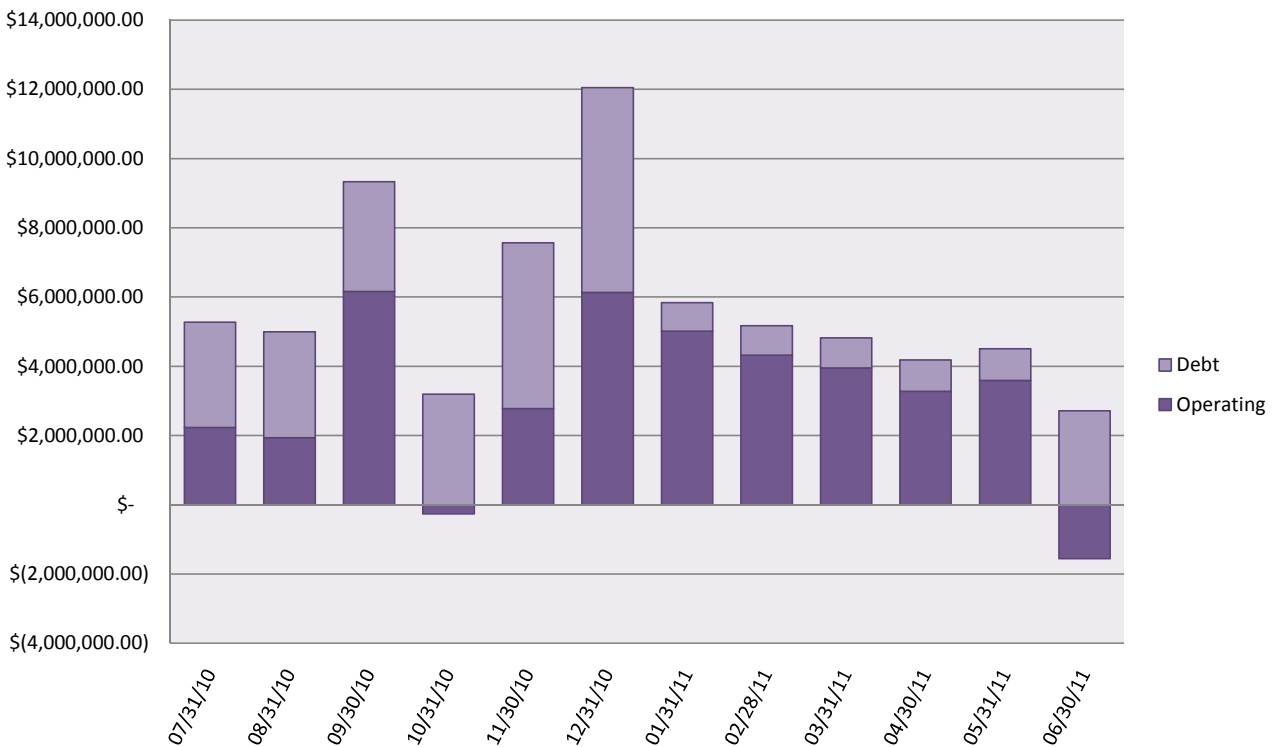
ISD#877 Buffalo-Hanover-Montrose Schools Commercial Paper Portfolio as of 10/31/2010							
Citigroup	Commercial Paper	\$ 464,849.22	0.35%	10/4/2010	6/15/2011	\$ 1,150.78	\$ 466,000.00
GE Capital - Debt 01/11	Commercial Paper	\$ 2,997,952.33	0.65%	6/1/2010	1/27/2011	\$ 13,047.67	\$ 3,011,000.00
Total		\$ 3,462,801.55				\$ 14,198.45	\$ 3,477,000.00

Buffalo-Hanover-Montrose Schools #877

2010-11 Projected Cash and Investment Balances



2010-11 Projected Minimum Monthly Balances



Buffalo-Hanover-Montrose Schools #877
As of September 30, 2010

