

The background features a large, light purple watermark of the Geneva CUSD 304 logo. The logo consists of a shield with a large 'G' in the center, a banner across the middle with the word 'GENEVA', and the text 'CUSD 304' below the banner. The shield is flanked by laurel branches at the bottom. Above the shield, the motto 'ACHIEVE EXCELLENCE & EMPOWER TO SUCCEED' is written in a semi-circle.

Superintendent's Report

8/26/24

GENEVA

CUSD 304

MISSION: POSSIBLE
MISSION: POSSIBLE
GENEVA 304



➔ Achieve Excellence and Empower Students to Succeed

Educate and prepare students with the **KNOWLEDGE, SKILLS,** and **PERSONAL QUALITIES** to be productive citizens.



PREPARATION

We are ready for the future in a diverse world.

EXCELLENCE

We perform at a high level.

EMPOWERMENT

We are intellectually engaged in valuable work.

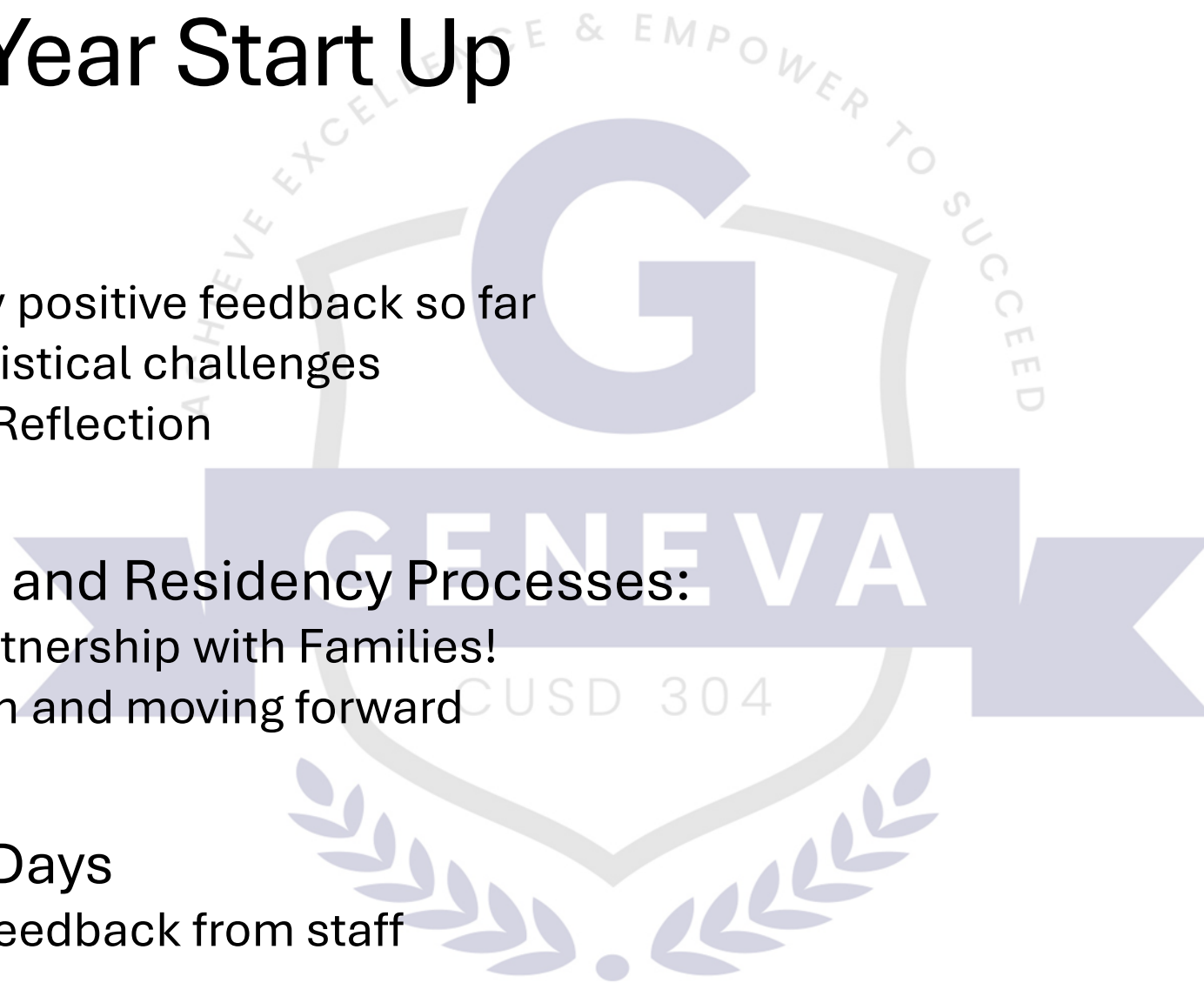
School Board Governance Award!!



- 40 school boards recognized across the state
 - (out of approximately 850!)
- Modeling effective practices
- Focus on good governance and leadership skills
- Engagement with the community
- Growing and Developing Professionally

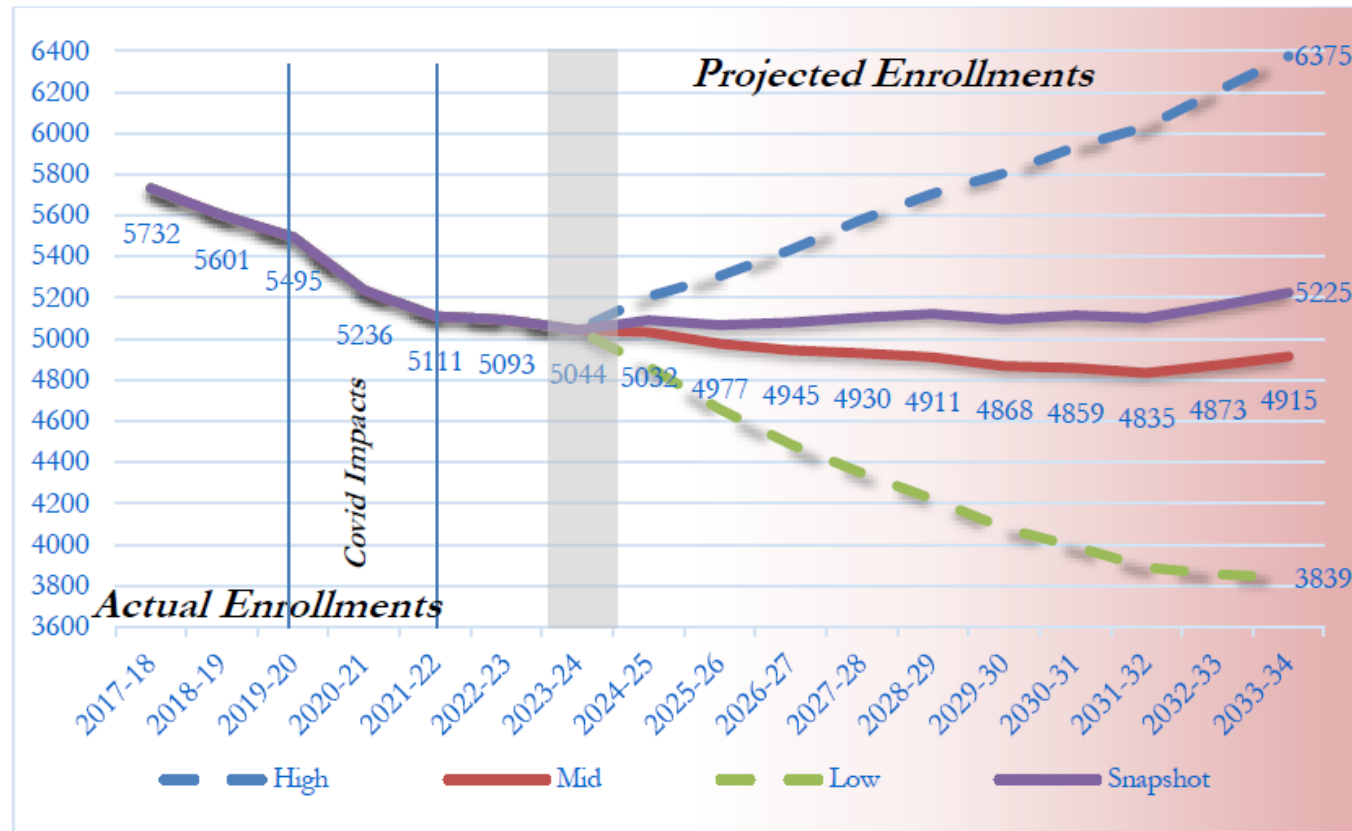
School Year Start Up

- Later Start:
 - Generally positive feedback so far
 - Some logistical challenges
 - Ongoing Reflection
- Enrollment and Residency Processes:
 - Great Partnership with Families!
 - Reflection and moving forward
- 3 Institute Days
 - Positive feedback from staff

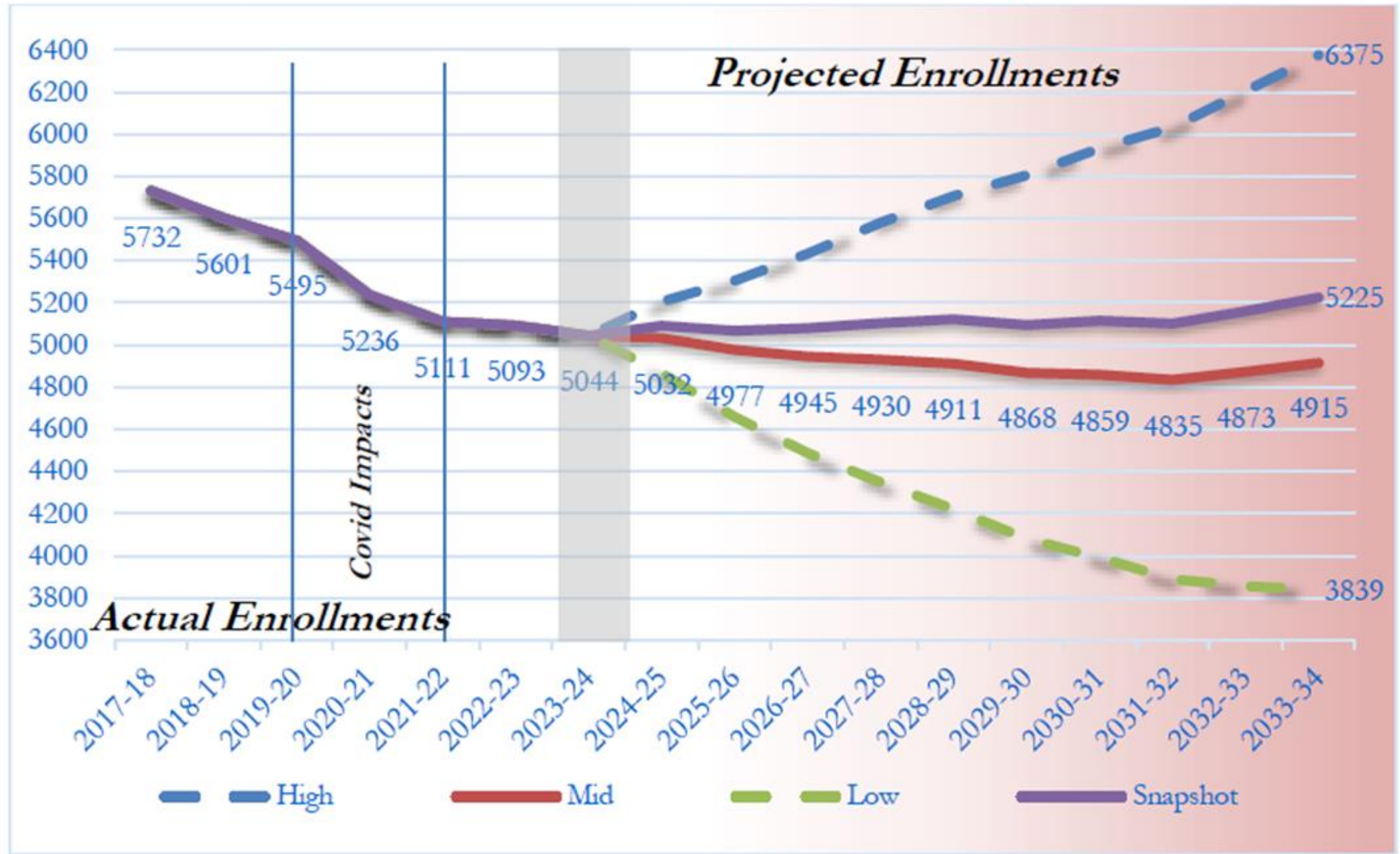


Demographic Study

Graph 1: Total K-12 School District Enrollments and Projections



Graph 1: Total K-12 School District Enrollments and Projections

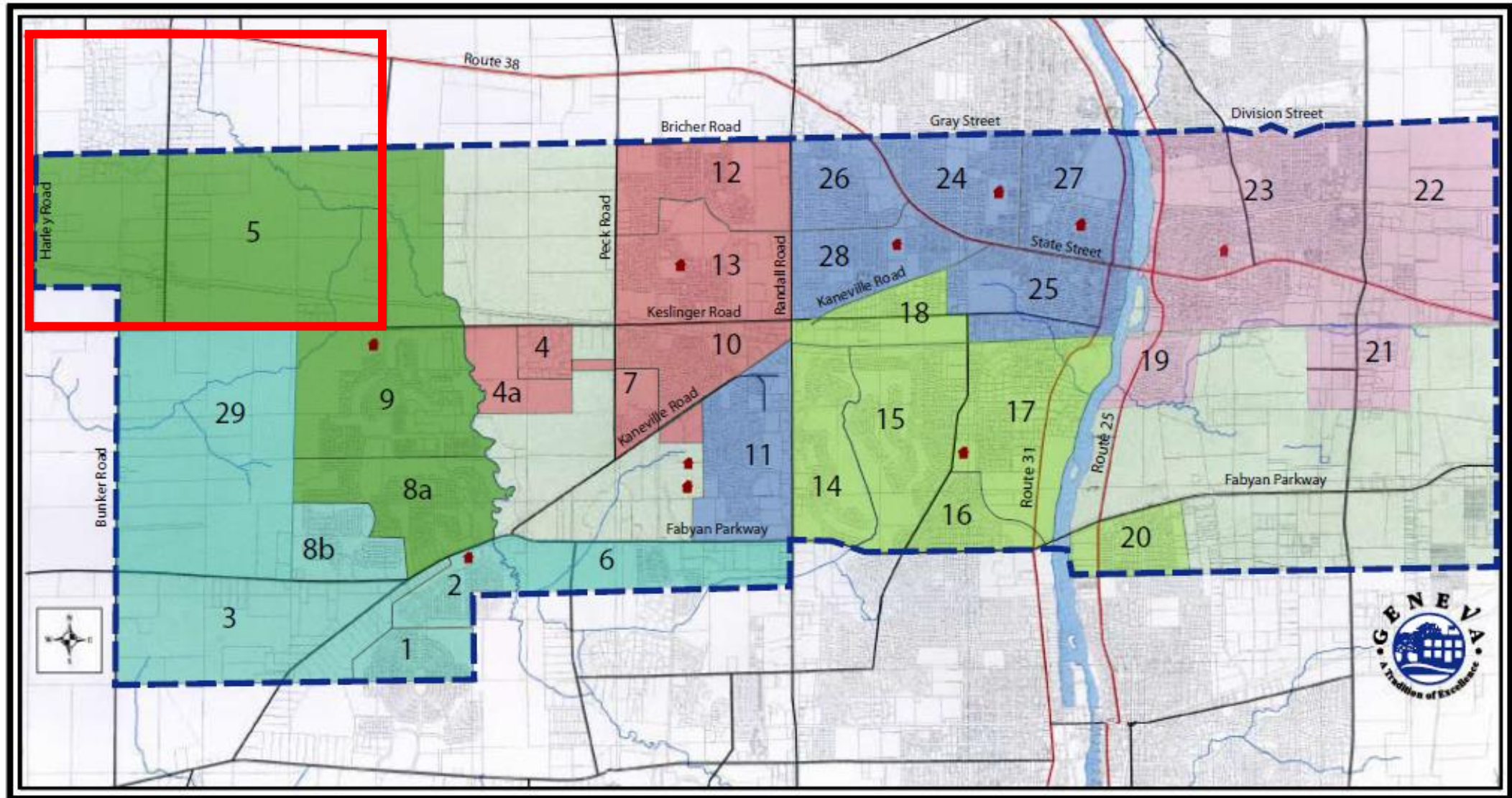


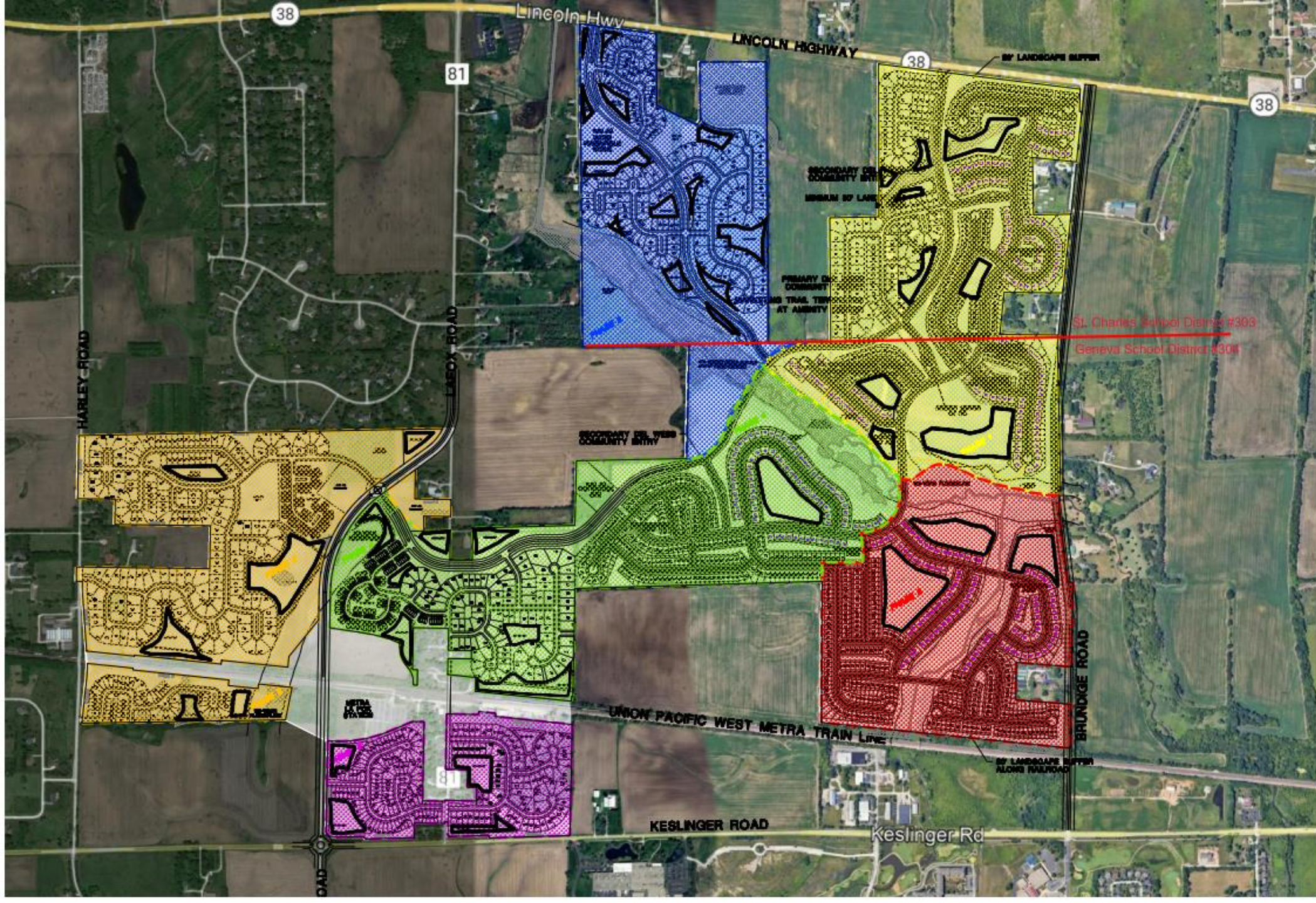
Proposed New Development

- Proposed Pulte Development in NW corner of District – Charles Farm
- Concept Plan submitted to City of St. Charles with an annexation proposal
- Nearly 1,000 acres developed in 6 phases - Proposal Includes:
 - Del Webb age-restricted community of 967 homes
 - 846 single family homes
 - 198 townhomes near LaFox center
- Roughly 75% of Residential Units would be within Geneva 304 Boundaries.

Community Unit School District 304

Boundary Map





St. Charles School District #303
 Geneva School District #304

SITE DATA

A. TOTAL AREA		960.74 Δ AC
B. PHASE I		220.68 Δ AC
MEADOWS UNITS 180' X 135'	94	
ESTATE UNITS 180' X 150'	363	
DEL. NEW UNITS	478	
TOTAL DENSITY	2.18 EU/AC	
C. PHASE II		154.38 Δ AC
SPRING UNITS 141' X 120'	59	
MEADOWS UNITS 180' X 135'	52	
ESTATE UNITS 180' X 150'	63	
TOTAL DENSITY	1.15 EU/AC	
D. PHASE III		146.65 Δ AC
DEL. NEW UNITS	334	
DENSITY	2.29 EU/AC	
E. PHASE IV		207.68 Δ AC
TOWNHOME UNITS	120	
MEADOWS UNITS 180' X 135'	64	
ESTATE UNITS 180' X 150'	40	
DEL. NEW UNITS	280	
TOTAL DENSITY	2.43 EU/AC	
F. PHASE V		168.62 Δ AC
TOWNHOME UNITS	78	
SPRING UNITS 141' X 120'	82	
MEADOWS UNITS 180' X 135'	100	
ESTATE UNITS 180' X 150'	84	
TOTAL DENSITY	1.98 EU/AC	
G. PHASE VI		63.85 Δ AC
SPRING UNITS 141' X 120'	103	
MEADOWS UNITS 180' X 135'	83	
TOTAL DENSITY	2.91 EU/AC	
H. TOTAL		960.74 Δ AC
TOWNHOME UNITS	198	
SPRING UNITS 141' X 120'	224	
MEADOWS UNITS 180' X 135'	308	
ESTATE UNITS 180' X 150'	226	
DEL. NEW UNITS	967	
TOTAL DENSITY	2.08 EU/AC	

PREPARED BY:
CEMCON, Ltd.
 Consulting Engineers, Land Surveyors & Planners
 2280 White Oak Circle, Suite 100
 Aurora, Illinois 60502-9675
 PH: 630.862.2100 FAX: 630.862.2199
 E-Mail: info@cemcon.com Website: www.cemcon.com

DISC NO.: 40166 FILE NAME: CONCEPT PLAN
 DRAWN BY: FRP FLD. BK. / PG. NO.: BK./PG.
 COMPLETION DATE: 5-30-24 JOB NO.: 402.166
 XREF: PROJECT MANAGER: CM
 REVISION DATE: 6-25-24 6-25-24, 7-29-24, 7-30-24

Proposed New Development

- St. Charles Next Steps:
 - Plan Commission: 9/4
 - Planning and Development Committee: 9/9
- Many perspectives on the issue
- If the project moves forward potential for:
 - Land Cash considerations for non-Del Web portion
 - Potential Students to Geneva 304 Beginning in 2032
 - Full Buildout in 2039
 - Preliminary estimates of new students to D304 range from 500-700 at buildout

Demographic Study

Graph 1: Total K-12 School District Enrollments and Projections

