



# Addressing Children and Youth Homelessness in Arkansas

11/8/2022

Jessica Hickman, Dr. CJ Huff, Tori Martinez



# What does “Experiencing Homelessness” mean?



Children who are experiencing homelessness are “individuals who lack a **fixed, regular, and adequate** nighttime residence”.

# McKinney-Vento Resources



There are resources available to these students to:

- Help them be academically successful
- Keep them engaged in school
- Allow them equitable access to school

# Our Leadership Challenge: Under Identification



## 4 Year Comparison

	2018	2019	2020	2021	2022
ACTUAL	13,865	13,808	13,242	11,740	13,580
EXPECTED*	15,100	15,175	15,545	15,503	TBD

\*5% of the number of students qualifying for Free/Reduced Lunch Rate

# Our Strategic Partners



EVERY ARKANSAN

## Who we are...

Inspiring community partnerships that open a way for all children to learn to lead and serve to their full potential.



# What we are doing...

Developing Train-the-Trainer Curriculum

Identification of Statewide Resources

Collaborating with State, Regional, and Local Partners



# What's next?

Begin Train-the-Trainer  
Training

Provide Ongoing Technical  
Assistance

Build Statewide Network for  
Collaboration





# Our Vision

To see every Arkansan chase their God given dream!



Food Security



Educational  
Enrichment



Community Access

# EVERY ARKANSAN



**CITYSERVE**  
ARKANSAS

ARKANSAS  
**DREAM  
CENTER**

# 2022 Update

## Arkansas Dream Center

**52,224** Meals Served

**25,493** Kids Attended Programming

**516** Programming Hours

**1,184** Community Visits

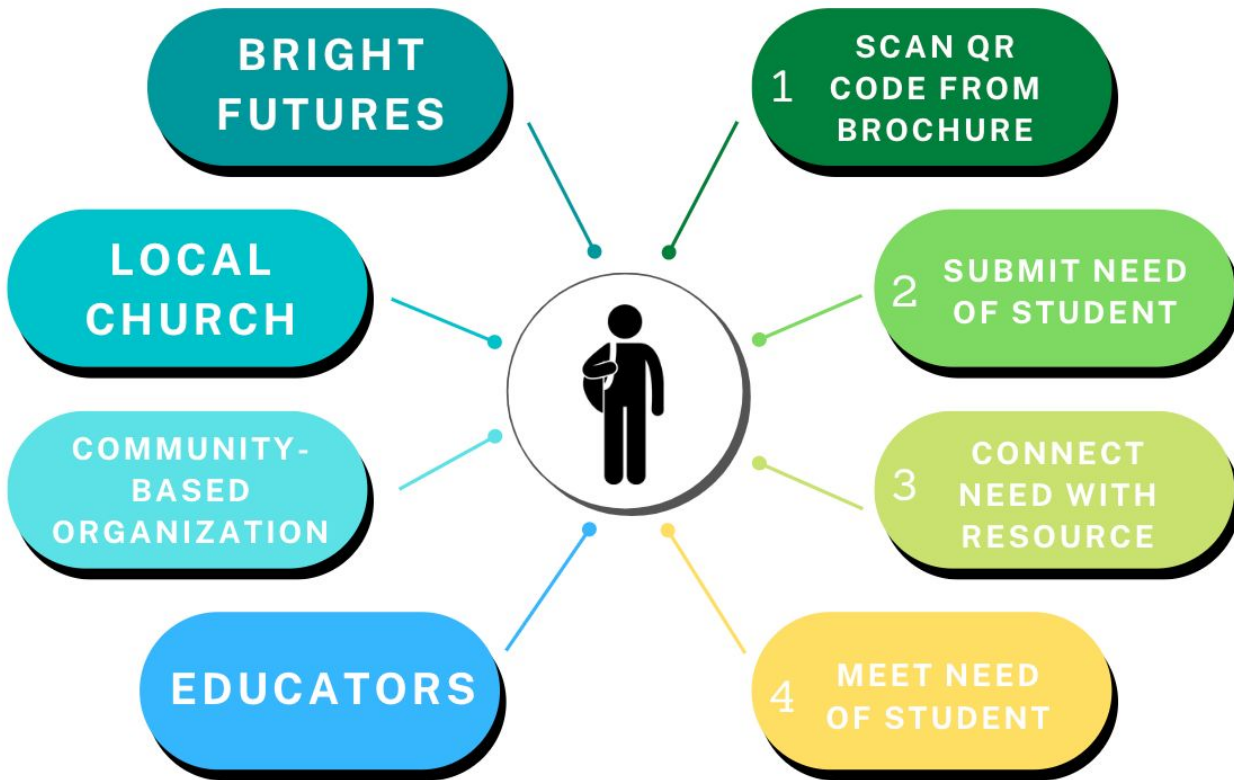
## City Serve

**64,500** People Impacted

**\$10,309,720** Resources Distributed  
to/through the Local Church



# All About The One



# Next Steps

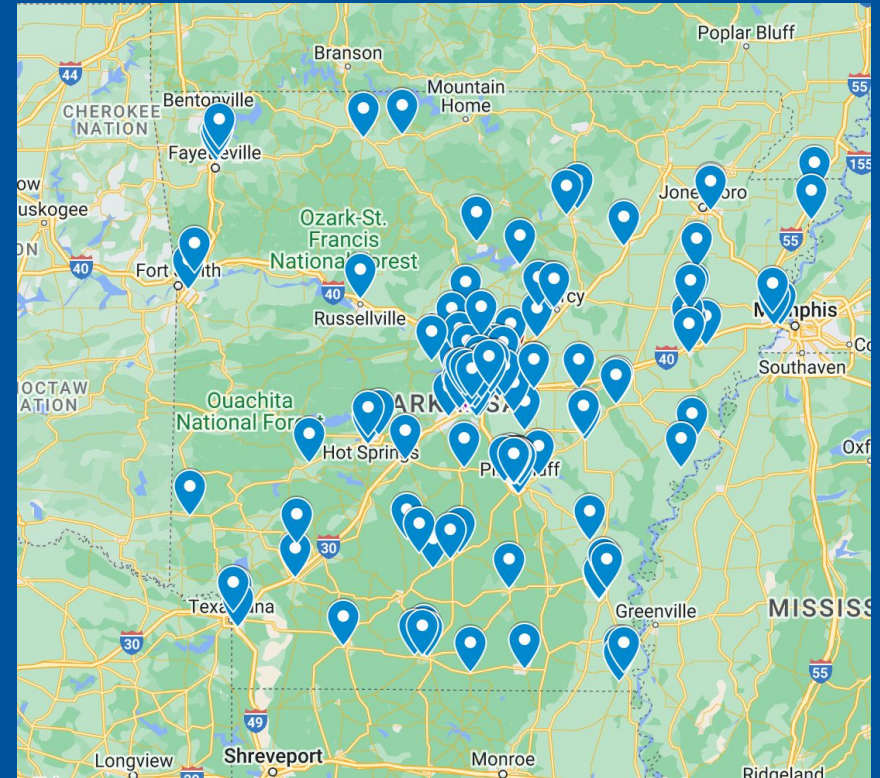
Scan the QR Code

Check out the EA Heat Map

Get churches involved



# EVERY ARKANSAN



# Collaborative Success Stories



Joint Webinars

A Day with Ruby Payne

Supporting Families in Crisis

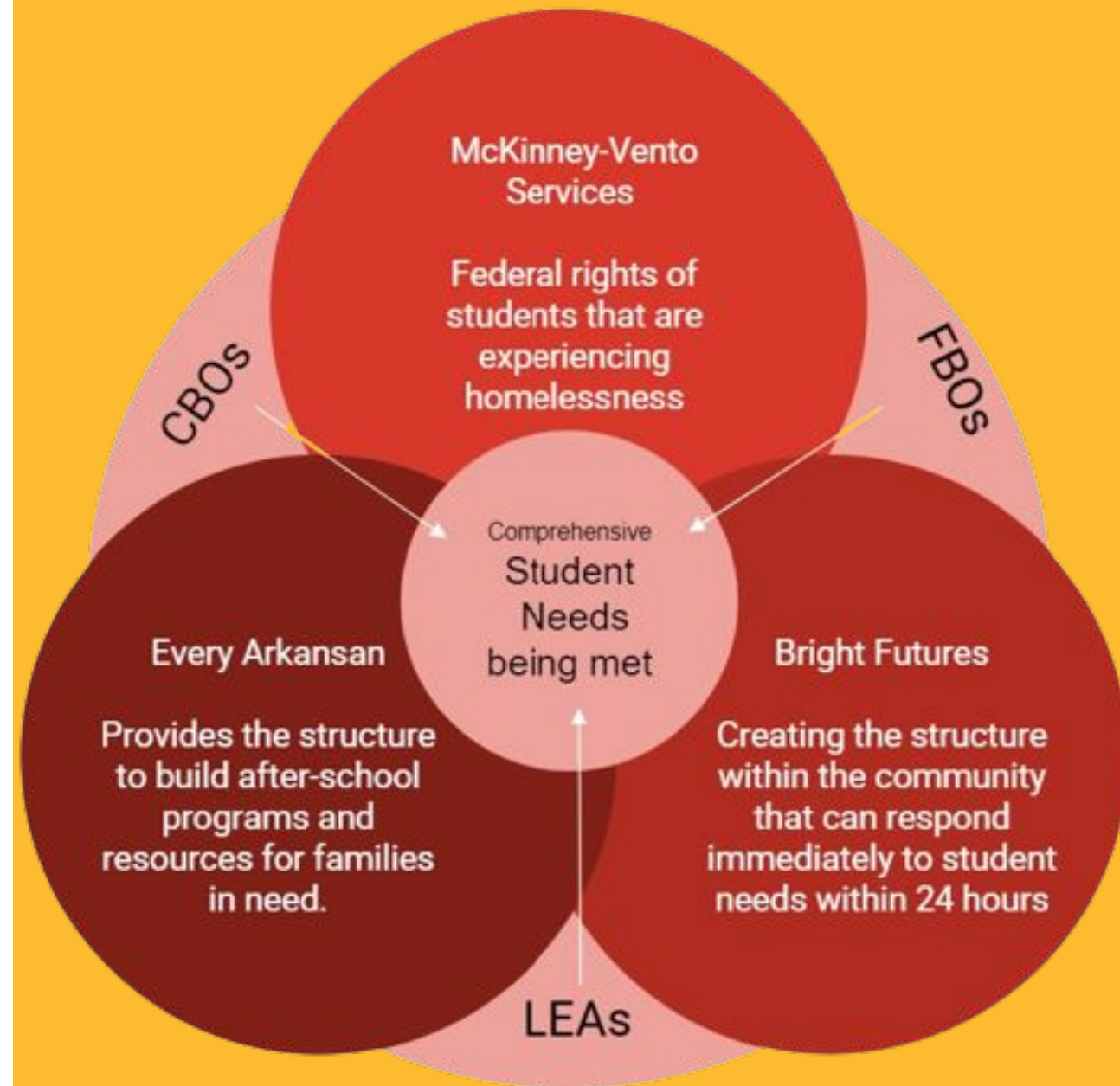
Collaborating efforts with ADE, BF and EA in communities across Arkansas

# Focal Points

Identification

Needs Assessment

Meeting the needs



# Contact Info

## Jessica Hickman

State Coordinator for Homeless Education,  
Arkansas Department of Education

[jessica.hickman@ade.arkansas.gov](mailto:jessica.hickman@ade.arkansas.gov)

## Dr. C.J. Huff

Bright Futures

Cell: 417-434-8311

[info@brightfuturesusa.org](mailto:info@brightfuturesusa.org)

## Tori Martinez

Every Arkansan

Cell: 501-351-0476

[tori@everyarkansan.org](mailto:tori@everyarkansan.org)



# EVERYARKANSAN

---

Arkansas Department of Education