



WOODRIDGE
SCHOOL DISTRICT 68



WOODRIDGE
SCHOOL DISTRICT 68

7925



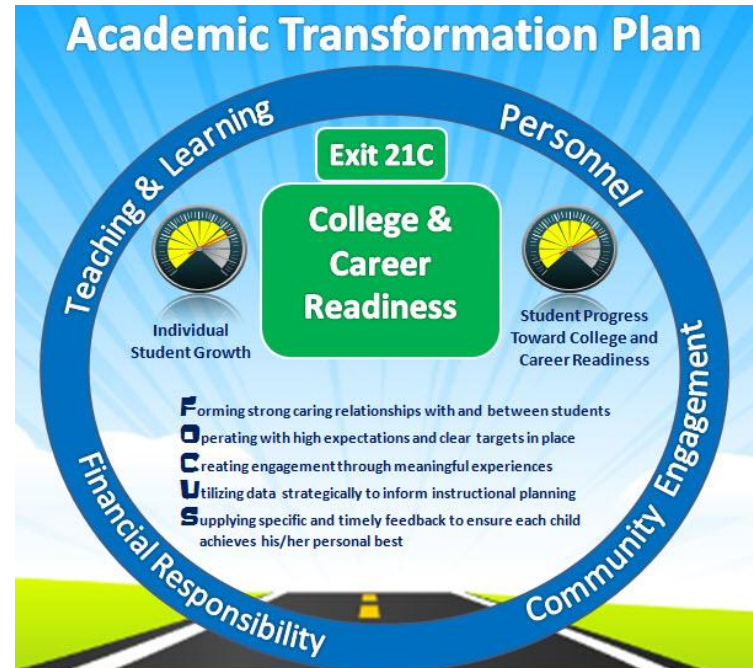
Academic Transformation Plan Summer Update

BOARD OF EDUCATION PRESENTATION | JULY 21, 2025

Our Mission & Vision

INSPIRING EDUCATION AND INNOVATION

In partnership with family and community, Woodridge School District 68 will provide a comprehensive educational foundation for all children in a safe, caring environment, preparing them to be productive, responsible, and successful members of society.



Today's Targets

ATP UPDATE: SUMMER 2025

- Give an update on current grant funding and potential implications
- Provide academic and social emotional growth data
- Preview teaching and learning focus areas for the coming year



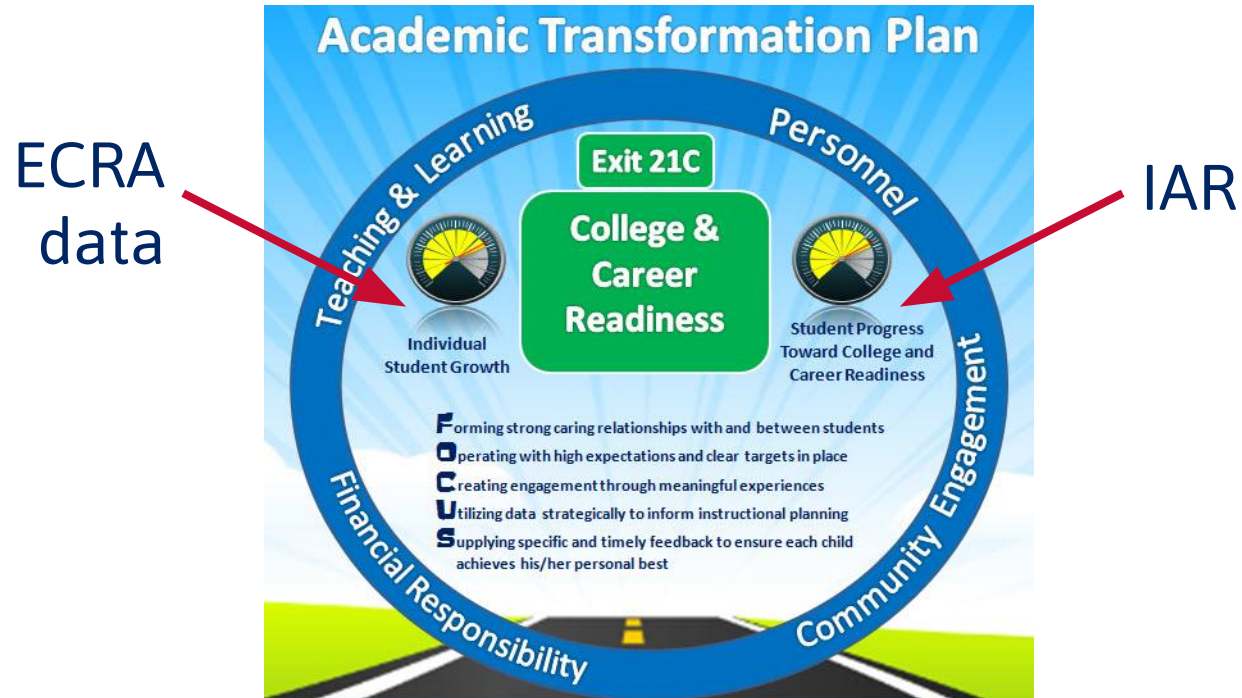
Teaching & Learning Grants

STATUS UPDATES AND IMPLICATIONS

- **Title I:** Interventionists at elementary
 - Currently fully funded
- **Title II:** Professional development
 - Not funded, loss of ~\$80,000
- **Title III:** Multilingual Services (bilingual liaisons, professional development)
 - Not funded, loss of ~\$70,000
- **Title IV:** Well-Rounded Education, After School Spanish Program
 - Partially funded, loss of ~\$10,000
- **Unknown at this time**
 - Medicaid
 - Head Start

Assessment Data

TWO GAUGES



Changes in Models

INDIVIDUAL STUDENT GROWTH

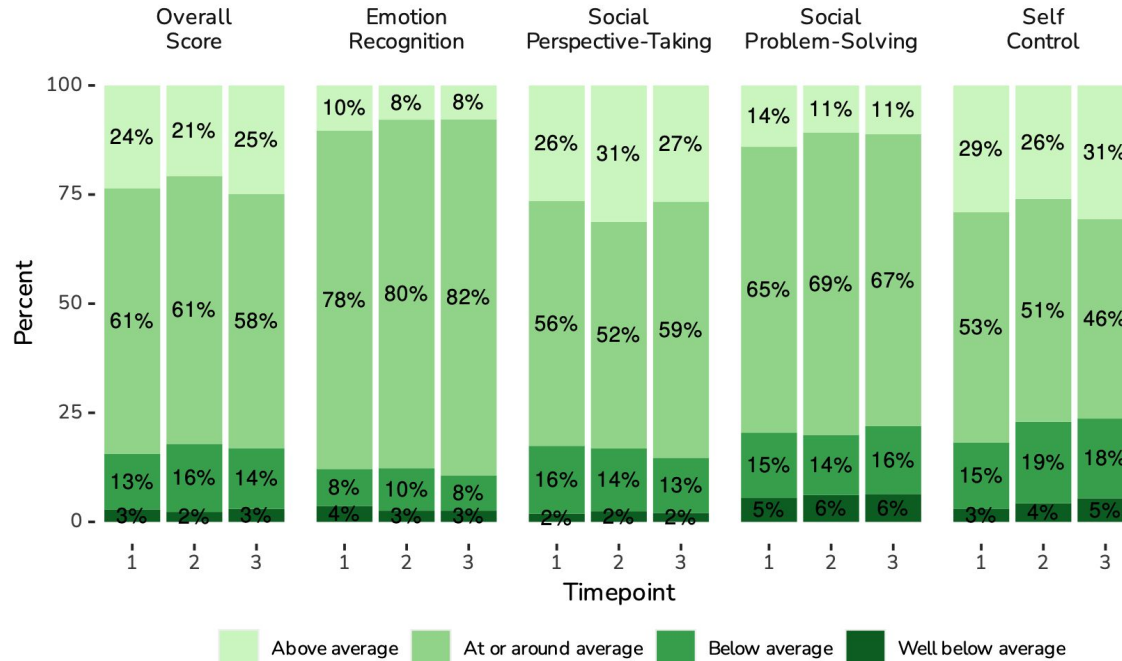
Model instability has left us in flux

- ECRA: Model changed due to addition of AIMSweb testing, concerns about assessment
- IAR: New proficiency levels being finalized at the state level

SELweb

GRADES K-3

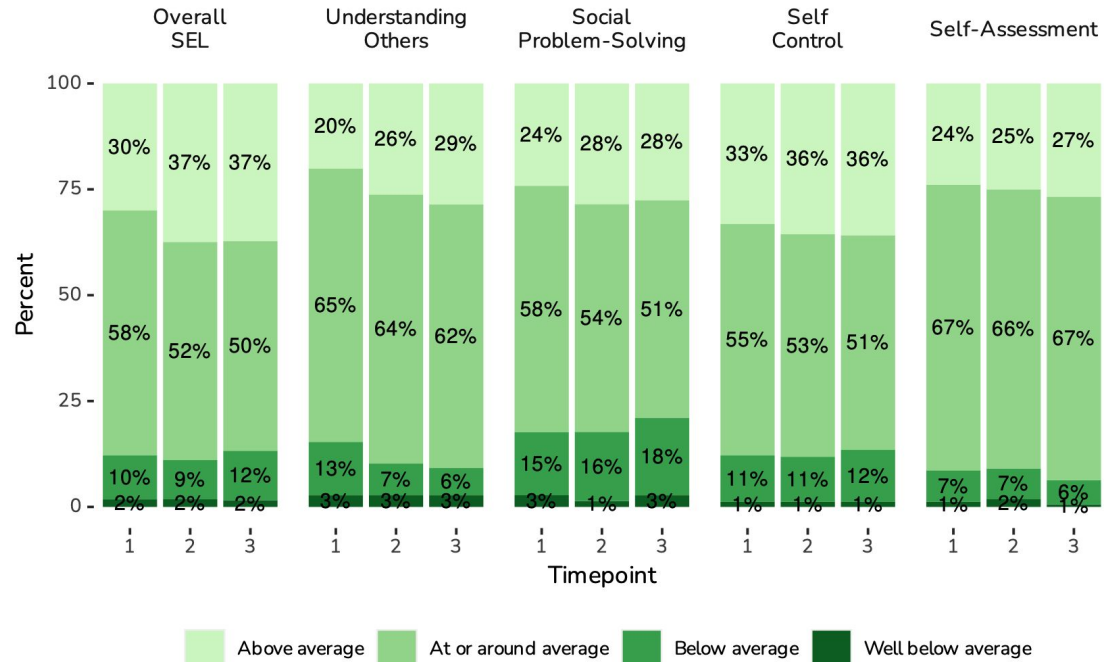
Woodridge School District 68, Change Over Time: 1121 common students



SELweb

GRADES 4-6

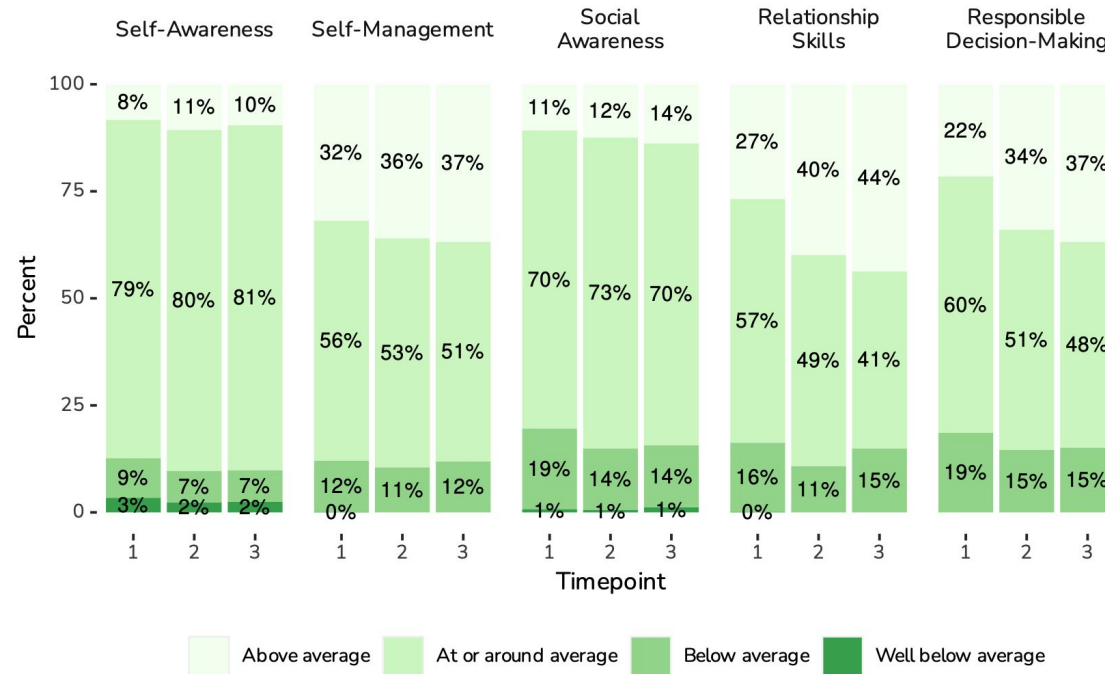
Woodridge School District 68, Change Over Time: 508 common students



SELweb

GRADES 7-8

Woodridge School District 68, Change Over Time: 648 common students

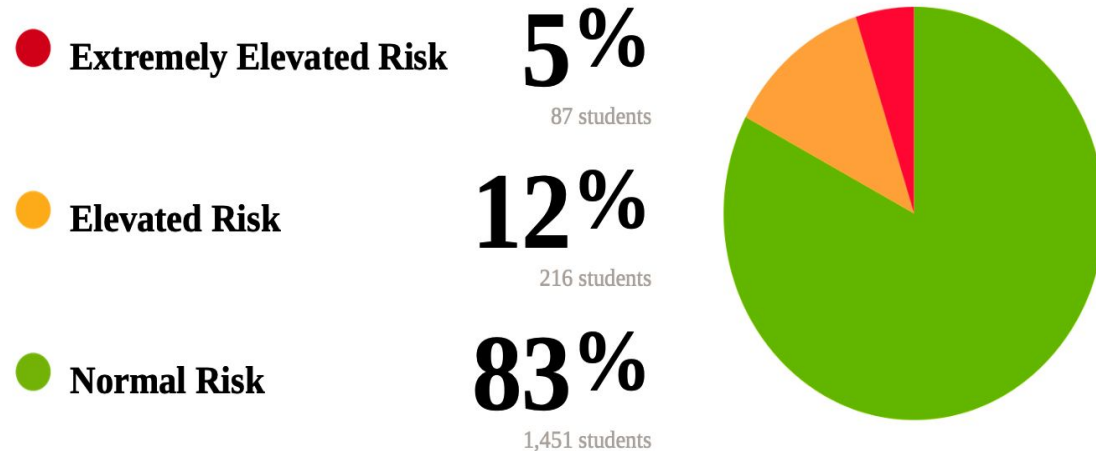


Behavioral and Emotional Screening System (BESS)

GRADES 3-8

Behavioral and Emotional Risk Index

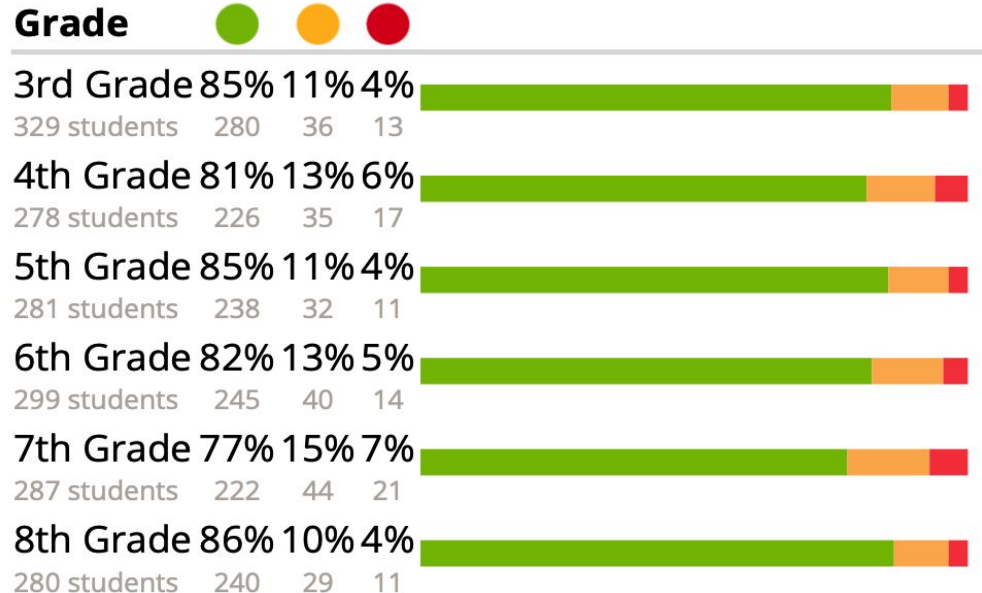
BESS-3 (Student)



Behavioral and Emotional Screening System (BESS)

GRADE LEVEL DISTRIBUTION

Risk Distribution by Grade



Teaching and Learning Plans

2025-26

- Collective teacher efficacy
 - Impact Teams
- New K-5 math curriculum
- New Project Lead the Way science in grade 6
- MLS/ELL audit implementation

Instructional Coaching

NEW TEACHERS

- 33 certified staff hired
 - At least 1 more
 - 4 rehires
- Approximately one dozen staff in new positions
- Revised more intensive coaching/instructional onboarding plan for new staff

Recap

ATP UPDATE: SUMMER 2024

1. Gave an update on current OTL grant funding and potential implications
2. Provided academic and social emotional growth data
3. Previewed Teaching and Learning focus areas for the coming year



Questions? Thoughts?

ATP UPDATE: SUMMER 2025

