

# STAR and ISAT Data Analysis

2014

# Overview of Assessment Report

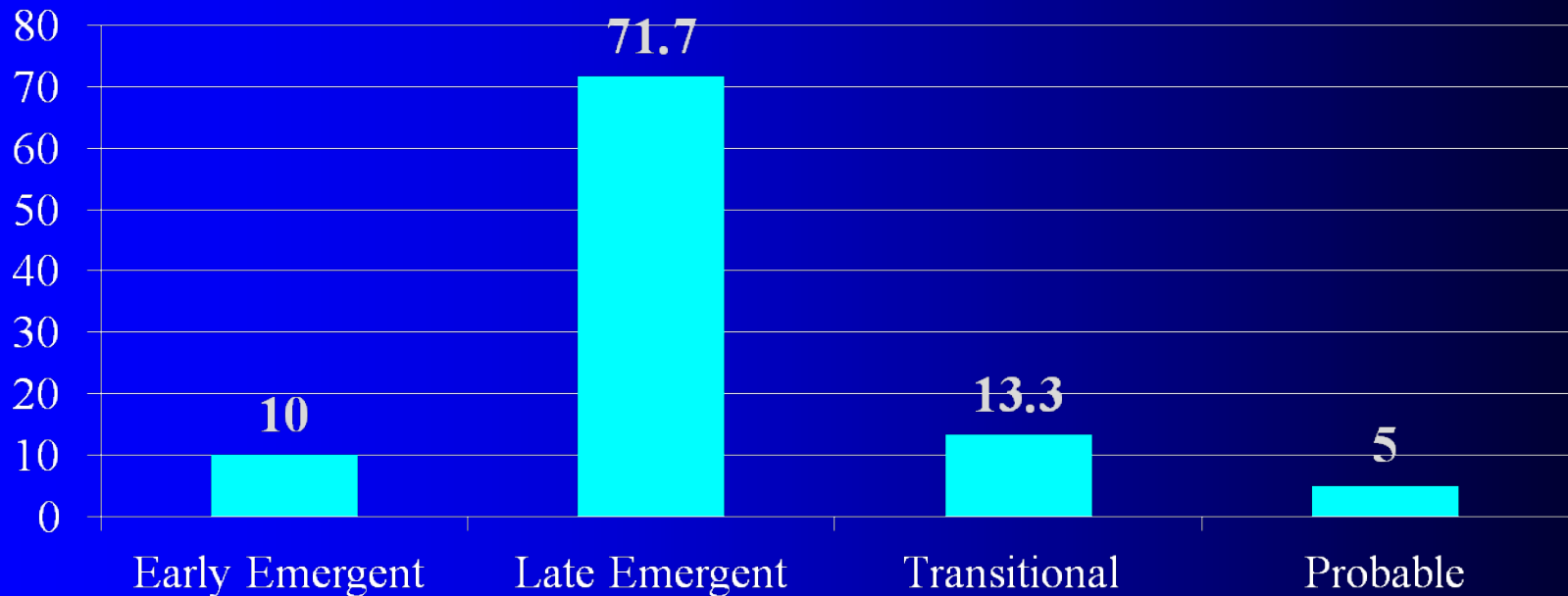
- First STAR benchmarking window in Fall 2014
- STAR has provided us with a baseline
- We will continue to monitor STAR data as additional data points are added
- ISAT longitudinal comparison data represents three different assessments
- Spring 2014 was the last ISAT testing period for Reading and Math
- Illinois will be administering the PARCC assessment to all students in grades 3-8 as a Performance Based Assessment in March of 2015 and an End of Year Assessment in May 2015
- It has not yet been determined how or when the PARCC results will be shared

# STAR Data Analysis

2014

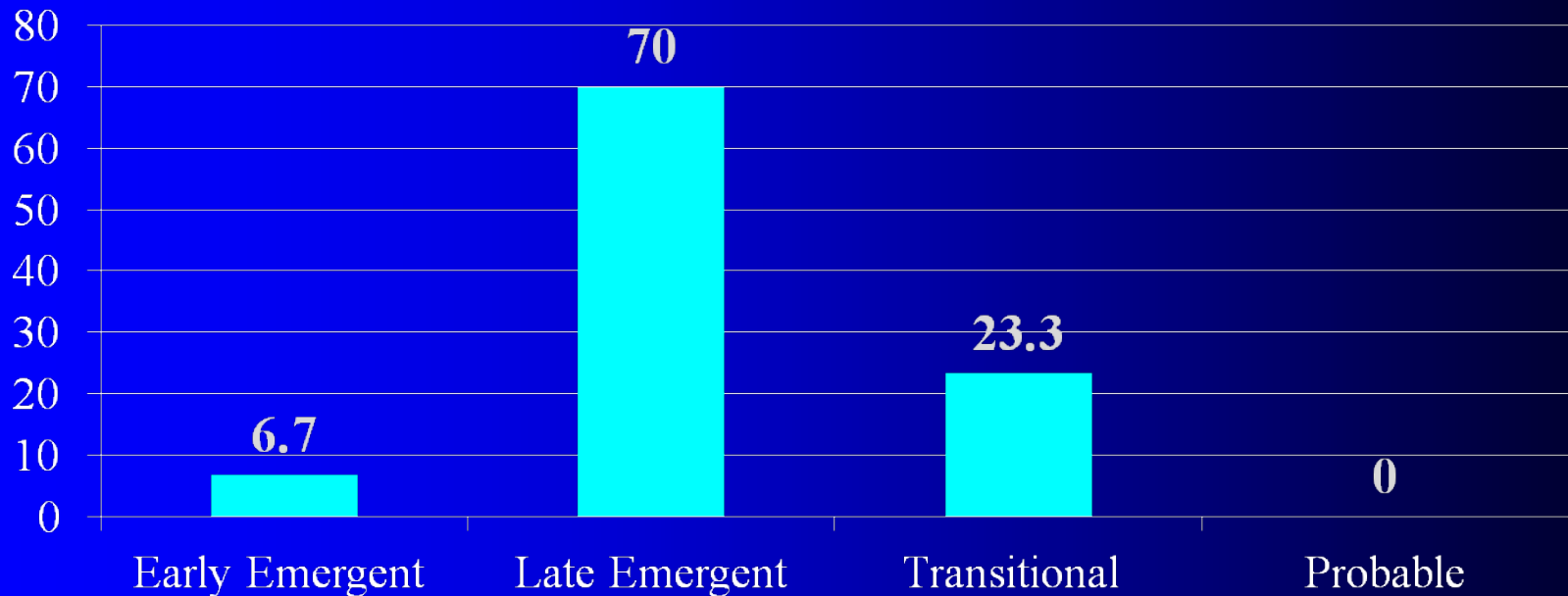
# STAR Early Literacy Kindergarten Summary Fall 2014

percentage of the 60 assessed students that scored  
within the scaled score range for this reader  
classification



# STAR Early Literacy Grade 1 Summary Fall 2014

percentage of the 30 assessed students that scored  
within the scaled score range for this reader  
classification



# STAR NPR

## Current 2<sup>nd</sup>-8<sup>th</sup> Graders

\* and a portion of the Grade 1 students, but not the whole Grade 1 population

	1 <sup>st</sup> *	2nd	3rd	4th	5th	6th	7th	8th
Reading	68 *59 students	66	67	67	60	64	63	56
Math	73 *80 students	70	88	76	76	82	82	70

# ISAT Data Analysis

2014

# Changes for 2014

- New cut scores (continued from 2013)
- New assessment



# New ISAT Cut Scores in 2013

Illinois State Board of Education raised the cut scores to better align with the new Common Core State Standards

## Grade 3 Reading

Year	Academic Warning	Below	Meets	Exceeds
2012	120-155	156-190	191-226	227-329
2013	120-159	160-206	207-235	236-329

# New ISAT Cut Scores in 2013

Illinois State Board of Education raised the cut scores to better align with the new Common Core State Standards

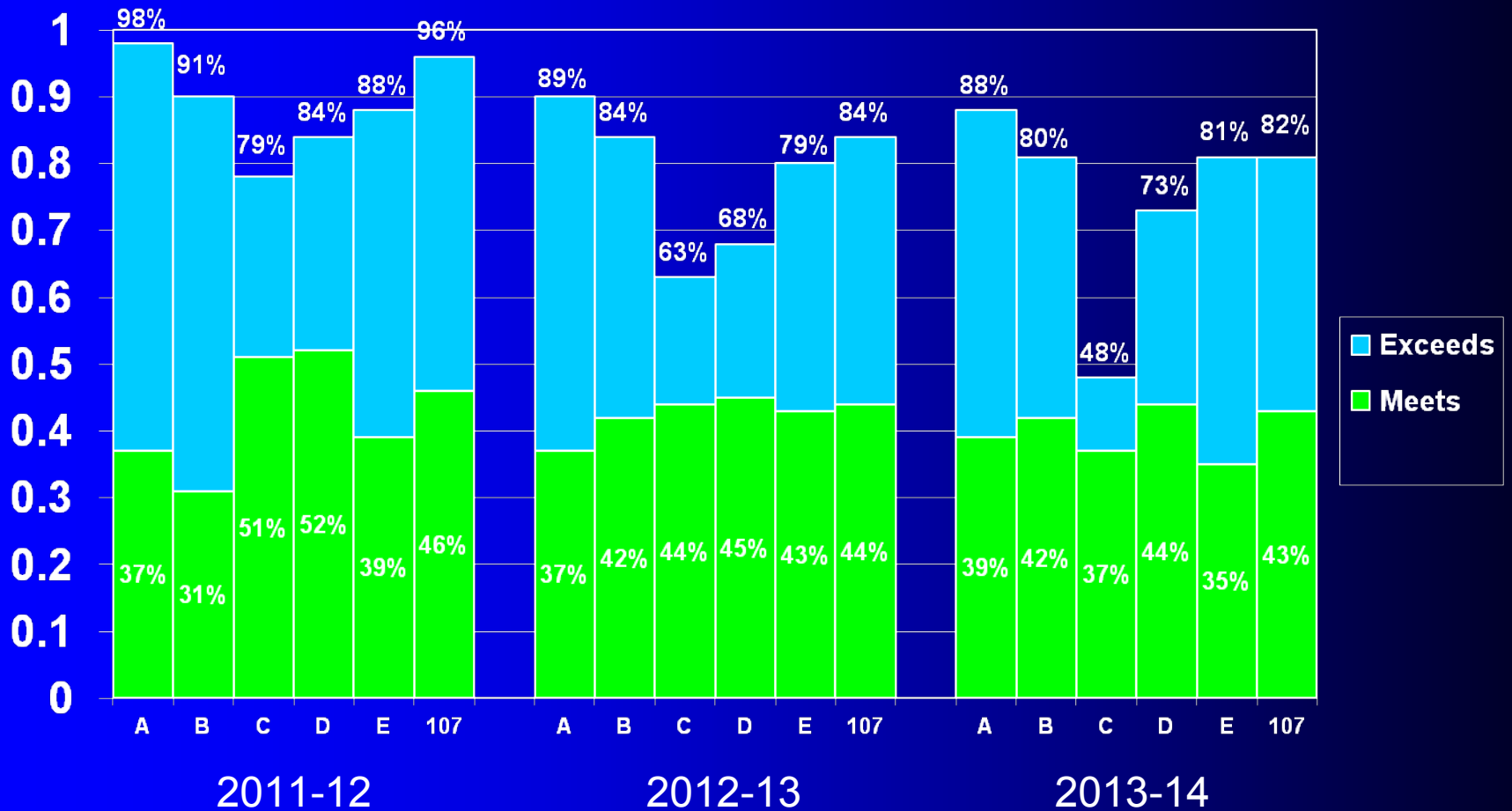
## Grade 3 Math

Year	Academic Warning	Below	Meets	Exceeds
2012	120-162	163-183	184-223	224-341
2013	120-172	173-213	214-254	255-341

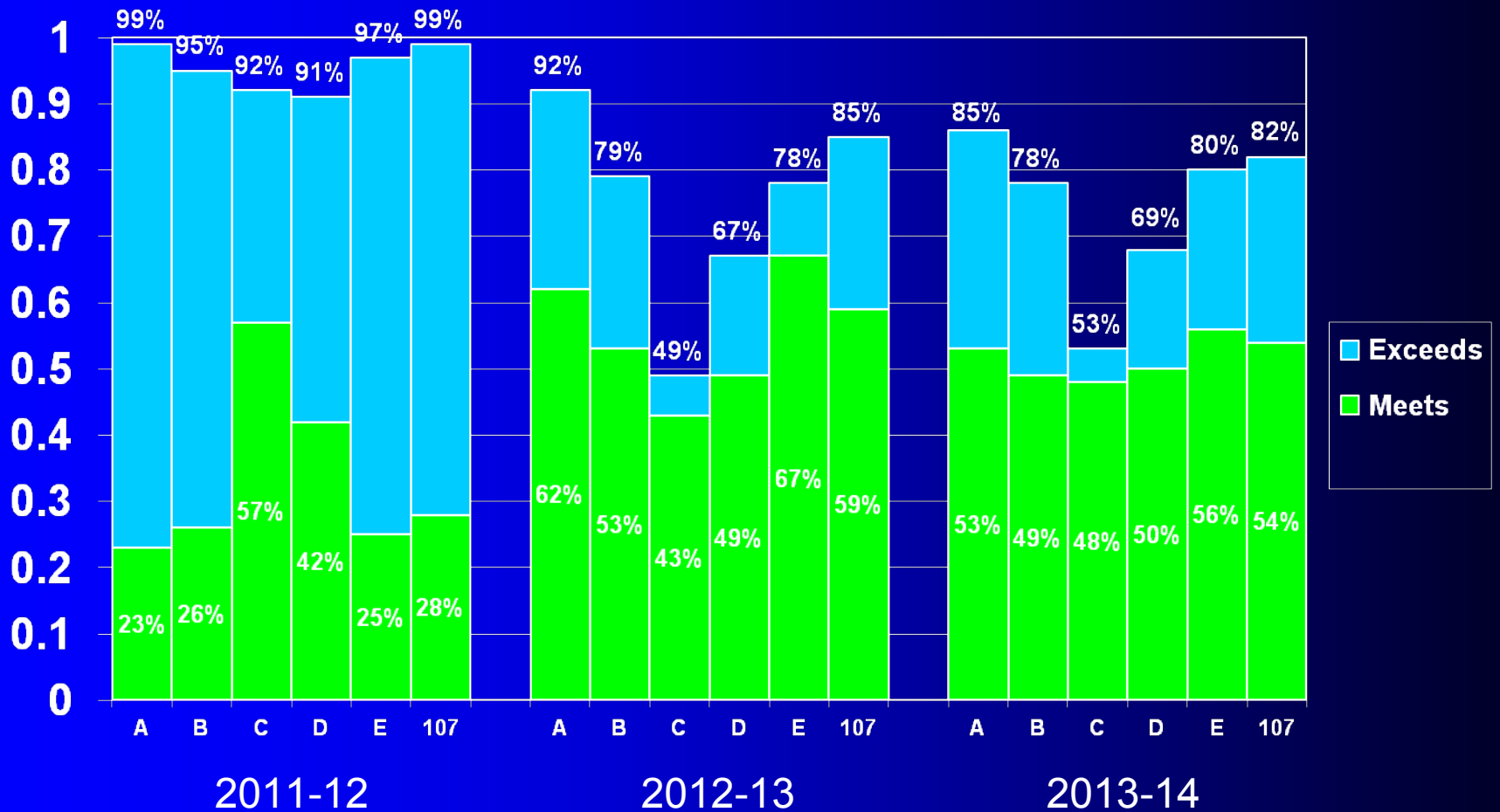
# Common Core Testing

- 2013 ISAT contained Common Core items (20%) as well as Illinois State Standard items
- 2014 ISAT was fully aligned to the Common Core Standards
- 2015 ISAT will be replaced by PARCC

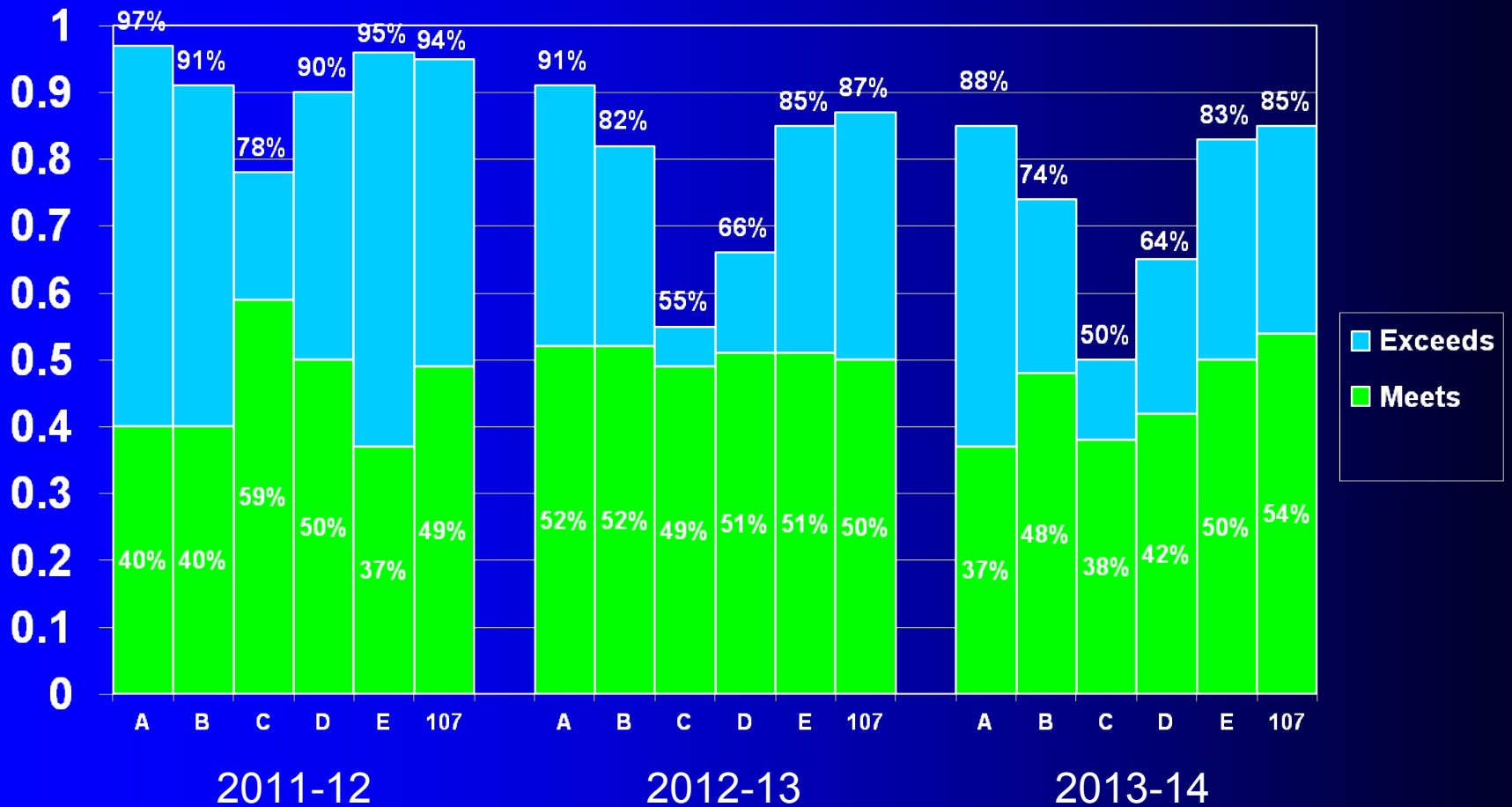
# Comparison of Lyons Township Associate Schools ISAT Scores – Meets and Exceeds % Third Grade Reading



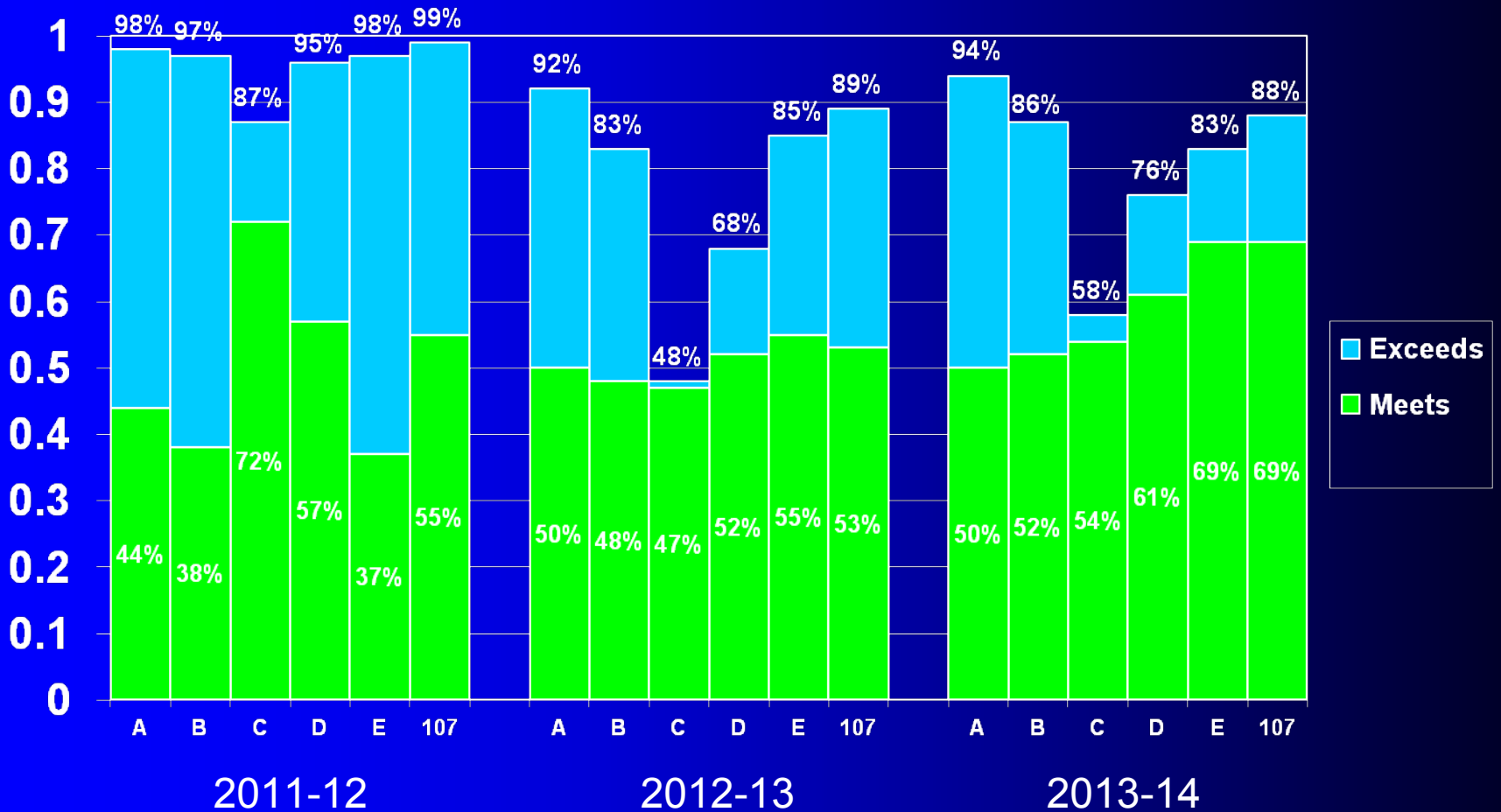
# Comparison of Lyons Township Associate Schools ISAT Scores – Meets and Exceeds % Third Grade Math



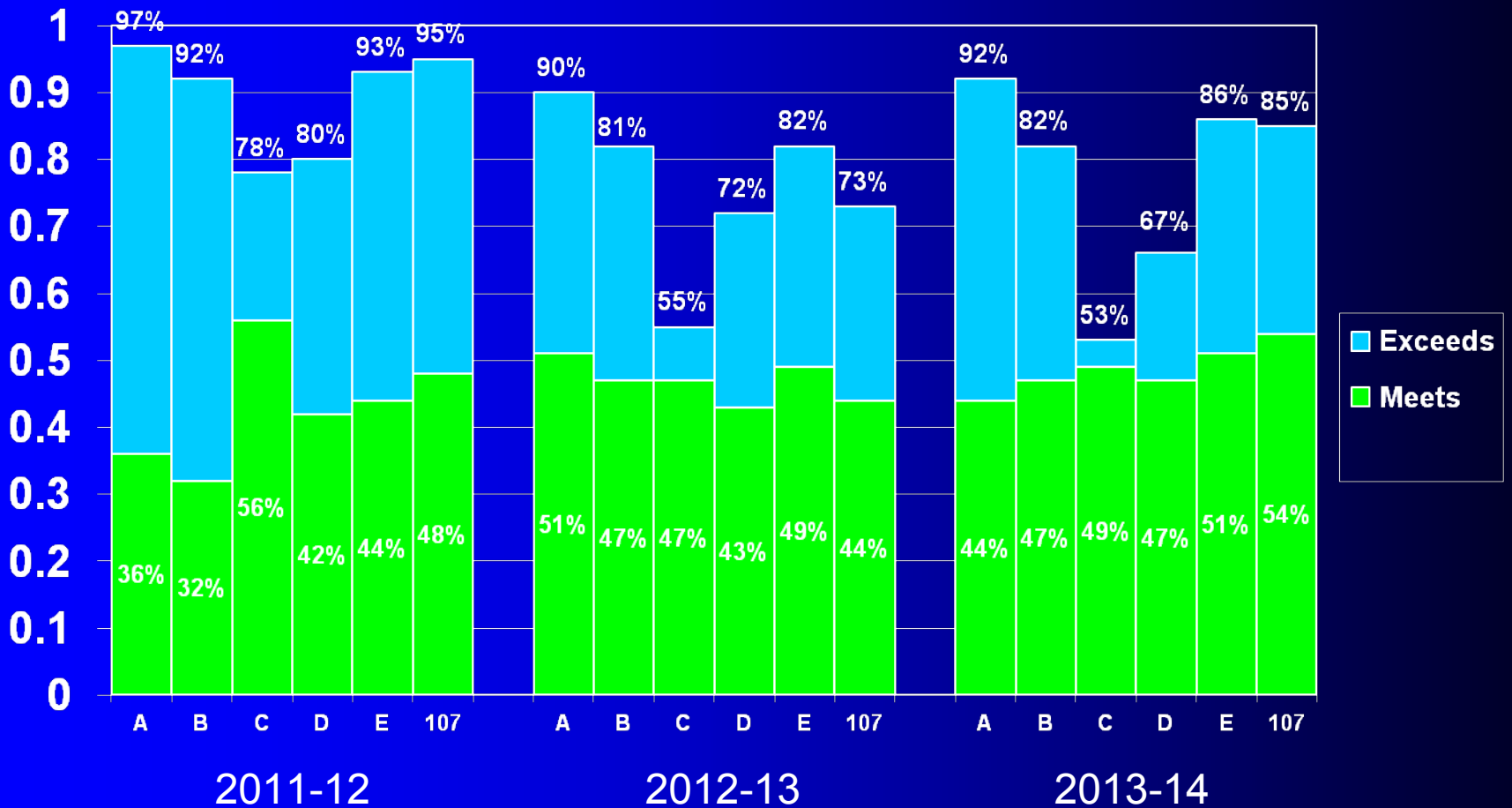
# Comparison of Lyons Township Associate Schools ISAT Scores – Meets and Exceeds % Fourth Grade Reading



# Comparison of Lyons Township Associate Schools ISAT Scores – Meets and Exceeds % Fourth Grade Math

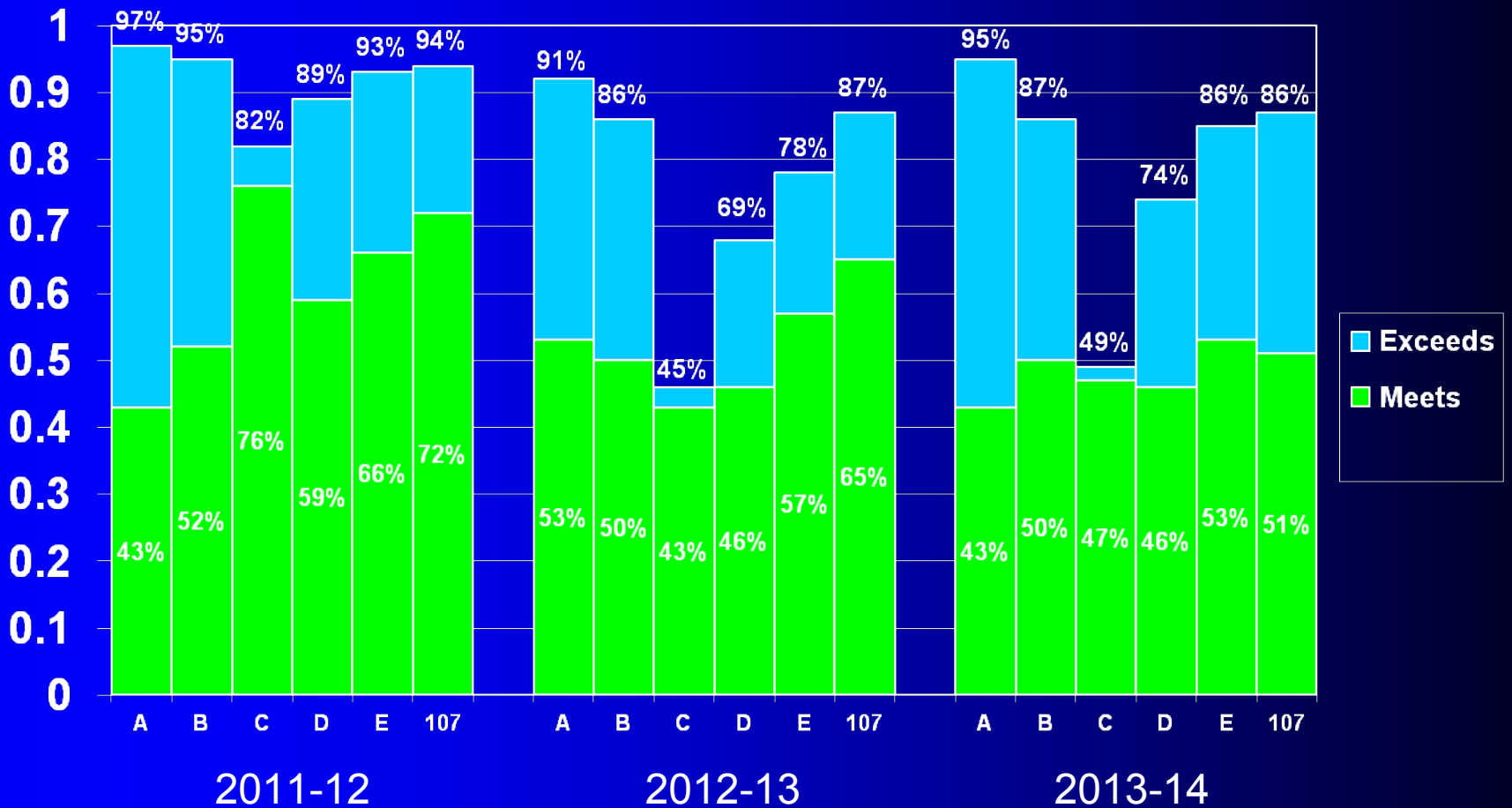


# Comparison of Lyons Township Associate Schools ISAT Scores – Meets and Exceeds % Fifth Grade Reading

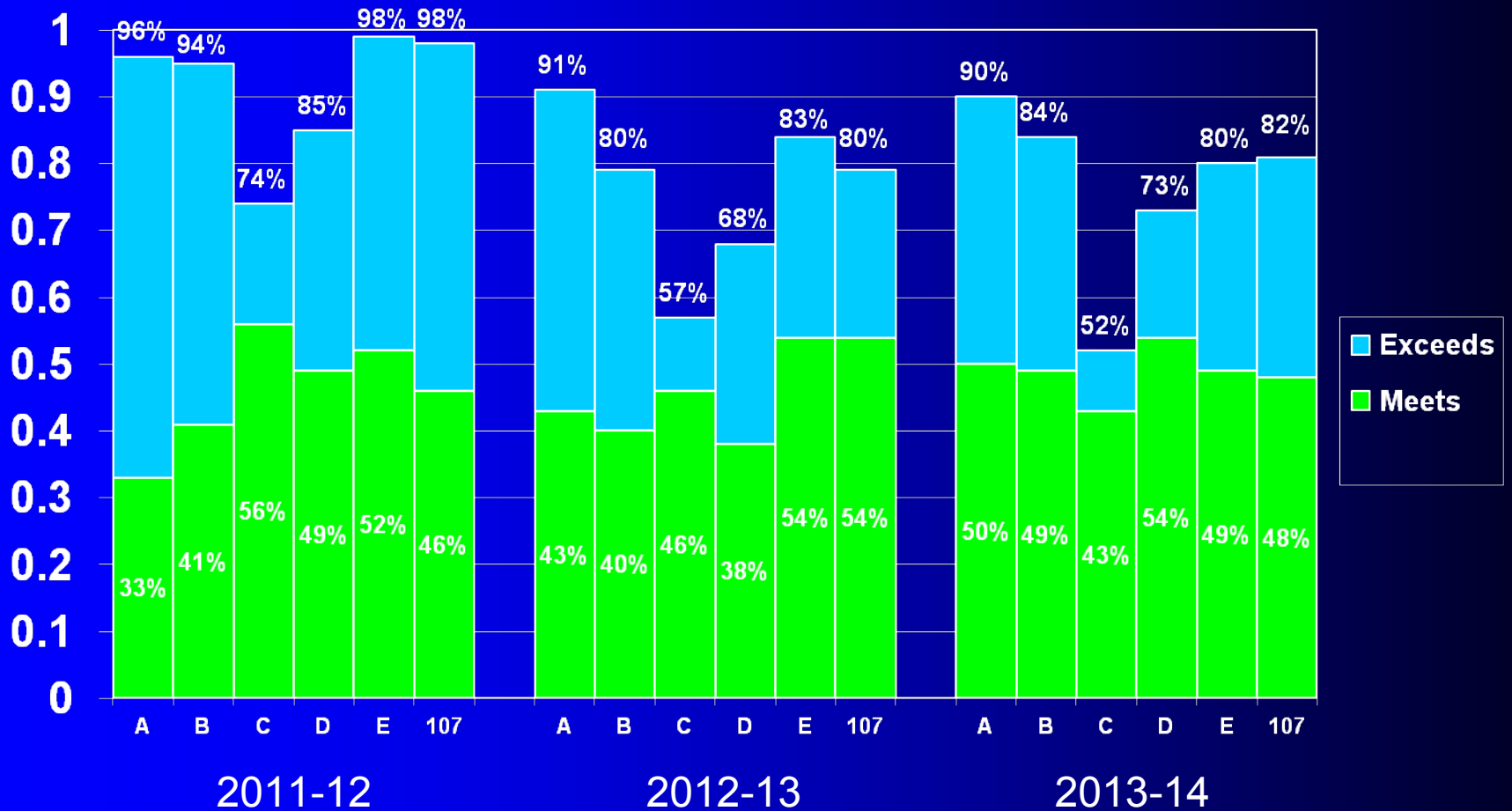




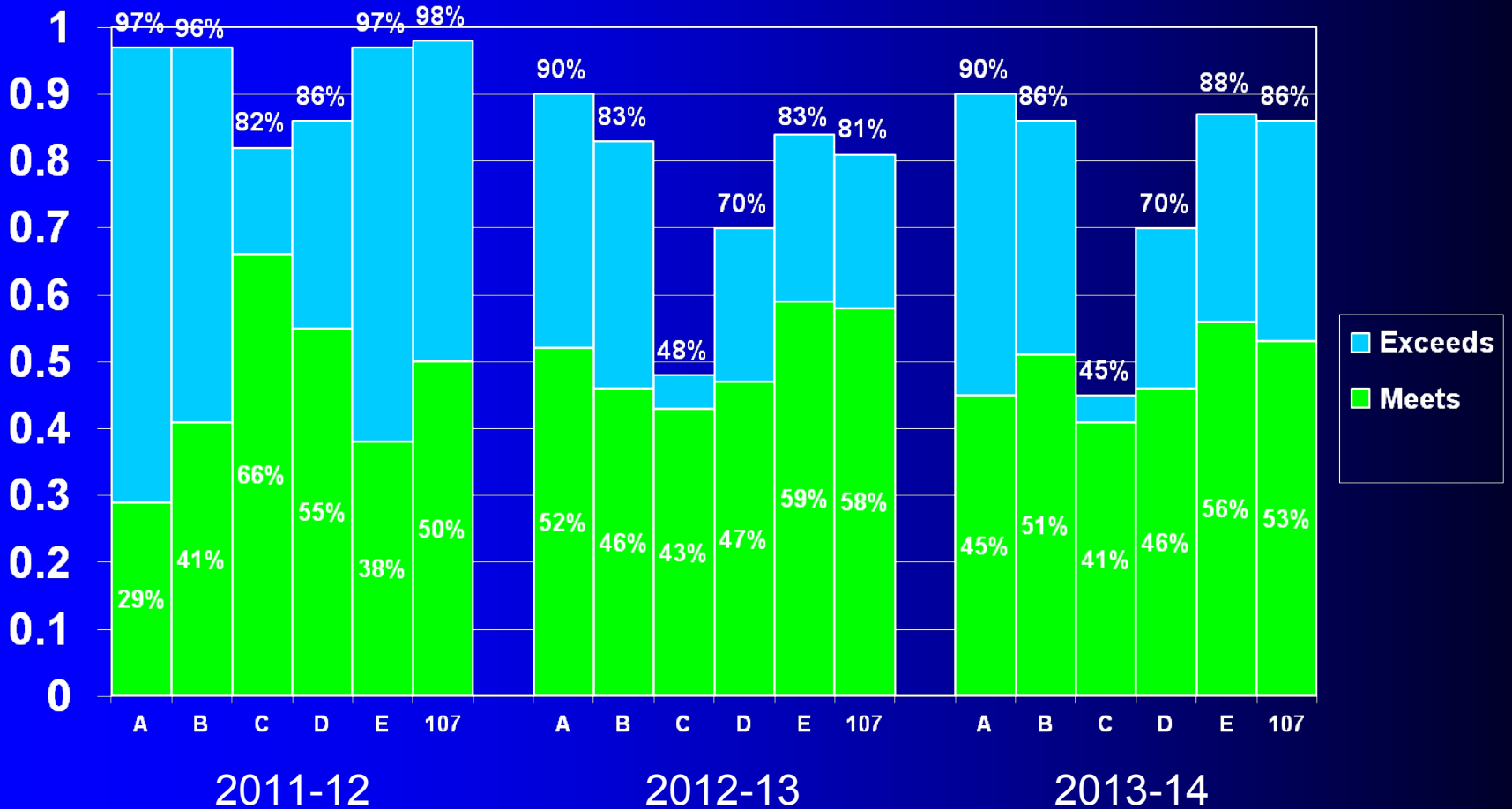
# Comparison of Lyons Township Associate Schools ISAT Scores – Meets and Exceeds % Fifth Grade Math



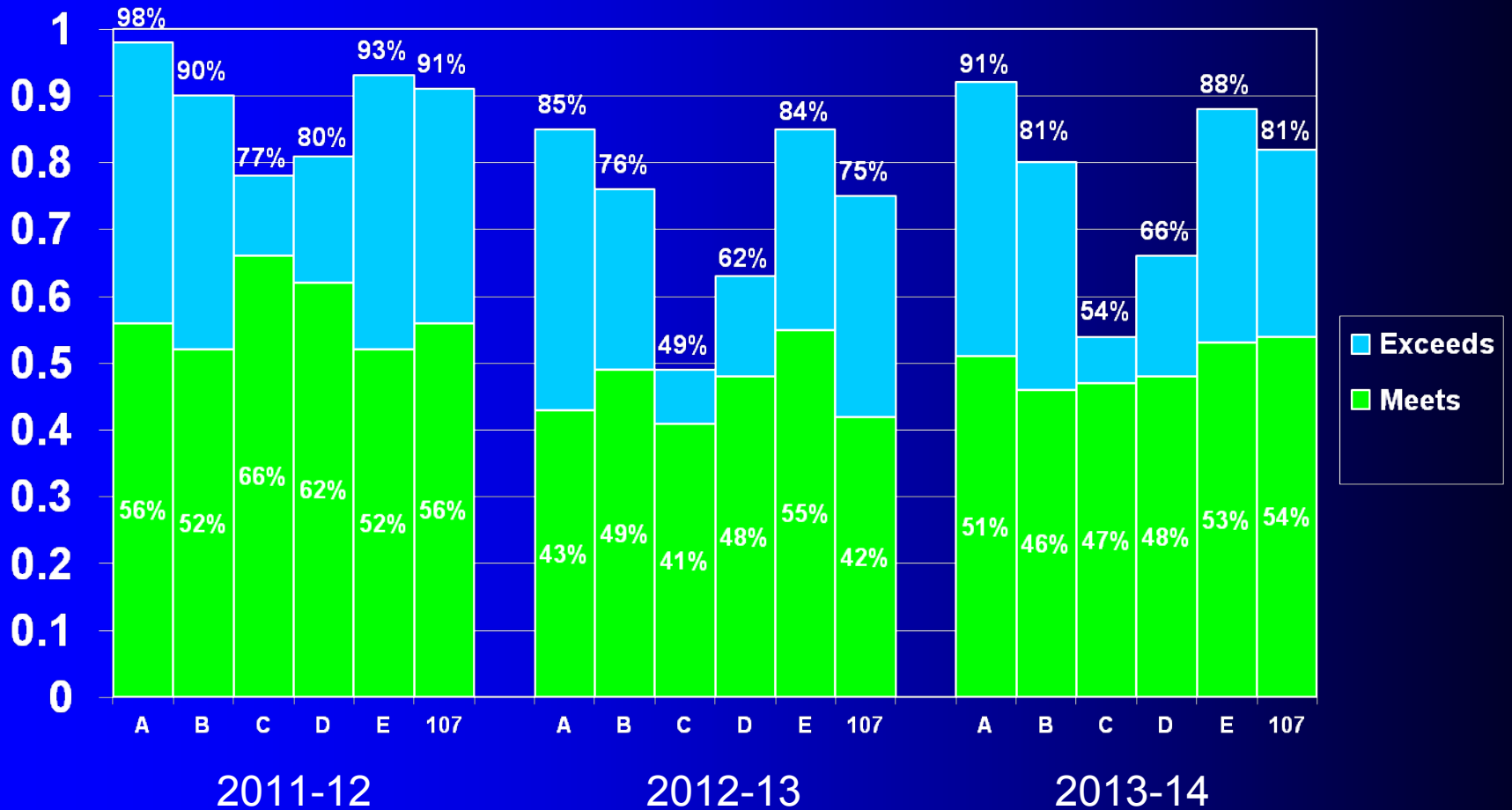
# Comparison of Lyons Township Associate Schools ISAT Scores – Meets and Exceeds % Sixth Grade Reading



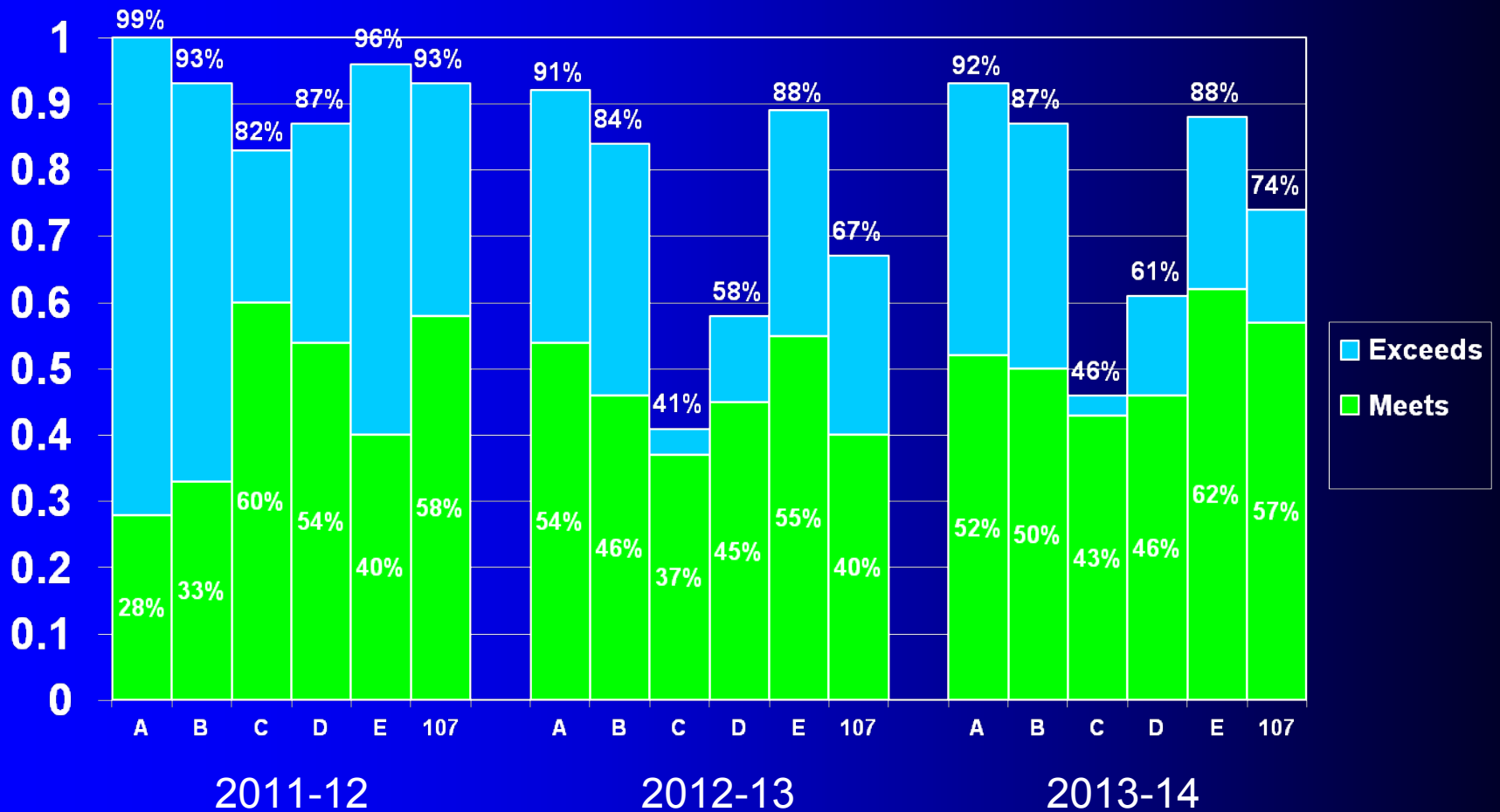
# Comparison of Lyons Township Associate Schools ISAT Scores – Meets and Exceeds % Sixth Grade Math



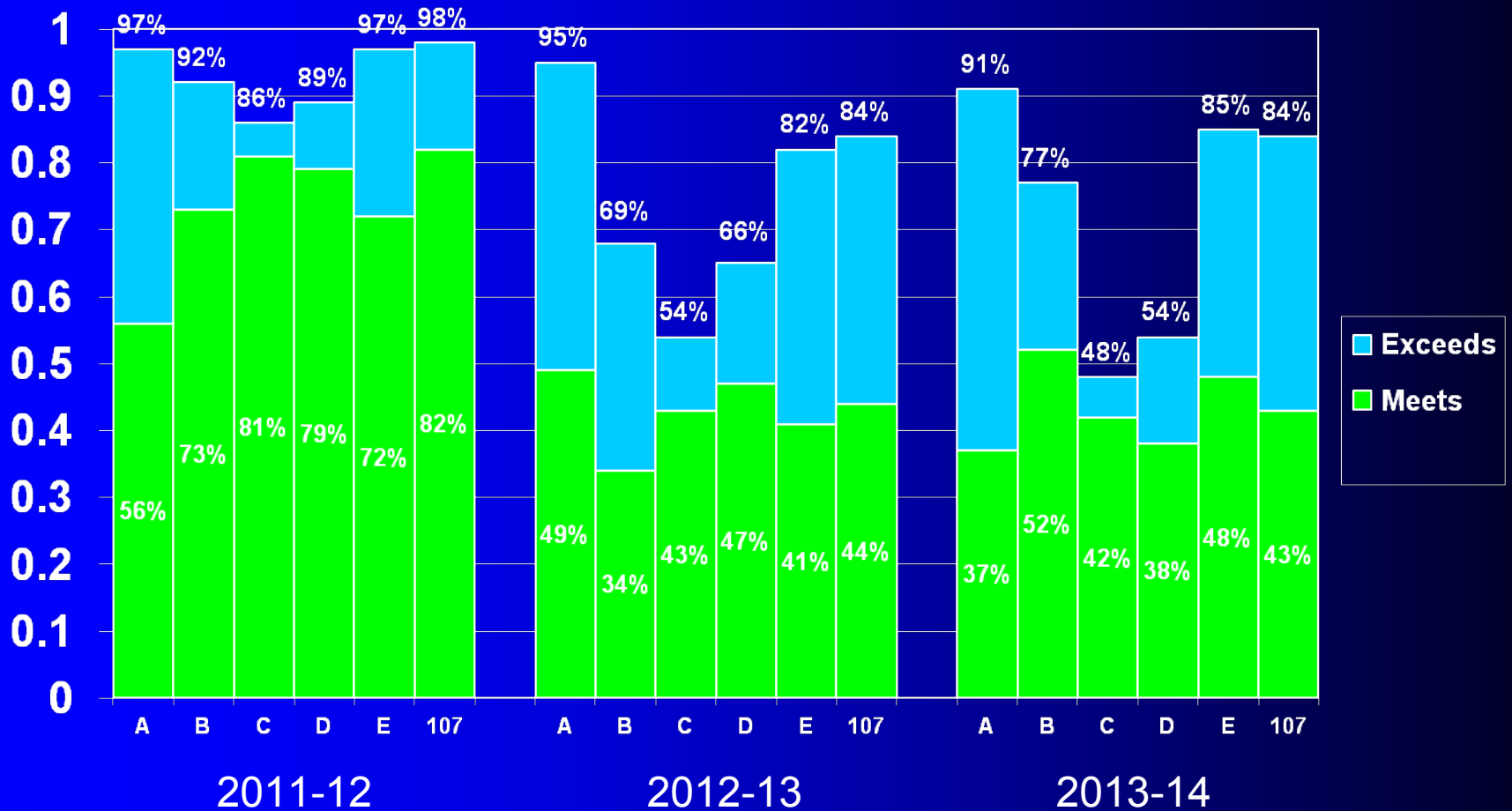
# Comparison of Lyons Township Associate Schools ISAT Scores – Meets and Exceeds % Seventh Grade Reading



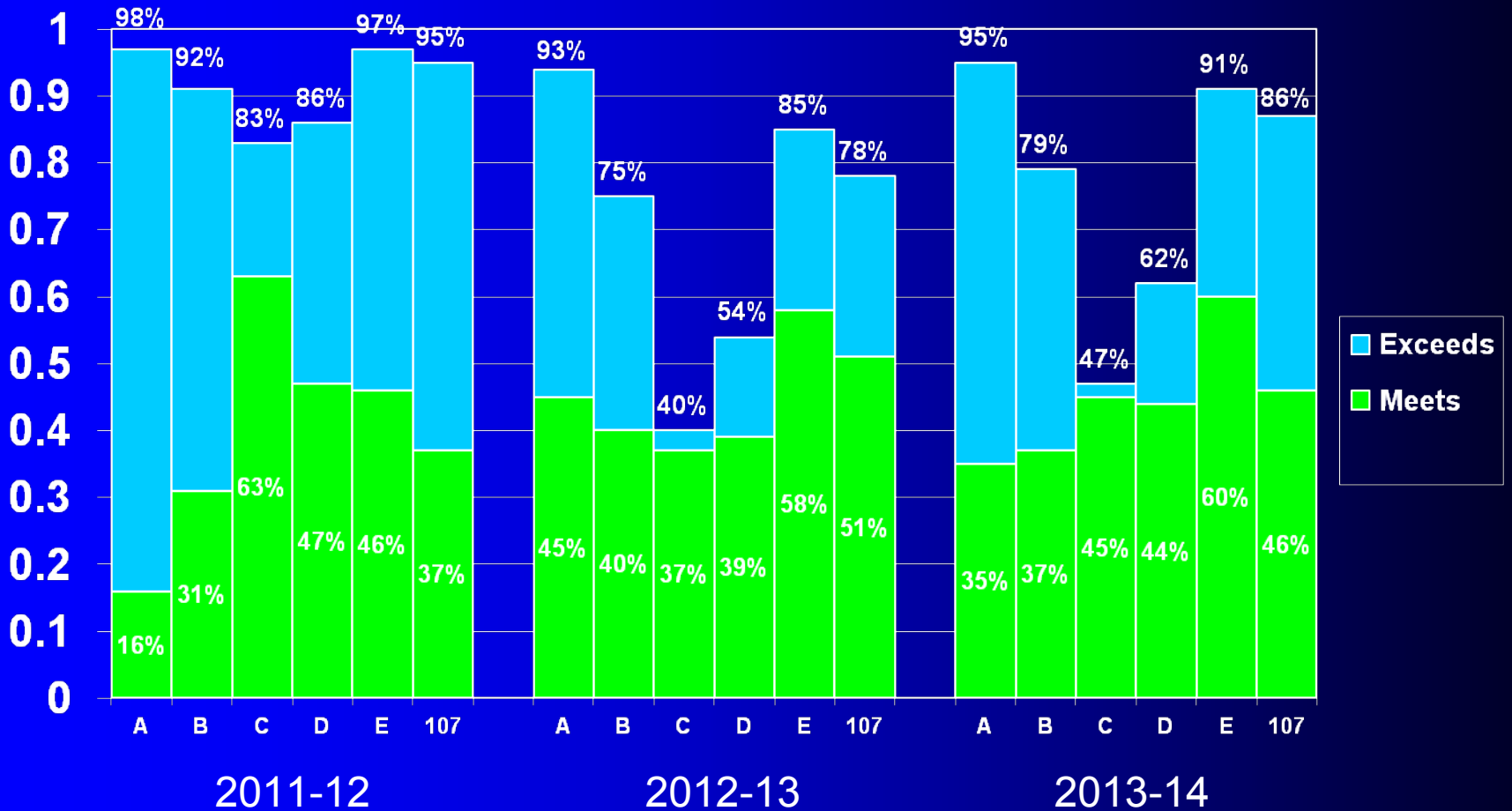
# Comparison of Lyons Township Associate Schools ISAT Scores – Meets and Exceeds % Seventh Grade Math



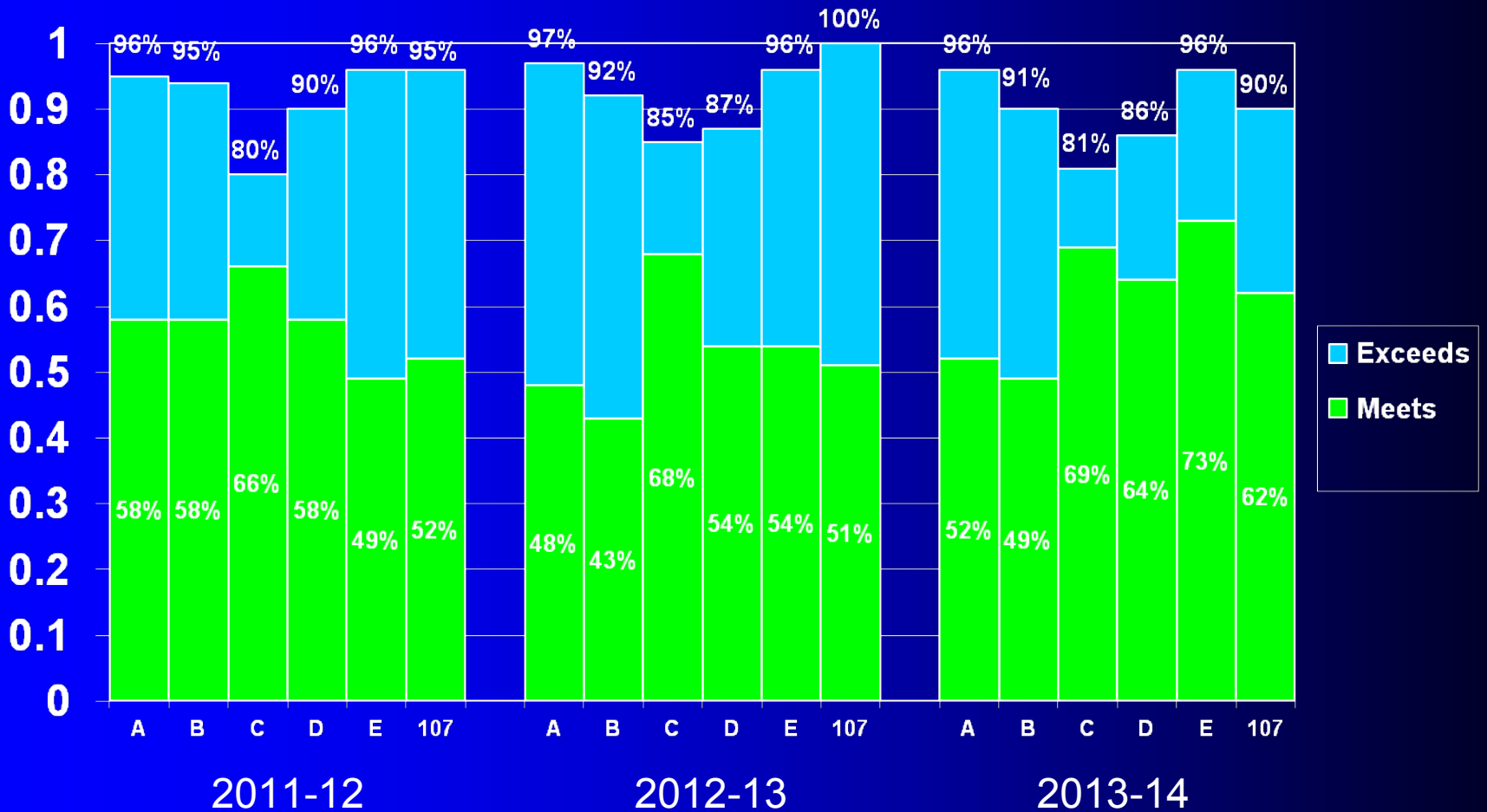
# Comparison of Lyons Township Associate Schools ISAT Scores – Meets and Exceeds % Eighth Grade Reading



# Comparison of Lyons Township Associate Schools ISAT Scores – Meets and Exceeds % Eighth Grade Math

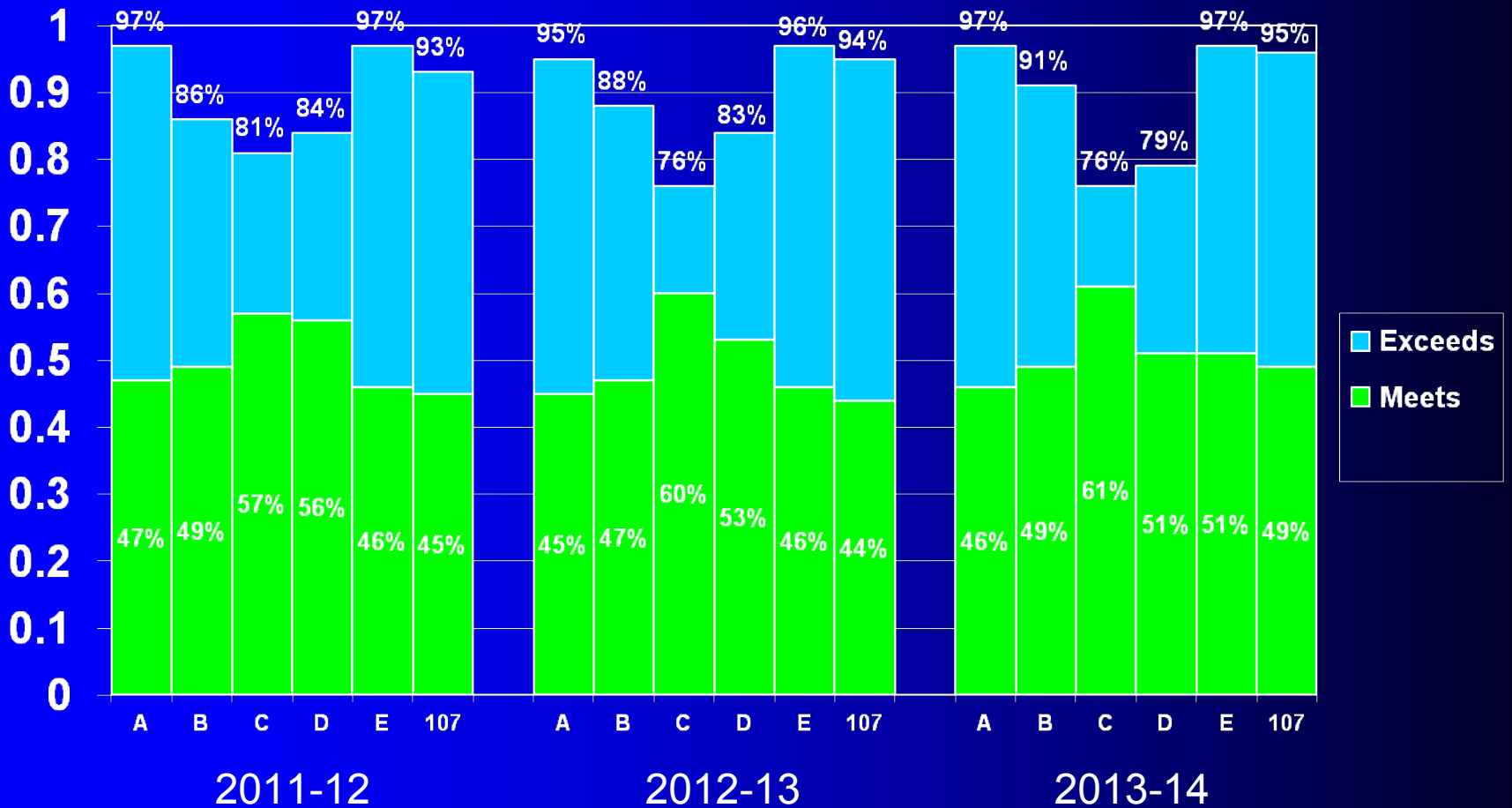


# Comparison of Lyons Township Associate Schools ISAT Scores – Meets and Exceeds % Fourth Grade Science

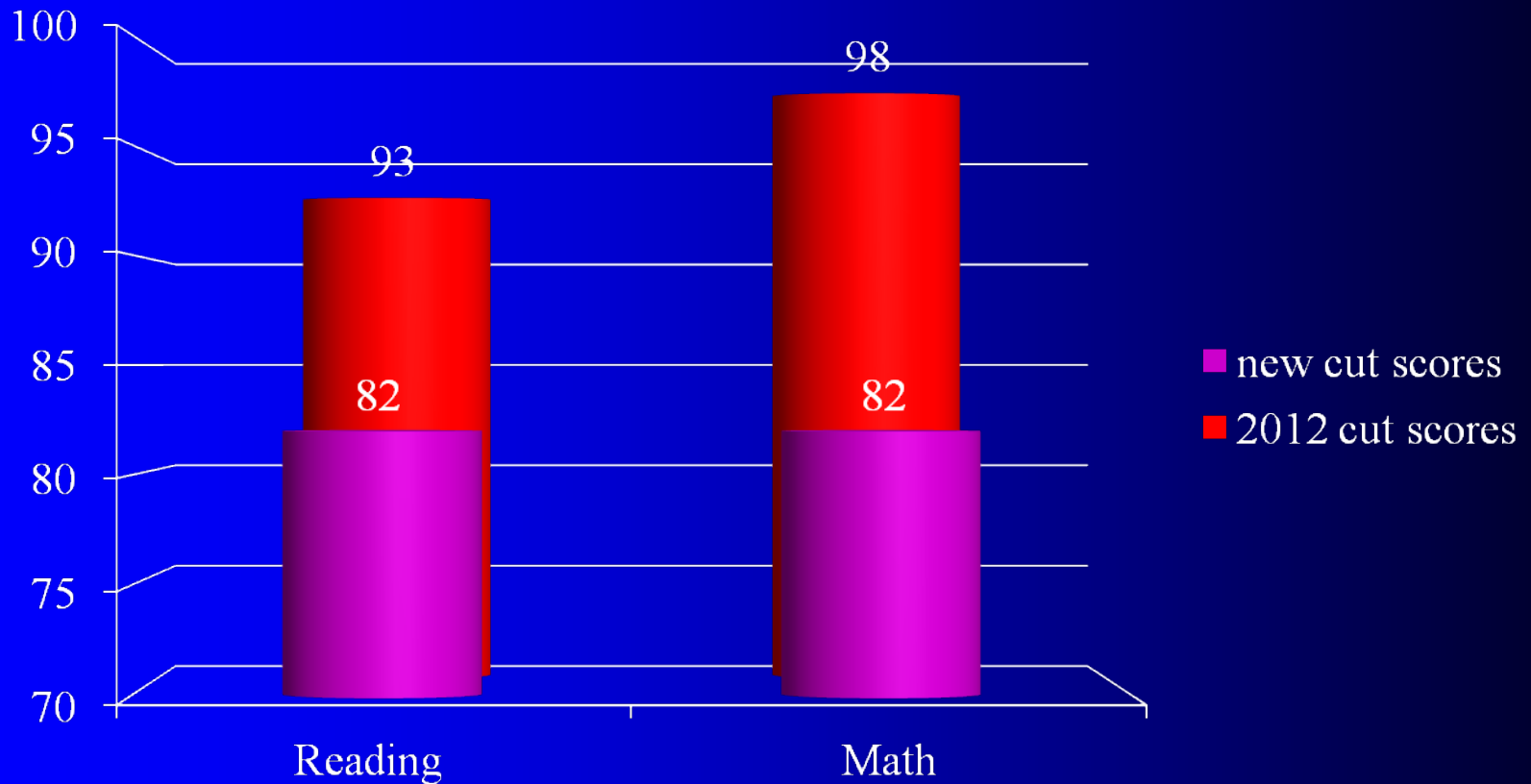




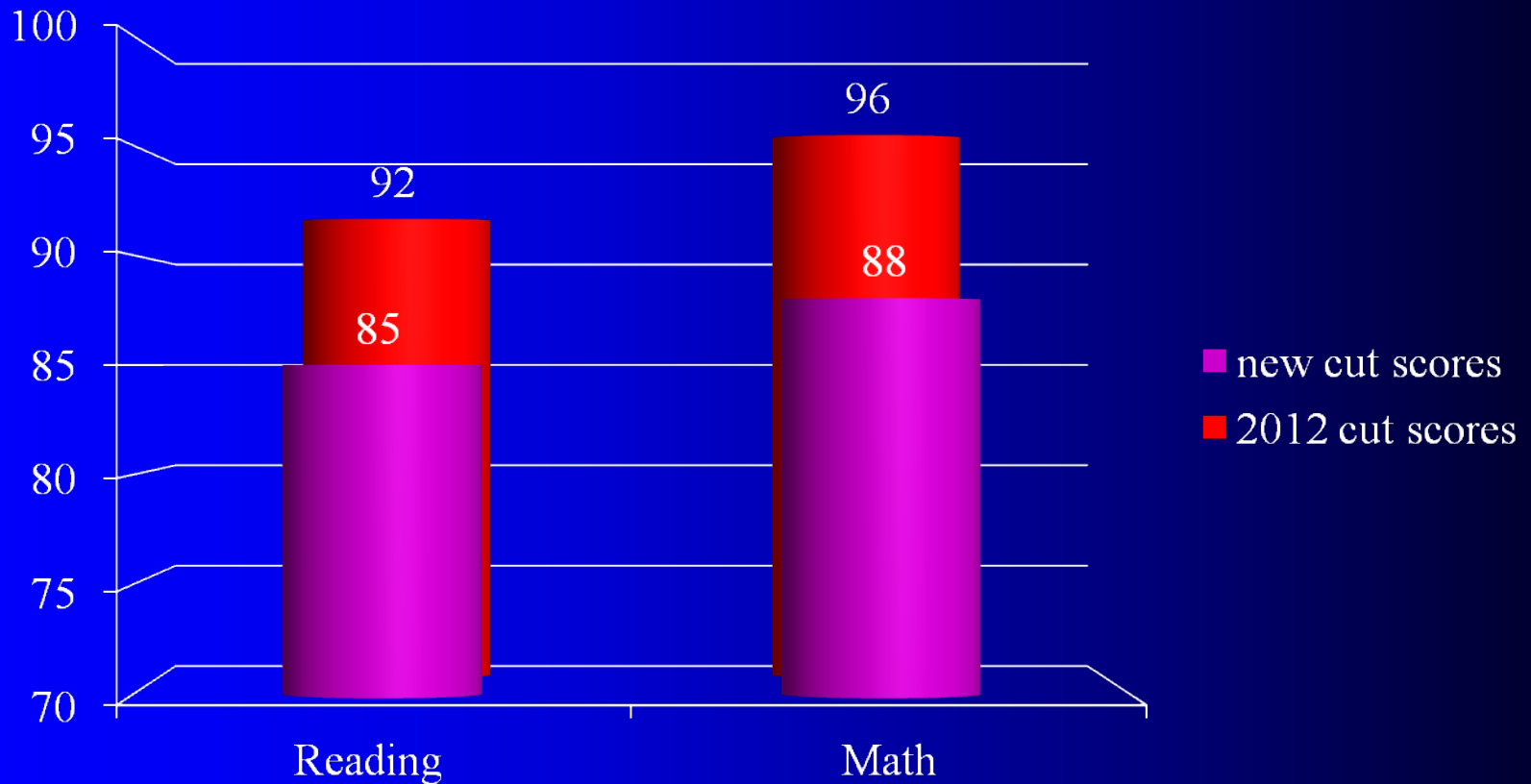
# Comparison of Lyons Township Associate Schools ISAT Scores – Meets and Exceeds % Seventh Grade Science



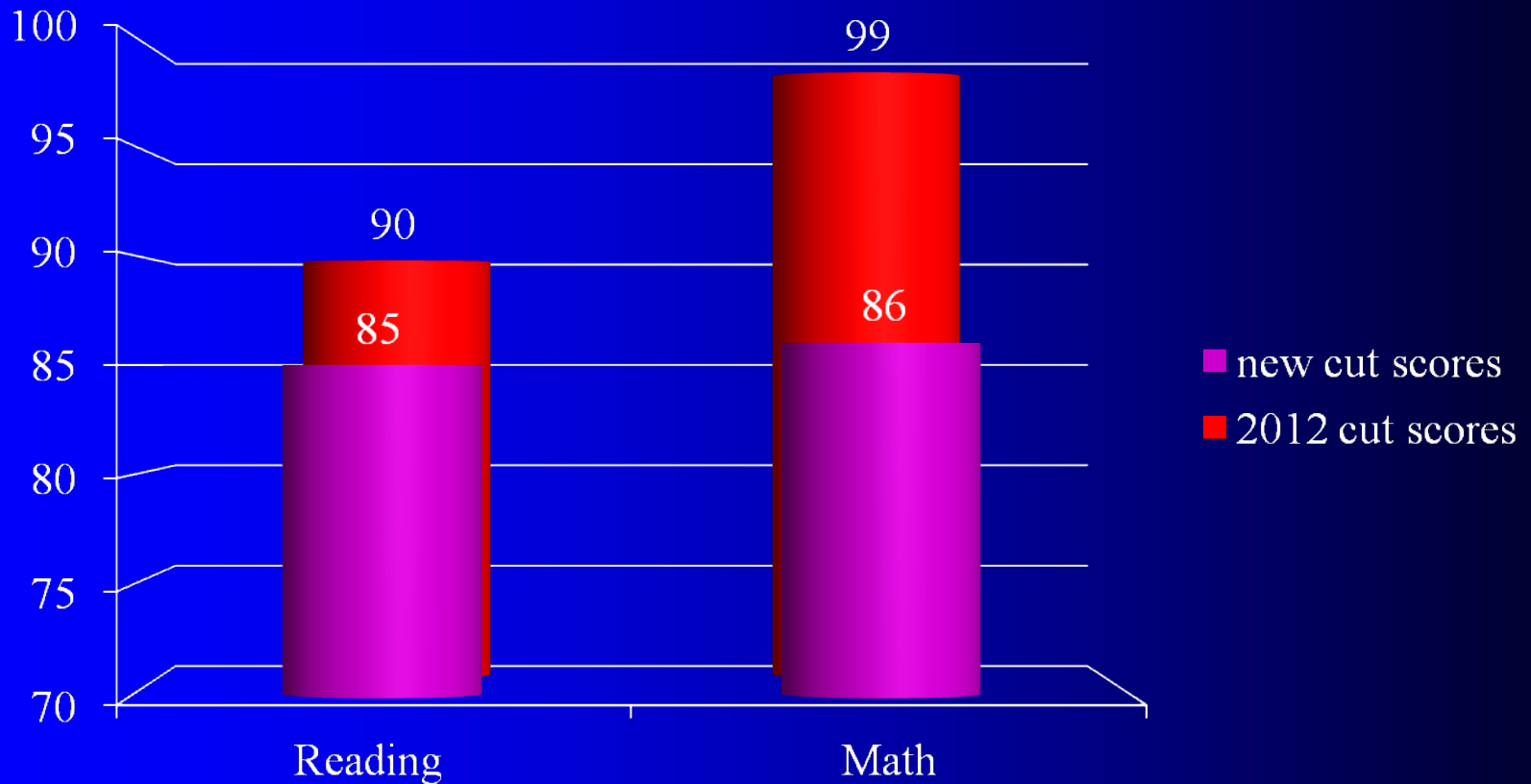
# Grade 3 percentage of meets and exceeds comparing the current cut scores and those of 2012



# Grade 4 percentage of meets and exceeds comparing the current cut scores and those of 2012



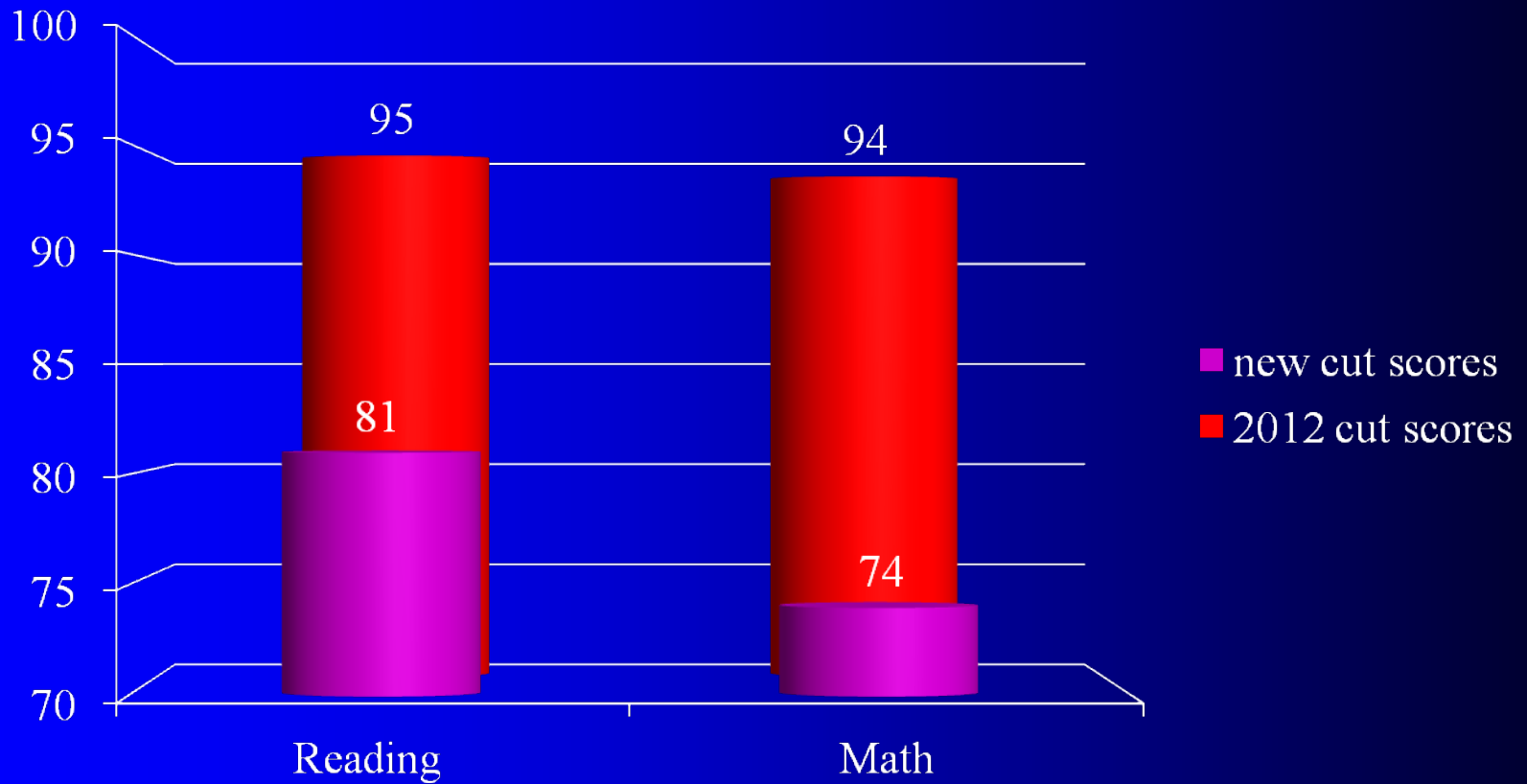
# Grade 5 percentage of meets and exceeds comparing the current cut scores and those of 2012



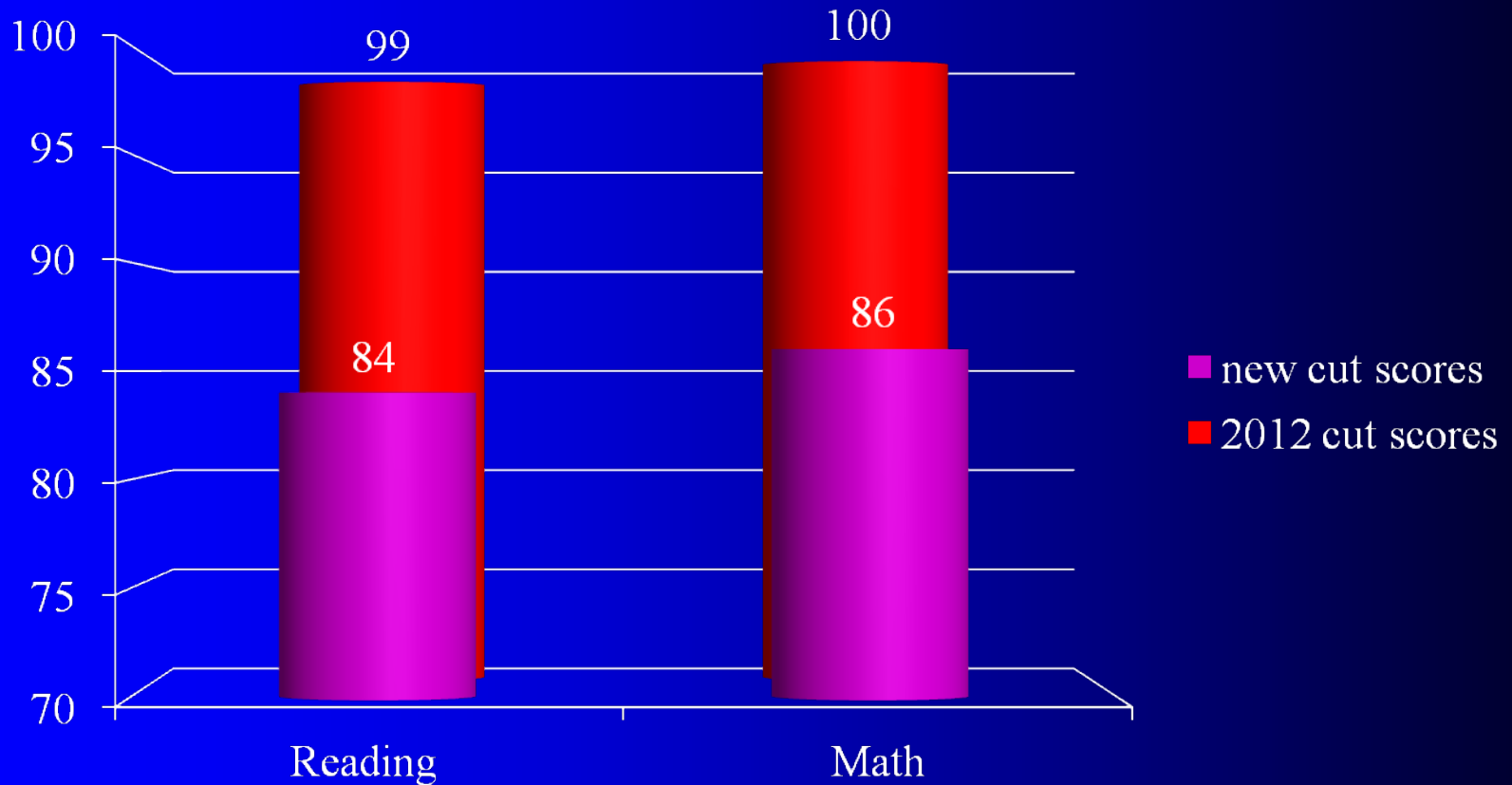
# Grade 6 percentage of meets and exceeds comparing the current cut scores and those of 2012



# Grade 7 percentage of meets and exceeds comparing the current cut scores and those of 2012



# Grade 8 percentage of meets and exceeds comparing the current cut scores and those of 2012



# Action Steps

- STAR Assessment(s) will be administered as a benchmarking tool three times per year to all students and data will be analyzed following each benchmarking period
- The STAR Assessment will be used as a progress monitoring tool for those students receiving interventions
- Continued training and support for teachers in the use of STAR report data
- Continued work with ELA and Math consultants provides consistent progress toward preparing students for the PARCC



The background is a dark blue gradient. A thin, light blue curved line starts from the top left and curves towards the center. A larger, light blue shape, resembling a quarter-circle or a sector, is positioned in the lower right quadrant, partially overlapping the curved line.

Questions?