



ENROLLMENT PROJECTION 2019-20

Independent School District 877
Buffalo-Hanover-Montrose

November 26, 2018

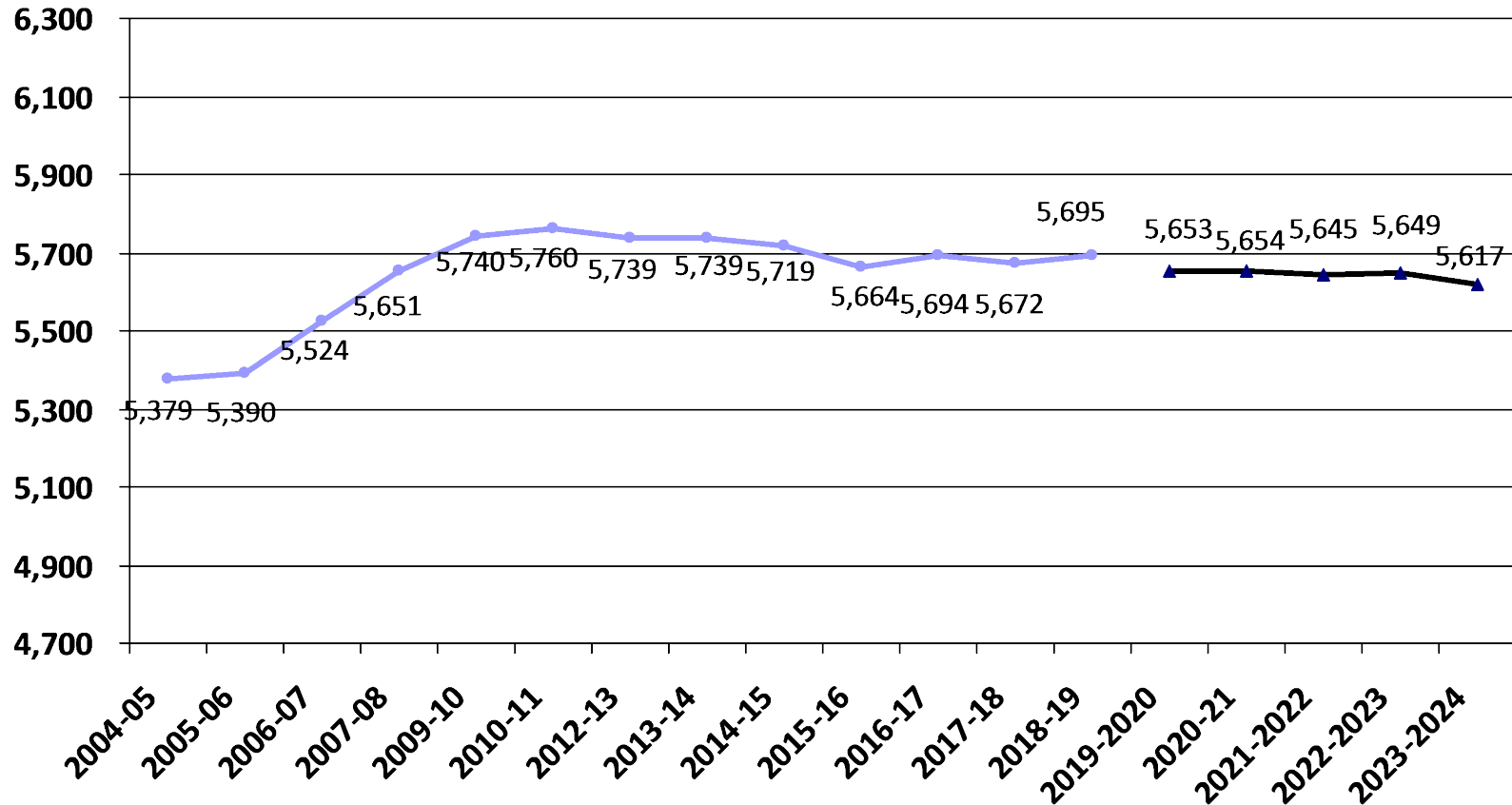


Enrollment Projection Report

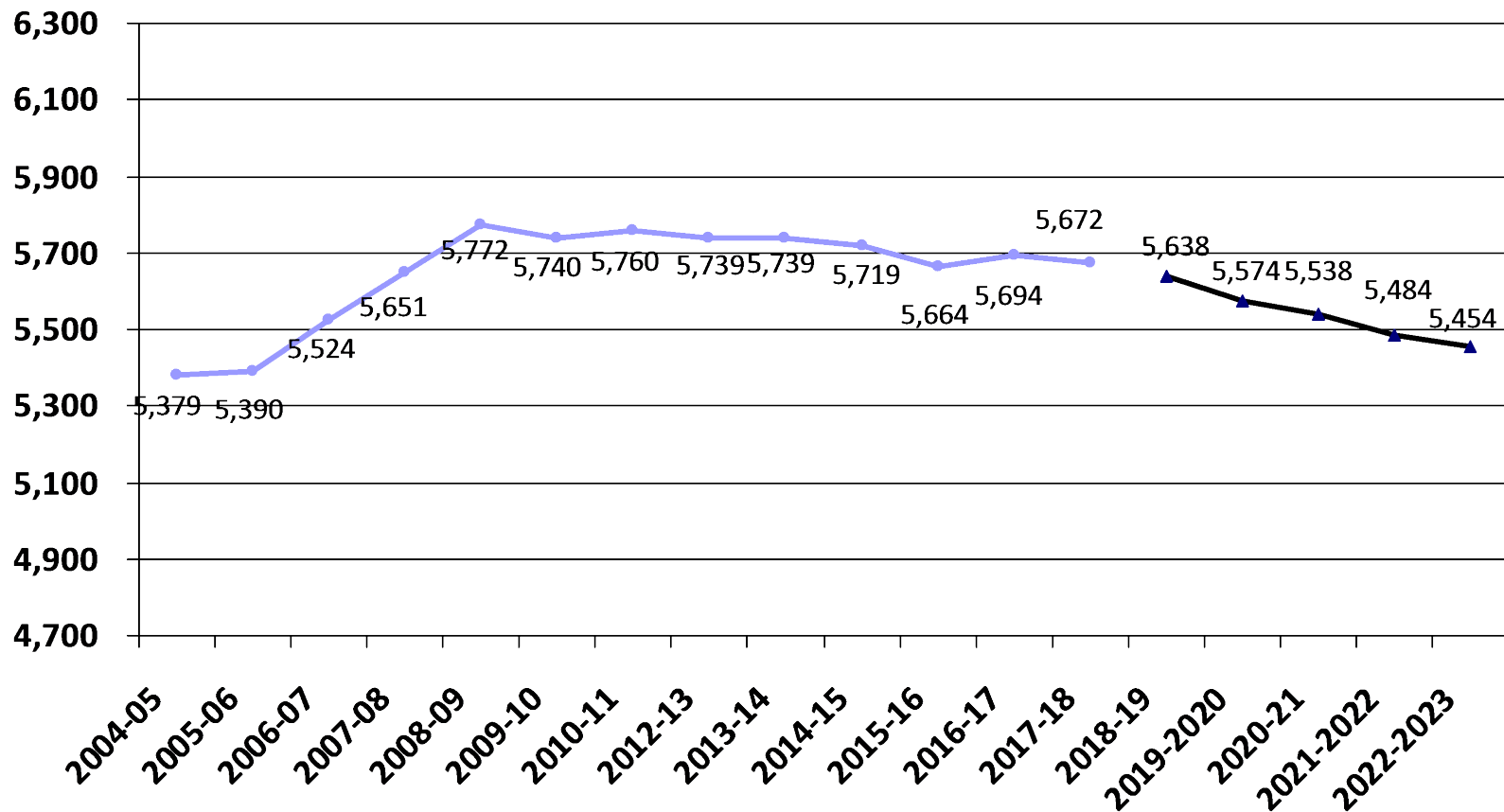
- Review of K-12 enrollment as of Oct. 1st
- Resident enrollment
- Open enrollment & tuition
- Nonpublic enrollment
- Fall vs. spring enrollment
- Review 2018-19 enrollment projection
- 2019-20 enrollment projection



Historical and 2019-20 Projected K-12 Enrollment as of Oct. 1st



Historical and 2018-19 Projected K-12 Enrollment as of Oct. 1st



Review of K-12 Enrollment as of Oct. 1st

- We are ahead of the projection for 2018-19 by 57 students.
- The five-year enrollment is a decline and currently averaging -9 students/year.
- Total enrollment decline for the past five years is -44 students or -.77%.

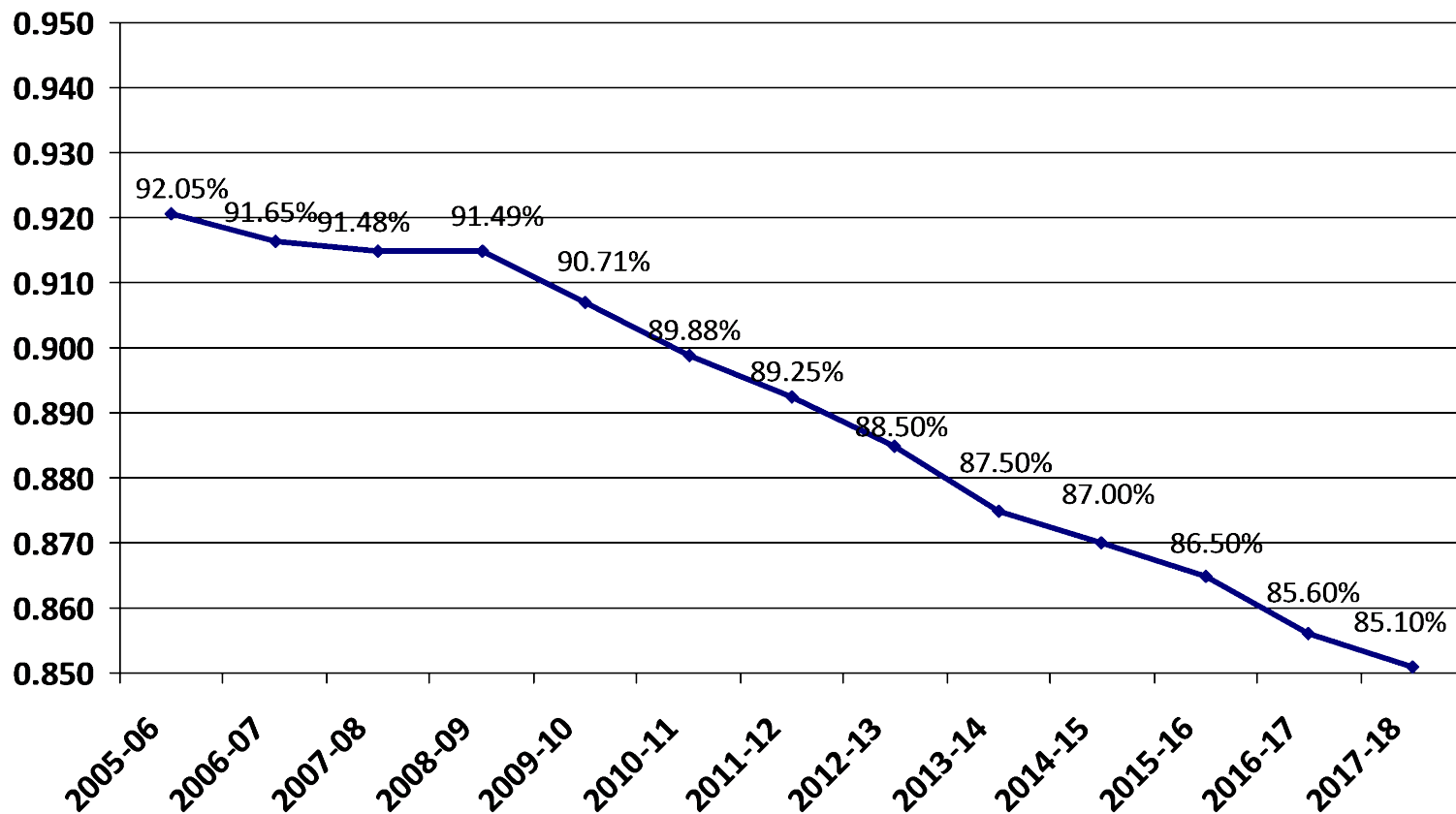
	2014-15	2015-16	2016-17	2017-18	2018-19
K-12 enrollment	5,719	5,664	5,694	5,672	5,695
Change over prior year	-20	-55	30	-22	+23
% change	-.35%	-.96%	.53%	-.39%	.41%

Total Resident Students Enrolled in ISD 877 as of June 30th

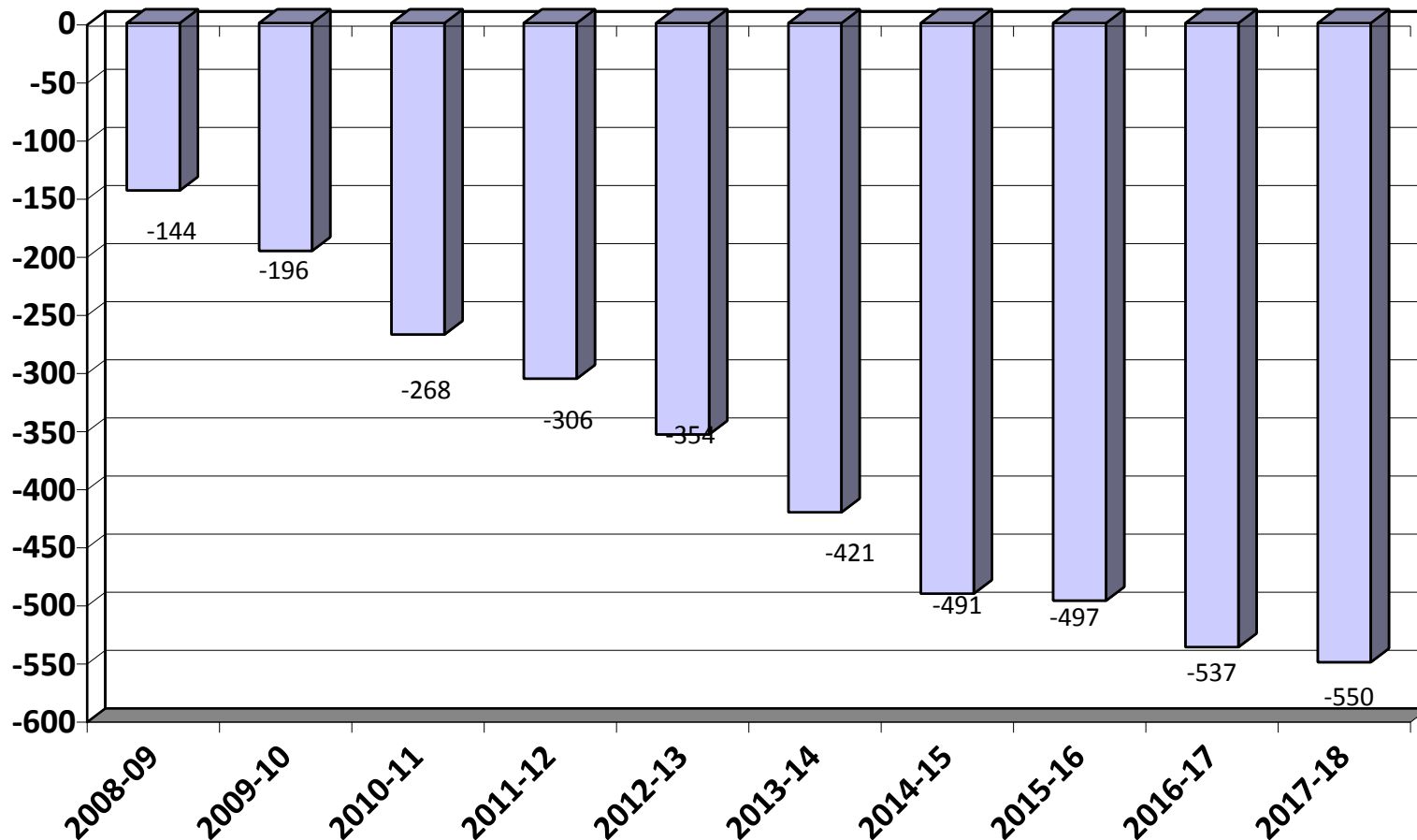
- BHM's resident population and residents served population grew this past year. Residents served was at its highest point in the last five years but still shows a decline in percentage served vs total population.

	2013-14	2014-15	2015-16	2016-17	2017-18
Residents served	5,367	5,402	5,369	5,348	5,309
Residents going elsewhere	768	810	837	902	931
Total Residents	6,135	6,212	6,206	6,250	6,240
Change over prior year	54	77	-6	44	10
% change	.89%	1.26%	-.10%	.71%	-.16%
% Served vs Total Population	87.5%	87.0%	86.5%	85.6%	85.1%

Total Resident Students Enrolled in ISD 877 as of June 30th



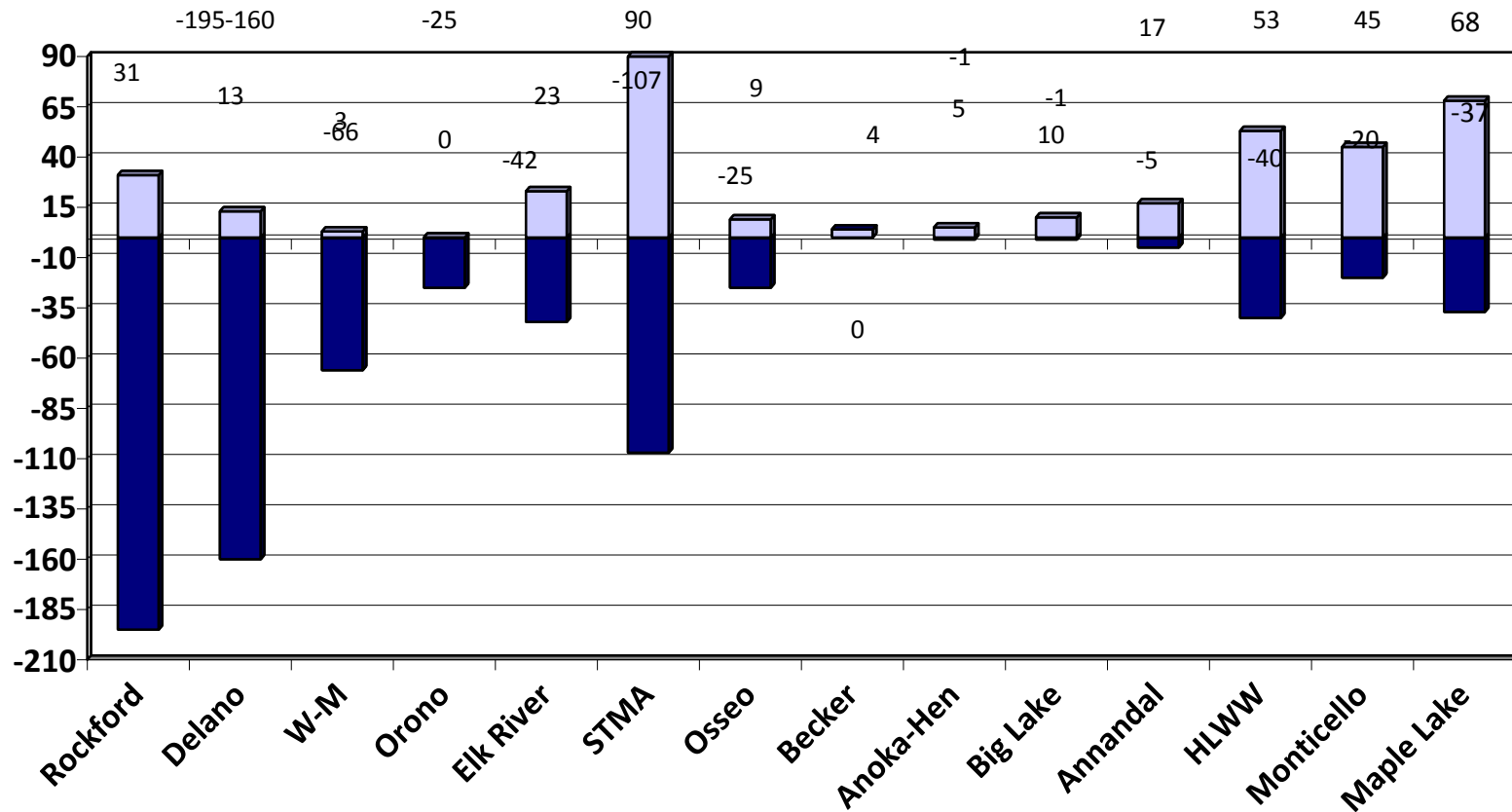
Open Enrollment & Tuition Net Gain/Loss as of June 30th



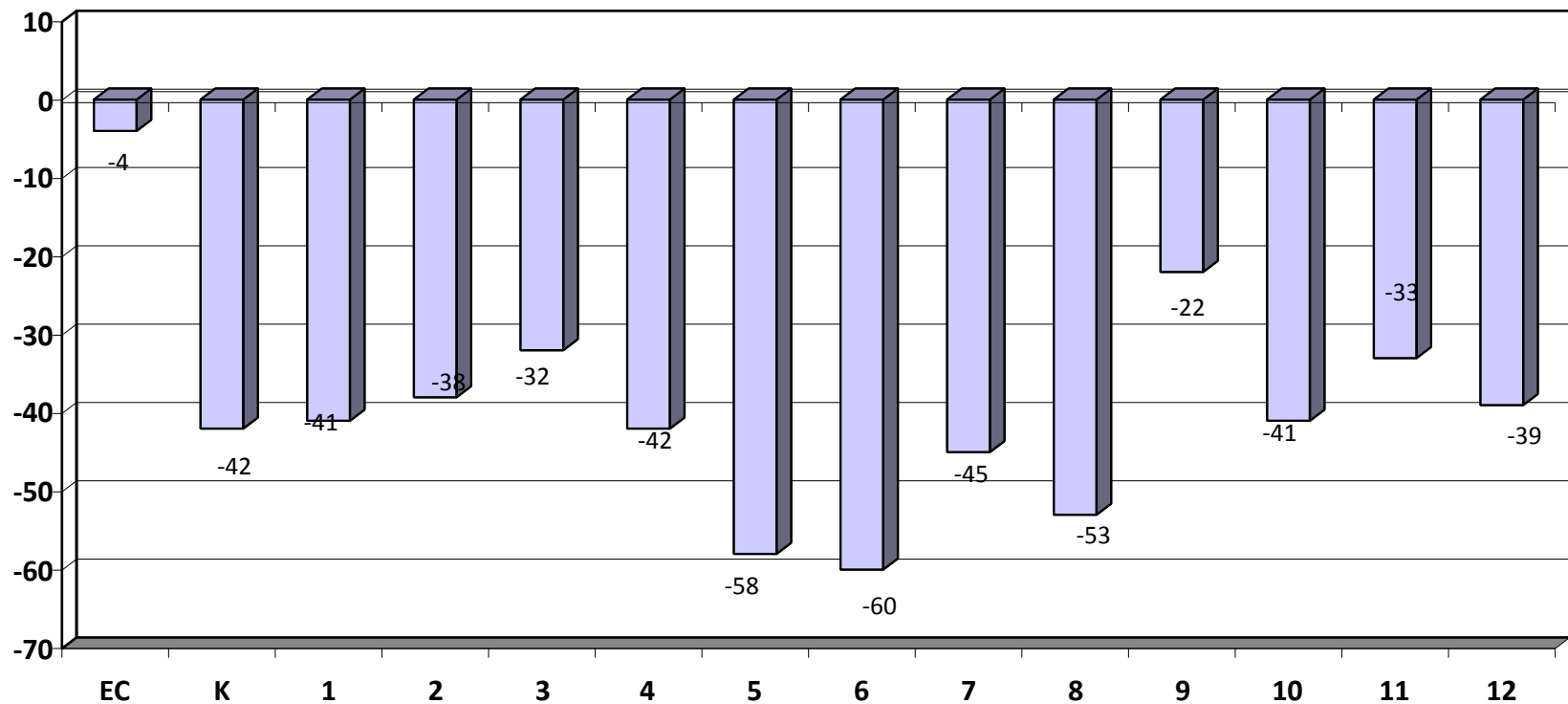
2017-18 Open Enrollment & Tuition Gain/Loss by District as of June 30th

District	In	Out	Net	Targeted Services, Tuition, Charter/Online
Rockford	31	-195	-164	
Delano	13	-160	-147	
Watertown-Mayer	3	-66	-63	WTC -29
Orono	0	-25	-25	SW Metro -24
Elk River	23	-42	-19	MAWSECO -9
St. Michael-Albertville	90	-107	-17	ISD 287 - 3
Osseo	9	-25	-16	MN Transitions -26
Becker	4	0	4	Jane Goodall -19
Anoka-Hennepin	5	-1	4	Beacon Academy -12
Big Lake	10	-1	9	Houston (online) -11
Annandale	17	-5	12	Spectrum Charter -10
Howard Lake-Waverly-Winsted	53	-40	13	Swan River Charter -10
Monticello	45	-20	25	Parnassus Prep -9
Maple Lake	68	-37	31	

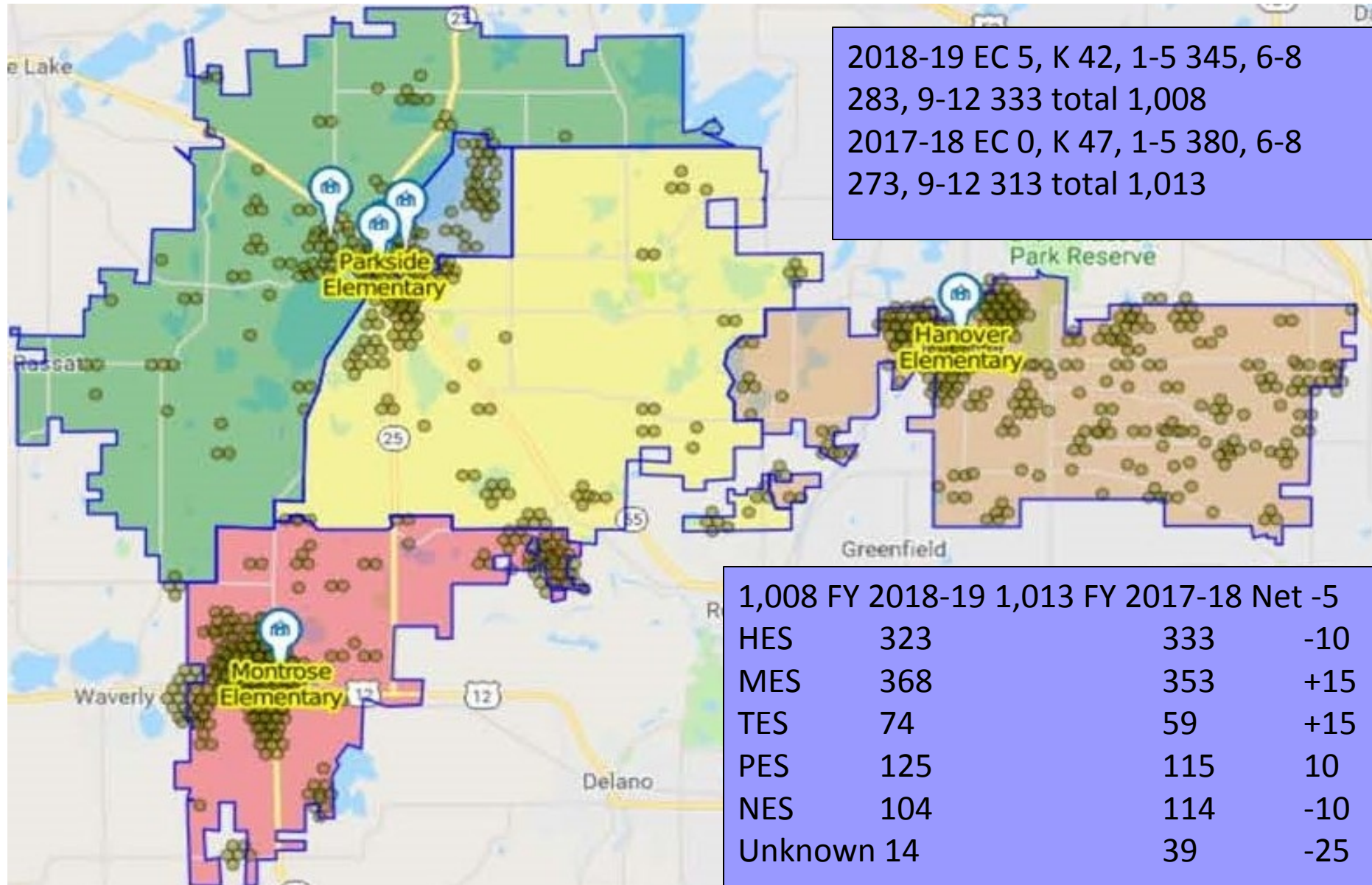
2017-18 Open Enrollment & Tuition Gain/Loss by District as of June 30th



2017-18 Open Enrollment & Tuition by Grade as of June 30th



2018-19 Resident Open Enrolled to Other Districts

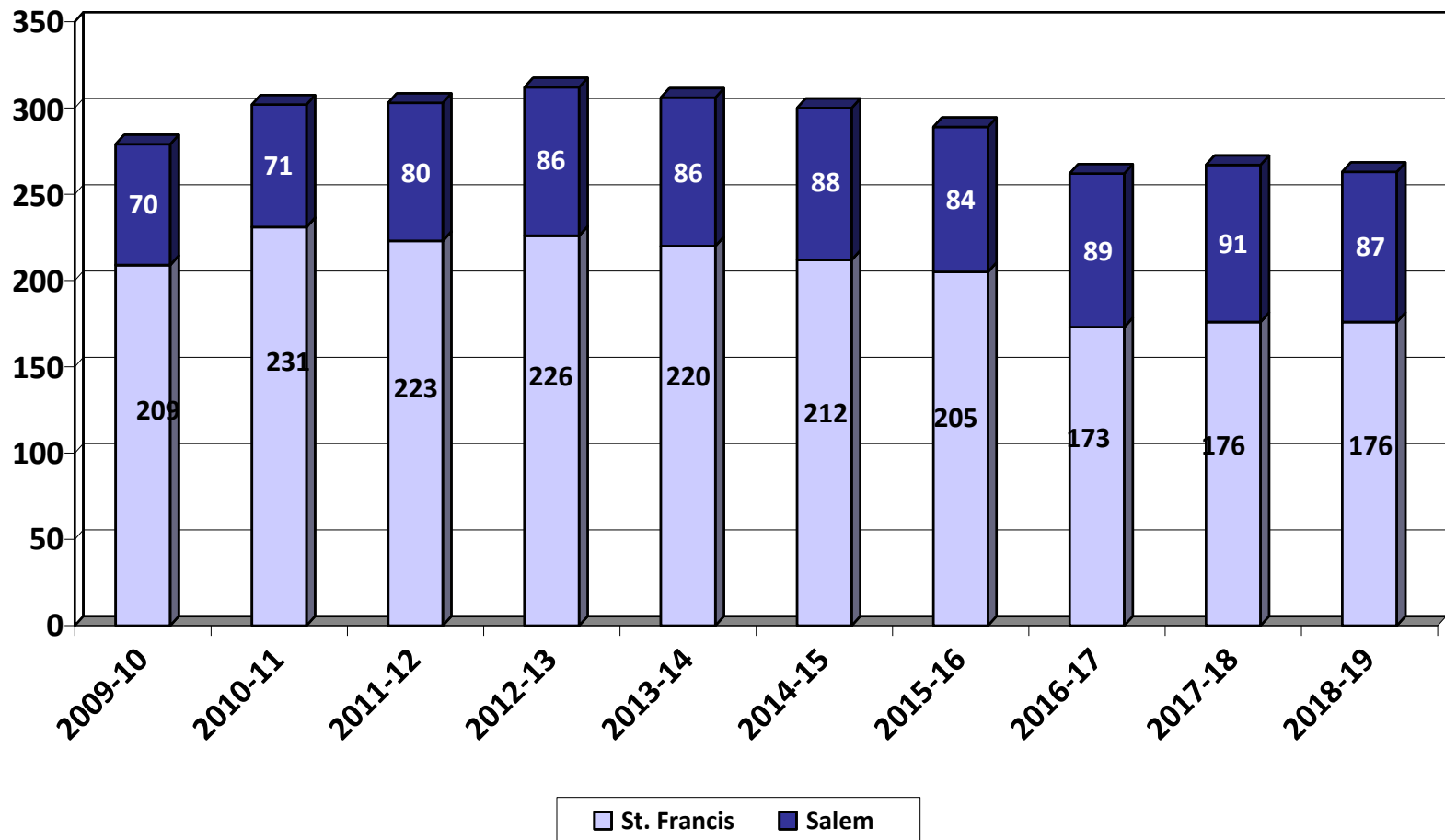


Nonpublic History

- Two nonpublic schools in the BHM district: St. Francis Xavier in Buffalo and Salem Lutheran in Greenfield.
- Both schools serve students from kindergarten through 8th grade.
- Home school totals not graphed below were 205 on 10/1/16, 184 on 10/1/17, and 206 on 10/1/18

	09-10	10-11	11-12	12-13	13-14	14-15	15-16	16-17	17-18	18-19
Salem	70	71	80	86	86	88	84	89	91	87
St. Francis	209	231	223	226	220	212	205	173	176	176
Total	279	302	303	312	306	300	289	262	267	263
# Change	4	23	1	9	-6	-6	-11	-27	5	-4
% Change	1.5%	8.2%	.33%	2.97%	-.92%	-1.96%	-3.67%	-9.34%	1.91%	-1.50%

Nonpublic History



2017-18 Enrollment

Fall vs. Spring

- Historically, the district's K-12 enrollment decreases from October 1 to June 1.
- Most of the enrollment drops happen in grades 9-12.

	Oct. 1 st , 2017	Jun. 1 st , 2018	Net
K	413	414	1
Gr. 1-5	2,048	2,062	14
Gr. 6-8	1,354	1,343	-11
Gr. 9-12	1,857	1,750	-107
Total	5,672	5,569	-103

Historical Enrollment

Fall vs. Spring

- The district had one flat year (2006-07) of enrollment growth. All other years have declined during the year.

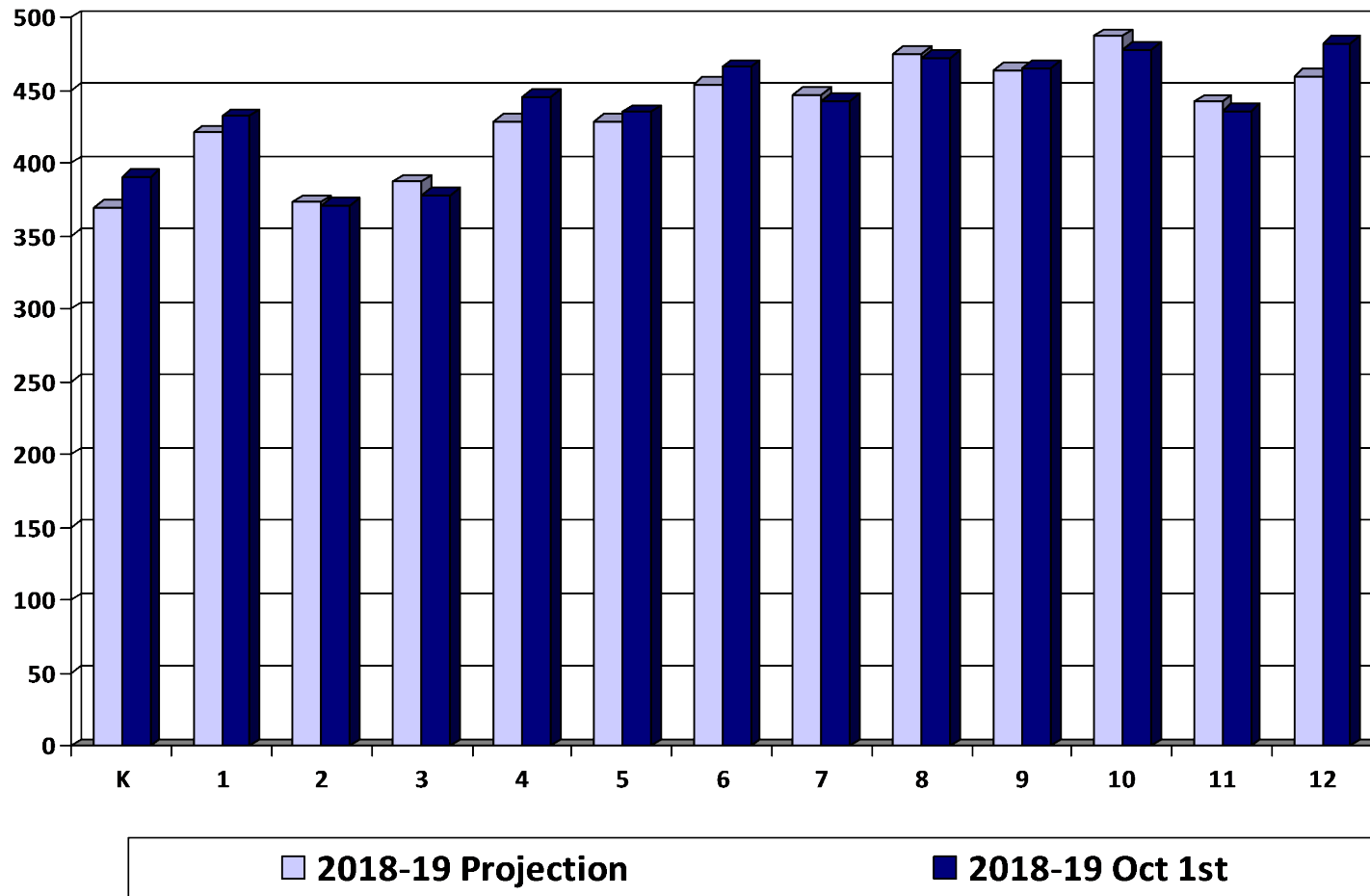
	K	Gr. 1-5	Gr. 6-8	Gr. 9-12	Net
2007-08	9	3	3	-55	-40
2008-09	0	0	-24	-84	-108
2009-10	-2	14	-17	-58	-63
2010-11	1	-11	-10	-63	-83
2011-12	-10	-11	-14	-94	-129
2012-13	-2	-14	1	-86	-101
2013-14	2	-7	2	-127	-130
2014-15	-10	6	-8	-89	-101
2015-16	7	39	-1	-99	-54
2016-17	3	-16	10	-110	-113
2017-18	1	14	-11	-107	-103

Review of 2018-19 Enrollment Projection

- Last year's enrollment projection was under-estimated by 57 students.
- Our internal monthly enrollment reports adjust down post-secondary and shared time students.
- The official Oct. 1st MARSS submission by MDE will report a higher enrollment with post-secondary and shared time students.

	2018-19 Projection	2018-19 Oct. 1st	Difference
K	370	391	21
Gr. 1-5	2,039	2,062	23
Gr. 6-8	1,376	1,381	5
Gr. 9-12	1,853	1,861	8
Total	5,638	5,695	57

Review of 2018-19 Enrollment Projection by Grade



Enrollment Projection Data

- The district uses the Schoolfinances.com enrollment projection model.
- The model allows schools to develop enrollment projections based on three different sets of data:
 - ☐ **October 1st MARSS submission**
 - ☐ **End of Year ADM** is generally used for financial forecast
 - ☐ **District Data** allows schools to enter enrollment history taken at any time, resident ADM or any other historical data by grade



Kindergarten Projection Methods

- **Hold constant** maintains the 2018-19 kindergarten level.
- **Linear projection** is a straightforward mathematical projection based on nothing more than the past five years of data.
- **County birth method** uses the total number of live births in Wright County and examines what percentage of those births enroll in kindergarten. The projection is based on the average percentage of the last four years.
- **Zip code method** examines the zip codes in the district and uses a linear projection of live births on the last four years of data and computes the projected enrollment based on the lowest, average, and highest ratios.
- **District-determined method** examines county birth rates in Wright County and compares that to actual student enrollment numbers in the District and projects that percentage for the next five years.

Kindergarten Projection Methods

Birth Year	Kdgn Enroll Year	Wright Co. Births	Actual Kdgn Enrollment	% of Wright Co. Births Enrolled
2007	2012	2,183	433	19.8%
2008	2013	2,095	378	18.0%
2009	2014	1,943	417	21.5%
2010	2015	1,900	370	19.5%
2011	2016	1861	358	19.2%
2012	2017	1830	413	22.6%
2013	2018	1787	391	21.9%
2014	2019	1799	399*	22.2%*
2015	2020	1764	392*	22.2%*
2016	2021	1785	396*	22.2%*
2017	2022	1758	390*	22.2%*

* Projected K enrollment based on County births-2-year average

Kindergarten Projection Methods

■ Using Oct. 1st district data

	14-15	15-16	16-17	17-18	18-19	19-20	20-21	21-22	22-23	23-24
Actual enrollment	417	370	358	413	391					
Hold constant						391	391	391	391	391
Linear projection						377	372	367	362	358
Wright Co. Ave. births						373	370	371	368	365
Zip code method - Low						340	318	319	322	318
District Determined Method						399	392	396	390	388

Enrollment Projection Methods

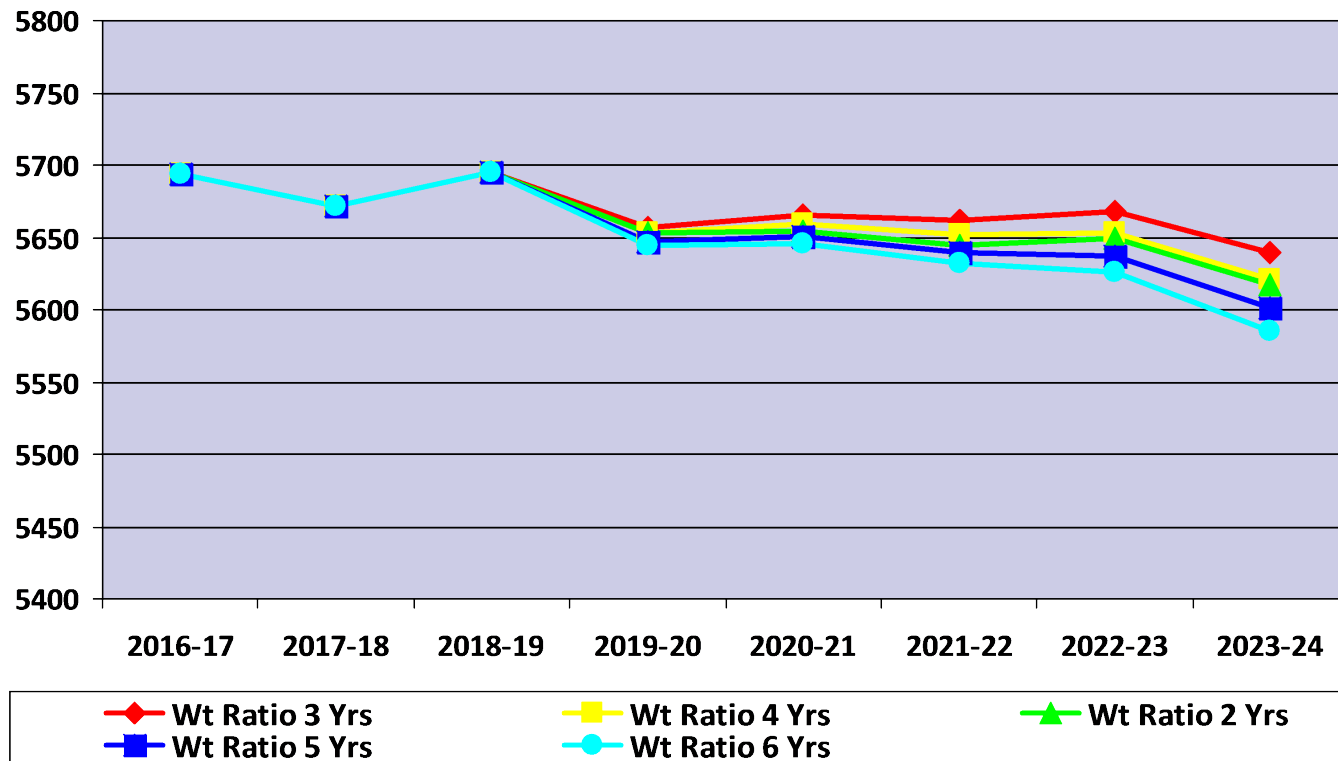
- After the kindergarten enrollment projection is complete, the overall K-12 enrollment is determined by a variety of methods:
 - ☐ Cohort Survival Method
 - ☐ Weighted Cohort Survival Method
 - ☐ Numerical Survival Method
 - ☐ Weighted Numerical Survival Method
 - ☐ Merged Method

Projection Methods Comparison

- Using Oct. 1st district data, eighteen different variations were examined.
- The following five were selected for detailed analysis:

	16-17	17-18	18-19	19-20	20-21	21-22	22-23	23-24
Wt Ratio 3 Years	5,694	5,672	5,695	5,657	5,666	5,662	5,668	5,639
Wt Ratio 4 Years	5,694	5,672	5,695	5,653	5,659	5,652	5,653	5,621
Wt Ratio 2 Years	5,694	5,672	5,695	5,653	5,654	5,645	5,649	5,617
Wt Ratio 5 Years	5,694	5,672	5,695	5,647	5,651	5,640	5,637	5,601
Wt Ratio 6 Years	5,694	5,672	5,695	5,645	5,646	5,632	5,626	5,585
Max Difference				12	20	30	42	54

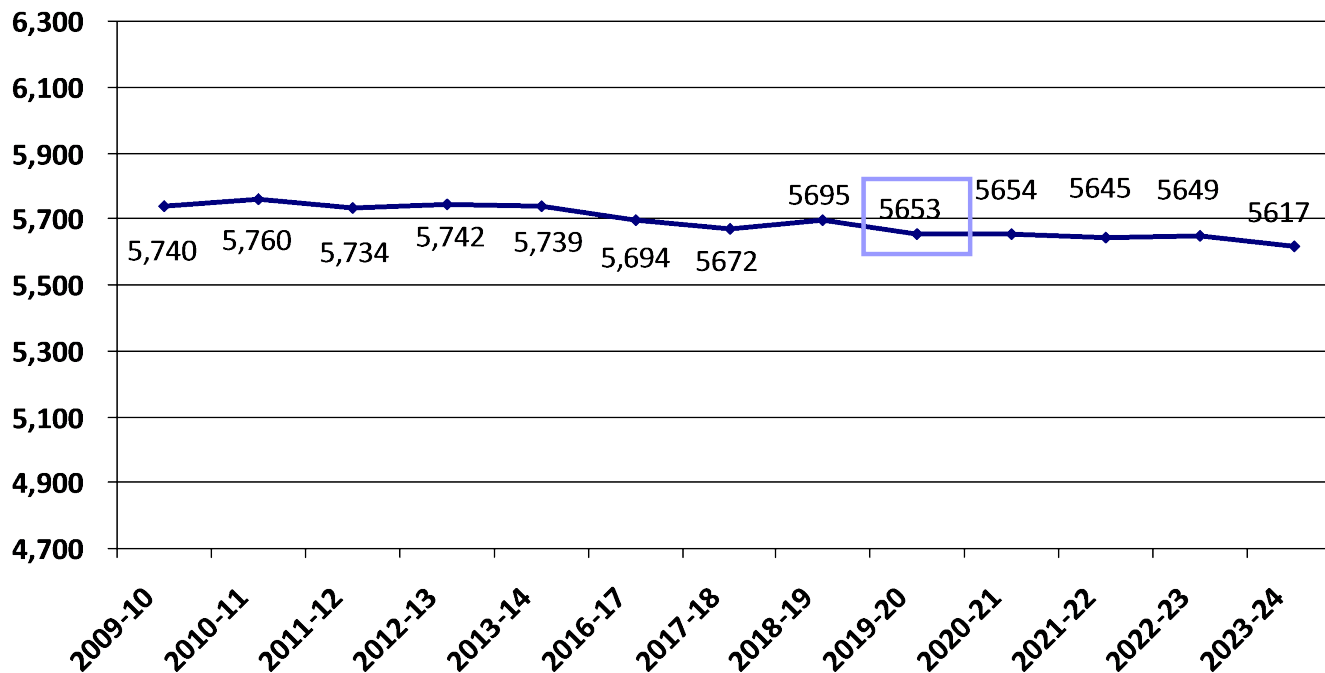
Projection Methods Comparison



2019-20 Enrollment Projection

- Factors considered: housing market, economic conditions, Wright County births, and open enrollment
 - 45 2018 Buffalo single family dwelling permits issued - 41 for 2017
 - 10 2018 Hanover single family dwelling permits issued - 6 for 2017
 - 2018 Montrose not available – 39 for 2017
- 2-year kindergarten attendance average 22.2%
- Weighted ratio 2 years
- K-12 Enrollment 5,653
- Decrease of 42 students or 0.7%

2019-20 Enrollment Projection

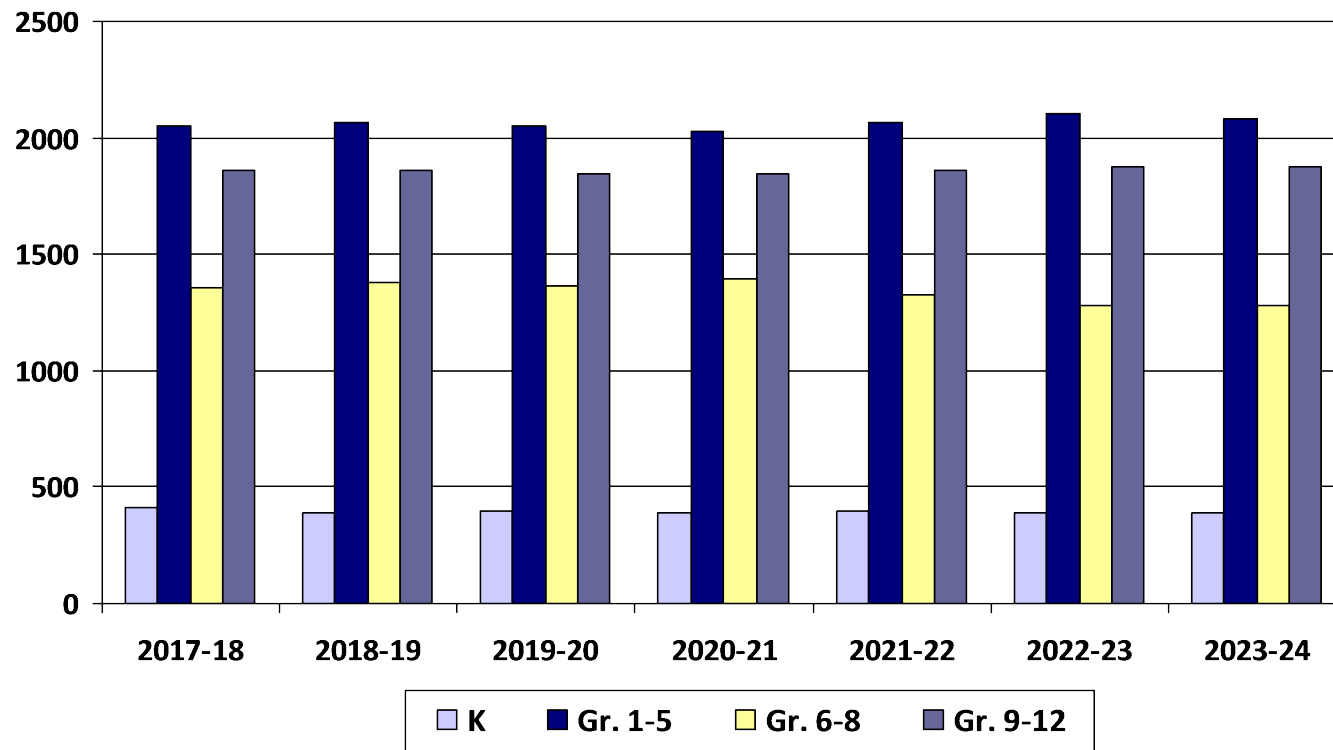


2019-20 Enrollment Projection by Grade Groupings

- With future enrollments, need to consider building capacity:
 - BHS – 1,935, PHX – 64 and PRIDE – 25
 - BCMS – 1,425
 - Elementary – 3,300

	2018-19	2019-20	2020-21	2021-22	2022-23	2023-24
K	391	399	392	396	390	388
Gr. 1-5	2,062	2,051	2,028	2,062	2,104	2,077
Gr. 6-8	1,381	1,362	1,393	1,330	1,281	1,277
Gr. 9-12	1,861	1,841	1,842	1,857	1,873	1,875
Total	5,695	5,653	5,655	5,645	5,648	5,617
	23	-42	2	-10	3	-31
	.41%	-.73%	-.04%	-.18%	-.05%	-.55%

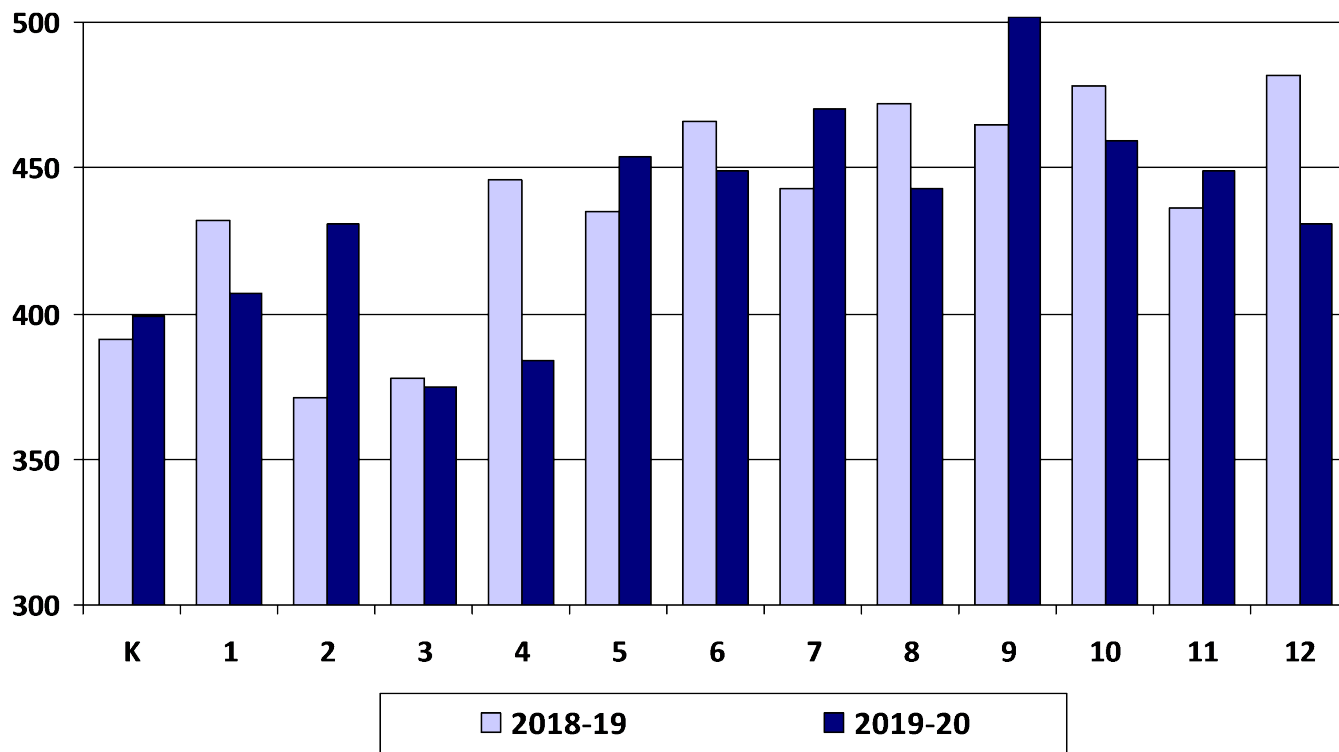
2019-20 Enrollment Projection by Grade Groupings



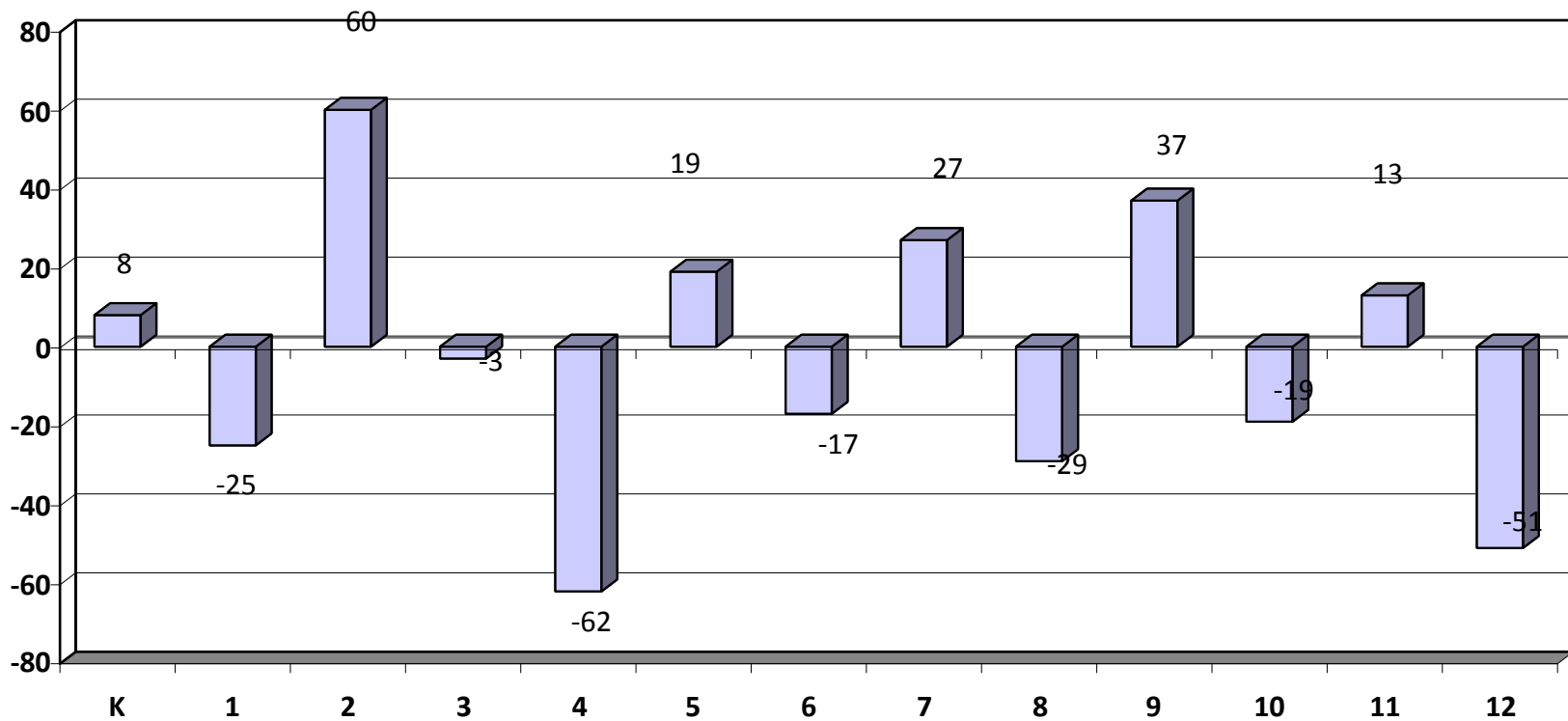
2019-20 Enrollment Projection by Grade

	2018-19	2019-20	2020-21	2021-22	2022-2023	2023-24
K	391	399	392	396	390	388
1	432	407	415	408	412	406
2	371	431	406	414	407	411
3	378	375	436	410	419	411
4	446	384	381	442	416	425
5	435	454	391	388	450	424
6	466	449	469	404	401	465
7	443	470	453	473	407	404
8	472	443	470	453	474	407
9	465	502	472	501	483	504
10	478	459	496	465	494	476
11	436	449	431	465	437	464
12	482	431	444	426	460	432
Total	5,695	5,653	5,654	5,645	5,649	5,617

2018-19 Actual vs. 2019-20 Enrollment Projection by Grade



2019-20 Enrollment Change by Grade



WADM Report

- The weighted average daily membership (WADM) projection shows a decline in student aid.
- Keep in mind the district's enrollment history also tends to decline from Oct. 1st to June 1st.

	2019-20		2020-21		2021-22		2022-23	
	Enroll	WADM	Enroll	WADM	Enroll	WADM	Enroll	WADM
HK	53	53	52	52	52	52	52	52
K	399	399	392	392	396	396	390	390
Gr. 1-3	1,213	1,213	1,257	1,257	1,232	1,232	1,238	1,238
Gr. 4-6	1,287	1,287	1,241	1,241	1,234	1,234	1,267	1,267
Gr. 7-8	913	1,096	923	1,108	927	1,112	881	1,057
Gr. 9-12	1,841	2,209	1,842	2,210	1,857	2,228	1,873	2,248
ECSE	99	99	97	97	98	98	97	97
MCPU		12		0		1		2
Total	5,805	6,368	5,804	6,357	5,796	6,354	5,797	6,350

Conclusion

- Uncertain economic factors make enrollment projections difficult.
- BHM's enrollment is projected to decline slightly over the next three to five years.



5,653