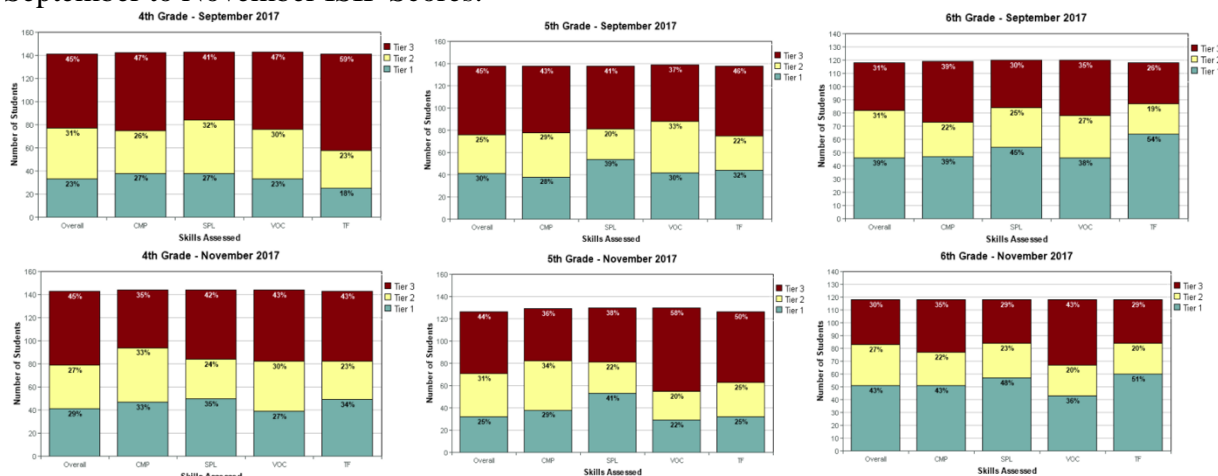


Napi Elementary Board Report December 2017

September to November ISIP Scores:



November STAR Math Scores:

- 4th---100% of the 4th Grade increased! Grade level average scores was 541.
- 5th--5 out of 7 5th grade classes increased their STAR classroom averages! Classroom averages were 557.
- 6th--5 out of 6 6th grade classes increased their STAR classroom averages! Classroom averages were 621.

In November we hosted both our ELA and Math consultants (ELA- Lynda Collins & Math-Mary Buck) for one day each.

ELA:

Mrs. Lynda Collins conducted walkthroughs to determine our progress implementing the Wonders reading program. She was please with our progress and we will begin the next steps of continuing to monitor implementation of the reading framework. She provided professional development on Phonological and Phonemic Awareness in order to help teachers understand the progression of literacy. Napi teachers are moving into phase 2 of the Wonders implementation plan involving small group instruction. This is a new style of instruction for our district. Teachers received an introductory professional development of small group instruction in order to begin. Another indepth professional development of small group instruction will be held this month. Research indicates that this type of instruction provides students with targeted prescriptive instruction that increases student achievement. Although this is new to Napi teachers, they are diligent and determined to take on the challenge of delivering strong small group instruction. Through walkthrough data and ISIP data were able to determine areas of support that coaches and administrators will need to put in place in order to complete the Wonders Program implementation.

Math:

Our Math consultant provided PD during an extended day on math fluency. With her guidance, three distinctly different versions of a 2nd through 6th grade assessment based on the fluency standards were created.

Ms. Buck stated in her Site Visit Report, that there is strong support by the Administrative Staff and Instructional Coaches. Teachers were very receptive to suggestions made by the math consultant. Teachers began construction of operations anchor charts to be posted with the expectations that they be displayed in all classrooms by the next visit. Students were receptive to having the math consultant help them with math questions. Napi teachers are beginning to implement small group instruction during math intervention block. Teachers will use the fluency assessment in order to plan and deliver targeted and prescriptive small group instruction.

Culture: Teachers have included cultural components into lessons during social studies and authentic literacy block. This is to encourage cultural identity throughout the Napi school. Staff have designated every Thursday as Ribbon Skirt and Shirt Day and are encouraging students to wear them as well. Our goal is to have a Family Literacy and Math night where students and families can make ribbon skirts and shirts.

November Activities:

1st---Toys for Tots Referrals started

9th--Picture Day

7th & 9th---Parent Teacher Conferences

- Ms. Momberg, Ms. Sangray, and Ms. Gilroy, and Mr. Stone had 100% attendance!

14th--Participated in Emergency Drill with Vina Chattin and K.W.

14th--Completed the 6th grade boys basketball season.

17th--Cat vs. Griz, food drive and badge fundraising for FIT.

30th--All Non-Tenure evaluations were submitted.

December Activities:

1st---Tenure observations & evaluations begin

1st---Perfect Attendance Committee began fundraiser for Christmas Dinner baskets.

6th--WIDA Testing Started

13th--Picture Retakes

14th--Family Literacy/Math Night from 4:00--5:00

14th-18th--Gym closed for decorating and painting

19th---Christmas Recitals: 4th @ 9:00/5th @ 10:15/6th @ 11:15

21st---Staff vs. Students activities

November Attendance Data

Perfect Attendance---57
Monthly Attendance for Grade Levels---4 th —89%; 5 th —85%; 6 th —84% Whole School Attendance----87%
Home Visits--7
10 Day Drop Students--3 Court Referred Cases---40
Certified Staff Attendance---83%
Classified Staff Attendance---87%
Staff Perfect Attendance--2

November Behavior

Monthly Referral Count	4th--15 5th--17 6th--31 Total: 63
Students OSS	7 students went out on OSS
Referral Locations	Classroom--36 School Bus--5 Playground--3 Cafeteria--4 Library--1 Hallways--7 Gym--5 Restroom--1 Other--1 Total--63
Referral Incidents	1200 Attendance Policy--3 1500 Disorderly Conduct--5 2200 Insubordination--31 2400 Obscene Behavior--1 2900 Other sexual offenses--3 2500 Physical Altercation(minor)--7 3200 Threat/Intimidation--9 3500 Vandalism--1 1600 Drugs--1 13 Other Firearms--1 20 Knife, Blade 2.5", or greater--1