

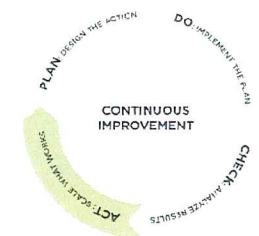
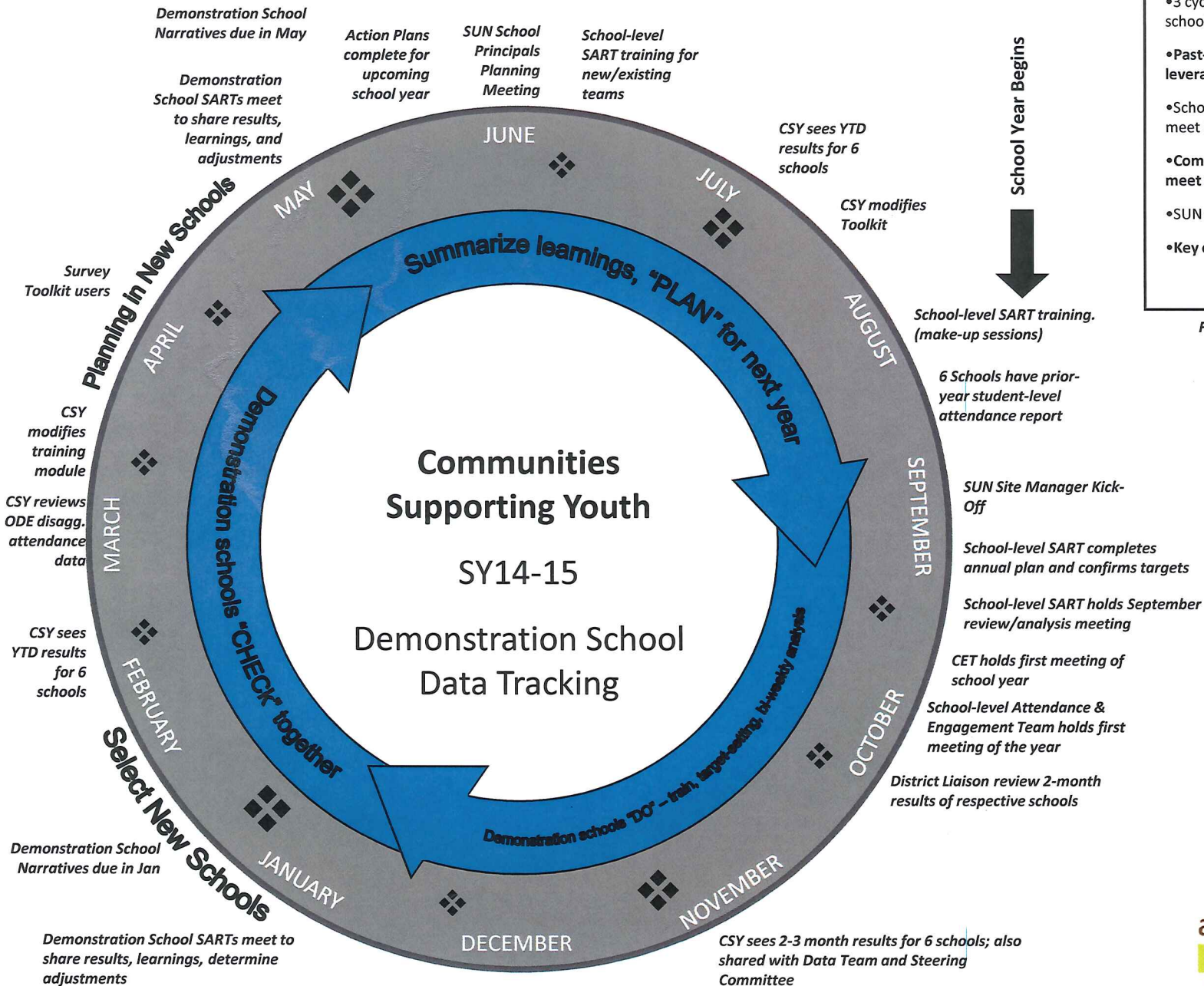
Assumptions

- 6 demonstration schools
- 3 cycles of plan-do-check-act during school year
- Past-year student-level attendance leveraged
- School Attendance Response Teams meet 2+ times per month
- Community Engagement Teams meet 3+ times per year
- SUN site managers coordinating role
- Key outcome measures: Attendance,

For schedule and accountability details, refer to Action Plans

❖ School Attendance Response Team analysis, month-end

❖ Consolidated analysis and strategy refinement



all hands raised

