



ENROLLMENT PROJECTION 2014-15

Independent School District 877
Buffalo-Hanover-Montrose

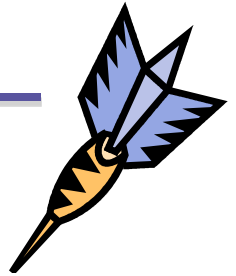
November 25, 2013



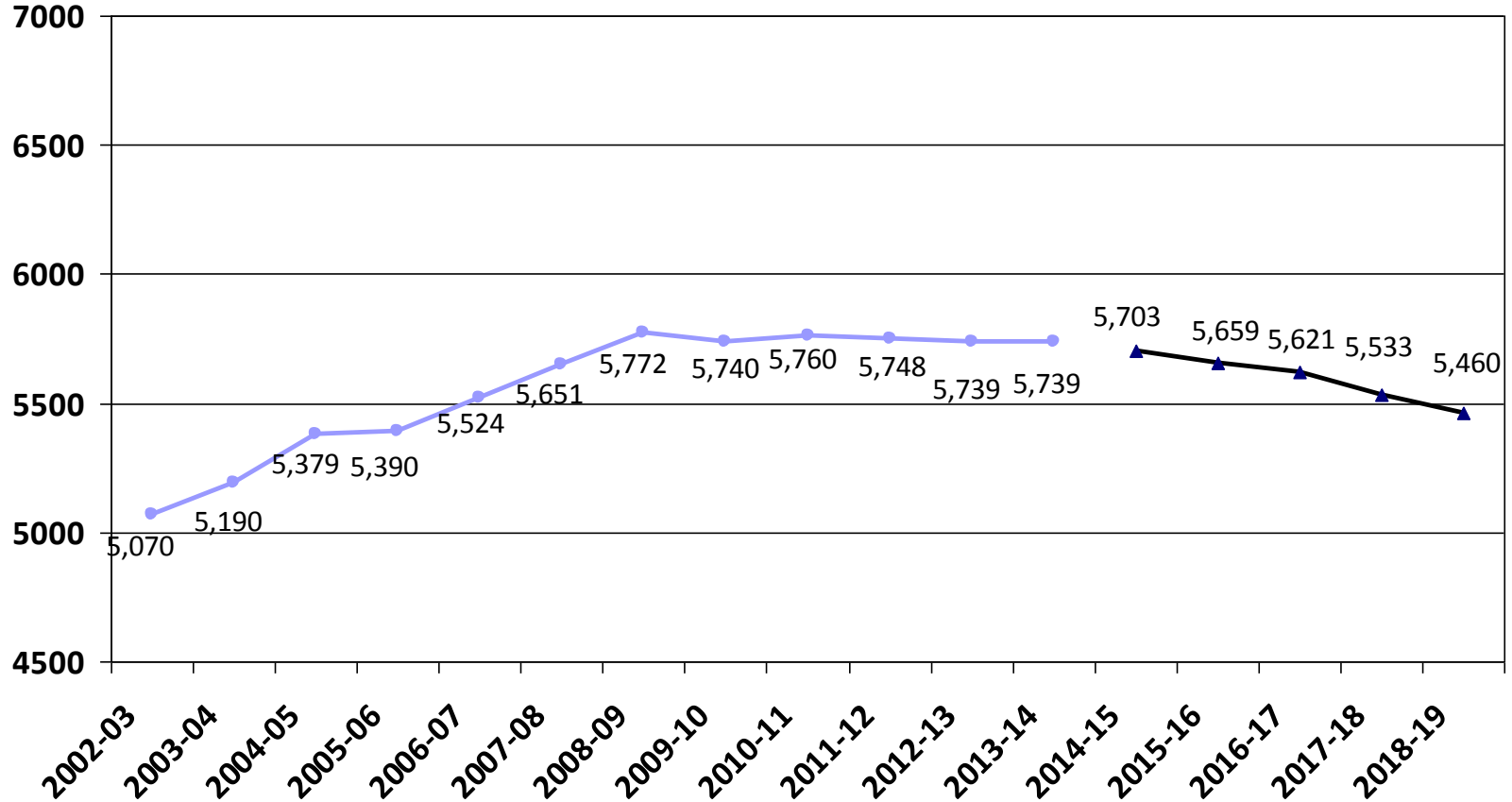
Making a Difference!

Enrollment Projection Report

- Review of K-12 enrollment as of Oct. 1st
- Resident enrollment
- Open enrollment & tuition
- Nonpublic enrollment
- Fall vs. spring enrollment
- Review 2013-14 enrollment projection
- 2014-15 enrollment projection



Historical and 2014-15 Projected K-12 Enrollment as of Oct. 1st





Review of K-12 Enrollment as of Oct. 1st

- The school district growth trend came to a halt in the 2009-10 school year and we are slightly behind with the projection for 2013-14.
- The five-year enrollment is a decline and currently averaging -6.6 students/year or -.33%.
- Total enrollment decline for the past five years is -33 students or -.57%.

	2009-10	2010-11	2011-12	2012-13	2013-14
K-12 enrollment	5,740	5,760	5,734	5,742	5,739
Change over prior year	-32	20	-26	8	-3
% change	-.55%	.35%	-.45%	.14%	-.05%

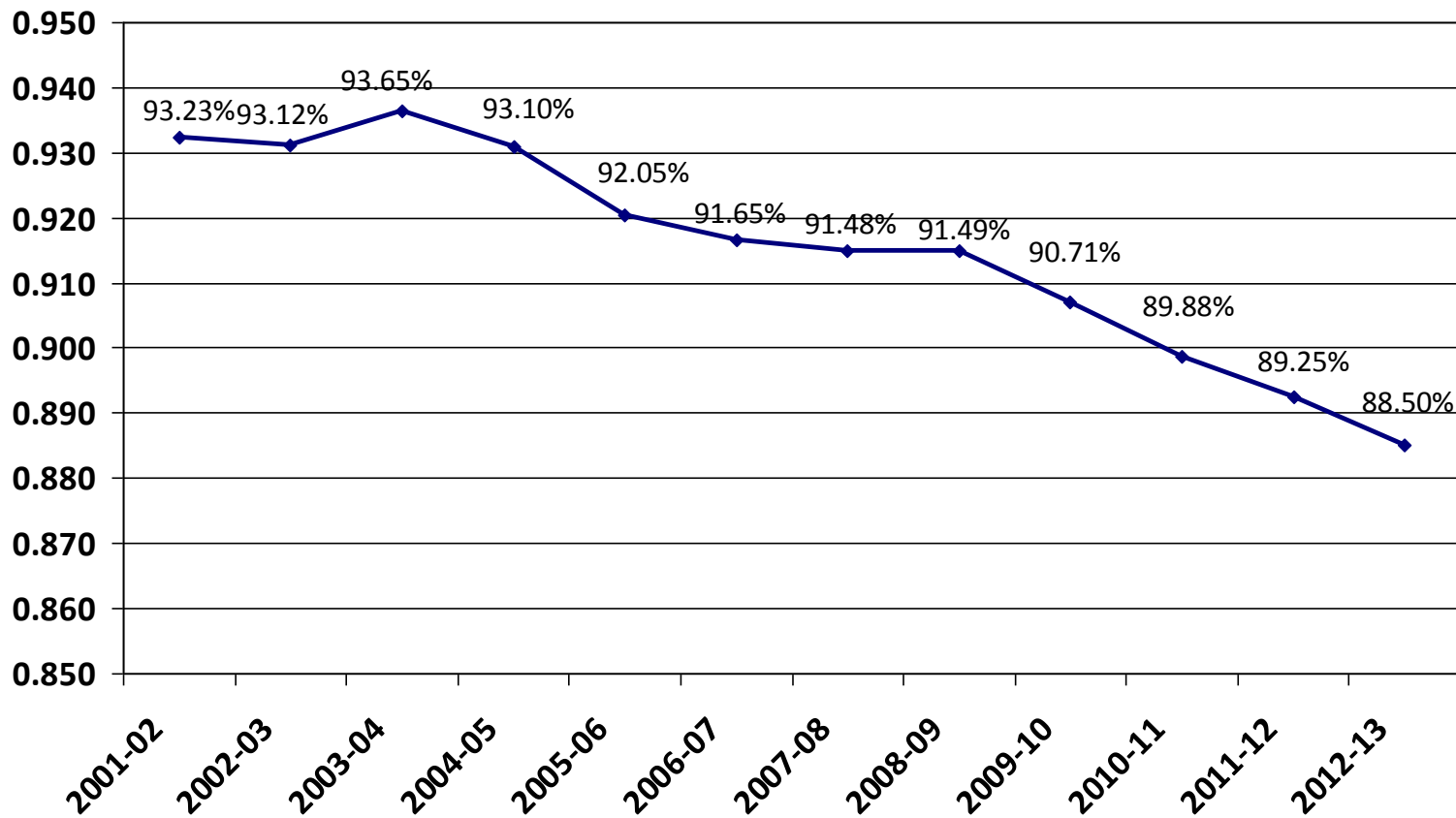


Total Resident Students Enrolled in ISD 877 as of June 30th

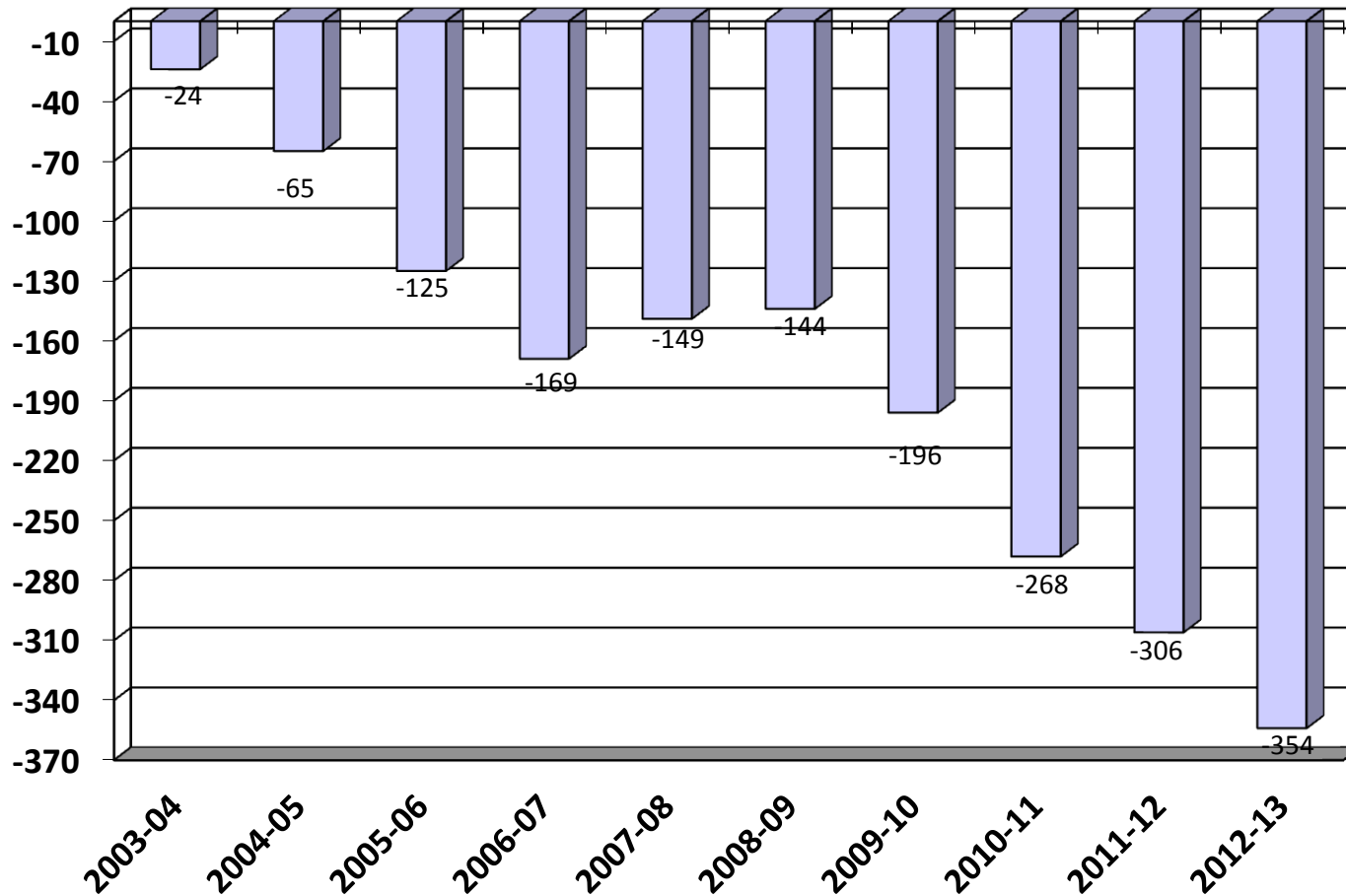
- BHM's resident population is growing although residents served is declining slightly

	2008-09	2009-10	2010-11	2011-12	2012-13
Residents served	5,396	5,369	5,394	5,358	5,380
Residents going elsewhere	501	550	607	645	701
Total Residents	5,897	5,919	6,001	6,003	6,081
Change over prior year	102	22	82	2	78
% change	1.8%	0.4%	1.39%	.03%	1.3%
% Served vs Total Population	91.5%	90.7%	89.9%	89.3%	88.5%

Total Resident Students Enrolled in ISD 877 as of June 30th



Open Enrollment & Tuition Net Gain/Loss as of June 30th

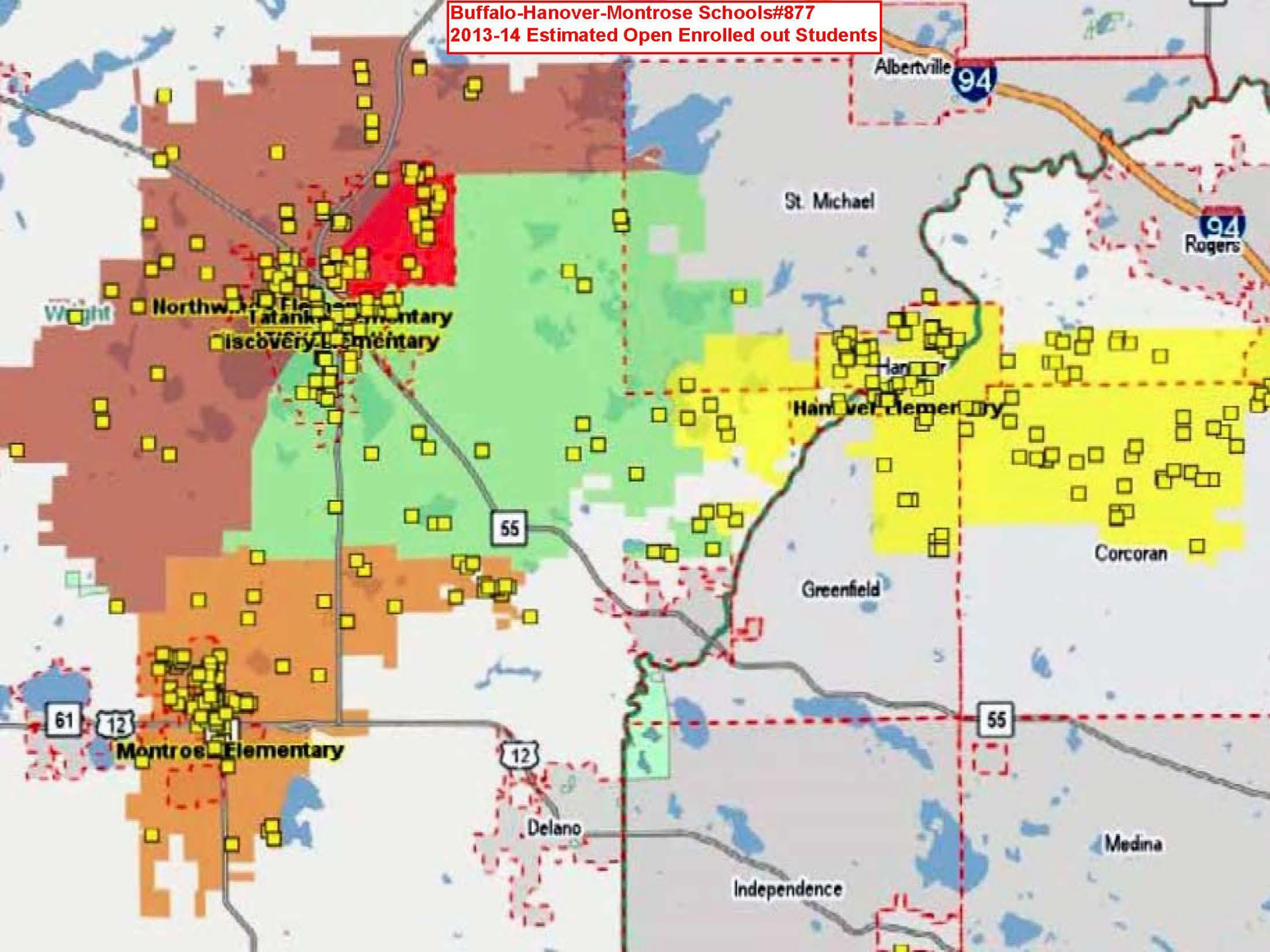




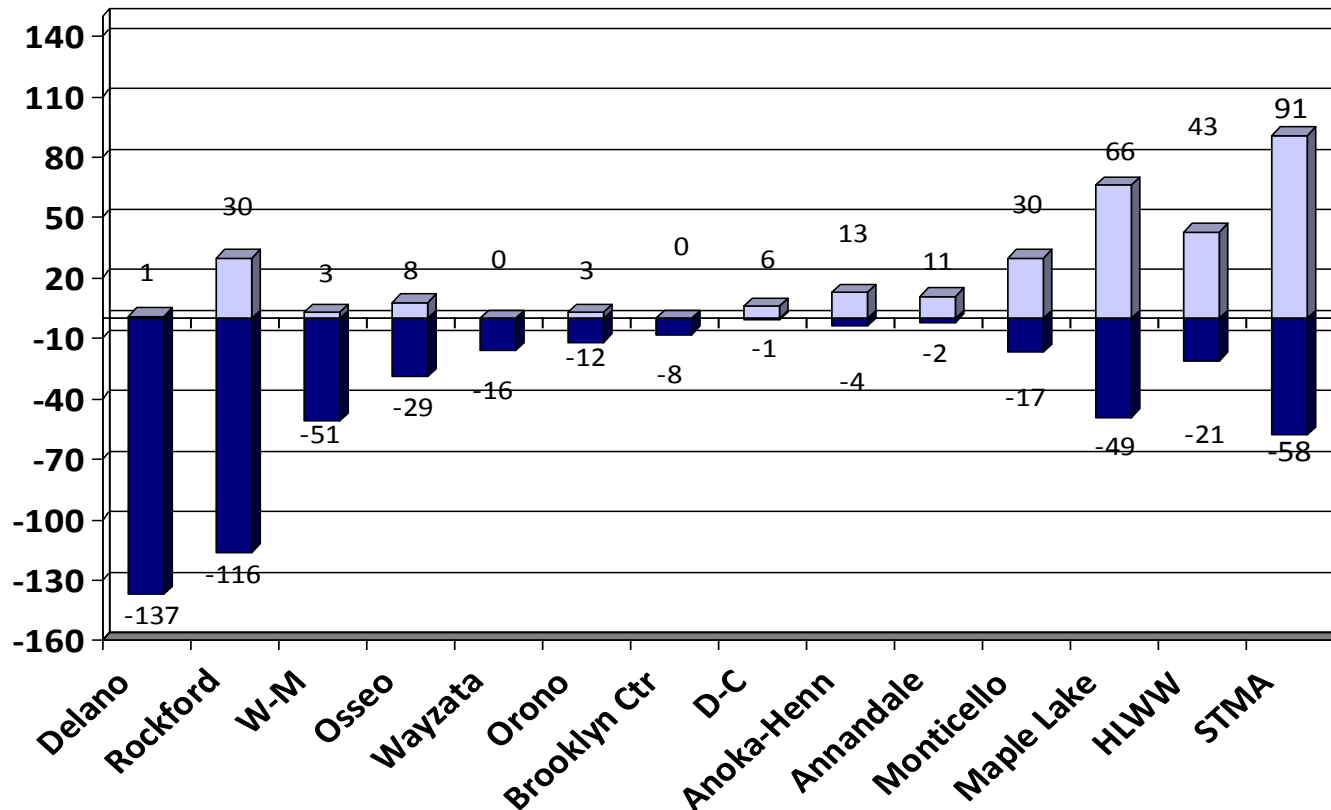
2012-13 Open Enrollment & Tuition Gain/Loss by District as of June 30th

District	In	Out	Net	
Delano	1	-138	-137	
Rockford	30	-116	-86	
Watertown-Mayer	3	-51	-48	
Osseo	8	-29	-21	<u>Other</u>
Wayzata	0	-16	-16	<u>Targeted Services,</u>
Orono	3	-12	-9	<u>Tuition, and Online</u>
Brooklyn Center	0	-8	-8	WTC -47
Dassel-Cokato	6	-1	5	MAWSECO -8
Anoka-Hennepin	13	-4	9	Mn Transitions -11
Annandale	11	-2	9	Swan River Charter -9
Monticello	30	-17	13	Houston (online) -22
Maple Lake	66	-49	17	
Howard Lake-Waverly-Winsted	43	-21	22	
St. Michael-Albertville	91	-58	33	

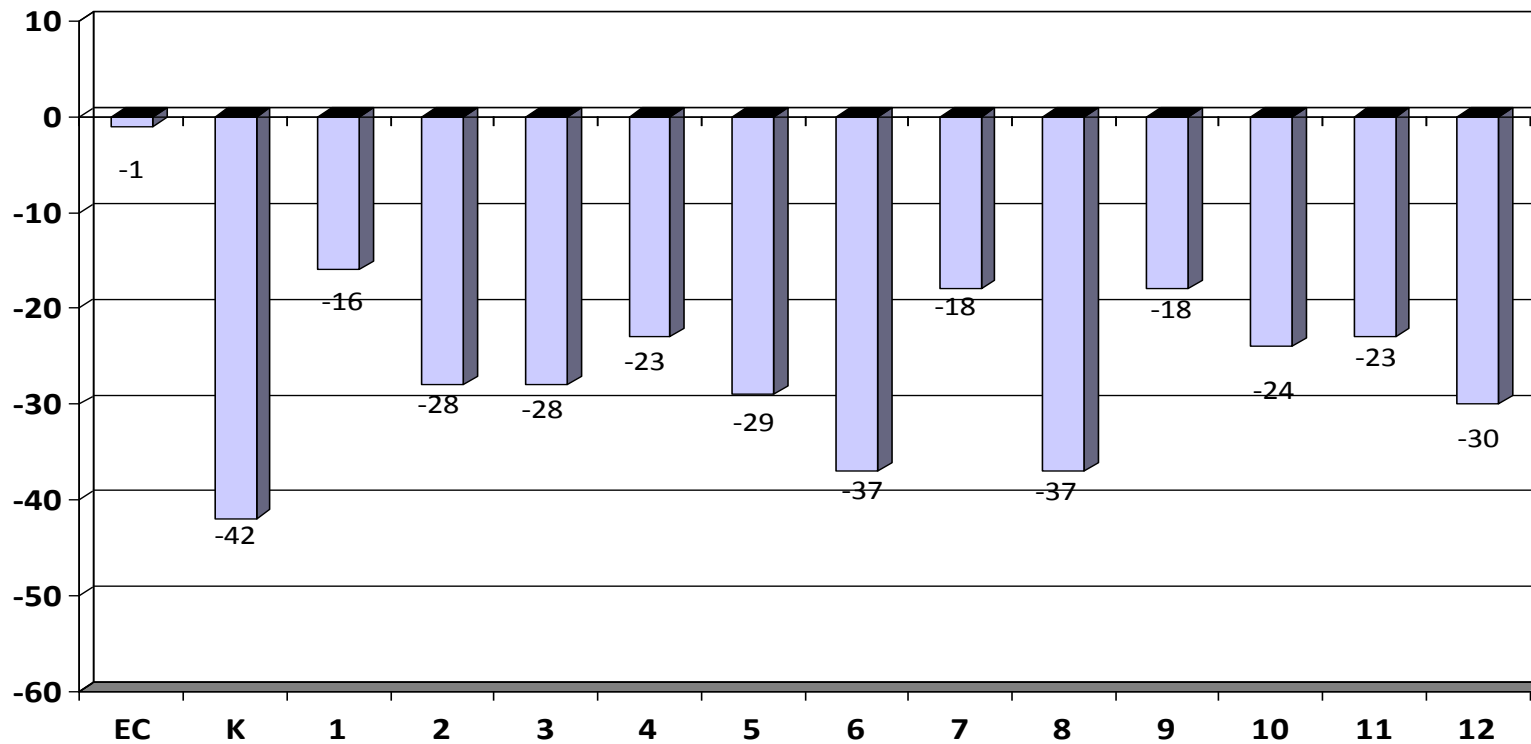
Buffalo-Hanover-Montrose Schools#877
2013-14 Estimated Open Enrolled out Students



2012-13 Open Enrollment & Tuition Gain/Loss by District as of June 30th



2012-13 Open Enrollment & Tuition by Grade as of June 30th

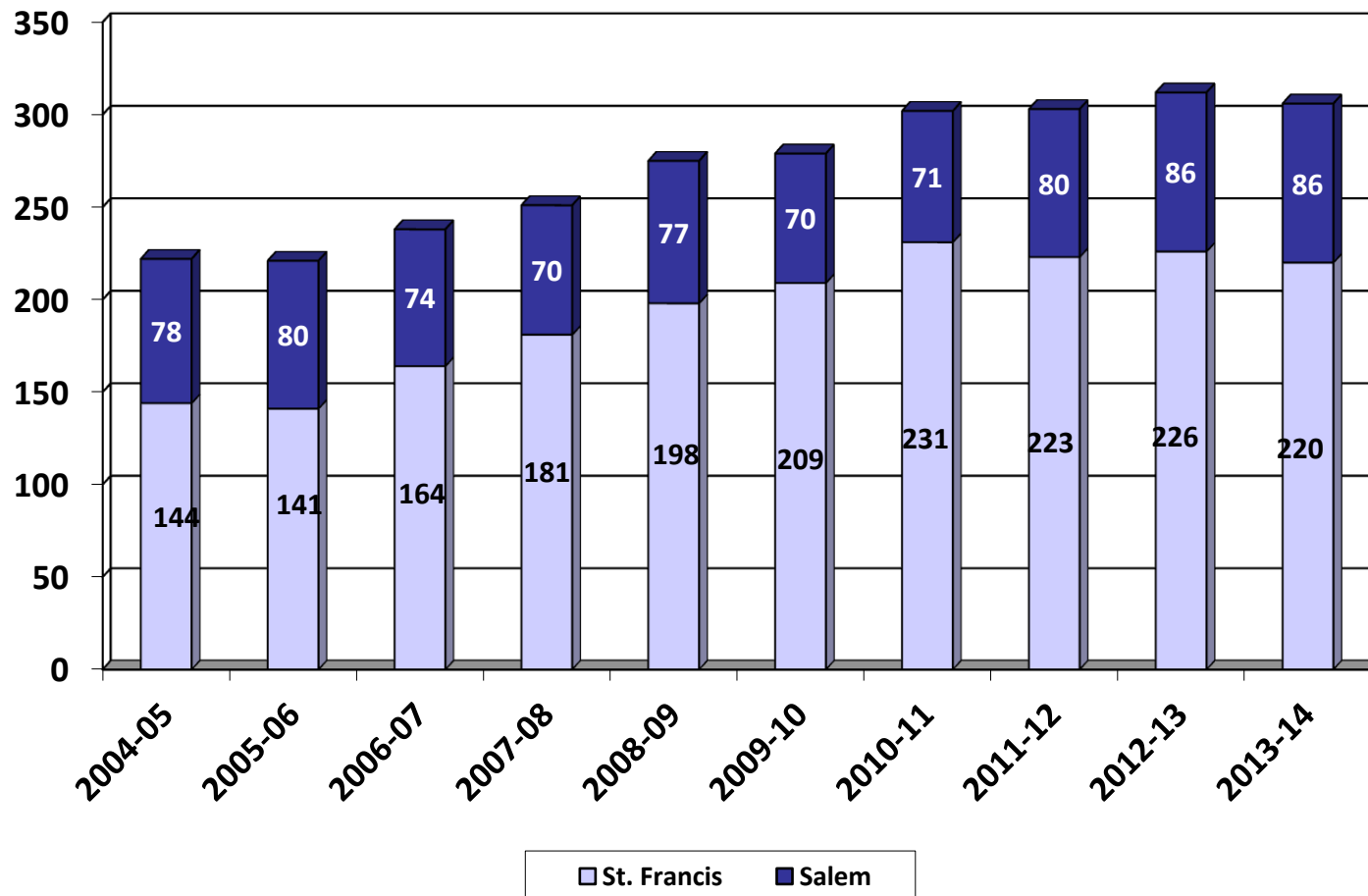


Nonpublic History

- Two nonpublic schools in the BHM district: St. Francis Xavier, Buffalo and Salem Lutheran, Loretto.
- Both schools serve students from kindergarten through 8th grade.

	04-05	05-06	06-07	07-08	08-09	09-10	10-11	11-12	12-13	13-14
Salem	78	80	74	70	77	70	71	80	86	86
St. Francis	144	141	164	181	198	209	231	223	226	220
Total	222	221	238	251	275	279	302	303	312	306
# Change	-12	-1	17	13	24	4	23	1	9	-6
% Change	-5.1%	-0.5%	7.7%	5.5%	9.6%	1.5%	8.2%	.33%	2.97%	-1.92%

Nonpublic History



2012-13 Enrollment Fall vs. Spring

- Historically, the district's K-12 enrollment decreases from October 1 to June 1.
- Most of the enrollment drops happen in grades 9-12.

	Oct. 1st, 2012	Jun. 1st, 2013	Net
K	433	431	-2
Gr. 1-5	2,222	2,208	-14
Gr. 6-8	1,337	1,338	1
Gr. 9-12	1,750	1,664	-86
Total	5,742	5,641	-101

Historical Enrollment

Fall vs. Spring

- The district had one flat year (2006-07) of enrollment growth. All other years have declined during the year.

	K	Gr. 1-5	Gr. 6-8	Gr. 9-12	Net
2002-03	-1	33	14	-51	-5
2003-04	5	-37	-3	-49	-10
2004-05	-1	0	3	-55	-53
2005-06	4	-1	-9	-56	-62
2006-07	-2	-25	10	-33	0
2007-08	9	3	3	-55	-40
2008-09	0	0	-24	-84	-108
2009-10	-2	14	-17	-58	-63
2010-11	1	-11	-10	-63	-83
2011-12	-10	-11	-14	-94	-129
2012-13	-2	-14	1	-86	-101



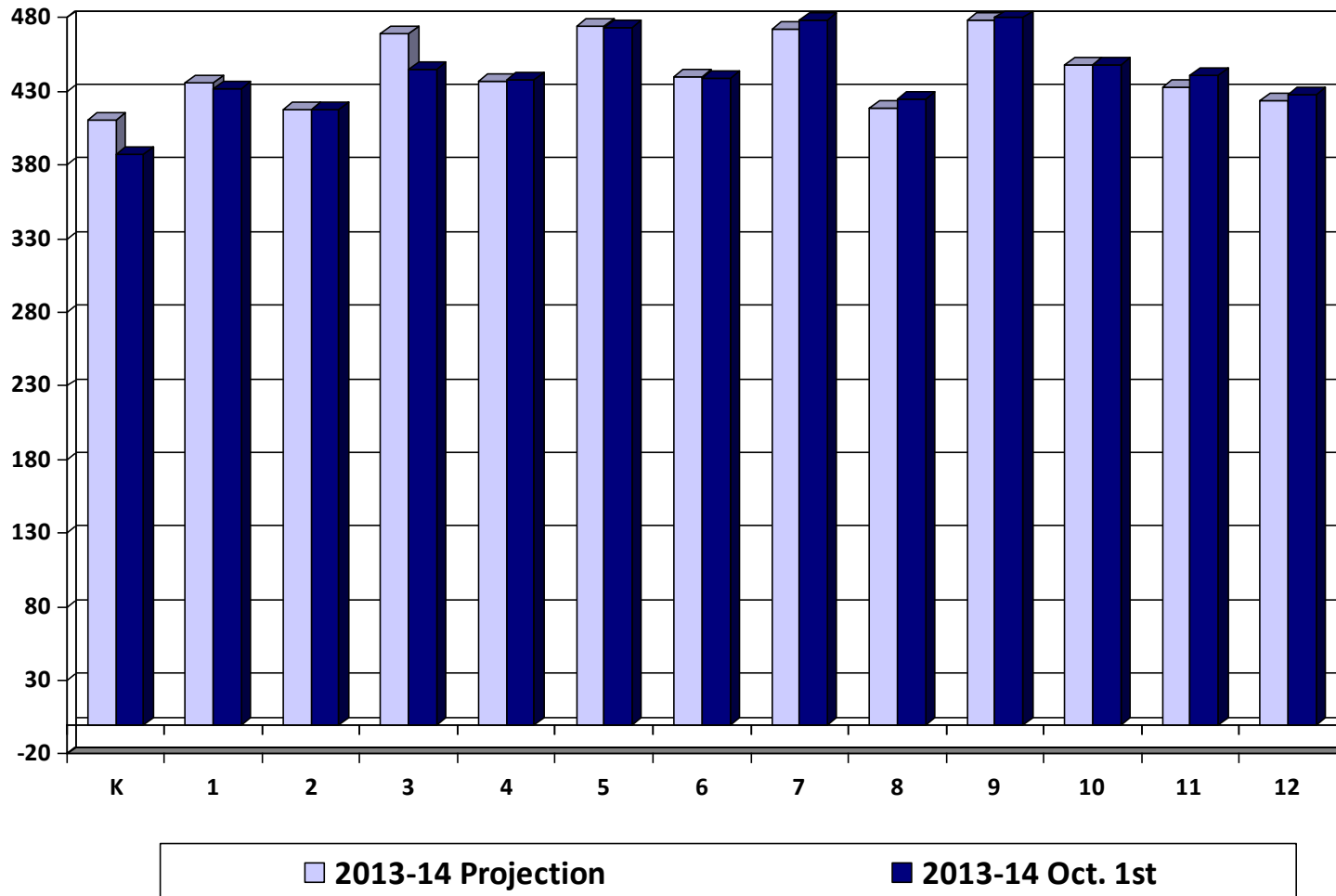
Review of 2013-14 Enrollment Projection

- Last year's enrollment projection was over-estimated by 20 students.
- Our internal monthly enrollment reports adjust down post-secondary and shared time students.
- The official Oct. 1st MARSS submission by MDE will report a higher enrollment with post-secondary and shared time students.

	2013-14 Projection	2013-14 Oct. 1st	Difference
K	411	387	-24
Gr. 1-5	2,234	2,206	-28
Gr. 6-8	1,331	1,342	11
Gr. 9-12	1,783	1,804	21
Total	5,759	5,739	-20

Review of 2013-14

Enrollment Projection by Grade



Enrollment Projection Data

- The district uses the Schoolfinances.com enrollment projection model.
- The model allows schools to develop enrollment projections based on three different sets of data:
 - **October 1st MARSS submission**
 - **End of Year ADM** is generally used for financial forecast
 - **District Data** allows schools to enter enrollment history taken at any time, resident ADM or any other historical data by grade



Kindergarten Projection Methods

- **Hold constant** maintains the 2013-14 kindergarten level.
- **Linear projection** is a straightforward mathematical projection based on nothing more than the past five years of data.
- **County birth method** uses the total number of live births in Wright County and examines what percentage of those births enroll in kindergarten. The projection is based on the average percentage of the last four years.
- **Zip code method** examines the zip codes in the district and uses a linear projection of live births on the last four years of data and computes the projected enrollment based on the lowest, average, and highest ratios.
- **District determined method** examines county birth rates in Wright County and compares that to actual student enrollment numbers in the District and projects that percentage for the next five years.



Kindergarten Projection Methods

Birth Year	Kdgn Enroll Year	Wright Co. Births	Actual Kdgn Enrollment	% of Wright Co. Births Enrolled
2002	2007	1,679	413	24.6%
2003	2008	1,926	464	24.1%
2004	2009	1,888	434	23.0%
2005	2010	2,023	455	22.5%
2006	2011	2,152	417	19.4%
2007	2012	2,183	433	19.8%
2008	2013	2,095	378	18.0%
2009	2014	1,943	367*	18.9%*
2010	2015	1,900	359*	18.9%*
2011	2016	1861	352*	18.9%*
2012	2017	1830	346*	18.9%*

* Projected K enrollment based on County births

Kindergarten Projection Methods

- Using Oct. 1st district data

	09-10	10-11	11-12	12-13	13-14	14-15	15-16	16-17	17-18	18-19
Actual enrollment	434	455	417	433	387					
Hold constant						387	387	387	387	387
Linear projection						407	401	395	390	384
Wright Co. Ave. births						400	384	375	361	346
Zip code method - Low						368	349	355	334	308
District Determined Method						367	359	352	346	340

Enrollment Projection Methods

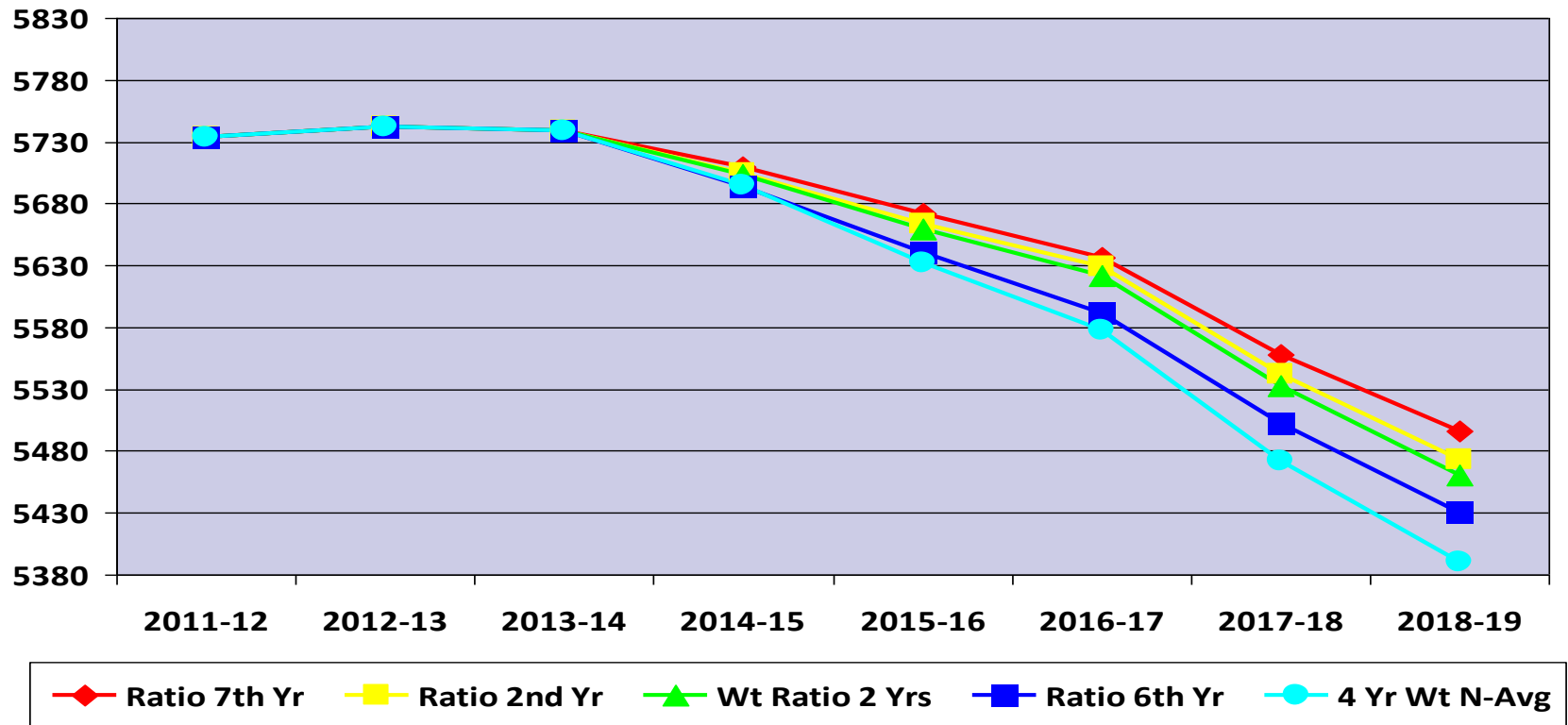
- After the kindergarten enrollment projection is complete, the overall K-12 enrollment is determined by a variety of methods:
 - Cohort Survival Method
 - Weighted Cohort Survival Method
 - Numerical Survival Method
 - Weighted Numerical Survival Method
 - Merged Method

Projection Methods Comparison

- Using Oct. 1st district data, eighteen different variations were examined.
- The following five were selected for detailed analysis:

	11-12	12-13	13-14	14-15	15-16	16-17	17-18	18-19
Ratio 7th Year	5,734	5,742	5,739	5,710	5,672	5,636	5,558	5,496
Ratio 2nd Year	5,734	5,742	5,739	5,705	5,663	5,629	5,543	5,473
Wt Ratio 2 Yrs	5,734	5,742	5,739	5,703	5,659	5,621	5,533	5,460
Ratio 6th Year	5,734	5,742	5,739	5,694	5,641	5,592	5,502	5,431
4 Yr. Num. Average	5,734	5,742	5,739	5,695	5,632	5,578	5,472	5,390
Max Difference				15	40	58	86	106

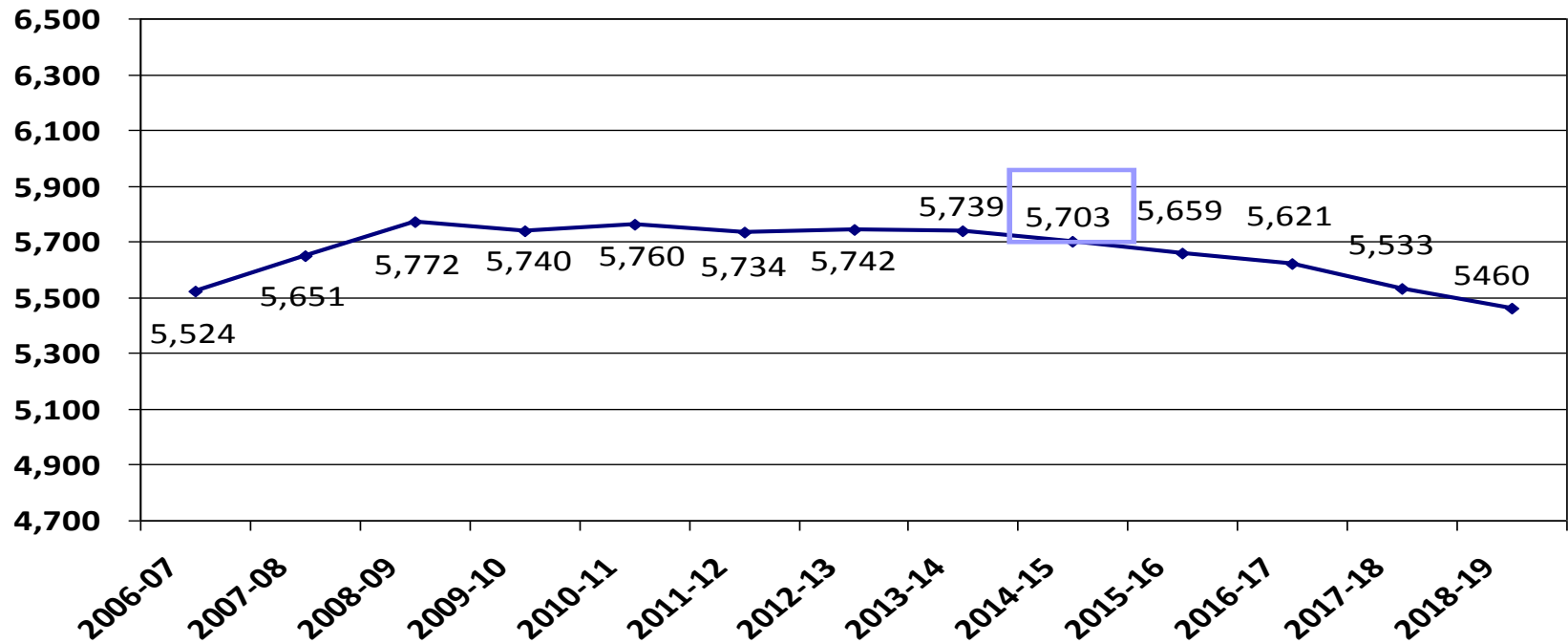
Projection Methods Comparison



2014-15 Enrollment Projection

- Factors considered: housing market, economic conditions, Wright County births, open enrollment, budget reductions, and new programs (ADED K, Quest, STEM)
- Weighted Ratio 2 Years Method
- K-12 Enrollment 5,703
- Decrease of 36 students or 0.62%

2014-15 Enrollment Projection



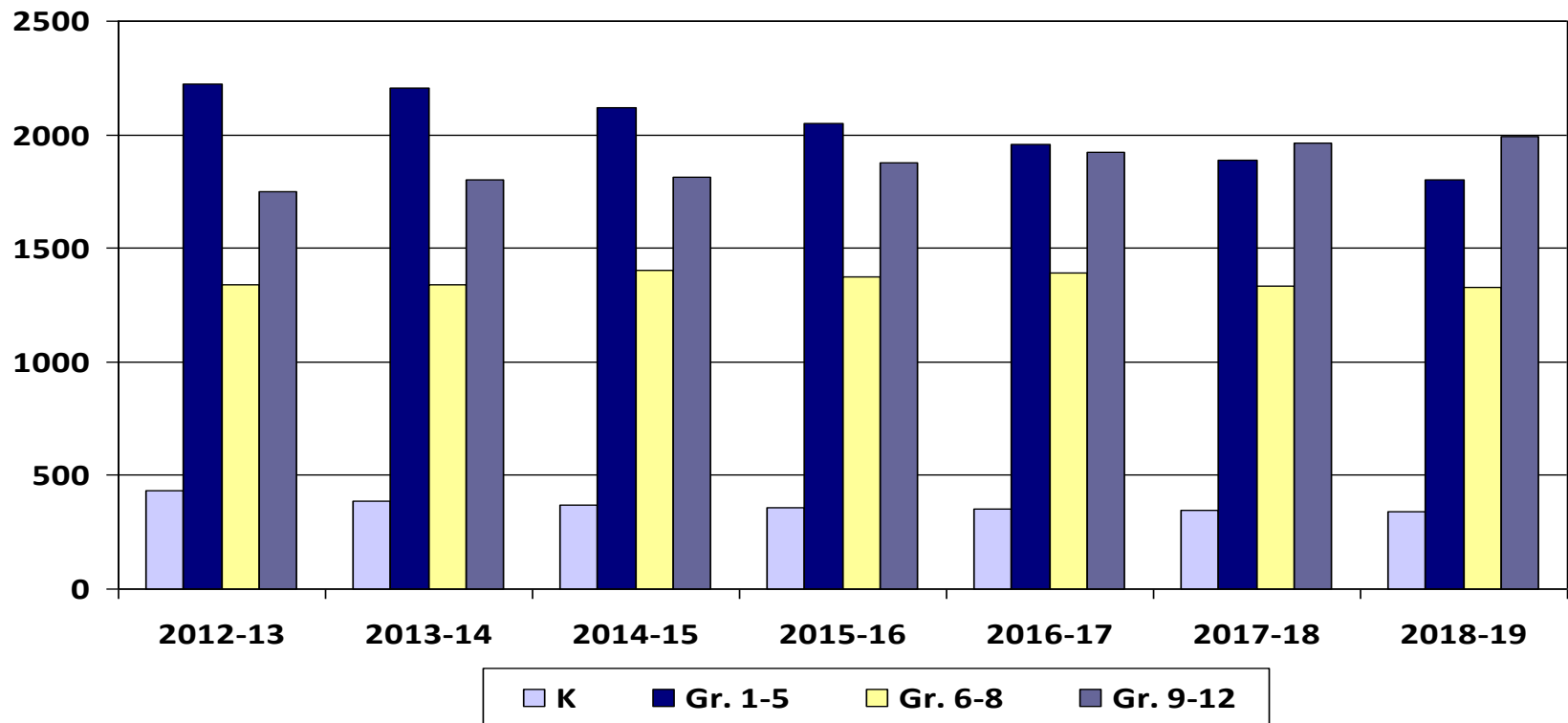


2014-15 Enrollment Projection by Grade Groupings

- With future enrollments, need to consider building capacity:
 - BHS – 1,935, PHX – 64 and PRIDE – 25
 - BCMS – 1,375
 - Elementary – 3,200

	2013-14	2014-15	2015-16	2016-17	2017-18	2018-19
K	387	367	359	352	346	340
Gr. 1-5	2,206	2,119	2,046	1,955	1,888	1,803
Gr. 6-8	1,342	1,403	1,376	1,391	1,336	1,327
Gr. 9-12	1,804	1,814	1,878	1,923	1,963	1,990
Total	5,739	5,703	5,659	5,621	5,533	5,460
		-36	-44	-38	-88	-73
		-0.62%	-0.77%	-0.67%	-1.57%	-1.31%

2014-15 Enrollment Projection by Grade Groupings

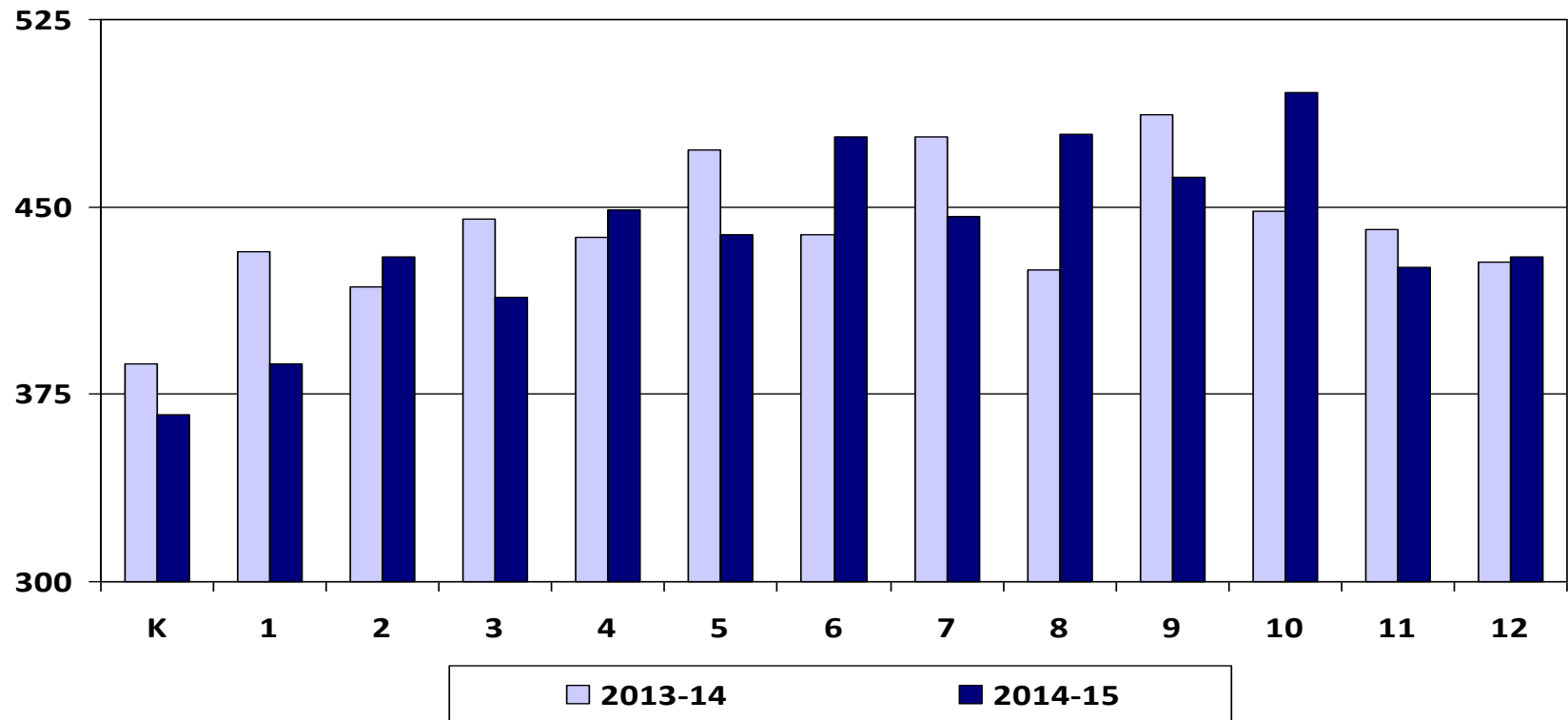




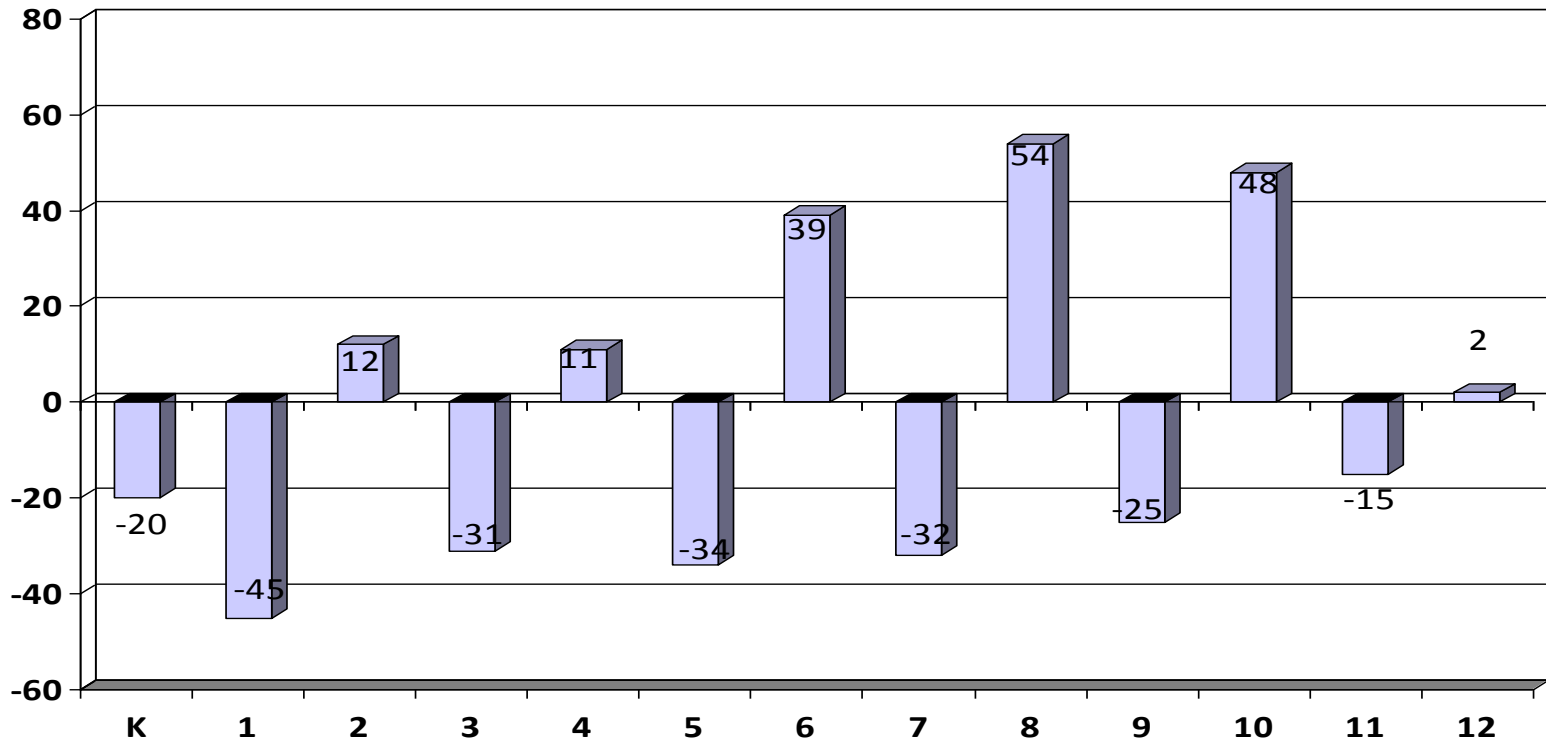
2014-15 Enrollment Projection by Grade

	2014-15	2015-16	2016-17	2017-18	2018-19
K	367	359	352	346	340
1	387	367	359	352	346
2	430	386	366	358	351
3	414	426	382	363	354
4	449	417	430	385	366
5	439	450	418	431	386
6	478	444	455	423	435
7	446	485	451	462	429
8	479	447	486	451	463
9	462	520	485	528	490
10	496	470	530	494	538
11	426	472	447	504	470
12	430	416	460	436	492
Total	5,703	5,659	5,621	5,533	5,460

2013-14 & 2014-15 Enrollment Projection by Grade



2014-15 Enrollment Change by Grade



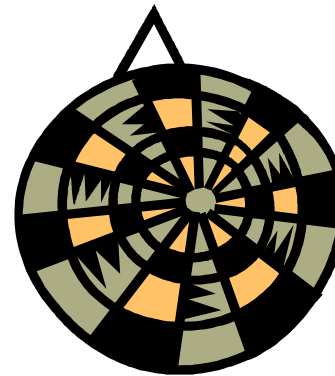
WADM Report

- The weighted average daily membership (WADM) projection shows a relatively flat projection in student aid.
- Keep in mind the district's enrollment history tends to decline from Oct. 1st to June 1st.

	2014-15		2015-16		2016-17		2017-18	
	Enroll	WADM	Enroll	WADM	Enroll	WADM	Enroll	WADM
HK	21	21	21	21	20	20	20	20
K	367	367	359	359	352	352	346	346
Gr. 1-3	1,231	1,231	1,179	1,179	1,107	1,107	1,073	1,073
Gr. 4-6	1,366	1,366	1,311	1,311	1,302	1,302	1,238	1,238
Gr. 7-8	925	1,110	932	1,119	937	1,124	913	1,096
Gr. 9-12	1,814	2,177	1,878	2,253	1,923	2,307	1,963	2,356
ECSE	102	102	100	100	98	98	96	96
M.C.P.U		16		9		9		24
Total	5,826	6,390	5,780	6,351	5,739	6,319	5,649	6,249

Conclusion

- Uncertain economic factors make enrollment projections difficult.
- BHM's enrollment is projected to decline over the next three to five years.



5,703