

A Piece of the Puzzle



As we examine attendance, we see that students are not coming for a variety of reasons, including not limited to medical, emotional, activity-related, and vacations.

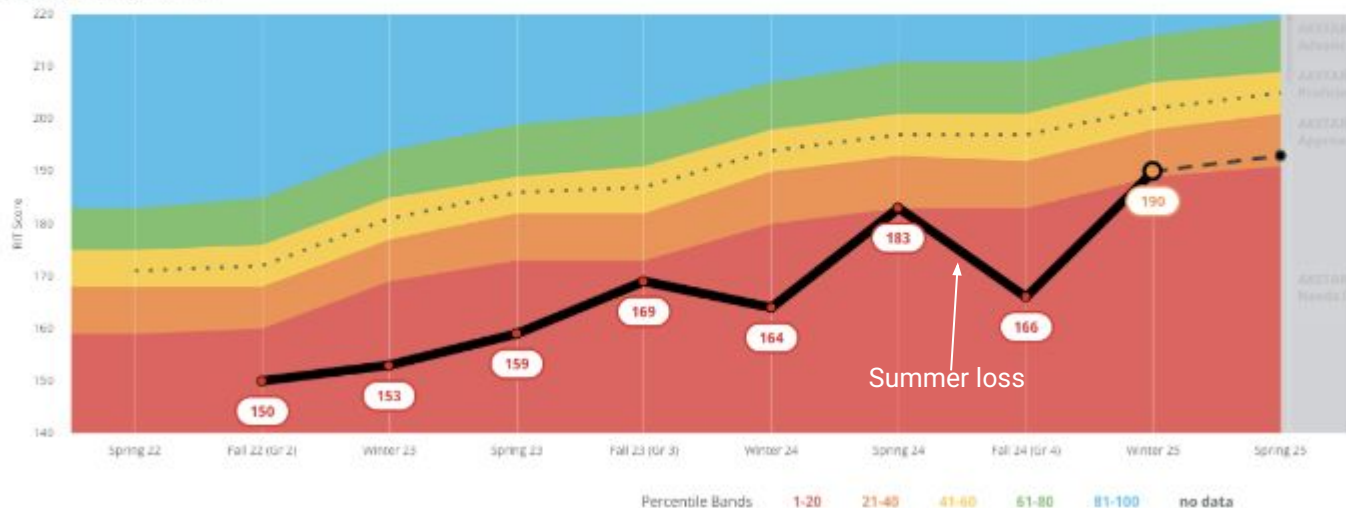
Addressing student attendance through the calendar is key to improved academic success. According to research by Gershenson et al. (2017), studies consistently show that students with higher attendance tend to achieve higher levels than those with poor attendance.

A Piece of the Puzzle

A story about a 4th-grade student:

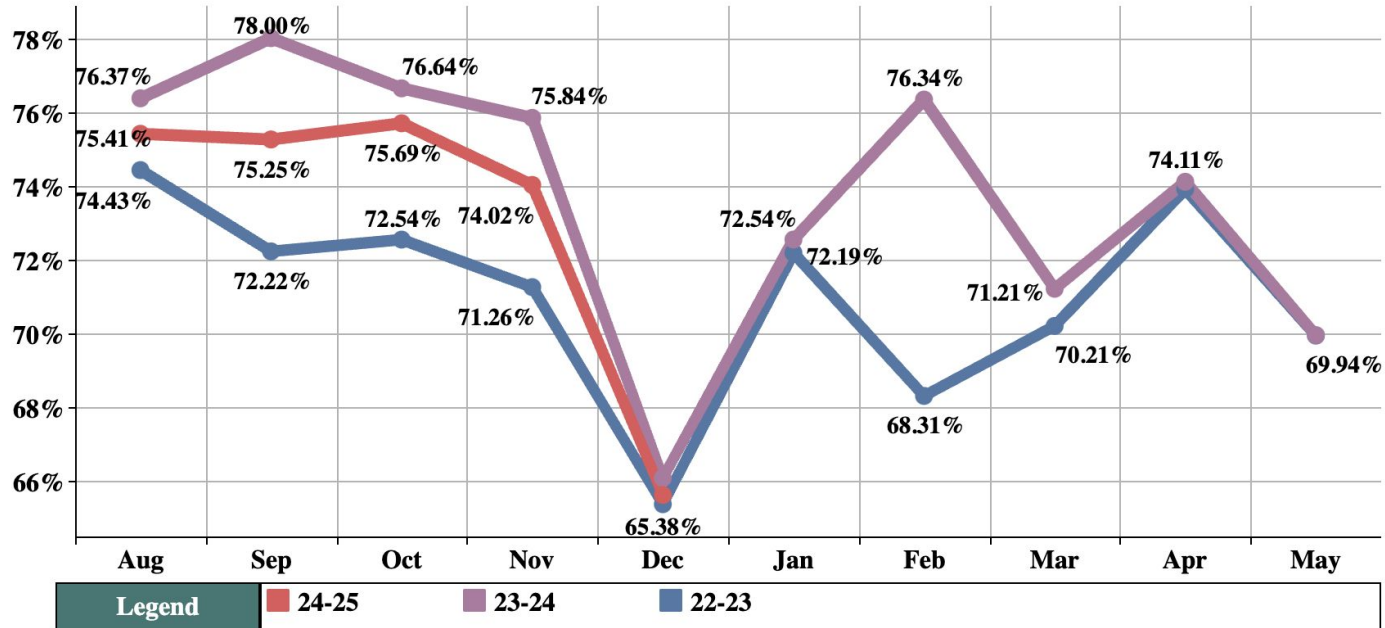
4th grade student who attended 74 days (most days attended by this student since 2022) and had 99% growth, 22nd percentile from the Fall 24 Semester until now, Winter 25

GROWTH OVER TIME



District-wide Attendance Data

Year(s): 24-25, 23-24, 22-23 | Month(s): All | Grade: All Students (Pre-K - 12)



Winter Break Specific Attendance

DECEMBER 9, 2024 - DECEMBER 14, 2024

SCHOOL	MONDAY 12/9/2024	TUESDAY 12/10/2024	WEDNESDAY 12/11/2024	THURSDAY 12/12/2024	FRIDAY 12/13/2024	SATURDAY 12/14/2024	TOTAL 12/9/2024 - 12/14/2024
AKP	75.35%	74.48%	67.71%	60.76%	CHRISTMAS BREAK	NO SCHOOL	69.57%
PHO	63.02%	60.01%	57.69%	60.90%	58.71%	52.08%	58.74%
NUI	60.53%	59.84%	58.70%	EMERGENCY CLOSURE	EMERGENCY CLOSURE	NO SCHOOL	59.69%
PIZ	EMERGENCY CLOSURE	77.62%	73.43%	73.07%	CHRISTMAS BREAK	NO SCHOOL	74.71%
AIN	35.90%	51.15%	45.70%	41.18%	32.95%	NO SCHOOL	41.38%
KAK	64.89%	64.37%	63.30%	56.21%	65.03%	NO SCHOOL	62.76%
ATQ	55.25%	61.15%	62.42%	61.54%	58.75%	NO SCHOOL	59.82%
IPK	69.60%	73.05%	69.77%	69.85%	70.03%	NO SCHOOL	70.46%
HMS	71.22%	69.12%	69.37%	62.86%	66.87%	NO SCHOOL	67.89%
BHS	68.91%	67.90%	67.28%	66.12%	69.54%	NO SCHOOL	67.95%
KLC	55.26%	53.68%	63.03%	43.68%	56.06%	NO SCHOOL	54.30%
TOTAL	64.55%	66.36%	64.41%	62.67%	63.07%	52.08%	63.96%

Winter Break Specific Attendance

DECEMBER 16, 2024 - DECEMBER 21, 2024

SCHOOL	MONDAY 12/16/2024	TUESDAY 12/17/2024	WEDNESDAY 12/18/2024	THURSDAY 12/19/2024	FRIDAY 12/20/2024	SATURDAY 12/21/2024	TOTAL 12/16/2024 - 12/21/2024
AKP	CHRISTMAS BREAK	CHRISTMAS BREAK	CHRISTMAS BREAK	CHRISTMAS BREAK	CHRISTMAS BREAK	NO SCHOOL	CHRISTMAS BREAK
PHO	59.70%	56.66%	48.24%	CHRISTMAS BREAK	CHRISTMAS BREAK	NO SCHOOL	54.87%
NUI	50.22%	49.41%	CHRISTMAS BREAK	CHRISTMAS BREAK	CHRISTMAS BREAK	NO SCHOOL	49.81%
PIZ	CHRISTMAS BREAK	CHRISTMAS BREAK	CHRISTMAS BREAK	CHRISTMAS BREAK	CHRISTMAS BREAK	NO SCHOOL	CHRISTMAS BREAK
AIN	65.41%	64.08%	62.97%	65.53%	CHRISTMAS BREAK	NO SCHOOL	64.50%
KAK	57.93%	58.79%	45.98%	46.64%	CHRISTMAS BREAK	NO SCHOOL	52.33%
ATQ	56.15%	61.25%	63.23%	45.94%	64.17%	NO SCHOOL	58.15%
IPK	63.64%	64.05%	60.25%	CHRISTMAS BREAK	CHRISTMAS BREAK	NO SCHOOL	62.65%
HMS	58.52%	57.28%	54.19%	CHRISTMAS BREAK	CHRISTMAS BREAK	NO SCHOOL	56.66%
BHS	63.80%	62.57%	57.51%	CHRISTMAS BREAK	CHRISTMAS BREAK	NO SCHOOL	61.29%
KLC	58.95%	62.50%	68.16%	CHRISTMAS BREAK	CHRISTMAS BREAK	NO SCHOOL	63.20%
TOTAL	60.59%	60.12%	57.04%	55.48%	64.17%	NO SCHOOL	59.19%

Nunamiut Attendance Data

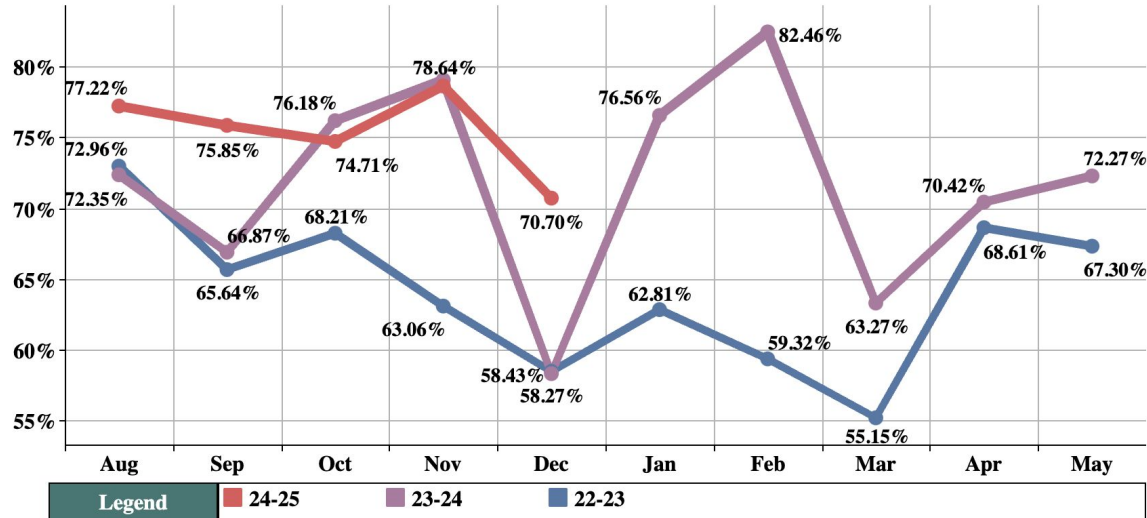


Nunamiut Attendance: Monthly & Yearly Comparison North Slope Borough School District



Filters
 Year(s): (Multiple val... ▼)
 Month(s): (All) ▼
 School: Nunamiut ▼
 Grade: All Students ... ▼
 [↓ PDF](#)

Year(s): 24-25, 23-24, 22-23 | Month(s): All | Grade: All Students (Pre-K - 12)



Tikigaq Attendance Data

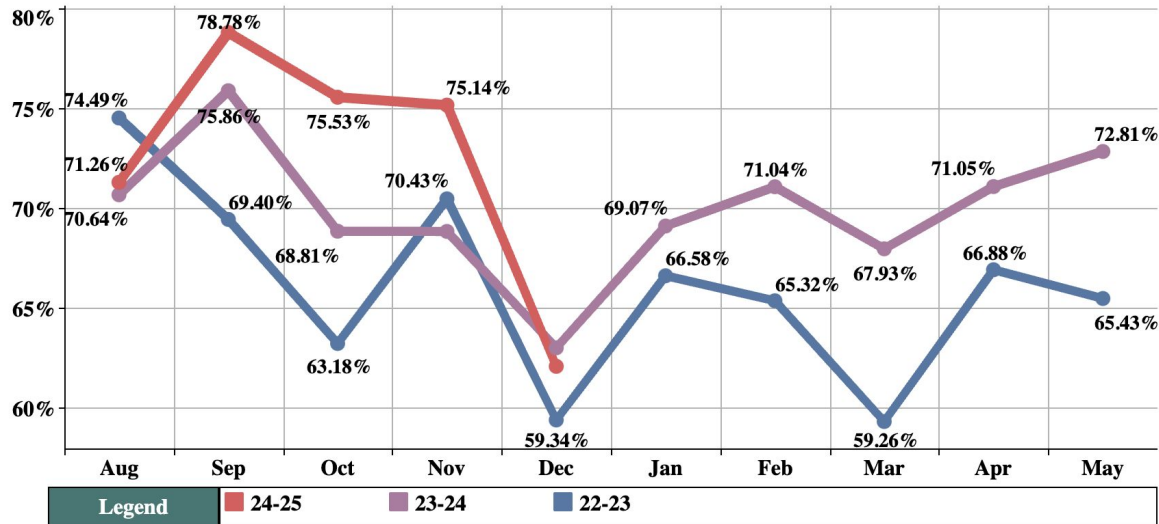


Tikigaq Attendance: Monthly & Yearly Comparison North Slope Borough School District



Filters Year(s): (Multiple val... | Month(s): (All) | School: Tikigaq | Grade: All Students ... [PDF](#)

Year(s): 24-25, 23-24, 22-23 | Month(s): All | Grade: All Students (Pre-K - 12)



Kali Attendance Data



Kali Attendance: Monthly & Yearly Comparison North Slope Borough School District

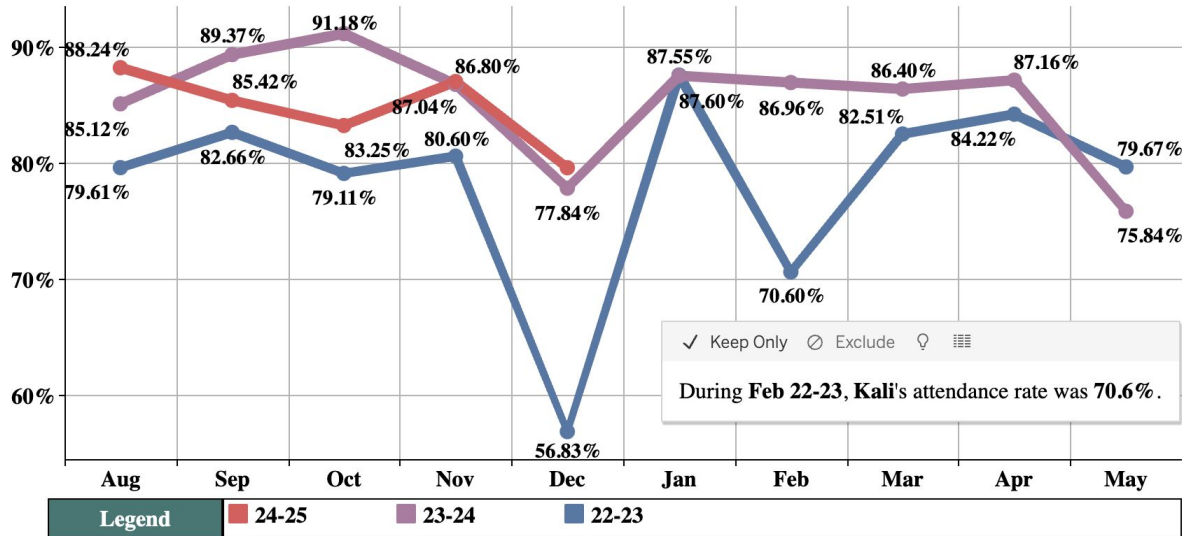


Filters

Year(s): (Multiple val... | Month(s): (All) | School: Kali | Grade: All Students ...

[PDF](#)

Year(s): 24-25, 23-24, 22-23 | Month(s): All | Grade: All Students (Pre-K - 12)



Excused Absences

Excused absences are permitted for only 3 reasons (per Alaska State regulation):

- Health Reasons – personal illness, injury, quarantine;
- Death or serious illness in the family;
- Pre-arranged activity, defined as an educational experience, approved by the site administrator as serving the student's educational interests despite an absence from school (e.g., school planned trips, extra-curricular activities, parent planned experience such as AFN or subsistence activities).

Unexcused Absences

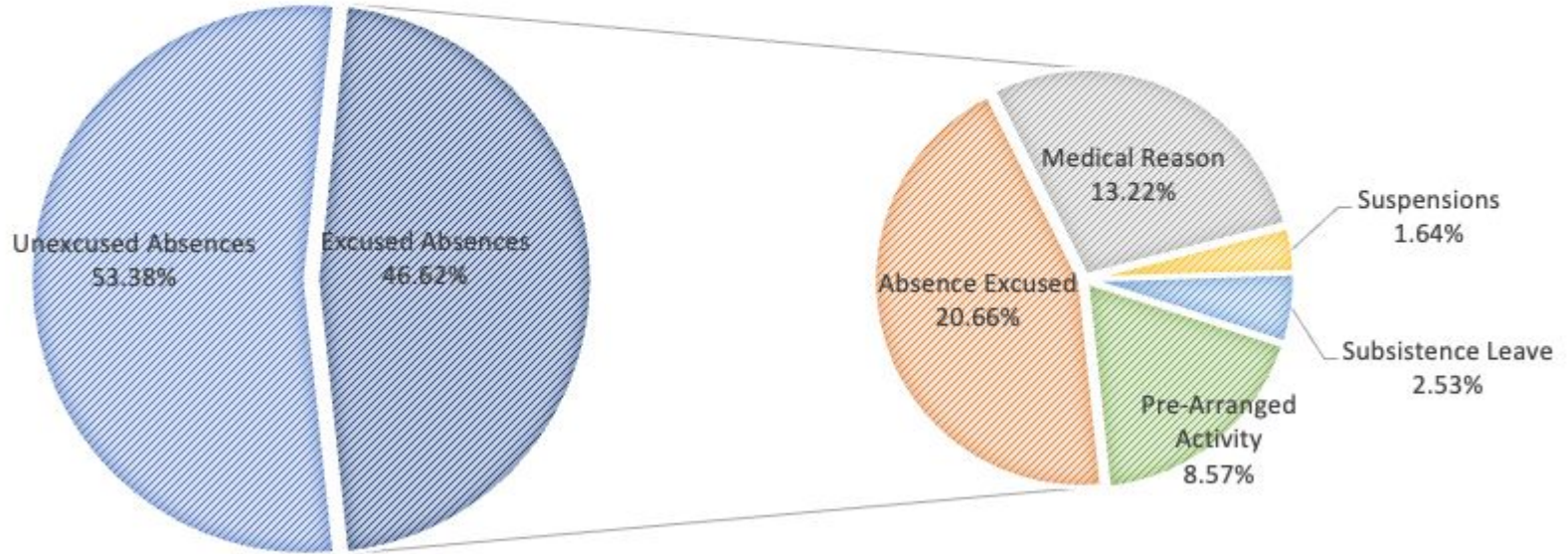
Any absence that is not permitted by either State Law, Board Policy or listed above will not be excused, however, the student will not be withdrawn after 10 days if:

- The pre-acknowledged absence form is submitted at least 5 days in advance.
- The parent has requested and the school has provided assignments from the student's teacher(s) to be completed while absent. At a minimum, assignments should include daily reading, writing (e.g., a daily log of activities and experiences), and a math assignment.

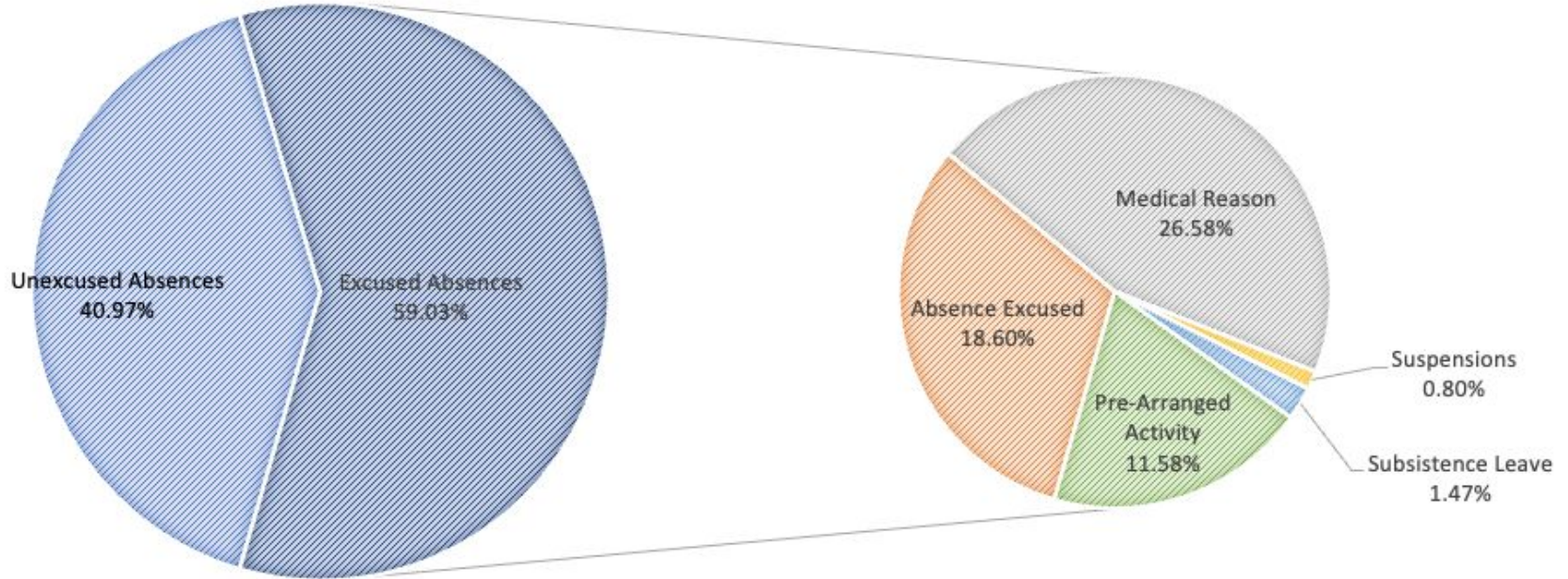
In the event that the above requirements are not met and a pre-acknowledged absence form is not approved, the student may be withdrawn by the district after 10 days.

Unexcused absences trigger parental notification, and can lead to truancy proceedings by the State of Alaska.

SY23/24 Secondary Meeting Attendance



SY23/24 Elementary Meeting Attendance



Make-up Work

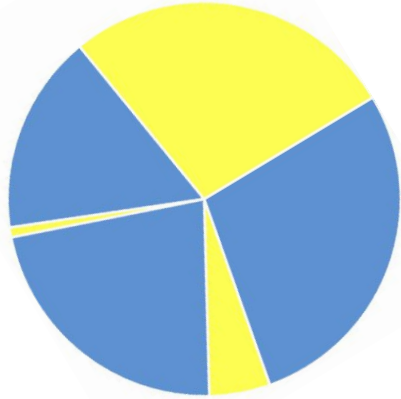
- Students shall be given the opportunity to make up schoolwork missed because of an excused absence or suspension, and shall receive full credit if the work is turned in within two (2) weeks.
- Students shall be given the opportunity to make up schoolwork missed because of an unexcused absence, and shall receive half-credit if the work is turned in within three (3) days.
 - Because whether or not an attendance is excused is not often controlled by the student, we are presently giving students 2 weeks to complete their makeup work. We believe this is in the best interest of the child.

End of Attendance Overview

Calendar Conversations

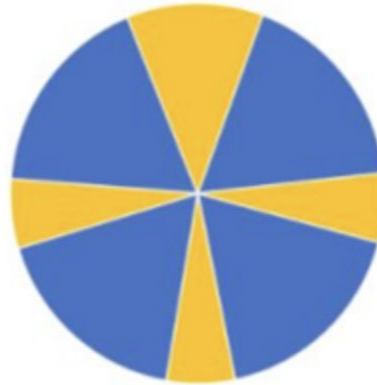
- Attendance graphs and heat maps were sent out for review by each SAC to aid in calendar conversations.
- The addition of a spring break concurrent to State Basketball Tournaments was included in the calendar memo from Central Office.
- CSA Vadiveloo attended SAC calendar meetings to provide additional information and have conversations about attendance drop-offs.
- Snow days and their make-ups continue to be a big conversation.
 - The state allows for us to make up the days (when we fall to less than 180) by having an additional day, or adding instructional minutes to existing school days. Due to a lack of attendance, we have provided direction that Saturdays will not be scheduled for make-ups. The first 2 snows days will not be made up by students.

NSBSD Typical Calendar



191 days	Teacher Days
182 days	Student Days
0 days	Fall Break
12 days	Winter Break
2 days	Spring Break
12 weeks	Summer Break

45/15 Balanced Calendar



190 days	Teacher Schedule
180 days	Student Instruction
15 days	Fall Break
15 days	Winter Break
15 days	Spring Break
5 weeks	Summer Break

45/10 Balanced Calendar



190 days	Teacher Schedule
180 days	Student Instruction
10 days	Fall Break
15 days	Winter Break
10 days	Spring Break
7-8 weeks	Summer Break

2024-2025 School Calendar

District Name: SOUTHEAST ISLAND SCHOOL DISTRICT														School: ALL SCHOOLS including AK-TRAILS Correspondence																									
Approved By: SISD Board of Education & DEED Commissioner														Title: District-wide 2024-2025 School Calendar																									
LEGEND		Aug-24							Sep-24							Oct-24																							
C	School Closes	S	M	T	W	T	F	S	S	M	T	W	T	F	S	S	M	T	W	T	F	S	S	M	T	W	T	F	S										
E	End of Quarter					1	2	3	1	2	3	4	5	6	7					1	2	3	4	5															
H	Legal Holiday								H					W						M	M																		
I	Inservice Day	4	5	6	7	8	9	10	8	9	10	11	12	13	14	6	7	8	9	10	11	12																	
M	Parent-Teacher Conf																																						
O	School Opens								NI	SI	LT												W																
S	Saturday School	18	19	20	21	22	23	24	22	23	24	25	26	27	28	20	21	22	23	24	25	26																	
T	Testing				I	I	W	W	W						W							E	W																
V	Vacation Day	25	26	27	28	29	30	31	29	30													27	28	29	30	31												
W	Teacher Workday				O																																		
X	Emergency Closure Day																																						
LT	Lead Teacher Day*																																						
NI	New Teacher Inservice**	# of Inservice Days: 2							# of Inservice Days: 1							# of Inservice Days: 0																							
SI	SpEd Inservice**	# of Student Days: 4							# of Student Days: 16							# of Student Days: 19																							
	In-session day	# of Teacher Days: 9							# of Teacher Days: 19							# of Teacher Days: 21																							
Nov-24							Dec-24							Jan-25							Feb-25																		
S	M	T	W	T	F	S	S	M	T	W	T	F	S	S	M	T	W	T	F	S	S	M	T	W	T	F	S	S	M	T	W	T	F	S					
					1	2	1	2	3	4	5	6	7								1	2	3	4															
													W								H	V	V																
3	4	5	6	7	8	9	8	9	10	11	12	13	14	5	6	7	8	9	10	11	2	3	4	5	6	7	8												
					I								W																										
10	11	12	13	14	15	16	15	16	17	18	19	20	21	12	13	14	15	16	17	18	9	10	11	12	13	14	15												
					W								V	V														W											
17	18	19	20	21	22	23	22	23	24	25	26	27	28	19	20	21	22	23	24	25	16	17	18	19	20	21	22												
													V	V	H	V	V								E							M	M						
24	25	26	27	28	29	30	29	30	31					26	27	28	29	30	31								23	24	25	26	27	28							
					V	V	V	H	H																														
# of Inservice Days: 1							# of Inservice Days: 0							# of Inservice Days: 1							# of Inservice Days: 0																		
# of Student Days: 12							# of Student Days: 11							# of Student Days: 16							# of Student Days: 16																		
# of Teacher Days: 14							# of Teacher Days: 13							# of Teacher Days: 19							# of Teacher Days: 18																		
Mar-25							Apr-25							May-25							Jun-25																		
S	M	T	W	T	F	S	S	M	T	W	T	F	S	S	M	T	W	T	F	S	S	M	T	W	T	F	S	S	M	T	W	T	F	S					
						1							1	1	2	3	4	5									1	2	3	4	5	6	7						
													E	W																									
2	3	4	5	6	7	8	6	7	8	9	10	11	12	4	5	6	7	8	9	10	8	9	10	11	12	13	14												
9	10	11	12	13	14	15	13	14	15	16	17	18	19	11	12	13	14	15	16	17	15	16	17	18	19	20	21												
16	17	18	19	20	21	22	20	21	22	23	24	25	26	18	19	20	21	22	23	24	22	23	24	25	26	27	28												
23	24	25	26	27	28	29	27	28	29	30				25	26	27	28	29	30	31	29	30																	
30	31																																						
# of Inservice Days: 1							# of Inservice Days: 0							# of Inservice Days: 1							# of Inservice Days: 0																		
# of Student Days: 13							# of Student Days: 18							# of Student Days: 16							# of Student Days: 5																		
# of Teacher Days: 15							# of Teacher Days: 20							# of Teacher Days: 18							# of Teacher Days: 6																		

July 2024							
S	M	T	W	T	F	S	
	1	2	3	4	5	6	
7	8	9	10	11	12	13	
14	15	16	17	18	19	20	
21	22	23	24	25	26	27	
28	29	30	31				
August 2024							
S	M	T	W	T	F	S	
					1	2	3
4	5	6	7	8	9	10	
11	12	13	14	15	16	17	
18	19	20	21	22	23	24	
25	26	27	28	29	30	31	
September 2024							
S	M	T	W	T	F	S	
1	2	3	4	5	6	7	
8	9	10	11	12	13	14	
15	16	17	18	19	20	21	
22	23	24	25	26	27	28	
29	30						
October 2024							
S	M	T	W	T	F	S	
			1	2	3	4	5
6	7	8	9	10	11	12	
13	14	15	16	17	18	19	
20	21	22	23	24	25	26	
27	28	29	30	31			
November 2024							
S	M	T	W	T	F	S	
						1	2
3	4	5	6	7	8	9	
10	11	12	13	14	15	16	
17	18	19	20	21	22	23	
24	25	26	27	28	29	30	
December 2024							
S	M	T	W	T	F	S	
1	2	3	4	5	6	7	
8	9	10	11	12	13	14	
15	16	17	18	19	20	21	
22	23	24	25	26	27	28	
29	30	31					

2024-2025 School Calendar

\ x s l b # f k r r c g l w u l f w



P.O. Box 51190
 907 825-3600 (Fax) 1 877 825-2429
 Akhiachak, Alaska 99551 www.yupit.org

CONTACT NUMBERS

District Office	907 825-3600
Akiach School	907-765-4600
Akiachak School	907 825-3665
Tuluksak School	907 695-5600
Maintenance	ysd.maintenance.staff@yupit.org
Technology Dept	techsupport@yupit.org
Payroll Dept	payroll@yupit.org

Aug 26-Sept 6 Cultural Week

INSERVICE/WORKDAY DATES

August 23-24	Teacher Workday
Sep 3-6	Inservice
Nov 1, 4, 5	Inservice
Dec 18-19	Teacher Workday
Jan 7	Teacher Workday
March 6-7, 10	Inservice
May 2	Teacher Workday

W H W W # D W H V
AOP: Chs. 5/9/24-9/30/24; Mclass BOY: 9/30-9/30/24; 12/24-12/13/24;
Yupik OLS: 9/30-9/30/24; 12/24-12/13/24; 4/2/25; MAP Growth: 9/30-9/27/24;
MAP BOY: 12/24-12/13/24-4/16/25; NAEP: 12/18-22/25; WIDA Access: 5/1/25-22/25;
DLM: 3/17/25-4/30/25; AK SCI: 3/24/25-4/25/25; AK STAR: 3/24/25-4/25/25

W e g h q v # i j j l w u k b r g D x j x w i # < 5 6 / # 3 5 7
 O d v w # G d | # : # f k r r c # # # # d | # i / # 3 5 8

CLASSIFIED PAY SCHEDULE CERTIFIED

July 14/31	July 31, 2024
August 15/30	August 30, 2024
September 13/30	September 30, 2024
October 15/31	October 31, 2024
November 15/29	November 29, 2024
December 13/31	December 31, 2024
January 15/31	January 31, 2025
February 14/28	February 28, 2025
March 14/31	March 31, 2025
April 15/30	April 30, 2025
May 15/30	May 30, 2025
June 13/30	June 30, 2025

January 2025						
S	M	T	W	T	F	S
			1	2	3	4
5	6	7	8	9	10	11
12	13	14	15	16	17	18
19	20	21	22	23	24	25
26	27	28	29	30	31	
February 2025						
S	M	T	W	T	F	S
						1
2	3	4	5	6	7	8
9	10	11	12	13	14	15
16	17	18	19	20	21	22
23	24	25	26	27	28	
March 2025						
S	M	T	W	T	F	S
						1
2	3	4	5	6	7	8
9	10	11	12	13	14	15
16	17	18	19	20	21	22
23	24	25	26	27	28	29
30	31					
April 2025						
S	M	T	W			

Key Discussion questions moving forward:

- Do we want to move to a completely unified calendar?
- Do we want to investigate Fall and Winter breaks between instructional quarters?

State Requirements

- The State requires 180 school days. Presently, NSBSD requires 182. This includes 9 inservice days.
- A minimum day of instruction is 4 hours (exclusive of breaks and meals) for students in K-3 and 5 hours (exclusive of breaks, passing time, and meals) for students in grades 4-12.
- Instructional minutes vary by school and grade level.

Instructional Minutes

REGULAR

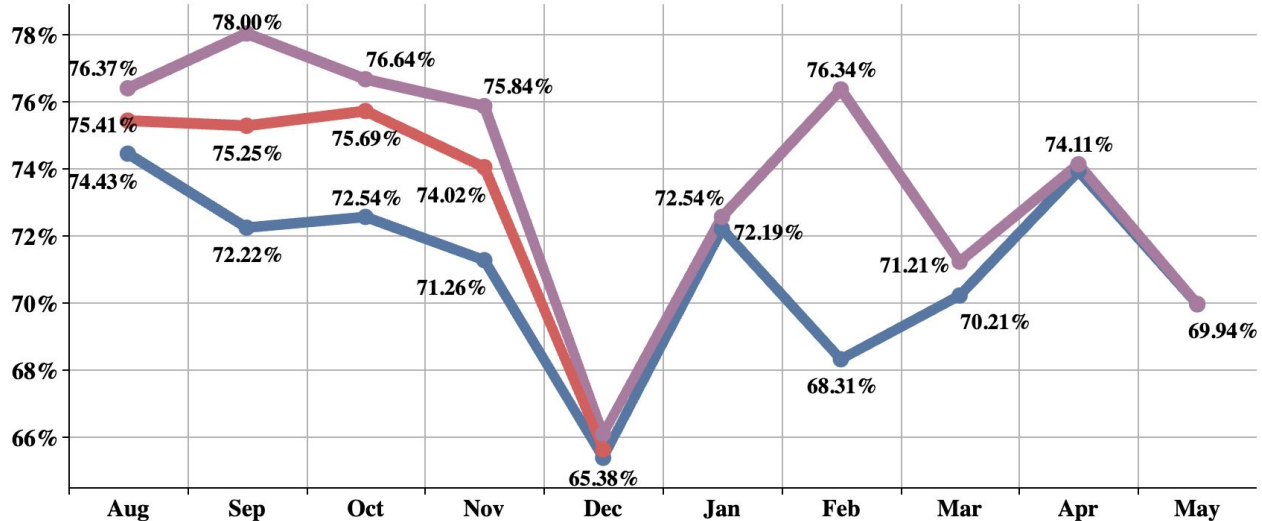
SCHOOL	K3	K4	K	1ST	2ND	3RD	4TH	5TH	6TH	7TH	8TH	9TH-12TH
AKP	165	165	300	300	315	315	330	345	345	345	345	345
PHO	150	180	330	330	330	360	360	360	360	336	336	336
NUI	180	180	360	360	360	360	360	360	360	343	343	343
PIZ	180	180	330	330	330	330	385	385	385	367	367	367
AIN	150	180	330	360	360	360	360	360	360	360	345	345
KAK	195	330	330	360	360	360	360	360	345	345	345	345
ATQ	180	180	315	315	330	330	345	360	360	345	345	345
IPK	140	150*	405	405	405	405	405	405				
HMS									360	360	360	
BHS												365
KLC												370**
						240 INSTRUCTIONAL MINUTES REQUIRED			300 INSTRUCTIONAL MINUTES REQUIRED			

*IPALOOK ELEMENTARY K4 IMMERSION: 405

**KIITA LEARNING COMMUNITY FRIDAY SCHEDULE: 390

Take-aways

Year(s): 24-25, 23-24, 22-23 | Month(s): All | Grade: All Students (Pre-K - 12)



All Grades

Growth Median and Distribution



Achievement Fall 2023-2024 Median and Distribution



Achievement Fall 2024-2025 Median and Distribution



849

Percentiles Key ● 1st - 20th ● 21st - 40th ● 41st - 60th ● 61st - 80th ● >80th