

ENROLLMENT PROJECTION

Independent School District 877
Buffalo-Hanover-Montrose

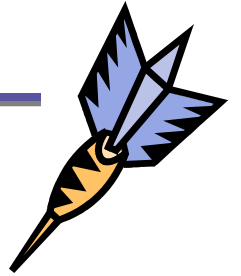
Tina Burkholder, Controller



Making a Difference!

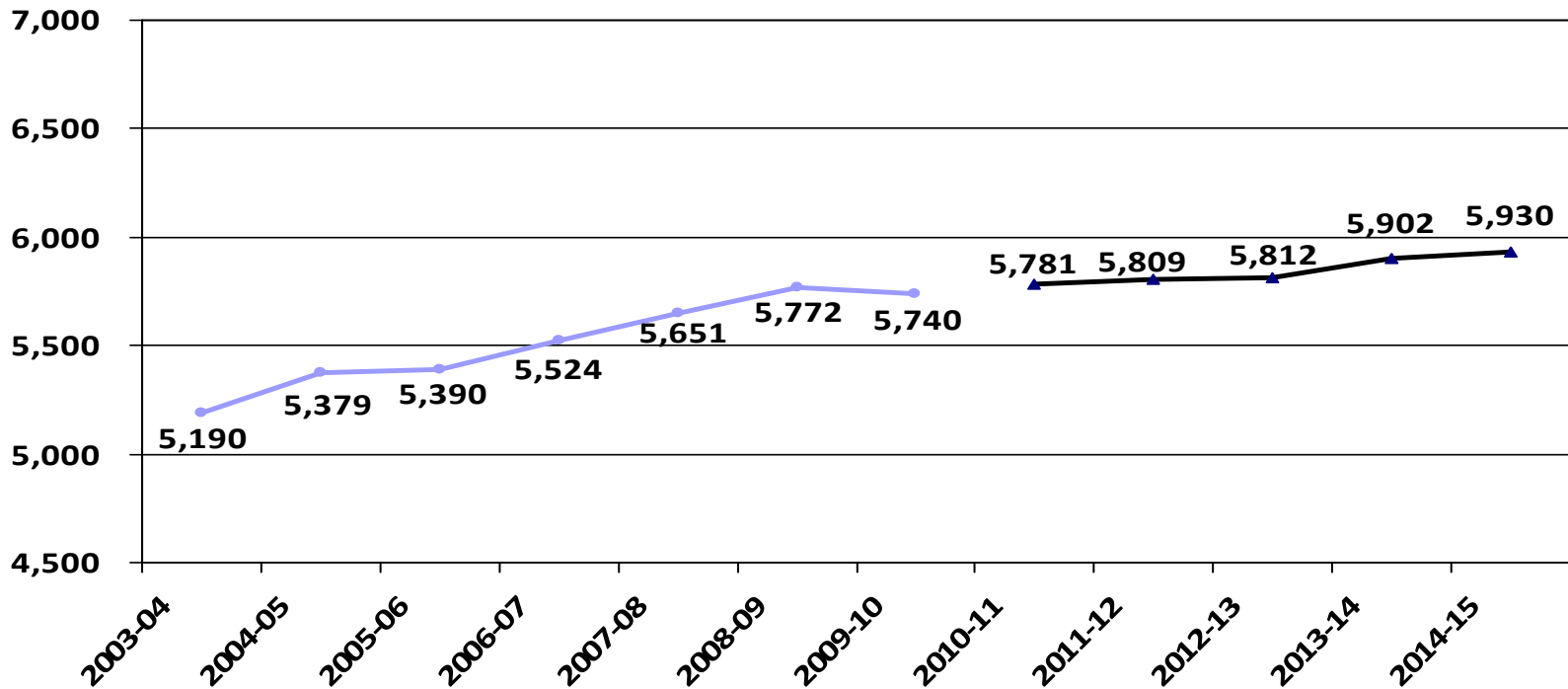
Enrollment Projection Report

- Review of K-12 enrollment as of Oct. 1st
- Open enrollment & tuition history
- Resident enrollment history
- Nonpublic enrollment
- Fall vs. spring enrollment
- Review 2009-10 enrollment projection
- 2010-11 enrollment projection





Historical and 2010-11 Projected K-12 Enrollment as of Oct. 1st





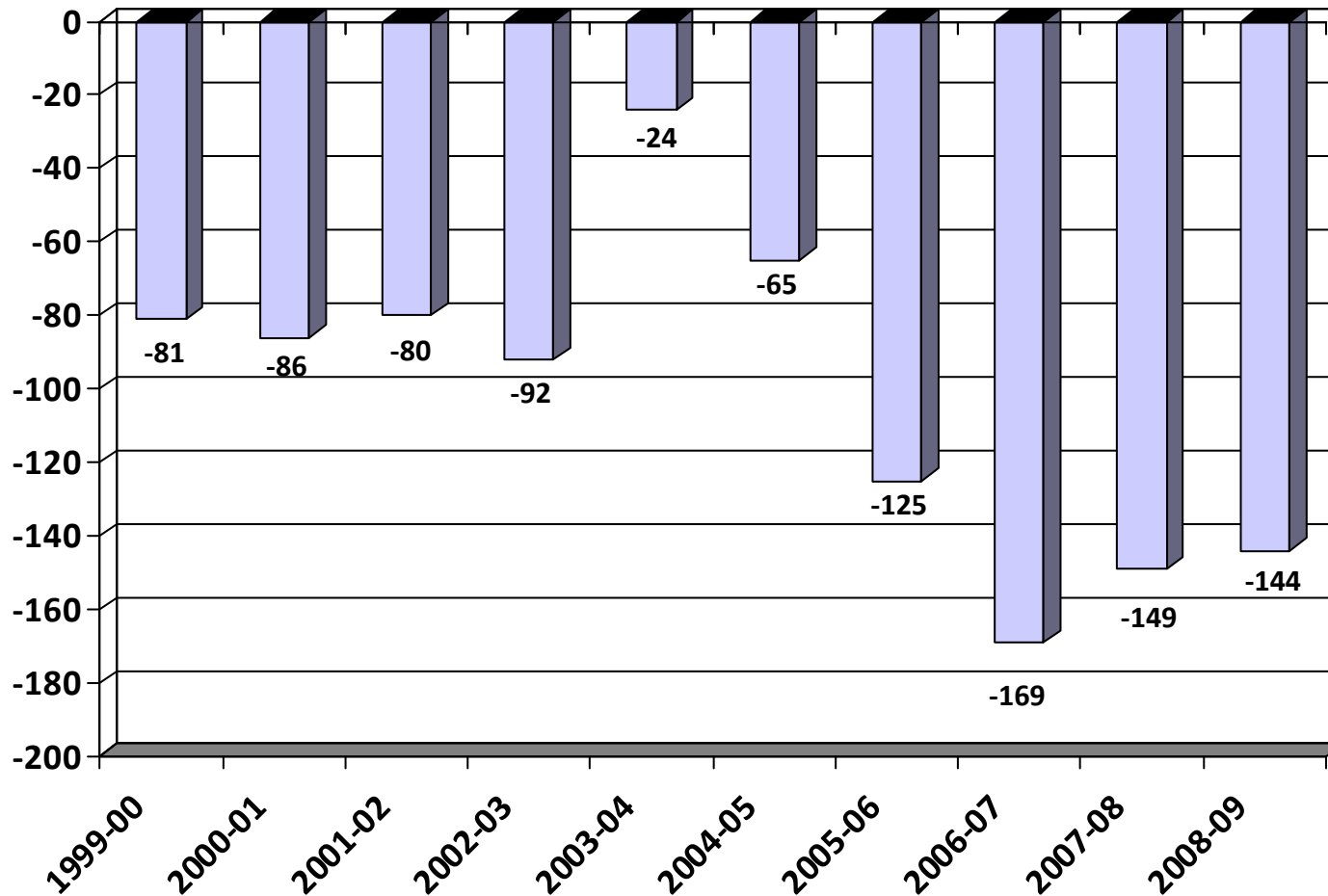
Review of K-12 Enrollment as of Oct. 1st

- The school district growth trend came to a halt in the 2009-10 school year with an decrease of 32 students
- The five-year growth average is currently 72 students/year or 1.32%
- Total enrollment growth for the past five years is 361 students or 6.71%

	2005-06	2006-07	2007-08	2008-09	2009-10
K-12 enrollment	5,390	5,524	5,651	5,772	5,740
Change over prior year	11	134	127	121	-32
% change	0.20%	2.49%	2.30%	2.14%	-0.55%

Open Enrollment & Tuition

Net Gain/Loss as of June 30th





2008-09 Open Enrollment & Tuition Gain/Loss by District as of June 30th

District	In	Out	Net
Delano	6	-84	-78
Rockford	35	-87	-52
Watertown-Mayer	3	-29	-26
Houston (online)	0	-23	-23
Orono	0	-8	-8
Elk River	27	-31	-4
Osseo	26	-28	-2
Annandale	9	-8	1
Monticello	29	-22	7
Anoka-Hennepin	15	-1	14
Howard Lake-Waverly	34	-13	21
Maple Lake	56	-34	22
St. Michael-Albertville	93	-30	63

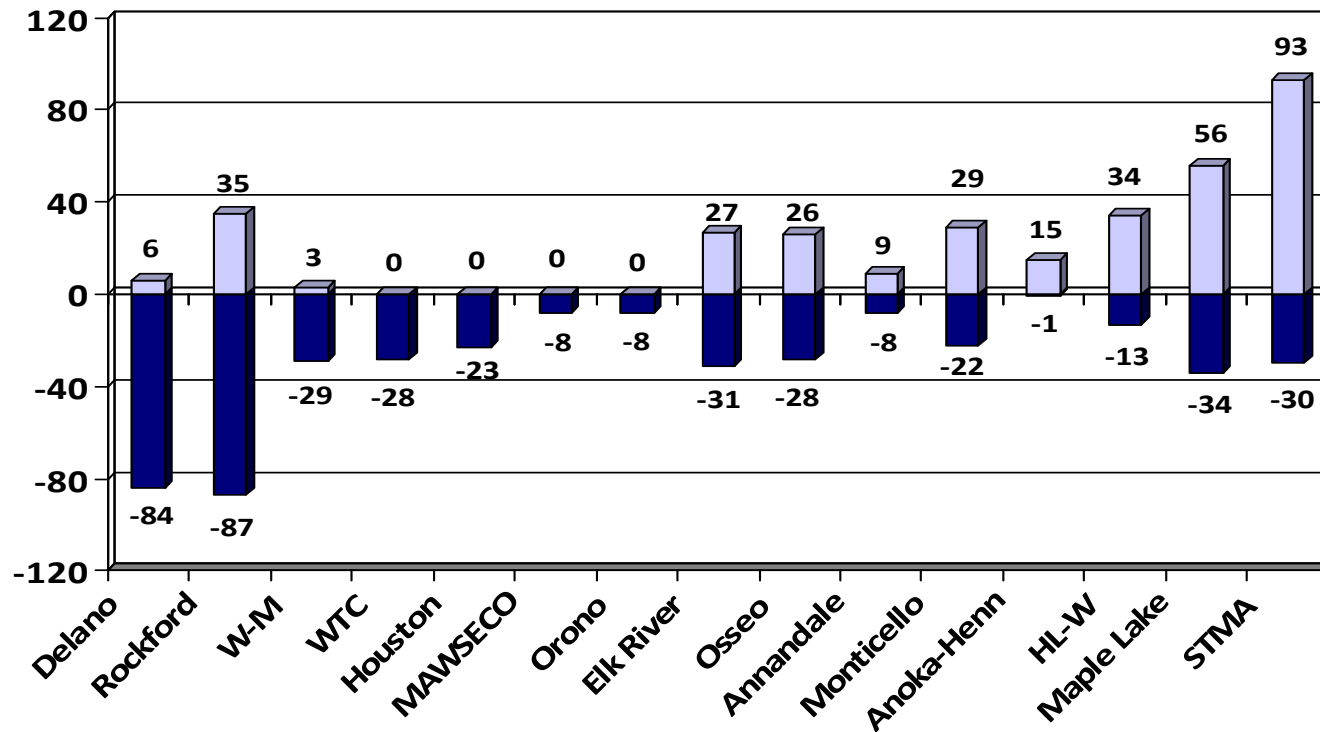
Other Tuition

WTC -28

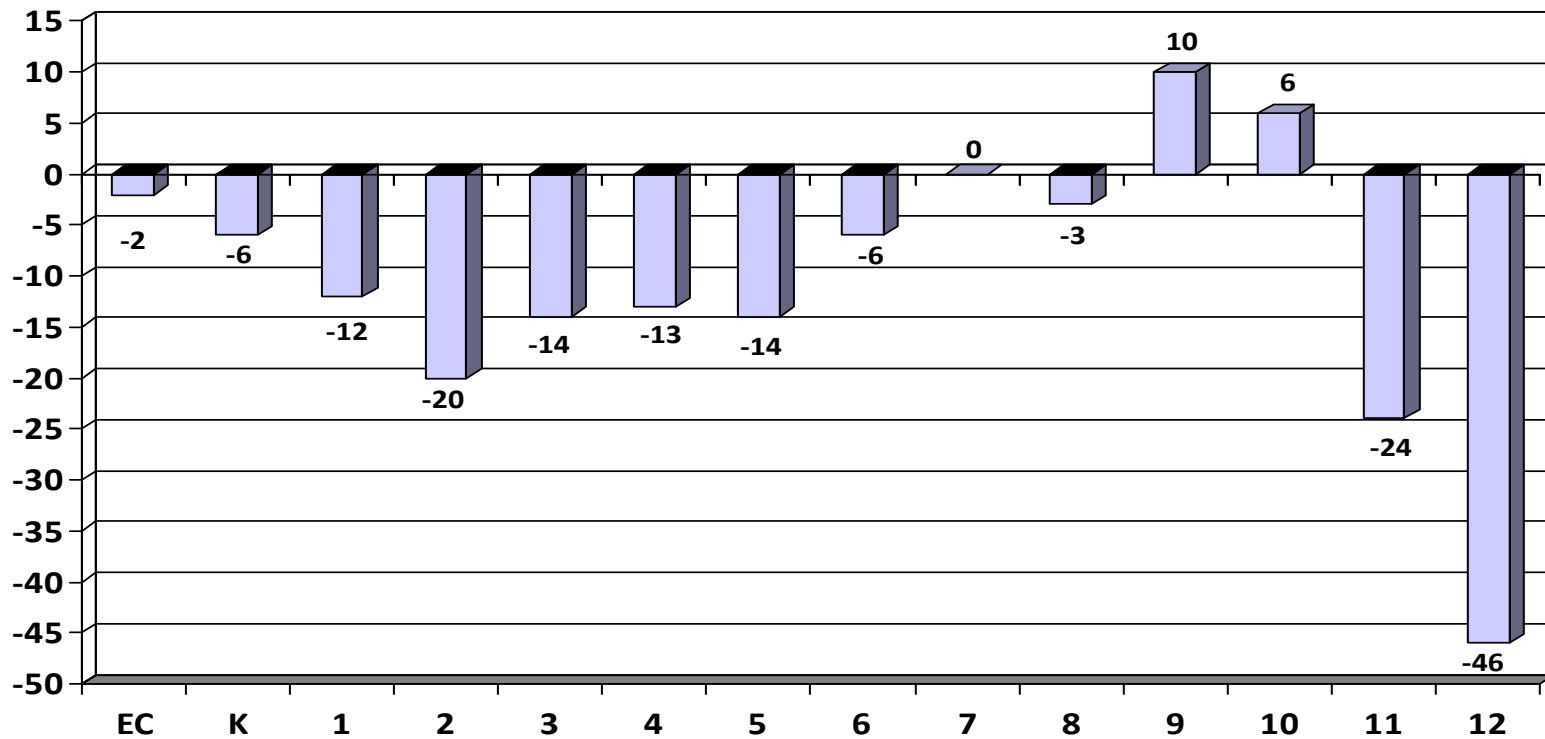
MAWSECO -8



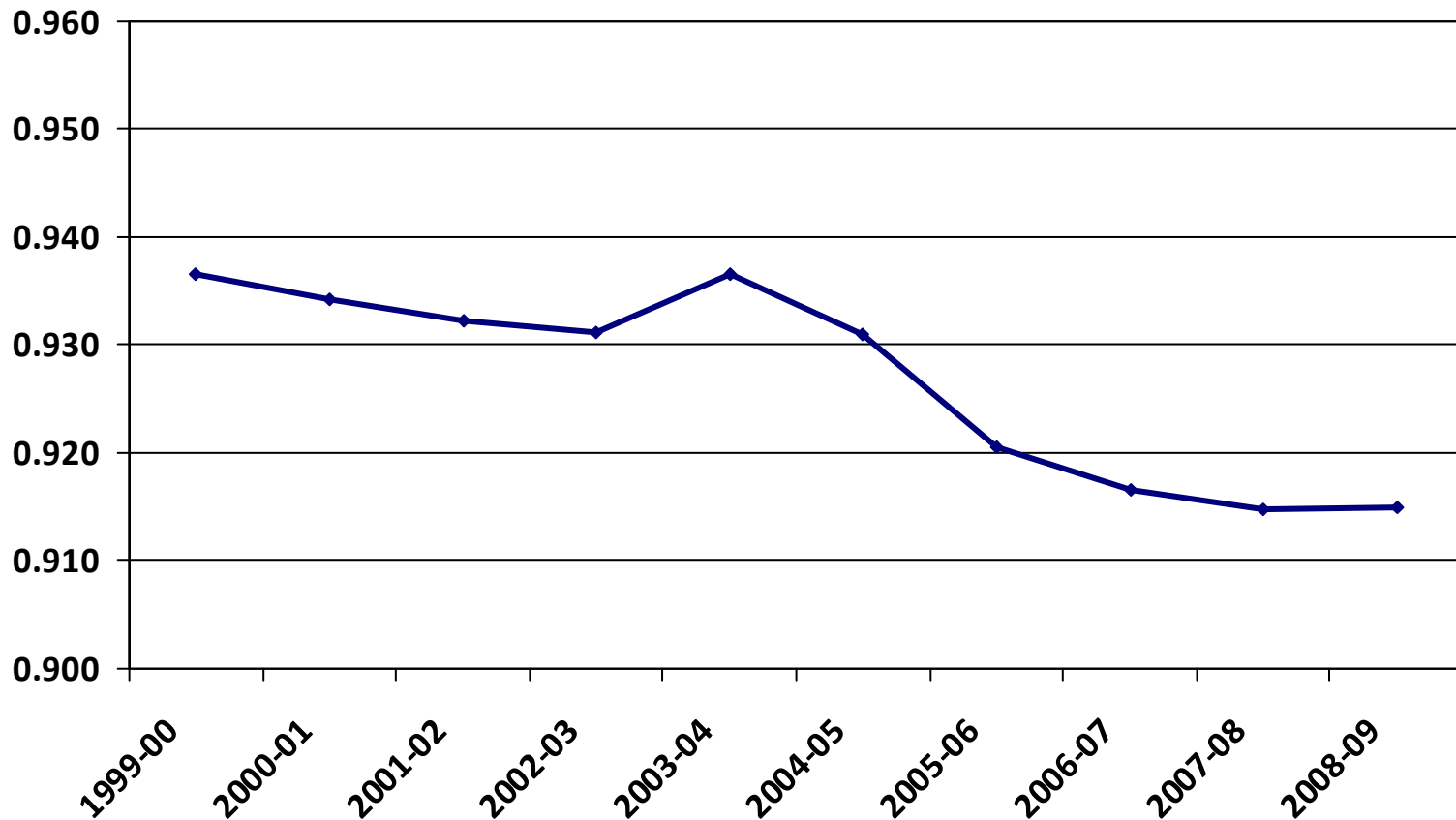
2008-09 Open Enrollment & Tuition Gain/Loss by District as of June 30th



2008-09 Open Enrollment & Tuition by Grade as of June 30th



Total Resident Students Enrolled in ISD 877 as of June 30th



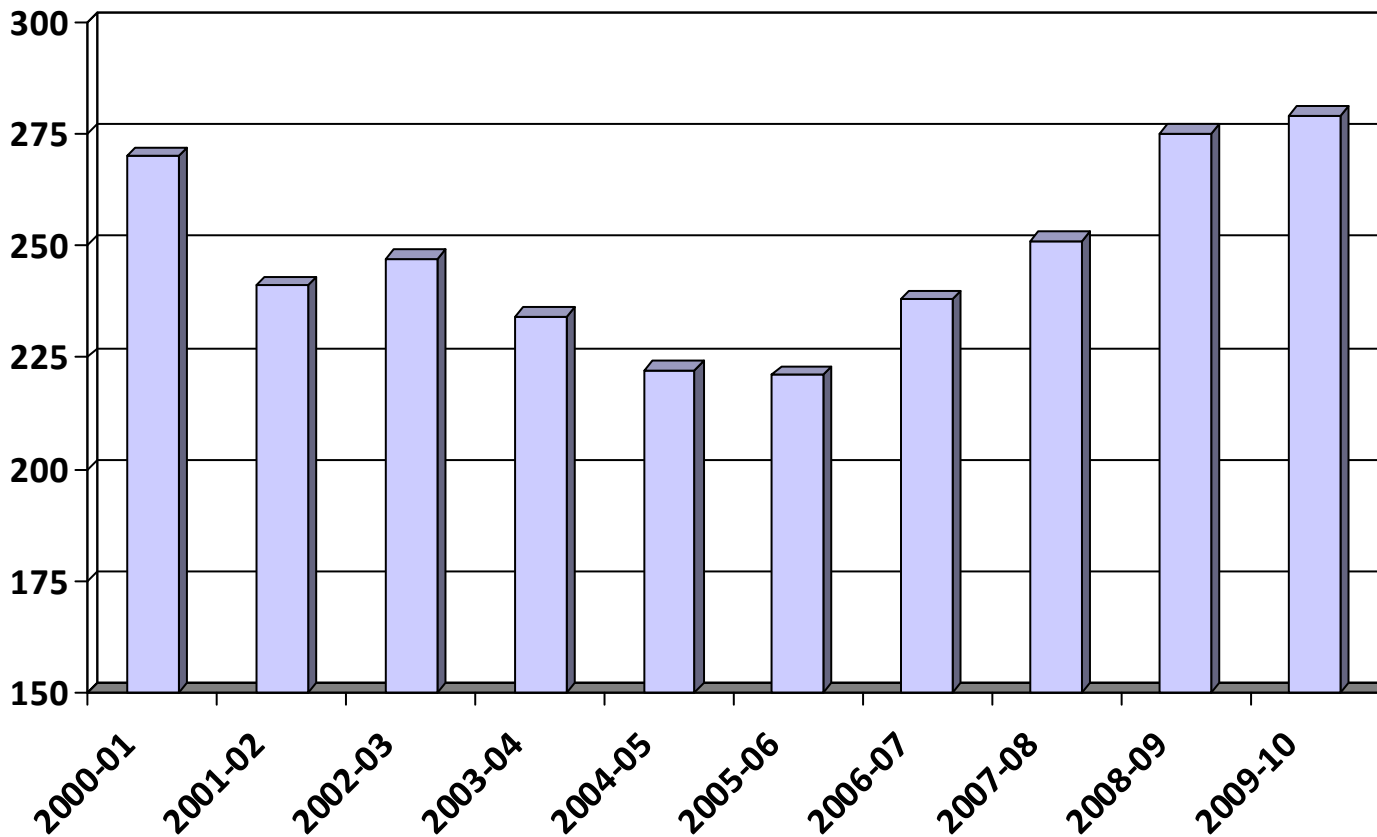


Nonpublic History

- Two nonpublic schools in the BHM district: St. Francis Xavier, Buffalo and Salem Lutheran, Loretto.
- Both schools serve students from kindergarten through 8th grade.

	00-01	01-02	02-03	03-04	04-05	05-06	06-07	07-08	08-09	09-10
Total	270	241	247	234	222	221	238	251	275	279
# Change	-1	-29	6	-13	-12	-1	17	13	24	4
% Change	-0.4	-10.7%	2.5%	-5.3%	-5.1%	-0.5%	7.7%	5.5%	9.6%	1.5%

Nonpublic History





2008-09 Enrollment Fall vs. Spring

- Historically, the district's K-12 enrollment decreases from October 1 to June 1.
- Most of the enrollment drops happen in grades 9-12.

	Oct. 1st, 2008	Jun. 1st, 2009	Net
K	464	464	0
Gr. 1-5	2,178	2,178	0
Gr. 6-8	1,289	1,265	-24
Gr. 9-12	1,841	1,757	-84
Total	5,772	5,664	-108



Historical Enrollment

Fall vs. Spring

- The district had one year of enrollment growth during the school year (2001-02) and one flat year (2006-07).

	K	Gr. 1-5	Gr. 6-8	Gr. 9-12	Net
2001-02	2	33	6	-35	6
2002-03	-1	33	14	-51	-5
2003-04	5	-37	-3	-49	-10
2004-05	-1	0	3	-55	-53
2005-06	4	-1	-9	-56	-62
2006-07	-2	-25	10	-33	0
2007-08	9	3	3	-55	-40
2008-09	0	0	-24	-84	-108



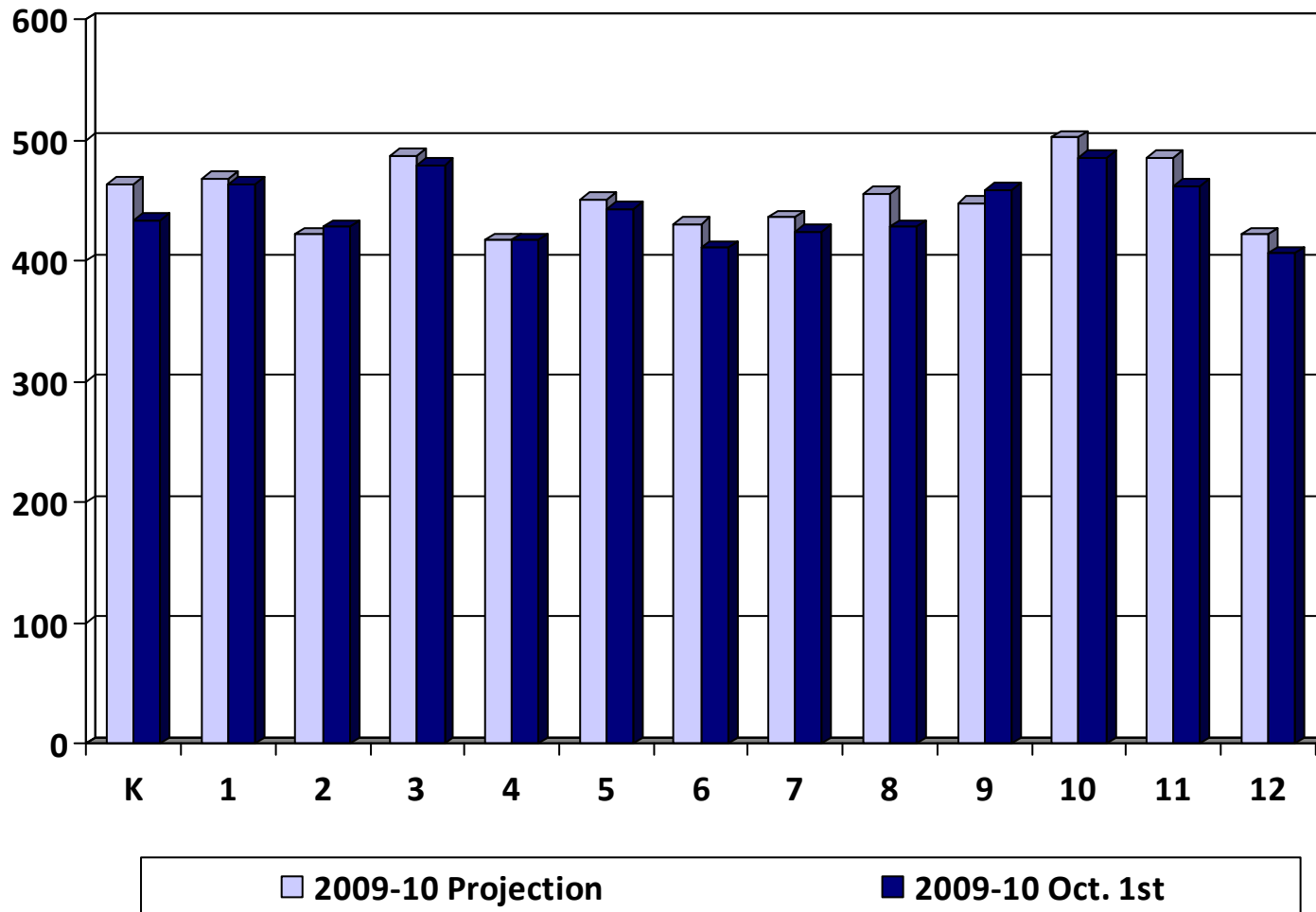
Review of 2009-10 Enrollment Projection

- Last year's enrollment projection was over-estimated by 150 students.
- Our internal monthly enrollment reports typically do not include post-secondary or shared time students.
- The official Oct. 1st MARSS submission by MDE will report a higher enrollment with post-secondary students.

	2009-10 Projection	2009-10 Oct. 1st	Difference
K	464	434	-30
Gr. 1-5	2,245	2,231	-14
Gr. 6-8	1,323	1,262	-61
Gr. 9-12	1,858	1,813	-45
Total	5,890	5,740	-150

Review of 2009-10

Enrollment Projection by Grade





Enrollment Projection Data

- The district uses the Schoolfinances.com enrollment projection model.
- The model allows schools to develop enrollment projections based on three different sets of data:
 - **October 1st MARSS submission**
 - **End of Year ADM** is generally used for financial forecast
 - **District Data** allows schools to enter enrollment history taken at any time, resident ADM or any other historical data by grade



Kindergarten Projection Methods

- **Hold constant** maintains the 2009-10 kindergarten level.
- **Linear projection** is a straightforward mathematical projection based on nothing more than the past five years of data.
- **County birth method** uses the total number of live births in Wright County and examines what percentage of those births enroll in kindergarten. The projection is based on the average percentage of the last four years.
- **Zip code method** examines the zip codes in the district and uses a linear projection of live births on the last four years of data and computes the projected enrollment based on the lowest, average, and highest ratios.



Kindergarten Projection Methods

Birth Year	Kdgn Enroll Year	Wright Co. Births	BHM Zip Code Births	Actual Kdgn Enrollment	% of Wright Co. Births Enrolled
1998	2003	1,372	277	367	26.7%
1999	2004	1,406	333	429	30.5%
2000	2005	1,423	326	413	29.0%
2001	2006	1,499	348	494	33.0%
2002	2007	1,679	428	413	24.6%
2003	2008	1,926	471	464	24.1%
2004	2009	1,888	491	434	23.0%
2005	2010	2,023	523	465*	23.0%*
2006	2011	2,152	494	495*	23.0%*
2007	2012	2,183	553	502*	23.0%*
2008	2013	2,095	492	482*	23.0%*

Kindergarten Projection Methods

- Using Oct. 1st district data

	05-06	06-07	07-08	08-09	09-10	10-11	11-12	12-13	13-14	14-15
Actual enrollment	412	495	413	464	434					
Hold constant						434	434	434	434	434
Linear projection						448	449	450	451	453
Wright Co. births						494	530	563	571	548
Zip code method - L						434	462	437	489	435

Enrollment Projection Methods

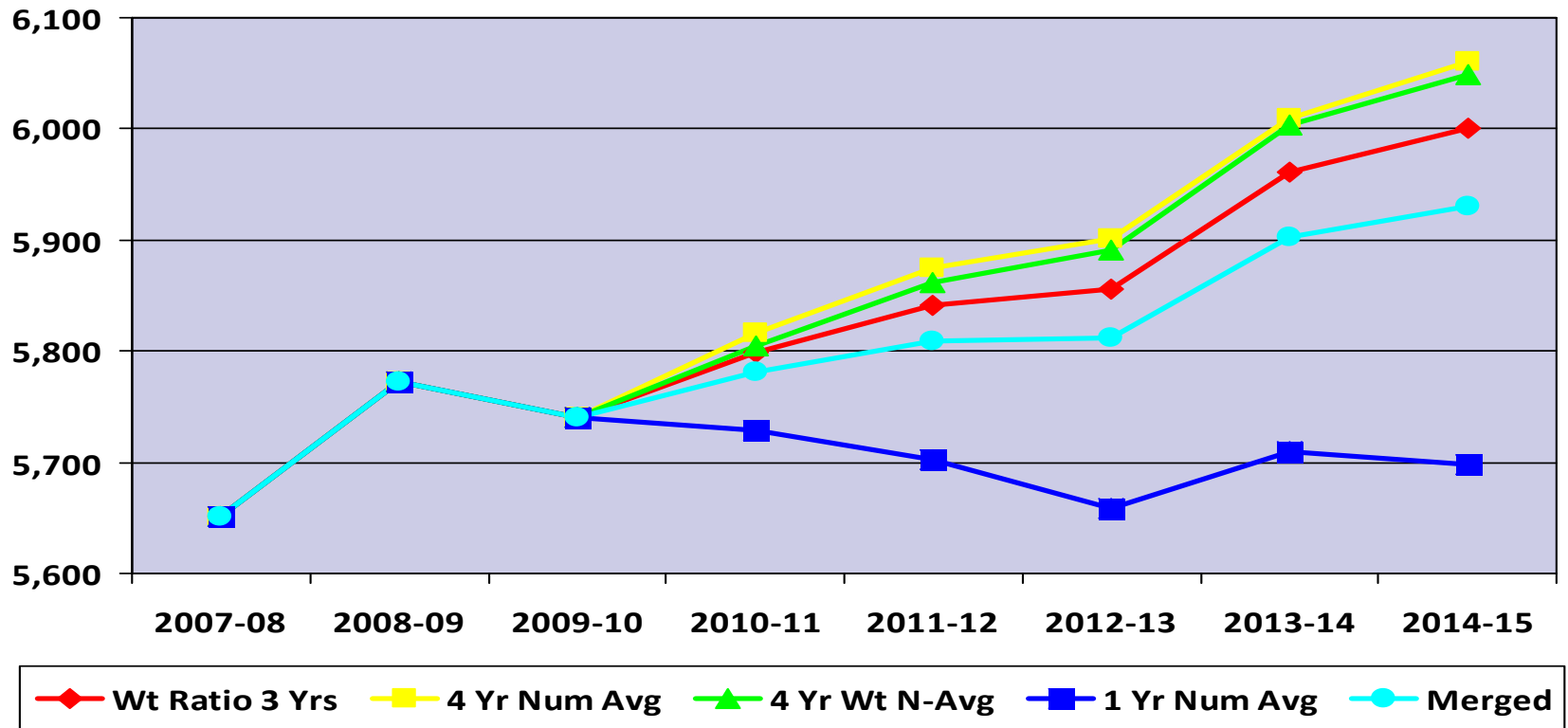
- After the kindergarten enrollment projection is complete, the overall K-12 enrollment is determined by a variety of methods:
 - Cohort Survival Method
 - Weighted Cohort Survival Method
 - Numerical Survival Method
 - Weighted Numerical Survival Method
 - Merged Method

Projection Methods Comparison

- Using Oct. 1st district data, seventeen different variations were examined.
- The following five were selected for detailed analysis:

	07-08	08-09	09-10	10-11	11-12	12-13	13-14	14-15
Wt Ratio 3 Yrs	5,651	5,772	5,740	5,799	5,841	5,856	5,961	6,001
4 Yr Num Avg	5,651	5,772	5,740	5,817	5,875	5,901	6,009	6,060
4 Yr Wt N-Avg	5,651	5,772	5,740	5,804	5,862	5,891	6,003	6,049
1 Yr Num Avg	5,651	5,772	5,740	5,729	5,702	5,659	5,710	5,698
Merged	5,651	5,772	5,740	5,781	5,809	5,812	5,902	5,930
Max Difference				88	173	242	299	362

Projection Methods Comparison

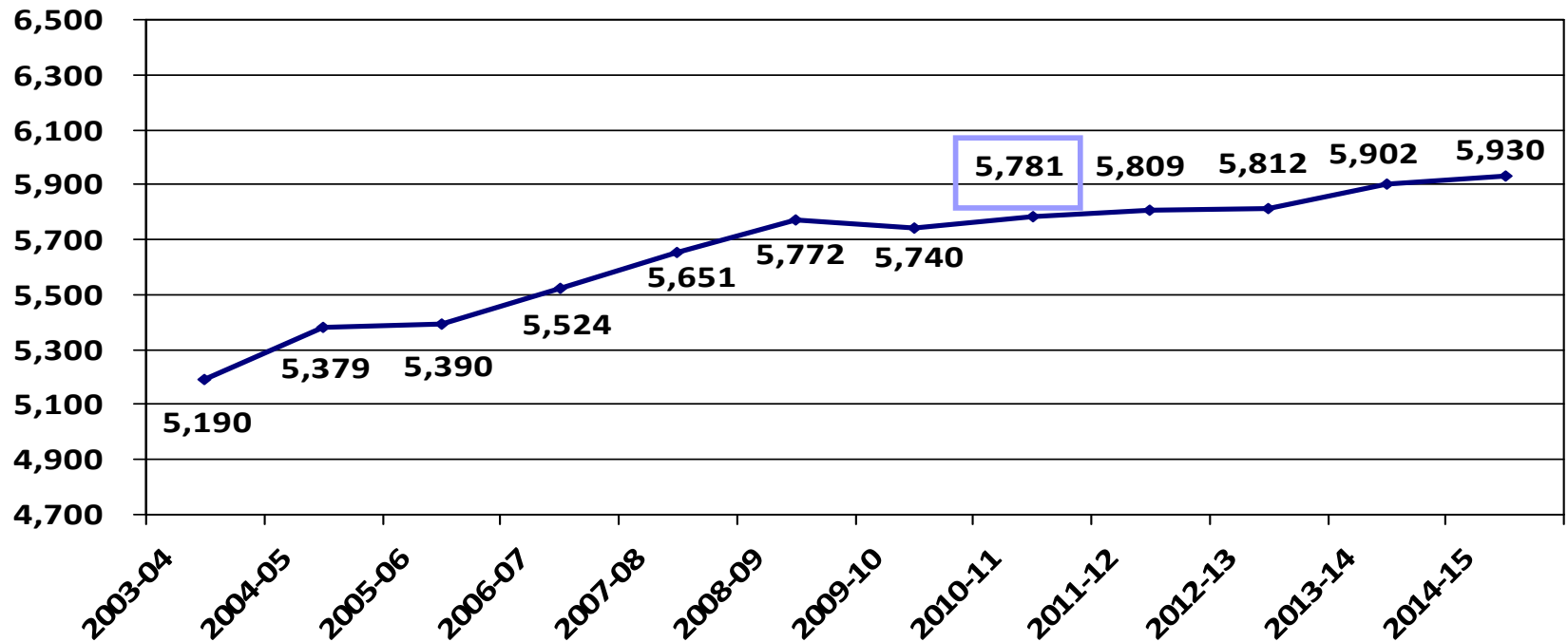




2010-11 Enrollment Projection

- Factors considered: housing market, economic conditions, Wright County births, and budget reductions
- Merged Method
- K-12 Enrollment 5,781
- Increase of 41 students or 0.72%

2010-11 Enrollment Projection



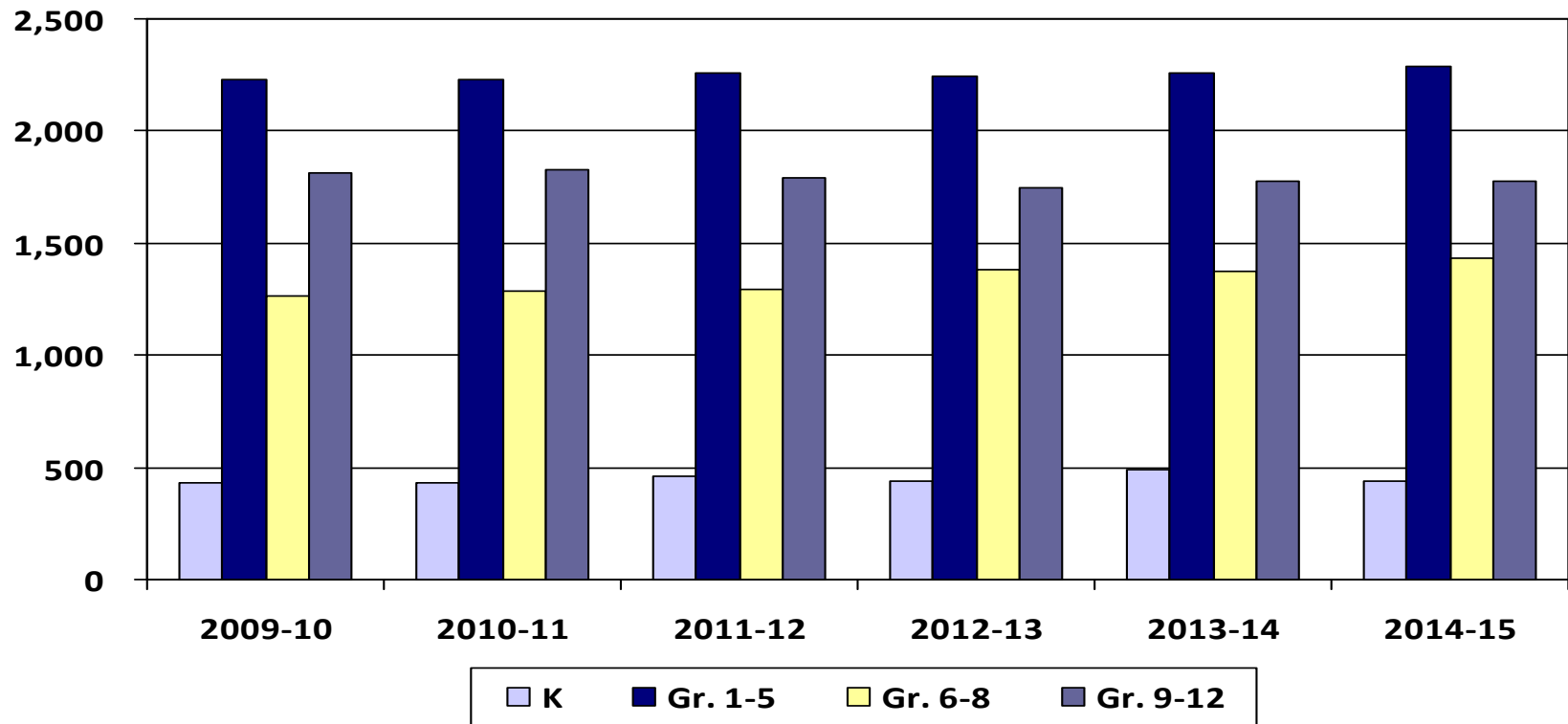


2010-11 Enrollment Projection by Grade Groupings

- With future enrollments, need to consider building capacity:
 - BHS – 1,935 PHX – 64 and PRIDE - 25
 - BCMS – 1,375
 - Elementary – 3,200

	2009-10	2010-11	2011-12	2012-13	2013-14	2014-15
K	434	434	462	437	489	435
Gr. 1-5	2,231	2,232	2,260	2,247	2,259	2,286
Gr. 6-8	1,262	1,286	1,297	1,383	1,377	1,432
Gr. 9-12	1,813	1,829	1,790	1,745	1,777	1,777
Total	5,740	5,781	5,809	5,812	5,902	5,930
		41	28	3	90	28
		0.72%	0.48%	0.05%	1.55%	0.48%

2010-11 Enrollment Projection by Grade Groupings

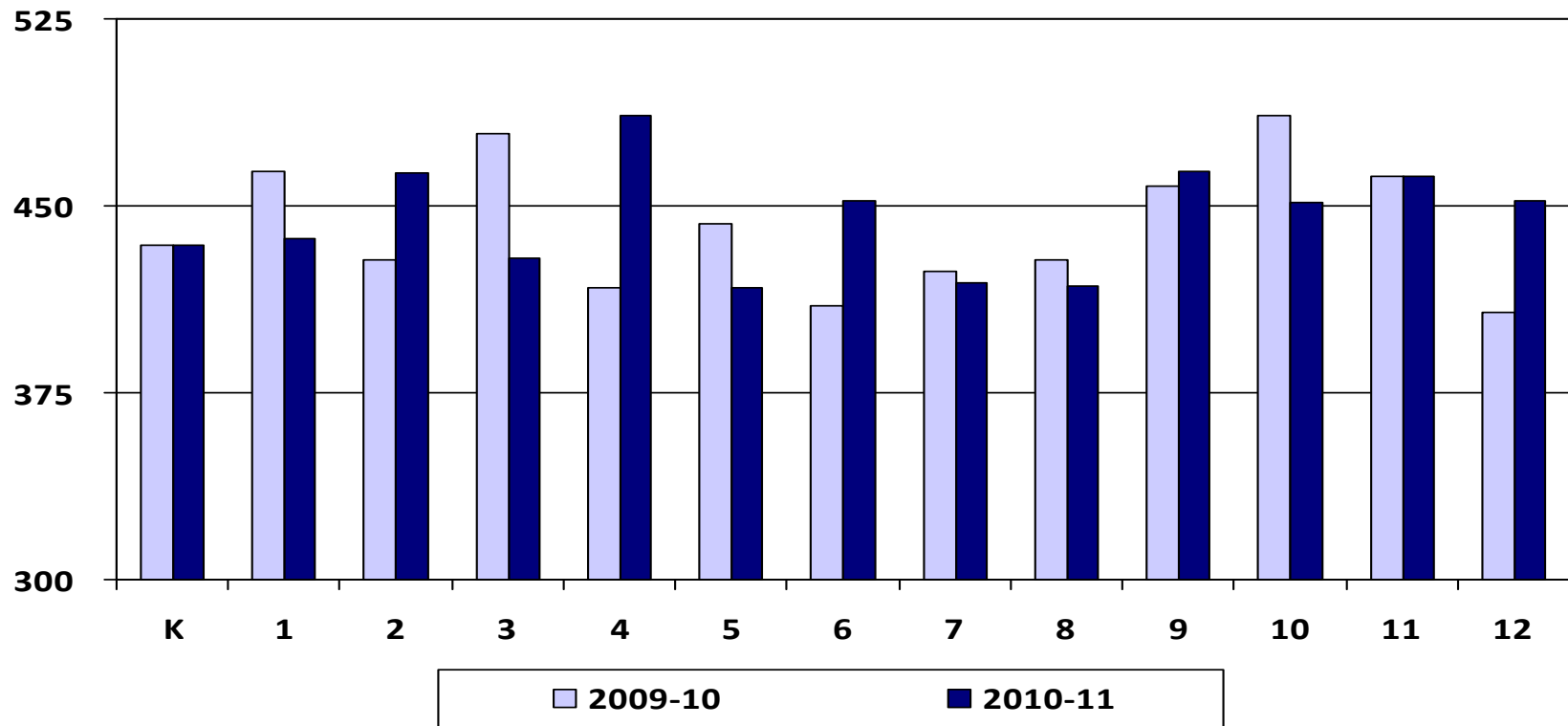




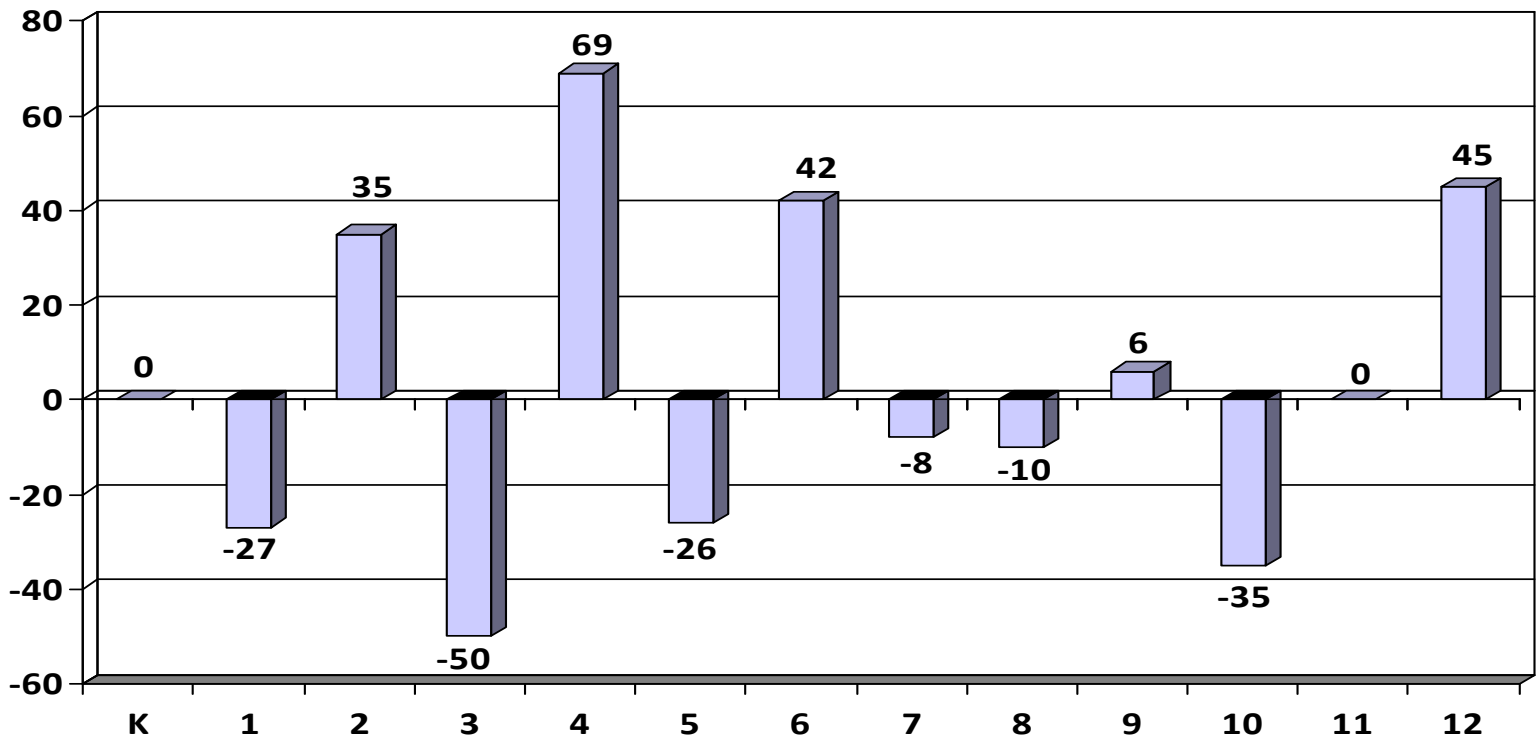
2010-11 Enrollment Projection by Grade

	2009-10	2010-11	2011-12	2012-13	2013-14	2014-15
K	434	434	462	437	489	435
1	464	437	437	465	439	492
2	428	463	436	436	465	439
3	479	429	465	438	438	466
4	417	486	436	472	444	444
5	443	417	486	436	473	445
6	410	452	427	496	446	482
7	424	416	459	433	503	453
8	428	418	411	454	428	497
9	458	464	452	446	489	463
10	486	451	458	446	439	483
11	462	462	428	435	424	417
12	407	452	452	418	425	414
Total	5,740	5,781	5,809	5,812	5,902	5,930

2009-10 & 2010-11 Enrollment Projection by Grade



2010-11 Enrollment Change by Grade





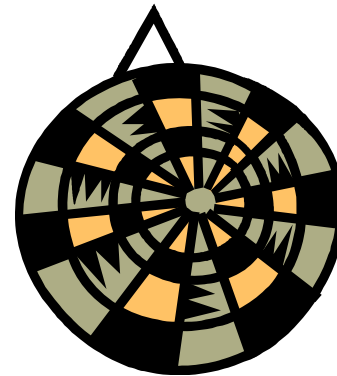
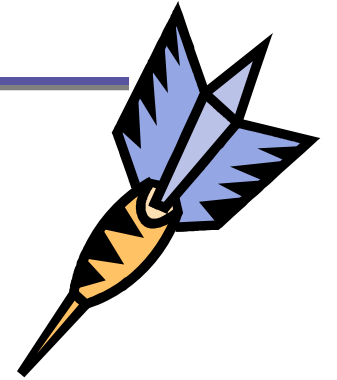
WADM Report

- The weighted average daily membership (WADM) projection shows a steady growth in student aid.
- Keep in mind the district's enrollment history tends to decline from Oct. 1st to June 1st.

	2009-10		2010-11		2011-12		2012-13	
	Enroll	WADM	Enroll	WADM	Enroll	WADM	Enroll	WADM
HK	26	26	26	26	27	27	26	26
K	408	250	408	250	435	266	411	251
Gr. 1-3	1,371	1,529	1,329	1,482	1,338	1,492	1,339	1,493
Gr. 4-6	1,270	1,346	1,355	1,436	1,349	1,430	1,404	1,488
Gr. 7-8	852	1,108	834	1,084	870	1,131	887	1,153
Gr. 9-12	1,813	2,357	1,829	2,378	1,790	2,327	1,745	2,269
ECSE	113	141	113	141	120	150	114	143
Total	5,853	6,757	5,894	6,797	5,929	6,823	5,926	6,823

Conclusion

- Uncertain economic factors make enrollment projections difficult.
- BHM's enrollment is projected to remain relatively flat for the next three years.



5,781