

**Applegate  
School**

# Cougar Tracks

Office Contact Number 541-846-6280

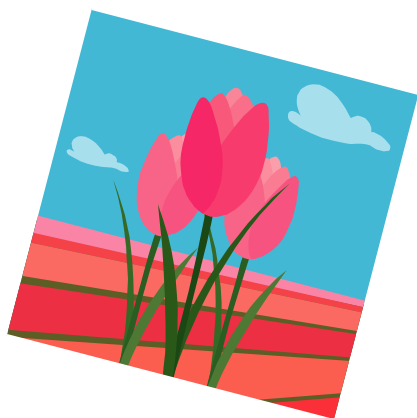


*School Hours ~*

*Grades K-5 8:10 to 2:35 Grades 6-8 8:10 to 2:40*

## ***Girls Basketball !!!***

This year the Girls Basketball team has had one of the best years here at Applegate. We have broken the streak of losing last year and are winning most of our games. The record so far is 6-3 with one game remaining in the season. This years coaches are Austin Bristow and Paula Fisher. The team consists of three fifth graders, four sixth graders, 1 seventh grader and three eighth grader. Nice teamwork girls and Coaches!!!! By Marissa Elmore and Emily Carpenter.



## **OAKS Testing !!!**

We are nearing the completion of the first test opportunity with OAKS testing—

Because the time frames for each grades test dates, it is important to have your students at school on time, feeling refreshed and ready to go! When surveyed some of the students' comments

regarding testing were "...This week I passed my math OAKS. It was hard at first but I pushed through" and "OAKS are a serious thing..." Thanks Gabe V. and Josh L for your thoughts!



### **Special points of interest:**

- Cougar News— Page 1
- Page 2—Library News
- Page 3—Updated District Calendar
- Page 4—Drama Production—Shae W.

***Please be sure to view the attached and updated District Calendar....our official Last Day of School has been adjusted!!!***

# Applegate School Library News

March 2014



MRS. DISTEFANO'S 1ST GRADE STUDENTS ARE  
BOOK REVIEWERS!

**SUPERSTAR**  
TOTAL OF  
LAST MONTH! **WOW!!!**

THEY TURNED IN A  
**18** BOOK REVIEWS



Happy St. Patrick's Day



Guest Book Reviewer: Marly Marcoulier

**DOUBLE IDENTITY** by Margaret Peterson Haddix

This book is about a girl named Bethany and her parents, who she knows are keeping a secret from her. She finally finds out what the shocking secret is when she is at her Aunt Myrila's house. My favorite part is when she finds out. This is a really good mystery book!



MARK YOUR  
CALENDARS FOR OUR  
NEXT BOOK FAIR  
MAY 12-16 !!

**REMINDER!**  
Overdue Library books  
incur fines of a-nickel-  
a-day for Middle  
School students!

READING IS AN INVESTMENT

JUST DO IT!!

STUDENTS STILL HAVE TWO MONTHS TO ENTER!  
FINAL TURN IN DEADLINE IS APRIL 30!



# Three Rivers School District 2013—2014 Student Calendar

Revision 2-18-2014

## July 2013

| Sun | Mon | Tue | Wed | Thu | Fri | Sat |
|-----|-----|-----|-----|-----|-----|-----|
|     | 1   | 2   | 3   | 4   | 5   | 6   |
| 7   | 8   | 9   | 10  | 11  | 12  | 13  |
| 14  | 15  | 16  | 17  | 18  | 19  | 20  |
| 21  | 22  | 23  | 24  | 25  | 26  | 27  |
| 28  | 29  | 30  | 31  |     |     |     |

## August 2013

| Sun | Mon | Tue | Wed | Thu | Fri | Sat |
|-----|-----|-----|-----|-----|-----|-----|
|     |     |     |     | 1   | 2   | 3   |
| 4   | 5   | 6   | 7   | 8   | 9   | 10  |
| 11  | 12  | 13  | 14  | 15  | 16  | 17  |
| 18  | 19  | 20  | 21  | 22  | 23  | 24  |
| 25  | 26  | 27* | 28  | 29  | 30  | 31  |

## September

| Sun | Mon | Tue | Wed | Thu | Fri | Sat |
|-----|-----|-----|-----|-----|-----|-----|
| 1   | 2   | 3   | 4   | 5   | 6   | 7   |
| 8   | 9   | 10  | 11  | 12  | 13  | 14  |
| 15  | 16  | 17  | 18  | 19  | 20  | 21  |
| 22  | 23  | 24  | 25  | 26  | 27  | 28  |
| 29  | 30  |     |     |     |     |     |

## October

| Sun | Mon | Tue | Wed | Thu | Fri | Sat |
|-----|-----|-----|-----|-----|-----|-----|
|     |     | 1   | 2   | 3   | 4   | 5   |
| 6   | 7   | 8   | 9   | 10  | 11  | 12  |
| 13  | 14  | 15  | 16  | 17  | 18  | 19  |
| 20  | 21  | 22  | 23  | 24  | 25  | 26  |
| 27  | 28  | 29  | 30  | 31  |     |     |

## November 2013

| Sun | Mon | Tue | Wed | Thu | Fri | Sat |
|-----|-----|-----|-----|-----|-----|-----|
|     |     |     |     |     | 1   | 2   |
| 3   | 4   | 5   | 6   | 7   | 8   | 9   |
| 10  | 11  | 12  | 13  | 14  | 15  | 16  |
| 17  | 18  | 19  | 20  | 21* | 22  | 23  |
| 24  | 25  | 26  | 27  | 28  | 29  | 30  |

## December 2013

| Sun | Mon | Tue | Wed | Thu | Fri | Sat |
|-----|-----|-----|-----|-----|-----|-----|
| 1   | 2   | 3   | 4   | 5   | 6   | 7   |
| 8   | 9   | 10  | 11  | 12  | 13  | 14  |
| 15  | 16  | 17  | 18  | 19  | 20  | 21  |
| 22  | 23  | 24  | 25  | 26  | 27  | 28  |
| 29  | 30  | 31  |     |     |     |     |

| GRADE PERIODS                    |          |            |             |  |  |  |
|----------------------------------|----------|------------|-------------|--|--|--|
| 1st TRIMESTER - SEPT 3 - NOV. 30 | =        | 56         | DAYS        |  |  |  |
| 2nd TRIMESTER - DEC 2 - MAR 13   | =        | 56         | DAYS        |  |  |  |
| 3rd TRIMESTER - MAR 17 - JUN 11  | =        | 52         | DAYS        |  |  |  |
| <b>TOTAL DAYS</b>                | <b>=</b> | <b>164</b> | <b>DAYS</b> |  |  |  |

|                     |            |   |
|---------------------|------------|---|
| 26                  | Mon.       | Teachers Report / Inservice Day   |
| 27                  | Tues.      | Inservice/*Staff Development Day  |
| 28/29               | Wed/Thur.  | Inservice Days  |
| 30                  | Fri.       | District Closure Day  |
| <b>SEPTEMBER</b>    |            |   |
| 2                   | Mon.       | Labor Day—Holiday   |
| 3                   | Tues.      | First Day of Classes  |
| <b>OCTOBER</b>      |            |   |
| 10                  | Thur.      | Progress Reports Out  |
| 11                  | Fri.       | State-wide Inservice Day - Non-Contract - No Classes                            |
| 18                  | Fri.       | MS-HS Conferences/Elem. Staff Develop. Day (No School Day for All Students)     |
| <b>NOVEMBER</b>     |            |   |
| 11                  | Mon.       | Veteran's Day Observed - No Classes   |
| 21                  | Thur.      | End of First Trimester (56 days)  |
| 22                  | Fri.       | Clerical Day—No Classes   |
| 25-27               | Mon-Wed.   | District Closure Days   |
| 28                  | Thur.      | Thanksgiving Day - No Classes   |
| 29                  | Fri.       | Vacation Day - No Classes   |
| <b>DECEMBER</b>     |            |   |
| 6                   | Fri.       | Elem. Conferences/MS-HS Staff Develop. Day (No School Day for All Students)     |
| 6-13                | Fri-Fri    | District Closure Days (Due to Ice Conditions)                                   |
| 20                  | Fri.       | Last Day of Classes Before Winter Break   |
| 12/23-1/5           |            | Winter Break  |
| <b>JANUARY 2014</b> |            |   |
| 1                   | Wed.       | New Years Day—No School   |
| 2-3                 | Thur.-Fri. | Winter Break Continues  |
| 6                   | Mon.       | Classes Resume  |
| 20                  | Mon.       | Martin Luther King Day - Non-Contract, No Classes                               |
| 30                  | Thur.      | Progress Reports Out  |
| <b>FEBRUARY</b>     |            |   |
| 7                   | Fri.       | MS-HS Conferences/Elem. Staff Develop. Day (No School Day for All Students)     |
| 17                  | Mon.       | President's Day Holiday - No Classes  |
| <b>MARCH</b>        |            |   |
| 13                  | Thurs.     | End of Second Trimester (56 days)   |
| 14                  | Fri.       | Clerical Day—No Classes   |
| 17                  | Mon.       | Elem. Conferences/MS-HS Staff Develop. Day (No School Day for All Students)     |
| 3/24-3/28           |            | Spring Break Vacation - No Classes  |
| <b>APRIL</b>        |            |   |
| 24                  | Thur.      | Progress Reports Out  |
| <b>MAY</b>          |            |   |
| 2                   | Fri.       | District-Directed Curriculum Day (No Classes for Elem., Middle & High Students) |
| 26                  | Mon.       | Memorial Day - No Classes   |
| <b>JUNE</b>         |            |   |
| 11                  | Wed.       | Last Day of School for Students (57 days/3rd Trl.)                              |
| 12                  | Thurs.     | District-Directed Curriculum Day  |
| 13                  | Fri.       | Clerical Day-Last Day for Teachers  |

- Paid Holiday-No Classes
- Clerical Day-No Classes
- MS-HS Conferences/Elem Staff Dev
- Elem. Conferences/MS-HS Staff Dev.
- District Directed Curriculum Day
- District Closure Days
- Vacation Day-No Classes
- Progress Reports Out
- Inservice Days
- Non-Paid Day

**NOTE: Staff Furlough Days Are Not Included On This Calendar—those days will be shown on individualized work calendars.**

## January 2014

| Sun | Mo | Tue | Wed | Thu | Fri | Sat |
|-----|----|-----|-----|-----|-----|-----|
|     |    |     | 1   | 2   | 3   | 4   |
| 5   | 6  | 7   | 8   | 9   | 10  | 11  |
| 12  | 13 | 14  | 15  | 16  | 17  | 18  |
| 19  | 20 | 21  | 22  | 23  | 24  | 25  |
| 26  | 27 | 28  | 29  | 30  | 31  |     |

## February 2014

| Sun | Mon | Tue | Wed | Thu | Fri | Sat |
|-----|-----|-----|-----|-----|-----|-----|
|     |     |     |     |     |     | 1   |
| 2   | 3   | 4   | 5   | 6   | 7   | 8   |
| 9   | 10  | 11  | 12  | 13  | 14  | 15  |
| 16  | 17  | 18  | 19  | 20  | 21  | 22  |
| 23  | 24  | 25  | 26  | 27  | 28  |     |

## March 2014

| Sun | Mon | Tue | Wed | Thu | Fri | Sat |
|-----|-----|-----|-----|-----|-----|-----|
|     |     |     |     |     |     | 1   |
| 2   | 3   | 4   | 5   | 6   | 7   | 8   |
| 9   | 10  | 11  | 12  | 13* | 14  | 15  |
| 16  | 17  | 18  | 19  | 20  | 21  | 22  |
| 23  | 24  | 25  | 26  | 27  | 28  | 29  |
| 30  | 31  |     |     |     |     |     |

## April 2014

| Sun | Mon | Tue | Wed | Thu | Fri | Sat |
|-----|-----|-----|-----|-----|-----|-----|
|     |     | 1   | 2   | 3   | 4   | 5   |
| 6   | 7   | 8   | 9   | 10  | 11  | 12  |
| 13  | 14  | 15  | 16  | 17  | 18  | 19  |
| 20  | 21  | 22  | 23  | 24  | 25  | 26  |
| 27  | 28  | 29  | 30  |     |     |     |

## May 2014

| Sun | Mo | Tue | Wed | Th | Fri | Sat |
|-----|----|-----|-----|----|-----|-----|
|     |    |     |     | 1  | 2   | 3   |
| 4   | 5  | 6   | 7   | 8  | 9   | 10  |
| 11  | 12 | 13  | 14  | 15 | 16  | 17  |
| 18  | 19 | 20  | 21  | 22 | 23  | 24  |
| 25  | 26 | 27  | 28  | 29 | 30  | 31  |

## June 2014

| Sun | Mon | Tue | Wed | Thu | Fri | Sat |
|-----|-----|-----|-----|-----|-----|-----|
| 1   | 2   | 3   | 4   | 5   | 6   | 7   |
| 8   | 9   | 10  | 11* | 12  | 13  | 14  |
| 15  | 16  | 17  | 18  | 19  | 20  | 21  |
| 22  | 23  | 24  | 25  | 26  | 27  | 28  |
| 29  | 30  |     |     |     |     |     |

| QUARTERLY REPORT             |          |            |             |  |  |  |
|------------------------------|----------|------------|-------------|--|--|--|
| 1st Quarter - JUL 1 - SEP 30 | =        | 20         | DAYS        |  |  |  |
| 2nd Quarter - OCT 1 - DEC 31 | =        | 45         | DAYS        |  |  |  |
| 3rd Quarter - JAN 1 - MAR 31 | =        | 53         | DAYS        |  |  |  |
| 4th Quarter - APR 1 - JUN 30 | =        | 52         | DAYS        |  |  |  |
| <b>TOTAL</b>                 | <b>=</b> | <b>169</b> | <b>DAYS</b> |  |  |  |

## Snow White in the 70's!

So as some of you know, every year the drama class puts on a play that they have been working on since the beginning of the year. You have seen some of their work this year because they also did the Christmas performance. The play is called "Snow White in the 70's" and we would be so honored if all of you came to watch this funny, exciting, disco-dancing play with us! You will watch as these talented middle school students change completely to be their character and amaze you with their acting skills.

Snow White arrives with her distant great-great uncle who has just married a gorgeous, money-grubbing, young, widowed woman and all she seems to want is the money. And we can't forget about our crazy dwarves! They will have you laughing so hard that your stomach will hurt. Snow White falls in love and makes some new friends that will last a lifetime, so please come and remember this night with all of us! :)

There is a **\$3 admission** that will go to fund our drama class next year for more interesting plays to be seen.

Thank you :)



**Thursday, March 13th, 2014**

**1:00pm Dress Rehearsal**

**6:00pm Play starts**

