



ATTENDANCE MATTERS

(submitted by Rebecca Rappold)



The following are KW/Vina's attendance percentages for the 1st Week of School:

PreK-87.7%

Kindergarten-84.8%

1st Grade-80.4%

Overall Campus Attendance-82.9%

Number of Students Dropped from Enrollment- Zero Students at this Time

Staff:

KW Certified - 97%

KW Classified - 97%

Vina Certified- 79%

Vina Classified- 55%

Perfect Attendance for the First Week of School:

We had a great turnout for the first week of school!

PreK-42/53 students had perfect attendance the first week of PreK

Kindergarten-92/140 students had perfect attendance the first week of Kindergarten

1st Grade-99/153 students had perfect attendance the first week of 1st Grade

This year, KW/Vina is working to implement a three tiered framework to support students and families in their efforts to maintain and improve attendance rates. Last week, school leaders, paraprofessionals, and classroom teachers began making personal contacts to families of first grade students not yet in attendance and we had a great response. We were able to draw several students into school that have traditionally waited until after



the Labor Day holiday. We will begin making those same phone calls this week for kindergarten students.



GRADUATION MATTERS

Early Kindergarten

(Submitted by: Ruth Shea, Sheila Grady, Cherie Show)

The Pre-K staff welcomed 51 students on Aug 28 into our Pre-K program. Every year we are amazed by how little they are and how far we take them by the end of the year. We spent the first 3 days of school teaching routines and procedures in the classroom, on the playground and in the lunchroom.

The staff has been working collaboratively on lesson plans and implementing Guided Math routines and concepts. Our school year is off to a great start!



Early Kindergarten

(Submitted by: Brandy Bremner)



PreK Subtest Analysis

	2017 EOY	2018 EOY	2019 EOY
Counting to 30			
T1	31%	25%	41%
T2	60%	71%	57%
T3	9%	4%	2%
Subitizing			
T1	79%	85%	63%
T2			33%
T3	21%	15%	4%
Counting Objects to 15			
T1	94%	95%	96%
T2	2%	2%	2%
T3	4%	2%	2%
Numerical Recognition to 10			
T1	45%	52%	61%
T2	46%	36%	25%
T3	9%	14%	14%

PreK Overall Math Tier Breakdown

		16/17			17/18			18/19		
		Fall	Movement	Spring	Fall	Movement	Spring	Fall	Movement	Spring
Tier 1	Students	0	20+	20	0	18+	18	0	29+	29
	Percentage	0%		43%	0%		35%	0%		57%
Tier 2	Students	26	1+	27	40	7-	33	36	14-	22
	Percentage	49%		57%	75%		63%	67%		43%
Tier 3	Students	27	27-	0	13	12-	1	18	16-	0
	Percentage	51%		0%	25%		2%	33%		0%

Kindergarten

(Submitted by: Kelley Sharp)

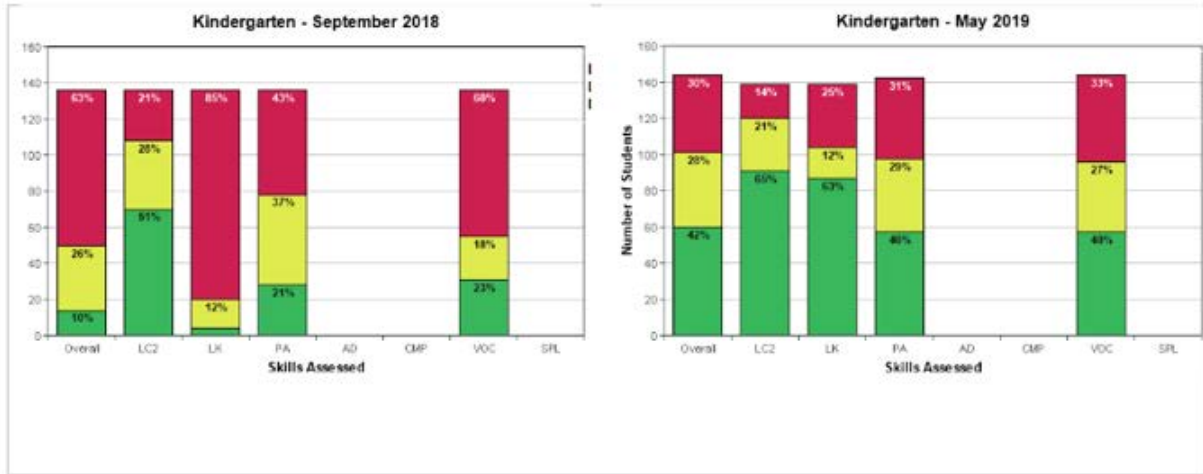
In Kindergarten this past week the teachers went to Vina and helped with their last years students. Teachers said this was a good experience for students and staff. It helped 1st grade with their transition and the students were happy to see there teacher from last year. This week we also had Conscious Discipline training, this was great to have at the beginning of the new school year. Kindergarten teachers practiced breathing techniques with our students in our classrooms. In ELA Wonder, we did the first week of start smart. We talked about getting along together and the most important for classroom management we started with rules and expectations. We used our BEAR rules and matriz to guide us. In Math we are using the Guided Math tool to start the year off. In writing we talked about a Daily Message and this week we are practicing our I Can _____? statements in writing. We are so glad to get off to a great start the Kindergarten staff worked hard at modeling transitioning, cafeteria rules and bus safety for students.

Kindergarten Math/ELA

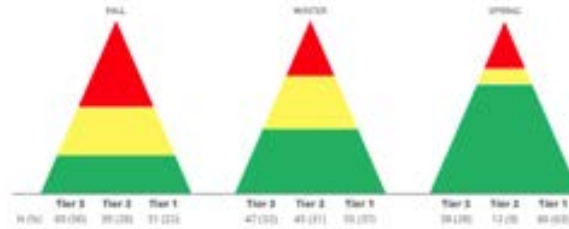
(Submitted by: Brandy Bremner)



Kindergarten Overall



2018-2019 Kindergarten Math Data



In this graphic, the **green** represents students who are performing at or above grade level (Tier 1), the **yellow** represents students who are nearing proficient (Tier 2), and the **red** represents students who are in need of intensive support (Tier 3). As you can see, from Fall to Spring, last year's kindergarten students and teachers worked very hard to increase the number of Tier 1 students from 31 in the fall to 86 in the spring.

<p><u>Areas of Strength:</u></p> <p>Recognizing an amount without counting</p>	<p><u>Opportunities for Improvement:</u></p> <p>Recognizing and naming <u>teen</u> numbers</p>
--	--

First Grade

(Submitted by: Egan Black)

What an awesome start to a new school year! All the wonderful first grade students found their new classroom safely. Teachers are going over routines and procedures. ISIP



Assessment will be September 9 to the 13th. First grade is also planning a field trip to Two Medicine for September.

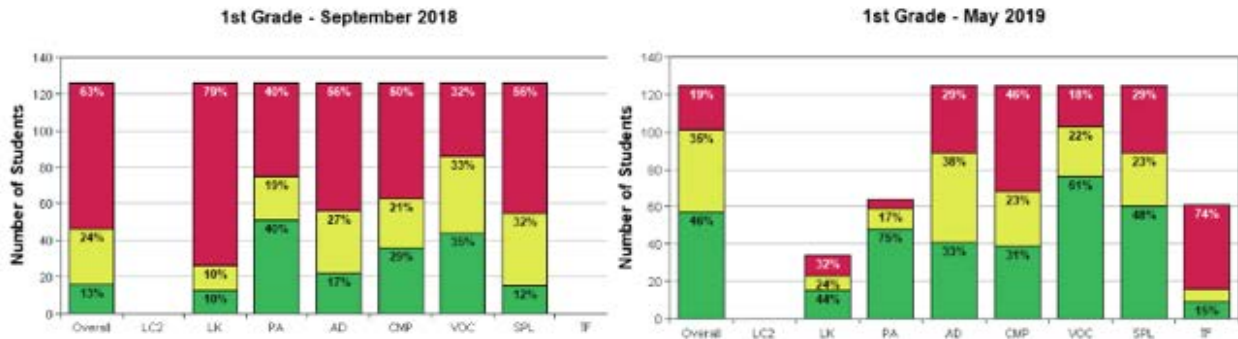
First Grade Math/ELA

(Submitted by: Nicole Whitney)

What an exciting start to the school year! This year, our teachers will be implementing a more refined Guided Math Framework using Raegan Tunstall's Guided Math Resource for instruction. As teachers are modeling and monitoring routines and procedures during the framework, our students are busily engaged in Number Sense activities to strengthen their skills for the upcoming year. Similarly in language arts, our teachers are engaging students right away with a 3 week review of letter knowledge and high frequency words from Kindergarten. To support our students needing more opportunity for review we are trying out a "Hot List" system using paraprofessionals to give quick one-on-one review of letter knowledge and number recognition to students in need. Starting September 17th, our interventionist will begin working with students in the greatest need of extra letter knowledge instruction, and will also take a group in the greatest need of extra number recognition and subitizing instruction. These students have been identified using their end-of-year kindergarten data and their attendance.

We are excited to get the ball rolling in first grade!

1st Grade ISIP- Overall





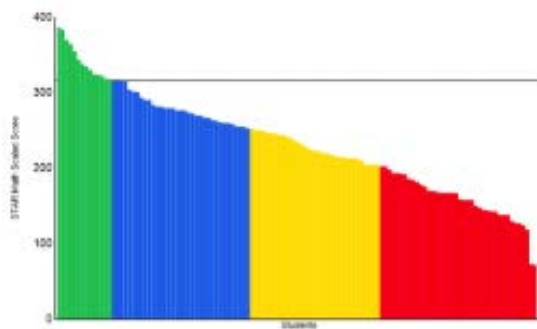
2018-2019 First Grade Math Data

Report Options
Reporting Parameter Group: All Demographics (Default)

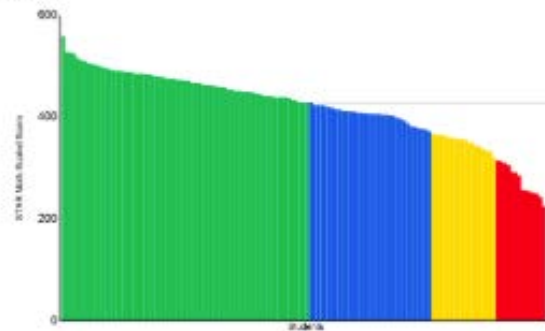
17/18

10/18/19

Grade: 1



Grade: 1



Categories / Levels	Benchmark		Students	
	Scaled Score	Percentile Rank	Number	Percent
At/Above Benchmark	At/Above 317 SS	At/Above 70 PR	14	11%
Category Total			14	11%
Below Benchmark				
On Watch	Below 317 SS	Below 70 PR	36	28%
Intervention	Below 253 SS	Below 40 PR	33	27%
Urgent Intervention	Below 204 SS	Below 25 PR	40	30%
Category Total			108	88%
Students Tested			122	

Categories / Levels	Benchmark		Students	
	Scaled Score	Percentile Rank	Number	Percent
At/Above Benchmark	At/Above 429 SS	At/Above 70 PR	69	51%
Category Total			69	51%
Below Benchmark				
On Watch	Below 429 SS	Below 70 PR	34	25%
Intervention	Below 384 SS	Below 40 PR	18	13%
Urgent Intervention	Below 321 SS	Below 25 PR	14	10%
Category Total			66	48%
Students Tested			135	

In these graphics, the **green** represents students performing at or above grade level (Tier 1), the **blue** represents students who are nearing proficient (Tier 2), and the **yellow** and **red** represent students who are in need of intensive support (Tier 3). As you can see, the first graders and first grade teachers worked very hard to increase the number of Tier 1 students from 14 in the fall to 69 in the spring.

Areas of Strength:

- Telling time to the hour and half hour
- Use addition and subtraction to solve word problems
- Comparing two-digit numbers
- Adding within 100
- Counting to 120

Opportunities for Growth:

- Measuring with iterating units
- Defining attributes vs. non-defining attributes
- Composite shapes
- Partitioning into halves and quarters
- Organize, represent, interpret data (how many more, etc.)

SAFETY MATTERS

Home visits conducted in August- 0

Behavior Referrals in August-0

OSS-0



ISS-0

Incidences of Bullying Reported-0

Solutions/Parent Meetings-1 Student Solutions Meeting Held

Parent/Guardian Positive Contacts-13 Positive Parent Contacts by School Leaders

KW/Vina Elementary had a great start to a new school year in regard to student safety and behavior. Our campus is safe, clean, and beautiful for students, thanks to the extra work from the Maintenance Department and Custodial Engineers over the summer.

We began the year with full MBI tiered supports in place for students PreK-1st. Our school climate is positive, students responded well to reteaching of the expectations from last year, and our staff is confident that we can support students and families throughout the year.

Positives:

We had a great first week at KW/Vina Elementary. Our first grade students began on Monday, Kindergarten on Tuesday, and PreK on Wednesday. This transition into the year for our students, parents, and teachers was helpful. Our kindergarten teachers were able to see their students from last year, now in first grade and help support a successful transition into a new year!

Challenges:

A current challenge for our KW/Vina campus is the cafeteria. We are diligently working to serve approximately 250 students, PreK-1st between the lunch hours of 11:00 and 12:40. Although, we have honed our processes serving this many young students in a small space is a challenge. We are grateful for Lynne's assistance in our KW cafeteria this past week and look forward to having a new cook at Vina so that we are able to serve our first grade students in their own building.





MBI/MTSS School Recognition

2018-2019
GOLD LEVEL

KW Bergan/Vina Chattin Elementary School

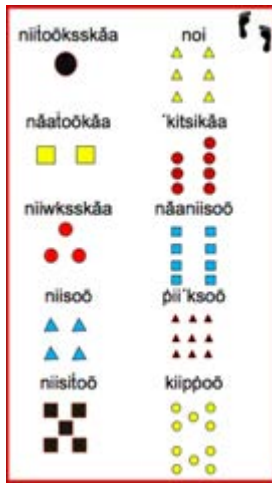
KW/Vina Elementary School is located in Browning, Montana. We are an elementary school with an enrollment of 344 students. We would like to showcase our entire team for their unique roles in sustaining Tier I and implementing Tier II supports for students/staff. Our team works daily to support our students beginning with daily Meet & Greet to the end of the day, as we transition students to bus lines and parent pick-up.







CULTURE MATTERS



School Counselor

(submitted by: Tammy Hall-Reagan)

In the counseling program, we have been busy helping students settle into their classrooms. We are focusing on building connections and getting to know the students.

We have been busy teaching and reinforcing the school process and protocol to our students. We have made making students feel comfortable and safe a main priority, to aid in their learning. We are working with students experiencing separation anxiety, grief and adjustment therapeutically in counseling sessions.

Family Engagement

(Submitted by: Sydney St.Goddard)

For the 1st week of the school year I have been helping our families and students with the transition in the morning. We had a few who were anxious/scared/lonesome so we're supporting them through their emotions they feel is important, and also makes them feel safe. I am also putting our KW clothing closet together and going to stock a clothing closet for our students at Vina. I would like to thank the FIT program (Nikki Hannon) for helping to keep our clothing needs stocked.



YOU'RE ALWAYS WELCOME TO VISIT OUR EDUCATIONAL LODGE AT KW/VINA ELEMENTARY

