

Conceptual Engineer's Opinion of Probable Costs



William Hatch Elementary School

Oak Park, IL
September 15, 2014

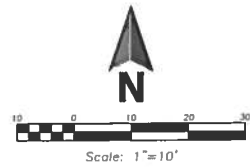
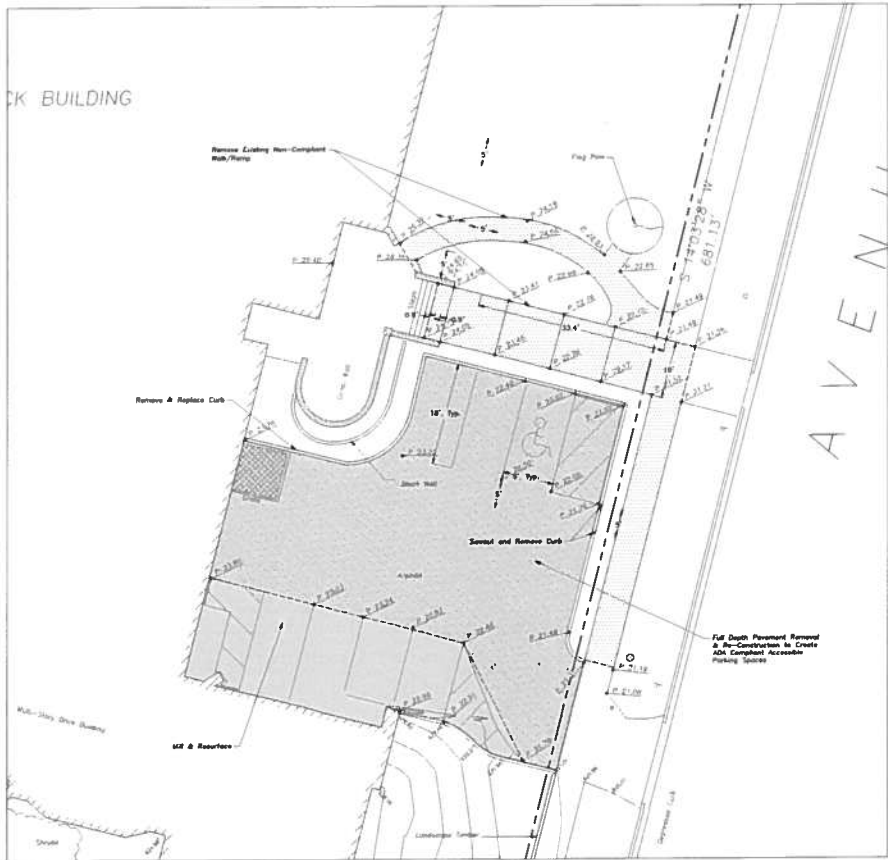
Division A - Site Demolition					
Item	Description	Unit	Quantity	Unit Price	Extended Price
	Remove Existing Vegetation & Landscaping	LS	1	\$750.00	\$750.00
	Saw Cut (Full Depth)	LF	130	\$4.50	\$585.00
	Bit. Pavement Removal (Bit. Layer Only)	SY	115	\$15.00	\$1,725.00
	Bit. Pavement Removal (Full Depth)	SY	300	\$25.00	\$7,500.00
	Re-Grade Existing Subgrade	SY	300	\$15.00	\$4,500.00
	Remove Handrail & Dispose	LF	40	\$10.00	\$400.00
	Concrete Curb Removal	LF	45	\$10.00	\$450.00
	Concrete Sidewalk Removal	SY	100	\$20.00	\$2,000.00
	Remove Existing Signage	Ea.	1	\$200.00	\$200.00
	Off Site Disposal	LS	1	\$2,000.00	\$2,000.00
	Subtotal				\$20,110.00

Division B - Site Pavement Improvements					
Item	Description	Unit	Quantity	Unit Price	Extended Price
	Bituminous Surface Course Only	SY	115	\$20.00	\$2,300.00
	Full Depth Pavement Section	SY	300	\$50.00	\$15,000.00
	Pavement Striping	LS	1	\$2,000.00	\$2,000.00
	Concrete Curb	LF	45	\$20.00	\$900.00
	Concrete Sidewalk	SY	110	\$65.00	\$7,150.00
	Concrete Steps	LS	1	\$1,000.00	\$1,000.00
	Retaining Wall (Pour in Place)	LF	21	\$175.00	\$3,675.00
	Handrail Free Standing	LF	115	\$175.00	\$20,125.00
	Subtotal				\$52,150.00

Division C - Misc.					
Item	Description	Unit	Quantity	Unit Price	Extended Price
	Accessible Parking Space Sign And Installation	Ea.	2	\$750.00	\$1,500.00
	Seeding & Landscape Restoration	LS	1	\$5,000.00	\$5,000.00
	Erosion Control Measures	LS	1	\$1,200.00	\$1,200.00
	Subtotal				\$7,700.00

	Total Costs from Above				\$79,960.00
	10% General Conditions				\$7,996.00
	15% Contingency				\$11,994.00
	Subtotal				\$99,950.00
	12% A/E Fees				\$11,994.00
	Opinion of Total Construction Costs				\$111,944.00

Note: This opinion of probable construction costs is based on quantities and unit prices assumed by the engineer based on data from previous construction projects, and will not necessarily reflect actual bid prices.



LEGEND

DISTING	NOTED	PROPOSED
⊙	Manhole	
⊖	Clean Basin	
△	Area Drain	
⊕	Clean Out	
⊗	Fire Hydrant	
—	Tie	
—	Fence	
⊙	Asbestos	
⊖	Paving Mat	
—	Curb & Curb	
—	Depressed Curb	
—	Curb Extension	
—	Curb Elevation	
—	Pavement Elevation	
—	Slab-on Elevation	
—	Ground Elevation	
—	Top of Retaining Wall Elevation	
—	Outdoor Line	
—	Discontin. Tree	
—	Confusion Tree	
—	Boundary	
—	Fire Protection	
—	Fencing at Dry Line	

DEMOLITION LEGEND

[Hatched Box]	Structural Pavement Removal (Full Depth)
[Solid Grey Box]	Structural Pavement Removal (AS & Resurface)
[Light Grey Box]	Concrete Pavement Removal (Full Depth)
[Dashed Line]	Pavement Seccut
[Double Line]	Curb & Gutter Removal



**ERIKSSON
ENGINEERING
ASSOCIATES, LTD.**

148 SOMMERSE DRIVE, SUITE A
GRAYSLAKE, ILLINOIS 60520
Phone: (647) 833-8804
Fax: (647) 833-8864
Email: INFO@EKA-LTD.COM
Professional Engineer
License No. 184-C-023180
Business: 04/20/2013

**WILLIAM HATCH
ELEMENTARY SCHOOL
ORLAND PARK SCHOOL DISTRICT 97
1000 N. Ridgeland Ave,
Oak Park, Illinois**

Reserved for Best:		
Expiration Date: _____		
No.	Date	Description

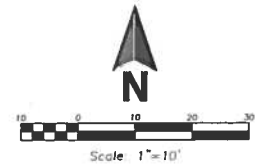
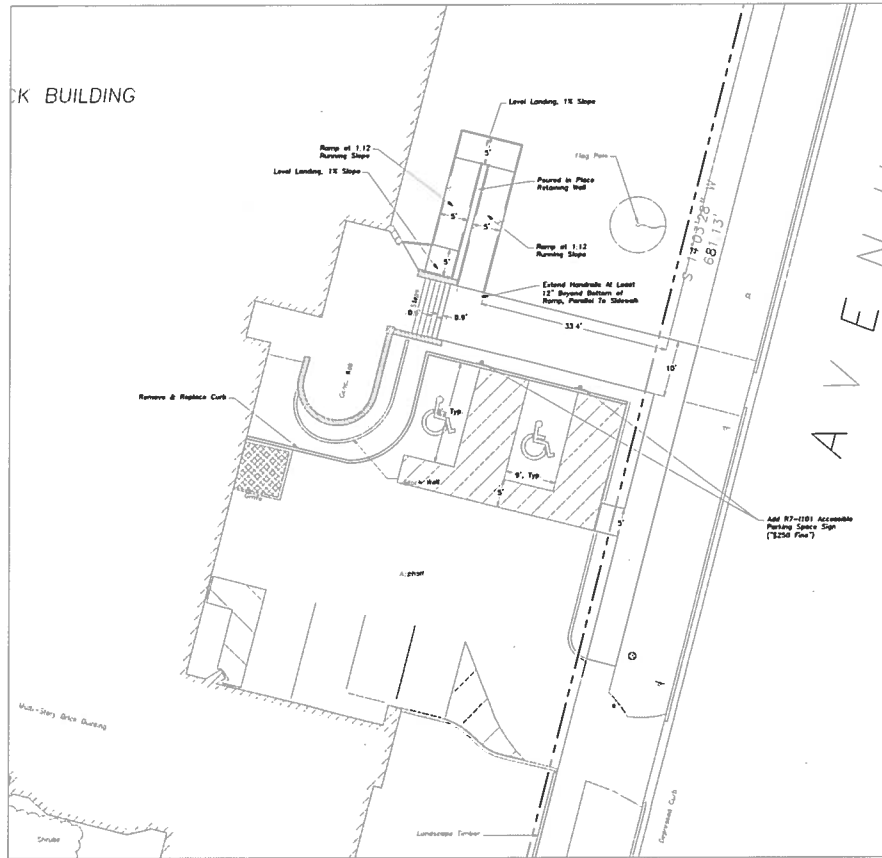
Prepared By: _____ Date: 09/15/14
 Project No: _____

Sheet Title:
**CONCEPTUAL
DEMOLITION
PLAN**

Sheet No:
C-1

NOT FOR CONSTRUCTION

EEA - P:\Users\John_Park_Schroeder\Documents\Drawings\Siteplan_official\Hatch_Clean_2014-09-11.dwg
 PClaris: 9/22/14 @ 11:26am By: clarpas



LEGEND

EXISTING	SYMBOL	PROPOSED	SYMBOL
○	Manhole	○	Manhole
⊙	Catch Basin	⊙	Accessible Parking Spot
⊖	Aval Drain	⊖	Curb & Curb
⊕	Clear Out	⊖	Depressed Curb
⊕	Fire Hydrant	⊖	Dark Dimension
⊕	Spot	⊖	Color Dimension
⊕	Face	⊖	Personnel Dimension
⊕	Accessible Parking Spot	⊖	Stairwell Dimension
⊖	Curb & Curb	⊖	Ground Dimension
⊖	Depressed Curb	⊖	Top of Retaining Wall Dimension
⊖	Dark Dimension	⊖	Center Line
⊖	Color Dimension	⊖	Dimension Free
⊖	Personnel Dimension	⊖	Coordinate Free
⊖	Stairwell Dimension	⊖	Dropbar
⊖	Ground Dimension	⊖	Free Protected
⊖	Top of Retaining Wall Dimension	⊖	Finery at DW Line
⊖	Center Line	⊖	
⊖	Dimension Free		
⊖	Coordinate Free		
⊖	Dropbar		
⊖	Free Protected		
⊖	Finery at DW Line		



**ERIKSSON
ENGINEERING
ASSOCIATES, LTD.**
 146 COMMERCIAL DRIVE, SUITE A
 GRAYLACE, ILLINOIS 60422
 Phone (847) 833-8804
 Fax (847) 833-8804
 Email: INFO@EEA-LTD.COM
 P:\Users\John_Park_Schroeder\Documents\Drawings\Siteplan_official\Hatch_Clean_2014-09-11.dwg
 Project: 9/22/14 @ 11:26am By: clarpas

**WILLIAM HATCH
ELEMENTARY SCHOOL
ORLAND PARK SCHOOL DISTRICT 97
1000 N. Ridgeland Ave,
Oak Park, Illinois**

Reserved for Best:

Expiration Date:

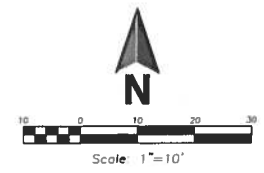
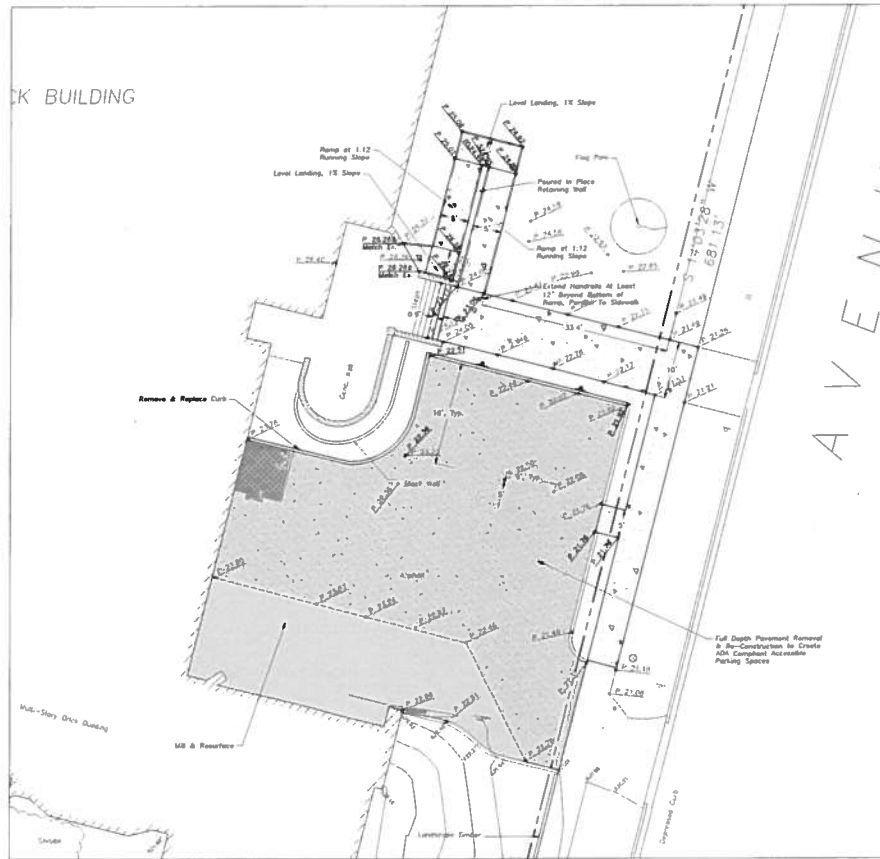
No.	Date	Description

Sheet Title:
**CONCEPTUAL
GEOMETRY
PLAN**

Sheet No:
C-2

NOT FOR CONSTRUCTION

E:\A - P\Work\Oak Park Schools\Access\A\Drawings\Stephan_Addam Hatch_Clean_2014-09-11.dwg
 Plotted: 9/22/14 @ 12:56m By: stephan



LEGEND

DISTING	NOTED	PROPOSED
○	Manhole	
⊙	Curb Box	
△	Ave Sign	
□	Clear Det	
○	Fire Hydrant	
○	Sign	
○	Fence	
○	Accessibility Parking Spot	○
○	Curb & Curb	○
○	Depressed Curb	○
C 78.30	Curb Elevation	E 78.20
+ 78.00	Center Elevation	F 78.00
+ 78.11	Pavement Elevation	P 78.11
+ 78.15	Subsoil Elevation	S 78.15
+ 78.0	Ground Elevation	G 78.0
+ 1.00 78.20	Top of Retaining Wall Elevation	R 1.00 78.20
781	Contour Line	781
○	Drainage Tree	○
○	Condition Tree	○
○	Boundary	○
○	See Provisions Forming at Site	○

PAVING LEGEND

- Asphalt Pavement Removal (1 1/2" Depth)
- Asphalt Pavement Removal (MS & Resurface)
- Concrete Slabwork Section
 - 3" Portland Cement Concrete
 - 5" x 5" x 1/4" x 1/4" Welded Wire Fabric
 - 2" Aggregate Base Course, Type B, Crushed

**ERIKSSON
ENGINEERING
ASSOCIATES, LTD.**

148 DENNERSE DRIVE, SUITE A
 BRYANTREE, ILLINOIS 60018
 TEL: (630) 553-4884
 FAX: (630) 553-4884
 INFO@EAKA-LLC.COM
 PROFESSIONAL ENGINEERING
 LICENSE NO. 194-003880
 EXPIRES: 04/30/2018

**WILLIAM HATCH
ELEMENTARY SCHOOL
ORLAND PARK SCHOOL DISTRICT 97
1000 N. Ridgeland Ave.,
Oak Park, Illinois**

Revised for Sheet:

Expiration Date:

No.	Date	Description

Sheet No:	05/15/14
Approval No:	Public

**CONCEPTUAL
GRADING AND
PAVING PLAN**

Sheet No: **C-3**

NOT FOR CONSTRUCTION

Conceptual Engineer's Opinion of Probable Costs



Lincoln Elementary School

Oak Park, IL
September 15, 2014

Division A - Site Demolition					
Item	Description	Unit	Quantity	Unit Price	Extended Price
	Saw Cut (Full Depth)	LF	35	\$4.50	\$157.50
	Concrete Sidewalk Removal	SY	30	\$20.00	\$600.00
	Remove Existing Ramp Walls / Footings / Handrail	LF	38	\$100.00	\$3,800.00
	Off Site Disposal	LS	1	\$500.00	\$500.00
	Subtotal				\$5,057.50

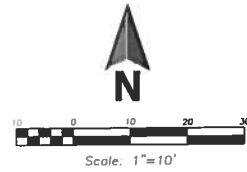
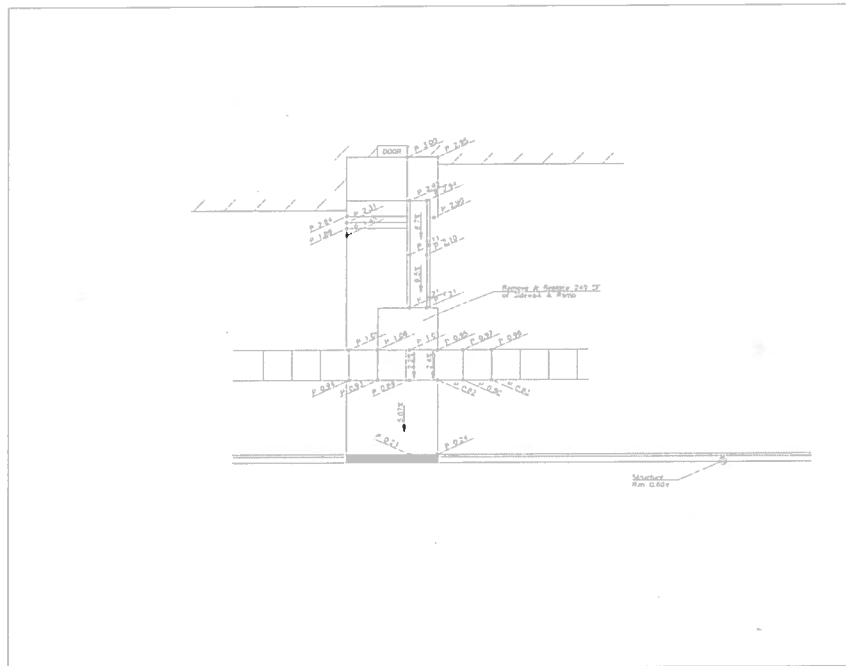
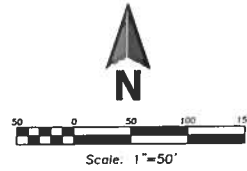
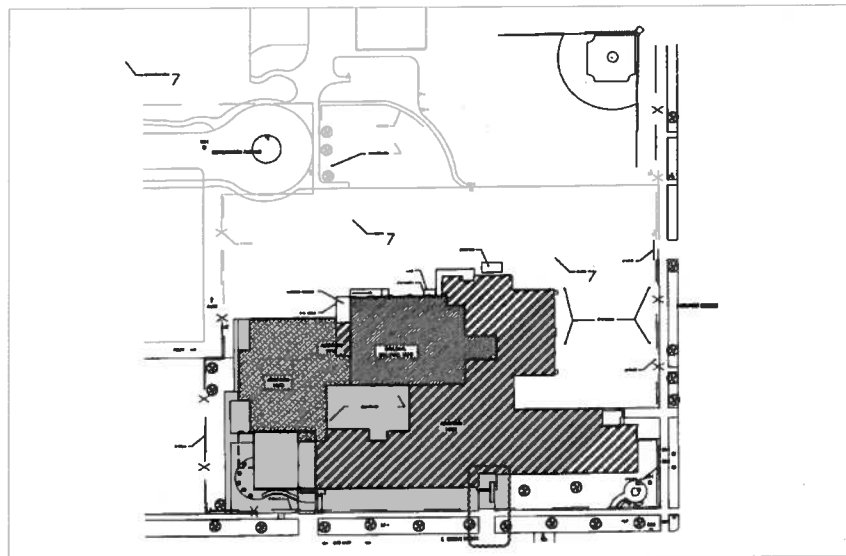
Division B - Site Pavement Improvements					
Item	Description	Unit	Quantity	Unit Price	Extended Price
	Concrete Sidewalk	SY	30	\$65.00	\$1,950.00
	Ramp Retaining Wall (Pour in Place)	LF	48	\$175.00	\$8,400.00
	Handrail	LF	50	\$175.00	\$8,750.00
	Subtotal				\$19,100.00

Division C - Misc.					
Item	Description	Unit	Quantity	Unit Price	Extended Price
	Seeding & Landscape Restoration	LS	1	\$750.00	\$750.00
	Erosion Control Measures	LS	1	\$500.00	\$500.00
	Subtotal				\$1,250.00

	Total Costs from Above				\$25,407.50
	10% General Conditions				\$2,541.00
	15% Contingency				\$3,811.00
	Subtotal				\$31,759.50
	12% A/E Fees				\$3,811.14
	Opinion of Total Construction Costs				\$35,571.00

Note: This opinion of probable construction costs is based on quantities and unit prices assumed by the engineer based on data from previous construction projects, and will not necessarily reflect actual bid prices.

E:\A...p\Open\On...Rev...Schools\Accessibility\Drawings\On...Rev...Schools\Accessibility_2014-09-03.dwg
 Priced: 9/22/14 @ 11:34am By: chappner



**ERIKSSON
ENGINEERING
ASSOCIATES, LTD.**

148 COMMERCE DRIVE, SUITE A
 BRYAN, ILLINOIS 62502
 TEL: (618) 233-8884
 FAX: (618) 233-8884
 EMAIL: INFO@EEA-LTD.COM
 PROFESSIONAL DESIGN FIRM
 LICENSE NO. 184-000000
 EXPIRES 04-30-2018

**LINCOLN ELEMENTARY SCHOOL
 ORLAND PARK SCHOOL DISTRICT 97
 1111 S. Grove Ave,
 Oak Park, Illinois**

Reserved for Sheet:

Expiration Date:

No.	Date	Description

<small>© Eriksson Engineering Associates, Ltd. 2014</small> <small>ALL RIGHTS RESERVED. NO PART OF THIS DOCUMENT MAY BE REPRODUCED OR TRANSMITTED IN ANY FORM OR BY ANY MEANS, ELECTRONIC OR MECHANICAL, WITHOUT PERMISSION IN WRITING FROM ERIKSSON ENGINEERING ASSOCIATES, LTD.</small>	
Sheet No:	05/28/14
Approved By:	Project No:

Sheet Title:
**CONCEPT
 SKETCH**

Sheet No:
EX-3

NOT FOR CONSTRUCTION

Preliminary Engineer's Opinion of Probable Costs



Whittier Elementary School

Oak Park, IL
September 15, 2014

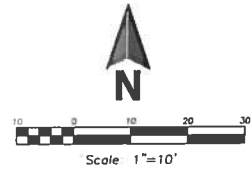
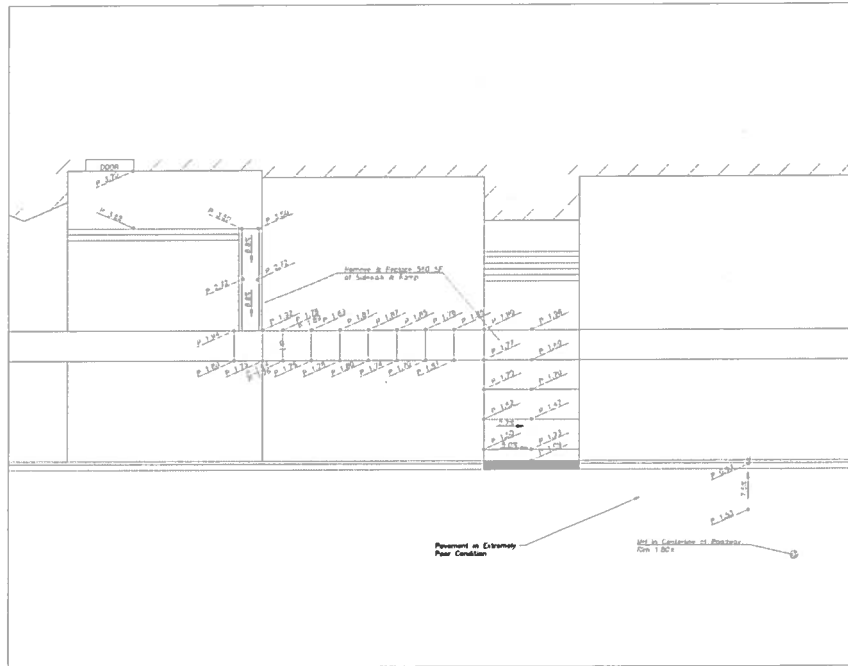
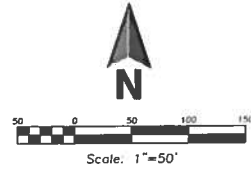
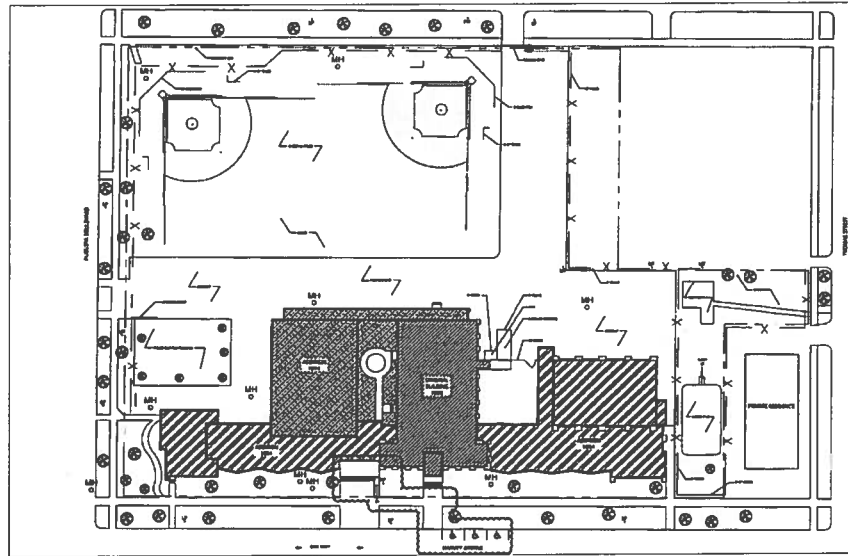
Division A - Site Demolition					
Item	Description	Unit	Quantity	Unit Price	Extended Price
	Saw Cut (Full Depth)	LF	35	\$4.50	\$157.50
	Concrete Sidewalk Removal	SY	65	\$20.00	\$1,300.00
	Off Site Disposal	LS	1	\$500.00	\$500.00
Subtotal					\$1,957.50

Division B - Site Pavement Improvements					
Item	Description	Unit	Quantity	Unit Price	Extended Price
	Concrete Sidewalk	SY	65	\$65.00	\$4,225.00
	ADA Tactile Warning Surface	LS	2	\$250.00	\$500.00
Subtotal					\$4,725.00

Division C - Misc.					
Item	Description	Unit	Quantity	Unit Price	Extended Price
	Seeding & Landscape Restoration	LS	1	\$750.00	\$750.00
	Erosion Control Measures	LS	1	\$500.00	\$500.00
Subtotal					\$1,250.00

Total Costs from Above	\$7,932.50
10% General Conditions	\$793.00
25% Contingency	\$1,983.00
Subtotal	\$10,708.50
12% A/E Fees	\$1,285.02
Opinion of Total Construction Costs	\$11,994.00

Note: This opinion of probable construction costs is based on quantities and unit prices assumed by the engineer based on data from previous construction projects, and will not necessarily reflect actual bid prices.



**ERIKSSON
ENGINEERING
ASSOCIATES, LTD.**

148 SOMMERSE DRIVE, SUITE A
 GRAYLACE, ILLINOIS 60030
 TEL: (847) 552-4504
 FAX: (847) 552-0854
 EMAIL: INFO@EEA-LTD.COM
 PROFESSIONAL DESIGN FIRM
 LICENSE NO. 184-003380
 EXP. DATE 04/30/2015

**WHITTIER ELEMENTARY SCHOOL
 ORLAND PARK SCHOOL DISTRICT 97
 715 N. HARVEY AVE,
 OAK PARK, ILLINOIS**

Reserved for Client

Expiration Date:

No.	Date	Description

© Eriksson Engineering Associates, Ltd. 2014
 ALL RIGHTS RESERVED. THIS DOCUMENT IS THE PROPERTY OF ERIKSSON ENGINEERING ASSOCIATES, LTD. AND IS TO BE USED ONLY FOR THE PROJECT AND SITE SPECIFICALLY IDENTIFIED HEREON.
 Project No: 140110
 Date: 09/28/14
 Sheet No:

**CONCEPT
 SKETCH**

Sheet No: **EX-2**

NOT FOR CONSTRUCTION

Preliminary Engineer's Opinion of Probable Costs



Longfellow Elementary School

Oak Park, IL
September 15, 2014

Division A - Site Demolition					
Item	Description	Unit	Quantity	Unit Price	Extended Price
	Saw Cut (Full Depth)	LF	50	\$4.50	\$225.00
	Concrete Sidewalk Removal	SY	80	\$20.00	\$1,600.00
	Remove Existing Ramp Walls / Footings / Handrail	LF	42	\$100.00	\$4,200.00
	Off Site Disposal	LS	1	\$1,000.00	\$1,000.00
	Subtotal				\$7,025.00

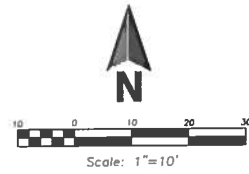
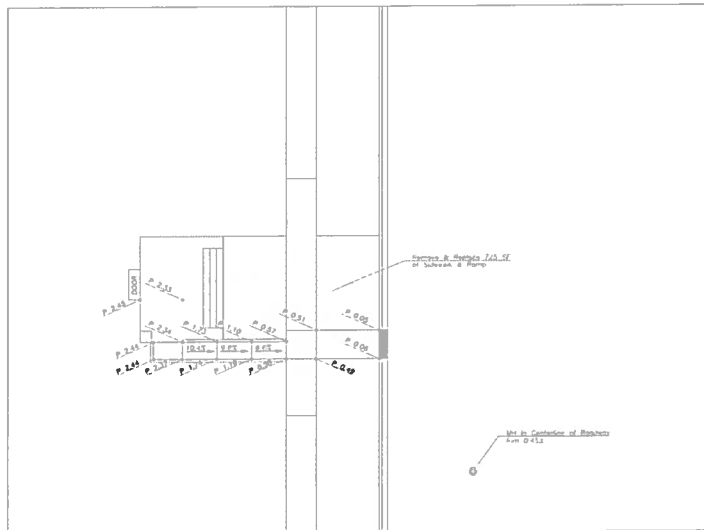
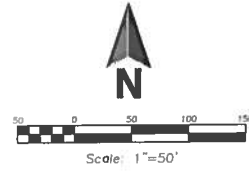
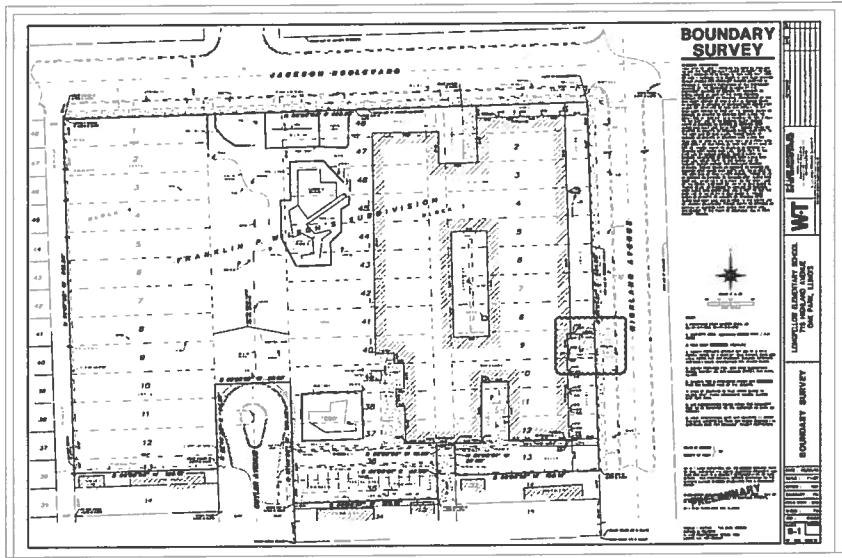
Division B - Site Pavement Improvements					
Item	Description	Unit	Quantity	Unit Price	Extended Price
	Concrete Sidewalk	SY	80	\$65.00	\$5,200.00
	ADA curb cuts at street	Allow	1	\$800.00	\$800.00
	Ramp Retaining Wall (Pour in Place)	LF	42	\$175.00	\$7,350.00
	Handrail - Free Standing	LF	44	\$175.00	\$7,700.00
	ADA Tactile Warning Surface	LS	1	\$250.00	\$250.00
	Subtotal				\$21,300.00

Division C - Misc.					
Item	Description	Unit	Quantity	Unit Price	Extended Price
	Seeding & Landscape Restoration	LS	1	\$750.00	\$750.00
	Erosion Control Measures	LS	1	\$500.00	\$500.00
	Subtotal				\$1,250.00

	Total Costs from Above				\$29,575.00
	10% General Conditions				\$2,958.00
	15% Contingency				\$4,436.00
	Subtotal				\$36,969.00
	12% A/E Fees				\$4,436.28
	Opinion of Total Construction Costs				\$41,405.00

Note: This opinion of probable construction costs is based on quantities and unit prices assumed by the engineer based on data from previous construction projects, and will not necessarily reflect actual bid prices.

SEA - P:\Users\Gm_Park_Schools_Accessibility\Drawings\Oak_Park_Schools_Accessibility_2014-03-03.dwg
 Plotted: 9/22/14 @ 11:35am By: chappin



ERIKSSON ENGINEERING ASSOCIATES, LTD.

148 BONGERIE DRIVE, SUITE A
 GRAYSLAKE, ILLINOIS 60520
 Phone: (847) 533-8800
 Fax: (847) 533-8864
 Email: INFO@EEA-LTD.COM
 Professional Engineer
 License No. 184-003880
 Expires: 04/30/2018

**LONGFELLOW ELEMENTARY SCHOOL
 ORLAND PARK SCHOOL DISTRICT 97
 715 N. Highland Ave,
 Oak Park, Illinois**

Reserved for Best:

Expiration Date:

No.	Date	Description

Prepared By: [Signature] Date: 09/28/14
 Checked By: [Signature] Project No. [Number]

Sheet Title:
CONCEPT SKETCH

Sheet No:
EX-4

NOT FOR CONSTRUCTION