

March 2017

Derby Public Schools

Performance Dashboard

Derby Middle School

William Vitelli, Principal

“People without information cannot act. People with information cannot help but act.”

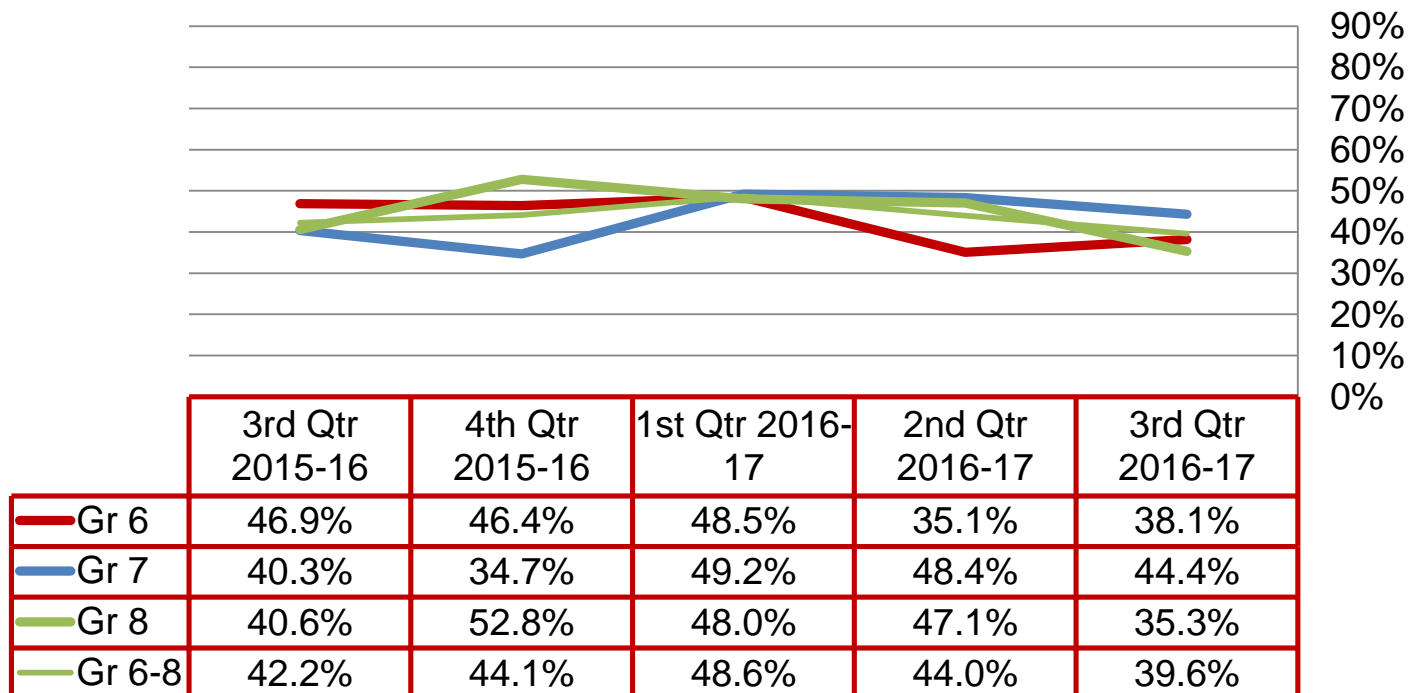
Ken Blanchard



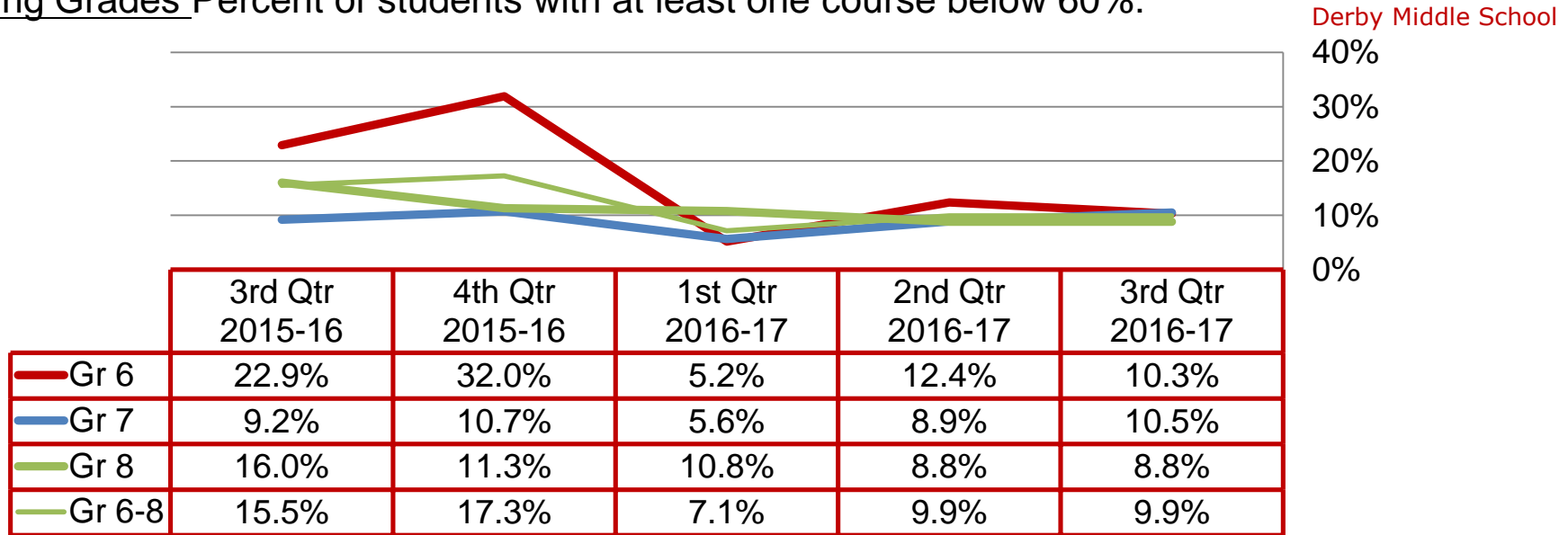
Quarterly Data

High Grades

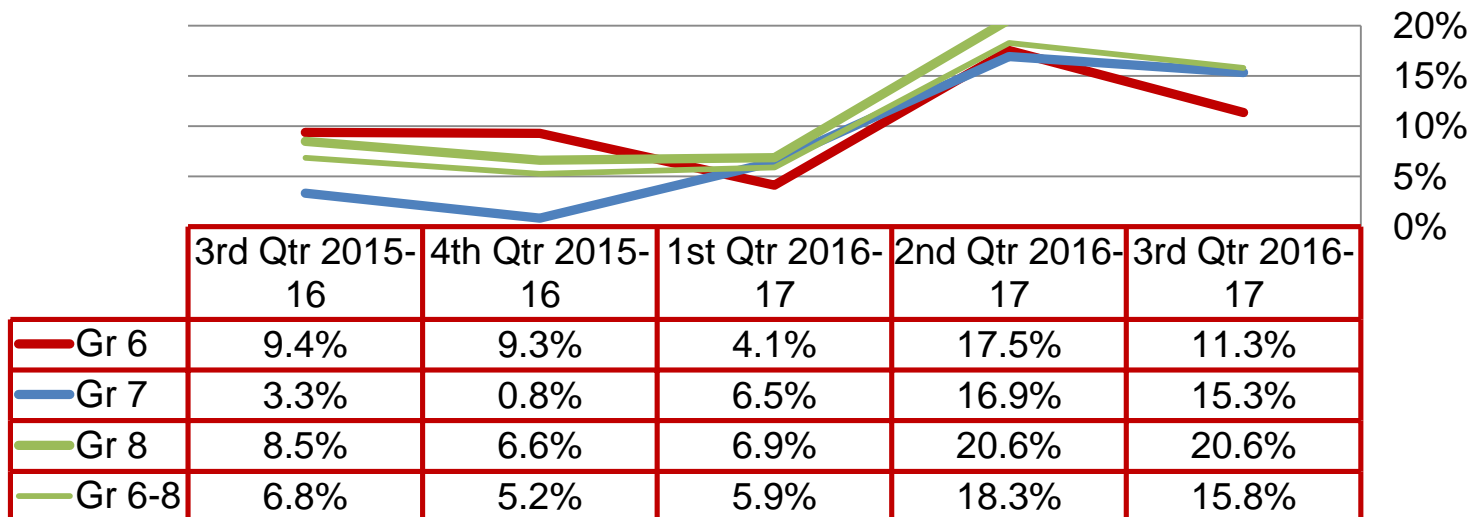
Percent of students earning 80 or above in all courses and no unsatisfactory mark in citizenship:



Failing Grades Percent of students with at least one course below 60%:



Failing Grades Percent of students with at least two courses below 60%:



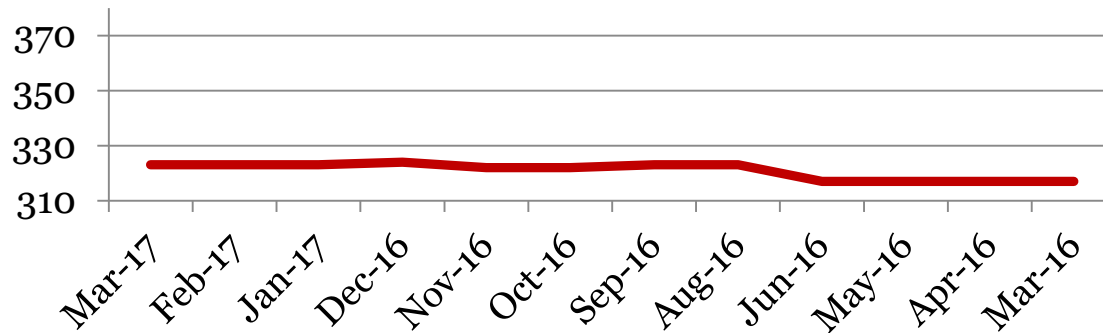
Monthly Data

Derby Middle School

Enrollment – 1st of the month

	6	7	8	Total
Mar-17	97	124	102	323
Feb-17	97	124	102	323
Jan-17	97	124	102	323
Dec-16	97	121	106	324
Nov-16	96	120	106	322
Oct-16	97	119	106	322
Sept-16	97	120	106	323
June-16	113	109	95	317
May-16	113	109	95	317
Apr-16	113	109	95	317
Mar-16	113	109	95	317

Total School Enrollment

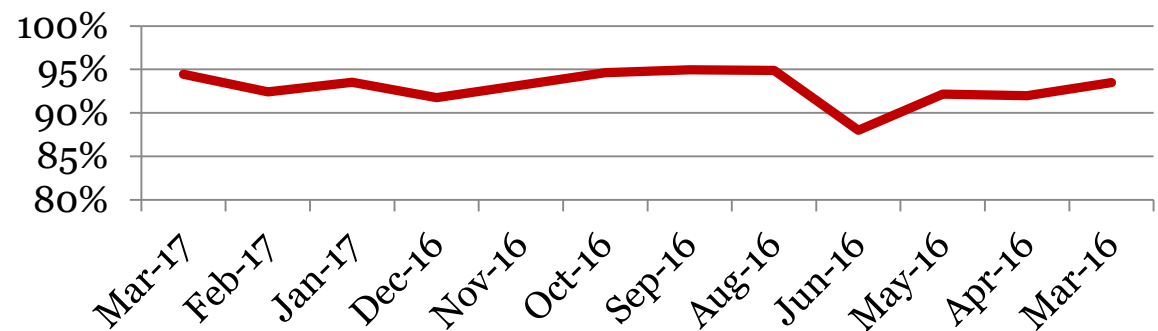


Attendance – Students

Average daily percent present:

	6	7	8	Total
Mar-17	94.5	95.4	93.3	94.5
Feb-17	91.3	92.5	93.4	92.4
Jan-17	94.6	93.6	92.5	93.5
Dec-16	92.4	90.7	92.4	91.8
Nov-16	93.3	93.5	92.7	93.2
Oct-16	96.1	94.1	93.8	94.6
Sep-16	96.5	95.9	92.7	95.0
Aug-16	90.5	97.7	96.0	94.9
Jun-16	92.0	89.8	81.4	88.0
May-16	95.2	91.4	89.5	92.2
Apr-16	94.0	92.3	89.2	92.0
Mar-16	92.6	94.0	94.0	93.5

Total Student Attendance



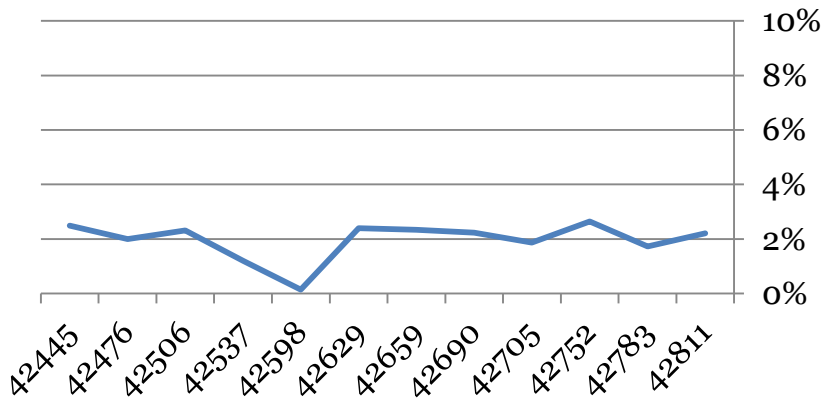
Tardies Average daily percent tardy:

	6	7	8	Total
Mar-17	2	2	3	2
Feb-17	1	2	2	2
Jan-17	3	2	3	3
Dec-16	2	1	3	2
Nov-16	3	2	2	2
Oct-16	2	2	3	2
Sept-16	2	2	3	2
Aug-16	0	0	0	0
June-16	1	1	1	1
May-16	2	2	3	2
Apr-16	2	2	2	2
Mar-16	3	2	3	2

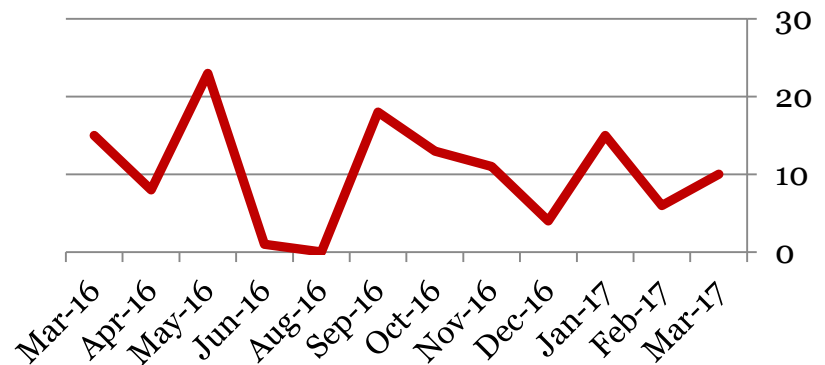
Number of students tardy 5 or more days:

	6	7	8	Total
Mar-17	4	5	1	10
Feb-17	2	2	2	6
Jan-17	5	2	8	15
Dec-16	2	1	1	4
Nov-16	7	4	0	11
Oct-16	4	0	9	13
Sept-16	6	3	9	18
Aug-16	0	0	0	0
June-16	0	0	1	1
May-16	12	1	10	23
Apr-16	6	1	1	8
Mar-16	7	3	5	15

Total Student Tardies



Students over Threshold

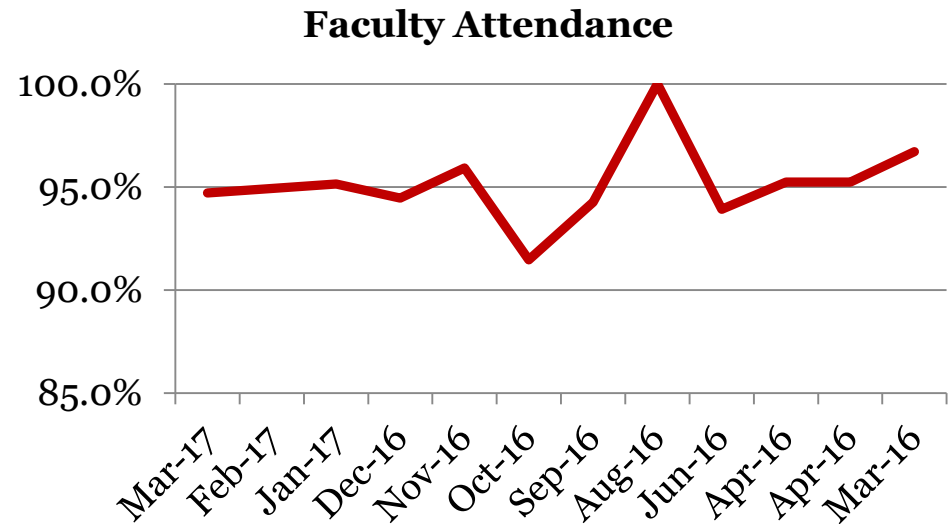


Attendance – Faculty

Average daily percent present:

Derby Middle School

	Total
Mar-17	94.7
Feb-17	94.9
Jan-17	95.1
Dec-16	94.5
Nov-16	96
Oct-16	91
Sept-16	94
June-16	94
May-16	93
Apr-16	95
Mar-16	97



**This indicator reflects certified staff and does not include absences created by class trips, professional development, workman's comp and FMLA. However % may be reduced due to long term illness beyond FMLA.*

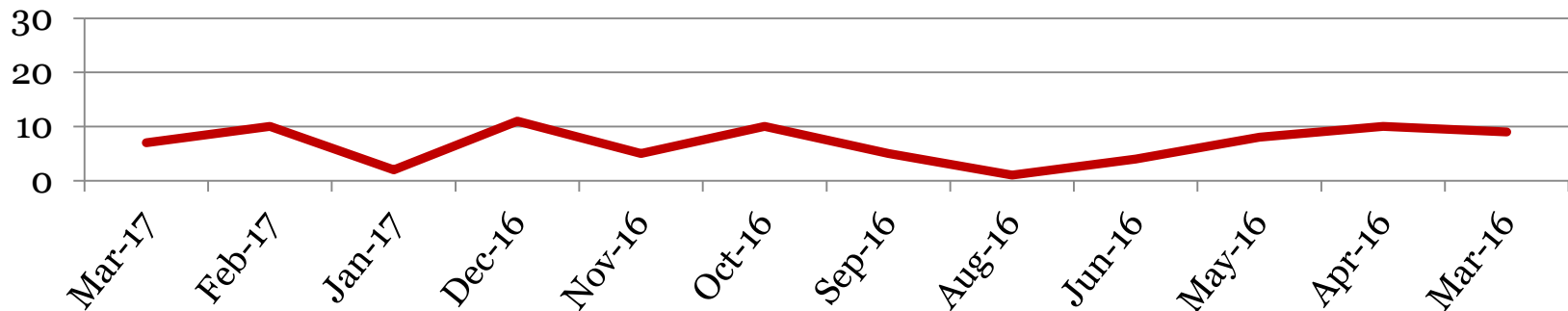
Suspensions – Out of School

Derby Middle School

Number of student suspensions (total days of suspension):

	6		7		8		Total	
Mar-17	4	(12)	2	(2)	1	(10)	7	(24)
Feb-17	3	(12)	3	(11)	4	(11)	10	(34)
Jan-17	2	(13)	0	(0)	0	(0)	0	(13)
Dec-16	4	(20)	3	(18)	4	(15)	11	(53)
Nov-16	4	(18)	0	(0)	1	(5)	5	(23)
Oct-16	5	(19)	3	(8)	2	(3)	10	(30)
Sept-16	1	(1)	2	(3)	2	(4)	5	(8)
Jun-16	1	(5)	2	(4)	1	(6)	4	(15)
May-16	2	(3)	3	(9)	3	(20)	8	(32)
Apr-16	0	(0)	7	(43)	3	(19)	10	(62)
Mar-16	5	(20)	3	(14)	1	(5)	9	(39)

Total Out of School Suspensions



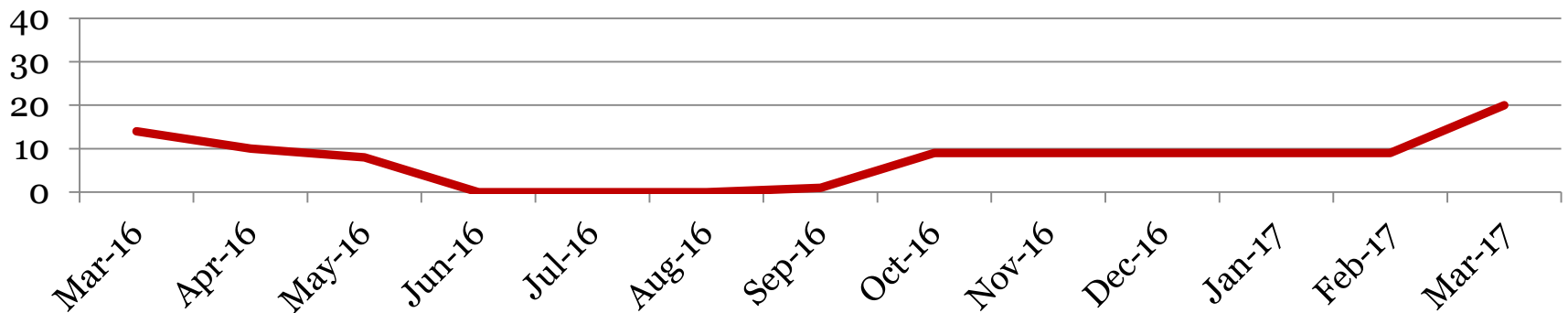
Suspensions – In School

Derby Middle School

Number of student suspensions (total days of suspension):

	6		7		8		Total	
Mar-17	8	(13)	5	(12)	7	(8)	20	(33)
Feb-17	4	(8)	3	(6)	2	(3)	9	(17)
Jan-17	5	(8)	3	(4)	1	(1)	9	(13)
Dec-16	4	(4)	3	(2.5)	2	(2)	9	(8.5)
Nov-16	2	(2)	3	(3)	4	(6)	9	(11)
Oct-16	1	(1)	1	(1)	7	(8.5)	9	(10.5)
Sept-16	0	(0)	0	(0)	1	(1)	1	(1)
June-15	2	(1.5)	1	(1)	0	(0)	3	(1.5)
May-16	2	(3)	3	(6)	5	(8)	8	(14)
Apr-16	8	(11)	0	(0)	4	(5)	12	(16)
Mar-16	5	(8)	2	(3)	7	(8)	14	(19)

Total In School Suspensions



Newly Enrolled Students

	6	7	8	Total
Mar-17	0	1	2	3
Feb-17	0	0	1	1
Jan-17	1	4	2	7
Dec-16	1	1	0	2
Nov-16	0	1	1	2
Oct-16	0	2	0	2
Sept-16	2	2	0	4
Summer-16	1	9	3	13
June-15	0	0	0	0
May-16	0	0	1	1
Apr-16	1	0	1	2
Mar-16	1	1	0	2

Departing Students

Students who have left the school during the month for any reason:

	6	7	8	Total
Mar-17	0	1	1	2
Feb-17	0	0	0	0
Jan-17	0	1	3	4
Dec-16	0	0	0	0
Nov-16	0	0	1	1
Oct-16	1	1	0	2
Sept-16	5	0	3	8
Summer-16	10	5	16	31
June-16	0	0	0	0
May-16	1	0	0	1
Apr-16	0	0	0	0
Mar-16	0	1	0	1