



DATE: 04/13/2026

TITLE: Information Services

TYPE: Information

PRESENTER(S): Corey Haugen, Director of Information Services

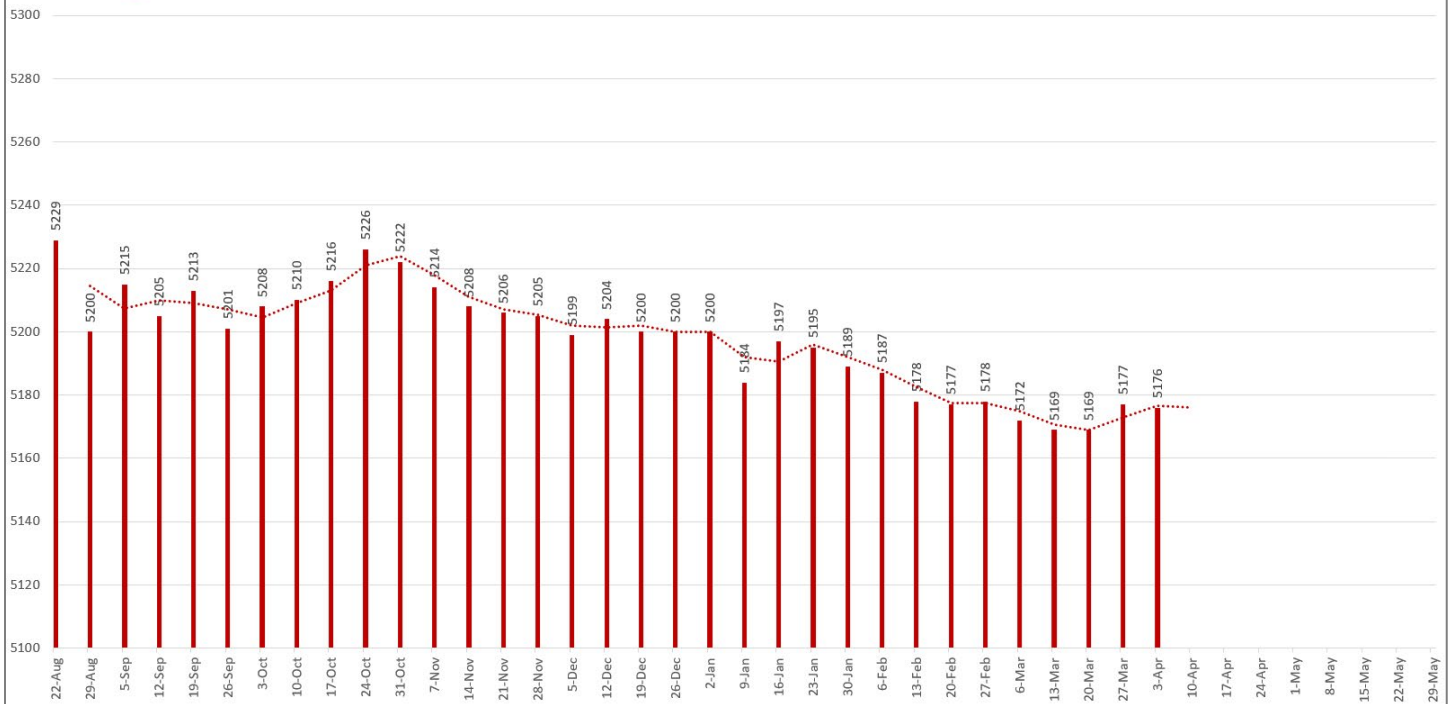
BACKGROUND:

The mission of the Information Services department is to support the district mission and strategic priorities by building capacity through research, evaluation and the application of data to inform school improvement for student success. We provide support and expertise to schools and staff through:

- Providing expertise in the area of measurement and delivering accurate and timely information to building and district staff
- Providing support to district and schools through a systematic evaluation process of district programs
- Reviewing and summarizing data related to student learning and instruction
- Providing professional development on assessment practices, data analysis and interpretation

Support and resources to ensure a safe and welcoming learning environment

- As of April 06, 2026, we have 187 new kindergartners (335 projected) enrolled for 26-27 which is 4 students short for the same time period last year. Additionally, Information Services is working to provide the 4 elementary schools lists of potential kindergarten students. Elementary administrative assistants will call potential KG families and complete the following checklist:
 - Confirm address and planned enrollment for KG in 25-26.
 - Provide information on how to register online (<https://www.austin.k12.mn.us/district-offices/enrollment-office>) and if they need assistance to share the enrollment phone line at 507-460-1937
 - Immunization reminders
 - PreSchool Screening check – if they haven't done that to contact the CLC for a screening date.
 - Answer any questions about their school and kindergarten and make the family feel welcomed to their new school.
- **Enrollment continues to trend lower** for 2nd Semester. During Semester 1, we averaged 5,208 students per week, but enrollment started to decline in November and so far for Semester 2, we are averaging 5,180 student per week, 28 less students on average. You can see the weekly enrollment trend on the next page.



Packer Profile for all learners

- Austin Public Schools will administer **the Minnesota Comprehensive Assessments (MCA)** during April 2026, as required by MDE. These statewide assessments measure student progress toward Minnesota academic standards in reading, mathematics, and science. Students in grades 3–8 and 10 will participate in MCA-IV Reading and grades 3-8 and 11 for Mathematics assessments. Science assessments will be administered to students in grades 5, 8, and once in high school. For Spring 2026, districts will continue transitioning from MCA-III assessments to the updated MCA-IV assessments in Reading and MCA-IV Math coming online in 2028. MCA-IV reflects revised academic standards and includes enhancements designed to better measure critical thinking, application of knowledge, and real-world problem solving. Testing will be conducted online during April, with schools coordinating schedules to ensure a secure and supportive testing environment. Results from these assessments provide valuable data used to monitor student growth, inform instructional practices, and meet state and federal accountability requirements. District and building leaders will review results in the summer and fall to identify trends, support continuous improvement efforts, and ensure all students are progressing toward college and career readiness.

District-wide multi-tiered systems of support for all learners

- Information Services is working with building leadership and leveraging **RenaissanceNext (RenNext)** for Leaders as a centralized dashboard to monitor the implementation and effectiveness of our Freckle and Lalilo purposeful practice programs. This tool provides real-time visibility into student usage, engagement, and progress across schools, classrooms, and grade levels. Through RenaissanceNext, district and building leaders can track key metrics such as time on task, standards mastery, and skill progression. This allows us to ensure that both Freckle (math and ELA practice) and Lalilo (early literacy development) are being used with fidelity and are supporting targeted instructional goals.

Excellence in Resource Management

- Information Services is partnering closely with APS Technology Services to implement **ClassLink** and its **OneSync** platform to modernize and streamline our user account provisioning and rostering processes. Through OneSync, we are automating the creation, updating, and management of student and staff accounts by establishing secure, real-time connections between our data/information systems and key instructional applications. This reduces manual processes, minimizes errors, and ensures that users have timely and accurate access to the digital tools they need. In addition, ClassLink is improving our rostering practices by standardizing how student, staff, and course data are shared across systems that do not currently support our GlobalMS OneRoster Provisioning standards. This supports stronger integration with some of our instructional platforms allowing for more seamless data interoperability.