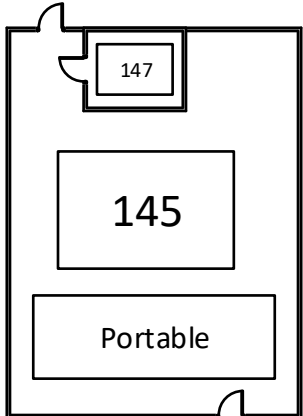


**Option 1:  
JRH Annex**

- 162A-Superintendent
- 162B-Director of Finance
- 162C-Accounts Payable
- 162D-HR Director
- 162E-Director of SPED
- \*all spaces built to 10'x12'

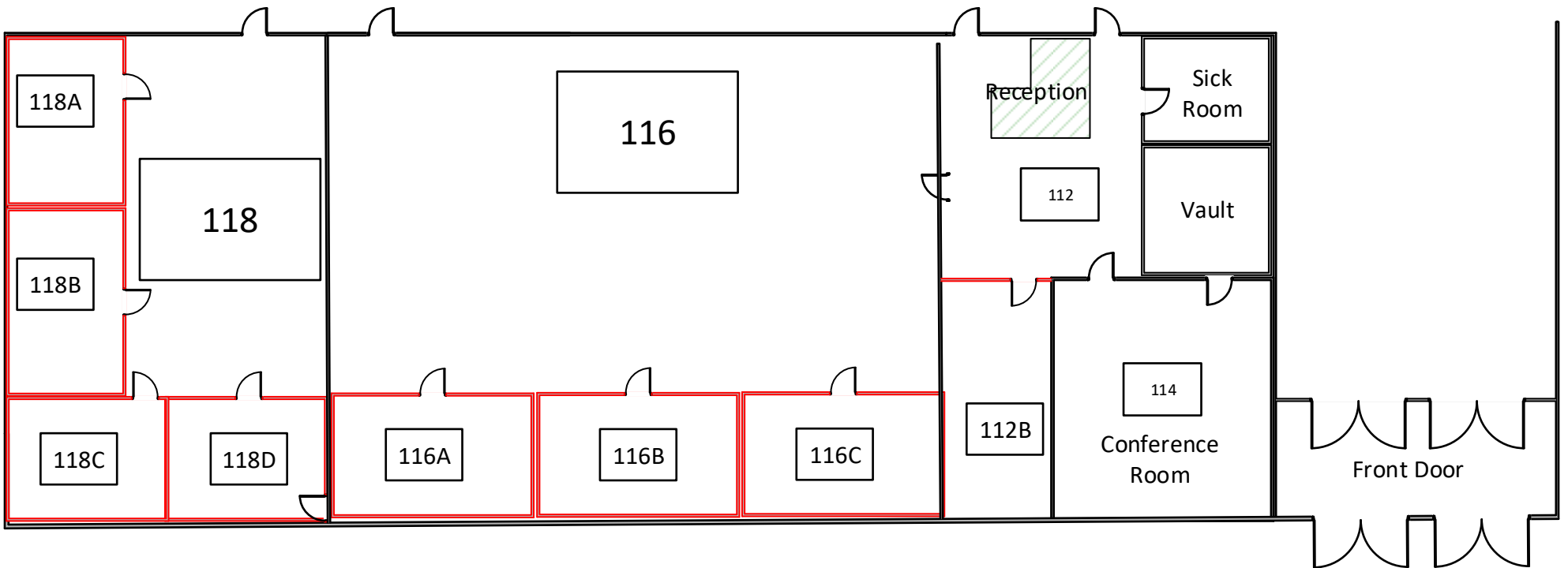
160-Child Nutrition  
Director



**Annex  
Basement**

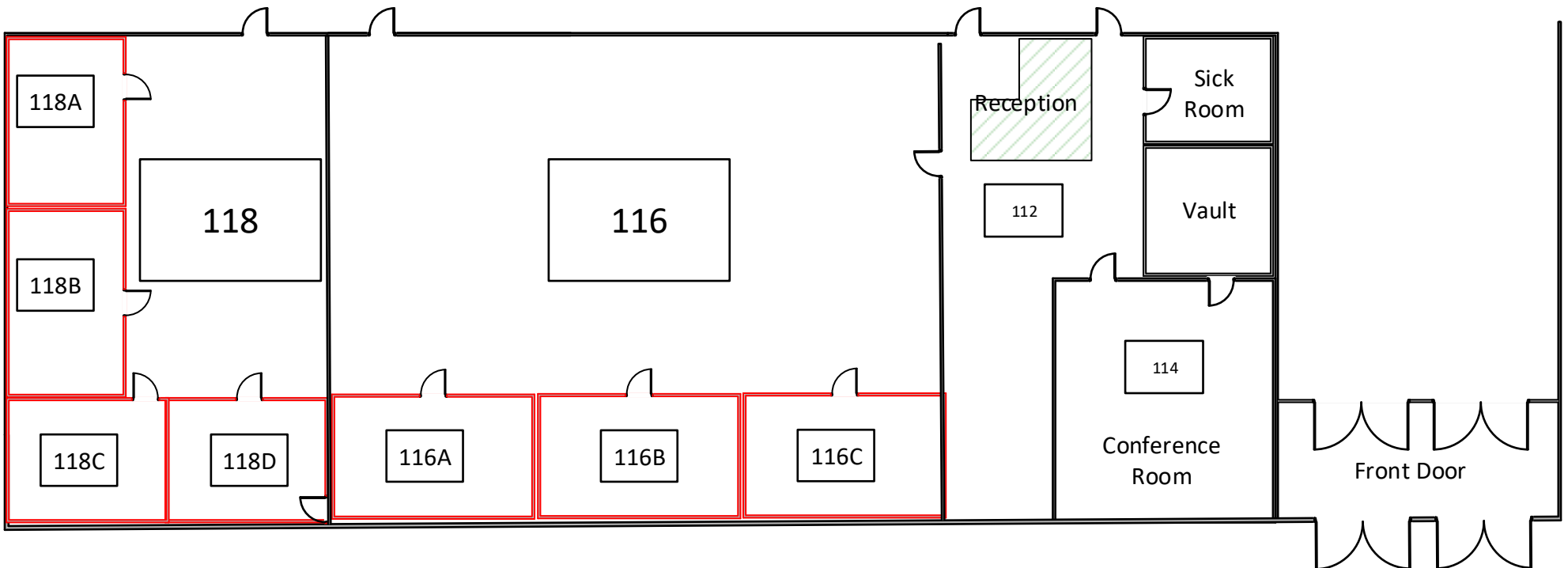
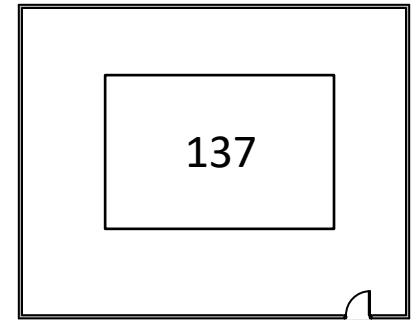
Option 2: JRH Main Building

- 112B-Superintendent
- 116A-HR DirectorAccounts Payable
- 116B-Accounts Payable
- 116C-Director of Finance
- 118A-District Records
- 118B-SPED Records
- 118C-Child Nutrition Director
- 118D-SPED Director



Option 3: JRH Main Building

- 116A-Accounts Payable
- 116B-Director of Finance
- 116C-Superintendent
- 118A-District Records
- 118B-SPED Records
- 118C-Child Nutrition Director
- 118D-HR Director
- 137-SPED Director



Option 4: JRH Main Building

- 106A-District Records
- 106B-SPED Records
- 110-Hr Director
- 112-Reception
- 114-Conference Room
- 116-Superintendent
- 118-Child Nutrition Director
- 137-Director of SPED
- 139-Director of Finance/Accounts Payable

