

Madison Experience - Grade 8

**AI is a rapidly advancing
field with the potential to
transform various aspects
of our lives.**



Set the Stage

“AI is a rapidly advancing field with the potential to transform various aspects of our lives.”

What is AI?

- A program that is capable of learning and thinking
- Performs a task that we would normally assume a human would perform
- Will have an impact on most people's lives
- Students may have a great understanding of AI, or they could know nothing

Your job, as a student, is to improve your understanding of the world around you, so that you will be able to make informed decisions and lead a successful life no matter what you choose to do in the future.

Day 1

“AI is a tool. The choice about how it gets deployed is ours.” ~ Oren Etzioni ~

- 1) Watch introductory video
- 2) Write questions about AI using the **Initial Question sheet**
- 3) Read and analyze, **“Introductory Article about AI”**
Common Information

- 4) **Review and analyze sources:**
Informative, Expressive,
Experiential -- *Choice*
- 5) Revise questions with the goal of improving your initial questions
- 6) Students select questions to pose to an AI expert

Sample Sources



INFORMATIVE

- **Articles**

Top 10 positive impacts of AI

- **Videos & Comics**

Journalist had a creepy encounter with new tech that left him unable to sleep

- **Graphics**

How companies are using AI - Charts, graphs

EXPERIENTIAL

- **Quiz**

Identify human vs AI created art

- **Songs**

Created by AI

- **Samples** created by Chat GPT



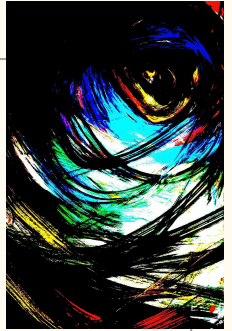
EXPRESSIVE

- **Literary**

Quotes, poems, articles

- **Visual**

I Challenged My AI Clone to replace me for 24 hours

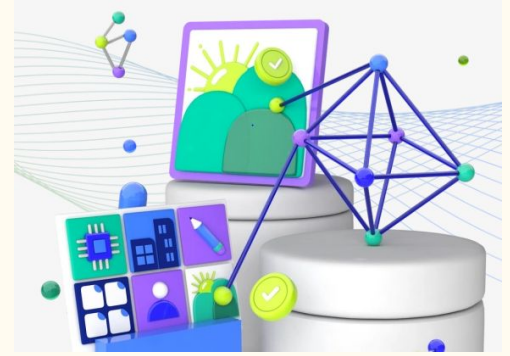


Day 2

7) Meet an AI expert; students add information to their sources.

8) Prepare for Roundtable - plan to support their points!

9) Review criteria for success for Collective Intelligence and Alt. Perspectives.



10) Share learning/opinions. Ask questions; think about what peers share.

11) Compose final thoughts and new understanding. Reflect and evaluate on their participation using the self-assessment rubric.

Profile of a Graduate

All Students:

- **Inquiry**: Posing, pursuing, and refining significant questions to deepen understanding about a topic or issue.



Students select ONE of the following capacities:

- **Collective Intelligence**: Working respectfully and responsibly with others, exchanging and evaluating ideas to achieve a common objective.
- **Alternate Perspectives**: Interpret or critique complementary and competing approaches, experiences, and worldviews order to develop an empathetic perspective.



Feedback to Students

- Profile of a Graduate Rubric
 - Inquiry
 - Collective Intelligence OR Alt. Perspectives
- Assessed by 8th grade core and RA teachers
- Emphasis on process not product
- Record in Google Sheets for grade level analysis
- Survey completed by students
- Reflect and revise for future



Grade 8 Madison Experience

**The Impact of AI on our
world**

Interdisciplinary

Engaging

Complex

Relevant
