

**NORTHWEST ARCTIC BOROUGH SCHOOL DISTRICT**

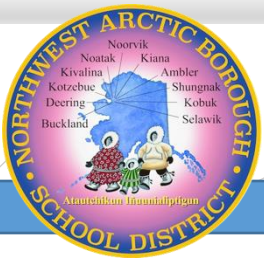
*Atautchikun Iñuunialiptigun (Through Our Way of Life Together as One)*

# ***Enrollment, Attendance & OASIS***

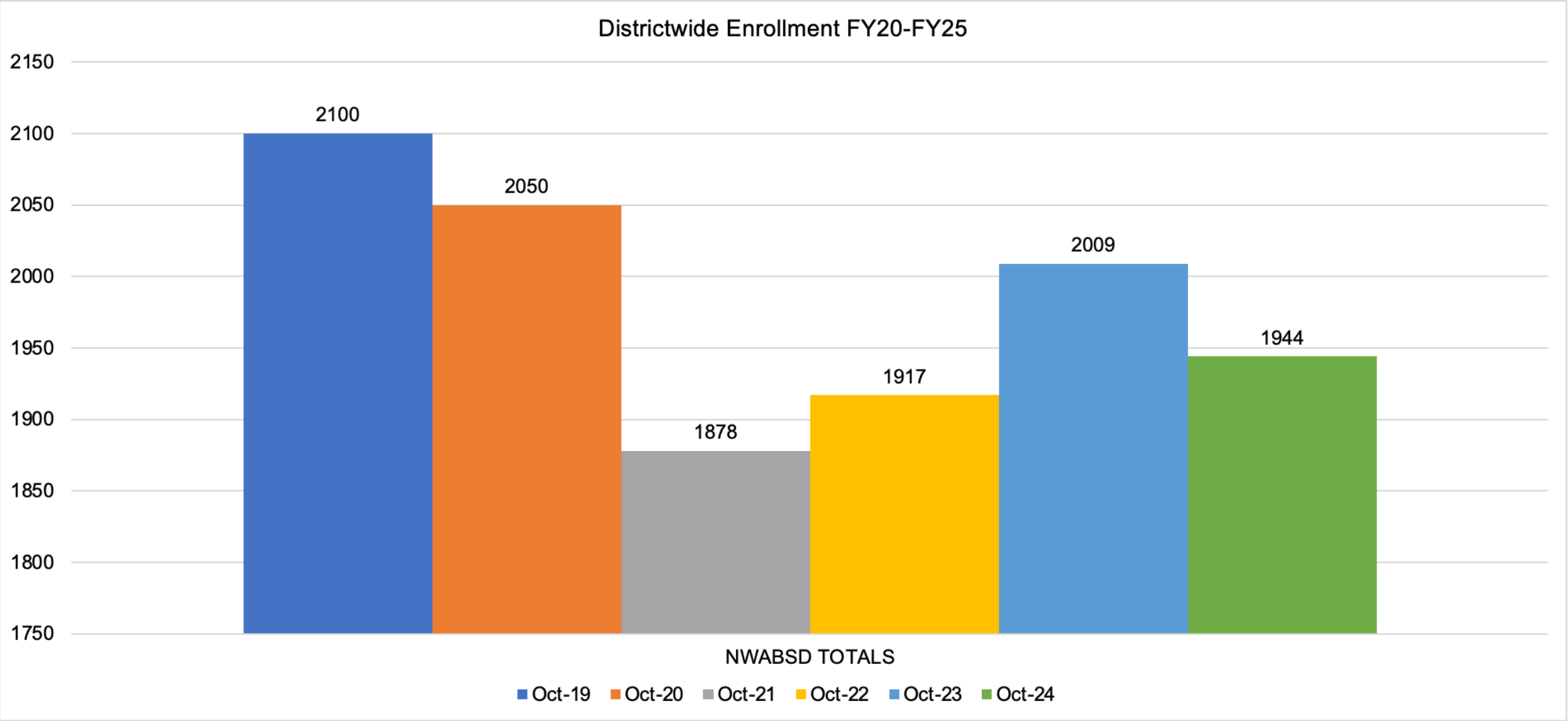
**How Everything Plays a Role in State Funding**

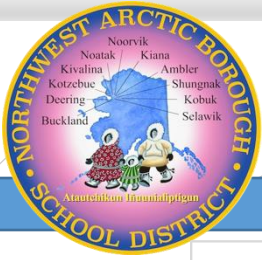


1. Overall District Enrollment FY20-FY25
  - a) Small School Enrollment FY20-FY25
  - b) Medium School Enrollment FY20-FY25
  - c) Large School Enrollment FY20-FY25
2. Absenteeism
3. Attendance Initiatives
4. Oasis
  - a) What is OASIS?
5. Full-Time Equivalent (FTE)
6. Adjusted Average Daily Membership (AADM)

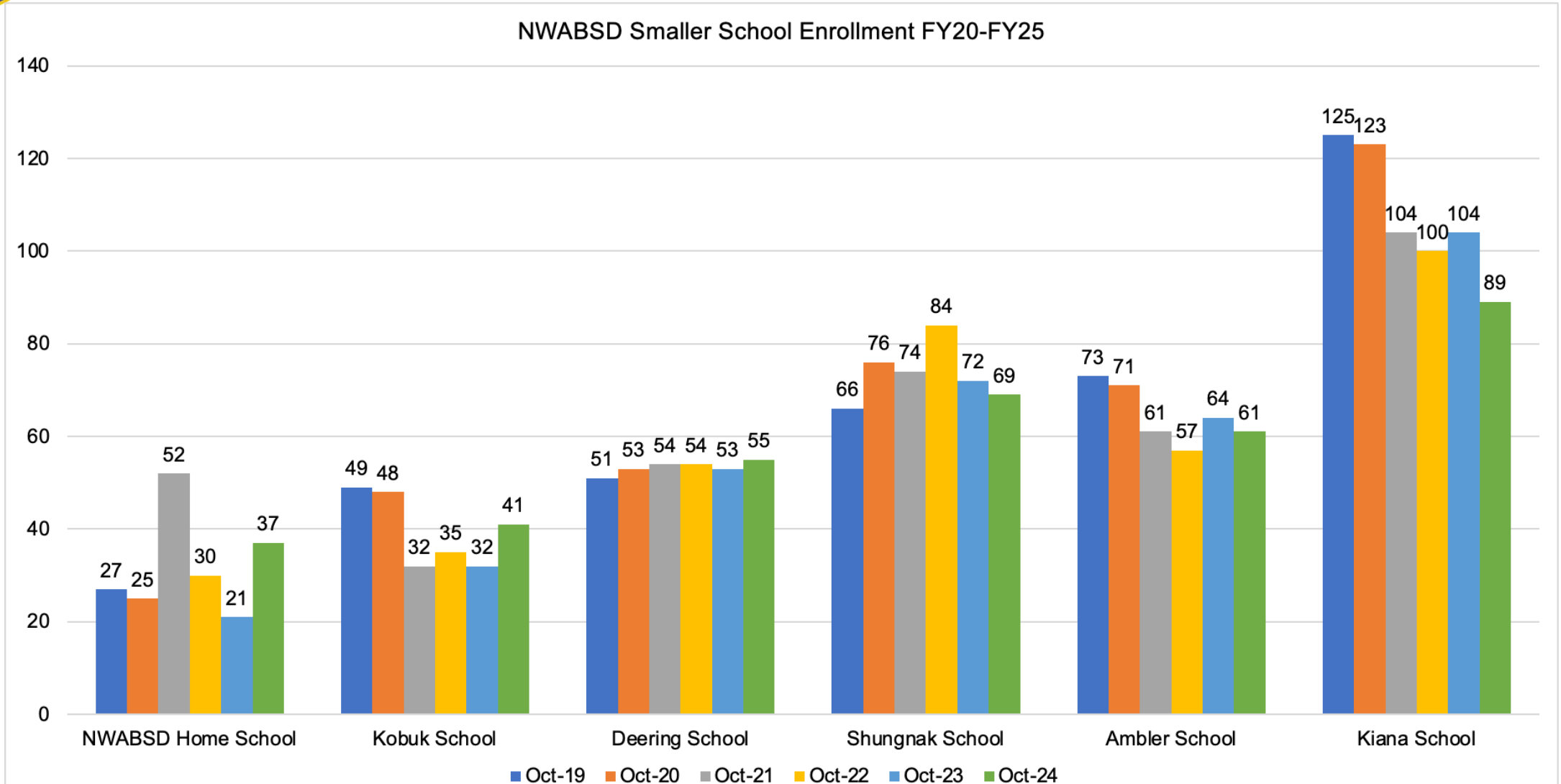


# Enrollment FY20-25





# Small School Enrollment

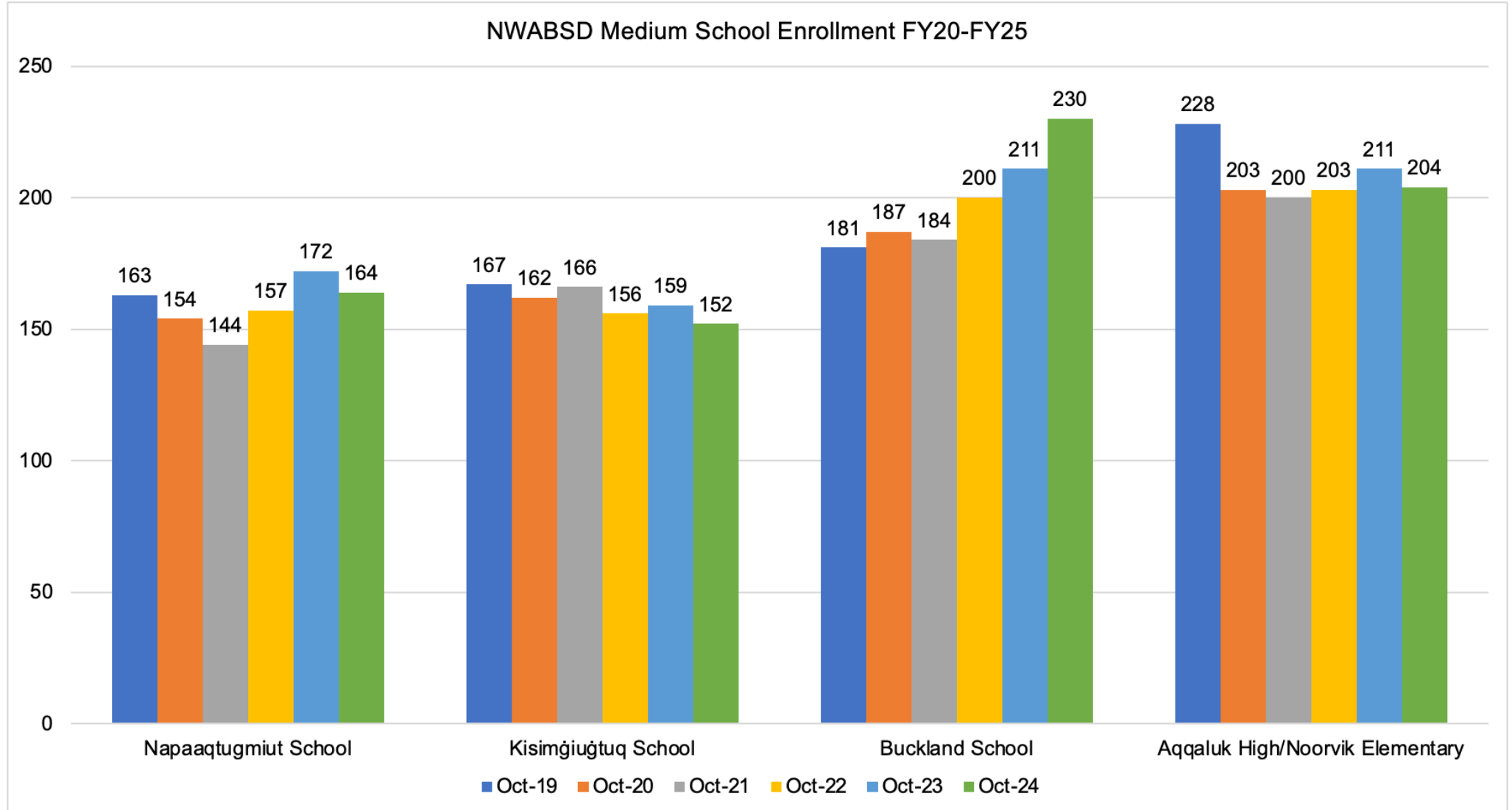


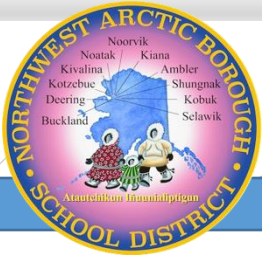


# NORTHWEST ARCTIC BOROUGH SCHOOL DISTRICT

*Atautchikun Iñuunialiptigun (Through Our Way of Life Together as One)*

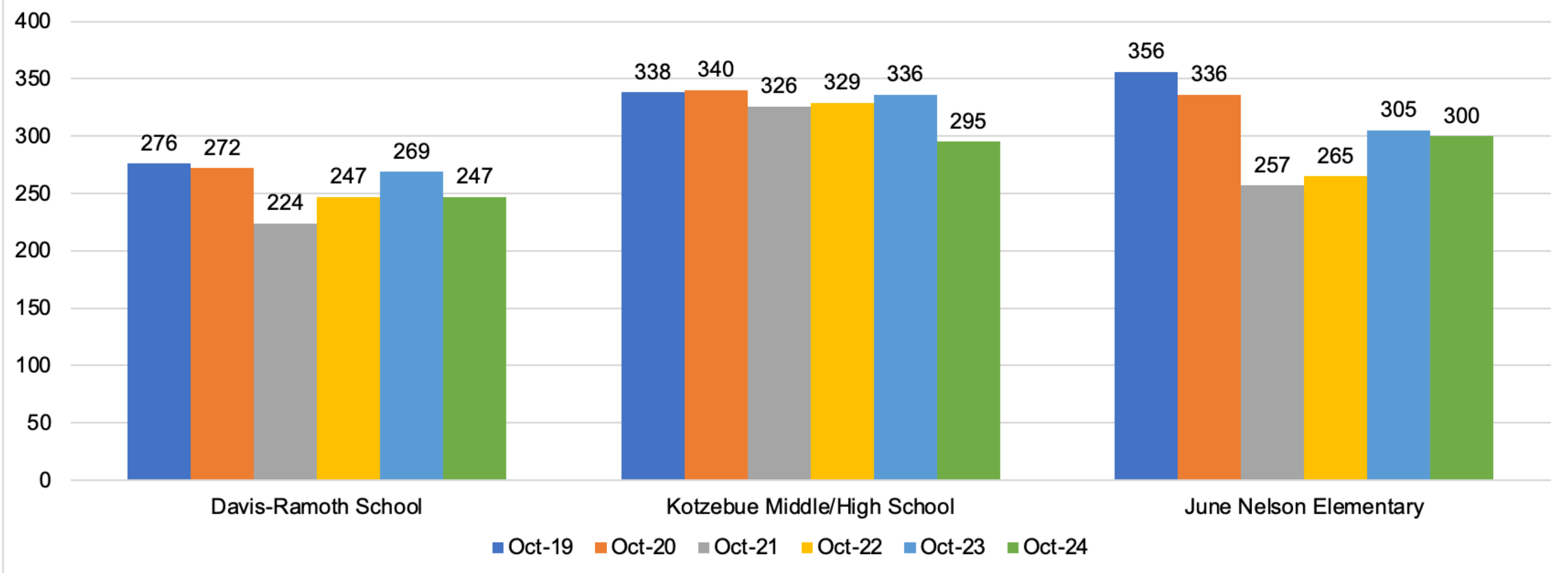
# Medium School Enrollment





# Large School Enrollment

NWABSD Larger School Enrollment FY20-FY25





# NORTHWEST ARCTIC BOROUGH SCHOOL DISTRICT

*Atautchikun Iñuunialiptigun (Through Our Way of Life Together as One)*

## K-12 Attendance FY25

Categories	Percent Attendance	Days Absent
Regular Attendance	95%-100%	8.6 Days or Less
At-Risk Attendance	90%-94.9%	17.2 - 8.7 Days
Chronic Absence	80%-89.9%	34.4 - 17.3 Days
Severe Chronic Absence	80% and below	36.12 Days or more

### As of JAN 2025 for the 2024-2025 School Year:

1. 31% of students with chronic absences
2. 44% of 12th grade with chronic absences
3. 615 of 1940 students missed at least 9 days of school

Ambler School	81.37%
Buckland School	85.29%
Deering School	84.74%
Kiana School	75.52%
Kisimgiugtuq School	60.06%
Kobuk School	90.72%
June Nelson Elementary	83.73%
Kotzebue Middle/High School	80.56%
Napaaqtugmiut School	78.63%
Aqqaluk High/Noorvik Elementary	80.29%
Davis-Ramoth School	76.90%
Shungnak School	78.14%
District	79.56%



## Absenteeism Survey AUG 2025

### 456 student responses

- Minor Illness
- Appointment
- Spending time with Parent
- Too Cold to walk
- Taking Care of siblings
- School sports activities

37% of respondents

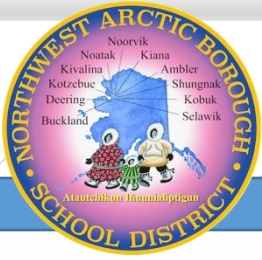
30% of respondents

30% of respondents

26% of respondents

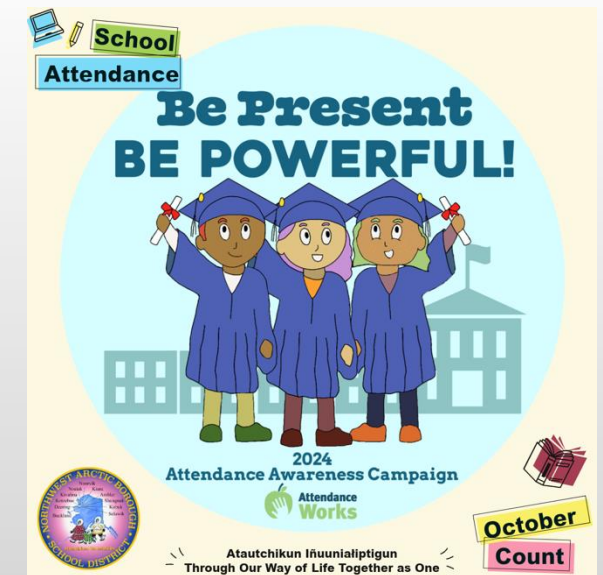
22% of respondents

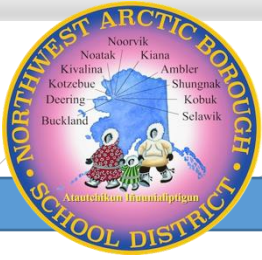
22% of respondents



## What was done:

1. Implement class and school Initiatives to reduce absenteeism
2. The Attendance Incentive Program was to encourage parents
3. Facebook and KOTZ Radio Station PSA's





- **Online Alaska School Information System**

- Operated by the Office of Assessments and Student Information in the Division of Teaching and Learning Support.
- The responsibilities of this office include the collection, analysis, and publication of student and education information.
- The Fall OASIS (aka 20-day Count or October Count) determines District state funding.
- Districts report the students that they have enrolled and how many days they were enrolled.



## How is FTE (full-time equivalent) enrollment defined for Elementary & Secondary?

### **Elementary (Grades KG-6)**

<u>FTE</u>	<u>Description</u>	<u>Defined</u>
1.00	(full-time)	4 contact hours or more in a day
0.75	(3/4 time)	3 hours or more, but less than 4 hours in a day
0.50	(1/2 time)	2 hours or more, but less than 3 hours in a day
0.25	(1/4 time)	Less than 2 hours per day

### **Secondary (Grades 7-12) per Semester (due to spring reconciliation)**

<u>FTE</u>	<u>Description</u>	<u>Defined</u>
1.00	(full-time)	4 Courses
0.75	(3/4 time)	3 Courses
0.50	(1/2 time)	2 Courses
0.25	(1/4 time)	1 Course

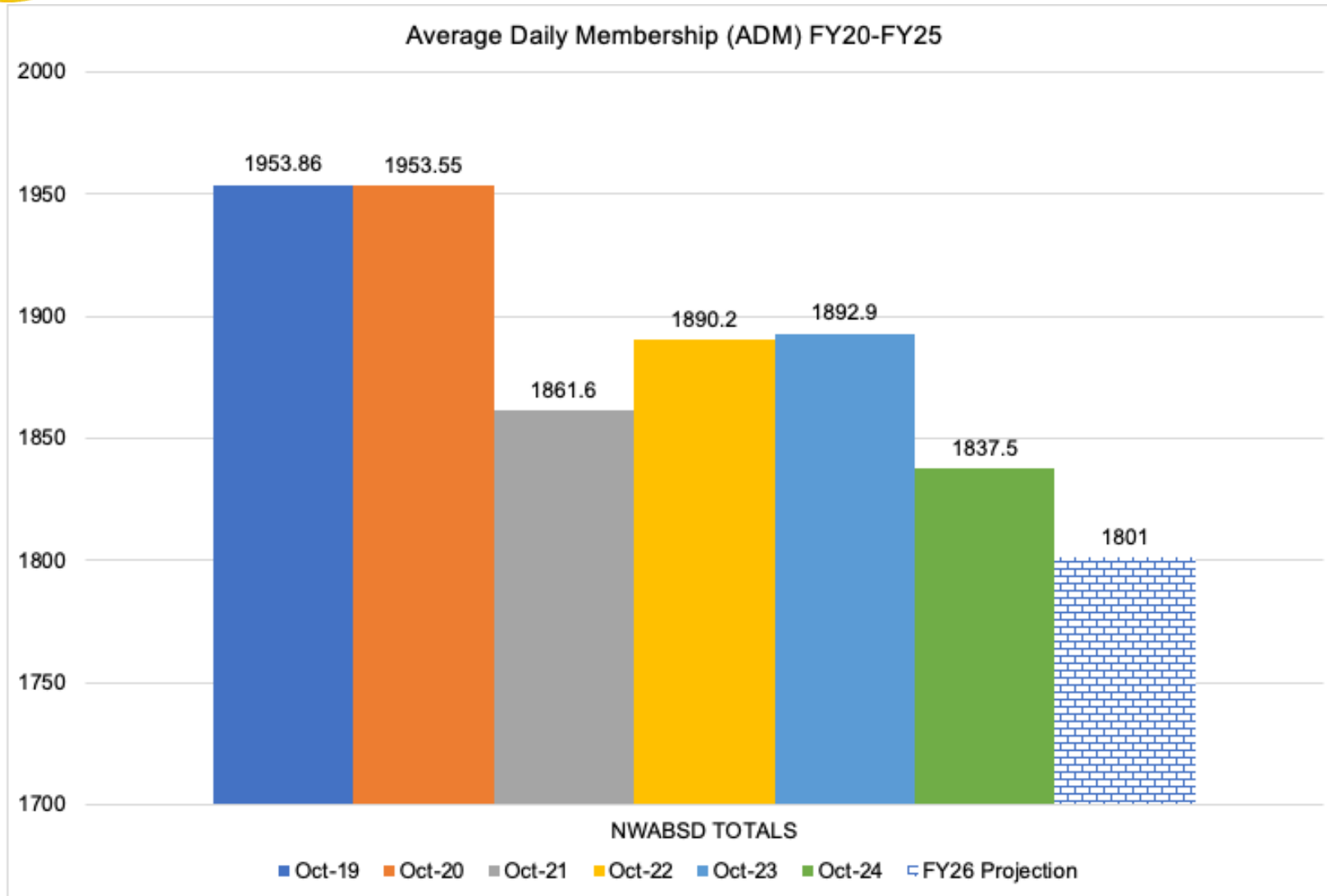


# NORTHWEST ARCTIC BOROUGH SCHOOL DISTRICT

*Atautchikun Iñuunialiptigun (Through Our Way of Life Together as One)*

## Average Daily Membership(ADM)

The average daily membership (ADM) is the number of students enrolled (FTE) in our schools, averaged over the 20 days in October.





## 1. Enrollment

- How many students PK-12 are enrolled in the district.

## 2. Full-time Equivalent (FTE)

- Enrollment reconciled by the hours students attend and student course enrollments; does not generally include PK

## 3. Average Daily Membership (ADM)

- This is the basic number of students enrolled (FTE) in a school or district, averaged over the specific 20 days in October.

## 4. Adjusted Average Daily Membership (AADM)

- ADM adjusted by school size, District cost factor, special/intensive needs, correspondence and CTE; meant to provide a better understanding of a Districts funding needs

## 5. Base Student Allocation (BSA)

- The AADM multiplied by the BSA, a per-student dollar amount set by the state (\$6,600 for FY26), to determine the "basic need" for a school or district.



## Foundation Funding Formula

The current state public school funding formula was adopted under Senate Bill 36 in 1998 and implemented in 1999.

The public-school funding formula is defined in [Alaska Statute 14.17](#), State Aid to Public Schools.

### **District Adjusted Average Daily Membership (AADM)**

Step 1. Adjust: ADM for School Size

Step 2. Apply: District Cost Factor

Step 3. Apply: Special Needs Factor

Step 4. Apply: Vocational & Technical Funding

Step 5. Add: Intensive Services Count

Step 6. Add: Correspondence Student Counts

**= District Adjusted (AADM)**

$AADM \times \$6,600(\text{FY26 BSA}) = \text{NWABSD Funding}$



# NORTHWEST ARCTIC BOROUGH SCHOOL DISTRICT

*Atautchikun Iñuunialiptigun (Through Our Way of Life Together as One)*

# District Funding

## Enrollment

- How many students PK-12 are enrolled in the district.

## Average Daily Membership (ADM)

- This is the basic number of students enrolled (FTE) in a school or district, averaged over the specific 20 days in October.

## Base Student Allocation (BSA)

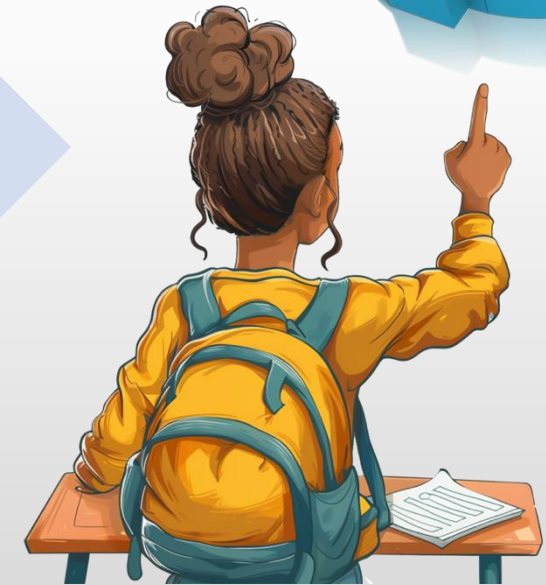
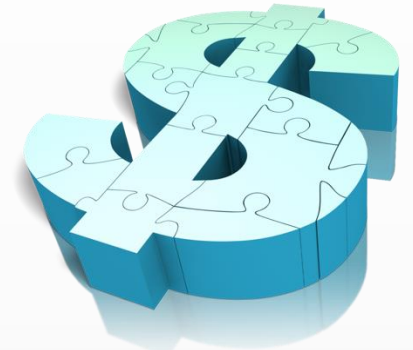
- The AADM multiplied by the BSA, a per-student dollar amount set by the state (\$6,600 for FY26), to determine the "basic need" for a school or district.

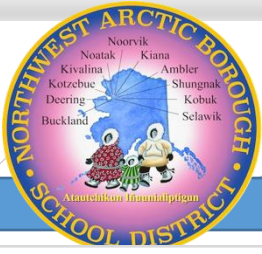
## Full-time Equivalent (FTE)

- Enrollment reconciled by the hours students attend and student course enrollments; does not generally include PK

## Adjusted Average Daily Membership (AADM)

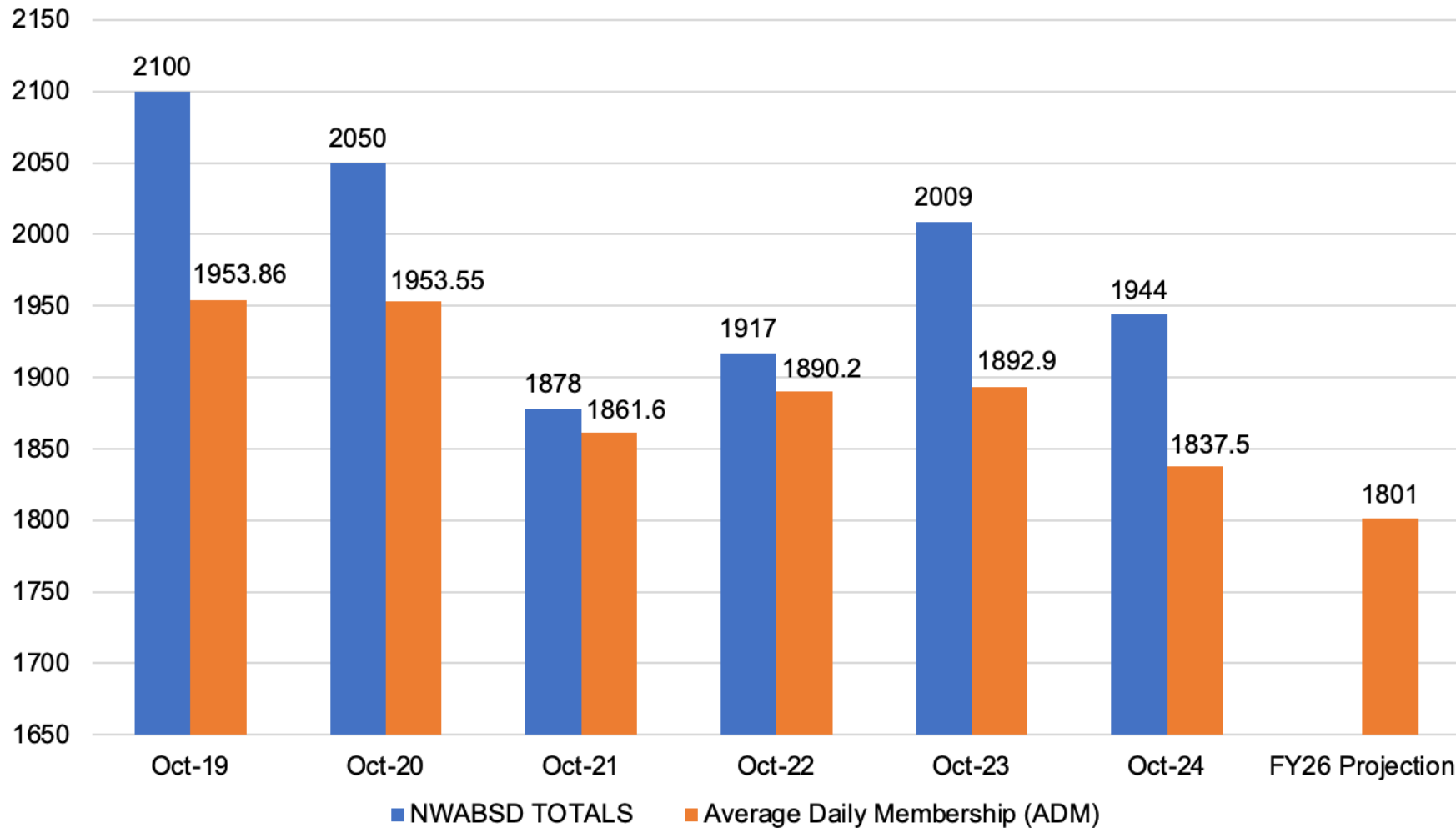
- ADM adjusted by school size, District cost factor, special/intensive needs, correspondence and CTE; meant to provide a better understanding of a Districts funding needs





# Enrollment vs ADM

Enrollment vs Average Daily Membership



## Why is the ADM lower than enrollment?

1. Not all 7-12 students are enrolled in 4 courses per semester.
2. Some students are Pre-K and do not count towards FTE.
3. Some students are Homeschool (correspondence).



# NORTHWEST ARCTIC BOROUGH SCHOOL DISTRICT

*Atautchikun Iñuunialiptigun (Through Our Way of Life Together as One)*

