



**St. Louis Park  
Public Schools**

# **April 2025 Construction Update**

 **Knutson** Construction

# SLP Public Schools Central Community Center

The Central Community Center Gym and Pool Remodel project involves renovating the locker rooms & showers, upgrading pool systems to include a wheelchair lift, refurbishing the pool gutter and three gym areas, and converting existing space into a boardroom/training room. Additionally, the project includes replacing part of the built-up roof.

---



SLP Central Community Center – Pool  
Locker Area



SLP Central Community Center – Family  
Area Bathroom



SLP Central Community Center – Pool  
Area Lift

An indoor swimming pool with lane lines and orange and black bunting. The pool is surrounded by a wooden deck with railings. There are signs on the wall, including one that says "ST LOUIS PARK AQUATICS" and another that says "POOL RULES". The ceiling has exposed pipes and lights.

# SLP Central Community Center – Pool Refresh



SLP Central Community Center – Pool  
Equipment Replacement



SLP Central Community Center – Demo of New Gymnastics Gym



A wide-angle photograph of a large, empty gymnasium under construction. The room features a high ceiling with a complex network of white metal trusses and ductwork. The walls are composed of white and light green panels, with a row of windows on the left side. The floor is made of light-colored wood. In the center and right side of the room, there are stacks of large, dark grey HVAC ducts and pipes. A black door with an 'EXIT' sign is visible in the background. A black wheelbarrow with 'MP MP' written on it is in the foreground on the right. An orange banner at the bottom contains white text.

SLP Central Community Center – HVAC  
Install for New Multi-Purpose Gym

# SLP Aquila Elementary Addition and Remodel

The Aquila Elementary Addition and Remodel project consists of a 15,000 SF addition. The new spaces created in the addition are: 4 Kindergarten Rooms each with a separate bathroom, Kids Place Area, Music Room, and Flex Space / Storm Shelter with bathrooms, and mechanical rooms.

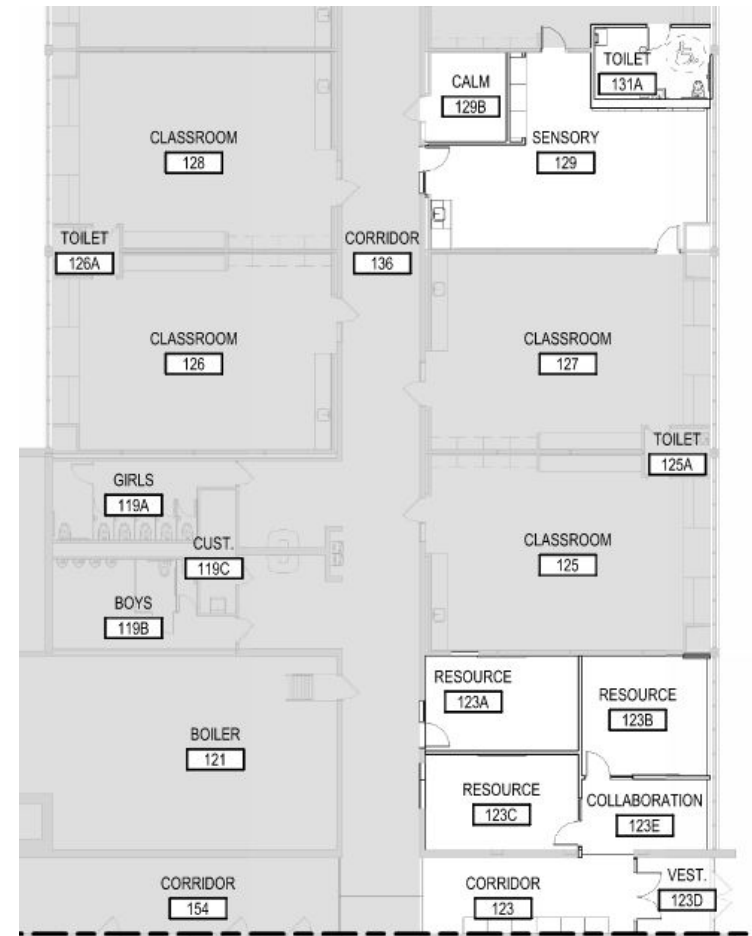
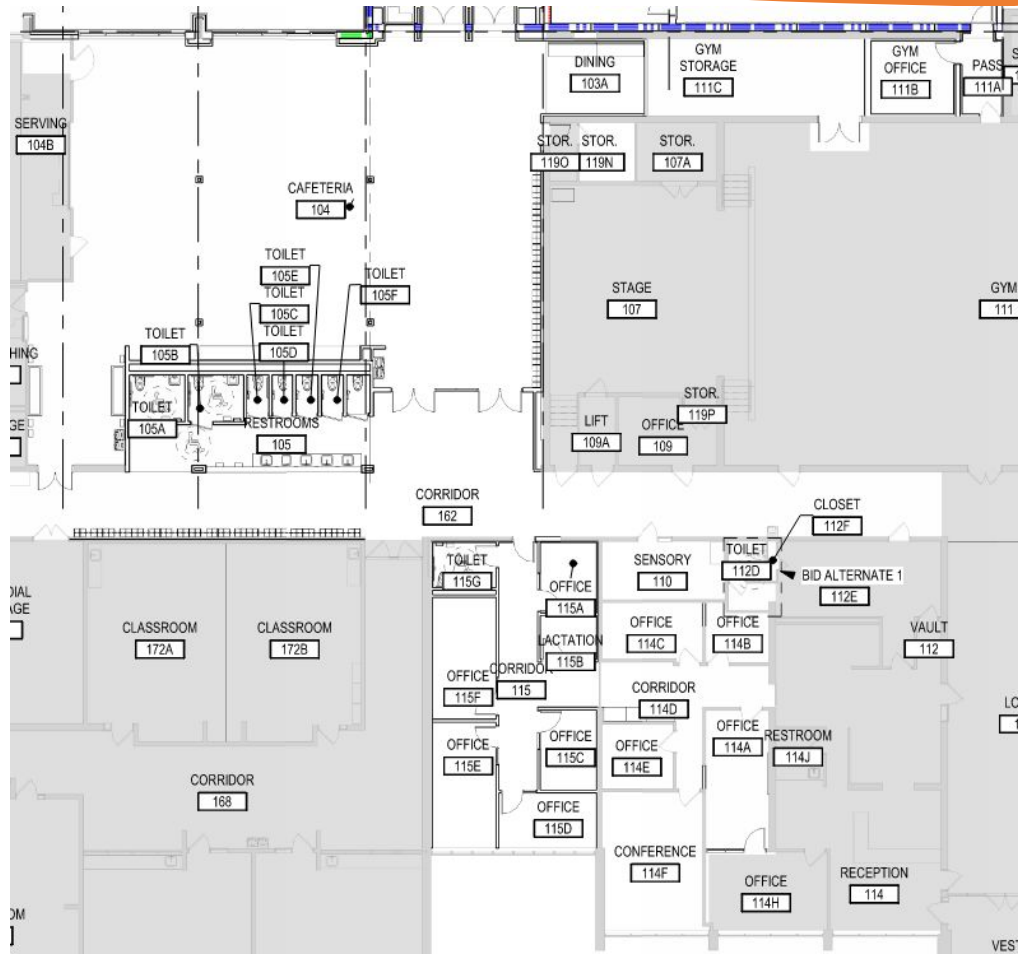
The summer remodel will refresh and enlarge the cafeteria, expand the office space, and provide a new resource and sensory area

---

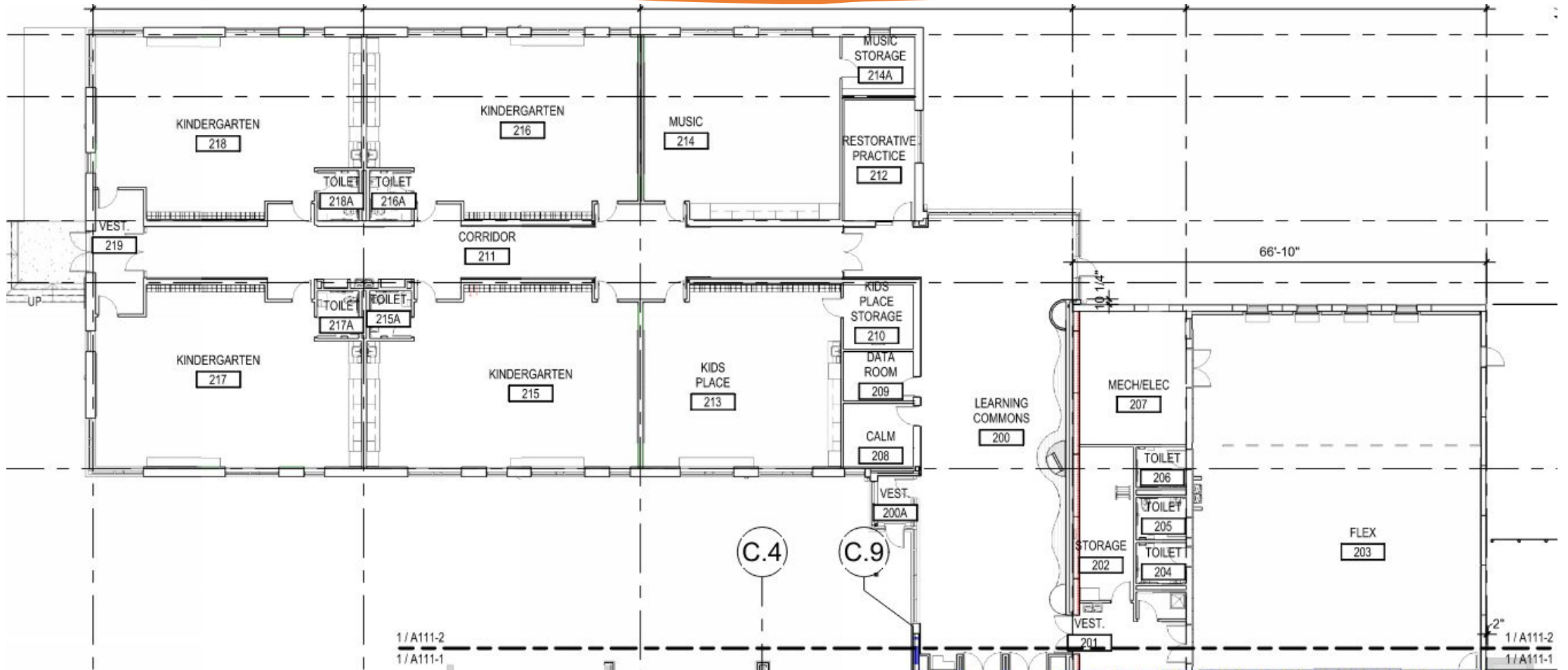
# SLP Aquila Elementary – Updated Timeline

- June 9, 2025 – Start Interior Remodel
- August 15, 2025 – Complete Office, Sensory, and Resource Areas
- August 29, 2025 – Complete Cafeteria Area
- October 17, 2025 – Addition Construction Complete
- October 31, 2025 – Final Clean Complete
- November 3, 2025 – Start Furniture and Classroom Technology Installation
- December 22, 2025 – Start Moving into New Addition
- January 5, 2026 – Addition Ready for Staff and Students

# SLP Aquila Elementary – Remodel Floor Plan



# SLP Aquila Elementary – Addition Floor Plan





SLP Aquila Elementary – Soil Correction Completed



SLP Aquila Elementary – Flex Space Foundation



SLP Aquila Elementary – Classroom Area Foundation





SLP Aquila Elementary – Learning Commons Foundation



SLP Aquila Elementary – Flex Space Precast Walls



SLP Aquila Elementary – Flex Space  
Precast

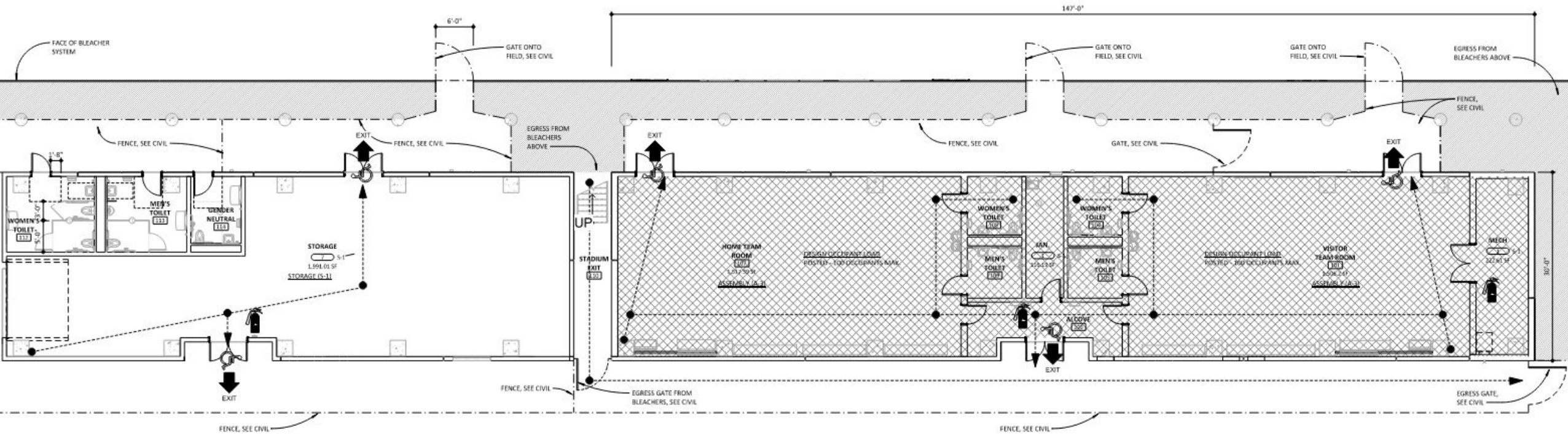
# SLP Public Schools High School Stadium Team Rooms

The high school stadium team room project consists of the removal of the existing home side bleachers. The construction of a new storm shelter and storage building (approximately 7,000 SF combined), new accessible bleachers, and replacement of the existing turf carpet.

The storm shelter will consist of two team rooms, four restrooms, and mechanical rooms. The storage building is a separate building with two group restrooms and a gender-neutral restroom.

---

# SLP High School Team Rooms – Floor Plan



# SLP High School Team Rooms – Renderings





SLP HS Stadium – Storage of Press Box



# SLP HS Stadium – Bleacher Demo





SLP HS Stadium – Precast Wall Mock-up

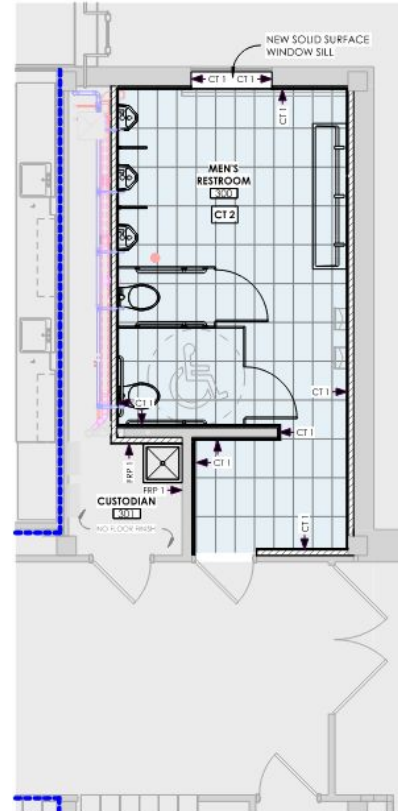
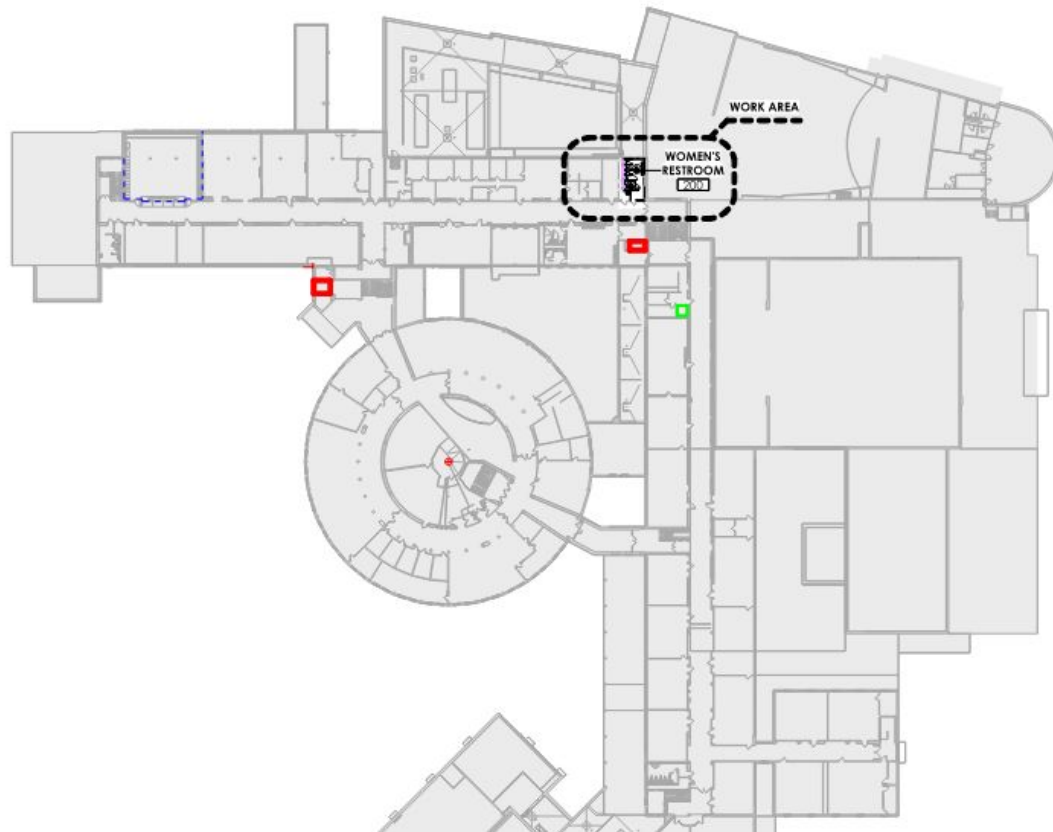
# SLP Public Schools High School Restroom Remodel 2025

The high school restroom remodel 2025 project consists of removing all finishes, common plumbing wall and plumbing related to the two bathrooms. Then reconstructing with new piping, fixtures, walls, and all finishes and lighting.

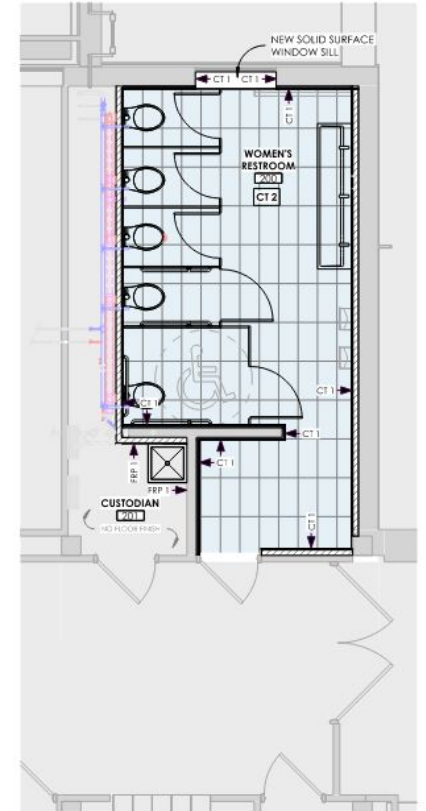
The two bathrooms being reconstruction are on the east side of unit a building.

---

# SLP High School Restroom Remodel 2025 – Floor Plan



**2** FINISH PLAN - THIRD LEVEL - MEN'S RESTROOM  
1/4" = 1'-0"



**1** FINISH PLAN - SECOND LEVEL - WOMEN'S RESTROOM  
1/4" = 1'-0"

Questions?

