

# SAFE ROUTES TO SCHOOL

## Executive Summary



## The Vision

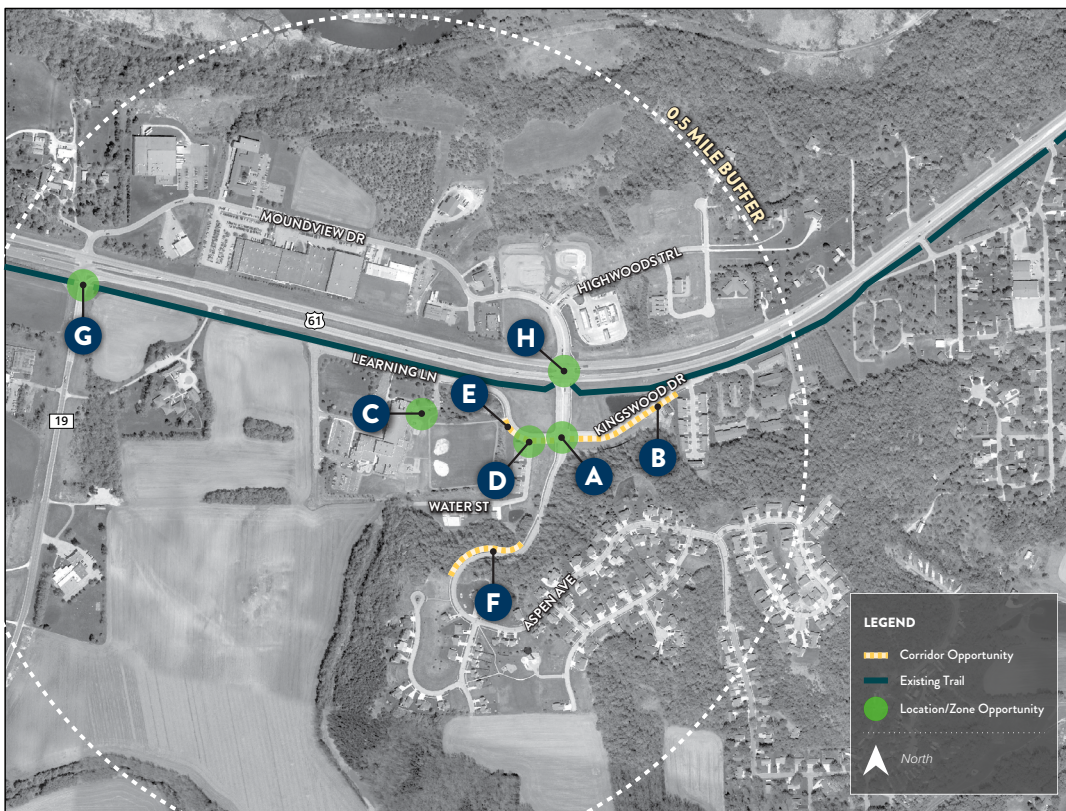
*A plan to make walking, biking, and rolling to school safer and more accessible for all students, and to provide for healthier, happier students both at school and in their community.*

In June 2023, the City of Red Wing, Goodhue County and Red Wing School District completed a year-long planning process that culminated in a Safe Routes to School (SRTS) plan. The plan identifies infrastructure improvements and program strategies to create a safe, comfortable, and fun active transportation system and culture of walking and biking to school with a focus on addressing equity in transportation and meeting the needs of underresourced groups.

This summary highlights **high-priority infrastructure recommendations and selected program recommendations.**

## Infrastructure

*Engineering projects that improve streets and routes*



**A**

In the short-term, refresh the high-visibility crosswalks and add school crossing signage on Aspen Avenue. Medium term, add a rectangular rapid flashing beacon (RRFB) at the crossing with advance warning signs and speed feedback signs along Aspen Avenue. Add quick-build lane reductions with curb extensions or medians. In the long-term, formalize the quick-build improvements with permanent materials.

**D/E**

At Water Street and Learning Lane, reduce slippery crossing paint along the primary walking/bicycling route to school with high-visibility thermoplastic crosswalk markings. During the winter, implement sidewalk snow clearing strategy, either enforcing private clearance or having school or city clear snow.

**H**

In the short-term, the crossing could be improved through bump-outs, median enhancements, and/or signal modifications. Adding a Leading Pedestrian Interval to give crossing pedestrians a head start would be a good first step. In the long term, there could be potential for a grade-separated crossing to provide a safer option to provide families living north of Hwy 61, which has a relatively high equity priority score, access to a safe route.

### GET INVOLVED

Want to help make it safer, easier, and more comfortable to walk and bike to school in Paynesville? Contact your school principal or SRTS lead to learn how to get involved.

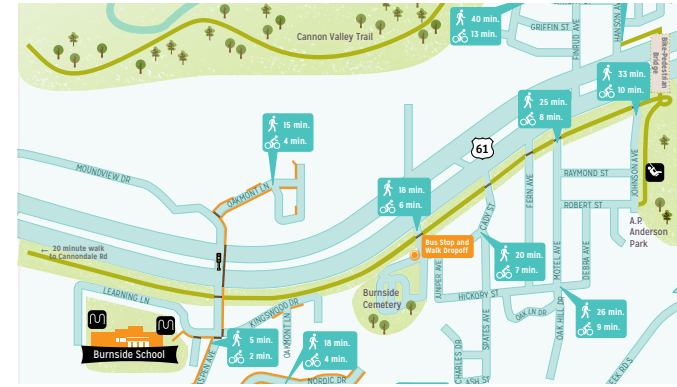
Gina Johnson | Live Well Goodhue County, Goodhue County, MN | [Gina.Johnson@co.goodhue.mn.us](mailto:Gina.Johnson@co.goodhue.mn.us)

Learn more about SRTS in Minnesota at [www.dot.state.mn.us/saferoutes](http://www.dot.state.mn.us/saferoutes)



## Programs

*Education, encouragement, engagement*



## Suggested Route Map

**When, where, and how will this be implemented?**

Review and update the Walk and Roll Map. The map can highlight safe routes to Burnside and other community destinations to use in parent education and encouragement.

**Why is this relevant and recommended?** Particularly when there are major barriers, maps can help guide students along relatively safe routes and to navigate difficult crossings safely.

**How will this address transportation inequities?** This program can provide families with a shared baseline understanding of walking conditions. The map could include stop and walk locations and highlight routes to bus stops to reach students who live farther from school.

**How will this be evaluated?** Annual caregiver survey.

**Who needs to be involved to make this happen?** School and city staff, MnDOT/SHIP.

**What is the timeline for implementation?** Short-term.



## Active School Day

**When, where, and how will this be implemented?**

Active school day activities can include Walk! Bike! Fun! curriculum, walking and biking field trips and active breaks.

**Why is this relevant and recommended?**

Many students live far from school and across the major barrier of Hwy 61, including areas with higher equity scores.

**How will this address transportation inequities?**

This will enable all students to get physical activity.

**How will this be evaluated?** Teacher survey.

**Who needs to be involved to make this happen?**

Staff and teachers, students, Live Well Goodhue County

**What is the timeline for implementation?** Short-term.