



**St. Louis Park  
Public Schools**

# **August 2024 Construction Update**

 **Knutson** Construction

# SLP Public Schools Senior High School Additions / Renovations

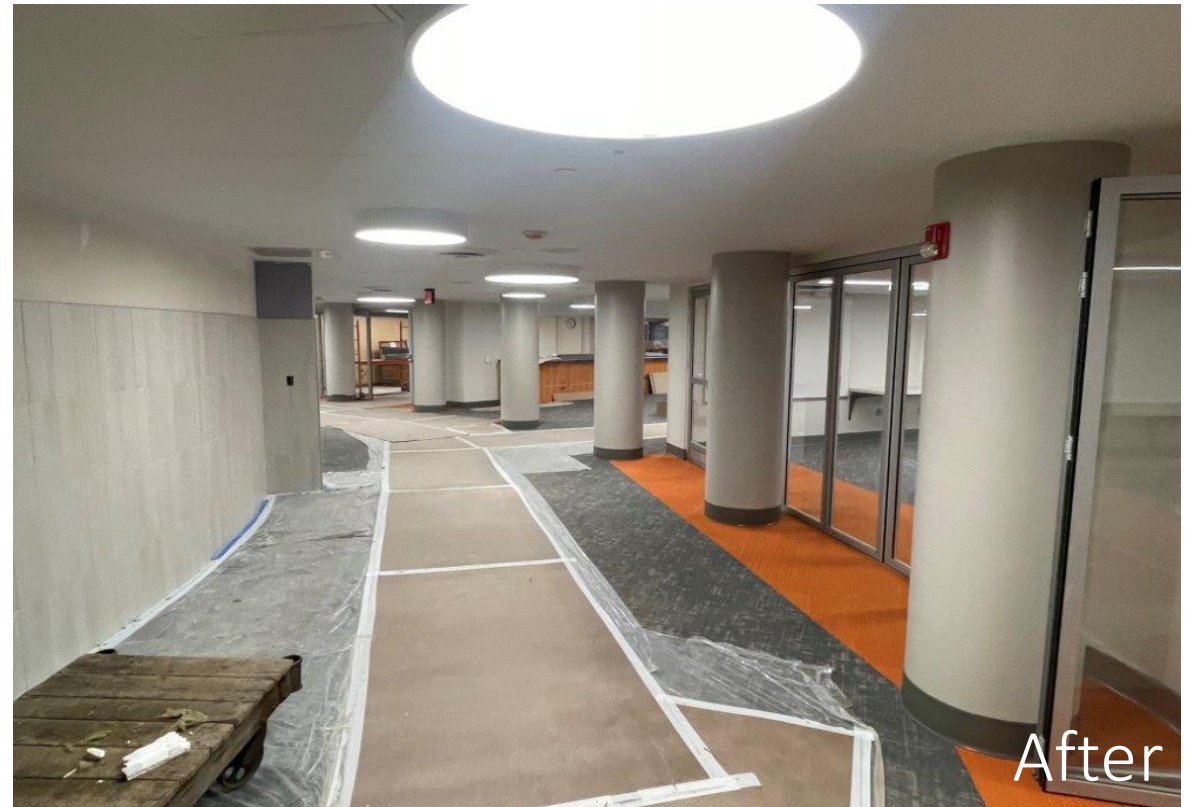
The project involves both additions and renovations of the existing high school. The scope includes:

- Level 2 & 3 Classroom Renovations
  - Storm Shelter Reconstruction
  - New Cafeteria and Link Addition
  - Parking Lot Reconstruction
  - Implementing a Stormwater Retention System
  - Reconstruction of the Track & Field Facilities
  - **Level 2 & 3 Classrooms:** Classroom remodels
  - **Storm Shelter:** Reconstruction of the basement corridor and unused rooms to create a new storm shelter
  - **Link:** Converting an unused courtyard into a 4,181 sq. ft. finished space.
  - **Cafeteria:** Expanding to a 14,171 sq. ft. area for dining, serving, cooking, and storage.
  - **Media Center:** Renovating 10,560 sq. ft. and study group rooms, lab space
-

# SLP High School - Media Center Entrance



Before

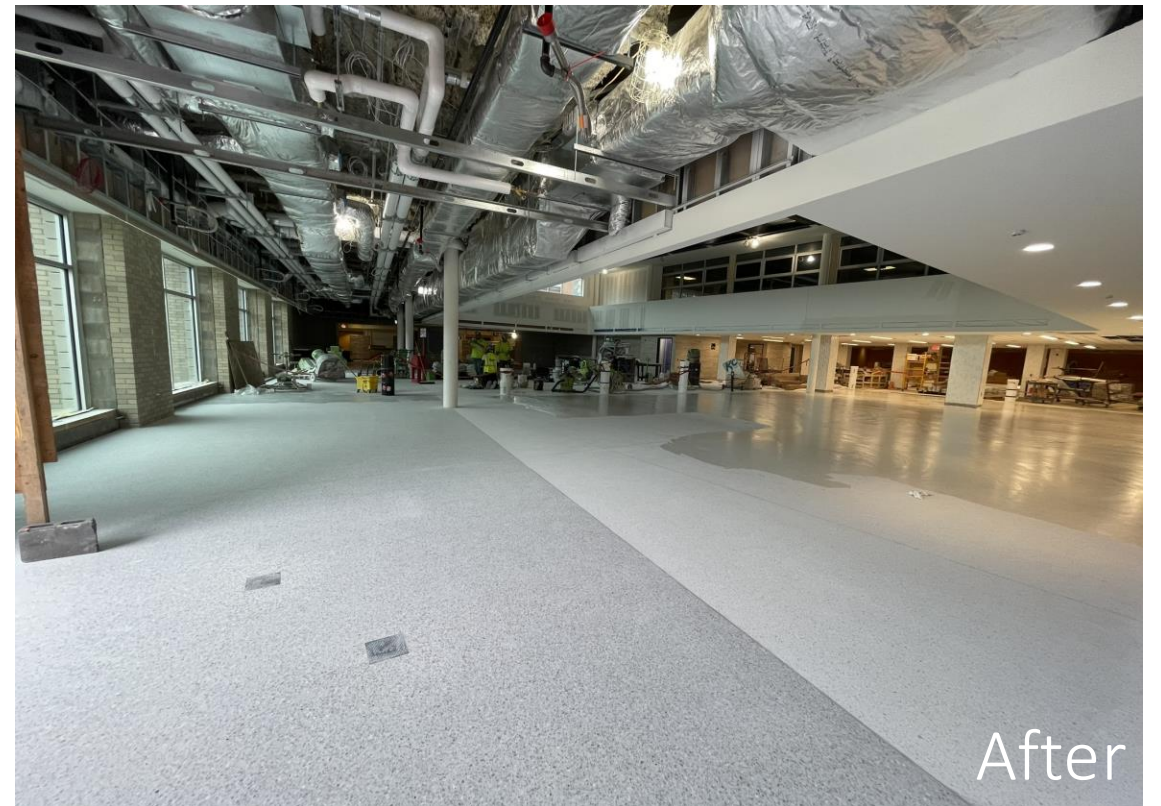
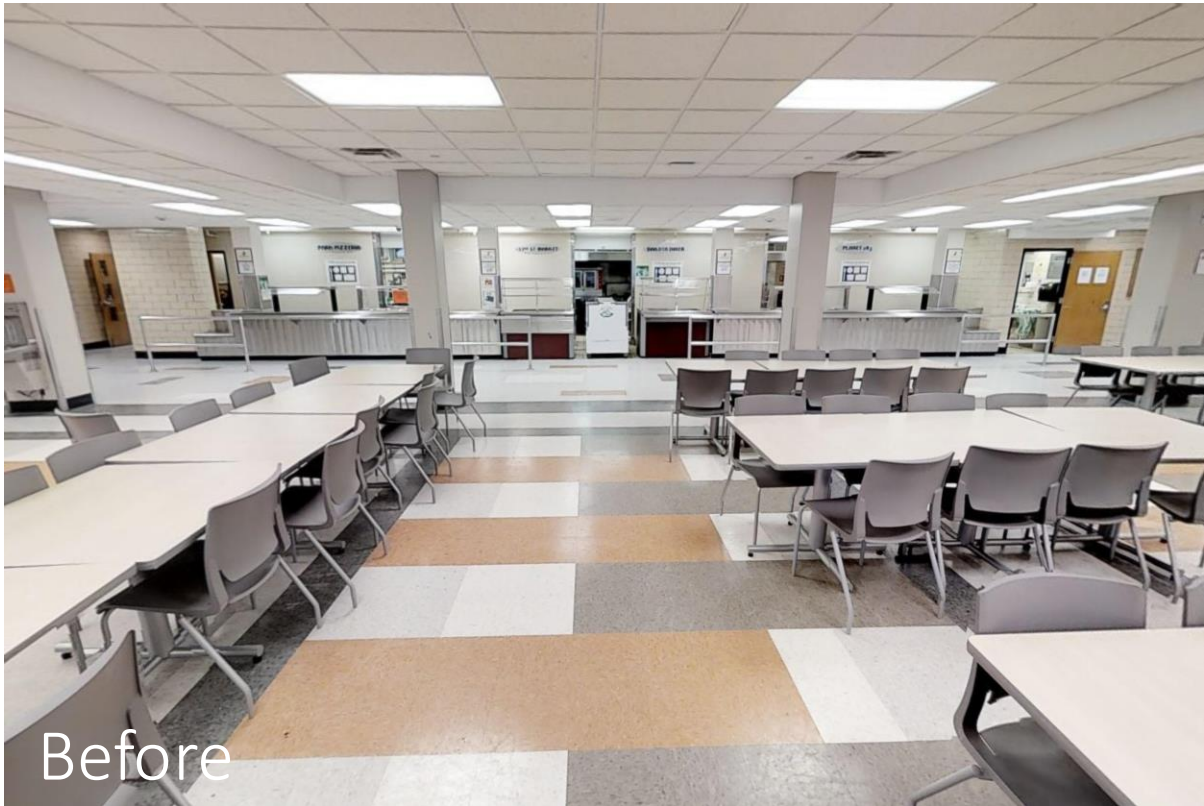


After

# SLP High School - Media Center Middle



# SLP High School - Cafeteria





SLP High School – Cafeteria Exterior



SLP High School – Cafeteria Kitchen



SLP High School – Storm Shelter



# SLP Public Schools High School Music Room Renovations

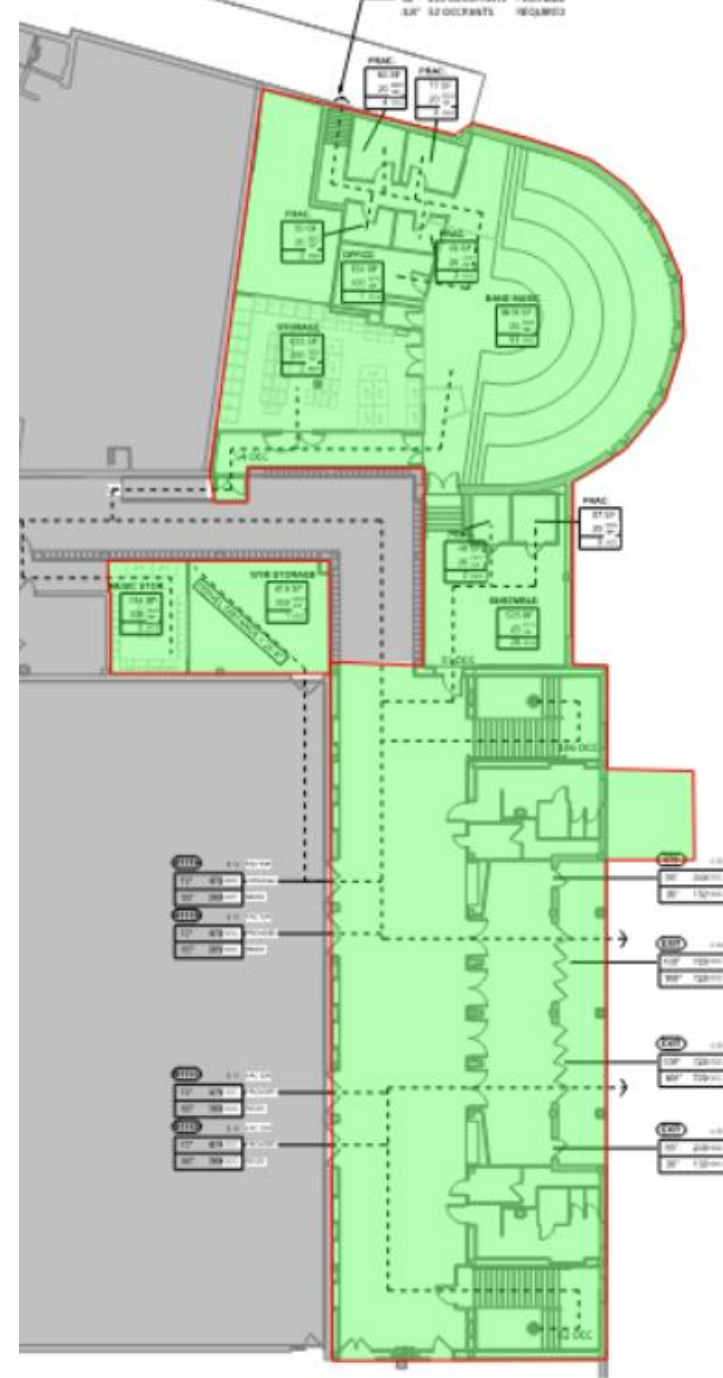
The High School Music Rooms Renovations projects consists of door replacements, new room finishes of floors, walls, ceiling and acoustical panels, replacement of three air handling units and two fan coil units, creation of a hydronic heating loop for the air handlers, electrical lighting upgrades and other electrical modifications.

Also added to scope are refresh renovations to the B150 & B174 main lobby and corridor. Including new wall tile, paint, ceiling tile, and lighting.

---



SLP Public  
Schools High  
School Music  
Room Renovations  
(Logistics)



# SLP Public Schools High School Music Room Renovations

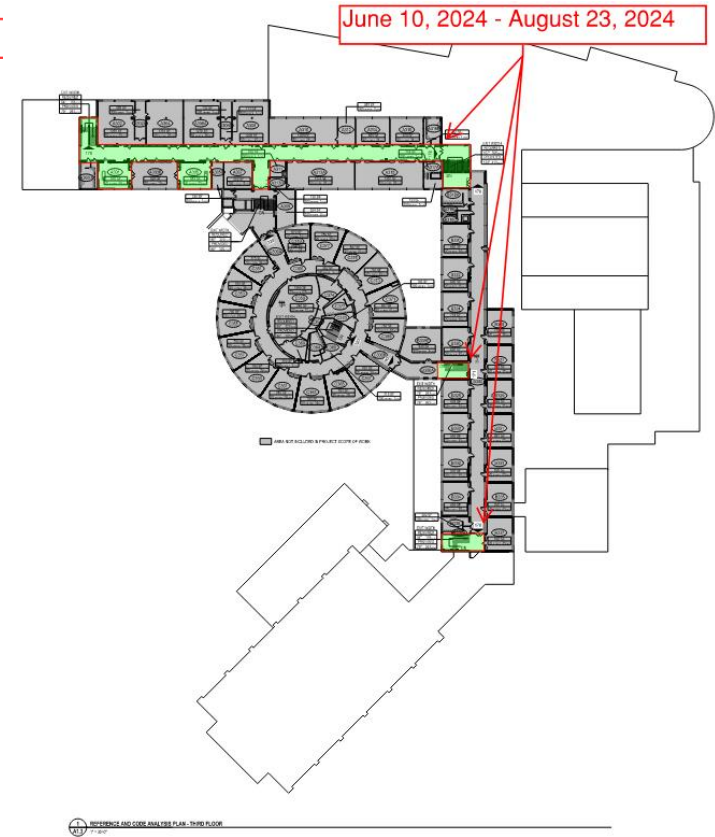
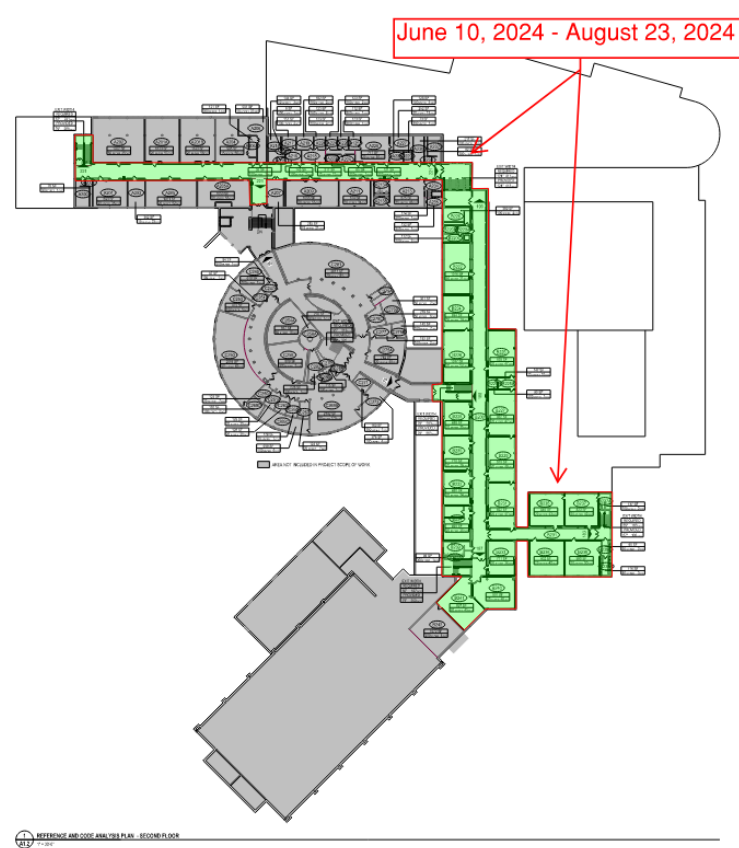
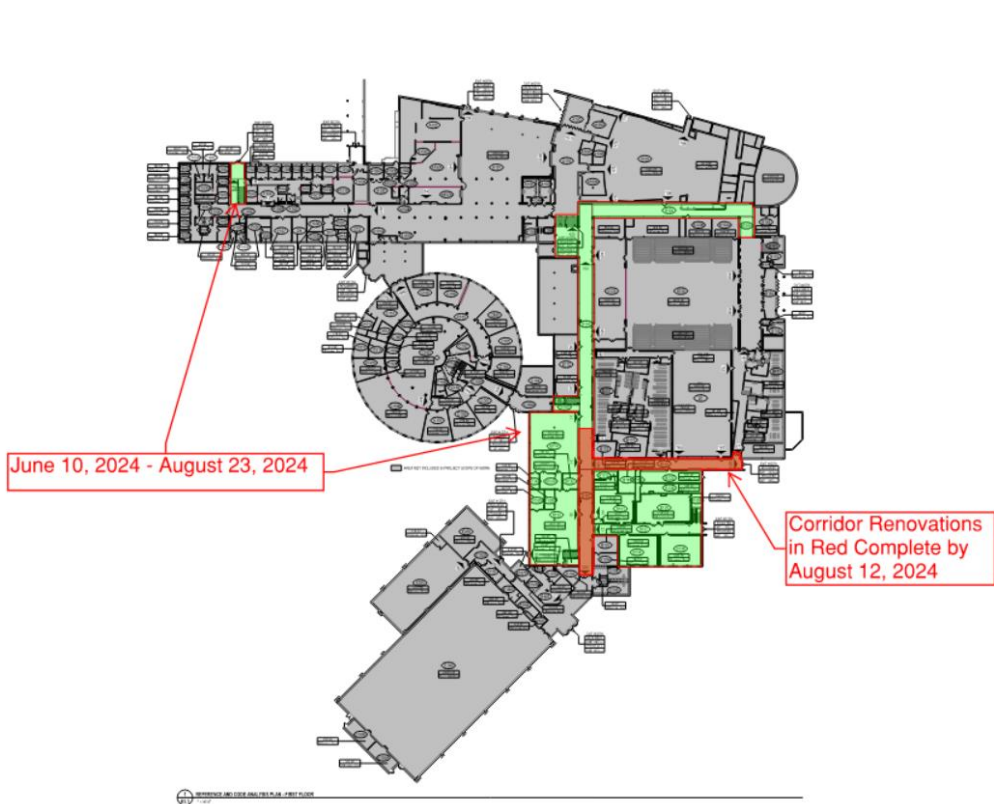


# SLP Public Schools High School Classroom Renovations Phase 2

The project consists of renovations of the existing High School. The scope includes a refresh of twenty-seven existing classrooms along with hallways, and stairwells stretching across three floors.

- Renovations similar to Phase 1 project in the 3rd floor B and C wings.
  - New wall finishes, carpet, ceiling tiles, lighting, markerboards, doors, and more in classrooms.
  - New tile, paint, ceiling tiles, lighting and more in the hallways and stairwells.
  - New classroom furniture will also be included.
-

# SLP Public Schools High School Classroom Renovations Phase 2 (Logistics)





SLP HS Classroom Renovations Phase 2



SLP HS Classroom Renovations Phase 2



SLP HS Classroom Renovations Phase 2



# SLP Public Schools Park Central Operations Center & Maintenance Building

The project consists of construction of a new two-story district Data Center adjacent to the existing Maintenance Building. The scope includes partial renovation of the Maintenance Building, consisting of upgrades to mechanical, plumbing, and electrical systems, tuckpointing and repairs of exterior masonry veneer, and replacement of most exterior doors. Sitework includes landscaping, concrete curb and sidewalks, and bituminous pavement. The Data Center will be a two-story building including a loading dock area, server/data room, new office areas, and working areas.

---



SLP Public Schools Park Central Operations Center



SLP Public Schools Park Central Operations Center & Playground

# SLP Public Schools Park Central Operations Center



# SLP Public Schools Central Community Center

The Central Community Center Gym and Pool Remodel project involves renovating the locker rooms & showers, upgrading pool systems to include a wheelchair lift, refurbishing the pool gutter and three gym areas, and converting existing space into a boardroom/training room. Additionally, the project includes replacing part of the built-up roof.

---



SLP Public Schools Central Community Center -  
Shower Remodel

Demo Phase



SLP Public Schools Central Community Center -  
Locker Room Remodel

Demo Phase



# SLP Public Schools Central Community Center - Parking Lot Reconstruction

Demo Phase



Questions?

