



Board Action Required

No Action Required

To: Coppell ISD Board of Trustees
From: Sid Grant
Date: September 8, 2015
cc: Dr. Mike Waldrip, Kelly Penny, Louis Macias, Gema Hall

Re: Sidewalk Easement Request for Lakeside Elementary

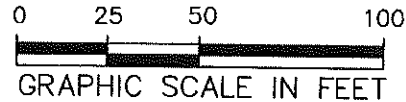
As part of the MacArthur “Hike and Bike Trail” project, the City of Coppell has asked us to approve amending the 15 foot utility easement on the west side of Lakeside Elementary (e.g. the east side of MacArthur Blvd) to include an eight (8) foot wide hike and bike trail. The existing fifteen (15) foot easement already includes a five (5) foot wide sidewalk running north the length of our property from Village Parkway. Therefore, the City will simply be replacing the five foot wide sidewalk that runs parallel to MacArthur with an eight (8) foot wide sidewalk.

I have attached two exhibits detailing the location of the sidewalk replacement.

Recommendation: That the Coppell ISD Board of Trustees approve conveying to the City of Coppell, a sidewalk easement to be contained within the existing 15 foot utility easement along the west side of Lakeside Elementary, and authorize Sid Grant, Assistant Superintendent for Business and Support Services, to execute the necessary documents.

MATCHLINE (SEE PAGE 2)

EXHIBIT 'B'



MACARTHUR BOULEVARD

(100' WIDE RIGHT-OF-WAY)

N 03°38'15" W 354.94'
S 03°18'19" E 346.98'

5' UTILITY EASEMENT
(VOL. 92053, PG. 2826)

CITY OF COPPELL
15' UNDERGROUND
UTILITY EASEMENT
(VOL. 85233, PG. 3248)

LOT 1, BLOCK A
KIMBEL ADDITION
(VOL. 92053, PG. 2826)

COPPELL ISD
(VOL. 91180, PG. 3576)

SIDEWALK EASEMENT
3,150 SF
(0.072 ACRES)

LAKES OF COPPELL OWNERS
ASSOCIATION, INC.
WALL AND LANDSCAPE EASEMENT
(VOL. 85233, PG. 3321)

POINT OF BEGINNING

S 48°08'43" E
11.13'

10' UTILITY EASEMENT
(VOL. 92053, PG. 2826)

"+" CUT IN CONCRETE
FOUND (C.M.)

S 86°40'56" W
11.43'

VILLAGE PARKWAY

(50' WIDE RIGHT-OF-WAY)

NOTES:

1. A metes and bounds description of even survey date herewith accompanies this plat of survey.
2. Bearing system for this survey is based on the City of Coppell's published control network and the Texas State Plane Coordinate System - NAD 83(2011), North Central Zone 4202, based on observations at CP09, CP12, CP20 made on November 17th, 2014 with an applied combined scale factor of 1.000136506.

LEGEND	
---	PROPERTY LINE
- - -	EASEMENT LINE
○	POINT FOR CORNER (UNLESS OTHERWISE NOTED)
(C.M.)	- CONTROLLING MONUMENT

Pacheco Koch

6100 WESTERN PLACE, SUITE 1001
FORT WORTH, TX 76107 817.412.7155
TX REG. ENGINEERING FIRM F-14439
TX REG. SURVEYING FIRM LS-10193824

SIDEWALK EASEMENT

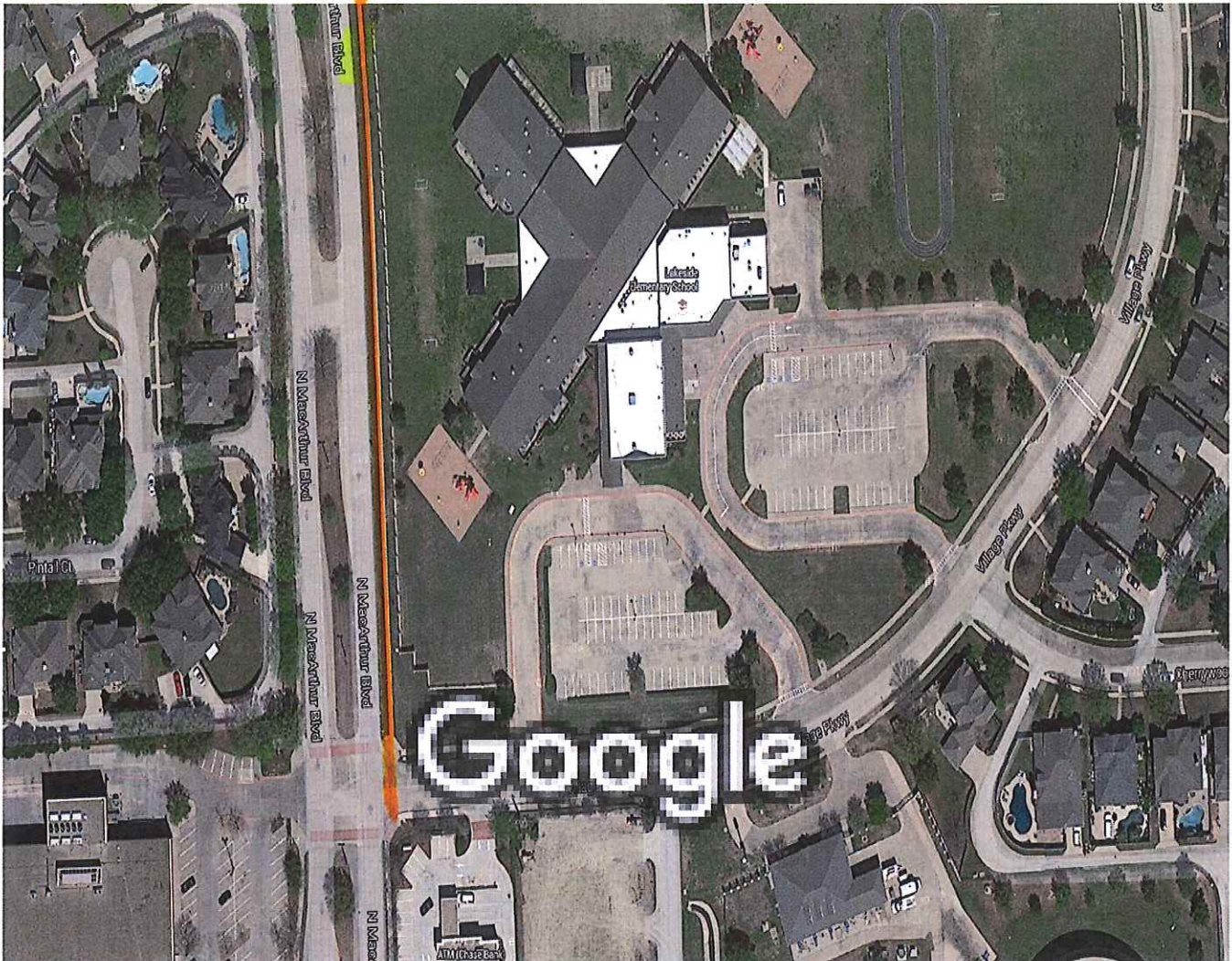
PART OF LOT 1, BLOCK A, KIMBEL ADDITION
B.B.B. & C. R.R. CO. SURVEY,
ABSTRACT NO. 199
CITY OF COPPELL, DALLAS COUNTY, TEXAS
PAGE 1 OF 2

DRAWN BY	CHECKED BY	SCALE	DATE	JOB NUMBER
MCB	MCB/PMD	1"=50'	AUG 2015	3642-14.426

Google Maps

Go
Ma

EXISTING 5' WIDE
SIDEWALK TO BE
REPLACED WITH 8'
SIDEWALK



Imagery ©2015 50 ft
DigitalGlobe,