

Microsoft® Live@edu



...the future of student collaboration is here!

Welcome to Windows Live

Email. IM. Blog. And more.

Windows Live™ makes it easy to keep up with all your favorite people - all in one place.

Check it out 



Welcome back!

[Sign in to Windows Live](#)

If you have a Hotmail, Messenger, or Xbo LIVE account, you already have a Windows Live ID.

New to Windows Live?

[Sign up](#)

Mail- Faster, easier, and more reliable than ever before.
[Go to Hotmail](#)

SkyDrive- Free, password-protected online storage.
[Go to SkyDrive](#)

People- Add people to your network and stay in touch more easily.
[Go to people](#)

Messenger- Stay in touch, instantly—simply chat, or share photos, play games, and more.
[Get Messenger](#)

Photos- Share your favorite shots with friends, and comment on their photos, too.
[Go to photos](#)

On your PC or mobile device- More for your PC or mobile device - Get free programs for your PC. Use Windows Live on your mobile device, too.
[Free downloads](#) | [More about mobile](#)

Microsoft *Live@edu* – what is it?

- Online platform that provides teachers and students with:
 - Communication
 - Collaboration
 - Creativity
- Accessible with any web browser 24/7/365



Live@edu will allow us to:

- Save Time and Money
- Give our students an email account
...to keep even after graduation!
- Build on what we already have



Live@edu will allow us to:

- Provide students with the applications they want and help them work together and with their teachers
- Help keep our students safe online
- Stay in touch with alumni



Live@edu Components

- Login location: www.windowlive.com
- Staff: [firstinitiallastname@dentonstaff.org](mailto:firstname.lastname@dentonstaff.org)
- Student: ?????@dentonstudent.org



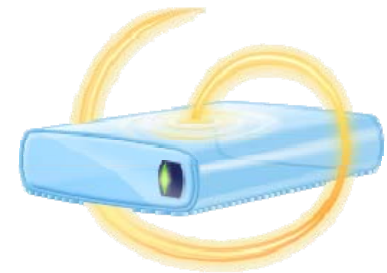
Office Live



Email



Calendar



SkyDrive

Office Live

- Basic features include:
 - Blogs
 - Photos
 - Lists
 - Friends
 - Profile
 - Guestbook
- Gadgets
- Contact Cards





Robert Bostic

Robert is in your network.

Robert's profile

Send a private message Post a note

Options H

Details

Photos

Photos of Robert

Space

Network

SkyDrive

What's new with Robert

Robert joined Carolyn Thomson's network

July 22

Robert joined Elizabeth Bostic's network | Add Elizabeth Bostic to your network

July 22

Robert joined Christine Jacobsen's network | Add Christine Jacobsen to your network

July 20

Robert added photos to Home page photos

July 10



Robert joined Ernie Stripling's network | Add Ernie Stripling to your network

July 6

Robert added photos to Robert 1



Network (7)

View me



Elizabeth



Michael



Christine



Carolyn



Traci



Ernie



Ernie

Suggest people

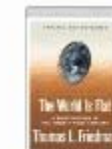
Favorite things



July 6



July 4



Wayman Tisdale
"Jazz Artist"



by Windows Live™



Ernie Stripling

CIO, Denton ISD in Denton, Texas

Ernie isn't in your network. Add Ernie

Ernie's profile

Details

Photos

Photos of Ernie

Space

Network

SkyDrive

Add to your network Send a private message Post a note

Options H

What's new with Ernie

Ernie joined Robert Bostic's network

July 6

Ernie added photos to Mike's horse training ranch

July 6



Ernie joined Michael Bernstein's network | Add Michael Bernstein to your network

July 1

Ernie added photos to March 2009

June 5

Ernie joined Chad Ingram's network | Add Chad Ingram to your network

May 15

Ernie changed occupation to CIO, Denton ISD

Apr. 8

Ernie changed location to Denton, Texas

Apr. 8

Notes

People in common (1)

View more



Robert

Network (3)

View more



Chad



Michael



Robert

Favorite things



Allison Krause ♥

Music | All

Office Live Workspace

- Storage and Collaboration service for Microsoft Office documents and most other common file types
- Web-based
- Up to 5GB is stored on remote servers
- View, edit, share documents with password protection



My Workspaces ⌵

Documents

- HEALTH
 - Workspace 1
 - + New Workspace
- Shared With Me ⌵
- Documents
 - Math A1
 - A Day English 2nd
 - A Day English 1st

Deleted Items

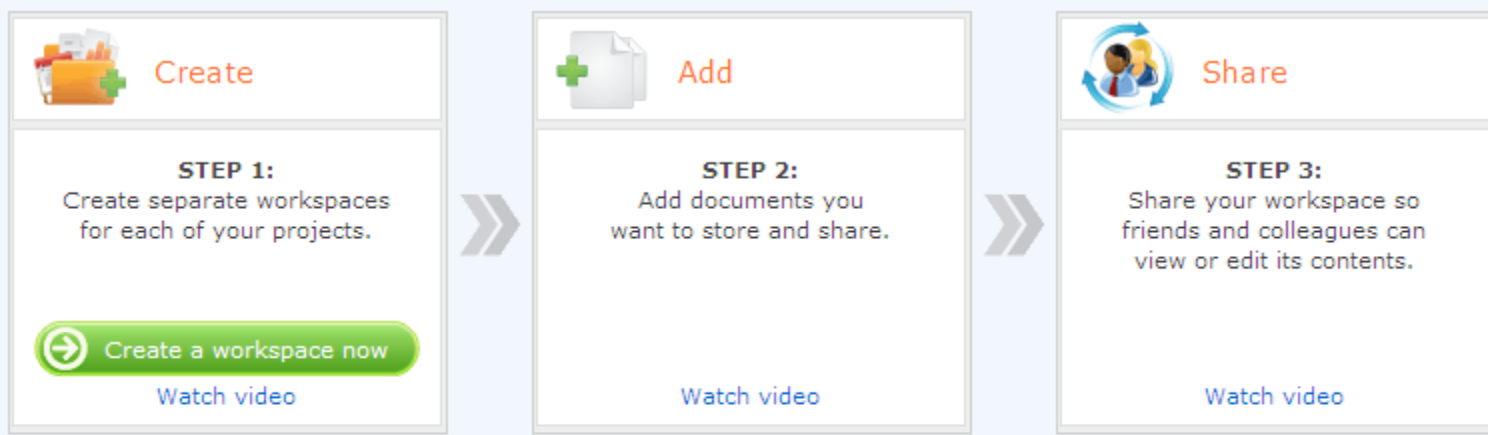
My Workspaces ▾

Documents

New ▾ Add Documents Delete Cut Copy Paste Install Office Live Update Share ▾

<input type="checkbox"/>		Name ↑		Modified	Modified by	Size (KB)
--------------------------	--	---------------------	--	----------	-------------	-----------

Getting started with Office Live Workspace
Use the Documents workspace to store your individual documents. To be more efficient, create workspaces for each project. Follow these easy steps:



See how to:

[Create a workspace](#)

My Workspaces

- Documents
- Community Project
- Carnival Fun!
- HEALTH
- Workspace 1
- + New Workspace


Shared With Me

- Documents
- Math A1**
- A Day English 2nd
- A Day English 1st

Deleted Items

Need help with Workspace?

Tap the wisdom of the [Workspace Community](#)



Shared with Me

Math A1

Share Comment Activity

Shared by leslie.taylor@live.dentonstudent.org. The workspace is shared with 1 person and you have editor access. [View sharing details.](#)

New Add Documents Delete

<input type="checkbox"/>	Name ↑	Modified	Modified by	Size (KB)
<input type="checkbox"/>	Class List with Conta...	May 27 12:11 PM		
<input type="checkbox"/>	Class Notes	May 27 12:14 PM	leslie.taylor@live.de...	1
<input type="checkbox"/>	Essay Outline	May 27 12:11 PM	leslie.taylor@live.de...	65
<input type="checkbox"/>	img001	May 27 12:19 PM	carolyn.thomson@liv...	4378
<input type="checkbox"/>	Important Dates	May 27 12:11 PM		
<input type="checkbox"/>	Syllabus	May 27 12:11 PM	leslie.taylor@live.de...	78

Expand | Close

- "img001" added by carolyn.t May 27 12:19 PM
- "Class Notes" changed by carolyn.thomson May 27 12:14 PM
- carolyn.thomson joined work May 27 12:14 PM
- "Math A1" shared with carolyn.thomson@live.denton May 27 12:12 PM
- "Math A1" created by leslie.t May 27 12:11 PM

Send me activity e-mails

Email

- User friendly
- Secure
- Lifetime account
- 10 GB of space for emails and attachments
- Includes a 25 GB online storage (SkyDrive)
- Calendar services
- Spell Check, Dictionary, Thesaurus, Search Tools
- Filtering and rules for organizing



Mail

Inbox (20 Items, 6 Unread)

Options Find Someone

Favorites

- Inbox (6)
- Unread Mail (6)
- Sent Items

Carolyn Thomson

- Inbox (6)
- Drafts
- Sent Items
- Notes
- Junk E-Mail
- Deleted Items (1)
- Search Folders

Contact List

Instant Messaging isn't available right now. The Contact List will appear when the service becomes available.

Mail

Calendar

Contacts

New		Filter
Search Inbox		
Arrange by: Conversation		Newest on top
▶	Configuring Your K-12 Domain: Settin...	
	Barbara Chung (DURTSCHI)	7/14/2009
	You've joined K-12 Live on Windows Live	
	Windows Live	7/7/2009
	Easily share notes, schedules, and more	
	Microsoft Office Live Workspace	6/27/2009
	Make the most of your Office Live Workspace	
	Microsoft Office Live Workspace	6/12/2009
	Icole@dentonstaff.org is inviting you to wor...	
	Linda Cole	5/27/2009
	Changes have been made to Math	
	Microsoft Office Live Workspace	5/27/2009
▶	leslie.taylor@live.dentonstudent.org i... (2)	
	leslie.taylor@live.dentonstudent.org	5/27/2009
	Quick tip #1: Creating project worksp...	
	Microsoft Office Live Workspace	5/27/2009
	Free 25GB Online Storage - Microsoft Live@...	
	Microsoft	4/10/2009
▶	leslie.taylor@live.dentonstudent.org invites...	
	leslie.taylor@live.dentonstudent.org	4/3/2009
▶	Folder for you from Leslie on Windows Live	
	Leslie	4/1/2009
	Photo album for you from Leslie on Window...	
	Leslie	3/30/2009
▶	test	
	Leslie Taylor; Carolyn Thomson	3/30/2009
	TEST Message - PM	
	Carolyn Thomson	2/27/2009



Back up your files today and avoid headaches tomorrow

Microsoft Office Live Wor... Actions
 Monday, July 27, 2009

To: Carolyn Thomson

Back up files for fr

To view this e-mail



Back up y
 Thank yo

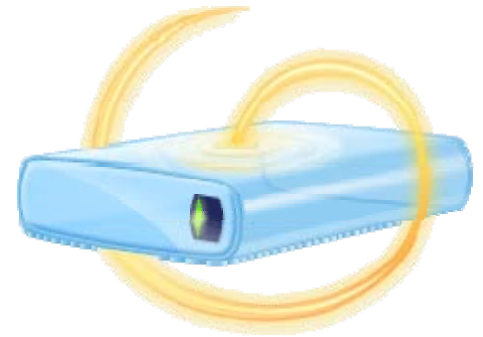
[SIGN IN](#)



1. Create a workspace for your arc
 Add folders to keep your files organiz

Skydrive

- Online storage service for uploading files to:
 - Use as personal vault
 - Aid with sharing and collaboration
- “Drag and Drop” content to folders:
 - Personal folders
 - Shared folders
 - Public folders
- **FREE** 25GB online storage
- Password protected



SkyDrive

Folders

Create folder Add files

Options ▾ H

All folders

Recent comments

Related places

Windows Live Photos

SkyDrive team blog

Your history

Barbara

Barbara

Ernie

Leslie

Michael

Microsoft Education-J...

Recent folders



Documents



Home page photos



Album 01



Favorites



Shared favorites

[View all](#)

What's new with your network



Leslie Taylor added **Test Document.docx** to Documents

Apr. 1

Leslie Taylor added photos to NECC

Apr. 1

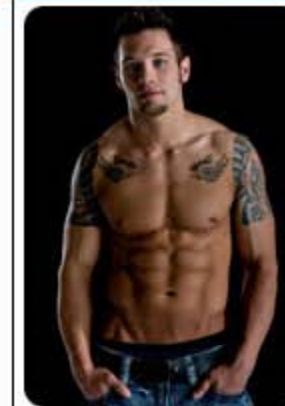


[More updates](#) | [Options](#)



24.99 GB available out of 25 GB

The #1 Rule To Building Muscle



Don't waste your money on protein powders or creatine. I found a FREE* way to get ripped without killing myself in the gym or starving

[Click here To read More](#)

*terms and S&H apply

Ryans300Workout.c



MSN Tech & Gadgets

Highlights

Tech on a budget

The 10 worst video game systems of all time

Downloads to boost your productivity

[More on MSN ...](#)



SkyDrive

Folders

Create folder Add files

Options ▾ H

All folders

Recent comments

Related places

Windows Live Photos

SkyDrive team blog

Your history

Barbara

Barbara

Ernie

Leslie

Michael

Microsoft Education-J...

Recent folders



Documents



Home page photos



Album 01



Favorites



Shared favorites

[View all](#)

What's new with your network



Leslie Taylor added Test Document.docx to Documents

Apr. 1

Leslie Taylor added photos to NECC

Apr. 1



[More updates](#) | [Options](#)



24.99 GB available out of 25 GB



MSN Tech & Gadgets Highlights

Tech on a budget

The 10 worst video game systems of all time

Downloads to boost your productivity

[More on MSN ...](#)



Online Calendars

- Teachers can plot appointments, schedule meetings, set reminders, let others know when they are available or busy
- Students can keep on track with classes, exams, project due dates, sports practice and more
- Sharing calendars keeps everyone updated on what family, friends and groups are doing



Calendar

New ▾ | Delete | Subscribe | Share ▾ |  Today | Next 4 weeks

Options ▾

Day | Week | **Month** | Agenda | To-do list

July 2009

S	M	T	W	T	F	S
28	29	30	1	2	3	4
5	6	7	8	9	10	11
12	13	14	15	16	17	18
19	20	21	22	23	24	25
26	27	28	29	30	31	1
2	3	4	5	6	7	8

Calendars

- Carolyn's calendar
- US Holidays
- K-12 Live

[Add a new calendar](#)


Related places

[Inbox](#)

[Contact list](#)



July 2009 Show more | S

Sunday	Monday	Tuesday	Wednesday	Thursday	Friday	Saturday
28	29	30	Jul 1	2	3	4 Independen
5	6	7	8	9	10	11
12	13	14 8am Schedule Pic	15 ★	16	17 10am Sr. Pictures	18
19	20	21	22	23	24	25
26	27	28 	29 8am Band Practic 5pm Orientation	30	31	Aug 1



Appointment: Scheduling Assistant

To...: parent01@email.com; parent02@email.com

Optional...:

Resources...:

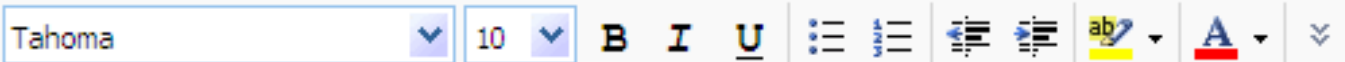
Subject: Carnival Volunteers

Location: Mrs. Thomson's Office Request a response to this invitation

Start time: Tue 9/8/2009 4:00 PM All day event

End time: Tue 9/8/2009 5:00 PM

Reminder: 15 minutes Show time as: Busy Private



Please join us for a planning meeting regarding the upcoming school carnival. We will discuss what we need to do to have a successful booth.

Thank you,
Mrs. Thomson

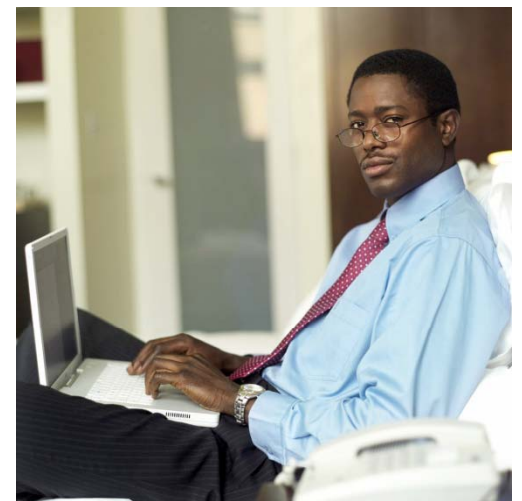
Value to the Student

- Learns to manage his/her time
- Learns to work collaboratively
- Enters the work force or college better prepared by using technology



Value to the Teacher

- Use the same tools as students
- Easy communications and scheduling: after-school meetings, sports practice, parent-teacher meetings
- Post class calendars for project due dates and exams
- Integration with Outlook client



Value to the Campus

- **FREE** messaging system
- **FREE** collaboration tool
 - Staff/staff collaboration
 - Staff/student collaboration
- Integration with Outlook client



Value to the Parent/Guardian

- Messaging services
 - Reminders / Notices
 - Field trip, picture money, student absences, assignment and exam dates, etc.
- No more crumpled papers from backpacks
- Easy access to child's schedule
- Feeling of engagement with child's education



Microsoft®

Live@edu

