

# PSTC Construction Update

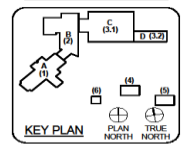
thru December 2017



<b>ARCHITECTURE</b>
PRK ARCHITECTURE 14001 Dallas Freeway, Suite 400 Dallas, TX 75244 972-235-1237 972-235-9734 TX Fax: 972-235-1238 PRK.com
<b>STRUCTURE</b>
AG&L Structural Engineering 12026 Rockwood Drive #10 Houston, TX 77060 714-633-2221
<b>MEP</b>
RMS Consulting Engineers 13001 North Central Expressway, Suite 1100 Dallas, TX 75243 972-462-4222
<b>CIVIL</b>
R&A Engineering 111 W. Main Street P.O. Box 10018 Dallas, TX 75208 972-366-1733
<b>TECHNOLOGY/SECURITY</b>
PRK 14001 Dallas Freeway, Suite 400 Dallas, TX 75244 972-235-1237
<b>LANDSCAPE ARCHITECTURE</b>
Scapes Outdoor 824 Esperanza Ave., Suite 5 Dallas, TX 75229 214-564-1100
<b>FOOD SERVICE</b>
CFP 2609 Villa Creek Dr., #333 Dallas, TX 75229 972-245-9331
<b>PILE ENGINEER</b>
CG Solutions Group, Inc. 110 Commerce Blvd. San Antonio, TX 78203 714-581-0073

**Collin College PSTC**

**COLLIN COLLEGE**

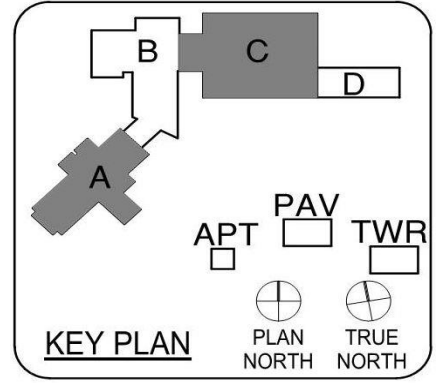
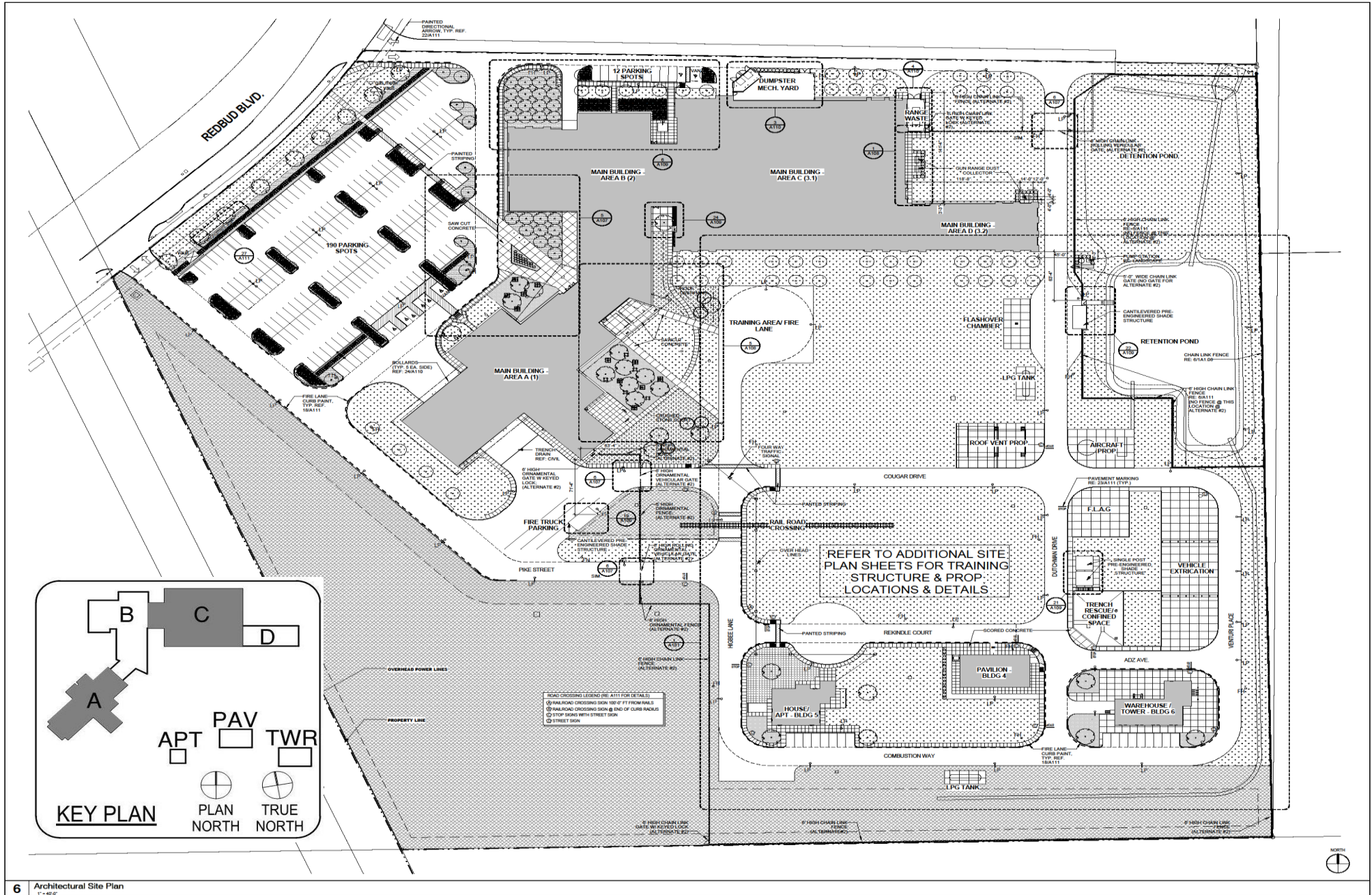


<b>CLIENT</b>	Collin College	
<b>PROJECT NUMBER</b>	15250	
<b>DATE</b>	10/03/2016	
<b>DRAWN BY</b>	T.C. BOYD	
<b>CHECKED BY</b>	JM	
<b>REVISIONS</b>		
No.	Description	Date

ISSUE FOR PROPOSAL

**ARCHITECTURAL SITE PLAN**

**A100**



# Current Activity

## General Notes:

- Job trailer relocated and 99% (no running water due to City utility work)
- Rain days to date (40) Most recent rain at site 12/22. Site labor was slowed by Holidays followed by (1) week of sub-freezing temperatures. Most impacted was roofing and masons.
- Overall project completion to date: 65% +/-
- City water utility completed across drive (N. const. gate entry) and concrete re-paved with drive open to traffic. Soil conditions were reported to and approved by GME prior to paving.
- **Bldg. A** Lightweight concrete roofing complete.
- Exterior framing complete.
- Interior trades work continuing.
- **Bldg. B** Brick veneer 65% +/-
- Sheetrock tape, bed & top-out 95%. Hanging ceiling grid wire and grid frame in progress.
- Interior trades work continuing.
- **Bldg. C** – exterior paint 80%
- CMU masons and fire sprinkler trades continuing.
- Mechanical yard slab framing and rebar in progress.
- **Bldg. D** – same as bldg. C
- **Trench Rescue** – Structural roof in progress.
- **Whse/Pavilion Bldg.** Standing seam roofing installed.
- **Apt. Bldg.** – Exterior masonry continuing. 3rd floor in progress.

## Current Activity:

- **Bldg. "A"** Interior wall studs in progress.
- Exterior sheathing completed and waterproofing in progress.
- Middle low roof tar paper in progress.
- Fire sprinkler, HVAC, electrical and plumbing in progress.
- **Bldg. "B"** exterior brick veneer in progress.
- "North" roof ready for standing seam install. (delayed by weather)
- Sheetrock walls, tape, bed and "top out" 95% +/-.
- Interior electrical panels and transformers install in progress.
- Interior HVAC main room in progress.
- Floor and wall tile delivered on site 12/19. (Install delayed by weather)
- All interior trade work continuing.
- **Bldg. "C"** bay 1 & 2 interior CMU walls and hollow metal frame install in progress.
- Fire sprinkler in progress.
- Electrical, plumbing and HVAC continuing.
- Exterior wall paint in progress.
- **Bldg. "D"** interior CMU walls and hollow metal frame install in progress.
- Fire sprinkler in progress.
- Electrical, plumbing and HVAC continuing.
- Exterior wall paint in progress.
- **Whse/Pavilion Bldg.** – Standing seam roof installed.
- **Apt. Bldg.** Exterior CMU walls in progress. 3<sup>rd</sup> floor in progress.
- **Tower Bldg.** 6<sup>th</sup> floor CMU walls in progress (platform not poured)
- **Trench Rescue** Structural steel roof in progress.

# Building Aerial



# Roof – Fire Academy



# Exterior Progress (West) – Lobby and Fire Academy



# Exterior Progress (East) – Lobby and Fire Academy



# Interior Progress (Apparatus Bay) – Fire Academy





# Interior Progress – Fire Academy



# Interior Progress – Police Academy



# Interior Progress – Police Academy



# Interior Progress – Police Academy



# Interior Progress – Main Electrical Room



# Interior Progress – Mechanical Room



# Interior Progress – Trench Rescue



# Exterior Progress – Pavilion





# Exterior Progress – Apartment



# Exterior Progress – Burn Tower

