



35EXPRESS PROJECT UPDATE FOR THE DENTON ISD



35EXPRESS PROJECT OVERVIEW

ABOUT THE 35EXPRESS PROJECT



DESIGN-BUILD TEAM



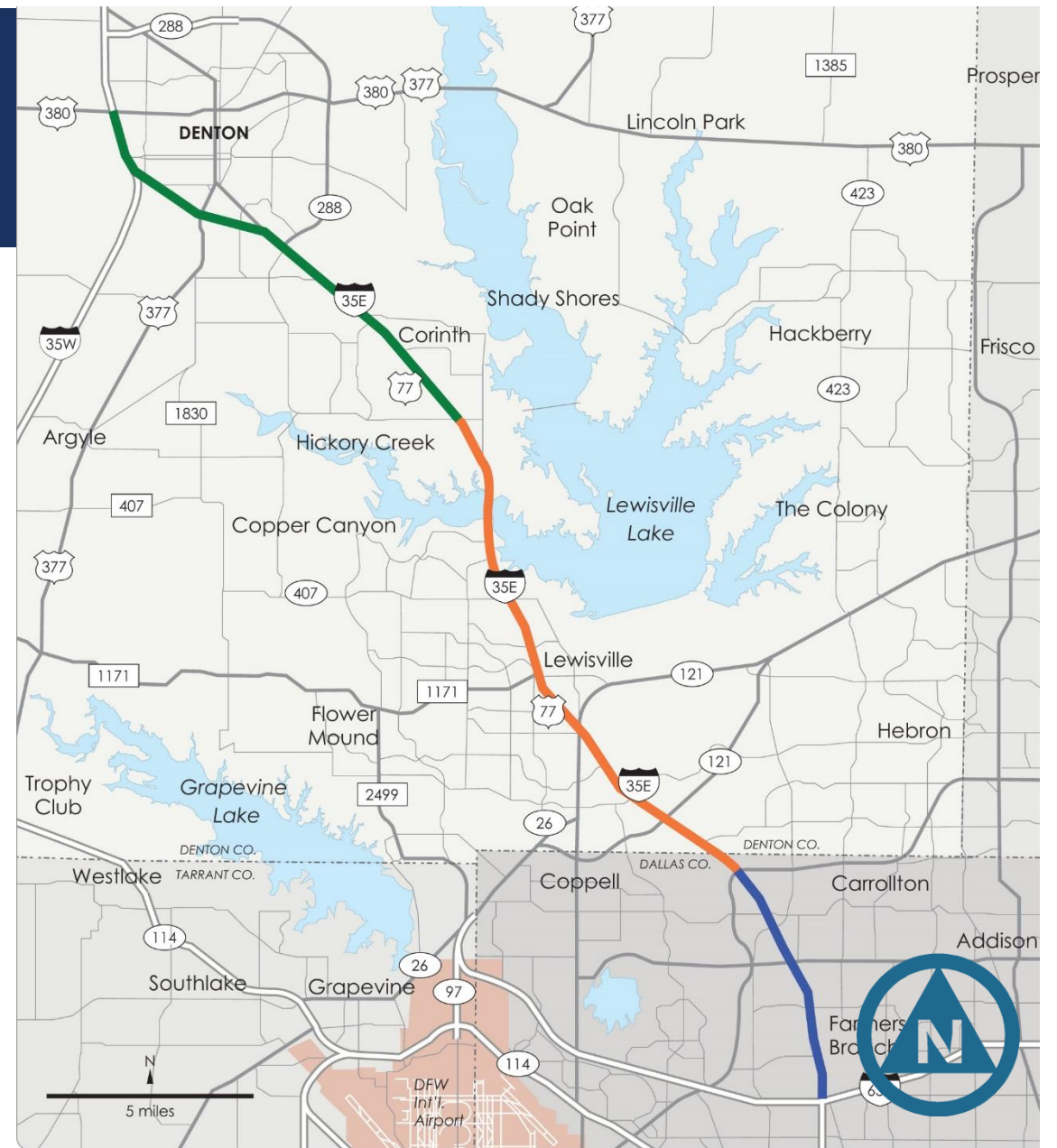
PROJECT PARTNERS

- Great partnerships make this project work
- Collaboration on a local, regional, state and federal level



PROJECT OVERVIEW

- Approximately 30-mile project
- US Highway 380 to I-635
- Ultimate construction cost: \$4.8 B
- Available funds: \$1.4 B (Phase I)
- Phase I began: Fall 2013
- AGL Constructors contracted to complete Phase I only.
- Estimated completion: Mid-2017



NORTH SEGMENT OVERVIEW

Improvements include:

- An additional general purpose lane.
- Completely rebuilding the North Texas Boulevard and Post Oak Drive bridges
- Converting three former bridges into underpasses: Corinth Parkway, Turbeville Road/Hundley Drive, Oak Drive/South Lake Dallas Drive
- Rehabilitation and widening of four bridges.
- New southbound Lewisville Lake bridge, includes bike and pedestrian lanes
- Lengthening and widening ramps at North Texas Boulevard, Loop 288, Mayhill, Post Oak, Corinth Parkway and Swisher Road
- Adding continuous frontage road lanes, particularly in the Lake Cities area



CONSTRUCTION OVERVIEW



NORTH TEXAS BOULEVARD BRIDGE

- The North Texas Boulevard bridge was demolished in April.
- Connectivity across the bridge — one lane in each direction and one turn lane — was restored in August.
- The North Texas Boulevard bridge will be substantially completed in November.
 - Two through lanes in each direction.
 - Two designated turn lanes in each direction.
 - A Texas U-turn lane on each end of the bridge.
 - A 15-foot-wide pedestrian walkway on the west side.



INTERSTATE 35E LONG TERM RAMP CLOSURES

- The southbound exit ramp to North Texas Boulevard and the northbound entrance ramp from North Texas Boulevard are temporarily closed to allow the reconstruction of the mainlanes.
- A wall must be built on both sides of the mainlanes to allow sufficient space for the roadway construction.
- These ramps will remain closed through spring 2017.
- After the new mainlanes are completed, this wall will be reconfigured to allow the permanent ramps to be constructed at this location.



INTERSTATE 35E PERMANENT RAMP CLOSURES

- The northbound exit ramp to North Texas Boulevard and the southbound entrance ramp from North Texas Boulevard will be lengthened and relocated several hundred feet south of their respective locations
- These ramp relocations required the permanent closure of two ramps south of North Texas Boulevard:
 - The northbound entrance ramp from McCormick Street is closed permanently. Traffic continues on the frontage road to the entrance ramp north of North Texas Boulevard.
 - The southbound exit ramp to McCormick Street is closed permanently. Traffic takes the US 377/Fort Worth Drive exit, make a U-turn and return to McCormick Drive on the northbound frontage road.



MCCORMICK STREET BRIDGE AND FRONTAGE ROADS

- The northbound exit ramp to McCormick Street is closed through December.
 - Drivers will exit to US 377/Fort Worth Drive exit and continue north on the frontage road to McCormick Street.
- Work on the expanded McCormick Street bridge is scheduled for completion in spring 2017.
- The north- and southbound frontage roads at McCormick Street are scheduled to be completed by the end of 2016.



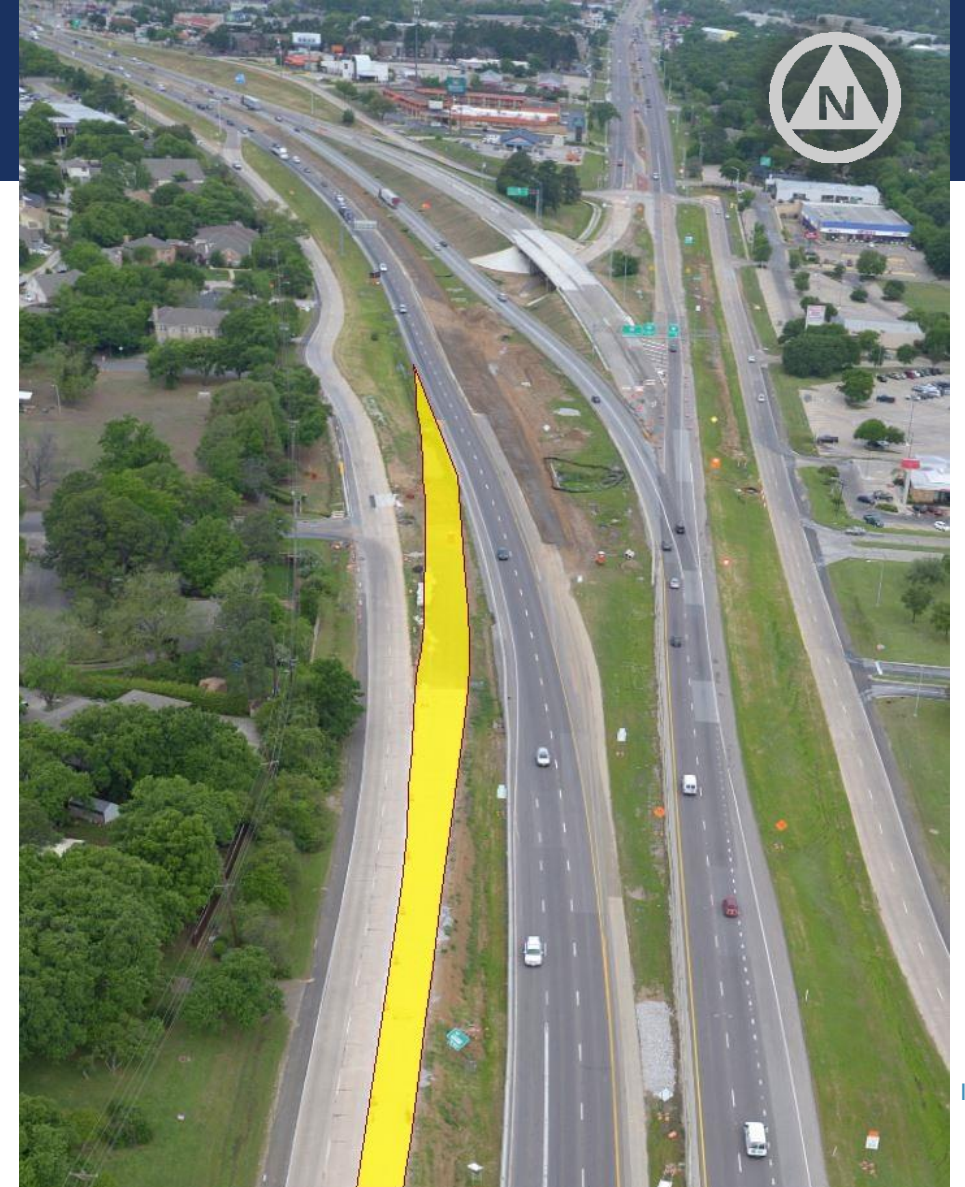
MAJOR DENTON COUNTY TRAFFIC CHANGES

- Traffic has been shifted onto the temporary southbound entrance ramp from Teasley Lane.
 - The exit ramp to Pennsylvania Drive will remain open to ensure entrance ramp traffic does not get boxed in by mainlane traffic.
 - The new southbound entrance ramp is scheduled to open in the fall and the exit ramp to Pennsylvania Drive will close permanently.
- The new southbound exit ramp to Loop 288 is scheduled to open at the end of the month.



MAJOR DENTON COUNTY TRAFFIC CHANGES

- The new southbound exit ramp to Loop 288 has opened.
- Work on the US 77 bridge is scheduled to be completed in October.
 - Northbound mainlane traffic will be returned to the US 77 bridge.
 - The southbound entrance ramp from US 77/Dallas Drive will be rebuilt and open later this fall.



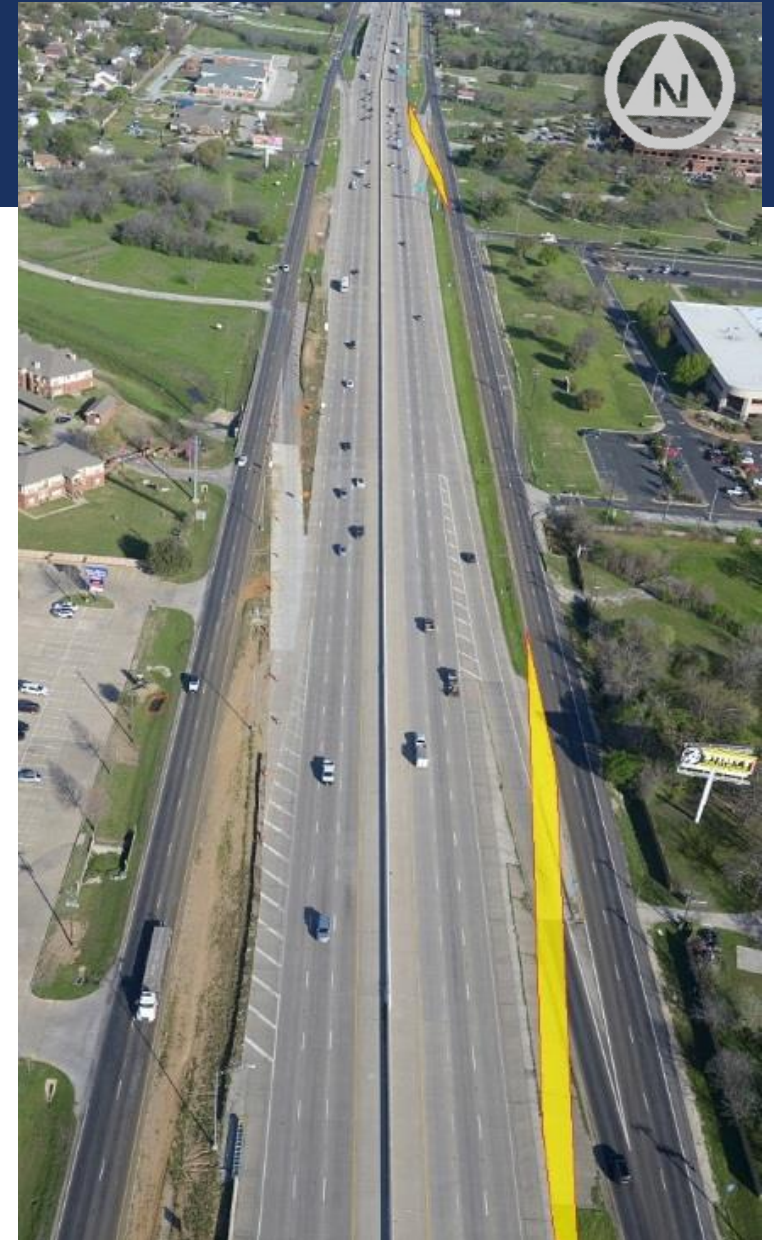
POST OAK DRIVE BRIDGE

- Connectivity across the Post Oak Drive bridge will be restored in late September with one lane in each direction.
- Work will continue on the bridge and the intersection through the fall.
- The bridge is slated for completion in Spring 2017.
 - The completed bridge will have two lanes in each direction and two dedicated turn lanes in each direction.



CORINTH AREA RAMPS

- The northbound entrance ramp near the U-turn in Corinth (former exit ramp 459) opens the week of Sept. 26.
- The northbound entrance ramp from Swisher Road will close immediately after and is expected to reopen as an exit ramp this fall.
- The southbound ramp to Turbeville Road is scheduled to open by the end of September.



TURBEVILLE/HUNDLEY ROAD

- Completion of the northbound I-35E mainlane and frontage road bridges over Turbeville Road/Hundley Drive is scheduled for spring 2017.
- Two additional traffic lanes will open on Turbeville Road/Hundley Drive in 2017.



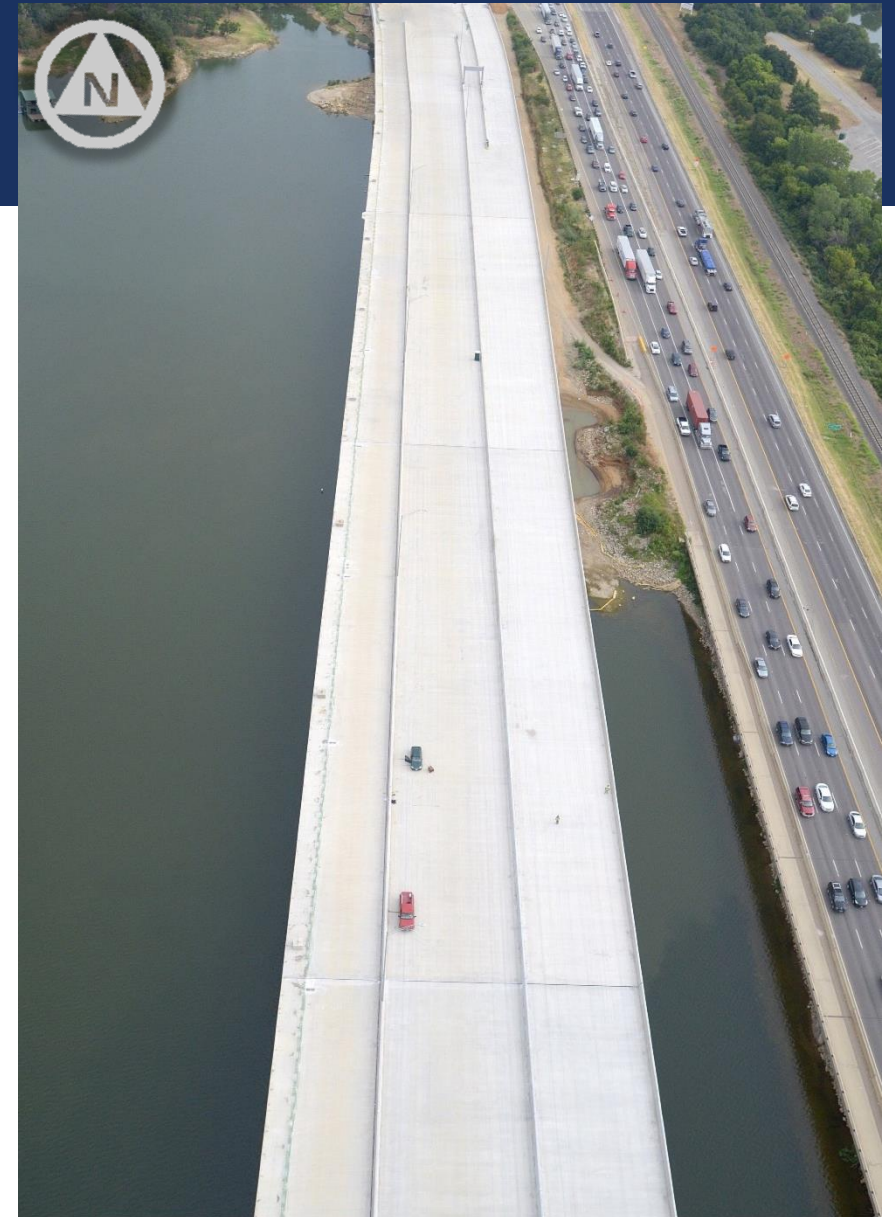
OAK DRIVE

- With north- and southbound I-35E traffic on the new bridge at Oak Drive, the remaining portion of the South Denton/Lake Dallas Drive bridge is scheduled to be demolished Sept 27.
- The southbound frontage road between Oak Drive and Hickory Creek Road will remain a two-way condition until the new Oak Drive intersection is completed in 2017.
- When complete, Oak Drive will be an at-grade roadway underneath I-35E, with one lane in each direction, a designated turn lane in each direction and a U-turn lane on both sides of the intersection.



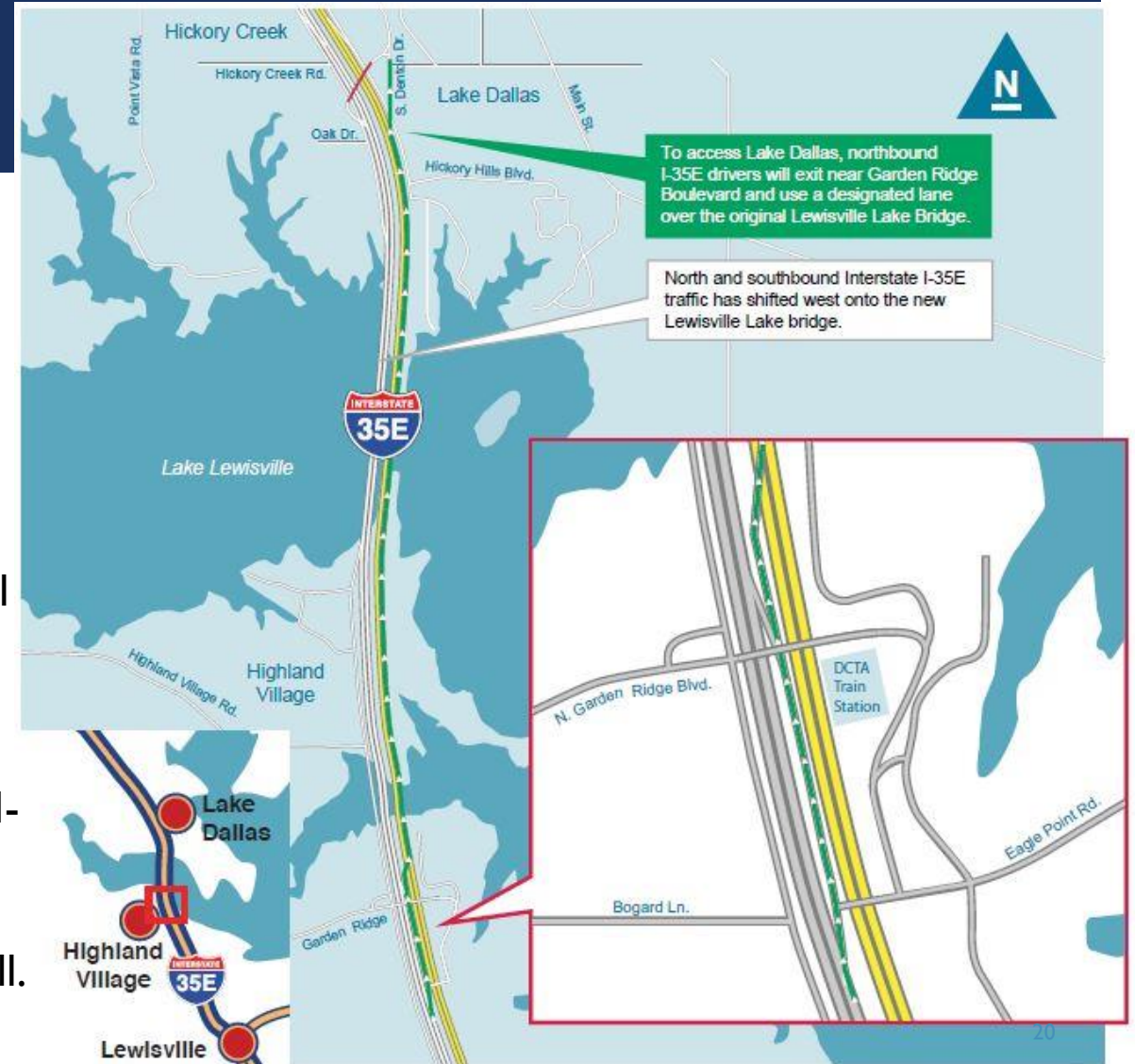
LEWISVILLE LAKE BRIDGE

- North- and southbound I-35E traffic has shifted onto the new southbound Lewisville Lake bridge.
- The southbound frontage road across the Lewisville Lake bridge will open by the end of 2016.
- When the project is completed, the original Lewisville Lake bridges will carry the northbound mainlanes and frontage road.
- The DCTA rail bridge will not be affected by the project.



GARDEN RIDGE BLVD/LAKE DALLAS EXIT

- With north- and southbound traffic on the new Lewisville Lake bridge, the exit to Lake Dallas and the Garden Ridge Boulevard exit are located south of FM 407.
- After taking the exit and crossing over FM 407 motorists will take the following routes:
 - Lake Dallas traffic will take the lane across the original bridge to reach Lake Dallas Drive.
 - Garden Ridge Boulevard traffic will take the exit to Eagle Point Road for access to and from northbound I-35E.
- The Garden Ridge Boulevard bridge will be opened this Fall.



SAFETY INITIATIVES

- AGL and TxDOT hold monthly meetings with law enforcement and first responders to identify ways to improve safety on the corridor.
- The speed limit between US 308 and Swisher Road has been reduced to 55 mph during construction.
- Speed boards, that show drivers how fast they are travelling, are placed at key points along the corridor.
- Barrel Monsters: Part of a national workplace safety initiative, Safety Week.
- AGL trucks have bumper stickers reminding drivers to drive the speed limit.
- #SafeDRIVE35 social media campaign designed to increase driver awareness.



REACHING OUT

REACHING OUT

- www.35Express.org
- eNewsletter
- Project hotline
 - 214-483-7777
- Project email address
info@35Express.org

Communication Tools



Facebook/I35Express



Twitter/35Express



SMS

Text Alerts

REACHING OUT



TWEETS 1,121
FOLLOWING 214
FOLLOWERS 2,382

35EXPRESS

@35EXPRESS

The 35Express project extends approximately 30 miles, through eight cities and two counties, from US 380 in

Tweets Tweets & replies P

35EXPRESS @35EXPRESS · 8h
Overnight Closures of Valley View
#DFWTraffic

About the 35Express

The 35Express project extends approximately 30 miles, through eight cities and two counties, from US 380 in Denton County to I-635 in Dallas County. The Design-Build project is expected to relieve traffic congestion in one of the most heavily traveled corridors in the North Texas region.

Getting Around on the 35Express

North Segment Middle Segment



35EXPRESS

Travel & Transportation · Add A Category

Contact Us Share

Timeline About Photos Reviews More



TRAFFIC ALERTS

Northbound Interstate 35E Frontage Road Between Garden Ridge Boulevard

Know Before



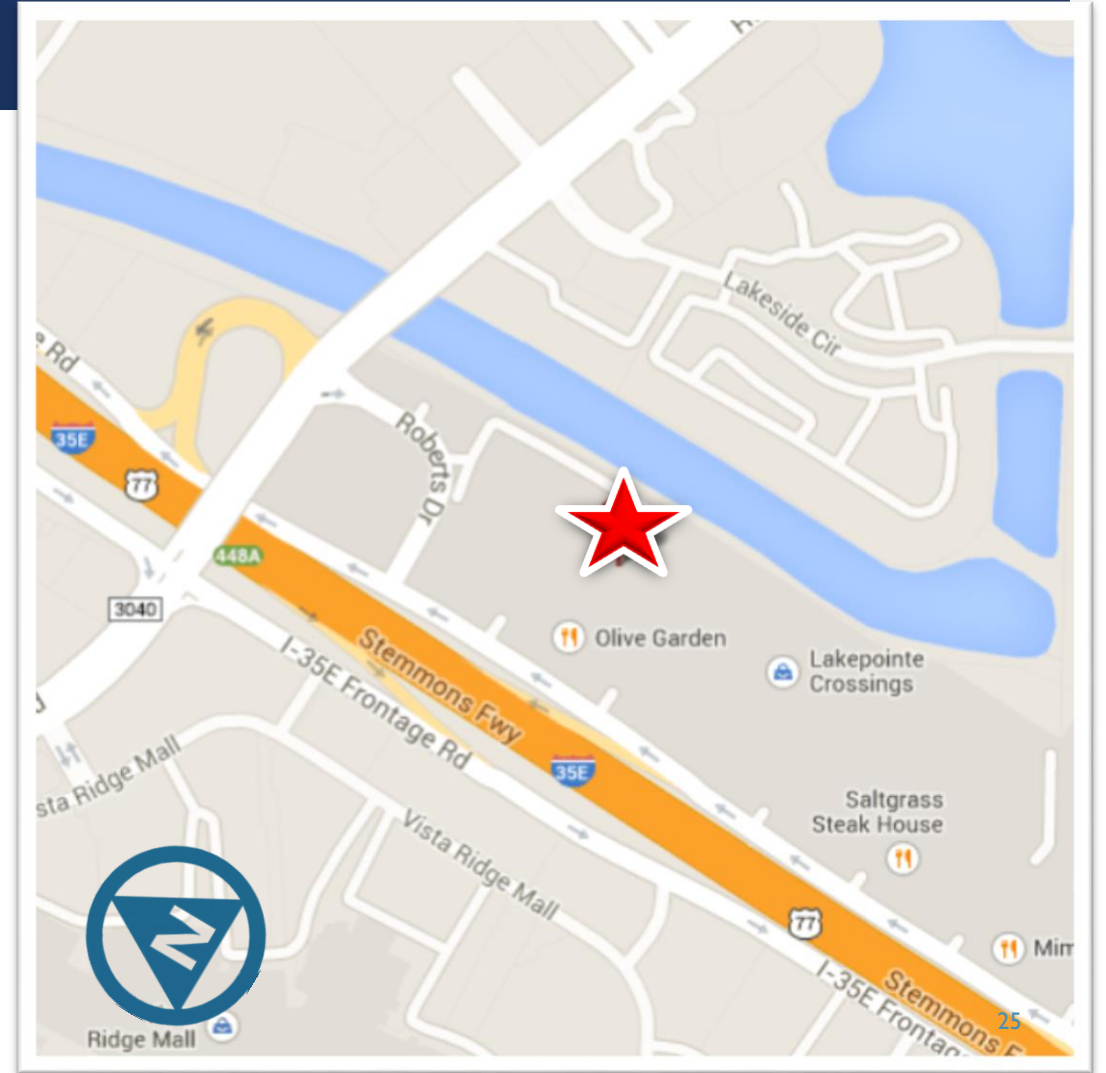
PEOPLE

Status Photo / Video Offer, Event +

★★★★☆

What have you been up to?

MAP OF PI OFFICE



Q&A

THANK YOU!

