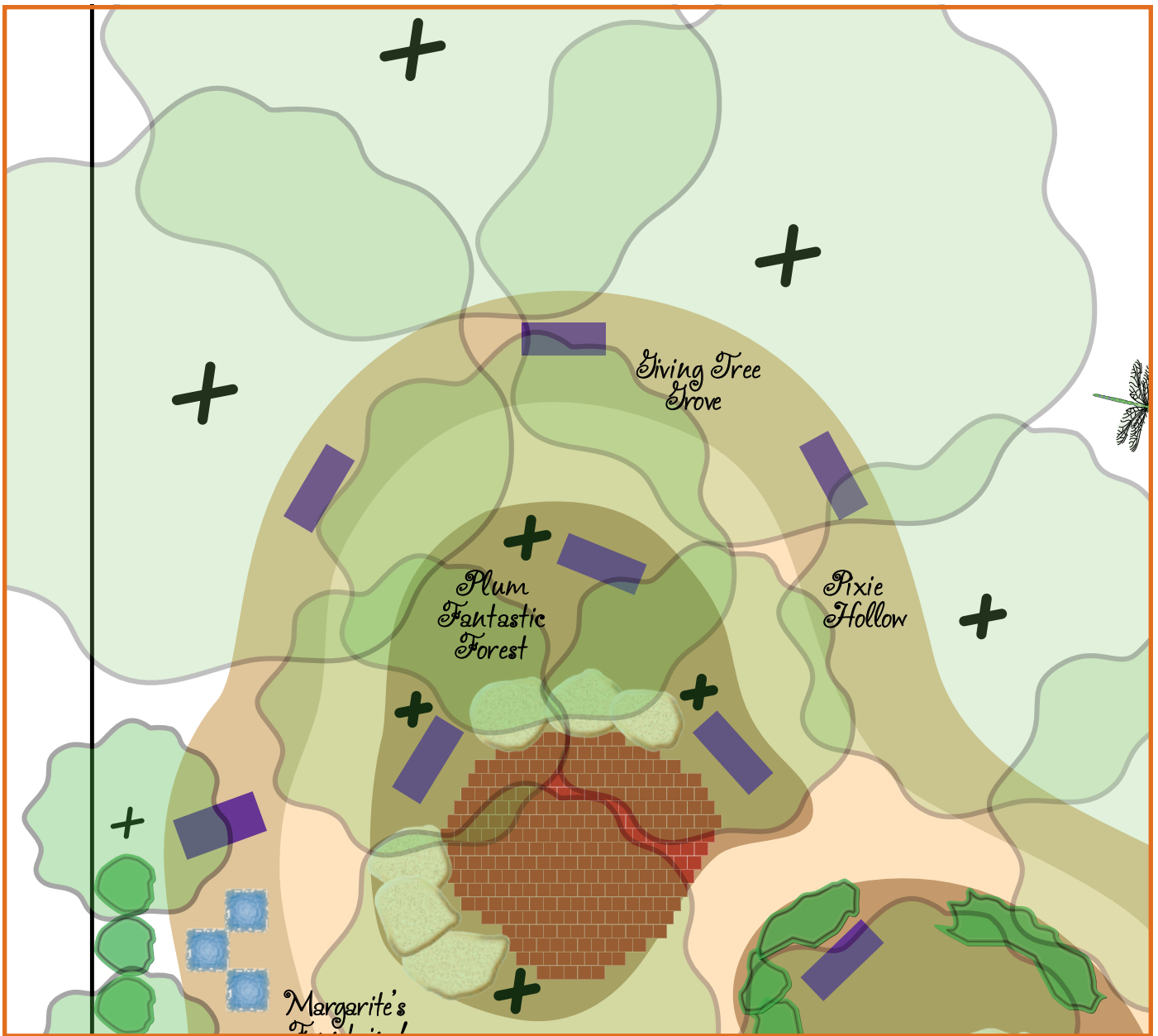




*It all
sprouts
from a
really
good plan.*



Open-Air Classroom with Shade Trees

The floor of the classroom will consist of 266 engraved bricks, surrounded by 3 Tulip Poplars, 2 Hawthorne's, 2 Texas Ash and 2 Texas Redbud trees. There will be 6 benches with gravel pathways.

Phase 1

Open-Air Classroom

Established Fall 2011

Area Size - 40'x40' (1,600 sq ft)

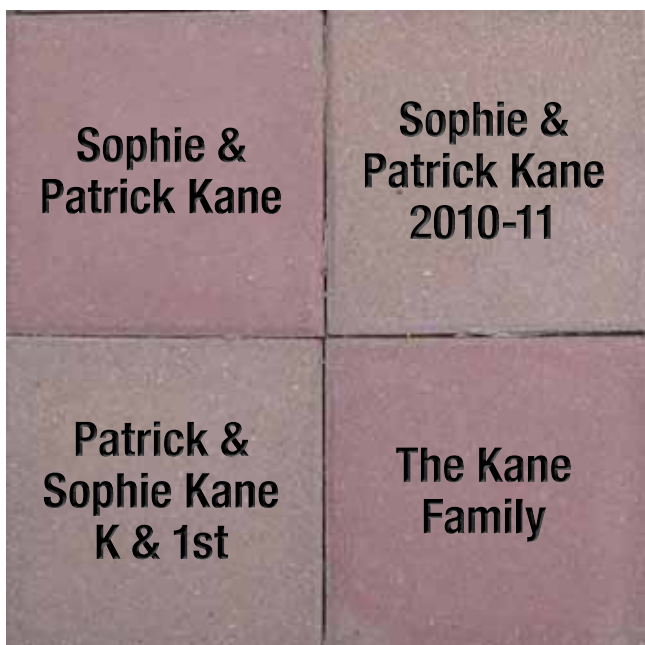
Total Budget – \$3,246

Plant Budget – \$1,288 • Apple Trees – \$365

Seating Budget – \$540 • Hardscape Budget – \$1,173



**If you can dream it,
we can engrave it!**



What is a good reason to choose an engraved brick program?

- **No upfront capital expenses.** You collect your money and then you pay for the engraved bricks. There are no minimum orders to meet.
- **Durable and long lasting.** Bricks become a permanent part of the landscape where donors can be reminded of their dedication to your project.
- **A living legacy** - expect your engraving program to increase year after year, giving financial benefit to your organization.
- **No need to think of a new fundraiser next year!**
Be ready to add on to your initial program. These bricks sell themselves once they are in place and in view of your potential buyers.

Bricks vary in sizes and styles

- **Clay Bricks** come in a variety of shades from ivory (light) to mulberry (very dark) in the standard brick size (4"x8"x2 1/4") and a larger size (8"x8"x2 1/4").
- **Concrete Bricks** also come in a variety of shades which can match or complement previous work and buildings. Sizes range from the standard (4"x8"x2 1/4") to very large (12"x12"x2 1/4").
- **Wire Cut Bricks** give a distinct surface look in varying shades of red in the standard size (4"x8"x2 1/4").

Engraved Brick Price List

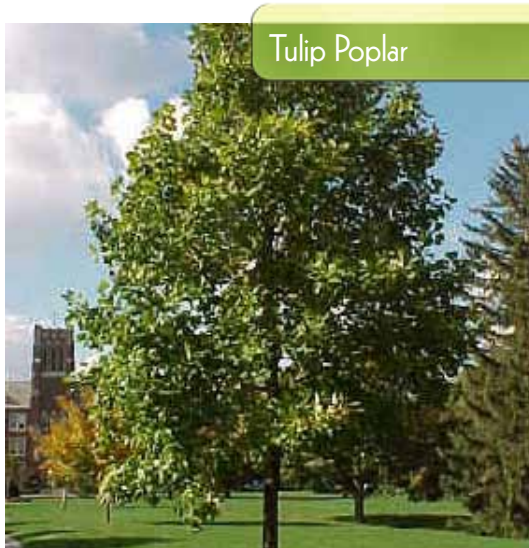
- **4"x8" Brick** with 1-2 lines of engraving \$12.00
additional line of engraving..... \$2.00
- **4"x8" Brick** students' signature \$12.00
- **8"x8" Brick** with 1-2 lines of engraving \$16.00
additional line of engraving..... \$2.00 each

Note: Brick prices include brick, engraving, paint and sealant

Profit Examples:

Sell 266 bricks (8"x8") x \$25 a brick	\$6,650
Less engraving cost 266 x \$16 a brick	\$4,256
School profit (\$9 profit per brick)	\$2,394
<hr/>	
Sell 532 bricks (4"x8") x \$20 a brick	\$10,640
Less engraving cost 532 x \$12 a brick	\$6,384
School profit (\$8 profit per brick)	\$4,256

Plant List



Tulip Poplar

height - 60-90 ft

spread - 40 ft

qty - 3

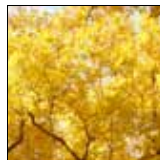
colors - flowers have greenish-yellow with orange markings – flowers & seeds provide food for finches, cardinals, quail, mice, squirrels, hummingbirds and rabbits

A fast growing shade tree that can grow 15' to 20' over a 6 to 8 year period. It has great beauty and in fall its foliage is spectacular. The distinctive cup-shaped yellow flowers are 1.5" across and about 2 - 2.5" length and really do resemble tulips.

www.tytyga.com

10-12 feet tall (Fall Shipping)

(\$196.75 each) \$590.25



Hawthorn

height - 20-25 ft

spread - 5-25 ft

qty - 2

colors - foliage color orange to red Texas native, reliable fall color, showy & fragrant flower, seeds or fruit eaten by wildlife

They produce white blooms in clusters, in late spring to early summer. The flowers yield to red berries that persist throughout winter and are eaten by birds, such as cedar waxwings. Summer leaves are a shiny, dark green; fall foliage ranges from orange to red. They can live for over 400 years and have the capacity to flower twice a year depending on weather conditions.

www.forestfarm.com

5'-6' tree

(\$49 each) \$98.00



Texas Ash

height - 30-50 ft

spread - 20-30 ft

qty - 2

colors - fall pastel hues of yellow, orange, red, gold and purple to scarlett red

Texas ash grows natively in limestone soils of north Texas. It grows in very low rainfall areas and can handle steeply sloped and very thin soils but will adapt to normal landscape conditions throughout Texas. Texas Ash is a beautiful shade tree that is graceful in the summer but has rich fall color. Texas ash is very easy to grow in most soils unless over watered. It has very low water and fertilizer requirements but does need excellent drainage.

The Plant Shed

6'-7' tree

(\$200 each) \$400.00



Plant List

Texas Redbud



height - 15-20 ft

spread - 15-20 ft

qty - 2

colors - glossy green leaves, pink to magenta flowers, and brown seed pods provide year round interest

The abundant purple-pink Redbud flowers appear in April, just before the leaves, on irregular ornamental branches. The trunk branches low to give a shrub like appearance even on single trunk trees. The 'Forest Pansy' Redbud variety sold by TyTy has beautiful red leaves in May when planted in full sun. The leaves turn brilliant red and yellow in the Fall.

www.tytyga.com

7-9 feet tall (Fall Shipping)

(\$99.80 each) \$200.00



Optional Trees

Chinese Pistache



height - 30 ft

spread - 25 ft

qty - 1

colors - fine textured foliage, deep green, fall shades of orange, red & crimson

The Chinese Pistachio has extremely hard, durable wood which helps protect the tree from wind, ice and decay. They have a medium to fine textured foliage that remains an attractive deep green color during the growing season and a spectacular fall color in shades of orange, red and crimson. In the summer females produce panicles of red dish flowers that are followed by small green berries that turn red to reddish-purple in the fall, loved by birds.

Fannin Tree Farm - Frisco

4" trunk

\$625.00



Red Maple



height - 40-60 ft

spread - 40-60 ft

qty - 2

colors - tiny, red flowers against its smooth gray bark is a beautiful sight

The leaves of a red maple tree are shiny green on top and pale green beneath. The flowers are small and red, appearing in dense clusters from late March to early April. The flowers are followed by small red fruit appearing in early summer. Red maple trees also have reddish stems and twigs. It produces a sap that can be made into maple syrup, although the sap is not concentrated with sugar as much as that found in the Sugar Maple.

www.tytyga.com

7-9 feet tall (Fall Shipping)

(\$177.85 each) \$355.70



Hardscape List

Seating



Carolina Park Bench

Dimensions - 49"W x 19.25"D x 30"H

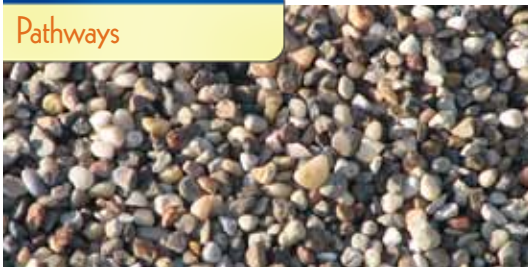
qty - 6

Decorate your outdoor living area with this attractive Carolina Park Bench. It is made from heavy-duty cast iron and hardwood slats. The frame is powder coated with a rust resistant Bronze finish. Weighs 57 lbs. It is easy to assemble and includes all necessary hardware

Home Depot

(\$89.98 ea) - \$540.00

Pathways



Decorative Stone Pea Pebbles 3/8"

qty - 1,034 sq ft

Dimensions - 16 cubic yards (4 inch depth)

Can be used for many landscaping applications, including around trees, shrubs, decks and driveways. The natural, small, river-washed stone will not fade, crack or blow away. Unlike wood mulches, it will not attract wood pests, such as termites and ants.

Stone Yard

\$734.00

Decomposed Granite

qty - 402 sq ft

Dimensions - 8.5 cubic yards (4 inch depth)

As granite rock decomposes over millions of years it becomes what is commonly known as decomposed granite gravel. It packs well yet lets water drain through. It is high in trace minerals and environmentally safe.

Stone Yard

\$439.00

Boulders



Moss Rock

qty - 6

Dimensions - 1 cubic foot = 110 lbs 2,000 lbs = 1 ton

example: $3' \times 3' \times 3' = 27 \text{ cu ft} = 2,970 \text{ lbs}$

$2,970 / 2000 = 1.5 \text{ tons} \times \$164 = \$243.50$

Moss can make some garden elements and even entire gardens look and feel aged and established. Moss grows naturally in patches, likes the North side of objects, and takes readily to cracks and crevices.

Stone Yard
Delivery 1-20 tons

\$164.00 per ton
\$140.00

Plant List



Jonafree

height - 8-10 ft

spread - 8-10 ft

qty - 3

info - sweet/tart, firm/crisp texture

ripening: - mid September

Vigorous trees bear heavy crops of Jonathan-like fruit with a bit less acid. Harvest mid-September. Bred to resist disease for easier care. Best pollinators: GoldRush or Enterprise. Semi-dwarf Supreme Trees® are our top-grade trees: large-trunked, straight, well-branched, 4-5 foot trees.

www.starkbros.com

Semi-dwarf Supreme Trees®

(\$31.99 each) \$95.97



Gold Rush

height - 12-15 ft

spread - 12-15 ft

qty - 3

info - sweet, crisp texture

ripening - mid October

Highly resistant to apple scab and powdery mildew. A crisp dessert apple with a tart tang that sweetens with age. Excellent fresh or in pies or crisps. Ripens mid-to-late October. Best pollinators: Jonafree, Enterprise or Red Fuji. Mature size 12-15 feet tall and wide; produces 100s of fruits. Shipped 3-4 feet tall and 3/8 inch or better trunk diameter.

www.starkbros.com

Semi-Dwarf

(\$25.99 each) \$77.97



Enterprise

height - 8-10 ft

spread - 8-10 ft

qty - 3

info - mildly tart, firm/crisp texture

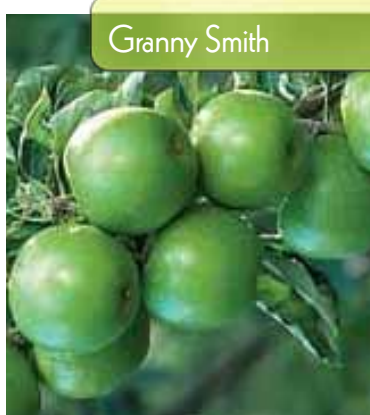
ripening - late October

Firm and crisp, spicy aroma and mild tartness. Extremely resistant to apple scab, cedar apple rust and fire blight; moderate resistance to powdery mildew. Ripens mid-October. Keeps 5-6 months if refrigerated. Best pollinators: Starkspur® Golden Delicious or Starkrimson® Gala. Semi-dwarf Supreme Trees® are our top-grade trees: large-trunked, straight, well-branched, 4-5 foot trees.

www.starkbros.com

Semi-dwarf Supreme Trees®

(\$31.99 each) \$95.97



Granny Smith

height - 8-10 ft

spread - 8-10 ft

qty - 3

info - tart, firm/crisp texture

ripening: - early November

Irresistible! A crisp bite and tart flavor. Keeps up to six months in the fridge. Best pollinators: Starkrimson® Red Delicious, Starkspur® Red Rome Beauty or Stark® Golden Delicious. Ripens early November. Semi-dwarf Supreme Trees® are our top-grade trees: large-trunked, straight, well-branched, 4-5 foot trees.

www.starkbros.com

Semi-dwarf Supreme Trees®

(\$31.99 each) \$95.97