



Understanding Your Proposal From Critical Response Group

Critical Response Group, Inc., proudly proposes a mapping solution born from lessons learned by US Special Operation Forces and successfully transitioned for use by critical infrastructure and domestic public safety professionals.

Collaborative Response Graphics® (CRGs®) are site-specific common operating pictures that enable better communication during an emergency. CRGs combine accurate floor plans, high resolution imagery, emergency response pre-planning, and a gridded-overlay into one map. Critical Response Group builds CRGs and distributes them to first responders for use in their pre-existing software applications and provides the necessary training to ensure full implementation.

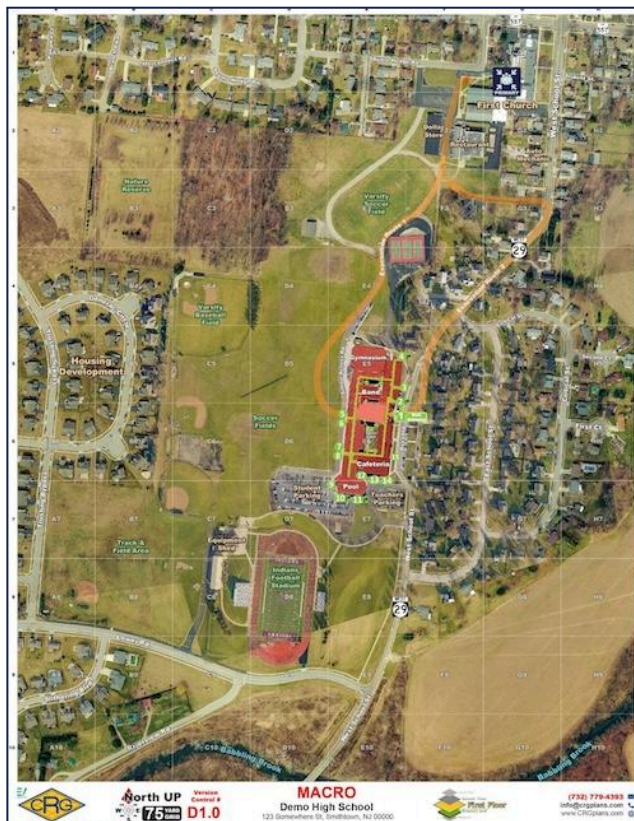
Your proposal contains two types of CRGs:

Micro CRGS



Each floor of a building receives a "Micro" CRG to coordinate response inside a building.

MACRO CRGS



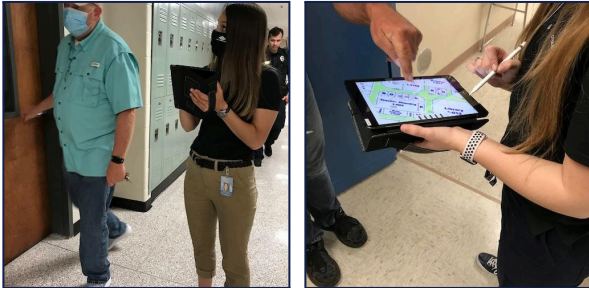
Each campus receives a "MACRO" CRG to coordinate response outside of a building

Micro CRGs come standard with labeling for **floor levels, facility nomenclature, doors/access points, main utility shut-offs, roof access points, Fire Alarm Control Panels, security key boxes, AEDs, and trauma kits**, and are used to coordinate emergency response inside a structure.

MACRO CRGs come standard with labeling for **buildings, parking lots, athletic fields, roadways, access points, and other key landmarks around the property**. MACRO CRGs are used to coordinate events exterior to the structure.

Your proposal also includes a site visit, implementation, and maintenance service that allows us to ensure that your CRGs are accurate and distributed to first responders relevant to your facility.

This program includes four key elements:



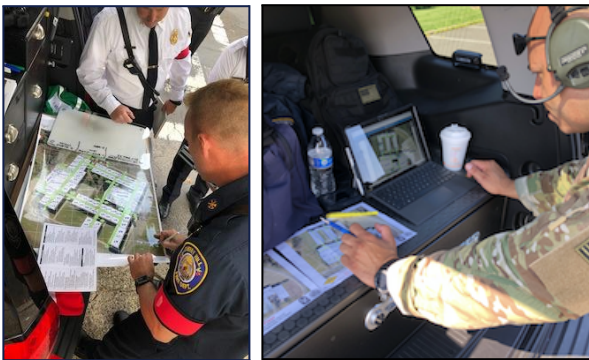
1. Site Visit, Updates, and Enhancements

We conduct an initial in-person site visit to ensure the accuracy of your CRGs. During map construction and throughout the first year, we will continue to update and redistribute maps following any site changes, whether those are moving room labels, relocating an AED, or conducting major structural renovations. Maps may also be periodically enhanced based on updated templates or standards.



2. Distribution to your 911 Communication Center

One of the most difficult challenges faced by 911 personnel is receiving emergency calls from locations inside unfamiliar, complex buildings, and needing to relay this information to first responders. Your maps are made accessible to your Emergency Communication Center so that when an emergency call is received from a mapped site, a 911 dispatcher will now be able to quickly reference location information using the CRG. We work with 911 answering points to support and maintain integrations that allow for geolocation of callers or other internal technology systems.



3. Implementation with Law Enforcement and Fire Service

Your building has multiple public safety departments that provide emergency services to your site. We distribute the maps to your law enforcement agency, fire service, and other specialized units like tactical teams. Each of these agencies may use a different technology platform, like a computer-aided dispatch (CAD) system, to access maps; we offer various file types to support integrations that make the CRGs of your building accessible on first responder systems. We also offer annual CRG training free of cost to these agencies.



4. Compatibility with Third Party Systems

If you have a video management system, a panic alert system, or any other technology platform that allows you to access map layers, we will work with you and that third party to offer mapping data that is viewable on that platform. We can also produce CRGs in formats that are usable for IT data management or other site-internal purposes.

The site visit, implementation, and maintenance process is provided in year one to facilitate construction of CRGs and initial distribution to all public safety agencies. It is available for renewal in successive years to ensure maps remain accurate and accessible in all systems.



Proposal from Critical Response Group

ORDER DATE: September 13, 2024

FROM: The Critical Response Group
200 American Metro Blvd. | #113
Hamilton Twp, NJ 08619

TO: Tim Furtaw II
Executive Director of Facilities
Saginaw Public School District
tfurtaw@spsd.net
Cell 989-714-5884

PRODUCT(s)	Micro Maps	MACRO Maps	TOTAL
SASA •1 MACRO Collaborative Response Graphic (CRG), •4 Micro CRG(s) with GeoRelevant Integrated Floor Plans*	4	1	\$6,125.00
Saginaw Middle •1 MACRO Collaborative Response Graphic (CRG), •4 Micro CRG(s) with GeoRelevant Integrated Floor Plans*	4	1	\$6,125.00
Saginaw United High School •1 MACRO Collaborative Response Graphic (CRG), •1 Micro CRG(s) with GeoRelevant Integrated Floor Plans*	1	1	\$2,450.00
SCC •1 MACRO Collaborative Response Graphic (CRG), •1 Micro CRG(s) with GeoRelevant Integrated Floor Plans*	1	1	\$2,450.00
Thompson •1 MACRO Collaborative Response Graphic (CRG), •3 Micro CRG(s) with GeoRelevant Integrated Floor Plans*	3	1	\$4,900.00
Zilwaukee •1 MACRO Collaborative Response Graphic (CRG), •2 Micro CRG(s) with GeoRelevant Integrated Floor Plans*	2	1	\$3,675.00
Arthur Eddy •1 MACRO Collaborative Response Graphic (CRG), •1 Micro CRG(s) with GeoRelevant Integrated Floor Plans*	1	1	\$2,450.00
Handley •1 MACRO Collaborative Response Graphic (CRG), •1 Micro CRG(s) with GeoRelevant Integrated Floor Plans*	1	1	\$2,450.00
Herig •1 MACRO Collaborative Response Graphic (CRG), •2 Micro CRG(s) with GeoRelevant Integrated Floor Plans*	2	1	\$3,675.00
Kempton •1 MACRO Collaborative Response Graphic (CRG), •1 Micro CRG(s) with GeoRelevant Integrated Floor Plans*	1	1	\$2,450.00

Loomis •1 MACRO Collaborative Response Graphic (CRG), •2 Micro CRG(s) with GeoRelevant Integrated Floor Plans*	2	1	\$3,675.00
Merrill Park •1 MACRO Collaborative Response Graphic (CRG), •3 Micro CRG(s) with GeoRelevant Integrated Floor Plans*	3	1	\$4,900.00
Chester Miller •1 MACRO Collaborative Response Graphic (CRG), •3 Micro CRG(s) with GeoRelevant Integrated Floor Plans*	3	1	\$4,900.00
Jesse Rouse •1 MACRO Collaborative Response Graphic (CRG), •2 Micro CRG(s) with GeoRelevant Integrated Floor Plans*	2	1	\$3,675.00
Stone •1 MACRO Collaborative Response Graphic (CRG), •2 Micro CRG(s) with GeoRelevant Integrated Floor Plans*	2	1	\$3,675.00
Professional Development •1 MACRO Collaborative Response Graphic (CRG), •2 Micro CRG(s) with GeoRelevant Integrated Floor Plans*	2	1	\$3,675.00
Henry Doerr/ECDD •1 MACRO Collaborative Response Graphic (CRG), •1 Micro CRG(s) with GeoRelevant Integrated Floor Plans*	1	1	\$2,450.00
Success Academy •1 MACRO Collaborative Response Graphic (CRG), •2 Micro CRG(s) with GeoRelevant Integrated Floor Plans*	2	1	\$3,675.00
Administration •1 MACRO Collaborative Response Graphic (CRG), •2 Micro CRG(s) with GeoRelevant Integrated Floor Plans*	2	1	\$3,675.00
Service Center 2 •1 MACRO Collaborative Response Graphic (CRG), •1 Micro CRG(s) with GeoRelevant Integrated Floor Plans*	1	1	\$2,450.00
Maint./Trans/Maint. II (Annex)/Grounds Storage •1 MACRO Collaborative Response Graphic (CRG), •1 Micro CRG(s) with GeoRelevant Integrated Floor Plans*	1	1	\$2,450.00
New Maint./Grounds Bldg. •1 MACRO Collaborative Response Graphic (CRG), •1 Micro CRG(s) with GeoRelevant Integrated Floor Plans*	1	1	\$2,450.00
Implementation and Maintenance	Sites	Cost Per	Total
<i>Annual Implementation and Maintenance Fee</i>	22	\$560.00	\$12,320.00
Grant Allocation Adjustment			-\$4,898.00
Total:			\$85,822.00

Payment Terms

50% deposit required to begin work	\$42,911.00
50% of project fee due upon delivery of Collaborative Response Graphics®	\$42,911.00

Terms and Conditions: Terms & Conditions Unless otherwise agreed in writing by Critical Response Group, Inc. and the customer, this Service Order and the services to be furnished pursuant to this Service Order are subject to the terms and conditions set forth here: <http://www.crgplans.com/terms-and-conditions>. The Effective Date (as defined in the terms and conditions) shall be the date set forth below.

*****Proposal valid for 60 days*****



Accepted and Agreed By:

Signature: _____

Printed Name: _____

Title: _____

Date: _____

The information and pricing contained in this proposal are strictly confidential. Signature above acknowledges that the parties stipulate to the Terms and Conditions set forth here:

<http://www.crgplans.com/terms-and-conditions> and that Critical Response Group, Inc. is to begin work.