

SHERIDAN BOARD WORK-SESSION

August 26, 2015

- ▶ Smarter Balanced Results
- ▶ Attendance/Graduation/On-Track
- ▶ Grades
- ▶ DIBELS Reading and Math
- ▶ Report Cards
- ▶ Board Goals

FOCUS ON DATA

Several white lines of varying lengths and slopes are positioned in the bottom right corner of the slide, creating a modern, abstract graphic element.

- ▶ Fewer students met the Smarter Balanced benchmark than the previous OAKS benchmark
- ▶ Statewide students did better than anticipated
- ▶ I would say our students did better than I anticipated as well
- ▶ We learned from this past year
- ▶ Parents can opt out

SMARTER BALANCED RESULTS

Preliminary Sheridan SBAC Results as of August 25, 2015

	2013-14	2014-15	2014-15	2013-14	2014-15	2014-15	2013-14
Grade	Reading	ELA/Literacy	Median Growth	Math	Math	Median Growth	Writing
3	45.30%	16.10%	NA	25.00%	34.40%	NA	NA
4	42.00%	22.20%	36.00%	29.00%	36.80%	67.00%	NA
5	42.20%	20.00%	23.50%	32.80%	18.30%	62.00%	NA
6	48.00%	22.80%	24.00%	44.00%	19.00%	68.50%	NA
7	43.50%	28.60%	29.00%	40.30%	14.00%	35.00%	NA
8	54.40%	32.70%	25.00%	38.20%	10.90%	30.00%	NA
11	84.30%	49.10%	30.00%	66.70%	14.30%	48.00%	49.00%

SHERIDAN SMARTER BALANCED
RESULTS

- ▶ New K-5 Reading Curriculum (National Geographic – Reach for Reading)
- ▶ Continue use of Engage New York math curriculum
- ▶ Focus on strong instructional practices
- ▶ School wide AVID
- ▶ Changing culture and raise expectations

PLANS TO IMPROVE

- ▶ Attendance is improved over the previous year
- ▶ Graduation rate is great for SHS
- ▶ Struggling students need support
- ▶ Freshman need support
- ▶ Over 90% of kindergarten students attended 90% of the time last year

ATTENDANCE/GRADUATION/ON-
TRACK

School	Grades	13-14 Att %	13-14 Students Absent 8+ Days	14-15 Attendance %	14-15 Students Absent 8+ Days	% Increase in Attendance	Decrease in Students absent 8+ Days
FCS	K Through 5	92.8	278	93.45	267	0.65	11
FCS	6 Through 8	92.85	118	92.23	119	-0.62	-1
SHS/SA	9 Through 12	87.14	209	92.98	162	5.84	47
District	K Through 12	91.17	605	93.04	548	1.87	57
FCS	Kindergarten	90.06	59	92.2	53	2.14	6

ATTENDANCE

Class of 2014				Class of 2013
4 Year Graduation Rate	# of Students	# on Track	Percentage	2013-14
SHS	38	36	94.74%	87.50%
Spartan Academy	25	4	16.00%	40.00%
Total	66	40	60.61%	
Class of 2013				Class of 2012
5 Year Completion Rate	# of Students	# on Track	Percentage	2013-14
SHS	54	50	92.59%	79.2
Spartan Academy	18	9	50.00%	37.5
Total	72	59	81.94%	

GRADUATION

2014-2015	# of Students	# on Track	Percentage	2013-2014
Freshmen On Track	63	42	66.67%	82.10%
6 or more credits earned				

FRESHMEN ON-TRACK

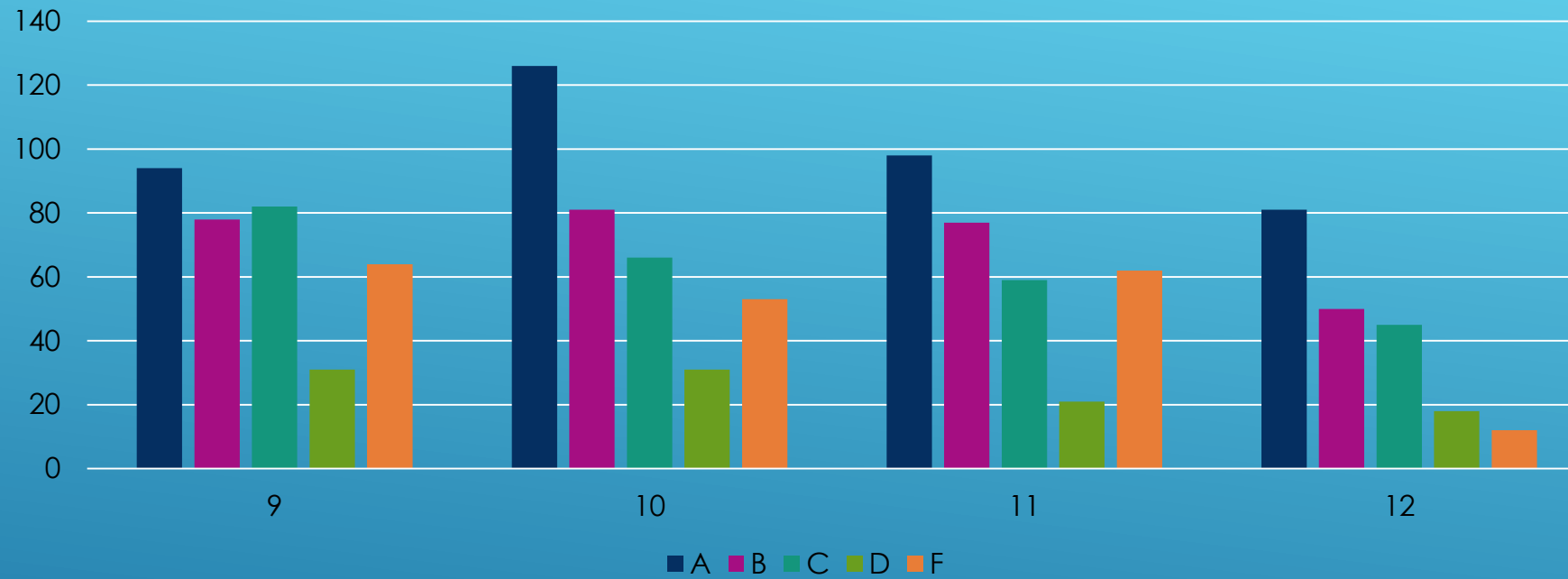
- ▶ Continue and improve attendance initiative
- ▶ Work to improve instruction in the classroom
- ▶ Change culture and raise expectations
- ▶ Counselor added to high school
- ▶ Examine transition from eighth grade to ninth grade

PLANS TO IMPROVE

- ▶ Grades are typical for a schools our size
- ▶ We use a traditional grading scale
- ▶ System is points based traditional system
- ▶ Some teachers give D's and some don't

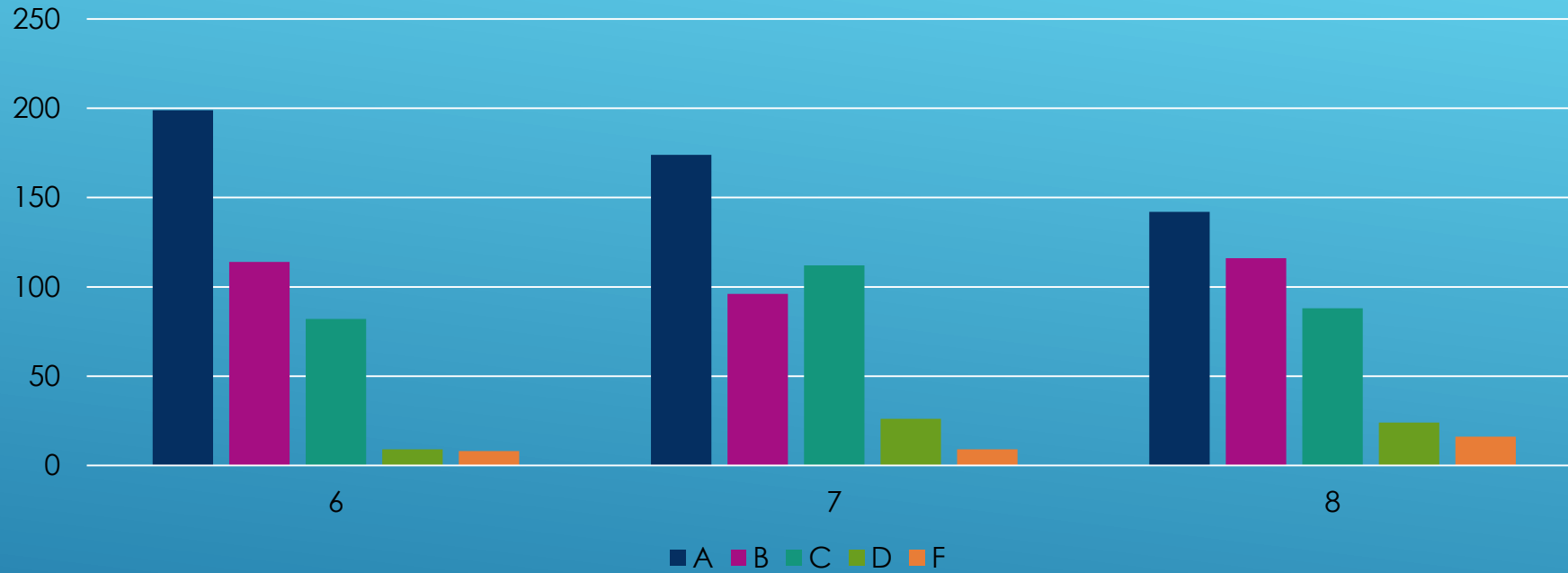
GRADES

2014-15 Tri 1 SHS mark Distribution by Grade



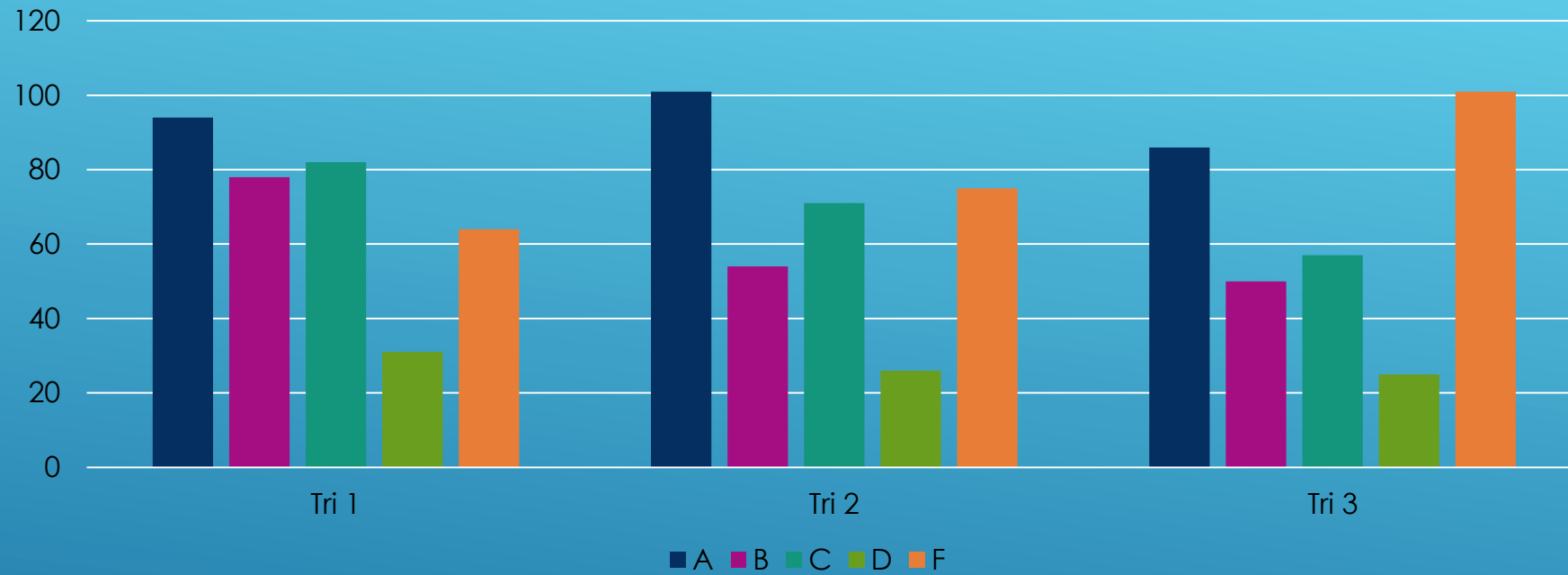
GRADES

2014-15 Tri 1 FCS Mark Distribution by Grade



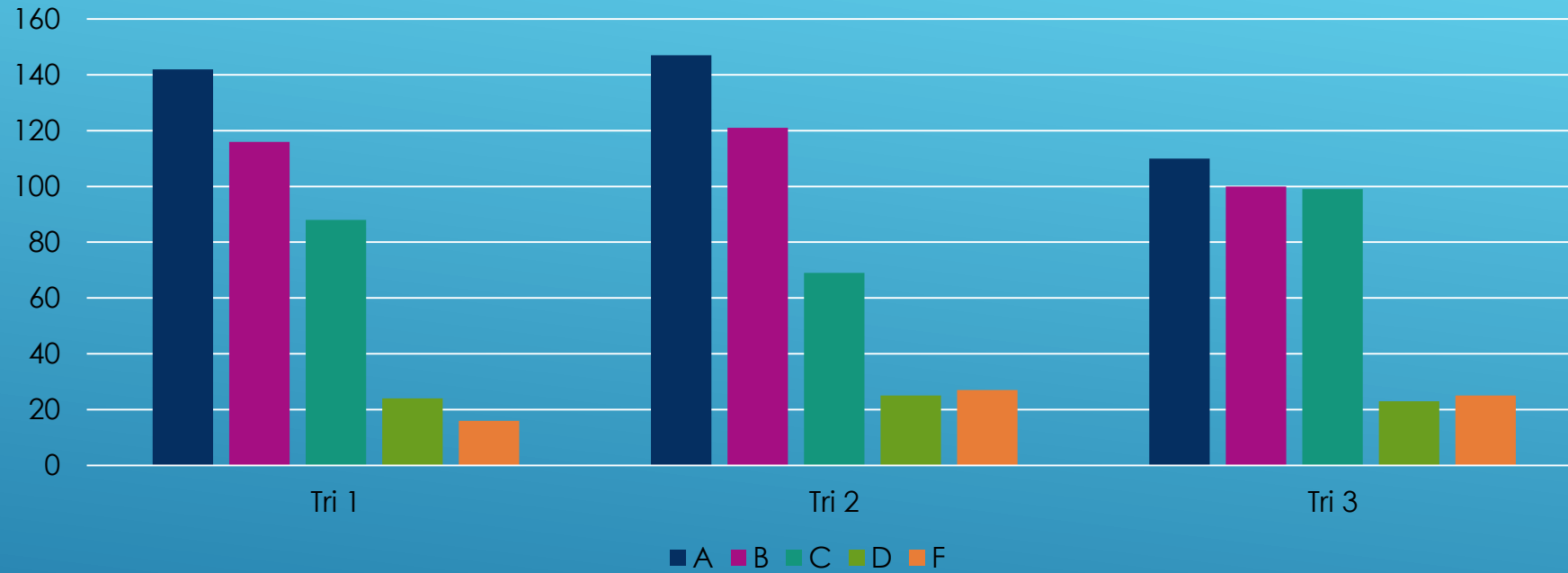
GRADES

2014-15 Freshman Marks



GRADES

2014-15 8th Grade Marks



GRADES

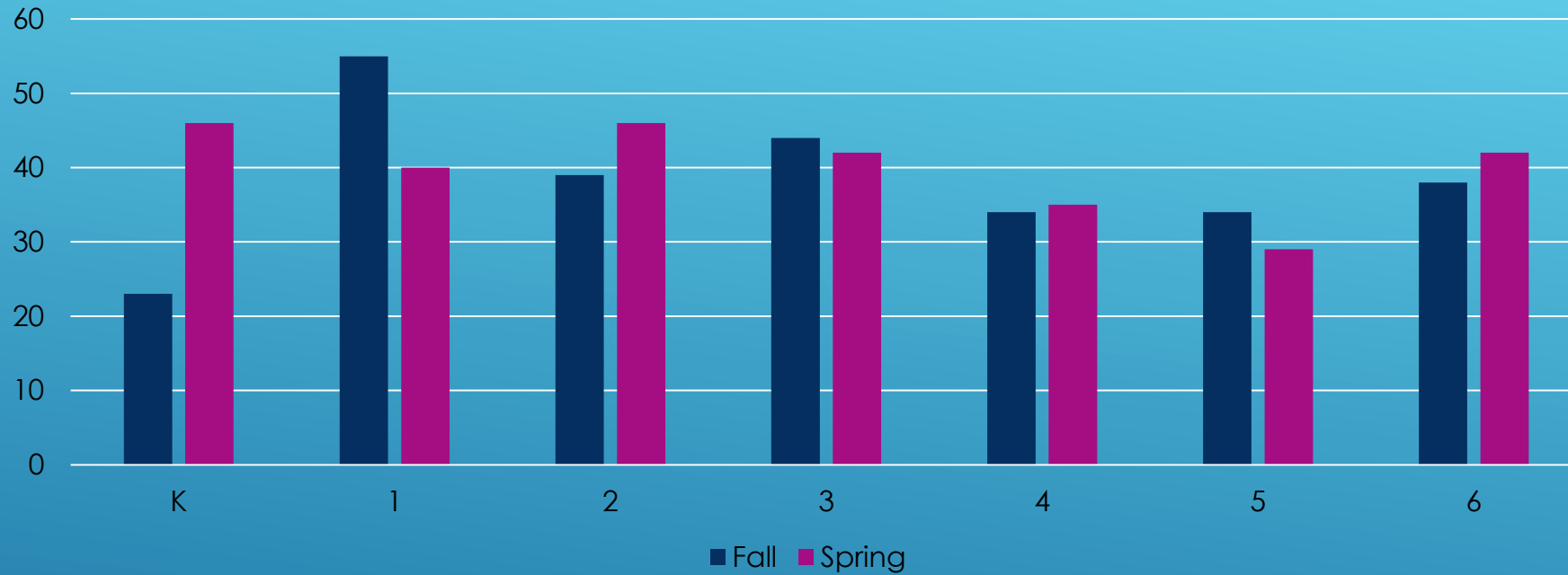
- ▶ Examine Transition from 8th to 9th grade
- ▶ Standardize grading across levels
- ▶ Look into proficiency based grading
- ▶ Improve instruction in all classes
- ▶ Improve communication with guardians

PLANS TO IMPROVE

- ▶ Switching to STAR assessments for both reading and math
- ▶ RTI was sporadic and adjusting throughout the year
- ▶ Some students showed great progress
- ▶ RTI system needs to be improved

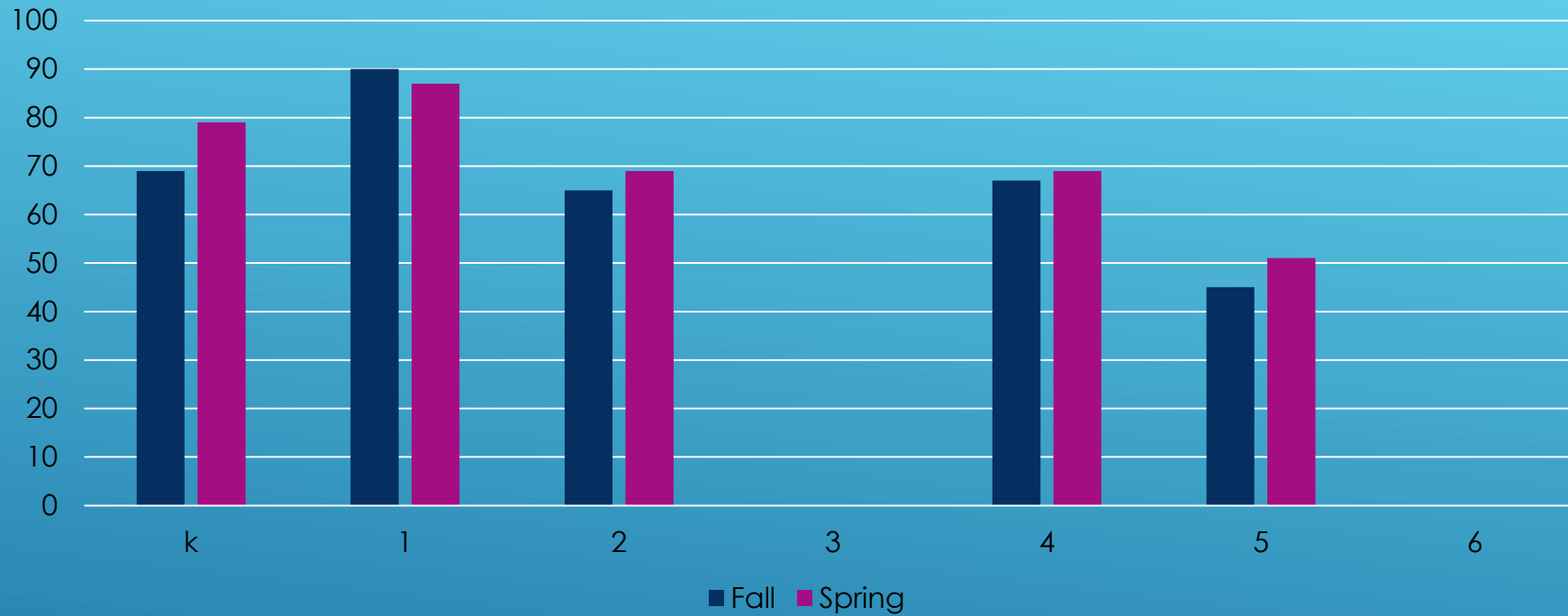
DIBELS READING AND MATH

Percentage of Students in Strategic or Core Categories



DIBELS READING DATA

Percentage of Students in Strategic or Core Categories



DIBELS MATH DATA

- ▶ Working with EdNorthwest to reestablish our RTI Program
- ▶ Switching to STAR Assessments
- ▶ School wide AVID program
- ▶ Improve instruction in all classrooms
- ▶ Change culture and raise expectations

PLANS FOR IMPROVEMENT

- ▶ Schools will not be rated this year
- ▶ We have some areas to celebrate
- ▶ We have areas to improve

SCHOOL REPORT CARDS

- ▶ Annually, 90% of SSD students in Math and Reading will meet individual growth targets, as measured by the Oregon State Assessments (grades 3-11) and STAR assessment system (grades K-2). **Not Met**
- ▶ Annually, all schools in SSD will improve their Report Card rating by 1 level as measured by the State of Oregon Report Card. Once a school has reached a level 4 rating the school will maintain that rating or higher. **Unknown**
- ▶ Annually increase 4 year and 5 year Graduation Rate by 3 percent, as measured by the State of Oregon Achievement Compact. **Met**

BOARD GOALS

THANK YOU

