

NORTH
SCALE 1" = 100'

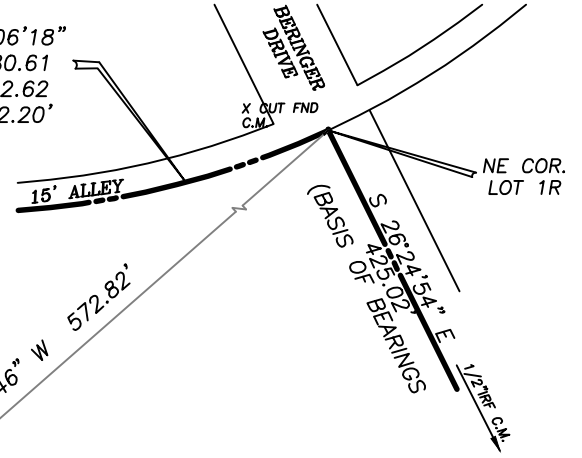


LEGEND

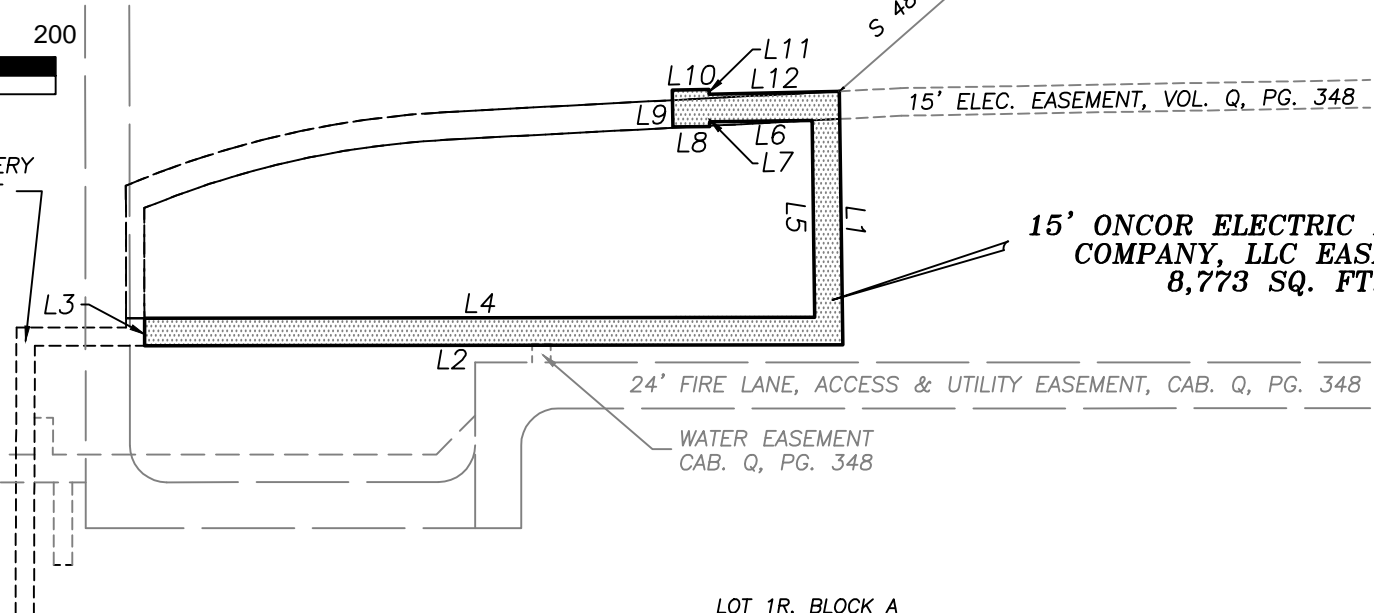
C.M. = CONTROLLING MONUMENT
POC = POINT OF COMMENCEMENT
POB = POINT OF BEGINNING

LOT 1R, BLOCK A
PRESTON RIDGE ADDITION
VOLUME 2011, PAGE 366
P.R.C.C.T.

A=24°06'18"
R=480.61
T=102.62
L=202.20'



10' ONCOR ELECTRIC DELIVERY
COMPANY LLC EASEMENT
CAB. 2010, PG. 241



**15' ONCOR ELECTRIC DELIVERY
COMPANY, LLC EASEMENT
8,773 SQ. FT.**

24' FIRE LANE, ACCESS & UTILITY EASEMENT, CAB. Q, PG. 348

WATER EASEMENT
CAB. Q, PG. 348

LOT 1R, BLOCK A
PRESTON RIDGE ADDITION
VOLUME 2011, PAGE 366
P.R.C.C.T.

LINE TABLE		
LINE	BEARING	DISTANCE
L1	S 00°46'13" E	137.70'
L2	S 89°55'41" W	379.18'
L3	N 00°04'19" W	15.00'
L4	N 89°55'41" E	364.00'
L5	N 00°46'13" W	106.92'
L6	S 89°13'47" W	55.69'
L7	S 00°46'13" E	2.50'
L8	S 89°13'47" W	20.00'
L9	N 00°46'13" W	20.00'
L10	N 89°13'47" E	20.00'
L11	S 00°46'13" E	2.50'
L12	N 88°44'35" E	70.69'

SURDUKAN SURVEYING, INC.
P.O. BOX 126
ANNA, TEXAS 75409
(972) 924-8200
TEXAS FIRM NO. 10069500

EXHIBIT "A"
**15' ONCOR ELECTRIC DELIVERY
COMPANY, LLC EASEMENT
ACROSS LOT 1R, BLOCK A
PRESTON RIDGE ADDITION
VOLUME 2011, PAGE 366
CITY OF FRISCO
COLLIN COUNTY, TEXAS**

SCALE 1" = 100'

DATE: JULY 29, 2019

SHEET 1 OF 2

JOB NO. 2010-24 ONCOR

LEGAL DESCRIPTION

BEING a 15' Oncor Electric Delivery Company easement across Lot 1R, Block A, Preston Ridge Addition, an Addition to the City of Frisco, Collin County, Texas, according to the plat thereof recorded in Volume 2011, Page 366, Plat Records of Collin County, Texas, and being more particularly described by metes and bounds as follows:

BEGINNING at a to a point in the north line of an existing 15' Electric Easement as shown on the plat of Lot 1R, said point being S 48°45'46" W a distance of 572.82' from a "X" cut found for the northeast corner of said Lot 1R;
THENCE S 00°46'13" E a distance of 137.70' to a point for corner;
THENCE S 89°55'41" W a distance of 379.18' to a point for corner;
THENCE N 00°04'19" W a distance of 15.00' to a point for corner;
THENCE N 89°55'41" E a distance of 364.00' to a point for corner;
THENCE N 00°46'13" W a distance of 106.92' to a point for corner;
THENCE S 89°13'47" W a distance of 55.69' to a point for corner;
THENCE S 00°46'13" E a distance of 2.50' to a point for corner;
THENCE S 89°13'47" W a distance of 20.00' to a point for corner;
THENCE N 00°46'13" W a distance of 20.00' to a point for corner;
THENCE N 89°13'47" E a distance of 20.00' to a point for corner;
THENCE S 00°46'13" E a distance of 2.50' to a point for corner;
THENCE N 88°44'35" E a distance of 70.69' to the POINT OF BEGINNING
and containing 8,773 Square Feet or 0.201 Acres of land.



NOTES:

1. The original copy will have original signatures, stamp seal and an impression seal.
2. Copyright 2019, Surdukan Surveying, Inc.
3. This survey is being provided solely for the use of the current parties.
4. This survey is subject to all easements of record.
5. The basis of bearings is the northeast line of Lot 1R, Block a, Preston Ridge Addition recorded in Volume 2011, Page 366, P.R.C.C.T.
Bearing of line S 26°24'54" E.

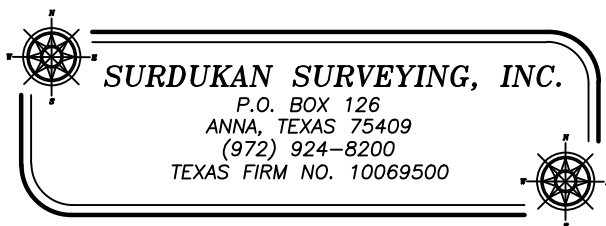


EXHIBIT "A"
**15' ONCOR ELECTRIC DELIVERY
COMPANY, LLC EASEMENT
ACROSS LOT 1R, BLOCK A
PRESTON RIDGE ADDITION
VOLUME 2011, PAGE 366
CITY OF FRISCO
COLLIN COUNTY, TEXAS**