



LINCOLN COUNTY
SCHOOL DISTRICT

IMPACT REPORT



2025-26

lincoln.k12.or.us



Impact Report Year 2025-26

Empowerment & Engagement

Lincoln County School District is excited to launch our new annual Impact Report. This inaugural report is designed to share information in areas in which LCSD programs make a direct impact in our schools and community outside of the classroom. We believe our responsibility to provide a well-rounded and meaningful education goes beyond a strong academic foundation and truly supports our commitment to Every Child, Every Day, Future Ready.

We are committed to removing barriers and fostering inclusivity to ensure every student succeeds, and gathering quarterly feedback from the LCSD Equity Committee helps in this process. This year, we analyzed family engagement night and conference attendance data to find new ways to connect with families and the community. By expanding our bilingual support services and increasing our real-time interpretation at our district events, we are working to ensure that every family feels heard, valued, and informed. We strive to move beyond family engagement to family empowerment, providing events and opportunities our families want to be a part of to plan, learn, and celebrate together.

Our Student Services Department worked closely with our school counselors, social workers, area care teams, homeless advocates, and Lincoln County Public Health to increase support and access to resources. We also continued to strengthen our partnership with our School-Based Health Centers, increasing access to mental health and primary care for students and families. We know these are vital services in our schools and community.

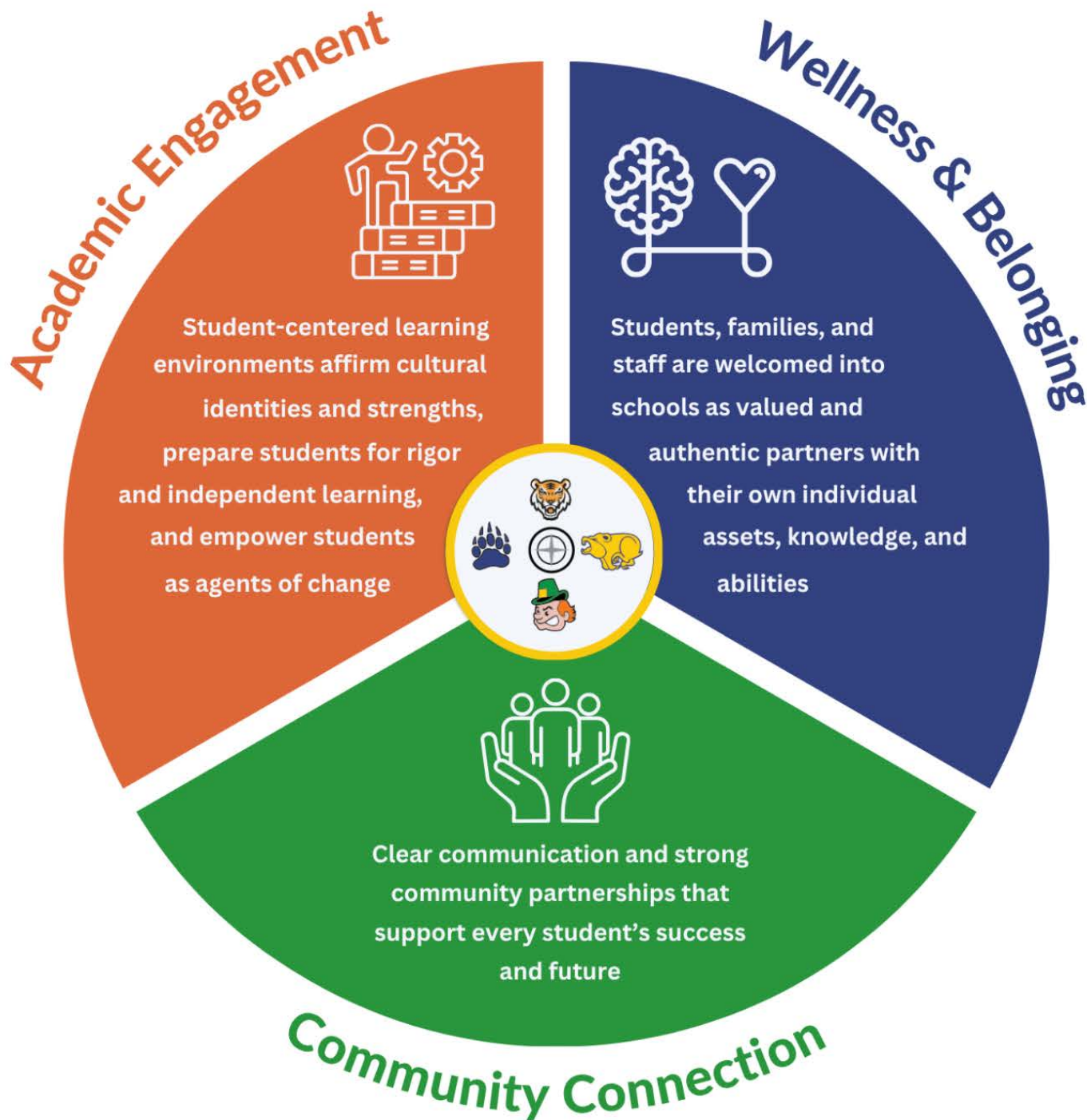
We know we still have a long way to go to provide equitable access for all of our families and students, but we believe this report is a start in sharing where we are, in hopes that others will share with us how we can continue to improve. Together, we will move from an engaged school community to one that is built by the collective empowerment of all of Lincoln County. Our children deserve the very best we have to give, and we are dedicated to making it happen.



**DR. MAJALISE TOLAN, SUPERINTENDENT
LINCOLN COUNTY SCHOOL DISTRICT**



Lincoln County School District CONTINUOUS IMPROVEMENT PRIORITIES



Grounded in Equity

Lincoln County School District



Academic Engagement

Strong Systems for Student Success

Balanced and Meaningful Assessment

High-Quality Teaching and Engaging Learning

Innovative Use of Digital Tools



Resources & Service

Strong Educators, Strong Classrooms

Responsive Systems that Support Every Learner

A Well-Rounded Education for Every Student

Equity in Every Decision and Service

Engaged, Supported, and Celebrated Staff



Community Connection

Welcoming and Inclusive Schools

Clear, Accessible, and Inclusive Communication

Elevate Student Voice and Leadership

Strong Community Partnerships



Equity Team

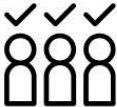


Established in 2020, the Equity Team applies the LCSD Equity Lens policy AAA to evaluate key topics sourced from both internal staff and the broader community.

TOPICS EXPLORED OVER THE PAST TWO YEARS:

The Equity Team meets in different geographic areas in our district. This allows authentic student voice as student representatives from the schools in that area engage in a School Culture and Climate Cafe with the Equity Committee members.

20+ students have participated in the Toledo and Newport schools.



Attendance Practices



School Resource Officers



Grading Practices



Conference Formats



Land Acknowledgement Development & Review



Exclusionary Data



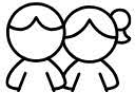
Culture & Climate Through Student Voice



Community Engagement Participation

To request a topic for review for the Equity Team please contact Dr. Majalise Tolan at majalise.tolan@lincoln.k12.or.us

Early Learning



52 children ages 3-4 were served across the district, in four of our elementary schools.

- Oceanlake, Tiger Preschool
- Toledo Elementary, Boomers Preschool
- Crestview Heights, Wee Irish Preschool
- Yaquina View, Cubby Preschool

We have a total capacity of **72 preschool spots district-wide**. Out of those 72 total spots, 37 are fully funded by the Preschool Promise grant.

This means more than half of our early learning slots are completely free to families in our community.



21st Century After School Program



Served 50 students in after-school onsite enrichment programs at Sam Case and Crestview Heights.

Served an additional 30 students in partner sites located in Siletz, Depoe Bay and Lincoln City.

Family Engagement

LCSD strives to strengthen connections between families, schools and the broader community to support success across the district.

2,260 Students Represented at Events

- **Back-to-School nights**, open houses, and meet-the-teacher events. 54% attendance
- **Parent-Teacher conferences** and family engagement meetings. 59% attendance.
- **College and Career Readiness programs**
- Financial aid, FAFSA, and **scholarship support events**
- **Family literacy** and academic support nights
- **Community input** and feedback meetings
- **Music concerts**, theater productions, band and choir performances
- **Cultural and educational family events**
- **Family dinners**, movie nights, and social gatherings
- **Carnivals**, festivals, and seasonal celebrations
- **Athletic recognition** and parent information events
- **Student leadership** and recognition ceremonies
- **Transition events** supporting students moving between grade levels
- **Parent education** and informational workshops



Bilingual Support

At Lincoln County School District (LCSD), we believe that language should never be a barrier to a high-quality education or active family engagement. We are steadfast in our commitment to providing comprehensive bilingual support for both our students and their parents, ensuring that every family in our community feels heard, valued, and informed.

01.

The LCSD Hispanic Family Liaison provides strategic outreach to our Hispanic families in the **North and West areas** by identifying and removing barriers to school engagement. Their vital role ensures all families feel welcome, valued, and fully invited to actively participate in school life and events.



02.

Bilingual customer service staff provide immediate, welcoming linguistic support to ensure all families can easily navigate school systems and access vital information from their very first point of contact.

03.

Bilingual tutors provide essential academic assistance and linguistic support to help students successfully navigate school. They also facilitate vital communication between families and school staff by translating announcements, newsletters and interpreting phone calls, parent-teacher conferences and other school events.



To ensure real-time inclusivity, LCSD utilizes **Specialized Interpretation Headsets** that allow Spanish-speaking families and students to participate fully in major district events, from school board meetings to milestone celebrations like graduation. *Other languages available upon request!*



Title VI/TAPP

Title VI Indian Education is a federally-funded program through the Lincoln County School District that has served Native students grades kindergarten through 12 since 1975. Tribal Attendance Promising Practices (TAPP) focuses on addressing the root causes of chronic absenteeism

2025-26 Engagement

- **Monthly** parent meetings
- **Orange Shirt Day**
- **Indigenous People's Day**
- **Native Youth Summit**
- **Wellness Day**
- **Moving up Ceremony**
- **Annual PD** for all teachers with Confederated Tribes of Siletz Indians
- **Tribal Consultation** on-going with CTSI
- **Native Student Clubs**

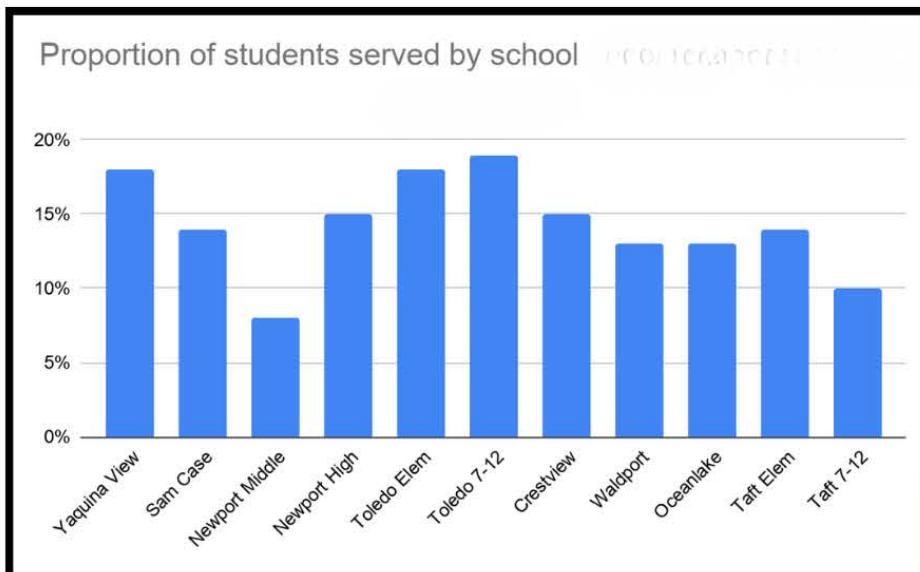


Student Support

Lincoln County School District's Student Services team, including **social workers, health service advocates (HSA), HELP staff, nurses,** and **Hispanic Family Liaisons**, provides critical support to students and families throughout the year, helping remove barriers to learning and connecting families with resources, services, and assistance when they are needed most.

The HELP program eliminates educational barriers for students and families experiencing temporary housing, or life without a parent or guardian, including those supported by the McKinney-Vento Act and Foster Care system. Our vision is to ensure every student has the stability and equal access needed to thrive academically.

500+ students supported through the McKinney-Vento program (HELP)



Needs supported through the Student Service Center:

- **Physical Environment:** housing, clothing, utilities
- **Social Needs:** transportation, parent education, employment
- **Food:** food pantries, SNAP benefits
- **Education:** tutoring resources, school supplies
- **Health Systems:** SBHC, vision, school nurse

Through an internal Request for Support (RFS) system, staff, families and community partners are able to request assistance from the Student Services Team.

Locations of Student Service Centers:

- Taft Elementary (North)
- Newport High (West)
- Waldport Middle/High (South)
- Toledo Jr/Sr (East)



LCSD Nursing Services

LCSD nurses coordinate with medical providers to ensure student with medical needs have health plans that are accurate, thorough and current.

In alignment with Oregon health standards, nurses delivered approximately **40 lessons** to middle and high school students, focusing on puberty, reproduction, and sexual health.



2,730

Vision Screenings



757

Hearing Screenings



436

Dental Screenings

School-Based Health Centers

LCSD partners with Lincoln County primary care and behavioral health to provide School-Based Health Centers (SBHC). All four high schools have SBHCs and they are open to all students. LCSD HSAs are in SBHCs twice a week.

550+ SBHC Primary Care visits by students

SBHCs are open from 8:00 a.m. to 4:30 p.m. with specific days allocated for primary care and behavioral health services at each location. After-hours support is available through a primary care nurse help line and a mental health crisis line at 541-265-4179.

For more information or to schedule an appointment, please contact:

- Newport SBHC: 541-265-0472
- Taft 7-12 SBHC: 541-265-0474
- Waldport SBHC: 541-265-0471
- Toledo SBHC: 541-265-0473



Well-Rounded Education

ATHLETICS



28 SPORTS OFFERED

All schools affiliate with Oregon Schools Activities Association and other governing organizations.

1,810 TOTAL STUDENT ATHLETES

THE ARTS

Through the braided funding including Student Investment Account (SIA), all students K-12 receive high-quality music education.



36+ MUSIC CONCERTS

14+ THEATER PRODUCTIONS



Community Partnerships include:

- Newport Symphony Orchestra
- Music Is Instrumental
- Siletz Bay Music Festival
- Newport Performing Arts Center
- Newport Visual Arts Center
- Lincoln City Cultural Center

All secondary schools offer visual and performing arts courses taught by LCSD staff or through community partnerships with the Sitka Center and Lincoln City Cultural Center.

CAREER & TECHNICAL EDUCATION

13 PROGRAMS



Forestry, Culinary, Digital Arts, Early Childhood Education, Photography/Portfolio, Visual Communications, Manufacturing, Health Occupations, Architecture and Construction. *Some programs offered in more than one school.*

945 CAREER & TECHNICAL EDUCATION STUDENTS



LCSD Board of Directors



PETER VINCE
CHAIR



JASON MALLOY
VICE-CHAIR



MITCH PARSONS



DR. NATALIE SCHAEFER



DAVE COWDEN

For more information, please contact us:

PHONE: 541.265.9211

EMAIL: TLCO@lincoln.k12.or.us

ADDRESS:
1212 NE Fogarty St.,
Newport OR 97365

WEBSITE: lincoln.k12.or.us