



UNITED INDEPENDENT SCHOOL DISTRICT INFORMATIONAL ITEM

TOPIC: T-TESS Dimension 17: Student Growth Measure

SUBMITTED BY: Emma Leza, Executive Director of Instructional Accountability

OF: Curriculum & Instruction Department

APPROVED FOR TRANSMITTAL TO SCHOOL BOARD: _____

DATE ASSIGNED FOR BOARD CONSIDERATION: September 20, 2017

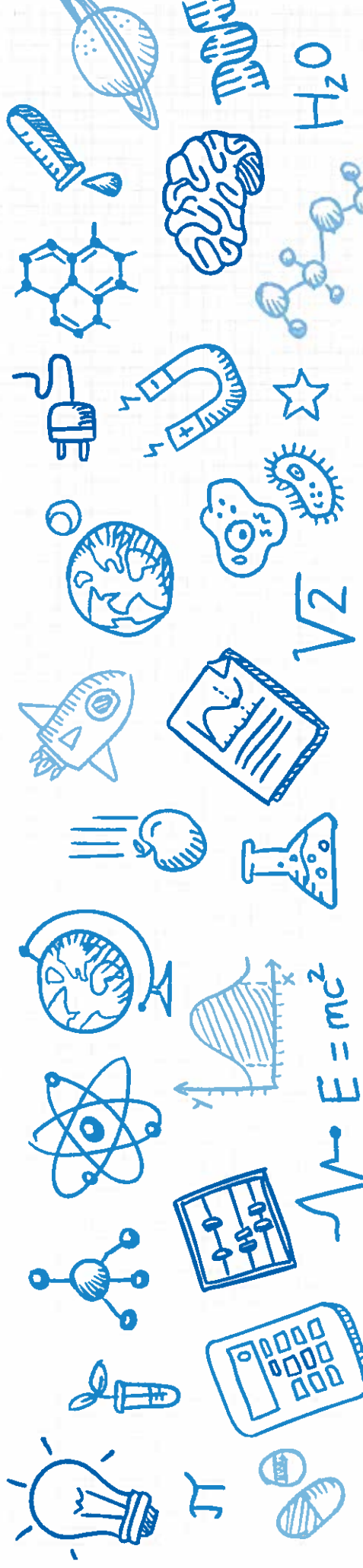
INFORMATIONAL REPORT:

Student Growth Measure will be implemented district-wide for the 2018-2019 school year for all teachers at UISD.

A Student Growth Measure Pilot will be implemented during the 2017-2018 school year to better inform teachers, campus and district administrators and the UISD Board on the best implementation process for 2018-2019.

Student Growth Measure Instructional Committee Presentation

September 12, 2017



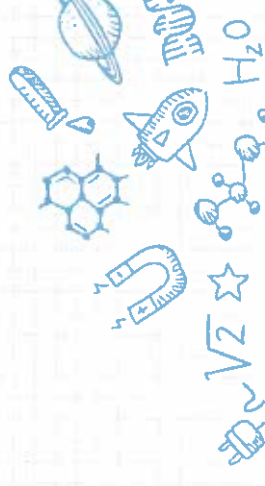


Student Growth Measure

Student growth measures how much a student progresses academically during his or her time with a particular teacher.

It takes into consideration a student's **entering skill level** when measuring how much the student grew over time.

It considers equally students who enter behind grade level, on grade level, and beyond grade level, tailoring growth expectations to each student's context.



Source: Student Growth: T-TESS FAQ Support at <https://teachfortexas.org/Views/FAQ>



Student Growth Measure

Student growth seeks to provide feedback to teachers and their appraisers that captures where teachers are in their practice in order to pinpoint strengths and areas for development.

By measuring growth, a teacher develops a better understanding about the academic impact of his or her instructional choices for the purpose of solidifying strengths and identifying opportunities for development.

Student Growth will be calculated for every teacher beginning with the 2018-2019 school year. Student Growth will be used to set goals and professional development plans (GSPD).

If a teacher is set to be evaluated with T-TESS, Student Growth will be part of the evaluation in 2018-19.

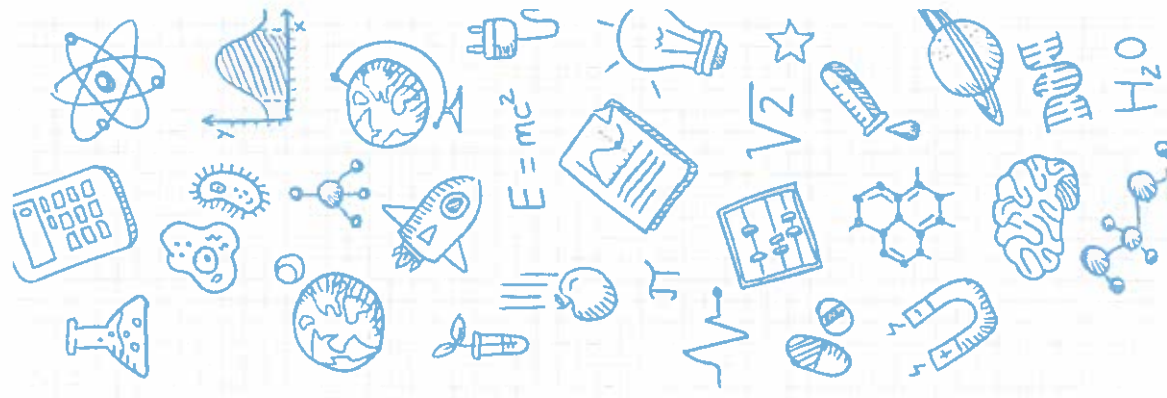
Source: TEA T-TESS Guidance on Student Growth in T-TESS

2017-2018 Pilot for Student Growth Measure Teacher Reports

Dimension 17: Student Growth Measure will be evaluated as a separate dimension in T-TESS.

Individualized teacher reports will be created and made available for teachers and campus administrators to allow them to make necessary adjustments to the student learning process and set appropriate goals for the following school year.

Campus and district administrators will also receive campus-wide reports for every teacher at the campus.





We will be collecting input from teachers and administrators participating in the pilot to make necessary adjustments before full implementation next school year.

THANKS!

