



Midwest Transit Equipment, Inc.
146 W. Issert Drive • P.O. Box 582
Kankakee, IL 60901
(800) 933-2412

May 8, 2019

Geneva Community Unit School District 304
Mr. Dean Romano
227 N. 4th Street
Geneva, IL 60134

Mr. Romano,

Thank you for allowing Midwest Transit Equipment, Inc. the opportunity to furnish this quote on your school bus equipment needs. These buses would replace the (4) 2014 Chevrolet 27 passenger buses coming off of lease. School has the option to extend the lease or return to Midwest.

Quote A

Two (2) New 2019 Chevrolet-Collins 30 passenger school buses with all seats have ICS. Capacity would be 20 with all ICS passengers. Specification 19-330. State bid #PSD4018316, please include this number on the purchase order.
Sales Price: \$61,791.00 x 2 units=\$123,582.00.

Quote B

One (1) 2017 Chevrolet-Starcraft 32 passenger school buses with all seats have ICS. Capacity would be 21 with all ICS passengers.
Sales Price: \$47,552.00.

Quote C

One (1) 2017 Chevrolet-Starcraft 28 passenger school buses with lap belts.
Sales Price: \$48,360.00

Total purchase price for four (4) buses would be \$219,494.00

Thank you again for this opportunity. I can be reached in the office at (800) 933-2412 ext 1476, cell at (219) 688-7527, or email at scott.vanderlee@midwesttransit.com.

Sincerely,

Scott Vanderlee
Sales Manager- School Bus

2019 CHEVROLET/COLLINS NEXBUS 30 – PASSENGERS LAP BELTS
20 – INTEGRATED CHILD RESTRAINT SEATING

CHASSIS

2019 CHEVROLET CG-33803 4500 SERIES
 159" WHEELBASE
6.0L GM GASOLINE V8 ENGINE 341 HP
 6-SPEED AUTOMATIC TRANS. W/OVERDRIVE
 POWER STEERING
 TILT STEERING
 CRUISE CONTROL
 POWER BRAKES W/4 WHEEL ABS
 DISC FRONT / REAR BRAKES
 BRAKE WARNING LIGHT
 FRONT STABILIZER BAR
 DRIVE LINE GUARDS
 4,600 # FRONT AXLE CONSTRUCTION
 4,600 # FRONT SPRINGS - COIL TYPE
 9,600 # REAR AXLE – 3.73 RATIO
 9,600 # REAR SPRINGS - PARABOLIC TYPE
14,200 # GVWR
 FRONT & REAR SHOCK ABSORBERS
 6 - LT225/75R16D ALL SEASON RADIAL TIRES
 DUAL REAR WHEELS
 HEAVY DUTY COOLING
 220 AMP ALTERNATOR
 DUAL BATTERIES IN SKIRT MOUNTED COMPARTMENT
 33 GALLON FUEL TANK
 FUEL WATER SEPERATOR
 HEAT SHIELD-FUEL TANK
 HALOGEN HEAD LAMPS
 DUAL ELECTRIC HORNS
 AUTOMATIC RESETTNG CIRCUIT BREAKERS
 SCHOOL BUS CHASSIS EQUIPMENT
 TINTED LAMINATED WINDSHIELD
 TINTED DRIVER'S WINDOW
 FRONT HEATER / DEFROSTER
 DRIVER'S SUN VISOR OEM
 2 - SPEED INTERMITTENT WIPERS
 HIGH BACK DRIVER SEAT - VINYL
 ARMREST ON DRIVER DOOR & RH OF DR
 (2) 12 VOLT POWER SOCKETS
 SPEEDOMETER / ODOMETER
 VOLTMETER / FUEL LEVEL GAUGES
 OIL PRESSURE / WATER TEMP. GAUGES
 REAR TOW HOOKS
 3 YEAR / 36,000 MILE WARRANTY
 5 YEAR / 100,000 MILE POWERTRAIN WARRANTY
 FRONT DASH HEAT WITH FULL DEFROST
FRONT IN DASH W/ REAR IN WALL
AIR CONDITIONING 55,000 BTU TOTAL
W/SKIRT MOUNTED CONDENSOR

BODY

2019 COLLINS NEXBUS MODEL DE516
FLAT FLOOR BODY CONSTRUCTION
 76.5" HEAD ROOM OVER PLYWOOD FLOOR
 EXTERIOR DRIVER'S ENTRANCE STEP
 RH STAINLESS STEEL GRAB RAIL
 MANUAL OPERATED OPEN-OUT ENTRANCE DOOR
 LOWER GLASS-EMERGENCY DOOR
 REAR EMERGENCY DOOR W/VANDAL LOCK
 REAR DOOR RETAINER WITH GAS SHOCK
 & STARTER INTERLOCK & PILOT LIGHT
 INSULATION COMPLETE - 2.5"
 4 – PIECE REAR DOOR HINGE
 ADDITIONAL REAR DOOR BUZZER

19-330

BODY

3 - SIDE RUB RAILS INCLUDING SKIRT RAIL
 FULL BODY UNDERCOATING
 ALUMINIZED PANELS BELOW WINDOWS
 STEEL EXTERIOR SIDE PANELS
 STATIC ROOF VENT –NON CLOSING
 (1) AUXILLIARY DEFROSTER FAN
 (1) TRANSPEC 1975 ROOF HATCH
 (2) EMERGENCY PUSH OUT EXIT WINDOWS
 TINTED TEMPERED SIDE AND REAR WINDOWS – 32%
 WINDOW STOP LINES
 HEATER 60,000 BTU REAR FLOOR MOUNTED
 HEATER CUT-OFF VALVE – DUAL ¼ TURN
 UNDER BODY BENEATH RH VIEW WINDOW
 MARKER & CLEARANCE LAMPS - LED
 SIDE DIRECTIONALS -LED
 BACKUP LAMPS 4" CLEAR – LED
 REAR DIRECTIONAL 7" AMBER BULB
 REAR STOP/TAIL 7" RED BULB
 BACK UP ALARM 112db
 DOME LAMPS WIRED THRU IGNITION
 DRIVERS DOME LAMP W/SEPARATE SWITCH
 8 LAMP WARNING SYSTEM W/BLACK PAINTED BORDER
 LOW PROFILE STROBE LAMP W/SWITCH
 BODY CUT-OFF SOLENOID –IGNITION ACTIVATED
 YELLOW NOISE SUPPRESSION SWITCH
 (10) 39" DOT HB SEAT BELT READY SEATS WITH LAP BELTS
ALL SEATS W/ (2) BUILT IN CHILD RESTRAINT SEATS (ICS/CRS)
 39" DOT HB BARRIERS-FRONT
 42 OZ GRAY **FIRE BLOCK** UPHOLSTERY
 PADDED SHOULDER RAILS
 ENT./EMER./ DOOR HEADER PADS
 DOOR SWITCH - STEP WELL LAMP
 REAR DOOR BUZZER W/PILOT LIGHT WIRED TO VANDAL LOCK
 LETTERING TO FEDERAL & STATE REQUIREMENTS
 3M REFLECTIVE TAPE DOWN BOTH SIDES, REAR END & EXITS
 REFLECTIVE SCHOOL BUS SIGNS FRONT AND REAR
 1/2" EXTERIOR GRADE PLYWOOD OVER 14 GA STEEL SUB FLOOR
 GRAY KOROSEAL FLOOR COVERING
 PEBBLE TOP STEP TREADS
 2" WHITE STANDEE LINE IN FLOOR
 6" X 9" CERTIFICATE HOLDER
 AM / FM / CD / RADIO W / CLOCK & 4 SPEAKERS
 ROSCO COMBINATION E-Z BRACKET HEATED MIRROR SYSTEM
 ACCUSTYLE 815 SERIES 7" X 9.5" FLAT REAR VIEW MIRROR
 PLUS 8" X 4" CONVEX MIRROR
 EYE-MAX LP OVAL CROSS VIEW MIRRORS
REMOTE POWERED HEATED EXTERIOR MIRRORS
 REFLECTORS AS REQUIRED
 FRONT AND REAR MUD FLAPS
 REAR RUBBER FENDERETTES
 ROOF TOP PAINTED WHITE
 ELECTRIC STOP ARM REFLECTIVE W/ RED FLASHING LIGHTS
 ELECTRIC CROSSING GATE / POLY ARM W/INTERRUPT SWITCH
 ILLINOIS I/S AND O/S DECALS
 CHILD CHECK MATE SYSTEM W/DOME LIGHT ACTIVATION
 CUP HOLDER IN DRIVERS AREA

SAFETY EQUIPMENT

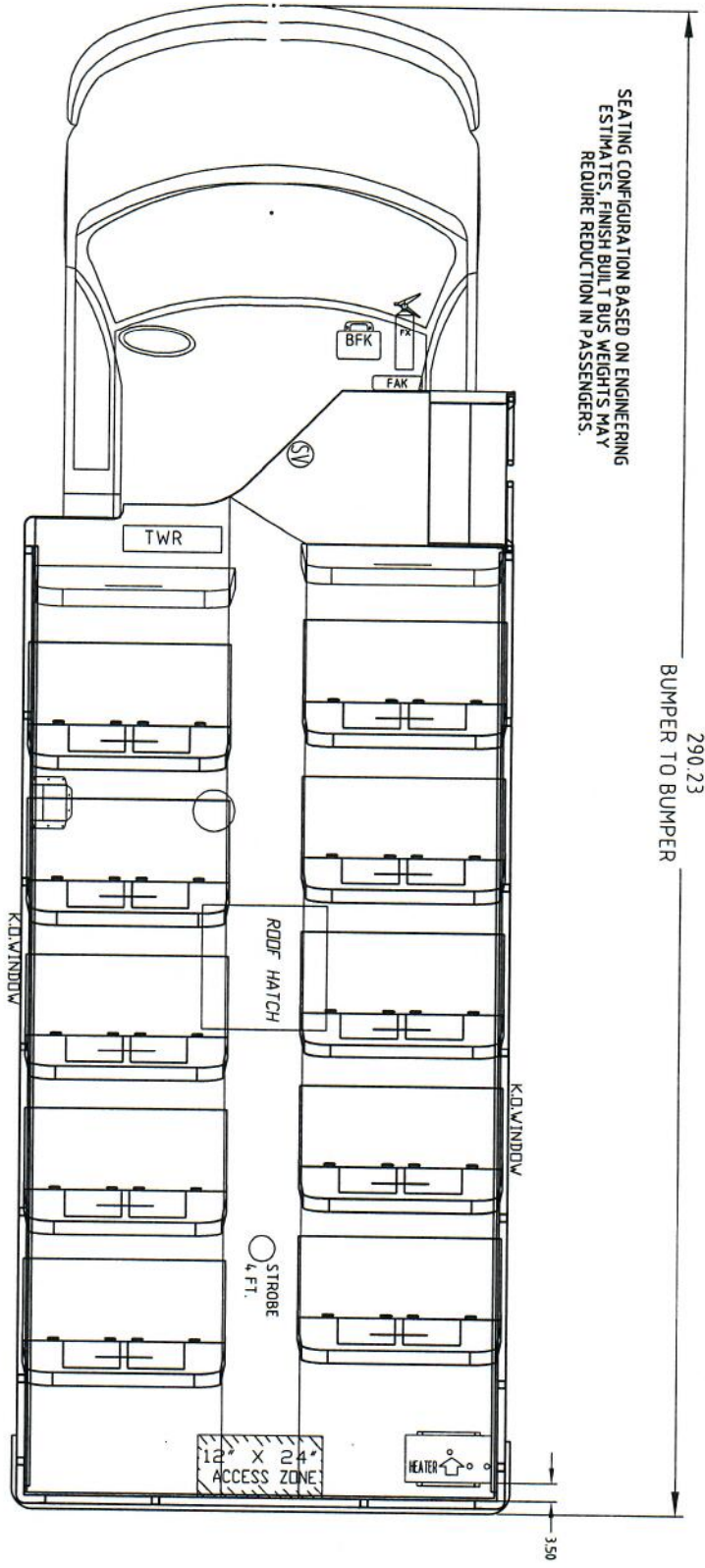
SEAT BELT CUTTER
 5# FIRE EXTINGUISHER / REFLECTIVE TRIANGLES
 FIRST AID KIT / BODY FLUID KIT

DIMENSIONS

OVERALL HEIGHT – 115"
 OVERALL WIDTH – 96"
 OVERALL LENGTH – 290"
 PASSENGER COMPARTMENT – 184"

A

19-330



SEATING CONFIGURATION BASED ON ENGINEERING ESTIMATES. FINISH BUILT BUS WEIGHTS MAY REQUIRE REDUCTION IN PASSENGERS.

290.23
BUMPER TO BUMPER

DE516

MIDWEST TRANSIT SEATING PLAN

30 Passengers

5 39 inch LAP BELT CRS RH Seats at 26/25 inch Hip to Knee

5 39 inch LAP BELT CRS LH Seats at 26/25 inch Hip to Knee

1/2" PLYWOOD SUBFLOOR TEMPLATE DRAWING #442662-5

Approved By: _____ Date: _____



COLLINS BUS CORP.
P.O. BOX 2946
HUTCHINSON, KS.
67504-2946
FORM: F-7.3.06 REVISION 0

THIS DRAWING AND ALL INFORMATION THEREON IS THE PROPERTY OF COLLINS IND. INC.

DRAWN BY: RM

DATE: 07/31/18

TITLE CHEVY DE516 SB

DRAWING NO. 78387-90DE516-C14G

2017 CHEVROLET/COLLINS NEXBUS 32 - PASSENGERS

B

CHASSIS

2017 CHEVROLET CG-33803 4500 SERIES
159" WHEELBASE
6.0L GASOLINE V8 ENGINE 342 HP
6-SPEED AUTOMATIC TRANS. W/OVERDRIVE
POWER STEERING
TILT STEERING
CRUISE CONTROL
POWER BRAKES W/4 WHEEL ABS
DISC FRONT / REAR BRAKES
BRAKE WARNING LIGHT
FRONT STABILIZER BAR
DRIVE LINE GUARDS
4,600 # FRONT AXLE CONSTRUCTION
4,600 # FRONT SPRINGS - COIL TYPE
9,600 # REAR AXLE - 3.73 RATIO
9,600 # REAR SPRINGS - PARABOLIC TYPE
14,200 # GVWR
FRONT & REAR SHOCK ABSORBERS
6 - LT225/75R16D ALL SEASON RADIAL TIRES
DUAL REAR WHEELS
HEAVY DUTY COOLING
220 AMP ALTERNATOR
DUAL BATTERIES IN SKIRT MOUNTED COMPARTMENT
33 GALLON FUEL TANK
FUEL WATER SEPARATOR
HEAT SHIELD-FUEL TANK
HALOGEN HEAD LAMPS
DUAL ELECTRIC HORNS
AUTOMATIC RESETTING CIRCUIT BREAKERS
SCHOOL BUS CHASSIS EQUIPMENT
TINTED LAMINATED WINDSHIELD
TINTED DRIVER'S WINDOW
FRONT HEATER / DEFROSTER
DRIVER'S SUN VISOR OEM
2 - SPEED INTERMITTENT WIPERS
HIGH BACK DRIVER SEAT - VINYL
ARMREST ON DRIVER DOOR & RH OF DR
(2) 12 VOLT POWER SOCKETS
SPEEDOMETER / ODOMETER
VOLTMETER / FUEL LEVEL GAUGES
OIL PRESSURE / WATER TEMP. GAUGES
REAR TOW HOOKS
3 YEAR / 36,000 MILE WARRANTY
5 YEAR / 100,000 MILE POWERTRAIN WARRANTY
FRONT DASH HEAT WITH FULL DEFROST
FRONT IN DASH W/ REAR IN WALL
AIR CONDITIONING 55,000 BTU TOTAL
W/SKIRT MOUNTED CONDENSOR

BODY

2017 COLLINS NEXBUS MODEL DE516
FLAT FLOOR BODY CONSTRUCTION
76.5" HEAD ROOM OVER PLYWOOD FLOOR
EXTERIOR DRIVER'S ENTRANCE STEP
RH STAINLESS STEEL GRAB RAIL
MANUAL OPERATED OPEN-OUT ENTRANCE DOOR
LOWER GLASS-EMERGENCY DOOR
REAR EMERGENCY DOOR W/ VANDAL LOCK
REAR DOOR RETAINER WITH GAS SHOCK
& STARTER INTERLOCK & PILOT LIGHT
INSULATION COMPLETE - 2.5"
4 - PIECE REAR DOOR HINGE
ADDITIONAL REAR DOOR BUZZER

BODY

3 - SIDE RUB RAILS INCLUDING SKIRT RAIL
FULL BODY UNDERCOATING
ALUMINIZED PANELS BELOW WINDOWS
STEEL EXTERIOR SIDE PANELS
STATIC ROOF VENT -NON CLOSING
(1) AUXILLIARY DEFROSTER FAN
(1) TRANSPEC 1975 ROOF HATCH
(2) EMERGENCY PUSH OUT EXIT WINDOWS
TINTED TEMPERED SIDE AND REAR WINDOWS - 32%
WINDOW STOP LINES
HEATER 60,000 BTU REAR FLOOR MOUNTED
MARKER & CLEARANCE LAMPS - LED
SIDE DIRECTIONALS -LED
BACKUP LAMPS 4" CLEAR - LED
REAR DIRECTIONAL 7" AMBER BULB
REAR STOP/TAIL 7" RED BULB
BACK UP ALARM 112db
DOME LAMPS WIRED THRU IGNITION
DRIVERS DOME LAMP W/SEPARATE SWITCH
8 LAMP WARNING SYSTEM W/BLACK PAINTED BORDER
LOW PROFILE STROBE LAMP W/SWITCH
BODY CUT-OFF SOLENOID -IGNITION ACTIVATED
YELLOW NOISE SUPPRESSION SWITCH
(11) 39" DOT HB SEAT BELT READY **SEATS WITH LAP BELTS**
(1) 30" DOT HB SEAT BELT READY **SEATS WITH LAP BELTS**
39" DOT HB BARRIERS-FRONT
42 OZ GRAY **FIRE BLOCK** UPHOLSTERY
PADDED SHOULDER RAILS
ENT./EMER./ DOOR HEADER PADS
DOOR SWITCH - STEP WELL LAMP
REAR DOOR BUZZER W/PILOT LIGHT WIRED TO VANDAL LOCK
LETTERING TO FEDERAL & STATE REQUIREMENTS
3M REFLECTIVE TAPE DOWN BOTH SIDES, REAR END & EXITS
REFLECTIVE SCHOOL BUS SIGNS FRONT AND REAR
1/2" EXTERIOR GRADE PLYWOOD OVER 30 GA STEEL SUB FLOOR
GRAY KOROSEAL FLOOR COVERING
PEBBLE TOP STEP TREADS
2" WHITE STANDEE LINE IN FLOOR
6" X 9" CERTIFICATE HOLDER
AM / FM / CD / RADIO W / CLOCK & 4 SPEAKERS
ROSCO COMBINATION E-Z BRACKET HEATED MIRROR SYSTEM
ACCUSTYLE 815 SERIES 7" X 9.5" FLAT REAR VIEW MIRROR
PLUS 8" X 4" CONVEX MIRROR
EYE-MAX LP OVAL CROSS VIEW MIRRORS
REMOTE POWERED HEATED EXTERIOR MIRRORS
REFLECTORS AS REQUIRED
FRONT AND REAR MUD FLAPS
REAR RUBBER FENDERETTES
ROOF TOP PAINTED WHITE
ELECTRIC STOP ARM REFLECTIVE W/ RED FLASHING LIGHTS
ELECTRIC CROSSING GATE / POLY ARM W/INTERRUPT SWITCH
ILLINOIS I/S AND O/S DECALS
CHILD CHECK MATE SYSTEM W/DOME LIGHT ACTIVATION
CUP HOLDER IN DRIVERS AREA

SAFETY EQUIPMENT

SEAT BELT CUTTER
5# FIRE EXTINGUISHER / REFLECTIVE TRIANGLES
FIRST AID KIT / BODY FLUID KIT

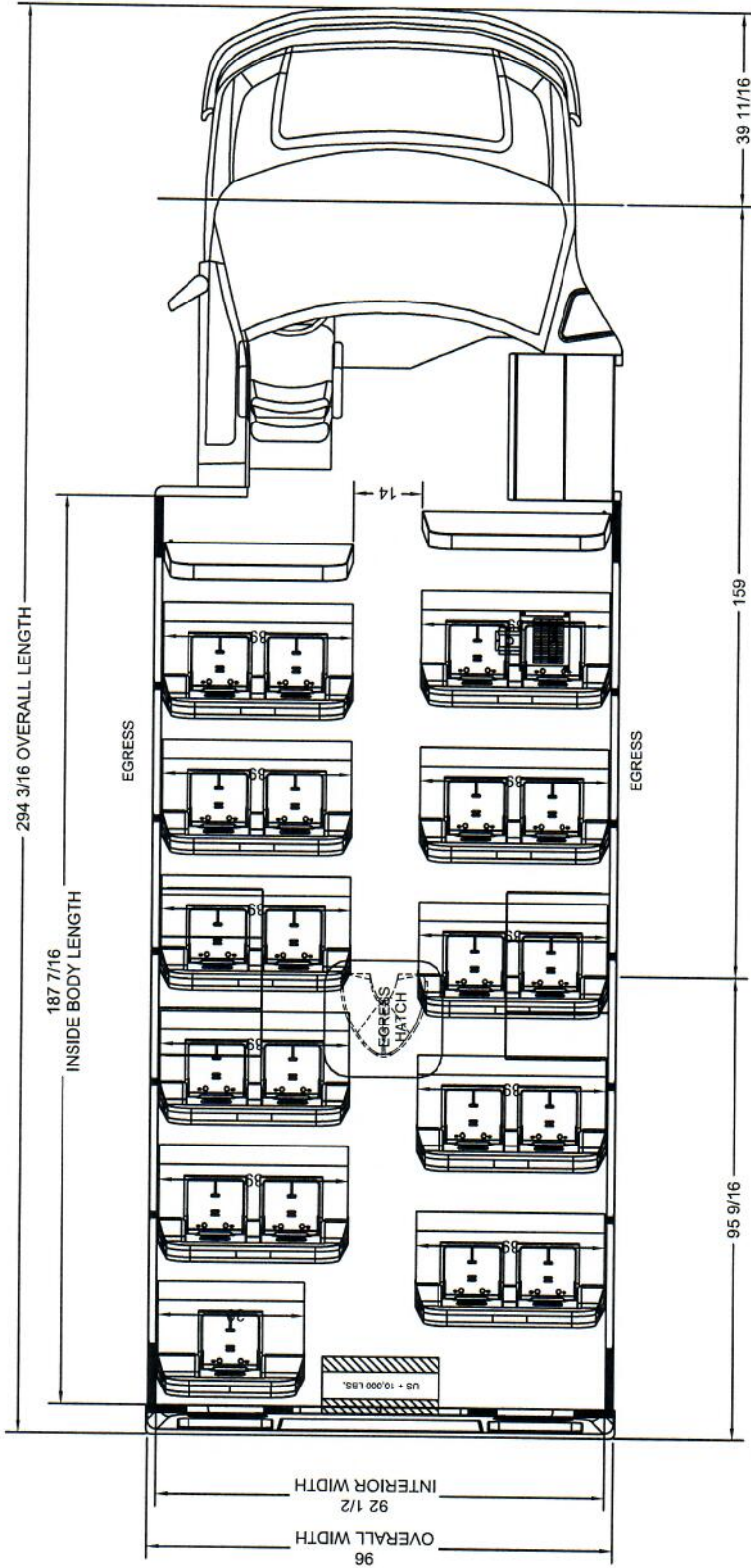
DIMENSIONS

OVERALL HEIGHT - 115"
OVERALL WIDTH - 96"
OVERALL LENGTH - 290"
PASSENGER COMPARTMENT - 184"

DEALER APPROVAL

APPROVED

CUSTOMER SIGNATURE



FLOORPLAN SHOWS LOCATION OF OPTIONAL ROOF HATCH AND EGRESS WINDOWS. SEE SALES ORDER FOR INFORMATION.

SEAT SPACING:	R32" L23"	SEATED CHAIRS	32	W/C CHILDREN	-
KNEE SPACING:	R27" L24"	SEATED KIDS	22	PASSENGER CAP:	32

THIS DRAWING AND THE INFORMATION THEREON ARE THE EXCLUSIVE PROPERTY OF STARCRAFT BUS, A DIVISION OF FOREST RIVER, IT SHALL NOT BE COPIED OR DUPLICATED IN ANY MANNER, NOR SHALL IT BE SUBMITTED TO OUTSIDE PARTIES FOR EXAMINATION WITHOUT OUR WRITTEN CONSENT. IT IS LOANED FOR USE WITH REFERENCE TO WORK UNDER CONTRACT WITH, OR PROPOSALS SUBMITTED TO STARCRAFT BUS, A DIVISION OF FOREST RIVER.

CHEVY/GMC 14,200 GVWR

SCALE IN INCHES



STARCRAFT BUS
 a division of Forest River, Inc.

TOLERANCE UNLESS OTHERWISE SPECIFIED

WOOD	OTHER
+ 1/8"	+ 1/16"
+ 1°	+ 1/2°

TITLE: 159" WHEEL BASE - 6 SECTION DUAL WHEEL PRODIGY STANDARD FLOOR
 DATE: 8/29/11
 NAME: VJC
 DWG. NO. 31-95-A-154

BY	CHK	DATE	ECN No.	DESCRIPTION OF CHANGE

2017 CHEVROLET / STARCRAFT 28 PASSENGERS

CHASSIS

2017 CHEVROLET
159" WHEELBASE
6.0L V8 GASOLINE ENGINE VORTEC 342HP
6-SPEED AUTOMATIC TRANS. W/OVERDRIVE
POWER STEERING
TILT STEERING
CRUISE CONTROL
POWER BRAKES W/4 WHEEL ABS
DISC FRONT / REAR BRAKES
BRAKE WARNING LIGHT
FRONT STABILIZER BAR
DRIVE LINE GUARDS
4,300 # FRONT AXLE CONSTRUCTION
4,300 # FRONT SPRINGS - COIL TYPE
8,600 # REAR AXLE
8,600 # REAR SPRINGS - PARABOLIC TYPE
12,300 # GVWR
FRONT & REAR SHOCK ABSORBERS
6 - LT225/75R16D ALL SEASON RADIAL TIRES
16.0 X 6.5 STEEL DISC WHEELS
DUAL REAR WHEELS MUD & SNOW
HEAVY DUTY COOLING
220 AMP ALTERNATOR
DUAL BATTERIES
33 GALLON FUEL TANK
HEAT SHIELD - FUEL TANK
HALOGEN HEAD LAMPS
DAYTIME RUNNING LIGHTS
DUAL ELECTRIC HORNS
AUTOMATIC RESETTING CIRCUIT BREAKERS
SCHOOL BUS CHASSIS EQUIPMENT
TINTED / SHADED WINDSHIELD
TINTED DRIVERS WINDOW
FRONT HEATER / DEFROSTER
DRIVERS SUN VISOR
2 - SPEED INTERMITTENT WIPERS
HIGH BACK DRIVER SEAT - GRAY CLOTH INSERT
ARMREST ON DRIVER DOOR & RH OF DRIVER
(2) 12 VOLT POWER SOCKETS
SPEEDOMETER / ODOMETER
VOLTMETER / FUEL LEVEL GAUGES
OIL PRESSURE / WATER TEMP. GAUGES
FRONT IN DASH AND REAR FLUSH MOUNT AIR
CONDITIONING, TOTAL 55,000 BTU

BODY

2017 STARCRAFT QUEST - 5 - ROW BODY
FMVSS SCHOOL BUS CONSTRUCTION
76" HEADROOM OVER PLYWOOD FLOOR
ENTRANCE AREA HAND RAIL STAINLESS STEEL
ELECTRIC POWERED OPEN-OUT ENTRANCE DOOR
REAR EMERGENCY DOOR WITH LOWER GLASS
LOWER RETAINER FOR REAR EMERGENCY DOOR
OVERHEAD DRIVER STORAGE COMPARTMENT
STATIC ROOF VENT FRONT CENTER
INSULATION COMPLETE 1.5"
ALUMINIZED INNER PANELS
3 - SIDE RUB RAILS INCLUDING SNOW LOWER RAIL

BODY

FULL BODY UNDERCOATING
TINTED TEMPERED SIDE AND REAR WINDOWS
BLACK WINDOW FRAMES
UNDER SEAT REAR HEATER -65,000 BTU
HEATER CUT-OFF VALVES -UNDER BODY BY
STEPWELL
CLEARANCE / MARKER LAMPS - LED
REAR DIRECTIONAL - 7" AMBER - LED
REAR STOP / TAIL LAMPS -4" & 7" RED - LED
BACKUP LAMPS - 4" CLEAR - LED
SIDE DIRECTIONALS - LED
(4) INTERIOR DOME LAMPS
DRIVER DOME LAMP ABOVE DRIVER
BACK-UP ALARM - 97DB
8 LAMP SEQUENTIAL WARNING SYSTEM
3" BLACK PAINTED BAND AROUND WARNING LIGHTS
AM / FM / CD / RADIO W / CLOCK & 4 SPEAKERS
DOOR SWITCH - STEP WELL LAMP
REAR DOOR BUZZER
LOW PROFILE STROBE LAMP W / PILOT LIGHT
REFLECTIVE STRIPING AT ALL EXITS
REFLECTIVE STRIPING SIDES & REAR END
REFLECTIVE SCHOOL BUS SIGNS FRONT AND REAR
ROOF TOP PAINTED WHITE
(8) 39" DOT HB SCHOOL BUS SEATS W/ LAP BELTS
(2) 30" DOT HB SCHOOL BUS SEATS W/ LAP BELTS
(2) 39" DOT HB BARRIERS
GRAY VINYL UPHOLSTERY
ENTRANCE - EMERGENCY DOOR HEADER PADS
5/8" PLYWOOD SUB FLOOR OVER 30 GA. STEEL
GREY FLOOR
GREY PEBBLE STEPS W/WHITE NOSING
FRONT & REAR MUD FLAPS
6" X 16" INTERIOR MIRROR - PADDED EDGE
ROSCO FLAT / CONVEX REMOTE R/VIEW MIRRORS
ROSCO ELLIPTICAL MINI HAWKEYE C/VIEW MIRRORS
HEATED EXTERIOR MIRRORS WITH SWITCH
REFLECTORS AS REQUIRED
ELECTRIC STOP ARM WITH LIGHTS
SAFETY EQUIPMENT FIRE EXTINGUISHER, FIRST AID
KIT, TRIANGLE REFLECTORS, SEAT BELT CUTTER
BODY FLUID KIT
DRIVER DOOR ENTRY STEP
3/16" STEEL REAR BUMPER
CIRCUIT BREAKERS
CHILD REMINDER SYSTEM
NOISE SUPPRESSION SWITCH
WINDSHIELD DEFROST FAN
HOODS OVER 8 WAY LIGHTS
16 LAMP LIGHT MONITOR
CROSSING GATE WITH INTERRUPT SWITCH
PADDED SHOULDER RAILS
DUAL ENTRANCE DOOR HANDRAILS
TRANSPEC ROOF HATCH
FUEL SENDING UNIT ACCESS PLATE
REAR DOOR VANDAL LOCK
SKIRT MOUNTED BATTERY BOX
20 MINUTE SHUT OFF SOLENOID TIMER
(2) EMERGENCY EXITS WINDOWS
WHEELS PAINTED BLACK
WINDOW STOP LINES

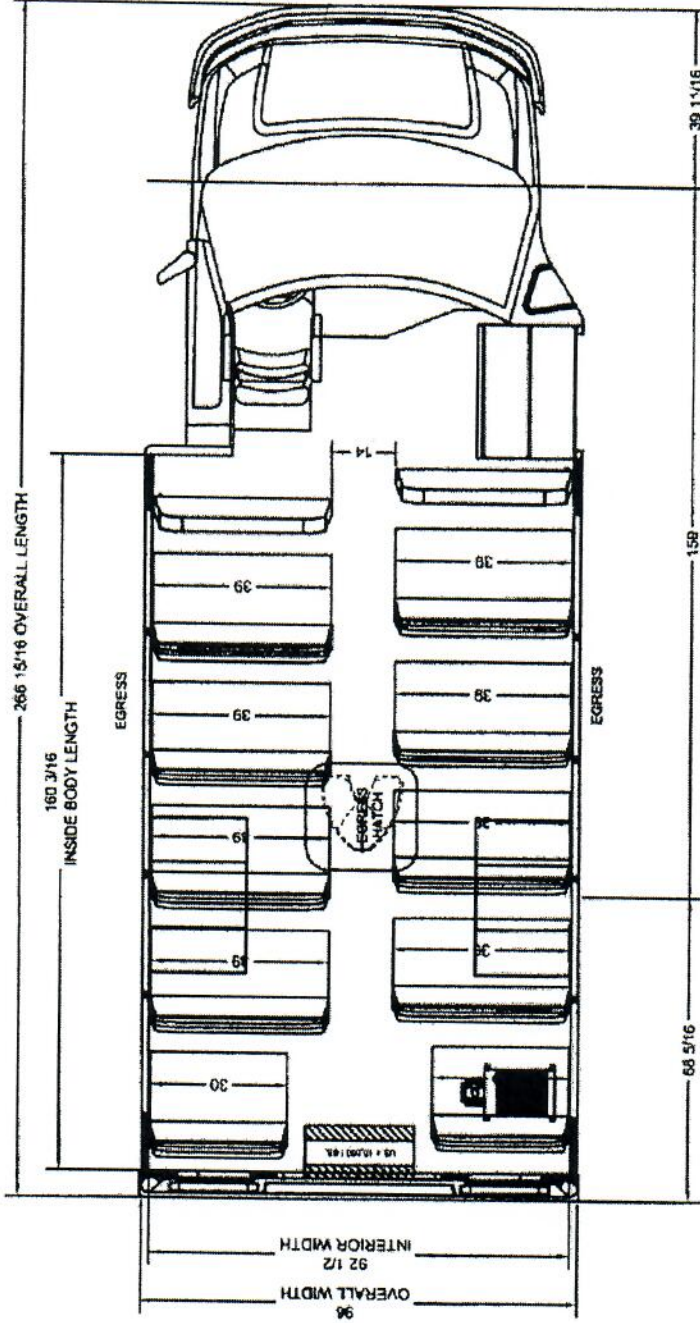
U19-106

C

DEALER APPROVAL

APPROVED

CUSTOMER SIGNATURE



CHEVY/GMC 12,300 GVWR
CHEVY/GMC 14,200 GVWR

SCALE
IN INCHES



FLOORPLAN SHOWS LOCATION OF OPTIONAL ROOF HATCH AND EGRESS WINDOWS SEE SALES ORDER FOR INFORMATION.

34891-34877S

SEAT SPACING:	R28" L28"	SEATED PASSENGER CAP:	26
KNEE SPACING:	R24" L23"	PASSENGER CAP:	26

THIS DRAWING AND THE INFORMATION THEREON ARE THE EXCLUSIVE PROPERTY OF STARCRAFT BUS, A DIVISION OF FOREST RIVER, IT SHALL NOT BE COPIED OR REPRODUCED IN ANY MANNER, NOR SHALL IT BE SUBMITTED TO OUTSIDE PARTIES FOR EXAMINATION WITHOUT OUR WRITTEN CONSENT. IT IS LOANED TO YOU WITH REFERENCE TO WORK UNDER CONTRACT WITH OR FROM PCS&S. SUBMITTED TO STARCRAFT BUS A DIVISION OF FOREST RIVER.

TOLERANCE UNLESS OTHERWISE SPECIFIED	WOOD	OTHER	DATE	BY	CHK	DATE	DESCRIPTION OF CHANGE
± .10"	± .10"	± .12"	1/27/11				

STARCRAFT BUS
A Division of Forest River, Inc.
TITLE: 1237 WHEEL BASE - 132 CYRIN DUAL WHEEL PROCKY STANDARD FLOOR
NAME: JSC
DWS No: 31-69-A-104
SHEET 1 OF 3