



# K-12 Student Services

BOE/Administrative Cabinet Presentation  
November 17, 2025

# Student Services Department Overview

Department member breakdown (by grade level):

- K-4 (Heritage, Prairie, Arboretum)
  - School Counselor, School Psychologist, School Social Worker at each building
  - Arboretum Social Worker add'l duties (4K, Birth-to-3, etc.)
- 5-8 (Intermediate, Middle)
  - 2 School Counselors, 2 School Psychologists, 2 School Social Workers
- 9-12 (High School)
  - 4 School Counselors, 2 School Psychologists, 2.5 School Social Workers
- School Nurses
  - 2.5 District-Wide
- McKinney Vento Social Worker
  - 0.5 District-Wide





## Student Services Department Goal

By the end of the 2026-2027 school year, the Student Services department will help lower the percentage of K-12 students who are **chronically absent** (missing 10% or more of school days) from **13.2%** (2024-2025 school year) to **10%** or less.

---

## K-4 (Heritage, Prairie, Arboretum)

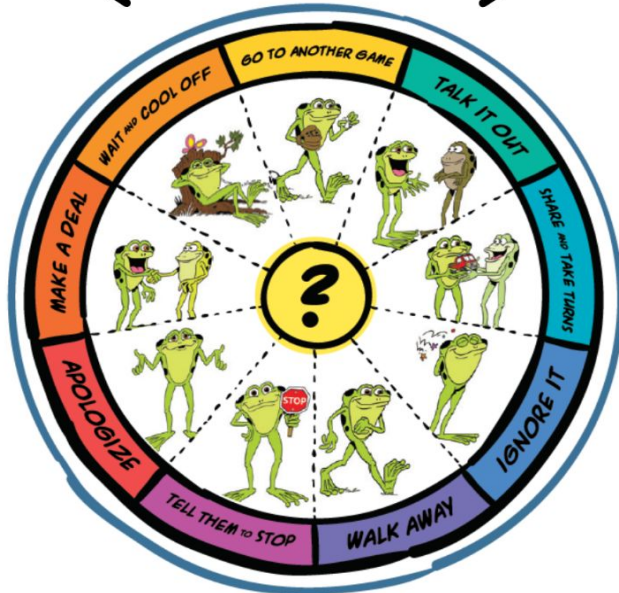


School Counselors:

- Promote equity, access, and academic success for every student
- Teach classroom lessons (descriptions/curriculum topics found [here](#))
- Support additional Tier 1, Tier 2, and Tier 3 SEL systems
- Individual short-term counseling/skill building with students as needed

# K-4 (Heritage, Prairie, Arboretum)

School Counselors (continued):



Supplementary Reproducible E for Elementary Ages



## The ZONES of Regulation

			
<b>Blue Zone</b> Sad Bored Tired Sick	<b>Green Zone</b> Happy Focused Calm Proud	<b>Yellow Zone</b> Worried Frustrated Silly Excited	<b>Red Zone</b> Overjoyed/Elated Panicked Angry Terrified

## K-4 (Heritage, Prairie, Arboretum)

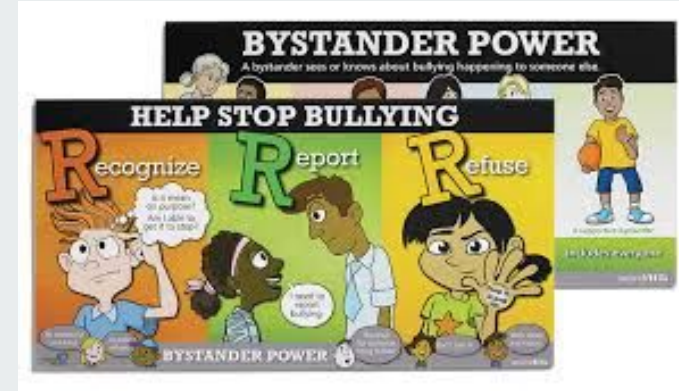
### School Social Workers:

- Crucial link between home/school/community
  - Making community based referrals (student/family)
  - Meeting student SEL needs through collaboration w/ staff/direct work
  - Fostering positive relationships with staff, families and the community
- Creating a safe and welcoming environment through commitment to DEI
  - Participating in district committees
  - Facilitating professional development for staff
  - Advocating for equitable and inclusive school communities



# 5-6 (Intermediate) - Direct Student Services

- Instruction
  - Classroom Guidance
  - All school Assemblies
  - Connect Time
  - Student Ambassadors
  - Social Emotional Learning Small Groups
- Counseling
  - Small Groups
  - Individual Counseling
- Student Social Support
  - UPStairs Social
  - Safe Space



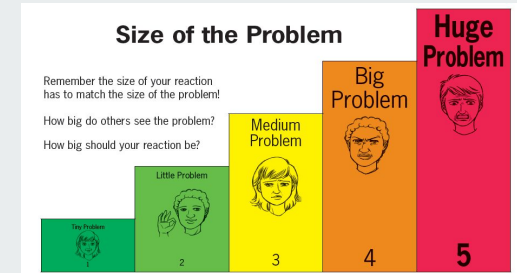
**UPSTAIRS SOCIAL**

**WHAT:** UPSTAIRS SOCIAL:  
A recess alternative

**WHEN:** DAY 1, PERIODS 5, 6 OR 7, When you are dismissed from the cafe for recess

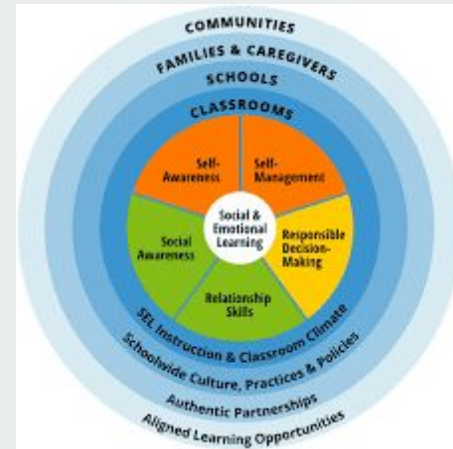
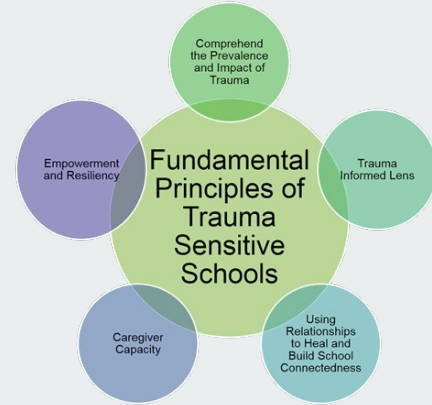
**WHERE:** UPSTAIRS from the cafe.

**WHY:** To get to know other students while playing indoor games and doing arts and crafts



# 5-6 (Intermediate) - Indirect Student Services

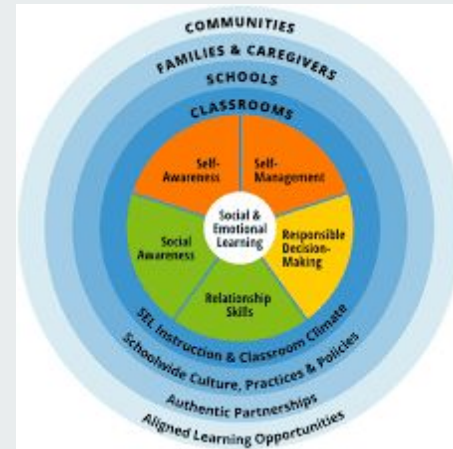
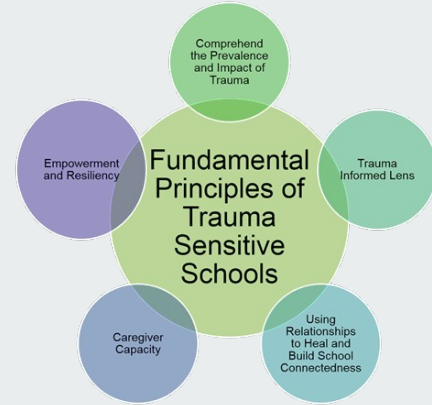
- Consultation and Referrals
  - Trauma Sensitive Schools Training
  - Tier 2 Intervention Committee and Liaison-Teacher meetings
  - Academic and Career Planning Committee
  - Family Referrals
  - Bal-A-Vis-X training
  - Mindfulness announcements and resources
  - Diversity Equity Inclusion Steering Committee
  - Building Bridges
  - Release of Information to obtain and disclose pertinent Information
  - Mobil Problem-Solving Team meetings
  - Social Emotional Learning Team
- Data Driven Practices
  - NextPath entries
  - Mental Health Screener ⇒ SEL Groups
  - Check In/Check Out





# 5-6 (Intermediate) - Indirect Student Services

- Consultation and Referrals
  - Trauma Sensitive Schools Training
  - Tier 2 Intervention Committee and Liaison-Teacher meetings
  - Academic and Career Planning Committee
  - Family Referrals
  - Bal-A-Vis-X training
  - Mindfulness announcements and resources
  - Diversity Equity Inclusion Steering Committee
  - Building Bridges
  - Release of Information to obtain and disclose pertinent Information
  - Mobil Problem-Solving Team meetings
  - Social Emotional Learning Team
- Data Driven Practices
  - NextPath entries
  - Mental Health Screener ⇒ SEL Groups
  - Check In/Check Out



## 7-8 (Middle School)

### School Counselors:



- Academic
  - Study Skills, Organization, Test Taking, Executive Functioning, Student Scheduling
  - Teacher Meetings, Parent Meetings, Student Advocacy, Classroom Lessons
- Social/Emotional
  - Individual Counseling, Small Group Counseling, Classroom Lessons, New Student Transition
  - Universal Screener (7th), Tier 1, Tier 2, and Tier 3 Interventions and Supports
- Career/Post-Secondary
  - Int. School/High School transition, Xello Career Website, Classroom Lessons
  - High School Planning Conferences, Elective Presentations, Clubs/Organizations
- Additional Duties
  - School/District Committees, Master Scheduling, Test Analysis, Attendance/Absenteeism

# 9-12 (High School)

## School Counselors: Universal Services

- Course Registration & Scheduling
- Post-Secondary Planning
- Create & Build Master Schedule
- Mental Health Support
- Collaboration with STC Coordinator to promote work-based learning
- Quarterly transcript reviews for each student & ensure on track for graduation
- Collaboration with administration, case managers, and ELL student services staff
- Psychotherapy Center of Waunakee liaison for all grades
- Tier 1, Tier 2, Tier 3 Supports
- Individual counseling
- Collaboration with families - meetings w/ student & guardians
- Coordinate New Student Day



## 9-12 - School Counselor Scope and Sequence by Grade Level

### 9th Grade

- Freshman First Day
- Meet with all Freshmen
- BESS Screener (9th Grade)
- Future Freshman Night presentation
- Pre ACT Testing

### 10th Grade

- Individual conferences offered for all students and their parents from December through February
- Standardized testing offered (PSAT & Pre ACT)

### 11th Grade

- Junior Parent Night- post-secondary planning with guest speakers
- Madison College information sessions in building
- College Rep. Visits all year
- National ACT Test administered

### 12th Grade

- Summer college application help session
- Post-secondary planning breakout sessions
- College application support - Contact Time sessions & Individual sessions
- Scholarship and Financial Aid presentation
- Madison College application sessions & course registration

## K-12 School Psychologists

School Psychologists:

- 504 Plan evaluations and case management
- Special Education evaluations
- Universal Screener assessment and analysis
- Teacher consultation
- Tier 2 & 3 small groups (executive functioning, social skills, etc.)



## K-12 School Social Workers

School Workers:

- Connecting to resources outside of school
- Mental Health support
- Accessing the Student Financial Assistance Fund
- Applying for Free/ Reduced Lunch





## Families In Transition



## Student Supports

- WCSD supported 44 students who experienced homelessness in 2024-25 through transportation, fee waivers, clothing, shoes, winter gear, gas cards, community resources, etc.
- School social workers provided district-wide training to all staff on identifying and supporting students experiencing homelessness or living in foster care.
- Information about youth homelessness and services available under the McKinney-Vento Act was shared with caretakers and community members through social media and school newsletters.
- In November, Homelessness Awareness Month is coordinated by Sara Zimmerman. Staff showed their support for homeless youth by wearing purple, and awareness was promoted through social media and staff/family newsletters.



# Homelessness Awareness Month





# K-12 School Nurses



## Nursing and Health Services Provide:

- Manage daily health office visits for first aid/illness/mental health symptoms
- Coordinate care for students with chronic and acute health care needs
  - Diabetes, seizures, allergies, asthma, g-tube feedings, colostomy bag care
- Provide staff/coach education and training of chronic/acute health conditions and how to administer emergency medications
- Administer daily, as needed, and emergency medications
- Vision/Hearing screenings
- Immunization management based upon WI School Immunization Laws
- Created and maintain Medical Response Teams in each building
- Case Manage 504 plans and provide input and expertise for health related IEPs



## K-12 School Nurses

District Wide	2023-24 / 2024-25
Number of Office Visits	26,721 / 32,796
Number of students with emergency medications (epipens, inhalers, seizure medication, diabetic medication)	178 / 199
Number of daily medications administered	4968 / 8350
Number of students that received hearing screening	290 / 263
Number of students that received vision screening	1476 / 1465
Number of students who received on-site dental care at school	126 / 157



# **Student Financial Assistance Fund**



# What is SFAF?

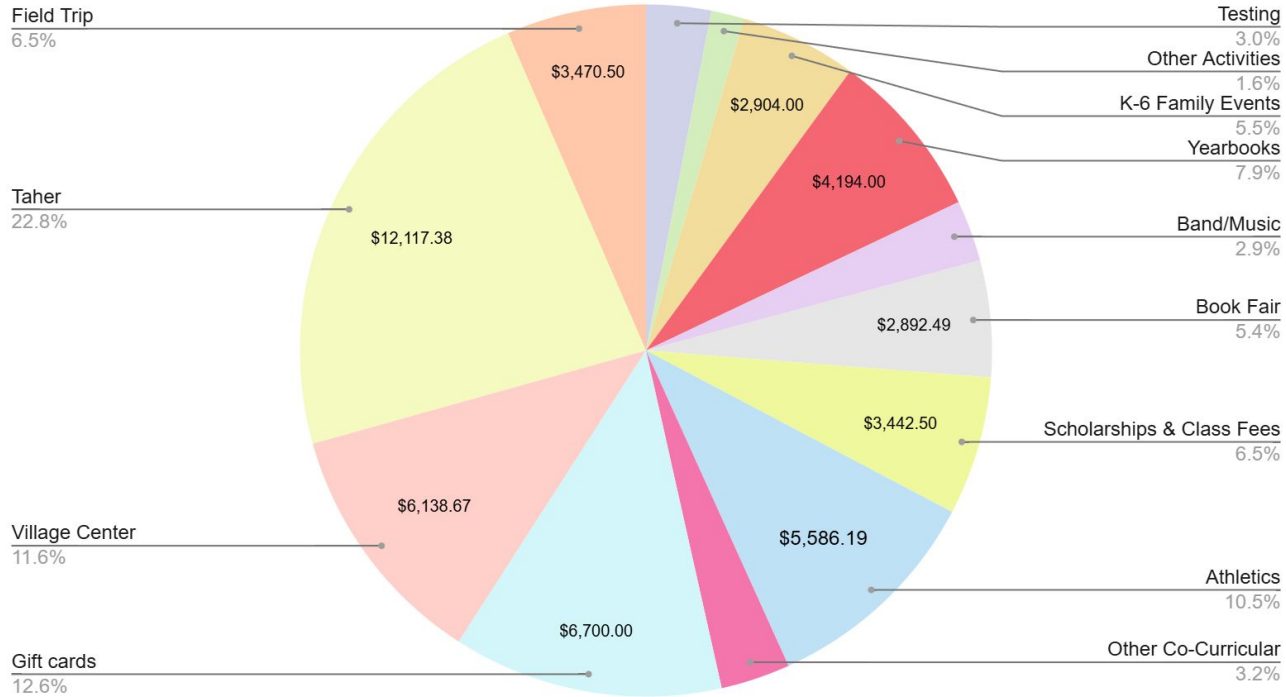
The Committee and Student Financial Assistance Fund is focused on Waunakee students who qualify for free and reduced lunch and families who are experiencing a financial crisis. The fund is made possible by donations from the Board of Education, community members, and local vendors.

Donations are used to fund need-based scholarships for activities such as:

- Food Service assistance
- School-sponsored activities and field trips
- Sports, activity, co-curricular club, and booster fees
- Memory Books/Yearbooks
- Course and AP exam fees
- Field and class trips
- Class and school t-shirts
- Scholarships for graduating seniors
- Gift cards (Walmart, Amazon, and Kwik Trip) for basic needs
- Partnership with the Waunakee Village Center to provide scholarships for students to participate in Village Center activities



# 2023-24 Fiscal Year Spending by Category





# Giving Tuesday Campaign & Funding

- Will share a message with families, staff, and vendors where we provided information about what we've done so far with SFAF and how we continue to grow
- Restart our fundraising goal each school year
- BOE donates \$5,000 annually

## 2025-2026 WCSD Student Financial Assistance Fund



[f Post](#) [t Tweet](#) [</> Embed](#) [in Share](#) [✉ Email](#)

**\$18,590**

Raised

**235**

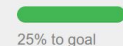
Days remaining

**\$75,000**

Goal

**12**

Supporters



Donate to this campaign:

[\\$10](#) [\\$25](#) [\\$50](#) [\\$100](#) [Other](#)

[Promote this fundraiser](#)



## Contact Information

- Lisa Jondle, Director of Student Services
  - [lisajondle@waunakee.k12.wi.us](mailto:lisajondle@waunakee.k12.wi.us)
- Ty Jury, Middle School Counselor/Department Chair
  - [tyjury@waunakee.k12.wi.us](mailto:tyjury@waunakee.k12.wi.us)