



Athletics Handbook

Students and Parents

Policies, Rules, and Guidelines

The "GCCISD Athletics" student handbook is not intended, and shall not be construed, to constitute a contract between the Goose Creek Consolidated Independent School District and any student; prospective student; agency of the local, state, or federal government; or any other person or legal entity of any and every nature whatsoever. The District hereby reserves and retains the right to amend, alter, change, delete, or modify any of the provisions of this handbook at any time and from time to time, without notice, in any manner that the Administration or the Board of Trustees of the District deems to be in the best interest of the District.



GOOSE CREEK
CONSOLIDATED INDEPENDENT SCHOOL DISTRICT

BOARD OF TRUSTEES

Jim Campisi— President

Richard Clem—Vice President

Tiffany Guy —Secretary

Jessie Martinez—Assistant Secretary

Mercedes Renteria III—Member

Helen Berrott-Tims—Member

Howard Sampson—Member

GCCISD ADMINISTRATION

Dr. Randall O'Brien—Superintendent of Schools

Mrs. Susan Jackson—Deputy Superintendent of Curriculum and Instruction

Dr. Anthony Price—Deputy Superintendent Operations Services

Dr. Matthew Bollinger—Director of Human Resources

Mrs. Carrie Smith—Director of Student Services

GCCISD ATHLETIC OFFICE

Coach Lee Martinez—Director of Athletics

Coach Greg Smith—Assistant Director of Athletics

Mrs. Alondra Lopez—Athletic Secretary

Coach Jaymond Cleveland—GCM Campus Coordinator

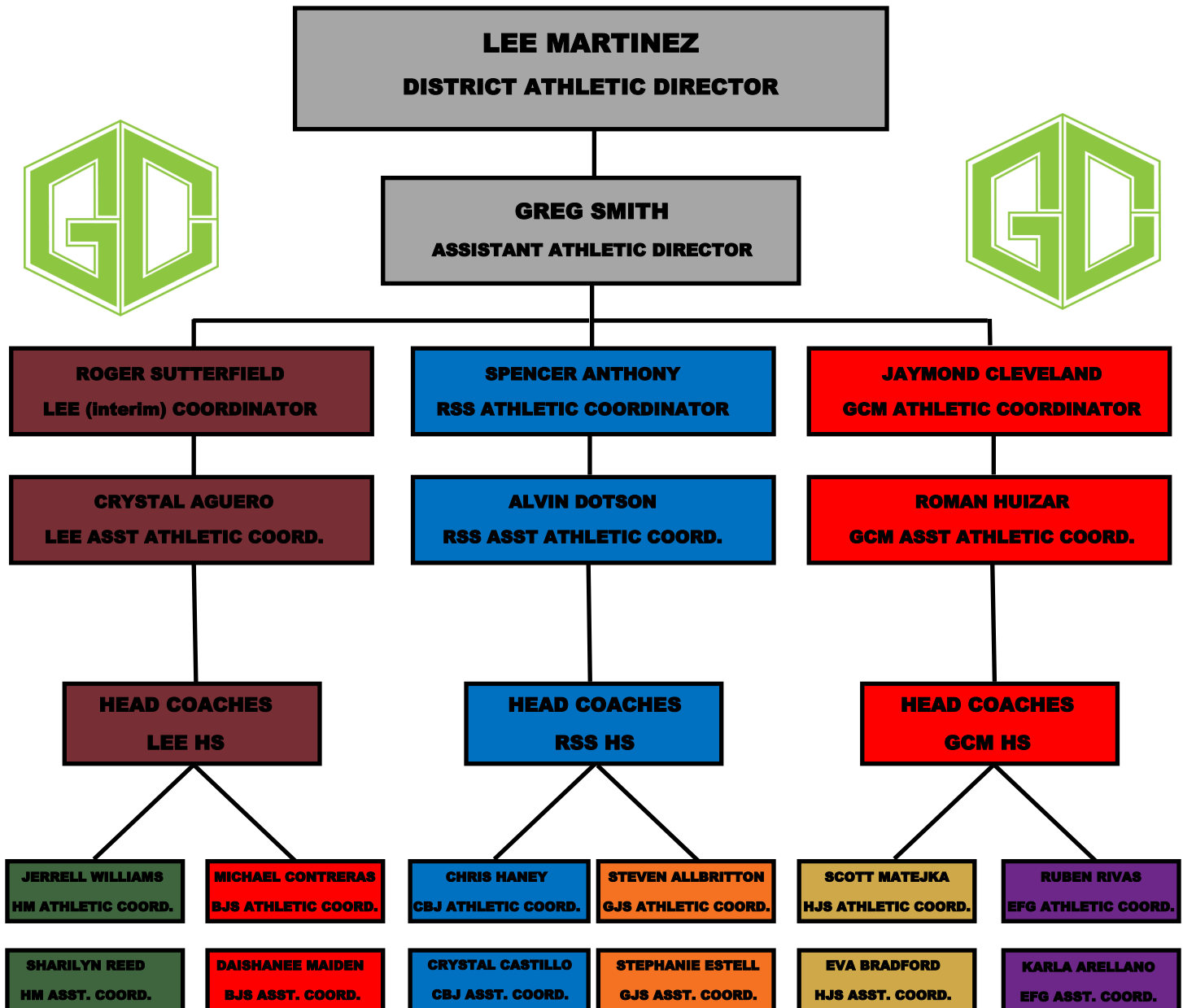
Coach Roger Sutterfield (interim)—Lee Campus Coordinator

Coach Spencer Anthony—Sterling Campus Coordinator

The Goose Creek Consolidated Independent School District does not discriminate on the basis of race, religion, color, national origin, sex, age, or disability in providing education or providing access to the benefits of educational services, activities, and programs, in accordance with federal laws and local

GCCISD Athletics operates side by side under UIL guidelines as well as local policy

ORGANIZATION CHAIN OF COMMAND



PORTRAIT OF AN ATHLETE



ENTHUSIASM

Pride, Passion, Joy
Family Atmosphere
Intense And Eager

COLLEGE READY

Prepared For Life
Ability To Be Successful
Fulfillment Of Dreams

COMPETE

Find A Way To Win
Intensity In Competition
Constantly Learning

COMMUNITY

Service In Community
Pride For School
Making A Difference

ACCOUNTABLE

Responsible For Own Actions
Building Habits Of Discipline
Positive Reputation

2025-2026 GCCISD

UIL ELIGIBILITY CALENDAR

DATE	EVENT	EFFECT ON ELIGIBILITY
August 11	1 st day of school	Students who have successfully completed the previous grade level are eligible (junior high students must have been promoted; high school students must have earned a sufficient number of credits during previous 12 months).
August 29	NO 3-week grade check	No student may regain eligibility during the first six weeks grading period
September 19	End of 1 st six weeks	
September 26	7-day wait period ends	Students GAIN or LOSE eligibility as determined by grades of Sept 19
October 10	End of 1 st nine weeks	
October 10	School Closes for Fall Break	ALL STUDENTS ACADEMICALLY ELIGIBLE AT END OF DAY (thru the end of the break)
October 20	Students Return from Break	Students return to eligibility status of October 10
October 27	7-day wait period ends	Students GAIN OR LOSE eligibility as determined by grades of October 10
November 7	3-Week Grade Check	
November 14	7-day wait period ends	Students re-establish eligibility if passing ALL classes on November 7th grade check
November 21	School closes for Thanksgiving Break	ALL STUDENTS ACADEMICALLY ELIGIBLE AT END OF DAY (thru end of the break)
December 1	Students return from Thanksgiving Break	Students return to eligibility status of November 21
December 5	3-week grade check	
December 12	7-day wait period ends	Students re-establish eligibility if passing ALL classes on December 5
December 19	End of 2nd nine weeks	
December 19	School Closes for Winter Break	ALL STUDENTS ACADEMICALLY ELIGIBLE AT END OF DAY (thru end of Winter Break)
January 7	Students return from Winter Break	Students return to eligibility status of December 19
January 14	7-day wait period ends	Students GAIN or LOSE eligibility as determined by grades on December 19
January 30	3-week grade check	
February 6	7-day wait period ends	Students re-establish eligibility if passing ALL classes on January 30
February 27	3-week grade check	
March 6	7-day wait period ends	Students re-establish eligibility if passing ALL classes on February 27
March 6	End of 3 rd nine weeks	
March 6	School closes for Spring Break	ALL STUDENTS ACADEMICALLY ELIGIBLE AT END OF DAY (thru end of Spring Break)
March 16	Students return from Spring Break	Students return to eligibility status of March 6
March 23	7-day wait period ends	Students GAIN or LOSE eligibility as determined by grades on March 6
April 2	3-week grade check	
April 9	7-day wait period ends	Students re-establish eligibility if passing ALL classes on April 2
April 24	3-week grade check	
May 1	7-day wait period ends	Students re-establish eligibility if passing ALL classes on April 24
May 22	End of 4 th nine weeks	End of School

GOOSE CREEK CISD ATHLETICS

FREQUENTLY ASKED QUESTIONS

If I disagree with my child's playing time, what do I do?

Talk with your child about hard work and the opportunity to earn his/her playing time. Your child needs to speak with the coach to get insight to where improvement is needed.

If I disagree with the coaches strategy, what do I do?

The coach will have full support from the administration with these decisions.

How do I communicate with a coach if I have a concern?

Respectfully, professionally, and with a resolution in mind. If you have a concern regarding your student athlete (not another student athlete), you may call or email that coach to set up a time on his/her conference. Please refrain from an emotional conversation after a contest. It is unacceptable to threaten a coaches job or action outside of your control. Follow the chain of command (see page 3).

How does moving from one school to another impact my child's eligibility to play athletics?

There is a process that needs to take place through the UIL. There is a strong chance he/she will not be varsity eligible for a year depending on the circumstances. Please contact a campus coordinator or athletic office for UIL information.

If I have an issue with any type of unethical behavior regarding a coach, what do I do?

Contact the head coach first. The behavior may have an explanation and may be taken out of context. If this does not solve your issue, your next step would be the campus athletic coordinator. All issues that are reported in any other manner will go directly back to the campus prior to any involvement from the district level.

GOOSE CREEK CISD ATHLETICS

FREQUENTLY ASKED QUESTIONS

Why did my child not receive a letter jacket?

Start by asking your child first. The campus coaches have discretion to who earns a letterman jacket, and the coaches are to communicate this with the student athletes. At that point, they are responsible for going to their fitting which is usually set up during lunches. Many times the athlete misses this fitting and does not communicate to his/her parents.

Will my child receive transportation to and from events?

YES! If you are not given that option, please contact the campus athletic coordinator. As a part of the GCCISD Athletic Philosophy, students will be supervised at all times.

How can I get involved in the booster club?

Contact the head coach. Each program utilizes their own programs. UIL has strict rules that booster clubs need to abide by and the campus coaches have complete control over these programs/clubs.

Does my child need a physical every year?

Yes! The district provides the opportunity for all student athletes to get their physical through their feeder pattern. This will be handled through the campus athletic coordinator and information will be sent out toward the end of each school year.

Where do I purchase tickets for events?

Tickets can be purchased on the GC website: <https://www.gccisd.net/page/Athletics.Ticket>. The ticket prices are set from our UIL district committee.

I don't understand the tryout policy, where do I go?

Contact the head coach. Each program will run their program as they see fit. The decisions made by the campus coaches is final.

PHILOSOPHY OF GCCISD ATHLETICS

The philosophy of Goose Creek CISD competitive sports is to maintain a broad-based program that will afford all students with athletic interests and abilities an opportunity for safe and healthful participation in the sports of their choice. This philosophy is based on the concept that there is a need for physical development and fitness for every student through a variance of interests, abilities, and desires.

The purpose of the athletic program is to teach fair play, sportsmanship, teamwork, and discipline through competition between individuals and schools. A secondary purpose is to promote the hard work that will lead to eventual success. Athletic objectives are below:

1. Provide a positive learning environment for as many students as possible
2. Instill good habits, sound moral values, exemplary citizenship, and a high standard of sportsmanship in the pupils of Goose Creek CISD
3. Encourage students to grow physically, mentally, morally, and socially
4. Develop an appreciation for optimum health and physical fitness by stressing the importance of proper rest, good eating habits, and cleanliness at every opportunity
5. Grow programs in such a manner that unity and success encourages maximum participation at all levels
6. Instill in all athletes the desire to represent their school and community in a manner that will make themselves, school administrators, teachers, parents, and other citizens proud



BEHAVIOR EXPECTATIONS OF SPECTATORS

- Remember that school athletics are a learning experience for students and that mistakes are going to be made
- Remember that you are at the contest to support and yell for your team, and to enjoy the skill and competition, not to intimidate or ridicule the other team or its fans
- Learn the rules of the game, so that you may understand and appreciate why certain situations take place
- A ticket is a privilege to observe the contest, not a license to verbally assault others or be generally obnoxious
- Praise student athletes in their attempt to improve themselves as students, as athletes, and as people, just as you would praise a student working in the classroom
- Show respect for the opposing players, coaches, spectators, and support groups.
- Respect the integrity and judgement of game officials. Understand that they are doing their best to help promote the student athlete, and admire their willingness to participate in full view of the public
- Refrain from the use of any controlled substances before, during, and after the game on or near the site of an event
- Recognize and show appreciation for an outstanding play by either team
- Use only cheers that support and uplift teams involved
- Be a positive role model at events through your own actions and by censuring those around you whose behavior is unbecoming
- *Parents and spectators should be aware that the school can (and should) remove them from the premises and can prohibit them from attending future contests due to undesirable behaviors*
- Game officials can ask that school administrators have unruly fans removed from a contest facility
- There is no such thing as “right” to attend interscholastic athletics. Interscholastic athletics are considered a “privilege” and the spectator who avails themselves of it is expected to conduct themselves accordingly
- Keep in mind that you are a guest of the school, and that while winning is certainly an admirable goal; it is hollow if it comes at the expense of morals, ethics, and values
- The school is responsible for the behavior of their spectators. The school district can be and will be punished for actions of patrons in violation of UIL standards and rules. Often times the harshest penalties imposed by the UIL is a result of the actions of out of control parents



Interscholastic Student Athlete Policies And Agreement

The following general policies shall govern each student/athlete participating in any phase of the Goose Creek CISD interscholastic athletic program

A. Adherence to the University Interscholastic League Constitution and Rules

The student will abide by all rules and regulations of the UIL Constitution and Contest Rules Handbook plus all applicable GCCISD policies and guidelines. Copies of the UIL Constitution can be found online at www.uiltexas.org and each athlete/parent is advised to familiarize him/herself with those rules and regulations

B. Eligibility

The student must meet all of the age, enrollment, attendance, eligibility, and scholastic requirements established by the UIL plus all applicable GCCISD Policies and Guidelines.

C. RankOne Online Medical Information

Before a student participates in any sport including conditioning and practices, he/she must provide the following information to the proper school officials (athletic trainer and/or respective coach):

1. All GCCISD student athletes are required to have a new physical on file prior to summer workouts
2. Emergency Medical Notification Form
3. GCCISD Student/Parent Permission and Participation Form (handbook)
4. Parent & Student Notification Agreement Form, Random Drug Testing Form
5. Sudden Cardiac Arrest Form
6. Concussion Acknowledgement Form

D. Attendance the Day Before, Day of Game, and After a School Contest

A student is expected to attend all school classes, practices, contests, team meetings, and special events. Academics comes first. Head coaches will handle these situations on a case by case basis at their discretion.

E. Care of School Equipment

The athlete is responsible for all equipment issued to him/her. The athlete or his/her parents must pay for stolen/lost or damaged equipment. This becomes a discipline issue and will be handled as a student code of conduct violation.

F. Medical Release to Participate

If an athlete is injured and is seen by a doctor, he/she must have a written doctor's release before he/she can practice or compete in athletic contests. A doctor's written release must be presented to the coach/trainer prior to the practice or contest. Our professional trainers will handle these on a case by case basis at their discretion.

Interscholastic Student Athlete Policies And Agreement

G. Concussion Management

All athletes and their parents must submit a signed form the Athletic Trainer stating that they are aware of the signs, symptoms, and dangers of a concussion (before they can participate) in any practice or competition, during or outside of school hours as required by UIL. Upon a student receiving a concussion, state law requires a protocol with specific steps to be followed by the athlete, parent, and school. Athletes will be in direct contact with the athletic trainer of the campus.

H. Volunteer Coaches

Only currently employed certified teachers for GCCISD can be considered to help as a volunteer coach with high school and middle school programs. Each coach will also have to complete the CPR/First Aid/AED trainings, along with all UIL CCP regulations prior to being able to assist. Please see the athletic department for further information.

I. Exempt Courses

The district considers all courses to be subject to the no-pass no-play rule and will suspend student athletes in extracurricular activities for grades below a 70. However, the district will follow Board Policy on “exempt” courses as advanced placement, international baccalaureate courses, or dual credit courses do not fall into the category of no-pass no-play. Student athletes will follow the local policy regarding exemption waiver protocol as provided by the campus coach.

J. GCCISD Academies

Goose Creek CISD will follow UIL rules as they pertain to the academies (see UIL eligibility and transfer rules) within the district as well as athletic recruiting violations that could alter these decisions. Coaches may not for any reason utilize the academies as a recruiting tool.

UIL: ELIGIBILITY OF STUDENT ATHLETES

The sole purpose of eligibility rules and contest regulations is to keep competition equitable and to maintain activities in proper perspective. It is the responsibility of each school to see that students do not compete unless they comply with all eligibility rules. It is also the responsibility of the student to observe and obey these standards. According to UIL standards, students are eligible to represent their school in interscholastic activities if they:

- have not graduated from high school,
 - are full-time, day students in the school, and have been in regular attendance at the school since the 6th class day of the present school year, or have been in regular attendance for 15 or more calendar days before the contest or competition,
- are in compliance with state law and rules of the Commissioner of Education, (see [TEA-UIL Side By Side](#))
- are enrolled in a four year, normal program of high school courses, and initially enrolled in the 9th grade not more than 4 years ago nor in the 10th grade not more than 3 years ago,
 - were not recruited,
 - are not in violation of the awards rule, and
- meet the specific eligibility requirements for academic, music and/or athletic competition.

UIL participants are eligible to participate in contests during the first six weeks of the school year provided the following standards have been met:

- Students beginning in grades nine and below must have been promoted from the previous grade prior to the beginning of the current school year.
 - Students beginning their second year of high school must have earned five credits, which count toward state high school graduation requirements.
 - Students beginning their third year of high school either must have earned a total of ten credits which count toward state high school graduation credits or have earned a total of five credits which count toward state high school graduation requirements during the 12 months preceding the first day of the current school year.
 - Students beginning their fourth year of high school either must have earned a total of 15 credits which count toward state high school graduation credits or have earned a total of five credits which count toward state high school graduation requirements during the 12 months preceding the first day of the current school year.
- A non-enrolled (home schooled) student seeking participation for the first six weeks in accordance with section 33.0832 of the Texas Education Code must demonstrate grade-level academic proficiency on any nationally recognized, norm-referenced assessment instrument, such as the Iowa Test of Basic Skills, Stanford Achievement Test, California Achievement Test, or Comprehensive Test of Basic Skills prior to the first day of school. A non-enrolled student demonstrates the required academic proficiency by achieving a composite, core, or survey score that is within the average or higher than average range of scores, as established by the applicable testing service. For purposes of this subsection, a school district shall accept assessment results administered or reported by a third party.

UIL: ELIGIBILITY OF STUDENT ATHLETES

A student who receives, at the end of any grading period (after the first six weeks of the school year), a grade below 70 in any class (other than an identified class eligible for exemption) or a student with disabilities who fails to meet the standards in the Individual Education Plan (IEP) may not participate in extracurricular activities for three school weeks (SEE INFORMATION FOR NON-ENROLLED (HOME SCHOOLED) STUDENTS BELOW). An ineligible student may practice or rehearse, however. The student regains eligibility after the seven calendar day waiting period has ended following a grading period or the three school week evaluation period when the principal and teachers determine that he or she has earned a passing grade (70 or above) in all classes, other than those that are exempted.

Each district has the authority to adopt its own grading policy; however, the district must have a measure in place to identify what is passing. This measure is necessary not only for the purpose of determining eligibility for participation in extracurricular activities but also for the award of credit. While districts are not required to assign numeric grades, they must have a way to verify that a student has received the equivalent of a grade of 70 on a scale of 100 in accordance with TAC, §74.26(c).

All schools must check grades for all participants at the end of the first six weeks of the school year. From that point, grades are checked at the end of the grading period whether it is six, nine, or twelve weeks in length. Students who pass remain eligible until the end of the next grading period. All activity coaches and directors are responsible for obtaining official grade reports from the individual the principal designates as the keeper of official grades before the student represents the school. This provision applies to all grading periods. It also applies to all three-school week evaluation periods for ineligible students.

In accordance with Section 33.0832 of the Texas Education Code, the parent or person standing in parental relation to a non-enrolled (home schooled) student participating in a league activity on behalf of a public school must periodically, in accordance with the school's grading calendar, provide written verification to the school indicating that the student is receiving a passing grade in each course or subject being taught.

- All students are academically eligible during a school holiday of a full calendar week or more. When the bell rings to dismiss students for the December holidays, all students are academically eligible until classes resume in January. The same is true for summer recess and fall and spring breaks provided those breaks consist of at least a full calendar week. (See example at the end of this document.)
- Students in year-round schools are academically eligible during inter-sessions.
- If a grading period or three school week evaluation period ends on the last class day prior to a school holiday of one calendar week or more (e.g. spring break, winter holidays), the seven calendar day grace period to lose eligibility and the seven calendar day waiting period to regain eligibility begin the first day that classes resume.

UIL: ELIGIBILITY OF STUDENT ATHLETES

- Students lose eligibility for a three school week period. For purposes of the law, “three school weeks” is defined as 15 class days. Exception: One, but only one of the three school weeks may consist of only three or four class days, provided school has been dismissed for a scheduled holiday period. Two class days does not constitute a “school week” for purposes of this law except Thanksgiving week if schools are on holiday Wednesday, Thursday and Friday. A school district may request an exception from UIL officials to the two-day school week in the event of a disaster, flood, extreme weather condition or other calamity as listed in TEC §42.005. In the event two of three school weeks are shortened, one of the shortened weeks may be counted as five days with ten other actual class days making up the fifteen class days. After the first six weeks of the school year, academically ineligible students in schools with six week grading periods have one opportunity to regain eligibility after the first three school weeks of the grading period; students in a nine week grading period have two opportunities, one at the end of the first three school weeks and one at the end of the first six school weeks. Students who fail to regain eligibility at the evaluation periods remain ineligible until seven calendar days after passing a grading period.

- Note: When computing eligibility calendars, it is helpful to remember that the seven-day grace period after the grading period also contains school week one of the three-school week evaluation period. Also, a seven-calendar day grace and waiting period is always applicable after grading periods and evaluation periods.

Example: School weekends on Friday - Students who are losing eligibility have a seven-calendar day grace period, and students who are regaining eligibility have a seven-calendar day waiting period. Eligibility is lost or regained the following Friday at the time the regular school day ends or would end if that day is a holiday.

Section 5 (b) of the UIL Constitution and Contest Rules defines calendar week as 12:01 am on Sunday through midnight on Saturday.

19 TAC §76.1001 (b) states: The school week is defined as beginning at 12:01 am on the first instructional day of the calendar week and ending at the close of instruction on the last instructional day of the calendar week, excluding holidays.

UIL: RESIDENCE IN SCHOOL DISTRICT AND ATTENDANCE ZONE

This section applies to the first calendar year of attendance in grades 9-12 and to a non-enrolled (home schooled) student seeking participation in accordance with section 33.0832 of the Texas Education Code. Parent(s) in the context of this rule means parents or adoptive parents who adopted the student prior to the student's first entry in the ninth grade.

(a) PRESUMPTION OF RESIDENCE OF STUDENT, PARENT(S), SPOUSE. The residence of a single, divorced or widowed student is presumed to be that of the parents of the student. The residence of a married student is presumed to be that of his or her spouse.

(b) GUARDIAN OF PERSON. If a student's parents are alive but a guardian of his or her person was appointed by appropriate authority and recorded in the county clerk's office more than one year ago, the residence of the student is presumed to be that of the guardian if the student has continuously resided with the guardian for a calendar year or more. If no legal guardianship has been taken out, three years' residence with and support of a contestant establishes guardianship within the meaning of this rule.

(c) GUARDIAN. If a student's parents are dead and a guardian of his or her person has been appointed by appropriate authority, the residence of the student is presumed to be that of the guardian.

(d) Relative; Supporter. If a student's parents are dead and a guardianship of his or her person has not been appointed, the residence of the student is presumed to be that of the grandparent, aunt, uncle, adult brother or sister or other person with whom the student is living and by whom the student is supported.

(e) CUSTODIAL. The residence of a student assigned by appropriate authority to a foster home (or in kinship placement, as provided for in Chapter 264; Subchapter K, Tex. Family Code, in lieu of foster care) or a home licensed by the state as a childcare boarding facility, or placed in a home by the Texas Department of Family and Protective Services, Texas Juvenile Justice Department or an equivalent state agency, is presumed to be at the home or facility to which the student has been placed. If a student's parent(s) move the student to a foster home in another school district, the student is not eligible, but may apply for a waiver. The residence of a student placed in a home or residential facility that is affiliated with a special purpose school district as outlined in Section 11.351 of the Texas Education Code is presumed to be at the special school district-affiliated home or residential facility where the student is placed.

(f) DIVORCED PARENTS. The residence of a student whose parents are divorced is presumed to be that of either parent.

UIL: RESIDENCE IN SCHOOL DISTRICT AND ATTENDANCE ZONE

(g) SEPARATED PARENTS.

(1) If a student's parents separate (and are not divorced), and if one parent remains in the attendance zone where the student has been attending school, the student's residence is presumed to be that of the parent who did not move.

(2) If a student transfers to a new school with a separated (but not divorced) parent, the student is ineligible for one calendar year, but may apply for a waiver.

(3) Parents who have been separated for at least the previous three consecutive years would be considered as 'divorced' for purposes of this rule.

(h) **MILITARY PARENT(S).** A student whose parent is active military and receives a permanent change of station to a military base with a special purpose school district, or whose parent has been released into retirement by the Department of Defense for a reason other than a dishonorable discharge and the student enrolls in the special purpose school district on a military base at the student's first opportunity, is considered in compliance with this rule.

(i) **CRITERIA OF RESIDENCE.** The intent of this section is to ensure that unless circumstances fit one of the exceptions above, any relocation of residence is a complete and permanent move for the family. The residence shall be the domicile which is a fixed, permanent and principal home for legal purposes. The residence is not bona fide under UIL rules unless it complies with all of the following criteria.

(1) Does the student's parent, guardian or other person whose residence determines the student's residence own a house or condominium or rent a house, apartment or other living quarters in the school district and attendance zone? Parents or guardians must provide documentation to verify the purchase, lease or rental of a home located in the new attendance zone. A lease agreement or rental agreement should be for a reasonable duration.

(2) Does the student and the parent or guardian have their furniture and personal effects in the district and attendance zone? There should be no personal effects or furniture belonging to the family in the previous residence.

(3) Does the student and the parent or guardian receive their mail (other than office mail) in the district and attendance zone? The family should have submitted a change of mailing address to the Post Office.

(4) Are the parents or guardians registered to vote in the district and attendance zone? If either of the parents or guardians was registered to vote at the previous address, they should have applied for a new voter registration card at the new address.

(5) Do the parents or guardians regularly live in the district and attendance zone and intend to live there indefinitely? The new residence should accommodate the entire family. The former house should be on the market at a reasonable market price or sold, or the lease or rental agreement terminated. All utilities and telephone service should be disconnected or no longer in the family's name. All licensed drivers in the household should have complied with DPS regulations for changing their address.

(6) Are the parents or guardians required to live in the district and attendance zone for the first calendar year? If the parents or guardians of a contestant move from the district or school zone before the student has been in attendance for one year, the student loses athletic eligibility in the school district from which the parents or guardians move, and remains ineligible there for varsity athletics until a year is up.