



AMARGOSA VALLEY SCHOOLS'

# Board Presentation

2024-2025

presented on 1/16/2025

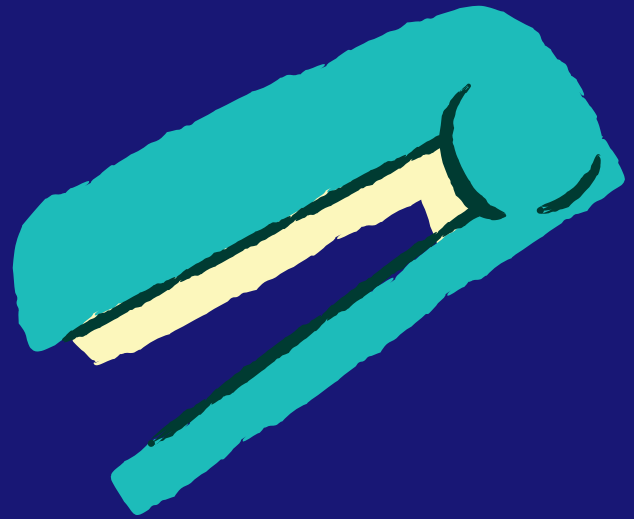




# Table of Contents

In under 5 minutes, you'll discover:

- Something cool you can do with AI as it presents our SSIP
- Our current Star Ratings
- Data!!!-This section talks about where we were a year ago and where we are currently standing.
- And our ultimate goal-educating, supporting, and preparing students for success



# AVS SSIP GOALS

Watch as the AI tool Synthesia's created avatar explains what our ES & MS goals are in our SSIP.



# Star Ratings

Past & Present

2022-23

2023-24

★★★

Elementary School

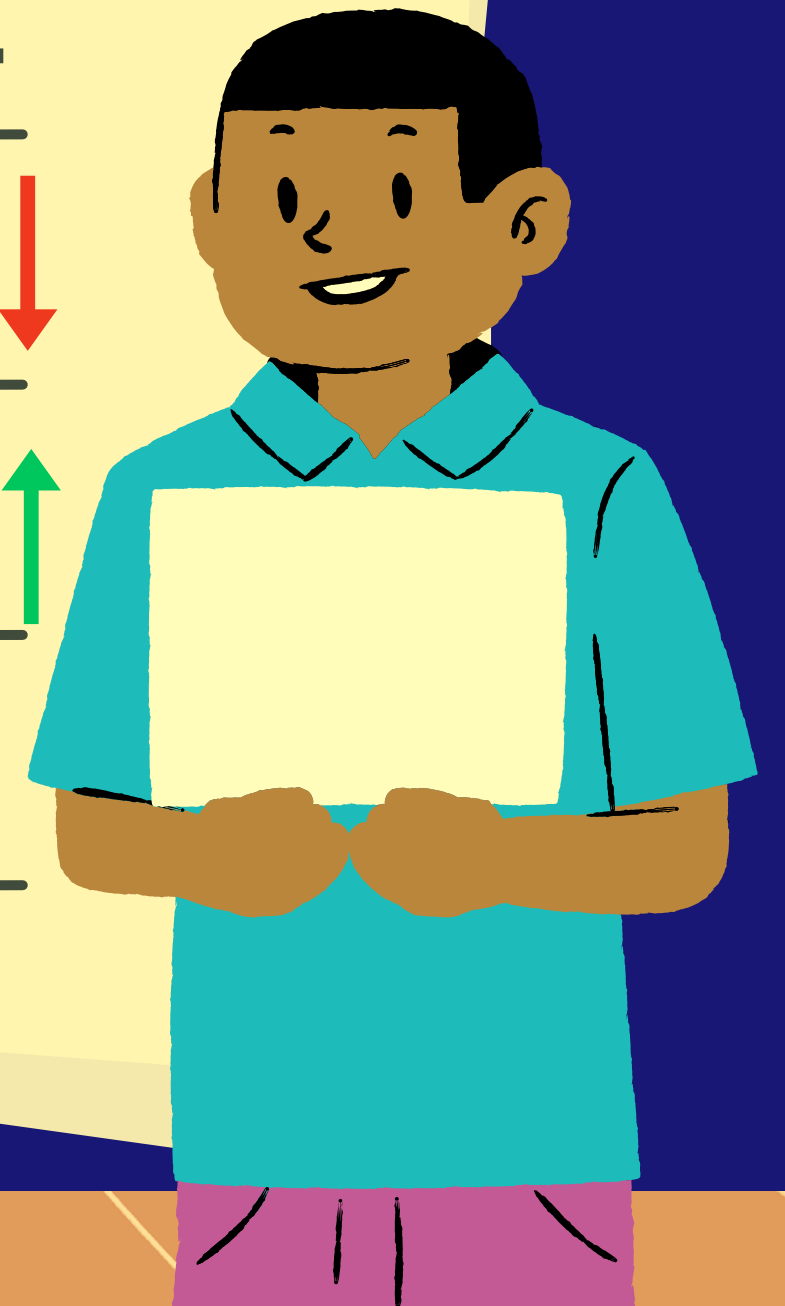
★



★

Middle School

★★★



# Data Collected

## SBAC-ES

2022-23 vs. 2023-24

- ELA proficiency went from 36.8% to **22.2%**.
- Math proficiency went from 31.5% to **13.8%**.

## SBAC-MS

2022-23 vs. 2023-24

- ELA proficiency went from 12.9 to **39.2%**
- Math proficiency went from 16.6% to **7.8%**.

## NWEA -ES

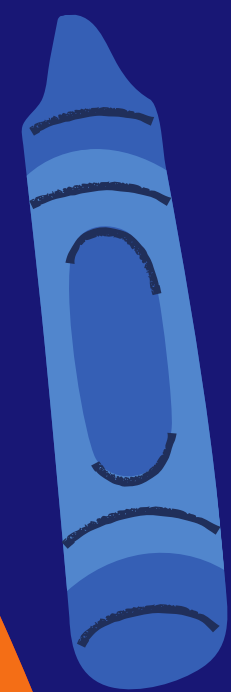
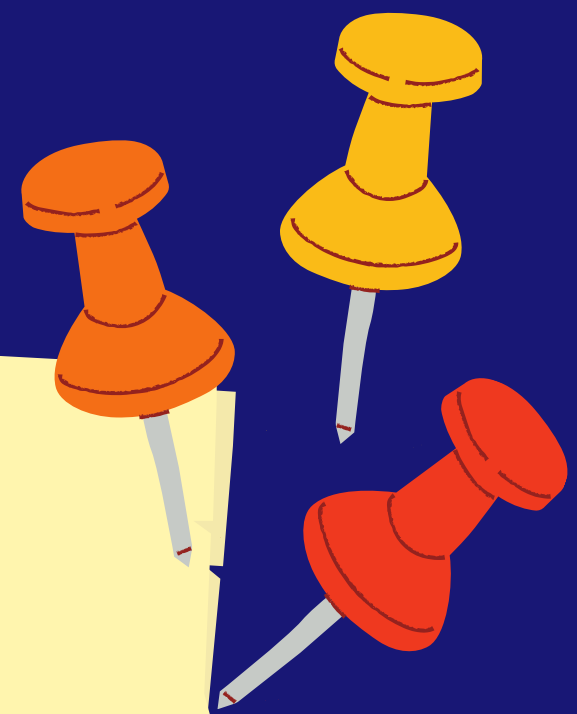
Winter 23-24 vs. Winter 24-25

- Reading proficiency was 26% and is now **33%**. (winter 24-25 roster)
- Math proficiency was 33% and is now **39%**. (winter 24-25 roster)

## NWEA DATA-MS

Winter 23-24 vs. Winter 24-25

- Reading proficiency was 19% and is now **22%** (winter 24-25 roster)
- Math proficiency was 20% and is now **17%** (winter 24-25 roster) however achievement overall is higher with the average being **33** this year compared to 28 last year.



# Shrinking the Lowest Two Brackets

MS

Winter 23-24 to Winter 24-25 for Math and Reading, we **shrunk the two lowest performing brackets** from 70% to 59% in Math and for Reading we went from 66% to 54%!

ES

Winter 23-24 to Winter 24-25, we **shrunk the two lowest performing brackets** in Math from 42% to 38% and for Reading from 52% to 48%.



# What are We Doing?

## **FOCUSING**

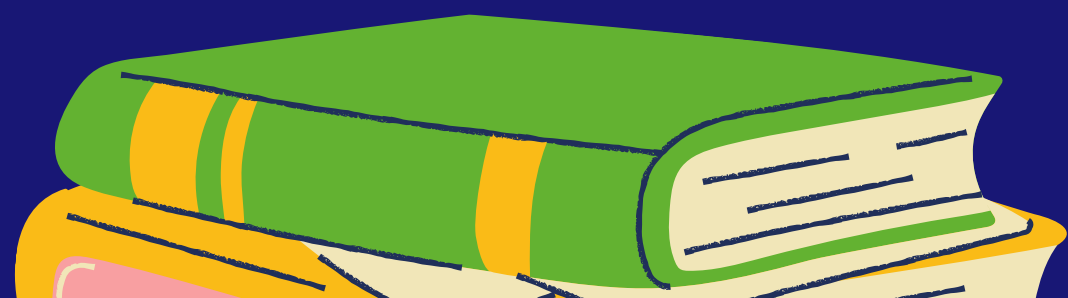
Data is analyzed from assessments to determine areas of greatest need and drill down to the skills that are needed to build mastery of the essential standards identified by the district. The video stated our specific goals for each subject area.

## **ASSESSING IN-HOUSE**

Starting with this quarter, we are going to be implementing in-house reading and writing assessments, targeting the skills and abilities in the essential standards and focused on vertical alignment.

## **BUILDING SKILLS**

Utilizing information gleaned from the analysis of data, we are working to build skills in our teachers, which include EL strategies, vocabulary building, and geometry teaching. This semester has our in-house PDs focused on building the skills that will best support our teachers' instruction where our students need it the most!



# Where are we headed?

The video addressed the specific content area goals, by school level, but our ultimate goal is to create an environment which reinforces positive behavior to help educate, support, and prepare students for success in life.





AVES & AVMS

*Thank You*  
**FOR YOUR ATTENTION!**

