

KOEHLE - COPY

LONG TERM PLAN

TROY SCHOOL DISTRICT 30C

JANUARY 18, 2018



LEGATARCHITECTS

SUSTAINABILITY | PERFORMANCE | DESIGN



TROY SCHOOL DISTRICT 30-C

CREATING A ROAD MAP FOR THE FUTURE OF THE DISTRICT

- 1 EXECUTIVE SUMMARY
- 2 LONG TERM PLAN COMMITTEE
- 3 LONG TERM PLAN PROCESS
- 4 RECOMMENDATIONS
- 5 APPENDICES
 - 5.1 SPACE UTILIZATION STUDY
 - 5.2 SITE PLANS
 - 5.3 DISTRICT MAP



The report that follows provides the Troy 30-C Board of Education with a first step in building a comprehensive, long term facility plan. This report emanates from the discussions of a diverse set of stakeholders over particular data including current facility utilizations, enrollment growth, and community development. The stakeholder group included parents, community members, local municipality representatives and staff members. The representative group met separate times to analyze a progressively more complex set of data. In the end, the group returned to the beginning exercise of prioritizing recommendations to meet the needs of projected change within the district. We are grateful for the time and commitment to service of this committee. The report that follows provides our district with a solid foundation in building a comprehensive facility plan.



DR. TODD KOEHL
TROY SUPERINTENDENT

ELAINE COLOMBO
EXECUTIVE DIRECTOR OF FINANCE AND OPERATIONS

RENEE MARSKI
PRINCIPAL, TROY MIDDLE SCHOOL | TROY PARENT

MIKE SCHWARZ
CITY OF JOLIET, PLANNING DIRECTOR

LAUREN BOBURKA
TEACHER, SHOREWOOD ELEMENTARY | TROY PARENT

PAM MAXEY
TROY DIRECTOR OF EARLY CHILDHOOD EDUCATION

KAREN JAMES
VILLAGE OF SHOREWOOD, COMM. DEV. DIRECTOR

JENNIFER PROSISE
TROY PARENT

JERRY BENÉ
TROY BOARD MEMBER | TROY PARENT

KRISTIN CROSS
TROY BOARD SECRETARY

KRISTIN JOHNSON
TROY DIRECTOR OF CURRICULUM AND ASSESSMENTS

BROOKE ALLEN
TROY PRINCIPAL, HERITAGE TRAIL ELEMENTARY

SABRINA PRICE
TROY BOARD MEMBER | TROY PARENT

RON SARVER
TROY EXECUTIVE DIRECTOR OF INFORMATION SERVICES

TIM WOJNAROWSKI
TROY DIRECTOR OF BUILDINGS AND GROUNDS

AARON KLIMA
SHOREWOOD POLICE CHIEF | TROY PARENT

BECKY LYONS
TROY PARENT

SARAH WELLS
TROY TEACHER, HOFER ELEMENTARY

JENNIFER SILVERMAN
TROY TEACHER, TROY MIDDLE SCHOOL

ANNE GMAZEL
EXECUTIVE DIRECTOR OF TEACHING & LEARNING



9.19.2017

Meeting #1

Examine current utilization of buildings.

10.23.2017

Meeting #2

Determine which facilities have the greatest potential for adaptation.

11.06.2017

Meeting #3

Analyze current enrollment and potential growth trends.

12.11.2017

Meeting #4

Review findings and generate recommendations.

1.18.2018

Meeting #5

Summary & review.




9.19.2017

Meeting #1

Examine current utilization of buildings.

Legat Architects conducted a utilization analysis of the seven existing school buildings. Individual spaces have been assessed and classified in regards to their current utilization. Categories include:

SPACE UTILIZATION

-  FULL UTILIZATION
Space used throughout the entire day
-  HEAVY UTILIZATION
Space used by rotating groups throughout most of the day
-  INTERMITTENT UTILIZATION
Space used periodically and/or for small break-out groups
-  UNDER UTILIZATION
Space not regularly used
-  OTHER SPACES
Space not under consideration (private offices/ administration, support spaces, etc.)

Utilization data based on 2017-2018 school year



10.23.2017

Meeting #2

Determine which facilities have the greatest potential for adaptation.

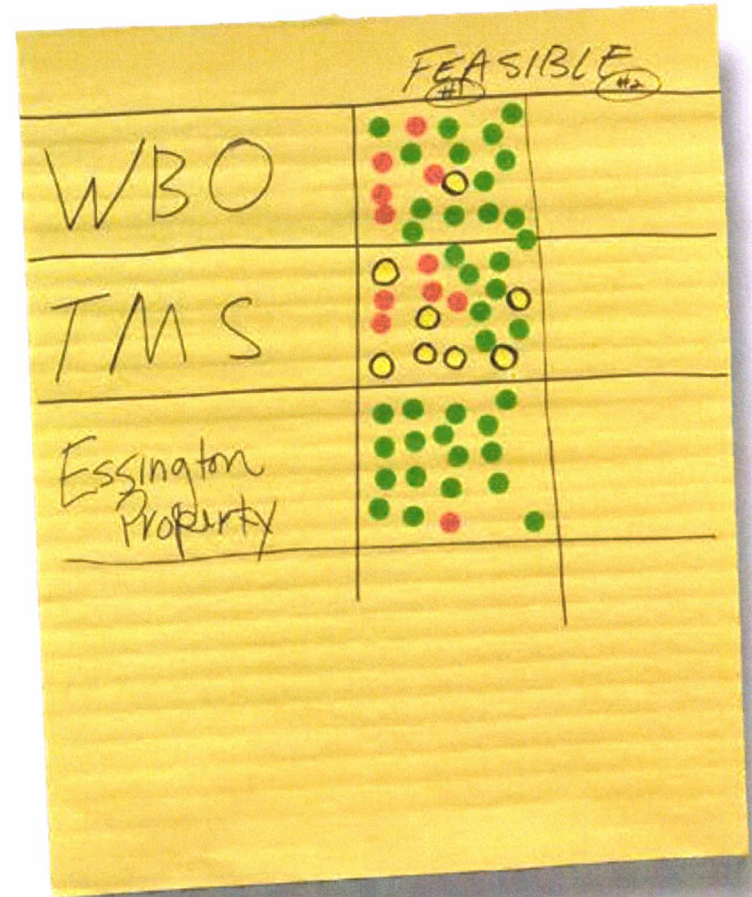
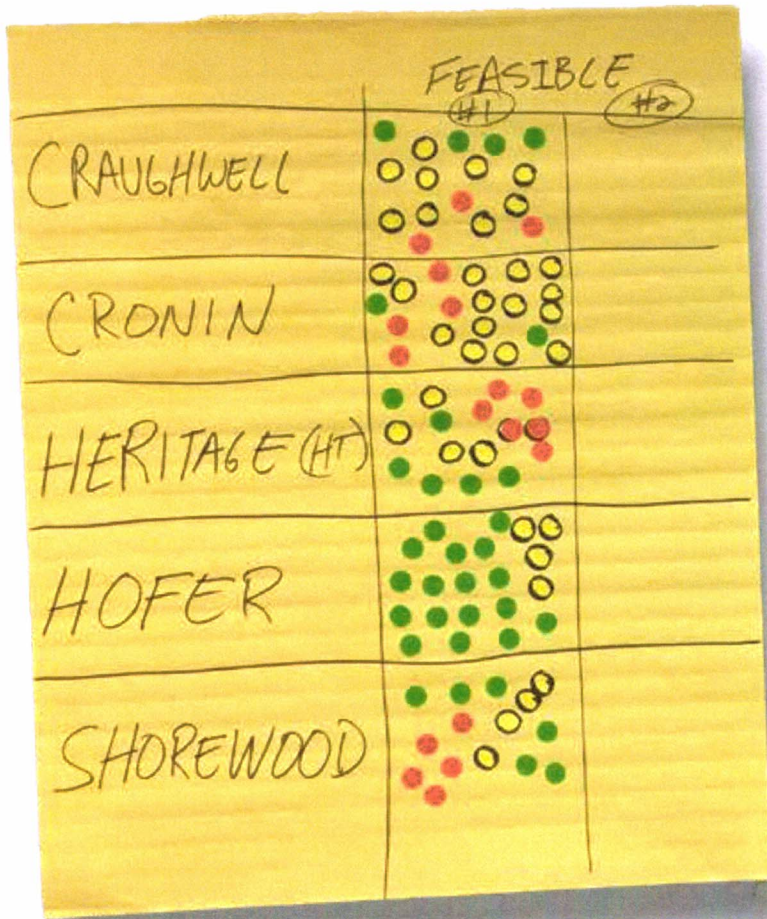
- Brainstorm options and play architect: collaborative design and site analysis session
- Break into small groups to brainstorm
- Report back to large group
- Summarize



Meeting #2



Meeting #2



11.06.2017

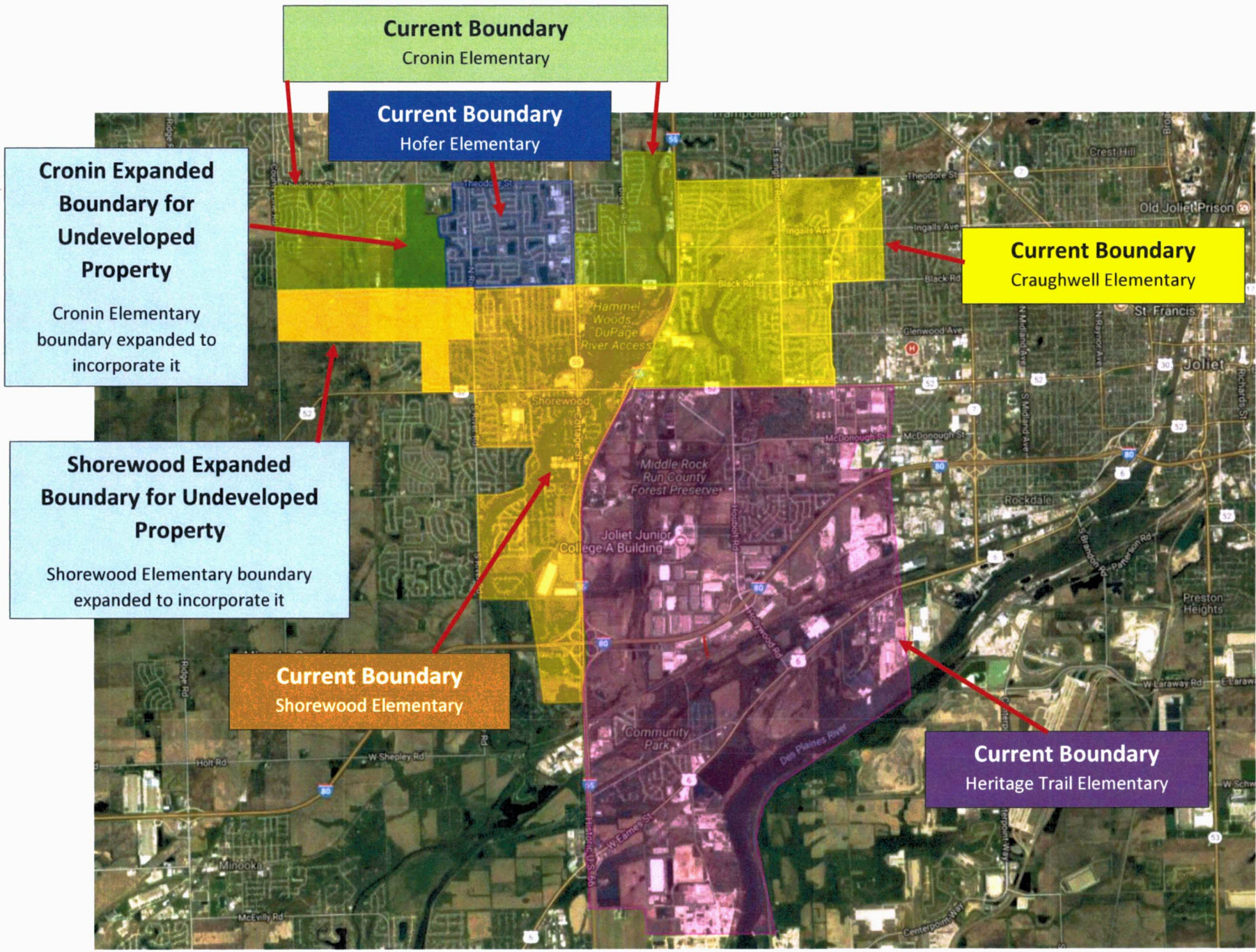
Meeting #3 Subdivision Student Population Data Process

The district determined the student population in projected development using current enrollment data. 5Maps makes it possible for the district to calculate the current number of students in a subdivision by grade level. With available housing data, it is possible to then determine a per house student ratio by dividing the number of students by the number of existing homes.

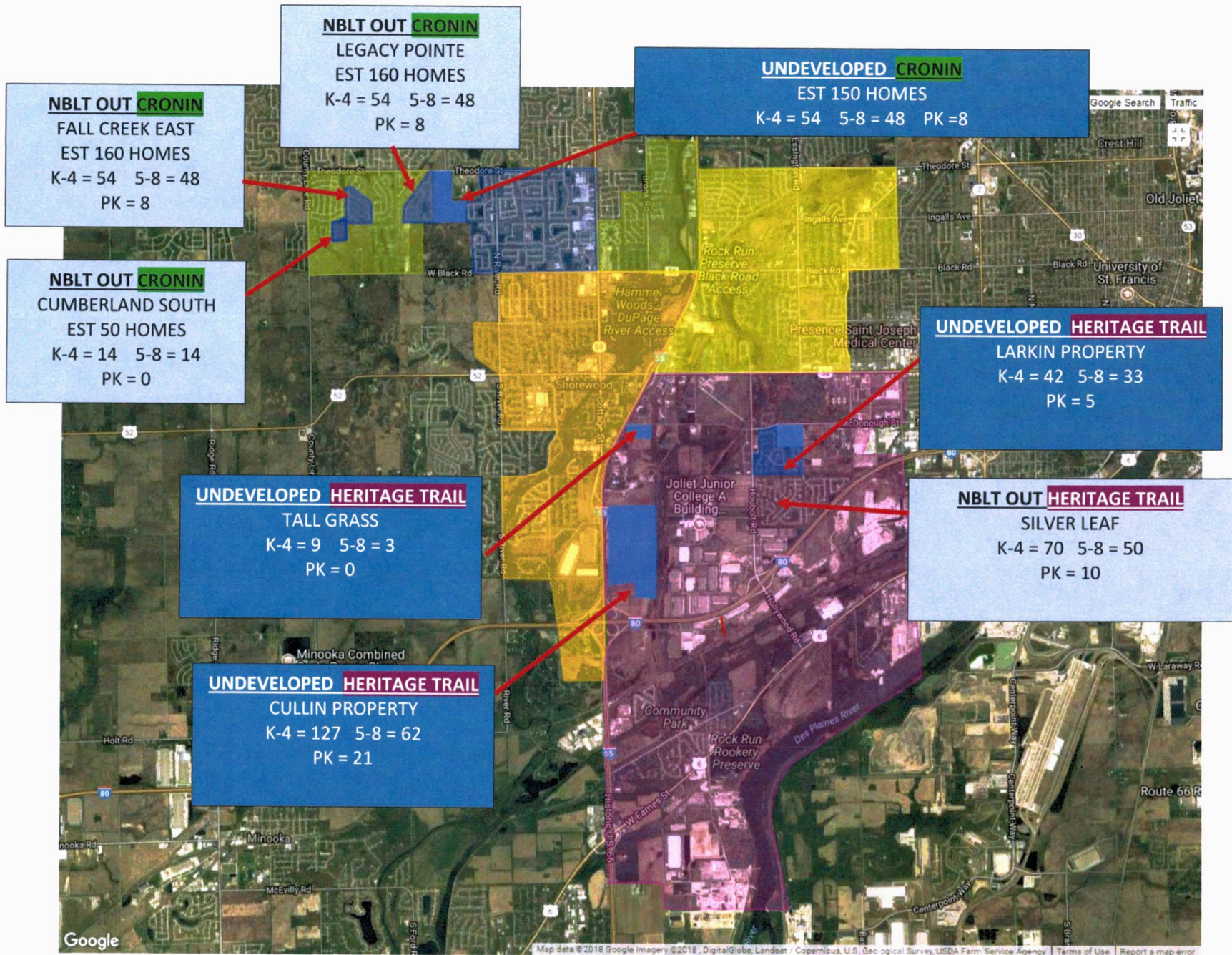
To project future student enrollment, we multiplied the number of vacant or undeveloped lots by the grade level ratio. Three grade level ratios were used:

1. Preschool
2. Kindergarten - 4th grade
3. 5th - 8th grades

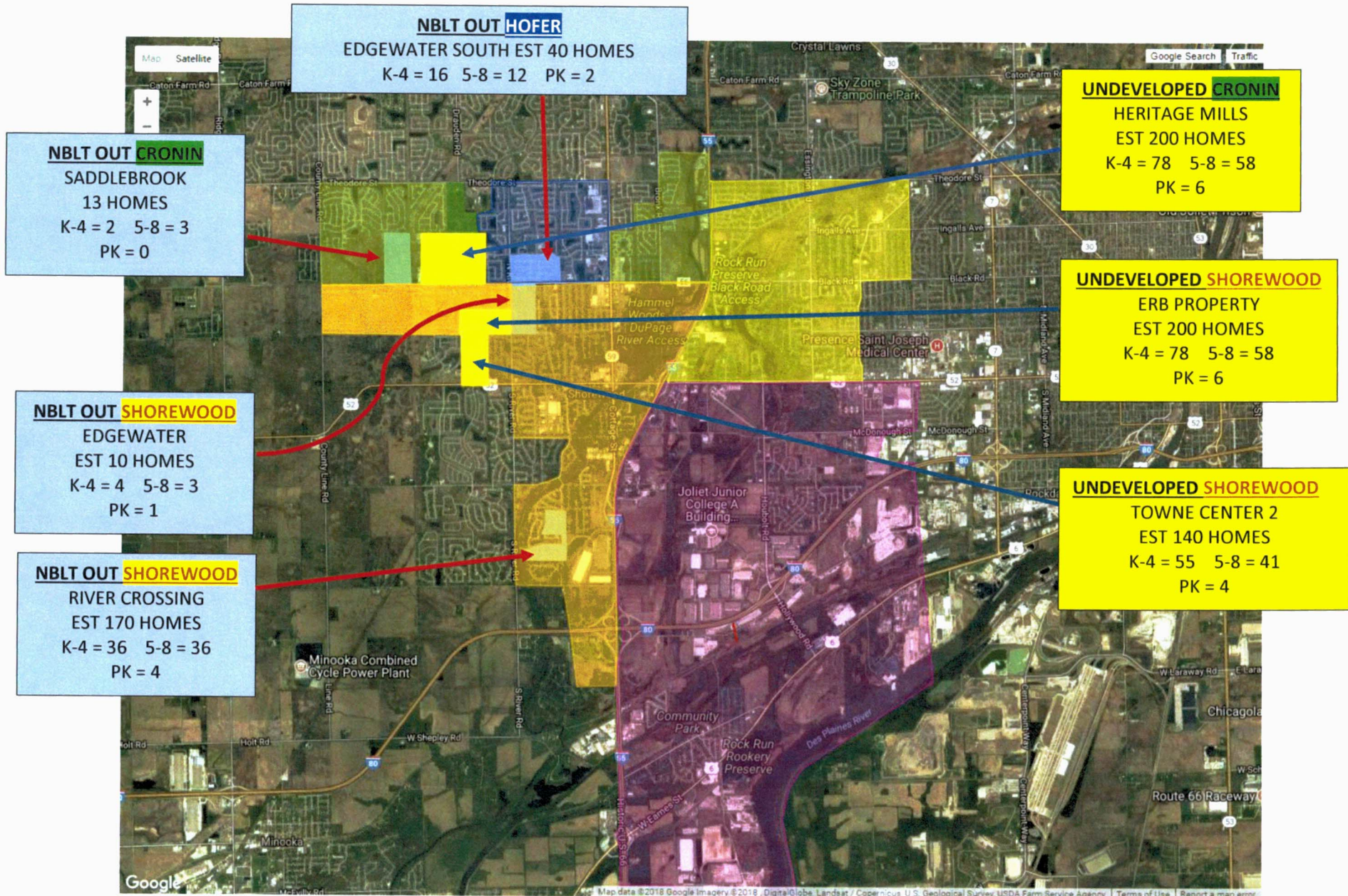




TROY 30-C SCHOOL BOUNDARIES: CURRENT AND EXPANDED TO UNDEVELOPED PROPERTY



JOLIET UNDEVELOPED AND NOT BUILT OUT SUBDIVISIONS WITH SCHOOL BOUNDARIES



SHOREWOOD UNDEVELOPED AND NOT BUILT OUT SUBDIVISIONS WITH SCHOOL BOUNDARIES

Meeting #3

First look at Growth Projections

(updated projections on slide 3.15)

2017-2018	PreK	Kindergarten	1st	2nd	3rd	4th	5th	6th	7th	8th	Total	SF	Standard SF/student	Capacity (Students)	Difference
Craughwell Elementary	4	90	90	82	99	96	0	0	0	0	461	45,982	131	351.0	-110.0
Cronin Elementary	172	82	98	69	96	93	0	0	0	0	610	96,968	131	740.2	130.2
Heritage Trail Elementary	20	81	86	72	81	104	0	0	0	0	444	66,448	131	507.2	63.2
Hofer Elementary	0	86	69	92	90	107	0	0	0	0	444	71,261	131	544.0	100.0
Shorewood Elementary	64	66	72	82	76	88	0	0	0	0	448	52,021	131	397.1	-50.9
Orenic Intermediate	0	0	0	0	0	0	482	480	0	0	962	128,108	164	781.1	-180.9
Troy Middle School	0	0	0	0	0	0	1	0	481	458	940	149,577	164	912.1	-27.9
Total	260	405	415	397	442	488	483	480	481	458	4309			4232.7	-76.3

1% Growth	PreK	Kindergarten	1st	2nd	3rd	4th	5th	6th	7th	8th	Total	SF	Standard SF/student	Capacity (Students)	Difference
Craughwell Elementary	4.0	90.9	90.9	82.8	100.0	97.0	0.0	0.0	0.0	0.0	465.6	45,982	131	351.0	-114.6
Cronin Elementary	173.7	82.8	99.0	69.7	97.0	93.9	0.0	0.0	0.0	0.0	616.1	96,968	131	740.2	124.1
Heritage Trail Elementary	20.2	81.8	86.9	72.7	81.8	105.0	0.0	0.0	0.0	0.0	448.4	66,448	131	507.2	58.8
Hofer Elementary	0.0	86.9	69.7	92.9	90.9	108.1	0.0	0.0	0.0	0.0	448.4	71,261	131	544.0	95.5
Shorewood Elementary	64.6	66.7	72.7	82.8	76.8	88.9	0.0	0.0	0.0	0.0	452.5	52,021	131	397.1	-55.4
Orenic Intermediate	0.0	0.0	0.0	0.0	0.0	0.0	486.8	484.8	0.0	0.0	971.6	128,108	164	781.1	-190.5
Troy Middle School	0.0	0.0	0.0	0.0	0.0	0.0	1.0	0.0	485.8	462.6	949.4	149,577	164	912.1	-37.3
Total	262.6	409.1	419.2	401.0	446.4	492.9	487.8	484.8	485.8	462.6	4352.1			4232.7	-119.3

5% Growth	PreK	Kindergarten	1st	2nd	3rd	4th	5th	6th	7th	8th	Total	SF	Standard SF/student	Capacity (Students)	Difference
Craughwell Elementary	4.2	94.5	94.5	86.1	104.0	100.8	0.0	0.0	0.0	0.0	484.1	45,982	131	351.0	-133.0
Cronin Elementary	180.6	86.1	102.9	72.5	100.8	97.7	0.0	0.0	0.0	0.0	640.5	96,968	131	740.2	99.7
Heritage Trail Elementary	21.0	85.1	90.3	75.6	85.1	109.2	0.0	0.0	0.0	0.0	466.2	66,448	131	507.2	41.0
Hofer Elementary	0.0	90.3	72.5	96.6	94.5	112.4	0.0	0.0	0.0	0.0	466.2	71,261	131	544.0	77.8
Shorewood Elementary	67.2	69.3	75.6	86.1	79.8	92.4	0.0	0.0	0.0	0.0	470.4	52,021	131	397.1	-73.3
Orenic Intermediate	0.0	0.0	0.0	0.0	0.0	0.0	506.1	504.0	0.0	0.0	1010.1	128,108	164	781.1	-229.0
Troy Middle School	0.0	0.0	0.0	0.0	0.0	0.0	1.1	0.0	505.1	480.9	987.0	149,577	164	912.1	-74.9
Total	273.0	425.3	435.8	416.9	464.1	512.4	507.2	504.0	505.1	480.9	4524.5			4232.7	-291.7



Meeting #3



3.11 PROCESS



Meeting #3

Group 1

- Sq Ft of Cronin is skewed because of the old Junior high spaces.
- Trend: 5-8 has higher enrollment #s vs K-4
- Current class sizes appear to be lower than other districts. What is an acceptable class size according to the BoE/district.
- Data Presented assumes equalized growth at each school.
- Data doesn't seem to include students transitioning from private schools.
- Not sure how the common areas (eq. code) configure in the macro S/F standard.

Group #2

1. Growth will happen out West.
2. Most growth will happen w/ Cronin, Hofer & Shorewood.
3. WBO is already beyond capacity, need another building.
4. Cronin has space, but Special Ed will not be a higher capacity.
5. Classroom sizes are NOT equal across district.
6. Pre-school adds throughout the year. Number will increase.
7. Bathroom capacity - opposite sexes use same bathroom.
8. Playgrounds are out of date.
9. Possibly relocate ~~Kindergarten~~ PK
10. Land out West for potential new grade school.
11. Send Craighwell students to Cronin potentially.
12. Number of 4th graders moving into WBO is more than # leaving.



Meeting #3

Group 3

- ★ WBO Tms Campus is at capacity
- No room for growth
- ★ Square footage \neq Instructional Space
Skewed Data
- ★ Possible Program Restructure { Pre-K
Special Education
ELL
- ★ Classroom Addition Impacts
 - More Bathrooms
 - Café space
 - Technology
 - Staff
 - Parking
 - Bus Space
 - Library
 - Etc. Etc. Etc...

Group 4

- 1) How long does it take to get to 10% growth -
5%
10%
15% ?
- 2) Interpret Cronin with caution - Special programs have limits on class sizes - cannot use to capacity
- 3) WBO #s seem inflated considering low elementary #s
 - a) WBO built in 2006 & opened with more than 181.1 students
 - b) When did 131 sq ft / 164 sq ft come into play
 - c) Available home inventory - students move in/out
 - d) Enrollment flat for last 5 years
 - e) Red #s would get priority
WBO - ? maybe not



12.11.2017

Meeting #4

Consensus exercise to generate a prioritized list of recommendations.



Meeting #4

Updated Growth Projections

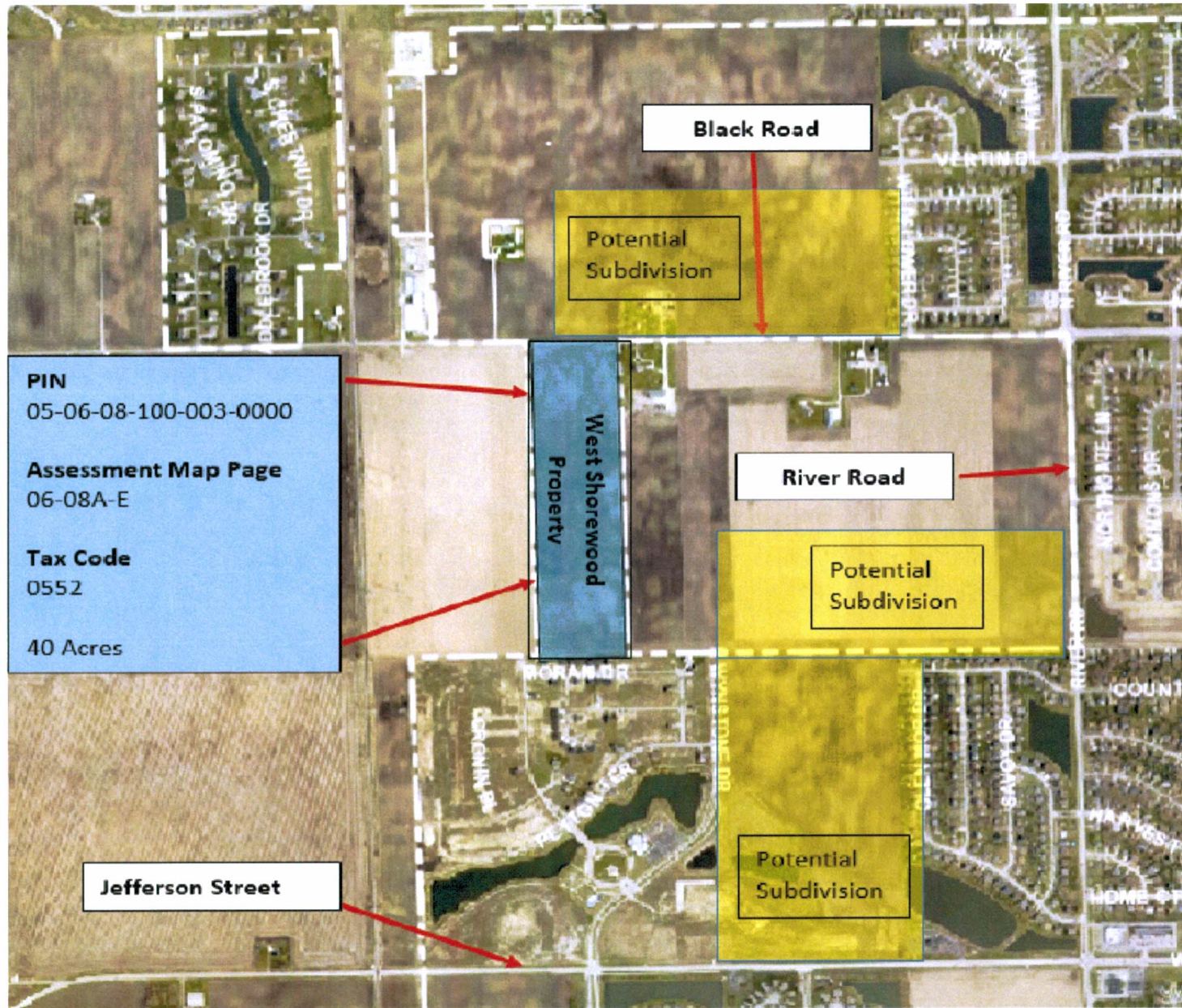
2017-2018	PreK	K	1st	2nd	3rd	4th	ACE	5th	6th	7th	8th	Self			Total	W/ SC	W/ EC	SF	# of all classrooms (R+S+E)	Average Class size	# of regular classrooms (R only)	Average Class Size
												BIL	Cont	EC								
Craughwell Elementary		83	78	82	89	86	22	0	0	0	0	0	18		458	458	458	45,982	29	15.8	23	19.9
Cronin Elementary		75	88	64	78	70	23	0	0	0	0		37	174	398	440	609	96,968	35	11.4	22	18.1
Heritage Trail Elementary		80	82	71	68	91	24	0	0	0	0			20	416	416	436	66,448	26	16.0	21	19.8
Hofer Elementary		89	71	93	79	97	22	0	0	0	0				451	451	451	71,261	30	15.0	22	20.5
Shorewood Elementary		66	71	83	67	75	23	0	0	0	0			69	385	385	454	52,021	25	15.4	19	20.3
Orenic Intermediate		0	0	0	0	0		482	481	0	0				963	963	963	128,108	52	18.5	47	20.5
Troy Middle School		0	0	0	0	0		0	0	480	460				940	940	940	149,577	47	20.0	45	20.9
Total	0	393	390	393	381	419	114	482	481	480	460				4011	4053	4311					
Early Childhood														263					17	15.5		

9 full classroom in use sections are 1/2 day except for HT

1% Growth	PreK	Kindergarten	1st	2nd	3rd	4th	5th	6th	7th	8th	Self			Total	W/ SC	W/ EC	SF	# of all classrooms (R+S+E)	Average Class size	# of regular classrooms (R only)	Average Class Size	
											BIL	Cont	EC									
Craughwell Elementary	0.0	83.8	78.8	82.8	89.9	86.9	0.0	0.0	0.0	0.0	0.0	18.2		462.6	462.6	462.6	45,982	29	15.8	23	20.1	
Cronin Elementary	0.0	75.8	88.9	64.6	78.8	70.7	0.0	0.0	0.0	0.0	0.0		37.4	175.7	402.0	444.4	615.1	96,968	35	11.4	22	18.3
Heritage Trail Elementary	0.0	80.8	82.8	71.7	68.7	91.9	0.0	0.0	0.0	0.0	0.0			20.2	420.2	420.2	440.4	66,448	26	16.0	21	20.0
Hofer Elementary	0.0	89.9	71.7	93.9	79.8	98.0	0.0	0.0	0.0	0.0	0.0				455.5	455.5	455.5	71,261	30	15.0	22	20.7
Shorewood Elementary	0.0	66.7	71.7	83.8	67.7	75.8	0.0	0.0	0.0	0.0	0.0			69.7	388.9	388.9	458.5	52,021	25	15.4	19	20.5
Orenic Intermediate	0.0	0.0	0.0	0.0	0.0	0.0	486.8	485.8	0.0	0.0	0.0				972.6	972.6	972.6	128,108	53	18.5	47	20.7
Troy Middle School	0.0	0.0	0.0	0.0	0.0	0.0	0.0	0.0	484.8	464.6	0.0				949.4	949.4	949.4	149,577	47	20.0	45	21.1
Total	0.0	396.9	393.9	396.9	384.8	423.2	486.8	485.8	484.8	464.6	0.0				4051.1							

5% Growth	PreK	Kindergarten	1st	2nd	3rd	4th	5th	6th	7th	8th	Self			Total	W/ SC	W/ EC	SF	# of all classrooms (R+S+E)	Average Class size	# of regular classrooms (R only)	Average Class Size	
											BIL	Cont	EC									
Craughwell Elementary	0.0	87.2	81.9	86.1	93.5	90.3	0.0	0.0	0.0	0.0	0.0	18.9		480.9			45,982	29	16.6	23	20.9	
Cronin Elementary	0.0	78.8	92.4	67.2	81.9	73.5	0.0	0.0	0.0	0.0	0.0		38.9	182.7	417.9		96,968	35	11.9	22	19.0	
Heritage Trail Elementary	0.0	84.0	86.1	74.6	71.4	95.6	0.0	0.0	0.0	0.0	0.0			21.0	436.8		66,448	26	16.8	21	20.8	
Hofer Elementary	0.0	93.5	74.6	97.7	83.0	101.9	0.0	0.0	0.0	0.0	0.0				473.6		71,261	30	15.8	22	21.5	
Shorewood Elementary	0.0	69.3	74.6	87.2	70.4	78.8	0.0	0.0	0.0	0.0	0.0			72.5	404.3		52,021	25	16.2	19	21.3	
Orenic Intermediate	0.0	0.0	0.0	0.0	0.0	0.0	506.1	505.1	0.0	0.0	0.0				1011.2		128,108	52	19.4	47	21.5	
Troy Middle School	0.0	0.0	0.0	0.0	0.0	0.0	0.0	0.0	504.0	483.0	0.0				987.0		149,577	47	21.0	45	21.9	
Total	0.0	412.7	409.5	412.7	400.1	440.0	506.1	505.1	504.0	483.0	0.0				4211.6							





PIN
05-06-08-100-003-0000

Assessment Map Page
06-08A-E

Tax Code
0552

40 Acres

West Shorewood
Property

Black Road

Potential
Subdivision

River Road

Potential
Subdivision

Jefferson Street

Potential
Subdivision

WEST SHOREWOOD PROPERTY

3.16 PROCESS



Meeting #4

GROUP #1

IA PK & K \Rightarrow CRONIN

1-5 YR.
PLAN

1-4 FROM CRONIN TO:
CRAUGHWELL / H.T.
HOFER / SHOREWOOD ..

IB ESSINGTON PROPERTY:

5-10
YR.
PLAN

PK & K
CENTER

CRONIN BACK TO
1-5 GR. CENTER

IC ESSINGTON PROPERTY:
1-5 GRADE CENTER

WBD: 6TH GR. + DISTRICT OFFICE +
PROFESSIONAL DEV. + TECH.

T.M.S.: 7TH - 8TH GR - EXPAND CAFE & GYM

GROUP #2

Today \Rightarrow Keep on Keeping on!

Future Planning Options

- #1 Turn SH into an EC/DO and build a new elementary building, add on to campus.
- #2 Build new elementary, add on to campus.
- #3 Build EC/DO, Move technology to current DO

① New building
on SH property

② To the West
Property donated
or purchased.

③ Build at
Cronin
or
Anywhere!!

Long Term ...

Explore Campus options



Meeting #4

Group #3 Options

Background

- We ignored the undeveloped property for now
- counted elementary students from NBLTs
 - Cronin - 200
 - HT - 70
 - Hofer - 110
 - Shorewood - 40
 - Craughwell - 0

} No PreK included

Options:

- First consideration → what is our direction w/ Pre-K (has major ripple effect)
- School site in Shorewood (West Shorewood Property) (Koch / Elementary)
- Build both Elementary & Redistrict other elementary schools to relieve above growth
- add Pre-K in each building (approx. 2 classrooms)
- New PreK center either on:
 - Shorewood School site or Essington property
 - Addition on Cronin
- ~~Addition on HT~~
- Addition on Cronin
- Mirrored Property on Essington Property (long term) for Campus 58
- Something with Shorewood (not sure, but needs updates)

Group 4

Recommendations - Option 1

- Build new Campus - Essington Property
- Move 4th grade to Intermediate - 4th-6th Alleviates pressure @ Campus + Elem.
- Possibly shuffle EC/SPED to CR + HF
- Leaving room for 6th Elem. Building

Option 2

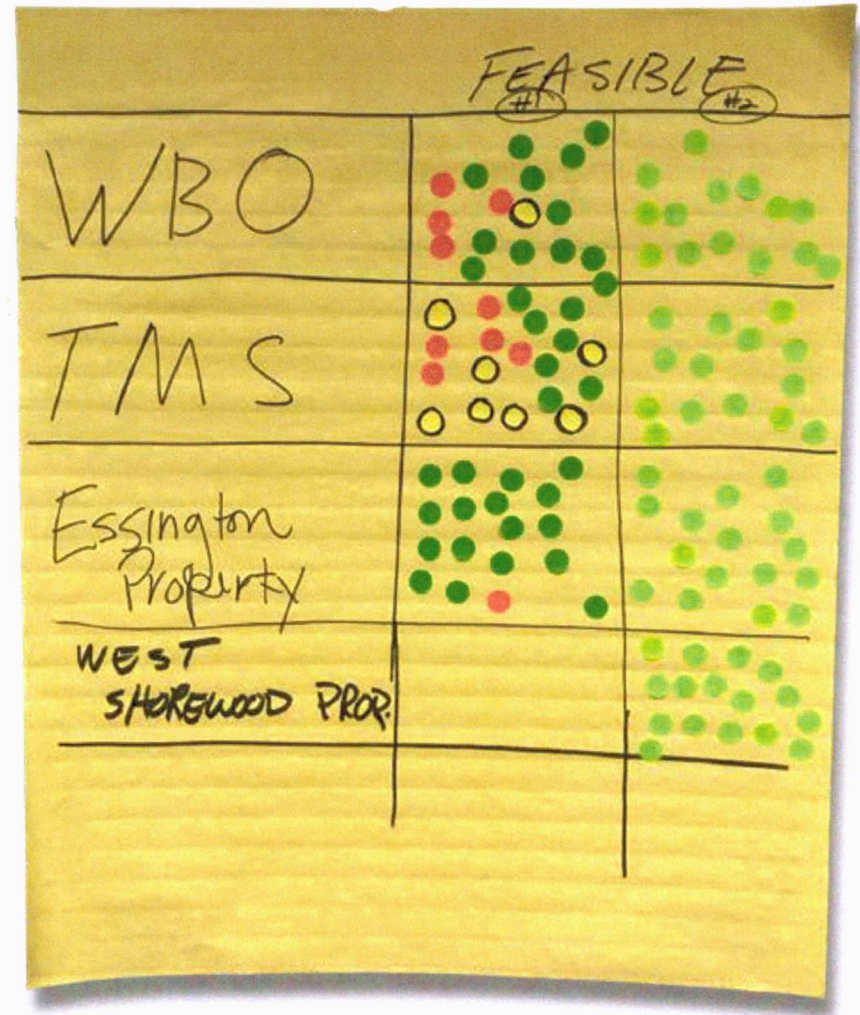
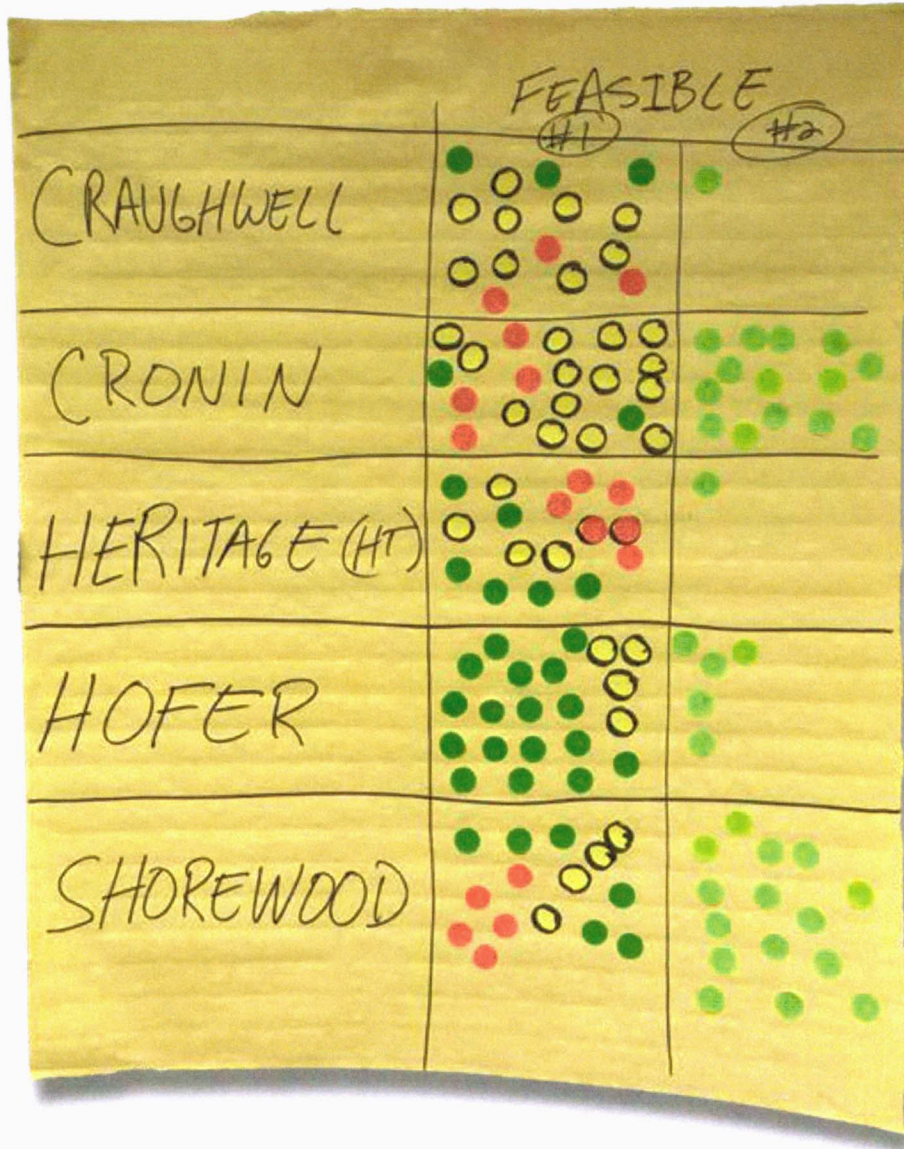
- Build new Elem/EC - ^{SHOREWOOD} Essington Property
- re-district
- Add to current Campus
 - Field House
 - (move DO)
- Add DO + PD center

Option #3

- Option #2 on Essington Property



Meeting #4: second look at feasibility.



Committee Recommendations (not a prioritized list):

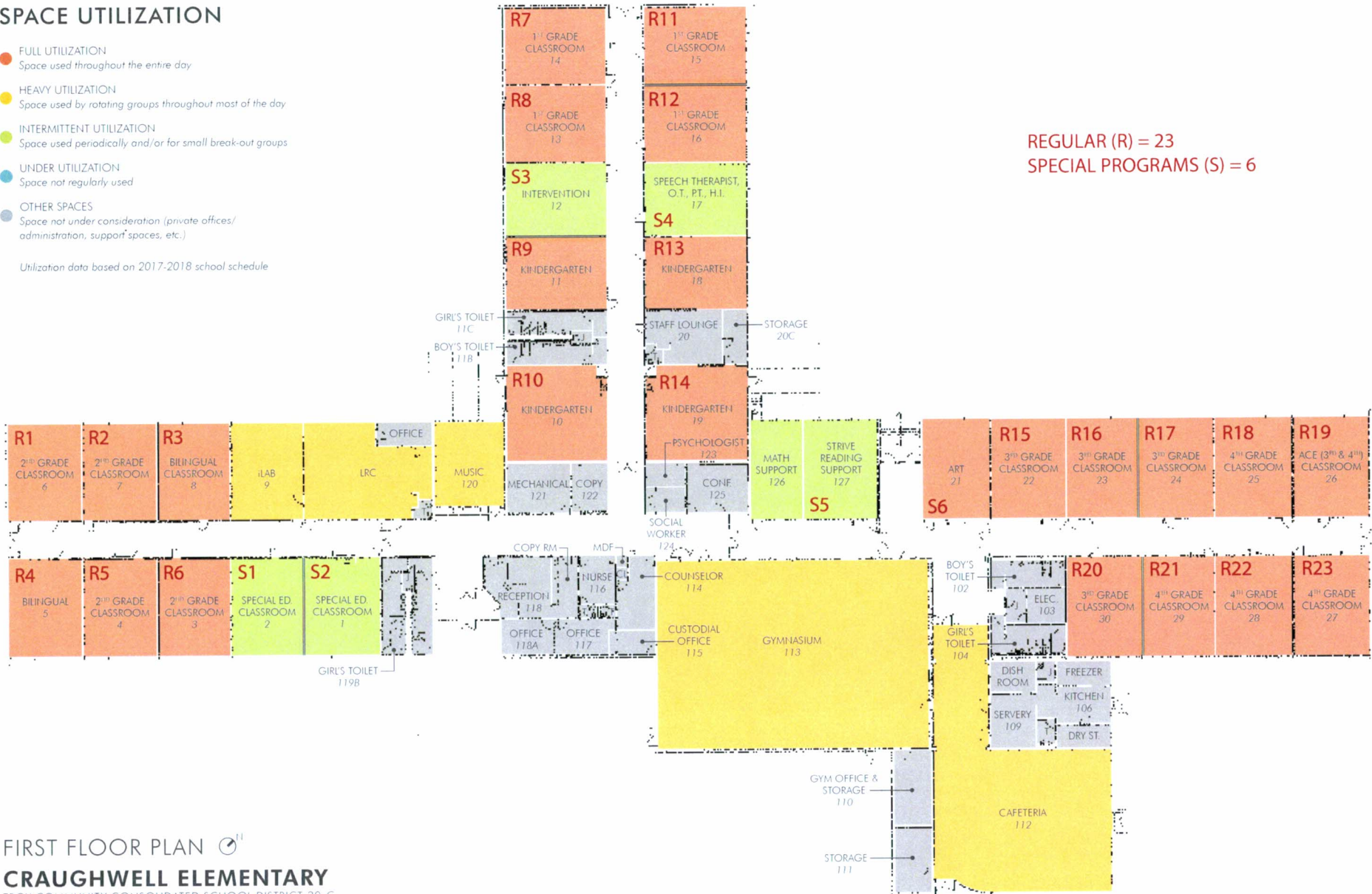
- Finish redistricting by extending boundaries into undeveloped properties.
- Determine direction for size and location of preschool program.
- Consider & evaluate additions at the properties below based on enrollment data as it changes over time:
 - Cronin Elementary
 - Shorewood Elementary
 - Troy Middle School
 - Orenic Intermediate
 - Undeveloped Essington property
 - West Shorewood property.



SPACE UTILIZATION

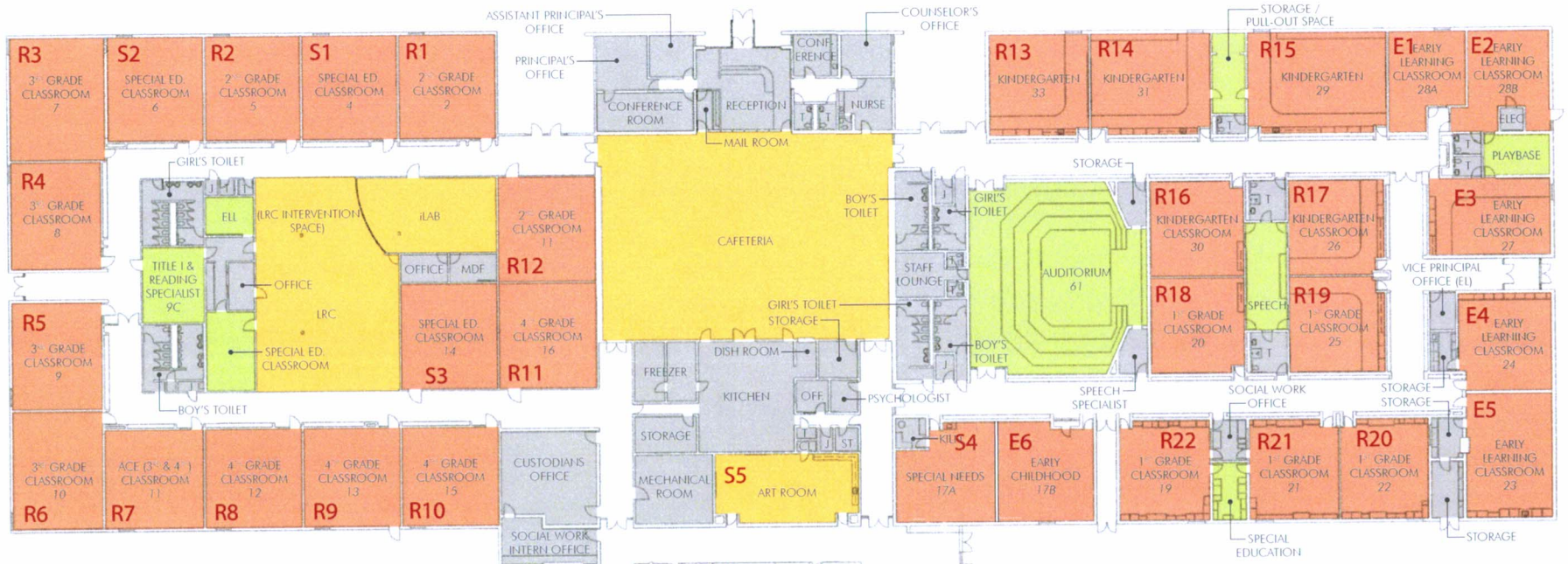
- FULL UTILIZATION
Space used throughout the entire day
- HEAVY UTILIZATION
Space used by rotating groups throughout most of the day
- INTERMITTENT UTILIZATION
Space used periodically and/or for small break-out groups
- UNDER UTILIZATION
Space not regularly used
- OTHER SPACES
Space not under consideration (private offices/administration, support spaces, etc.)

Utilization data based on 2017-2018 school schedule



FIRST FLOOR PLAN **CRAUGHWELL ELEMENTARY**
TROY COMMUNITY CONSOLIDATED SCHOOL DISTRICT 30-C
BUILT 1965, ADDITIONS IN 1967 & 2001
45,983 SF





SPACE UTILIZATION

- FULL UTILIZATION
Space used throughout the entire day
- HEAVY UTILIZATION
Space used by rotating groups throughout most of the day
- INTERMITTENT UTILIZATION
Space used periodically and/or for small break-out groups
- UNDER UTILIZATION
Space not regularly used
- OTHER SPACES
Space not under consideration (private offices/administration, support spaces, etc.)

Utilization data based on 2017-2018 school schedule

FIRST FLOOR PLAN

CRONIN ELEMENTARY

TROY COMMUNITY CONSOLIDATED SCHOOL DISTRICT 30-C
BUILT IN 1971, ADDITION IN 1977
96,968 SF

REGULAR (R) = 22
SPECIAL PROGRAMS (S) = 7
EARLY LEARNING (E) = 6

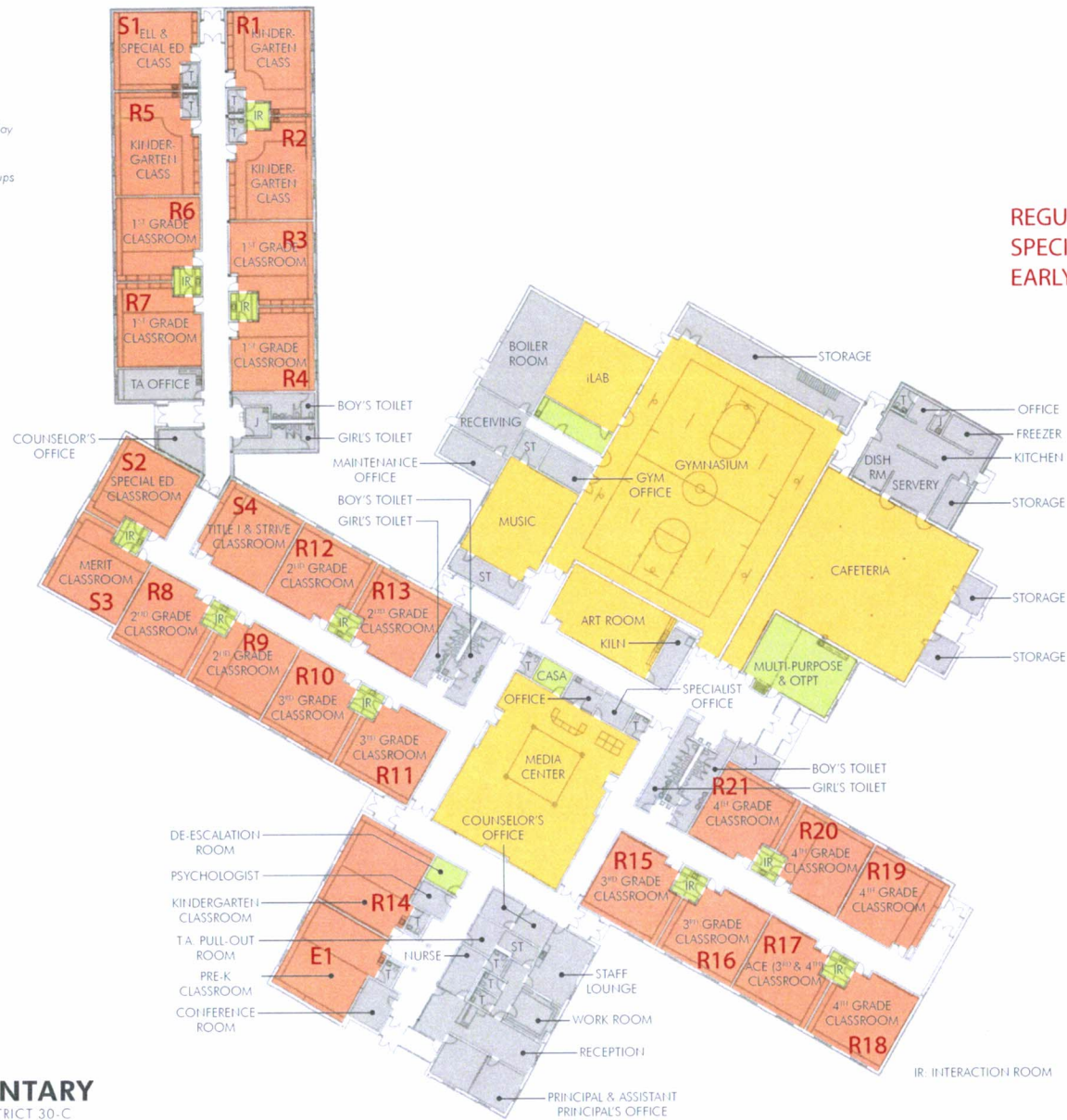


SPACE UTILIZATION

- FULL UTILIZATION
Space used throughout the entire day
- HEAVY UTILIZATION
Space used by rotating groups throughout most of the day
- INTERMITTENT UTILIZATION
Space used periodically and/or for small break-out groups
- UNDER UTILIZATION
Space not regularly used
- OTHER SPACES
Space not under consideration (private offices/ administration, support spaces, etc.)

Utilization data based on 2017-2018 school schedule

REGULAR (R) = 21
SPECIAL PROGRAMS (S) = 4
EARLY LEARNING (E) = 1



FIRST FLOOR PLAN

HERITAGE TRAIL ELEMENTARY

TROY COMMUNITY CONSOLIDATED SCHOOL DISTRICT 30-C
BUILT IN 1996, ADDITIONS IN 1999
66,448 SF



SPACE UTILIZATION

- FULL UTILIZATION
Space used throughout the entire day
- HEAVY UTILIZATION
Space used by rotating groups throughout most of the day
- INTERMITTENT UTILIZATION
Space used periodically and/or for small break-out groups
- UNDER UTILIZATION
Space not regularly used
- OTHER SPACES
Space not under consideration (private offices/administration, support spaces, etc.)

Utilization data based on 2017-2018 school schedule



REGULAR (R) = 22
SPECIAL PROGRAMS (S) = 8

FIRST FLOOR PLAN **HOFER ELEMENTARY**
TROY COMMUNITY CONSOLIDATED SCHOOL DISTRICT 30-C
BUILT IN 2008
71,261 SF



SPACE UTILIZATION

- FULL UTILIZATION
Space used throughout the entire day
- HEAVY UTILIZATION
Space used by rotating groups throughout most of the day
- INTERMITTENT UTILIZATION
Space used periodically and/or for small break-out groups
- UNDER UTILIZATION
Space not regularly used
- OTHER SPACES
Space not under consideration (private offices/administration, support spaces, etc.)

Utilization data based on 2017-2018 school schedule



SEE 2ND FLOOR FOR TOTALS

FIRST FLOOR PLAN **TROY MIDDLE SCHOOL**
TROY COMMUNITY CONSOLIDATED SCHOOL DISTRICT 30-C
BUILT IN 2000
149,577 SF

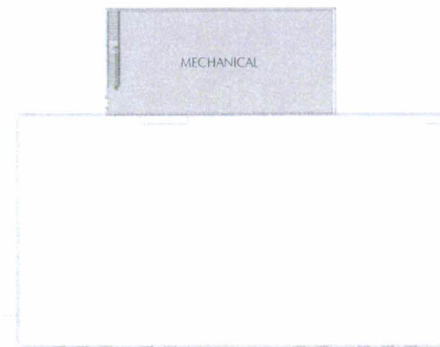
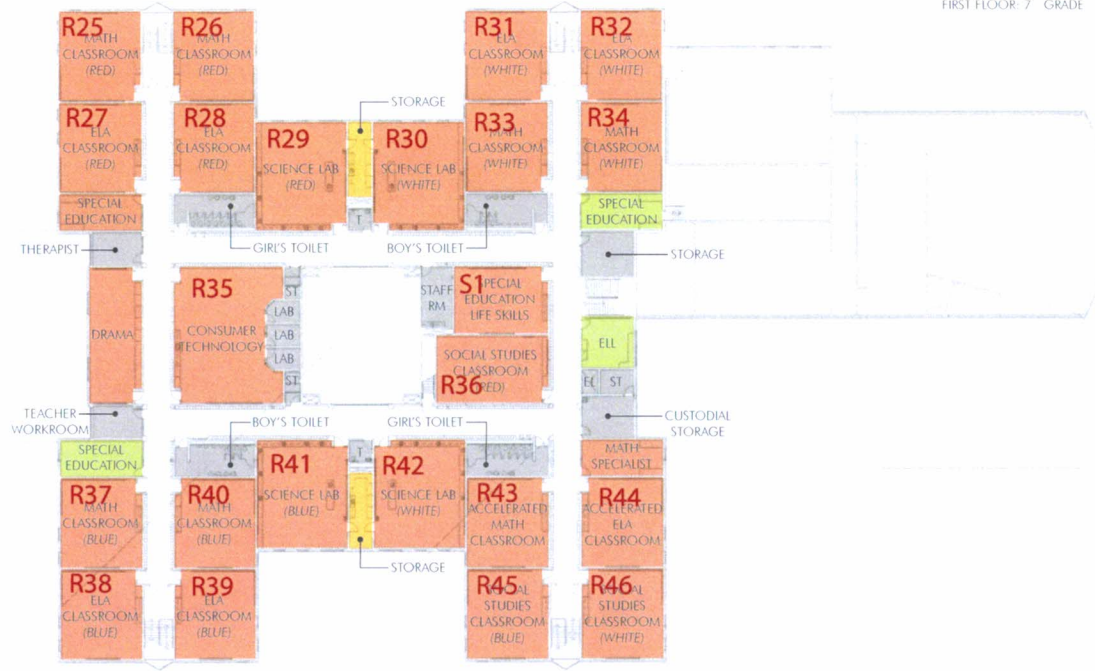


SPACE UTILIZATION

- FULL UTILIZATION
Space used throughout the entire day
- HEAVY UTILIZATION
Space used by rotating groups throughout most of the day
- INTERMITTENT UTILIZATION
Space used periodically and/or for small break-out groups
- UNDER UTILIZATION
Space not regularly used
- OTHER SPACES
Space not under consideration (private offices/ administration, support spaces, etc.)

Utilization data based on 2017-2018 school schedule

REGULAR (R) = 46
SPECIAL PROGRAMS (S) = 1



SECOND FLOOR PLAN
TROY MIDDLE SCHOOL
 TROY COMMUNITY CONSOLIDATED SCHOOL DISTRICT 30-C
 BUILT IN 2000
 149,577 SF

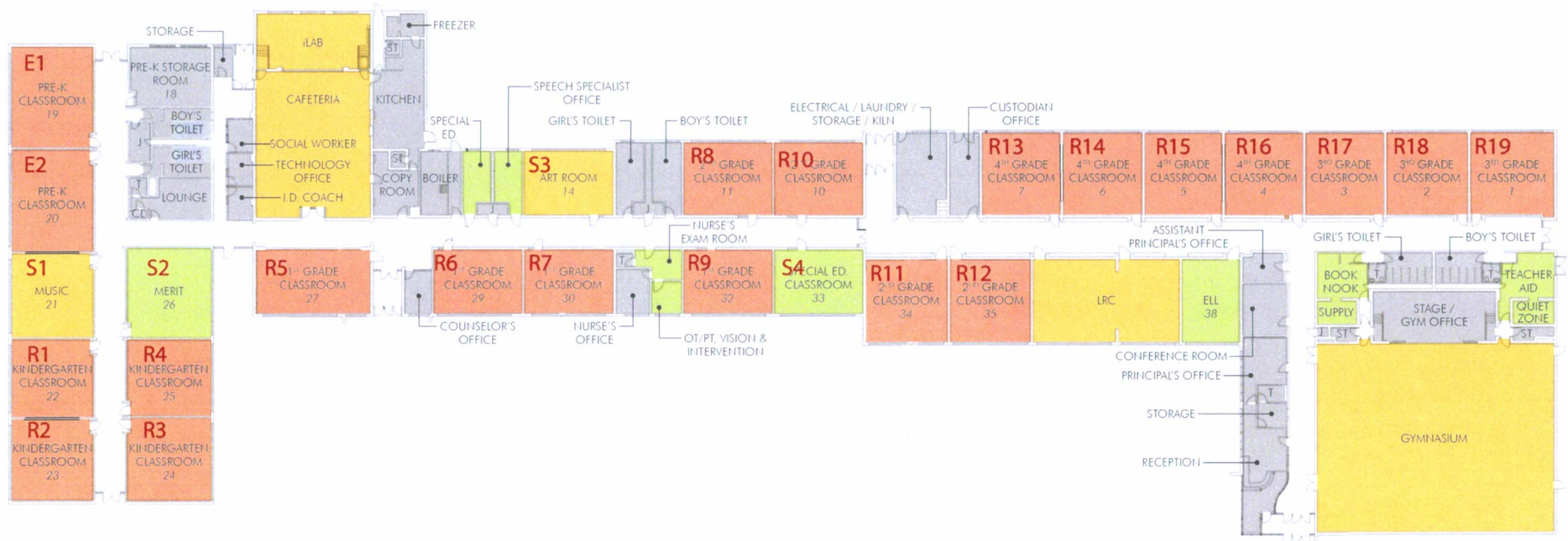


SPACE UTILIZATION

- FULL UTILIZATION
Space used throughout the entire day
- HEAVY UTILIZATION
Space used by rotating groups throughout most of the day
- INTERMITTENT UTILIZATION
Space used periodically and/or for small break-out groups
- UNDER UTILIZATION
Space not regularly used
- OTHER SPACES
Space not under consideration (private offices/administration, support spaces, etc.)

Utilization data based on 2017-2018 school schedule

REGULAR (R) = 19
SPECIAL PROGRAMS (S) = 4
EARLY LEARNING (E) = 2



FIRST FLOOR PLAN

SHOREWOOD ELEMENTARY

TROY COMMUNITY CONSOLIDATED SCHOOL DISTRICT 30-C
BUILT IN 1950, ADDITIONS IN 1961 & 1964
52,021 SF



SPACE UTILIZATION

- FULL UTILIZATION
Space used throughout the entire day
- HEAVY UTILIZATION
Space used by rotating groups throughout most of the day
- INTERMITTENT UTILIZATION
Space used periodically and/or for small break-out groups
- UNDER UTILIZATION
Space not regularly used
- OTHER SPACES
Space not under consideration (private offices/administration, support spaces, etc.)

Utilization data based on 2017-2018 school schedule



REGULAR (R) = 45
SPECIAL PROGRAMS (S) = 7



FIRST FLOOR PLAN
WILLIAM B. ORENIC INTERMEDIATE
 TROY COMMUNITY CONSOLIDATED SCHOOL DISTRICT 30-C
 BUILT IN 2006
 128,108 SF

SECOND FLOOR PLAN



CRAUGHWELL ELEMENTARY



5.21 SITE STUDY



CRONIN ELEMENTARY



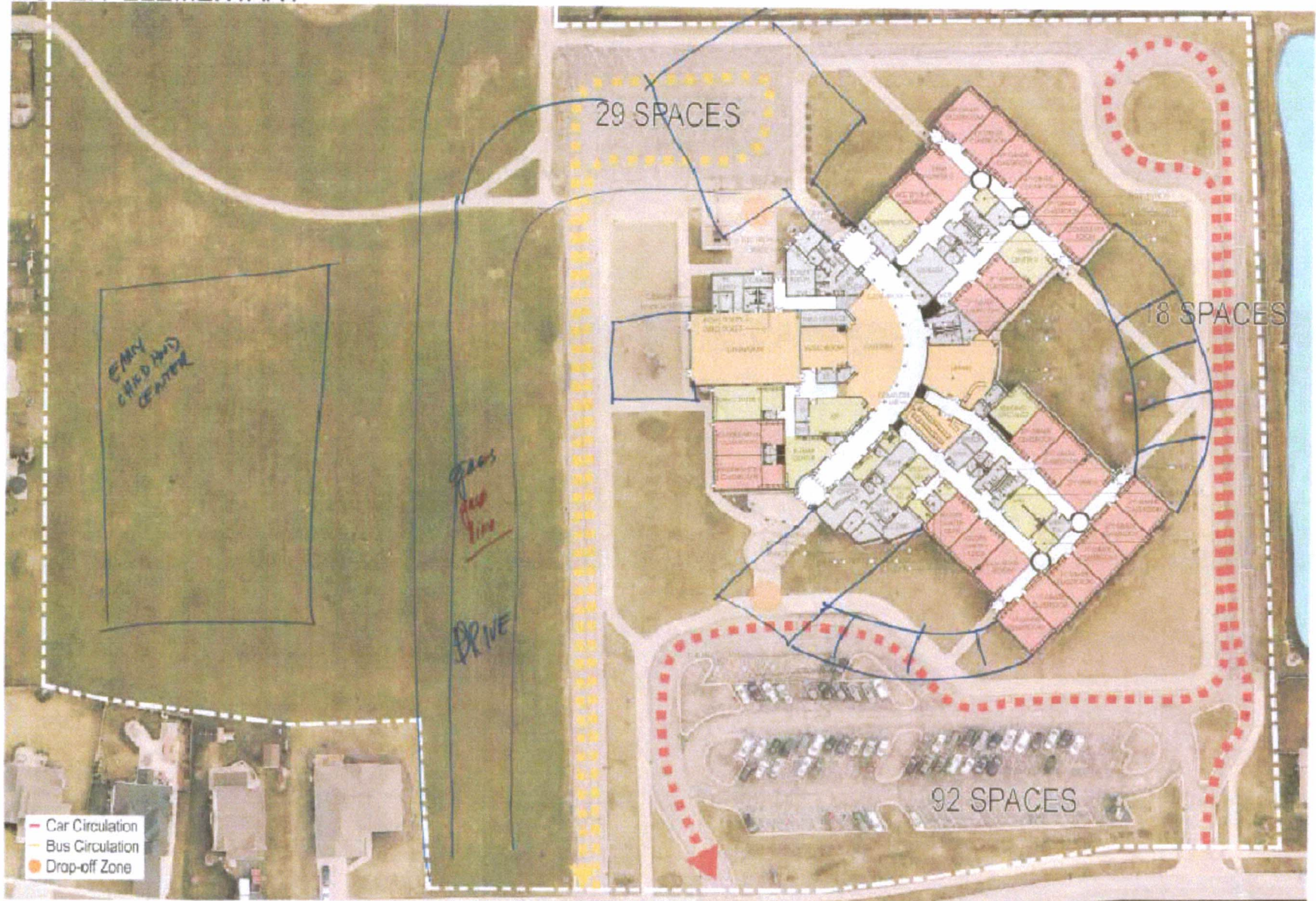
LEGATARCHITECTS

5.22 SITE STUDY

LEGATARCHITECTS
SUSTAINABILITY | PERFORMANCE | DESIGN



HOFER ELEMENTARY



SCALE: 1" = 30'-0"

LEGATARCHITECTS

5.23 SITE STUDY

LEGATARCHITECTS
SUSTAINABILITY | PERFORMANCE | DESIGN



HERITAGE TRAIL ELEMENTARY



SCALE: 1" = 30'-0"

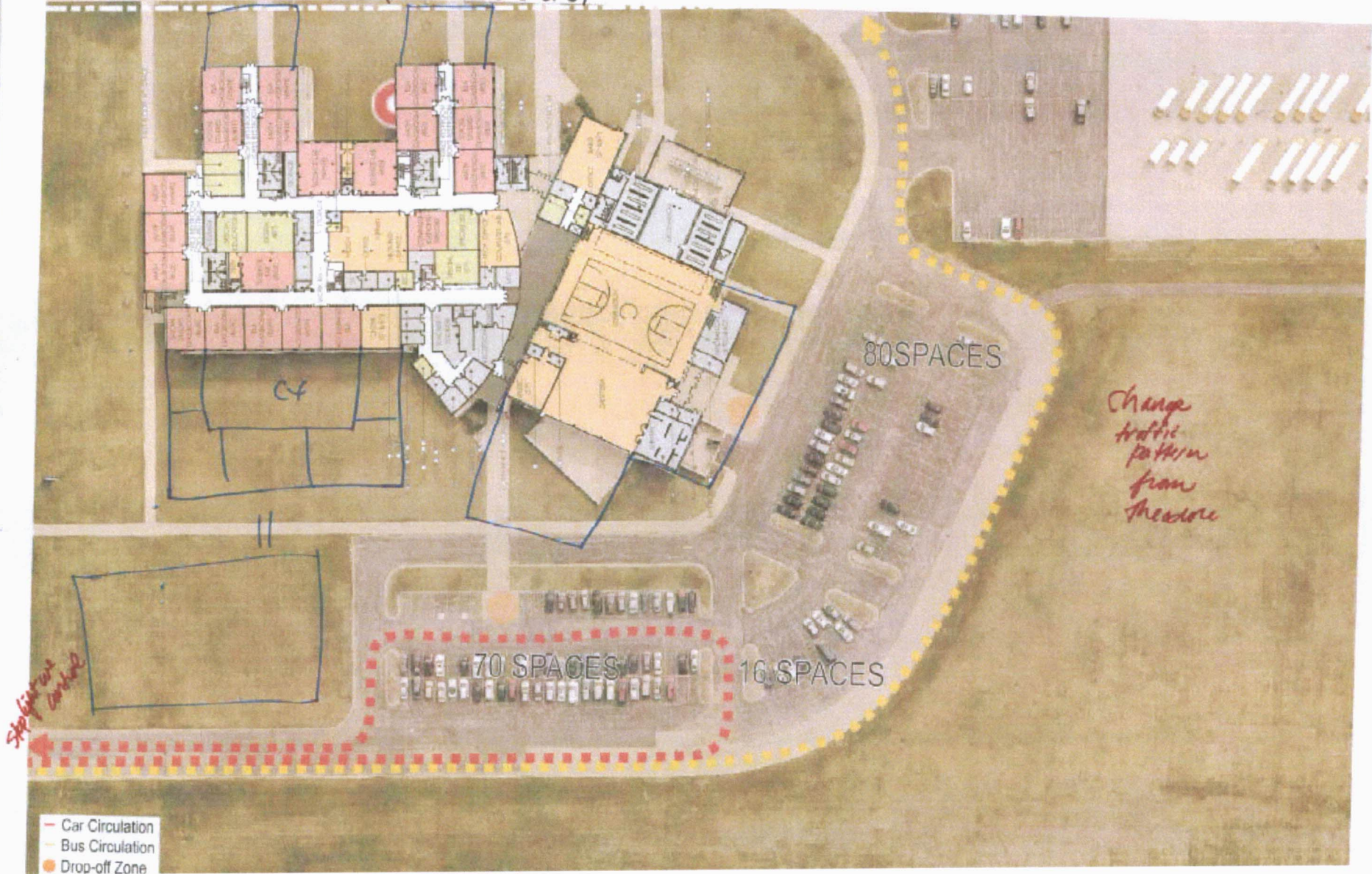
LEGATARCHITECTS
1125 SOUTH 11TH STREET, SUITE 100, DENVER, CO 80202

5.24 SITE STUDY

LEGATARCHITECTS
SUSTAINABILITY | PERFORMANCE | DESIGN



ORENIC INTERMEDIATE (GRADES 5 & 6)



PURCHASED FARMLAND



SCALE: 1" = 60'-0"

5.26 SITE STUDY



SHOREWOOD ELEMENTARY



SCALE: 1" = 30'-0"

LEGATARCHITECTS
SUSTAINABILITY | PERFORMANCE | DESIGN

5.27 SITE STUDY

LEGATARCHITECTS
SUSTAINABILITY | PERFORMANCE | DESIGN



TROY MIDDLE SCHOOL (GRADES 7 & 8)

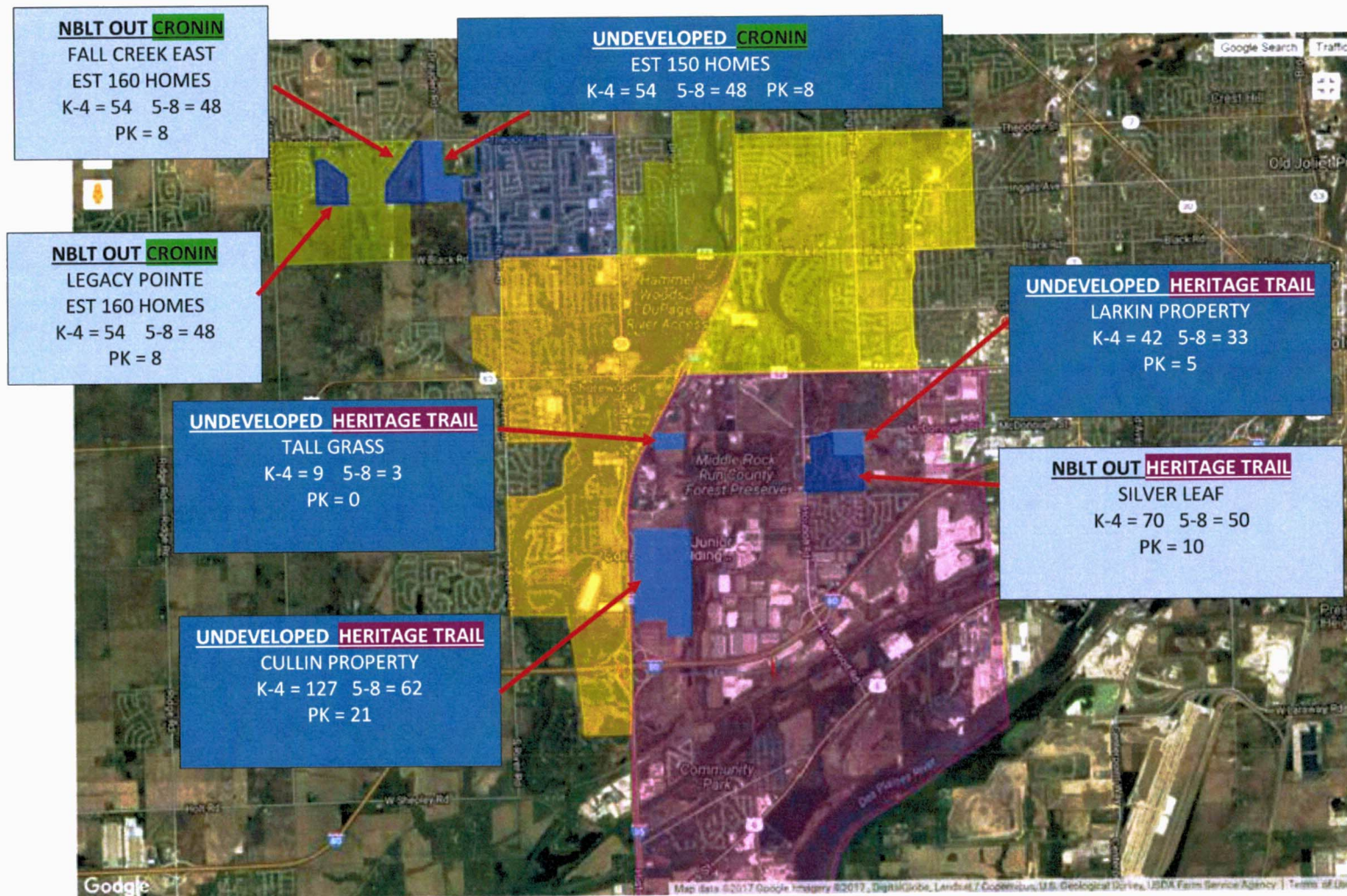


SCALE: 1" = 30'-0"

LEGATARCHITECTS
SUSTAINABILITY | PERFORMANCE | DESIGN



Meeting #3

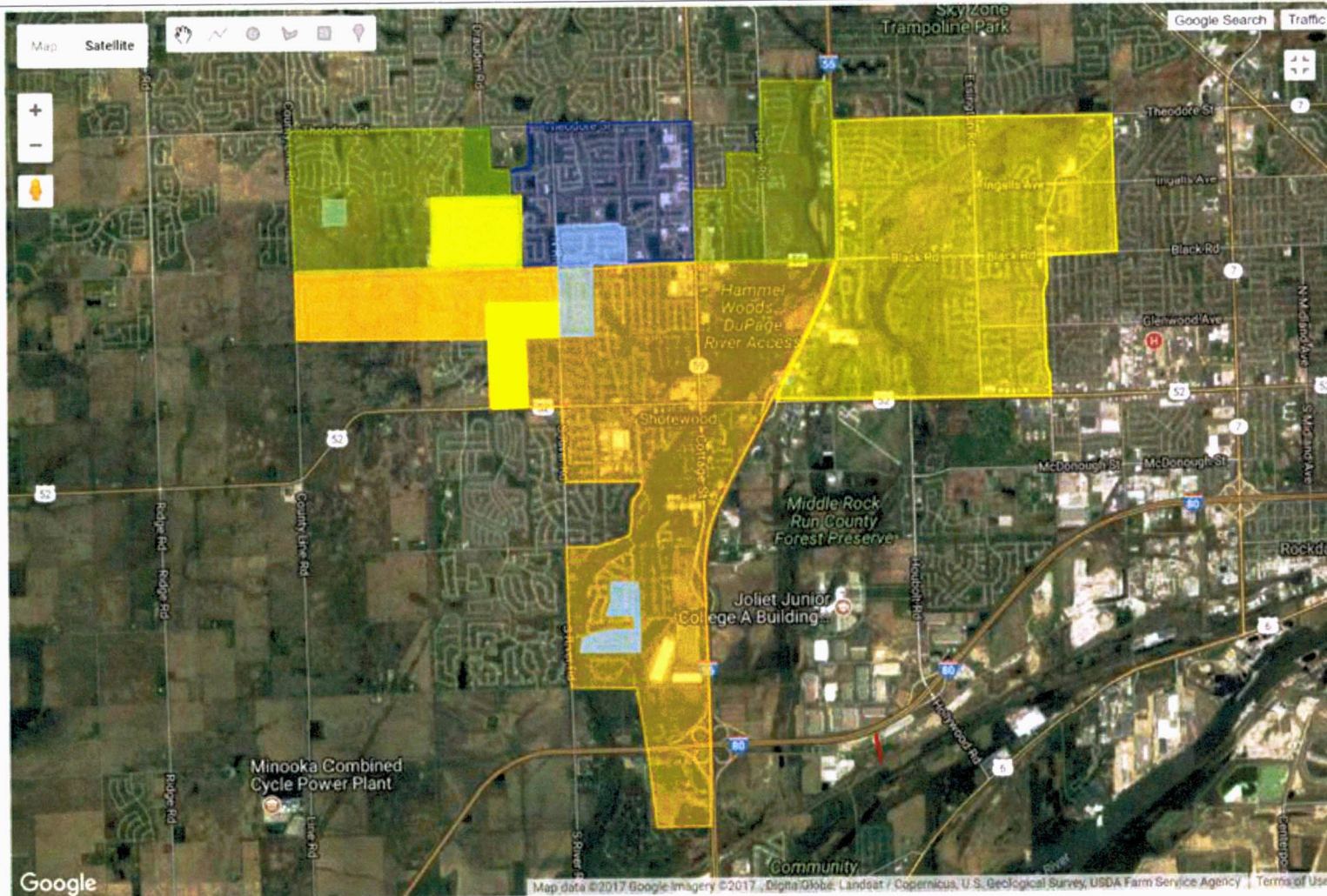


Joliet undeveloped and not built out subdivisions with school boundaries

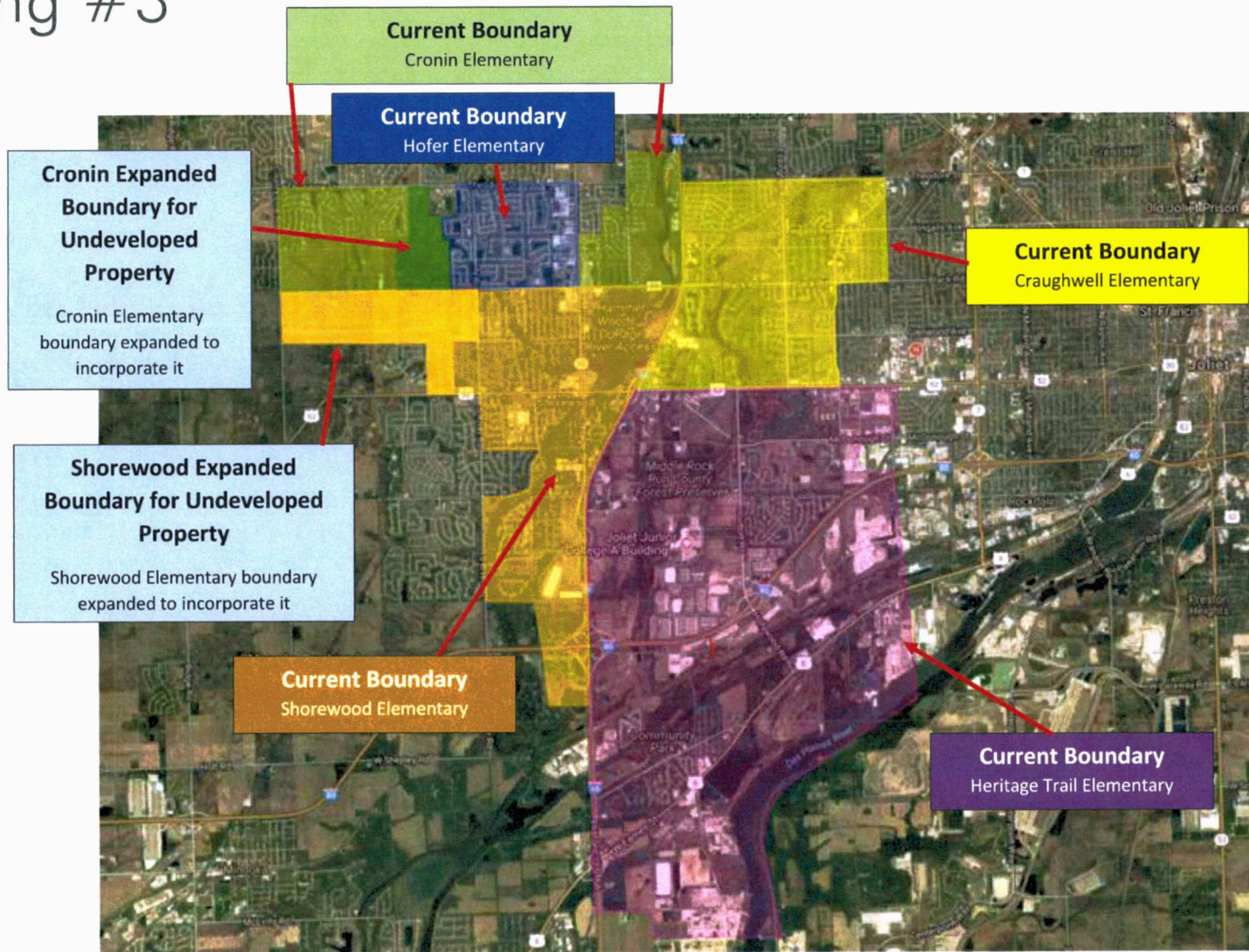


Meeting #3

Shorewood Undeveloped and Not Built out Subdivisions with School Boundaries



Meeting #3



Troy 30-C School Boundaries: Current and Expanded to Undeveloped Property

