

FOR DECISION

AGENDA ITEM:

November 27, 2012

SUBJECT: Schoolyard Upgrades

MOTION: That the Board of Education of Oak Park District 97 authorized its landscape architectural firm, Altamanu, Inc., to prepare the necessary construction documents and bid specifications associated with the schoolyard upgrades at Hatch, Irving, Mann & Whittier Schools as outlined in the memorandum to the Superintendent dated November 27, 2012.



Oak Park Elementary School District 97

970 Madison ▪ Oak Park ▪ Illinois ▪ 60302 ▪ ph: 708.524.3000 ▪ fax: 708.524.3019 ▪ www.op97.org

TO: Dr. Albert G. Roberts, Superintendent of Schools

FROM: Therese M. O'Neill, Asst. Supt. Finance & Operations

SUBJECT: Playground Update

DATE: November 27, 2012

As reviewed at the November 13, 2012 meeting, please find attached final renditions of the four schoolyard/playground updates (Hatch, Irving, Mann & Whittier), along with a summary spreadsheet of the base bid and specific alternates to each location, to be commissioned by the Board of Education to the landscape architectural firm of Altamanu. Following approval by the Board of Education, Altamanu will begin the preparation of construction documents and bid specifications in order to let such bid in late January, 2013 with receipt of bid documents by February 13, 2013. These bids will come to the Board for review at the February 20, 2013 meeting and anticipate Board approval at its March 19, 2013 meeting.

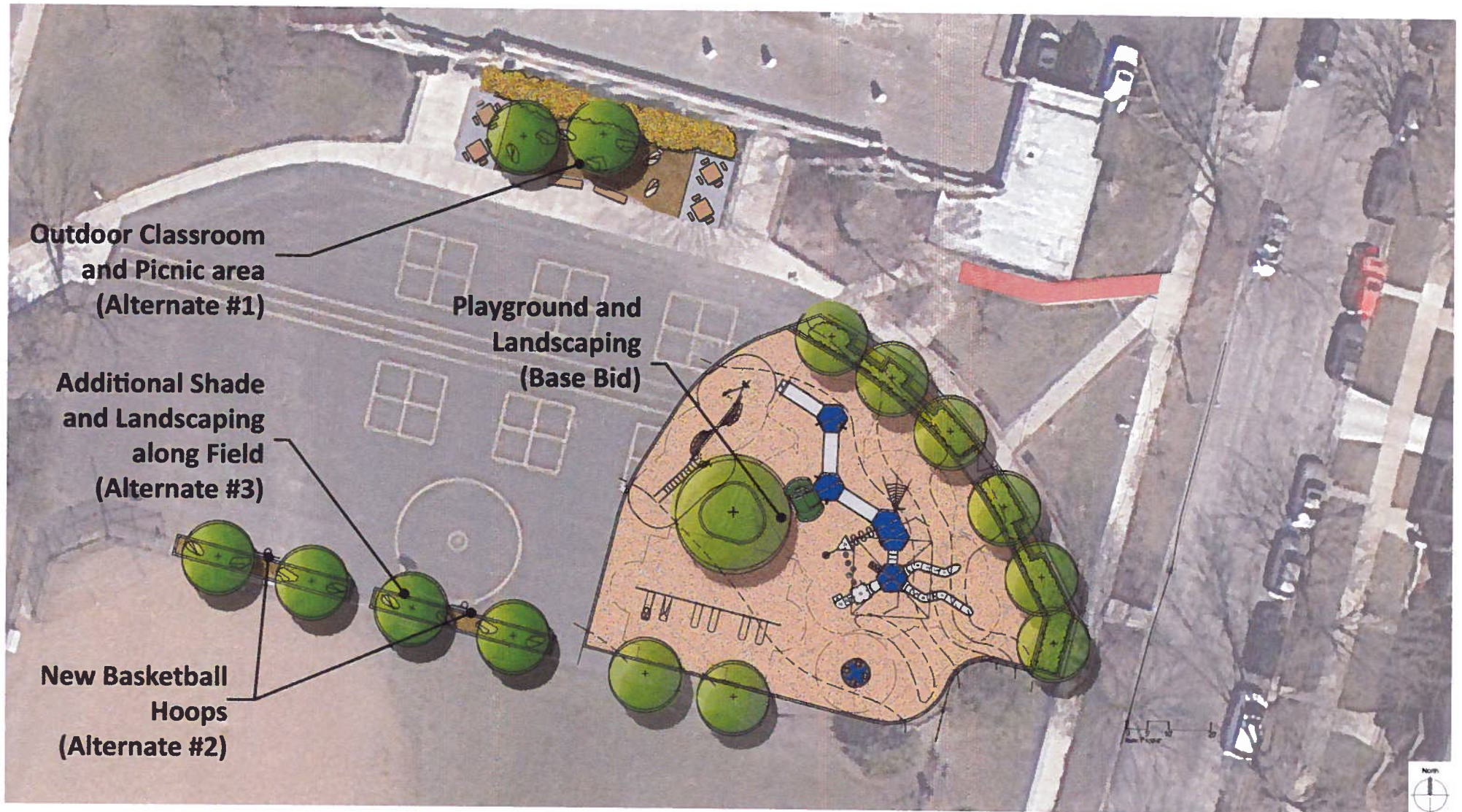
Attached are the schematics for the Hatch, Mann & Whittier schools and we will include the former Option 1B (borne from the Board's discussion on November 13, 2013) as part of the overall Irving base bid with the three other playground upgrades. Option 1B is the original Option 1 with a U10 (rather than U8) turf field (180 x 114) at the north end of Irving, a refurbished parking lot at the south end, and the new playground in the location of the current playground. There will be two alternates for Irving – Alternate 1 will be the original Option 1 (a U8 turf field), and Alternate 2 will be Option 4 presented the night of the November 13, 2012 meeting and is most comparable to the original Irving Schoolyard Master Plan.

Also attached is a cost summary spreadsheet of each individual school's base bid and then a delineation, by building, of the school's respective alternates.

attachments

PLAYGROUNDS
SUMMER 2013 - REVISED
November 27, 2012

Category of Work	Hatch	Irving *	Mann	Whittier
Removals	\$21,445		\$13,331	\$16,755
Site Grading & Excavation	\$10,000		\$4,000	\$12,000
Site Draining & Utilities	\$5,000		\$3,000	\$3,000
Surfacing & Hardscape	\$18,010		\$17,438	\$34,285
Play Apparatus Areas	\$158,311		\$179,702	\$148,503
Site Furniture	\$6,600		\$10,587	\$6,425
Site Landscape Plantings	\$12,385		\$11,044	\$5,389
Sub-Total	\$231,751		\$239,102	\$226,357
10% Contingency	\$23,175		\$23,910	\$22,636
Total - Playground Improvements	\$254,926	\$383,572	\$263,012	\$248,993
Playground Surfacing	\$133,875		\$129,360	\$164,850
10% Contingency	\$13,388		\$12,936	\$16,485
Total - Playground Surfacing	\$147,263		\$142,296	\$181,335
Total - Refurbished Parking Lot		\$81,240		
Total - U10 (180 x 114) Turf Field		\$701,330		
Grand Total	\$402,189	\$1,166,142	\$405,308	\$430,328
* Irving Playground - components blended so am presenting just grand total.				
Alternate #1 - Basketball Hoops	\$5,000			
Alternate #2 - Landscape Area	\$15,629			
Alternate #3 - Outdoor Classroom/Picnic Area	\$27,565			
Alternate #1 - Base Plan plus U8 (150 x 75)		\$987,609		
Alternate #2 - U10 (south), playground (NW)		\$1,306,317		
new parking (existing playground)				
Alternate #1 - School Entrance Walkway			\$13,670	
Alternate #1 - Group Swing - 2/5 Playground				\$22,484
Alternate #2 - Water Supply for Garden				\$5,000
Alterante #3 - Outdoor Classroom				\$5,241
Alterante #4 - Additional Landscaping				\$15,129

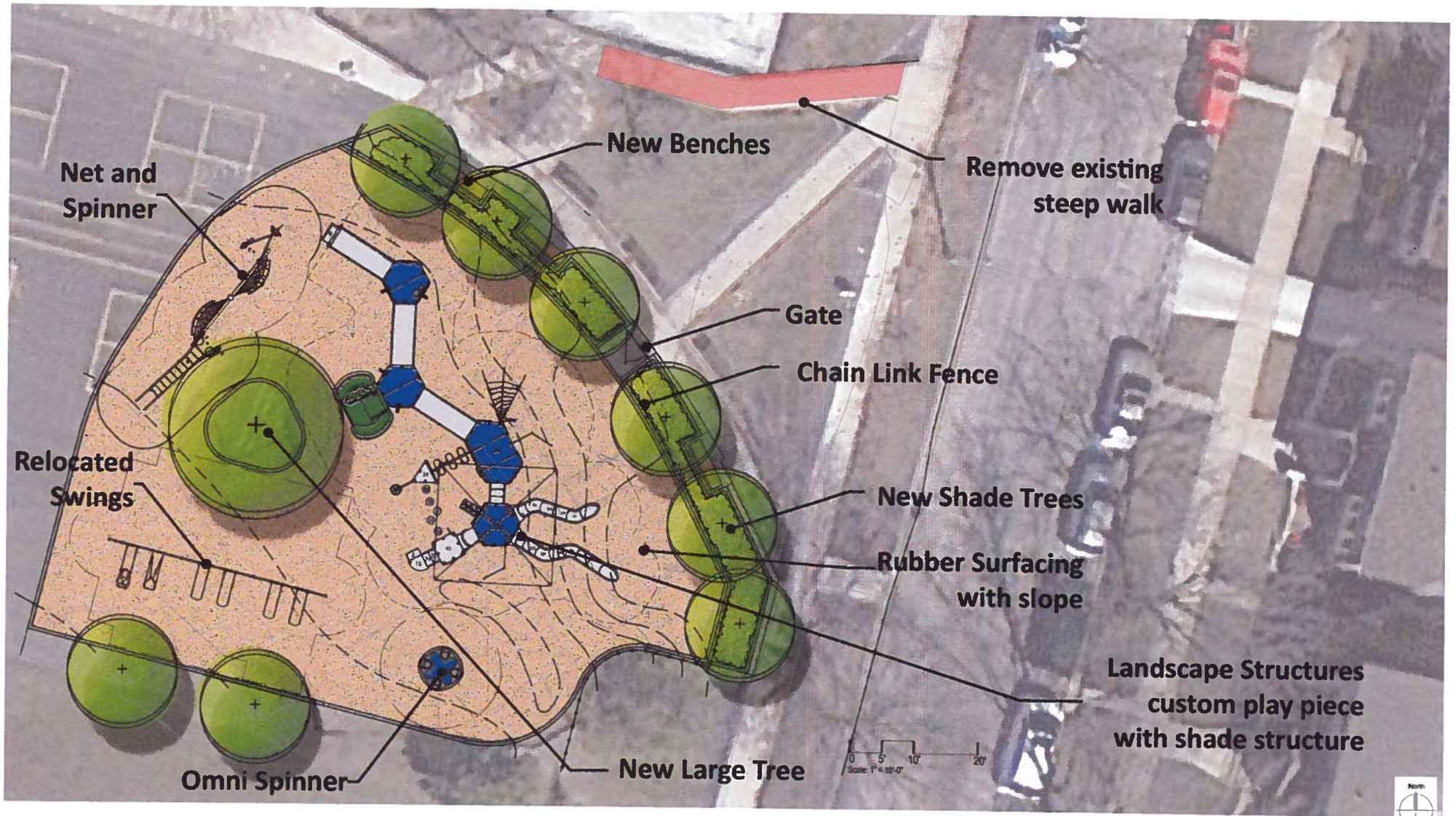


11.06.2012

Hatch Elementary School

Oak Park District 97





11.06.2012

Hatch Elementary School

Oak Park District 97



	Hatch School - Design/prelim Cost Estimate 11/06/12				
	HATCH ELEM PLAYGROUND IMPROVEMENTS	QUANTITY	UNIT	UNIT PRICE	EXTENSION
	<u>Description</u>				
	A REMOVALS:				
1	Removal and disposal of existing playground structures, footing, timber edge, concrete edging, benches, and mulch surfacing and rubber within limits of existing playground	1	LS	\$10,000.00	\$10,000.00
2	Removal existing asphalt pavement and base next to the playground	1	ls	\$5,000.00	\$5,000.00
2	Sawcut and remove existing sidewalk adjacent to building	27	SY	\$35.00	\$945.00
3	Furnish, install and maintain tree protection fencing	1	LS	\$500.00	\$500.00
5	Removal of existing timber walls	1	LS	\$5,000.00	\$5,000.00
	REMOVALS SUBTOTAL				\$21,445.00
	B SITE GRADING & EXCAVATION:				
1	Perform all grading and excavation to obtain sub grades for pavement and other grading requirements as shown or noted on the Plans and in accordance with the specifications.	1	Lump sum	\$10,000.00	\$10,000.00
	SUBTOTAL GRADING AND EXCAVATION				\$10,000.00
	C SITE DRAINAGE AND UTILITIES:				
1	Underdrainage and connections	1	LS	\$5,000.00	\$5,000.00
	SUBTOTAL SITE DRAINAGE AND UTILITIES				\$5,000.00
	D SURFACING AND HARDSCAPE:				
1	Furnish and install 5" Thick sidewalk with mesh, including site furnishing pads as shown on the drawings	130	Square feet	\$7.00	\$910.00
2	Furnishing and install asphalt patch around play area	25	SY	\$100.00	\$2,500.00
4	Furnishing and install 4' ht vinyl coated chain link fence	165	LF	\$60.00	\$9,900.00
4	Furnishing and install chain link fence gate	1	EA	\$500.00	\$500.00
4	Furnishing and install 6" curb along walk	150	LF	\$28.00	\$4,200.00
	SUBTOTAL CONCRETE & SURFACING				\$18,010.00
	E PLAY APPARATUS AREAS				
1	Apparatus: Landscape Structures net (2760) - long net - monkey bars with spinner	1	Each	\$19,103.00	\$19,103.00
2	Apparatus: Landscape Structures Omni Spinner	1	Each	\$8,330.00	\$8,330.00
3	Apparatus: Landscape Structures large custom piece	1	Each	\$119,238.00	\$119,238.00
4	Apparatus: Landscape Structures existing swing relocation, refurbish and powerwash	1	Each	\$3,000.00	\$3,000.00
7	Furnish and install 6" x 18" Concrete curb around perimeter of play surface areas as shown on drawings.	315	Linear feet	\$24.00	\$7,560.00
7	Furnish and install 6" x 18" Concrete curb around interior playground tree	45	Linear feet	\$24.00	\$1,080.00
	SUBTOTAL PLAY APPARATUS AREAS				\$158,311.00
	F SITE FURNITURE				
1	8' long backed benches on concrete pads	3	Each	\$1,900.00	\$5,700.00
1	Wave bike rack on existing pavement	1	Each	\$900.00	\$900.00
	SUBTOTAL SITE & ATHLETIC FURNITURE				\$6,600.00
	G SITE LANDSCAPE PLANTINGS (landscape items)				

1	shade trees	7	Each	\$800.00	\$5,600.00
1	Large caliper shade tree	1	Each	\$2,500.00	\$2,500.00
2	Native grasses	470	SF	\$8.00	\$3,760.00
2	Mulch for landscape area	75	SY	\$7.00	\$525.00
	SUBTOTAL SITE & ATHLETIC FURNITURE				\$12,385.00
					\$231,751.00
	10% contingency				\$23,175.10
	TOTAL FOR HATCH SCHOOL PLAYGROUND IMPROVEMENTS				\$254,926.10

H. PLAYGROUND SURFACING

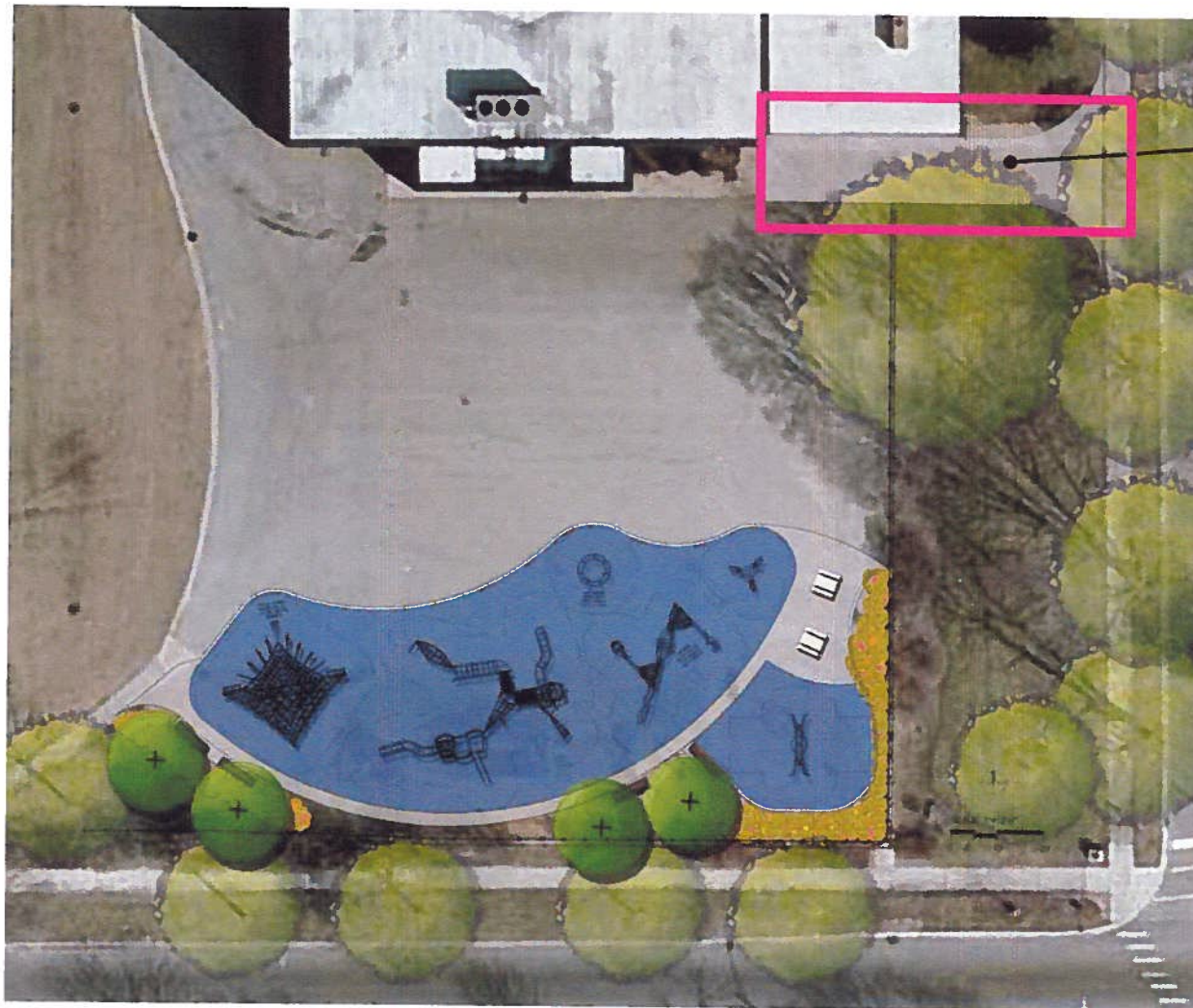
1	Furnish and install mud slab, filter fabric and base shown on drawings	6,375	Square feet	\$7.00	\$44,625.00
2	Synthetic rubber surfacing (3 1/2" total): Furnish and install 1/2" minimum thickness of EPDM surfacing material and 3" minimum thickness of SBR base mat as supplied by Surface America or equal. (see detail and specifications)	6,375	Square feet	\$14.00	\$89,250.00
					\$133,875.00
	10% contingency				\$13,387.50
	Total				\$147,262.50

J BASKETBALL HOOPS				
1 Basketball Hoops/backboards - not adjustable	2	EA	\$2,500	\$5,000.00
SUBTOTAL SITE & ATHLETIC FURNITURE				\$5,000.00

K LANDSCAPE AREA ALONG ATHLETIC FIELD				
1 Shade Trees	4	EA	\$800	\$3,200.00
2 Small Boulders	8	EA	\$500	\$4,000.00
3 Sawcut and remove pavement	37	SY	\$30	\$1,110.00
4 New flush concrete curb	190	LF	\$24	\$4,560.00
5 3" hardwood mulch	37	SY	\$7	\$259.00
6 Asphalt Patch	25	SY	\$100	\$2,500.00
SUBTOTAL LANDSCAPED AREA ALONG ATHLETIC FIELD				\$15,629.00

L OUTDOOR CLASSROOM / PICNIC AREA				
1 Remove existing shrubs and mulch	1	LS	\$1,000	\$1,000.00
1 Shade Trees	2	EA	\$800	\$1,600.00
2 Small Boulders	6	EA	\$500	\$3,000.00
3 Large Boulders	1	EA	\$1,000	\$1,000.00
4 Native Grass Planting	450	SF	\$8	\$3,600.00
5 3" hardwood mulch	75	SF	\$7	\$525.00
6 Picnic Tables	4	EA	\$3,200	\$12,800.00
7 Concrete paving around tables	320	SF	\$7	\$2,240.00
8 New backless benches	2	EA	\$900	\$1,800.00
SUBTOTAL LANDSCAPED AREA ALONG ATHLETIC FIELD				\$27,565.00

PLAYGROUND CONCEPT PLAN



ALTERNATE



11.06.2012

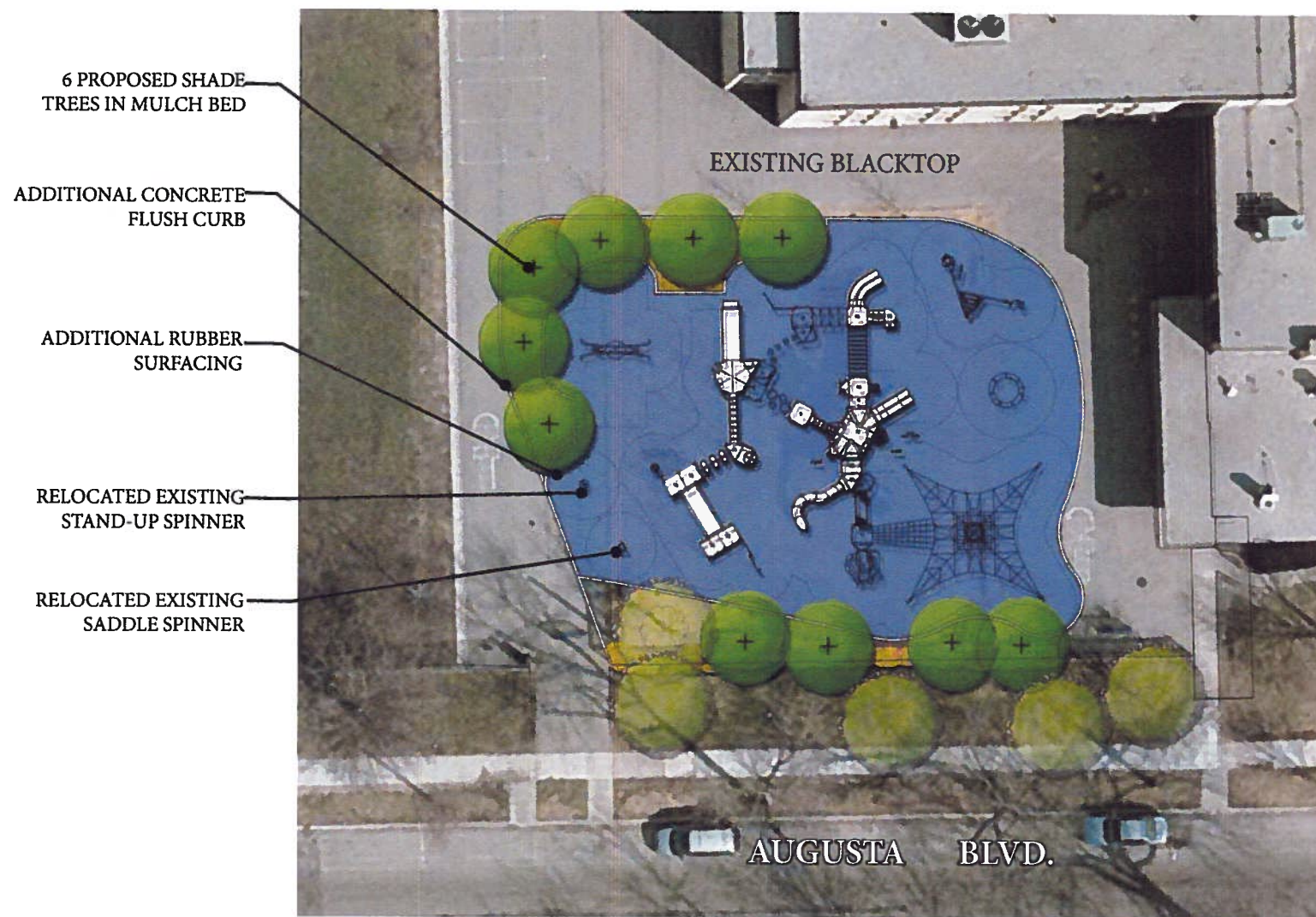
Mann Elementary School

Oak Park District 97



Mann School - Final Concept Plan Cost Estimate 11/06/12				
MANH ELEM PLAYGROUND IMPROVEMENTS	QUANTITY	UNIT	UNIT PRICE	EXTENSION
A REMOVALS:				
1 Removal and disposal of existing playground structures, footing, mulch and base, conc edge and site furnishing within limits of existing playground	1	LS	\$7,000.00	\$7,000.00
2 Removal of asphalt surfacing and base	438	SY	\$12.00	\$5,253.33
3 Removal of existing concrete pavement	29	SY	\$20.00	\$577.78
4 Furnish, install and maintain tree protection fencing	1	LS	\$500.00	\$500.00
SUBTOTAL A TOTAL				\$13,331.11
B SITE GRADING & EXCAVATION:				
1 Perform all grading and excavation to obtain sub grades for pavement and other grading requirements as shown or noted on the Plans and in accordance with the specifications.	1	Lump sum	\$3,500.00	\$3,500.00
2 Erosion control	1	Lump sum	\$500.00	\$500.00
SUBTOTAL GRADING AND EXCAVATION				\$4,000.00
C SITE DRAINAGE AND UTILITIES:				
1 Underdrainage and connections	1	LS	\$3,000.00	\$3,000.00
SUBTOTAL SITE DRAINAGE AND UTILITIES				\$3,000.00
D SURFACING				
1 Furnish and install 5" Thick sidewalk with mesh, including site furnishing pads	1,180	Square feet	\$7.00	\$8,260.00
2 Furnishing and install asphalt patch	38	sy	\$100.00	\$3,777.78
3 Furnish and install 6" x 18" concrete curb around perimeter of play surface areas as shown on drawings.	225	Linear feet	\$24.00	\$5,400.00
SUBTOTAL CONCRETE & SURFACING				\$17,437.78
E PLAY APPARATUS AREAS				
1 Apparatus: Furnish Kompan BLAZER ELE400021	1	Each	\$3,143.00	\$3,143.00
2 Apparatus: Furnish Kompan Supernova GXY944	1	Each	\$8,793.54	\$8,793.54
3 Apparatus: Furnish Kompan GXY942	1	Each	\$44,037.00	\$44,037.00
4 Apparatus: Furnish Kompan ELE5900296	1	Each	\$71,340.50	\$71,340.50
5 Apparatus: Furnish Kompan Classic Dome Cor8842	1	Each	\$46,480.00	\$46,480.00
6 Apparatus: Furnish LS Oodle Swing	1	Each	\$5,908.00	\$5,908.00
SUBTOTAL PLAY APPARATUS AREAS				\$179,702.04
F SITE FURNITURE				
1 Furnish and install backed wood bench 6' long	4	Each	\$1,660.40	\$6,641.60
2 Furnish and install precast concrete picnic table	2	Each	\$1,560.00	\$3,120.00
3 Furnish and install Chain Link Fence	5	#	\$45.00	\$225.00
4 Repair and repaint existing fence	1	ls	\$500.00	\$500.00
SUBTOTAL SITE & ATHLETIC FURNITURE				\$10,586.60
G SITE LANDSCAPE PLANTINGS (landscape items)				
1 Furnish and install shade tree	4	ea	\$450.00	\$1,800.00
2 Furnish and install ornamental grasses	750	sf	\$8.00	\$6,000.00
3 Furnish and install topsoil	52	cy	\$50.00	\$2,600.00
4 Furnish and install 3" mulch	92	sy	\$7.00	\$644.00
SUBTOTAL SITE LANDSCAPE PLANTINGS				\$11,044.00
TOTAL				\$239,101.53
10% contingency				\$23,910.15
TOTAL FOR MANN SCHOOL PLAYGROUND IMPROVEMENTS				\$263,011.68
PLAYGROUND SURFACING				
1 Furnish and install mud slab, filter fabric and base	6,160	Square feet	\$7.00	\$43,120.00
2 Synthetic rubber surfacing	6,160	Square feet	\$14.00	\$86,240.00
				\$129,360.00
ALTERNATE - SCHOOL ENTRANCE WALKWAY				
1 Removal of existing concrete pavement	58	sy	\$20.00	\$1,155.56
2 Removal of asphalt pavement	29	sy	\$12.00	\$346.67
3 Sawcut pavement	35	#	\$5.00	\$175.00
4 Removal of existing fence and footing	12	lf	\$25.00	\$300.00
5 Furnish and install 5" Thick sidewalk	1,400	sf	\$7.00	\$9,800.00
6 Furnish and install chain link fence	10	lf	\$16.00	\$160.00
SUBTOTAL				\$12,437.23
10% contingency				\$1,243.72
TOTAL FOR SCHOOL ENTRANCE WALKWAY -ALTERNATE				\$13,680.95

5 - 10 PLAYGROUND CONCEPT PLAN



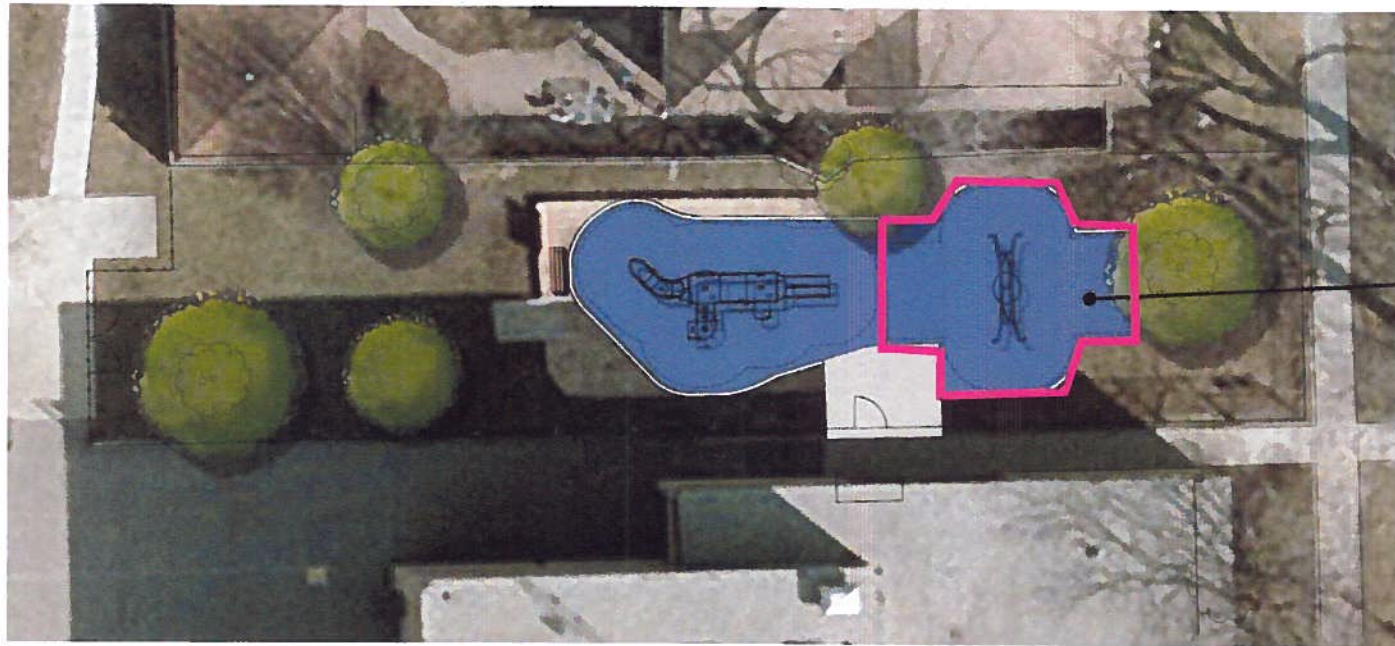
11.13.2012

Whittier Elementary School

Oak Park District 97



2 - 5 PLAYGROUND CONCEPT PLAN




ALTERNATE



11.06.2012

Whittier Elementary School
Oak Park District 97

 Oak Park Elementary School District 97

 **Manhard**
CONSULTING

Altamanu Inc. 

Whittier School - Final Concept Cost Estimate 11/13/12

WHITTIER ELEM PLAYGROUND IMPROVEMENTS		QUANTITY	UNIT	UNIT PRICE	EXTENSION
A. REMOVALS:					
5 -10 PLAYGROUND					
1	Removal existing playground mulch surfacing, timber edging, site furnishing and some of play equipment as necessary within limits of existing playground.	1	Lump sum	\$6,000.00	\$6,000.00
2	Furnish, install and maintain tree protection fencing	30	Linear feet	\$5.00	\$150.00
3	Removal of existing trees	1	Lump sum	\$2,000.00	\$2,000.00
4	Removal of asphalt	289	SY	\$12.00	\$3,468.87
5	Removal of existing fence and footing	18	Linear feet	\$25.00	\$450.00
6	Sawcut asphalt pavement	330	Linear feet	\$5.00	\$1,650.00
2-5 PLAYGROUND					
7	Removal existing 2-5 playground mulch surfacing, plastic edging, site furnishing as necessary within limits of existing playground.	1	Lump sum	\$1,750.00	\$1,750.00
8	Stockpile existing 2-5 playground mulch surfacing	106	SY	\$6.00	\$633.33
9	Furnish, install and maintain tree protection fencing	131	Linear feet	\$5.00	\$655.00
SUBTOTAL REMOVALS					\$16,755.00
B. SITE GRADING & EXCAVATION:					
5 - 10 PLAYGROUND					
1	Perform all grading and excavation to obtain sub grades for pavement and other grading requirements	1	Lump sum	\$3,000.00	\$3,000.00
2	Erosion Control	1	Lump sum	\$1,000.00	\$1,000.00
2-5 PLAYGROUND					
3	Perform all grading and excavation to obtain sub grades for pavement and other grading requirements for playground	1	Lump sum	\$7,800.00	\$7,800.00
4	Erosion Control	1	Lump sum	\$200.00	\$200.00
SUBTOTAL GRADING AND EXCAVATION					\$12,000.00
C. SITE DRAINAGE AND UTILITIES:					
5 - 10 PLAYGROUND					
1	Underdrainage and connections	1	Lump sum	\$3,000.00	\$3,000.00
SUBTOTAL SITE DRAINAGE AND UTILITIES					\$3,000.00
D. CONCRETE & SURFACING					
5 - 10 PLAYGROUND					
1	Furnish and install Asphalt Patch	136	SY	\$100.00	\$13,555.56
2	Repaint lines for blacktop games and line up circle for class	1	Lump sum	\$1,000.00	\$1,000.00
3	Furnish and install 6" x 18" Concrete curb around perimeter of play surface areas	460	Linear feet	\$24.00	\$11,760.00
4	School Entrance ADA walkway improvements	1	Lump sum	\$4,000.00	\$4,000.00
2-5 PLAYGROUND					
5	Furnish and install 6" x 18" Concrete curb around perimeter of play surface areas	110	Linear feet	\$24.00	\$2,640.00
6	Furnish and install 5" conc pad and bench pad at gate area	190	Square feet	\$7.00	\$1,330.00
SUBTOTAL CONCRETE & SURFACING					\$34,285.56
E. PLAY APPARATUS AREAS					
1	Apparatus: Furnish Kompan Supernova GXY944	1	Each	\$8,793.54	\$8,793.54
2	Apparatus: Furnish Kompan Nereide GXY937	1	Each	\$25,452.00	\$25,452.00
3	Apparatus: Furnish Landscape Structures Custom	1	Each	\$104,849.60	\$104,849.60
4	Apparatus: Furnish Landscape Structures Oodle Swing	1	Each	\$5,908.00	\$5,908.00
5	Reinstall existing individual Saddle spinner	1	Lump sum	\$400.00	\$400.00
6	Reinstall existing individual Stand-Up spinner	1	Lump sum	\$500.00	\$500.00
7	Apparatus: Clean and repaint existing play equipment (2-5 and 5-10)	1	Lump sum	\$2,500.00	\$2,500.00
SUBTOTAL PLAY APPARATUS AREAS					\$148,503.14
F. SITE FURNITURE AND IMPROVEMENT					
2-5 PLAYGROUND					
1	Reinstall existing bench	1	Lump sum	\$300.00	\$300.00
2	Furnish and install 6' hl. chain link fence	45	Linear feet	\$65.00	\$2,925.00
3	Furnish and install 6' hl. 6' w. chain link fence double gate	1	Each	\$800.00	\$800.00
4	Furnish and install 6' hl. 4' w. chain link fence single gate	1	Each	\$400.00	\$400.00
5	Repair and repaint existing chain link fence	1	Lump sum	\$2,000.00	\$2,000.00
SUBTOTAL SITE FURNITURE AND IMPROVEMENT					\$6,425.00

	G. SITE LANDSCAPE PLANTINGS				
	5 - 10 PLAYGROUND				
1	Furnish and install 3" mulch on planting bed	222	SY	\$7.00	\$1,555.56
2	Furnish and install topsoil mix	67	CY	\$50.00	\$3,333.33
	2-5 PLAYGROUND				
3	Tree pruning	1	Lump sum	\$500.00	\$500.00
	SUBTOTAL LANDSCAPE PLANTINGS				\$5,388.89
	TOTAL FOR WHITTIER ELEM PLAYGROUND IMPROVEMENTS				\$226,357.58
	10% contingency				\$22,635.76
	GRAND TOTAL				\$248,993.34

PLAYGROUND SURFACING - 5-10 Playground

1	Concrete base to receive synthetic rubber surfacing at all playground surfaces	7,150	Square feet	\$7.00	\$50,050.00
2	Synthetic rubber surfacing	7,150	Square feet	\$14.00	\$100,100.00
					\$150,150.00

PLAYGROUND SURFACING - 2-5 Playground

1	Concrete base to receive synthetic rubber surfacing at early childhood area	700	Square feet	\$7.00	\$4,900.00
2	Synthetic rubber surfacing at early childhood area	700	Square feet	\$14.00	\$9,800.00
					\$14,700.00

ALTERNATE #1 - GROUP SWING AT 2-5 PLAYGROUND

1	Concrete base to receive synthetic rubber surfacing at Group Swing (Oodle Swing) area	620	Square feet	\$7.00	\$4,340.00
2	Synthetic rubber surfacing at Group Swing (Oodle Swing) area	620	Square feet	\$14.00	\$8,680.00
3	Furnish and install 6" x 18" Concrete curb at Group Swing (Oodle Swing) area	80	lf	\$24.00	\$1,920.00
4	Furnish and install Landscape Structures Oodle Swing	1	ea	\$5,908.00	\$5,908.00
5	Deduct 6" x 18" Concrete curb	17	lf	\$24.00	\$408.00
	SUBTOTAL				\$20,440.00
	10% contingency				\$2,044.00
	TOTAL				\$22,484.00

ALTERNATE #2 - WATER SUPPLY FOR GARDEN*

1	Lump sum	\$5,000.00		\$5,000.00
---	----------	------------	--	-------------------

*After further study, estimates could change during construction document developments

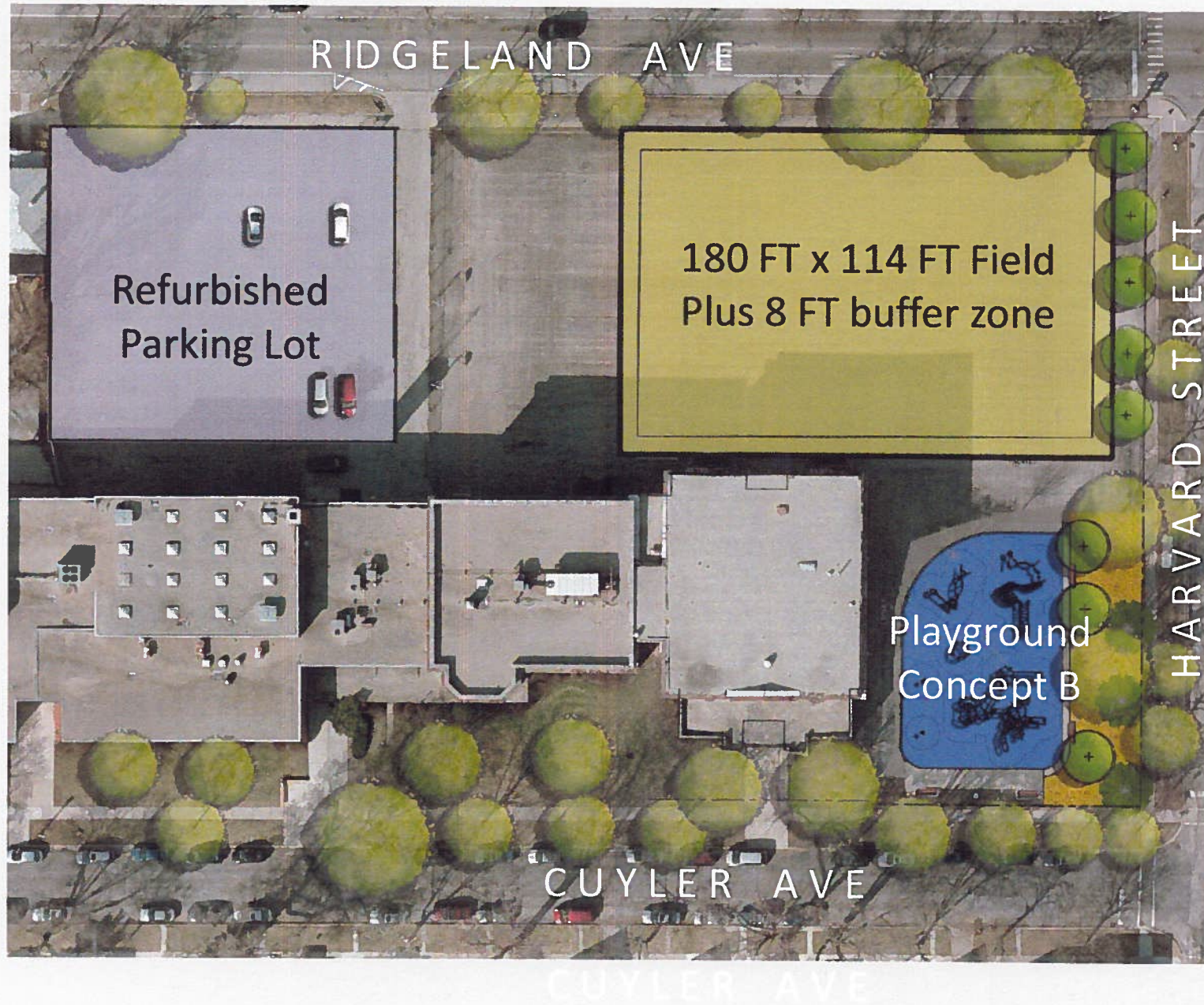
ALTERNATE #3 - OUTDOOR CLASSROOM

1	Removal of concrete pavement	78	Square Yard	\$36.00	\$2,800.00
2	SawCut concrete pavement	36	Linear feet	\$20.00	\$720.00
3	Salvage and install clean mulch (12" dep.)	78	Square Yard	\$16.00	\$1,244.44
	SUBTOTAL				\$4,764.44
	10% contingency				\$476.44
	TOTAL				\$5,240.89

ADDITIONAL LANDSCAPE ITEMS FOR 5-10 PLAYGROUND (NOT FOR BID - INFORMATION ONLY)

1	Furnish and install backed IPE bench 8' long	2	Each	\$1,680.00	\$3,320.00
2	Furnish and install backless IPE bench 8' long	2	Each	\$967.00	\$1,934.00
3	New trees	10	Each	\$450.00	\$4,500.00
4	New native grasses	500	sf	\$8.00	\$4,000.00
	SUBTOTAL				\$13,754.00
	10% contingency				\$1,375.40
	TOTAL				\$15,129.40

Irving Elementary Base Bid





Irving Elementary Base Bid Opinion of Probable Costs:

Refurbished Parking Lot:

Alternate II Mill and Relay Existing Parking Lot, New Fence & Concrete Trash Enclosure	\$81,240
-------------------------------------------------------------------------------------------------	-----------------

180 FT x 114 FT Field:

REMOVALS & EXCAVATION	\$280,370.00
ARTIFICIAL SURFACING	\$209,847.40
DRAINAGE & UTILITIES	\$105,755.00
NEW TREES & TOPSOIL	\$18,200.00
NEW FENCE	\$23,400.00
SUBTOTAL	\$637,572.40
10% CONTINGENCY	\$63,757.24
TOTAL FOR FIELD	\$701,329.64

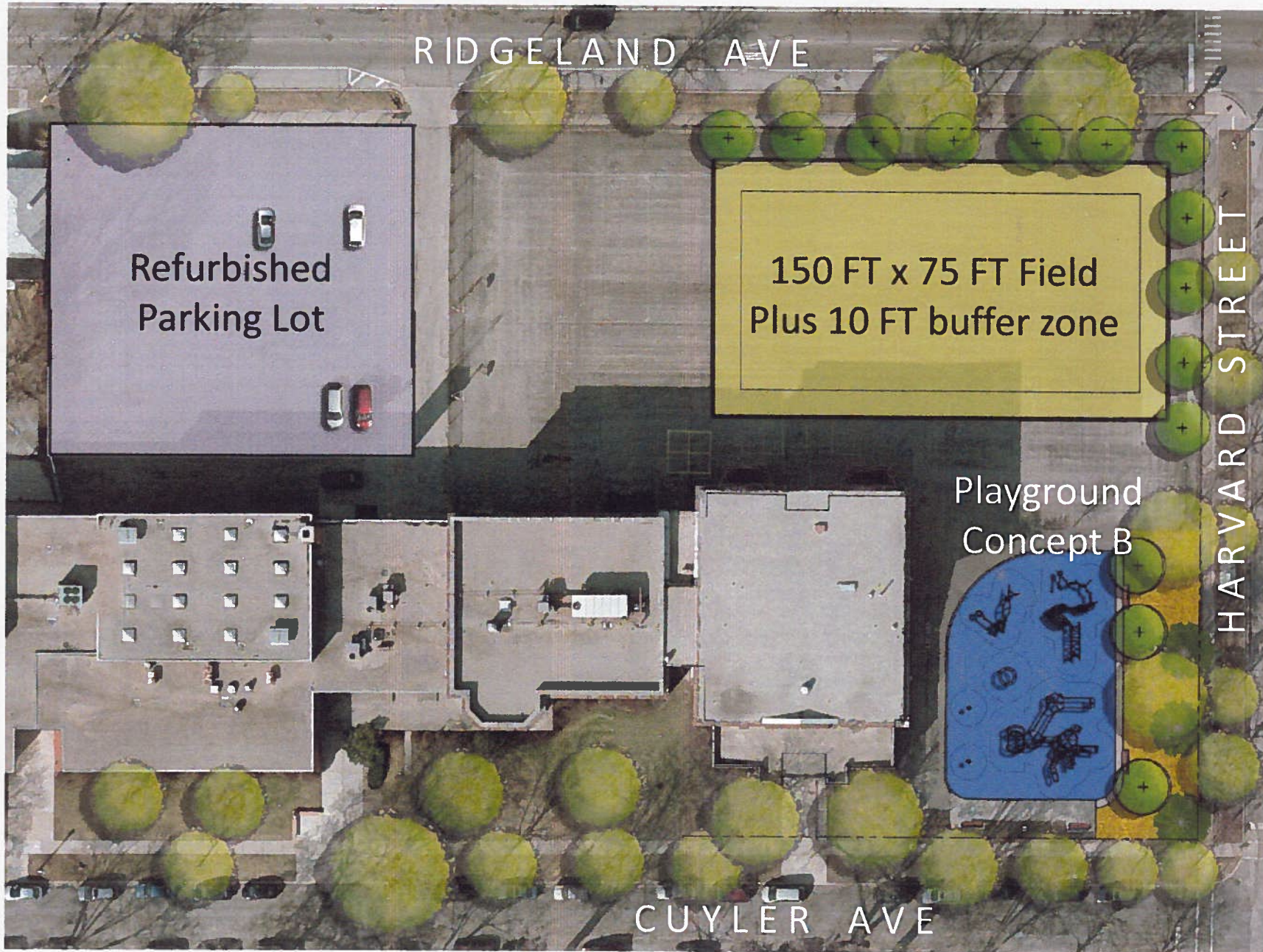
New Playground (Concept B):

REMOVALS	\$19,800
SITE GRADING, EXCAVATION, DRAINAGE & UTILITIES:	\$10,500
ASPHALT AND CONC. WALK	\$27,450
PLAY EQUIPMENT & RUBBER SURFACE	\$272,080
SITE FURNITURE & LANDSCAPES	\$18,872
SUBTOTAL	\$348,702
10% CONTINGENCY	\$34,870
TOTAL FOR IRVING SCHOOL PLAYGROUND IMPROVEMENTS	\$383,572

Irving Elementary Base Bid Opinion of Probable Cost: **\$1,166,141.64**

Add add'l \$160,000 for sport lighting

Alternate 1:





Alternate 1 Opinion of Probable Costs:

Refurbished Parking Lot:

Alternate II Mill and Relay Existing Parking Lot, New Fence & Concrete Trash Enclosure	\$81,240
-------------------------------------------------------------------------------------------------	-----------------

150 FT x 75 FT Field:

REMOVALS & EXCAVATION	\$230,950
ARTIFICIAL SURFACING	\$130,008
DRAINAGE & UTILITIES	\$68,562
NEW TREES & TOPSOIL	\$24,300
NEW FENCE	\$21,450
SUBTOTAL	\$475,270
10% CONTINGENCY	\$47,527
TOTAL FOR FIELD	\$522,797

New Playground (Concept B):

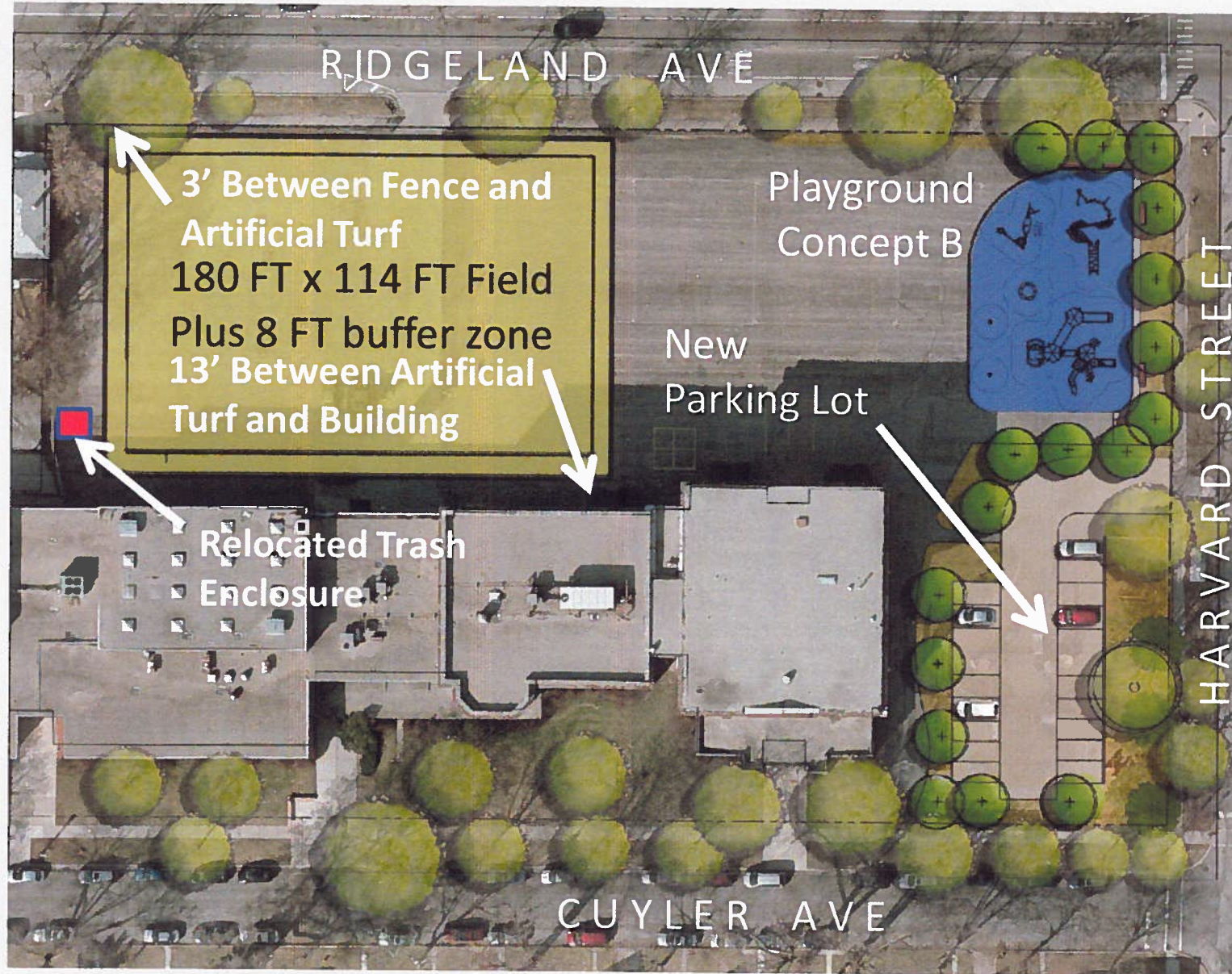
REMOVALS	\$19,800
SITE GRADING, EXCAVATION, DRAINAGE & UTILITIES:	\$10,500
ASPHALT AND CONC. WALK	\$27,450
PLAY EQUIPMENT & RUBBER SURFACE	\$272,080
SITE FURNITURE & LANDSCAPES	\$18,872
SUBTOTAL	\$348,702
10% CONTINGENCY	\$34,870
TOTAL FOR IRVING SCHOOL PLAYGROUND IMPROVEMENTS	\$383,572

Alternate 1 Opinion of Probable Costs:

\$987,609

Add add'l \$160,000 for sport lighting

Alternate 2:





Alternate 2 Opinion of Probable Costs:

Parking Lot (new):

REMOVALS & EXCAVATION	\$25,550.00
GRADING	\$6,000.00
DRAINAGE & UTILITIES	\$16,000.00
NEW PAVING, CURB AND GUTTER	\$60,031.25
NEW FENCE	\$14,300.00
NEW TREES, SOIL AND SOD	\$24,900.00
SUBTOTAL	\$146,781.25
10% CONTINGENCY	\$14,678.13
TOTAL FOR PARKING LOT	\$161,459.38

180 FT x 114 FT Field:

REMOVALS & EXCAVATION	\$280,370.00
ARTIFICIAL SURFACING	\$209,847.40
DRAINAGE & UTILITIES	\$105,755.00
NEW SHRUBS & TOPSOIL	\$7,056.00
NEW FENCE	\$23,400.00
RELOCATED TRASH	\$8,000.00
SUBTOTAL	\$634,428.40
10% CONTINGENCY	\$63,442.84
TOTAL FOR FIELD	\$697,871.24

New Playground (Concept B):

REMOVALS	\$56,050.00
SITE GRADING, EXCAVATION, DRAINAGE & UTILITIES	\$13,000.00
ASPHALT AND CONCRETE WALK	\$27,450.00
PLAY EQUIPMENT & RUBBER SURFACE	\$272,080.00
SITE FURNITURE & LANDSCAPES	\$23,471.00
NEW FENCE	\$14,300.00
SUBTOTAL	\$406,351.00
10% CONTINGENCY	\$40,635.10
TOTAL FOR PLAYGROUND	\$446,986.10

Alternate 2 Opinion of Probable Costs:

\$1,306,316.72

Add add'l \$160,000 for sport lighting