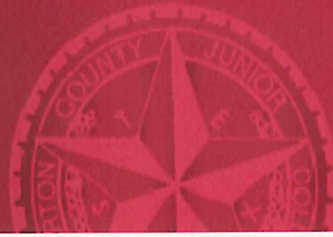




*Wharton County
Junior College*



Monthly Financial Reports

February 2024



Revenue & Expenditure Summary

	FISCAL 2024				FISCAL 2023			% OF PRIOR YR ACTUAL
	Current Month	Y-T-D ACTUAL	Budget	% of Budget	Y-T-D ACTUAL	Budget	% of Budget	
Fund 1000								
Revenues:								
State appropriations	\$ 2,326,314	\$ 6,978,942	\$ 9,305,255	75.00%	\$ 4,001,261	\$ 9,305,255	43.00%	174%
Tuition and Fees	11,452	17,008,895	20,749,657	81.97%	14,988,523	19,071,607	78.59%	113%
Advalorem Taxes	3,697,938	9,448,450	9,976,525	94.71%	8,503,835	8,756,525	97.11%	111%
Mandatory Transfers	-	-	956,147	0.00%	-	1,350,273	0.00%	0%
Non-mandatory Transfers	-	-	2,450,069	0.00%	1,369,620	2,185,483	62.67%	0%
Other Revenues	245,302	1,309,655	1,031,516	126.96%	73,208	684,968	10.69%	1789%
Total Revenues	6,281,006	34,745,942	44,469,169	78.13%	28,936,447	41,354,111	69.97%	120%
Expenditures:								
Salaries	1,710,579	10,345,781	22,806,173	45.36%	10,102,315	22,934,708	44.05%	102%
Employee Benefits	472,882	2,357,625	6,148,161	38.35%	2,248,895	6,045,646	37.20%	105%
Capital Expenditures	120,805	749,712	2,527,802	29.66%	157,285	903,540	17.41%	477%
Mandatory Transfers	-	-	-	-	184,509	367,800	50.17%	0%
Non-mandatory Transfers	-	-	-	-	-	-	-	0%
Other Expenditures	768,354	5,273,352	12,987,033	40.60%	5,137,208	11,102,417	46.27%	103%
Total expenditures	3,072,620	18,726,470	44,469,169	42.11%	17,830,212	41,354,111	43.12%	105%
Net increase/ (decrease) in net assets	\$ 3,208,386	\$ 16,019,472			\$ 11,106,235			
Less Outstanding encumbrances		(3,692,282)			(1,796,235)			
Net increase less encumbrances		\$ 12,327,190			\$ 9,310,000			

* Note: Net student receivables in the amount of \$ 1,280,176.22 are currently outstanding. Tuition and fees are subject to collection in future periods.

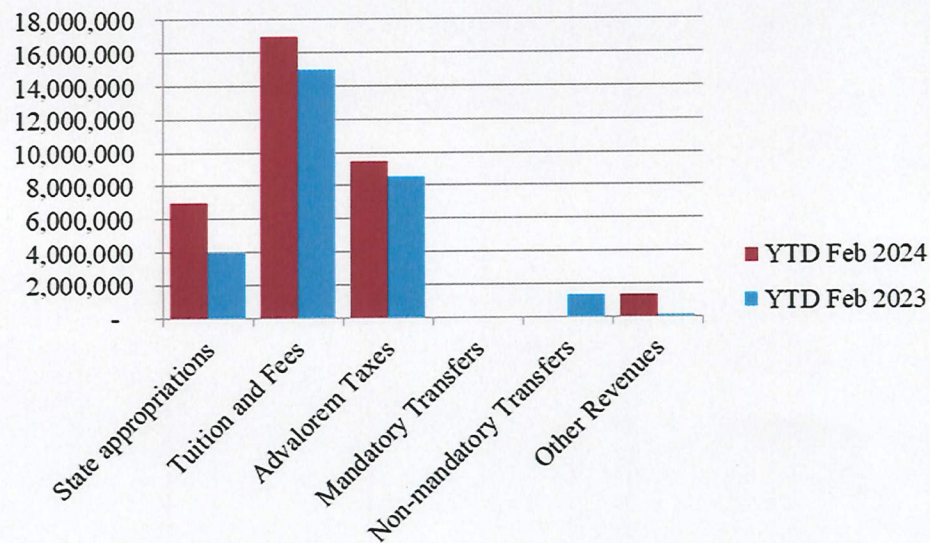


Wharton County
Junior College



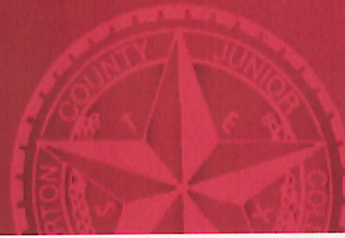
Year to Date Revenues

- College has received 75% of FY24 state appropriations under new 3-pay schedule

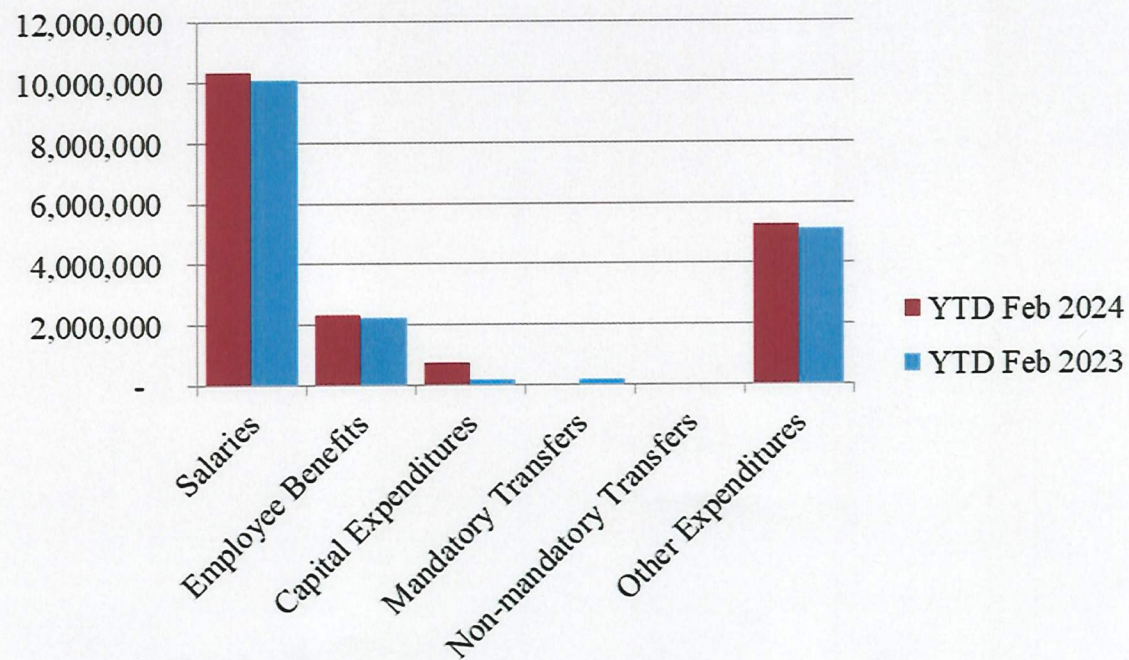




Wharton County
Junior College

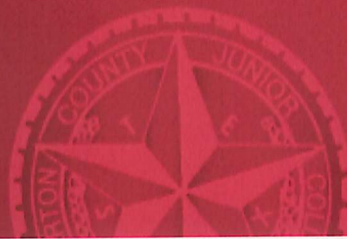


Year to Date Expenses

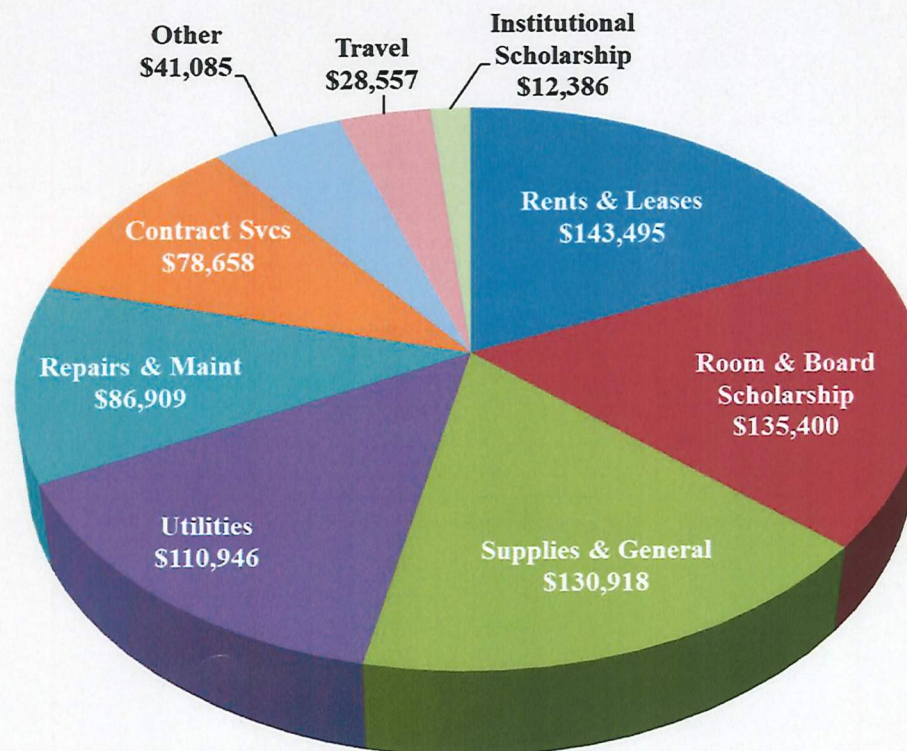




**Wharton County
Junior College**

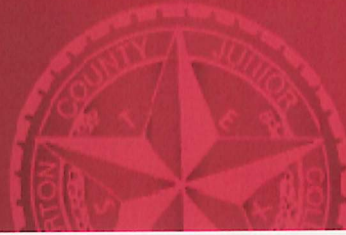


Other Expenses for February



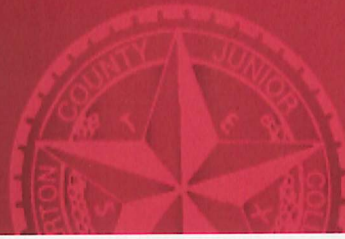


**Wharton County
Junior College**

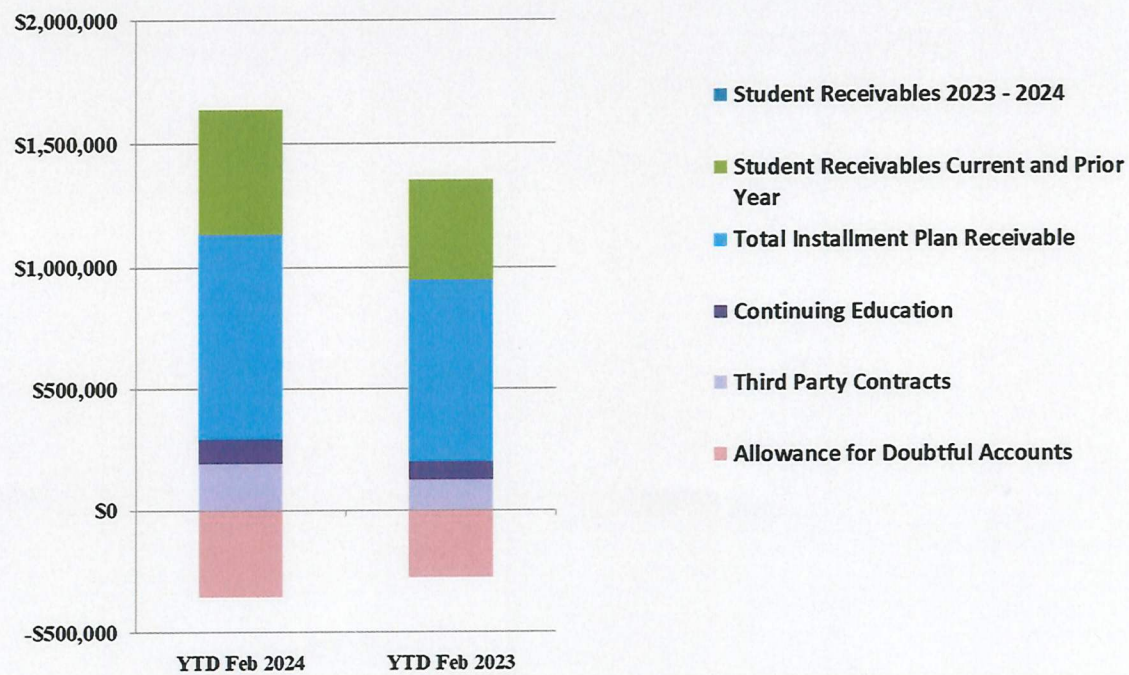


Analysis of Student Receivable Outstanding As of February 29, 2024

	2024	2023
Student Receivables Current and Prior Yr.	\$ 502,149.25	\$ 407,521.14
Installment Plan Receivable Due Fall Semester	\$ 90,763.72	\$ 101,374.54
Installment Plan Receivable Due Spring Semester	628,340.31	565,226.30
Installment Plan Receivable Summer I & II	0.00	0.00
Installment Plan Receivable Prior Years	120,110.21	76,929.23
Total Installment Plan Receivable	\$ 839,214.24	\$ 743,530.07
Third Party Contracts Receivable	\$ 194,017.86	\$ 127,616.67
Continuing Education Receivable	100,887.98	75,261.00
Allowance for Doubtful Accounts	(356,093.11)	(275,509.62)
Net Accounts Receivable	\$ 1,280,176.22	\$ 1,078,419.26



AR by Category



COMBINED BALANCE SHEET

(Funds included: GOVERNMENTAL FUND TYPES)

Governmental Fund Types

	Auxiliary Enterprise	Current Unrestricted	Restricted Funds	Current Year 2024	Prior Year 2023
ASSETS and OTHER DEBITS:					
ASSETS:					
Cash	312,484	1,977,277	-537,954	1,751,807	2,412,482
Cash Investments	712,155	30,704,339	1,657,236	33,073,730	26,549,592
Accounts Receivable	50,741	1,343,106	5,681	1,399,527	1,182,115
Taxes Receivable		525,114	--	525,114	501,583
Local, St & Fed Agency Receivable		--	436,608	436,608	421,946
Deposits		--	--	--	--
Due From Other Funds		311,235	179,313	490,548	362,920
Prepaid Expense		5,062	--	5,062	--
Property, Plant & Equipment		--	--	--	--
Deferred Outflows		10,547,526	--	10,547,526	9,340,694
TOTAL ASSETS AND OTHER DEBITS:	1,075,379	45,413,659	1,740,884	48,229,922	40,771,333
Liabilities, equity and other credits					
LIABILITIES:					
Accounts Payable	5,680	123,527	896	130,103	131,068
Employee Benefits Payable	615	182,939	--	183,554	198,974
Payroll Taxes Payable		-6,416	--	-6,416	194
Accrued Liabilities		--	--	--	--
Deferred Revenue		--	530,803	530,803	503,385
Long Term Debt		--	--	--	--
Net Pension Liability		8,848,857	--	8,848,857	4,103,835
Net OPEB Liability		25,815,864	--	25,815,864	32,567,646
Lease/SBITA Liab - Long Term		--	--	--	--
Deposits Payable	72,352	11,878	--	84,230	78,230
Due To Other Funds		179,313	311,235	490,548	362,920
Scholarships-Designated Donations		--	11,866	11,866	2,349
Scholarships-Non-designated		--	632,492	632,492	598,866
Donatio		--	--	--	--
Deferred Inflows		13,091,737	--	13,091,737	9,710,668
TOTAL LIABILITIES:	78,647	48,247,699	1,487,292	49,813,638	48,258,135
EQUITY AND OTHER CREDITS:					
Control Accounts		--	--	--	--
Fund Balances		--	--	--	--
Prior Year Fund Balance		-19,313,888	--	-19,313,888	-19,313,888
Endowment Fund-Original		--	--	--	--
Endowment Fund-Income		--	--	--	--

REPORT FGRCOBS
COAS: W
FISCAL YEAR: 24

Wharton County Junior College
Combined Balance Sheet--All Fund Types and Account Groups
29-Feb-2024
(With comparative totals for 28-Feb-2023)
(amounts expressed in dollars)

RUN DATE: 03/18/2024
TIME: 01:09:57 PM
PAGE: 2

Governmental Fund Types

	Auxiliary Enterprise	Current Unrestricted	Restricted Funds	Current Year 2024	Prior Year 2023
<hr/>					
EQUITY AND OTHER CREDITS:					
FB Professional Development		--	--		
FB Salary Equity		--	--		
FB Capital Equipment		--	--		
FB Investment Gain And Loss		--	--		
Fund Balance Receivables		--	--	-	-
Reserved-Undesignated		--	--		
FBTC Operating Fund Balance		--	--		
Plant Fund Balance		--	--		
Bond Fund Balance		--	--		
Scholarship		--	--		
Fund Balance-Rounding Diff		--	-	-	-
Fund Balances:					
Reserve for Encumbrance	96,240	3,692,282	254,833	4,043,354	2,364,954
Fund Balance	900,493	12,787,567	-1,242	13,686,818	9,462,132
Reserve For Operations		--	--		
TOTAL EQUITY AND OTHER CREDITS:	996,733	-2,834,040	253,591	-1,583,716	-7,486,803
<hr/>					
TOTAL LIABILITIES, EQUITY AND OTHER CREDITS:	1,075,379	45,413,659	1,740,884	48,229,922	40,771,333
<hr/>					
=====					

Proprietary Fund Types

	Agency Funds	Current Year 2024	Prior Year 2023
<hr/>			
ASSETS and OTHER DEBITS:			
ASSETS:			
Cash	84,465	84,465	81,550
Cash Investments	171,330	171,330	162,700
Accounts Receivable	-	-	-
Taxes Receivable			
Local, St & Fed Agency Receivable			
Deposits			
Due From Other Funds			
Prepaid Expense			
Property, Plant & Equipment			
Deferred Outflows			
TOTAL ASSETS AND OTHER DEBITS:	255,795	255,795	244,250
<hr/>			
Liabilities, equity and other credits			
LIABILITIES:			
Accounts Payable	2,412	2,412	-
Employee Benefits Payable	-	-	-
Payroll Taxes Payable			
Accrued Liabilities			
Deferred Revenue			
Long Term Debt			
Net Pension Liability			
Net OPEB Liability			
Lease/SBITA Liab - Long Term			
Deposits Payable	248,708	248,708	241,230
Due To Other Funds			
Scholarships-Designated Donations			
Scholarships-Non-designated			
Donatio			
Deferred Inflows			
TOTAL LIABILITIES:	251,120	251,120	241,230
<hr/>			
EQUITY AND OTHER CREDITS:			
Control Accounts	4,674	4,674	3,021
Fund Balances			
Prior Year Fund Balance			
Endowment Fund-Original			
Endowment Fund-Income			

REPORT FGRCOBS
COAS: W
FISCAL YEAR: 24

Wharton County Junior College
Combined Balance Sheet--All Fund Types and Account Groups
29-Feb-2024
(With comparative totals for 28-Feb-2023)
(amounts expressed in dollars)

RUN DATE: 03/18/2024
TIME: 01:09:57 PM
PAGE: 4

Proprietary Fund Types

	Agency Funds	Current Year 2024	Prior Year 2023
EQUITY AND OTHER CREDITS:			
FB Professional Development			
FB Salary Equity			
FB Capital Equipment			
FB Investment Gain And Loss			
Fund Balance Receivables			
Reserved-Undesignated			
FBTC Operating Fund Balance			
Plant Fund Balance			
Bond Fund Balance			
Scholarship			
Fund Balance-Rounding Diff			
Fund Balances:			
Reserve for Encumbrance			
Fund Balance			
Reserve For Operations			
TOTAL EQUITY AND OTHER CREDITS:	4,674	4,674	3,021
TOTAL LIABILITIES, EQUITY AND OTHER CREDITS:	255,795	255,795	244,250
	=====	=====	=====

REPORT FGRCOBS
COAS: W
FISCAL YEAR: 24

Wharton County Junior College
Combined Balance Sheet--All Fund Types and Account Groups
29-Feb-2024
(With comparative totals for 28-Feb-2023)
(amounts expressed in dollars)

RUN DATE: 03/18/2024
TIME: 01:09:57 PM
PAGE: 5

Fiduciary Fund Types

	Endowment Funds	Quasi Endowment Fund	Current Year 2024	Prior Year 2023
ASSETS and OTHER DEBITS:				
ASSETS:				
Cash	278,309	--	278,309	240,818
Cash Investments	13,079,966	--	13,079,966	12,205,430
Accounts Receivable	12,510	--	12,510	12,510
Taxes Receivable		--		
Local, St & Fed Agency Receivable		--		
Deposits		--		
Due From Other Funds		--		
Prepaid Expense		--		
Property, Plant & Equipment		--		
Deferred Outflows		--		
TOTAL ASSETS AND OTHER DEBITS:	13,370,786		13,370,786	12,458,758
Liabilities, equity and other credits				
LIABILITIES:				
Accounts Payable		--		
Employee Benefits Payable		--		
Payroll Taxes Payable		--		
Accrued Liabilities		--		
Deferred Revenue		--		
Long Term Debt		--		
Net Pension Liability		--		
Net OPEB Liability		--		
Lease/SBITA Liab - Long Term		--		
Deposits Payable		--		
Due To Other Funds		--		
Scholarships-Designated Donations		--		
Scholarships-Non-designated		--		
Donatio				
Deferred Inflows		--		
TOTAL LIABILITIES:				
EQUITY AND OTHER CREDITS:				
Control Accounts		--		
Fund Balances		--		
Prior Year Fund Balance		--		
Endowment Fund-Original		--		
Endowment Fund-Income		--		

REPORT FGRCOBS
COAS: W
FISCAL YEAR: 24

Wharton County Junior College
Combined Balance Sheet--All Fund Types and Account Groups
29-Feb-2024
(With comparative totals for 28-Feb-2023)
(amounts expressed in dollars)

RUN DATE: 03/18/2024
TIME: 01:09:57 PM
PAGE: 6

Fiduciary Fund Types

	Endowment Funds	Quasi Endowment Fund	Current Year 2024	Prior Year 2023
EQUITY AND OTHER CREDITS:				
FB Professional Development		--		
FB Salary Equity		--		
FB Capital Equipment		--		
FB Investment Gain And Loss		--		
Fund Balance Receivables		--		
Reserved-Undesignated		--		
FBTC Operating Fund Balance		--		
Plant Fund Balance		--		
Bond Fund Balance		--		
Scholarship		--		
Fund Balance-Rounding Diff		--		
Fund Balances:				
Reserve for Encumbrance		--		
Fund Balance	13,370,786	--	13,370,786	12,458,758
Reserve For Operations		--		
TOTAL EQUITY AND OTHER CREDITS:	13,370,786		13,370,786	12,458,758
TOTAL LIABILITIES, EQUITY AND OTHER CREDITS:	13,370,786		13,370,786	12,458,758
	=====	=====	=====	=====

Account Groups						
	Investment in Plant Fund	Debt Retirement Bond Fund	Unexpended Plant Fund	Repair and Replacement	Current Year 2024	Prior Year 2023
ASSETS and OTHER DEBITS:						
ASSETS:						
Cash		239	-7,000,028	7,118,933	119,144	231,494
Cash Investments		414,527	11,434,304	--	11,848,830	9,427,300
Accounts Receivable		--	23,529	--	23,529	23,529
Taxes Receivable		--	--	--	--	--
Local, St & Fed Agency Receivable		--	--	--	--	--
Deposits		--	--	--	--	--
Due From Other Funds		--	--	--	--	--
Prepaid Expense		--	--	--	--	--
Property, Plant & Equipment	46,227,761	--	--	--	46,227,761	46,515,765
Deferred Outflows		--	--	--	--	--
TOTAL ASSETS AND OTHER DEBITS:	46,227,761	414,765	4,457,805	7,118,933	58,219,264	56,198,088
Liabilities, equity and other credits						
LIABILITIES:						
Accounts Payable		--	--	--	--	--
Employee Benefits Payable		--	--	--	--	--
Payroll Taxes Payable		--	--	--	--	--
Accrued Liabilities	1,622,299	--	--	--	1,622,299	1,339,512
Deferred Revenue		--	--	--	--	--
Long Term Debt		--	--	--	--	365,584
Net Pension Liability		--	--	--	--	--
Net OPEB Liability		--	--	--	--	--
Lease/SBITA Liab - Long Term	7,798,442	--	--	--	7,798,442	8,988,334
Deposits Payable		--	--	--	--	--
Due To Other Funds		--	--	--	--	--
Scholarships-Designated Donations		--	--	--	--	--
Scholarships-Non-designated		--	--	--	--	--
Donatio		--	--	--	--	--
Deferred Inflows		--	--	--	--	--
TOTAL LIABILITIES:	9,420,741				9,420,741	10,693,430
EQUITY AND OTHER CREDITS:						
Control Accounts		--	--	--	--	--
Fund Balances		--	--	--	--	--
Prior Year Fund Balance		--	--	--	--	--
Endowment Fund-Original		--	--	--	--	--
Endowment Fund-Income		--	--	--	--	--

Account Groups

	Investment in Plant Fund	Debt Retirement Bond Fund	Unexpended Plant Fund	Repair and Replacement	Current Year 2024	Prior Year 2023
EQUITY AND OTHER CREDITS:						
FB Professional Development		--	--	--		
FB Salary Equity		--	--	--		
FB Capital Equipment	39,839,326	--	--	--	39,839,326	37,451,486
FB Investment Gain And Loss		--	--	--		
Fund Balance Receivables		--	--	--		
Reserved-Undesignated		--	--	--		
FBTC Operating Fund Balance		--	--	--		
Plant Fund Balance		--	--	--		
Bond Fund Balance		--	--	--		
Scholarship		--	--	--		
Fund Balance-Rounding Diff		--	--	--		
Fund Balances:						
Reserve for Encumbrance		--	--	--		19,574
Fund Balance	-1,284,835	414,765	3,394,552	6,434,716	8,959,198	8,033,598
Reserve For Operations		--	--	--		
TOTAL EQUITY AND OTHER CREDITS:	38,554,491	414,765	3,394,552	6,434,716	48,798,524	45,504,658
TOTAL LIABILITIES, EQUITY AND OTHER CREDITS:	47,975,231	414,765	3,394,552	6,434,716	58,219,264	56,198,088
	=====	=====	=====	=====	=====	=====

Memorandum Only

	Current Year 2024	Prior Year 2023
ASSETS and OTHER DEBITS:		
ASSETS:		
Cash	2,233,725	2,966,344
Cash Investments	58,173,857	48,345,023
Accounts Receivable	1,435,566	1,218,154
Taxes Receivable	525,114	501,583
Local, St & Fed Agency Receivable	436,608	421,946
Deposits		
Due From Other Funds	490,548	362,920
Prepaid Expense	5,062	
Property, Plant & Equipment	46,227,761	46,515,765
Deferred Outflows	10,547,526	9,340,694
TOTAL ASSETS AND OTHER DEBITS:	120,075,767	109,672,429
Liabilities, equity and other credits		
LIABILITIES:		
Accounts Payable	132,515	131,068
Employee Benefits Payable	183,554	198,974
Payroll Taxes Payable	-6,416	194
Accrued Liabilities	1,622,299	1,339,512
Deferred Revenue	530,803	503,385
Long Term Debt		365,584
Net Pension Liability	8,848,857	4,103,835
Net OPEB Liability	25,815,864	32,567,646
Lease/SBITA Liab - Long Term	7,798,442	8,988,334
Deposits Payable	332,938	319,460
Due To Other Funds	490,548	362,920
Scholarships-Designated Donations	11,866	2,349
Scholarships-Non-designated	632,492	598,866
Donatio		
Deferred Inflows	13,091,737	9,710,668
TOTAL LIABILITIES:	59,485,499	59,192,795
EQUITY AND OTHER CREDITS:		
Control Accounts	4,674	3,021
Fund Balances		
Prior Year Fund Balance	-19,313,888	-19,313,888
Endowment Fund-Original		
Endowment Fund-Income		
FB Professional Development		
FB Salary Equity		
FB Capital Equipment	39,839,326	37,451,486
FB Investment Gain And Loss		

REPORT FGRCOBS
COAS: W
FISCAL YEAR: 24

Wharton County Junior College
Combined Balance Sheet--All Fund Types and Account Groups
29-Feb-2024
(With comparative totals for 28-Feb-2023)
(amounts expressed in dollars)

RUN DATE: 03/18/2024
TIME: 01:09:57 PM
PAGE: 10

Memorandum Only

	Current Year 2024	Prior Year 2023
Fund Balance Receivables	-	-
Reserved-Undesignated		
FBTC Operating Fund Balance		
Plant Fund Balance		
Bond Fund Balance		
Scholarship		
Fund Balance-Rounding Diff	-	-
Fund Balances:		
Reserve for Encumbrance	4,043,354	2,384,528
Fund Balance	36,016,801	29,954,488
Reserve For Operations		
TOTAL EQUITY AND OTHER CREDITS:	60,590,268	50,479,634
 TOTAL LIABILITIES, EQUITY AND OTHER CREDITS:	120,075,767	109,672,429
	=====	=====