

TODAY'S STUDENTS, TOMORROW'S WORKFORCE



Batesville
High School

BATESVILLE SCHOOL DISTRICT



PIONEER NATION IS.....

- Largest School in Independence County
- 6 schools - Community Schools Model 
- Enrollment - 928 (Grades 9-12)
- 56% Free/Reduced Lunch
- 36% Minority
- Community Business & Industry Partner
- ForwARd Community
- Impact Independence



WHAT ARE WE ASKING FOR?

- equitable, sustainable opportunity to grow the workforce for our community in a timely manner
- freedom to fearlessly meet our community's demands, personalize the model for each student based on where they are and provide security for us to move forward knowing that we are able to grow the academies based on student and community needs

CRYSTAL JOHNSON
BATESVILLE AREA CHAMBER OF COMMERCE
PRESIDENT/CEO



WHY CONVERSION CHARTER?

RESOURCES TO MEET THE NEEDS OF TOMORROW

- OUR COMMUNITY IS REQUESTING QUALIFIED WORKERS
- CREATE PERSONALIZED EDUCATIONAL PLANS BASED ON STUDENT/COMMUNITY REQUESTS
- PROVIDE & RETAIN QUALIFIED WORKERS FOR COMMUNITY WORKFORCE
- MEET STUDENT POPULATIONS NEEDS IN A TIMELY MANNER
- SPECIALIZE IN FILLING CURRICULUM GAPS BASED ON LOCAL INDUSTRY RECOMMENDATION
- PROVIDE WORKFORCE CREDENTIALS TO ALL STUDENTS

We know that we can prepare these students for life through E3 Internships and student success plans.

We need the ability to meet the needs of now and EVOLVE to tomorrow.

Evolve-develop gradually, especially from a simple to a more complex form



Batesville
High School

BATESVILLE SCHOOL DISTRICT

PERSONALIZED PATHWAY SERVICES

- EXPLORE - CAREER EXPLORATION THROUGHOUT ELEMENTARY & JUNIOR HIGH SCHOOL
- DISCOVER - GRADES 9-11 BUILD UPON STUDENT SUCCESS PLANS & DISCOVER PIONEER ACADEMIES
- LEAD - GRADE 12 LEADERS IN THE SCHOOL AS WELL AS THE COMMUNITY THROUGH PERSONALIZED INTERNSHIPS

ANGELA CHAPMAN

**MSN, RN, WHITE RIVER HEALTH SYSTEM (WRHS)
EDUCATION DEPARTMENT MANAGER**



PIONEER ACADEMIES

- EXPANDING CAREER & TECHNICAL EDUCATION PATHWAYS
- RESPONDING TO STUDENT INTEREST & COMMUNITY NEEDS
- ACQUIRING INNOVATIVE PATHWAYS FOR PHASE 1
 - MEDICAL ASSISTANT
 - SURGICAL TECH
 - MEDICAL PRE-PROFESSIONAL
 - SPORTS MEDICINE
 - AVIATION, INCLUDING DRONES & PILOT TRAINING
 - VIDEO JOURNALISM & PRODUCTION

E3 INTERNSHIP & APPRENTICESHIP PROGRAM

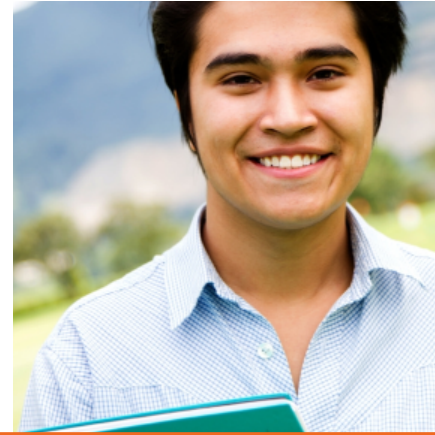
- PAID WORK-BASED LEARNING EXPERIENCES
- MULTIPLE BUSINESS & INDUSTRY PARTNERSHIPS
- NATIONAL APPRENTICESHIP TRAINING FOUNDATION
- PIPELINE FOR COMMUNITY WORKFORCE
- STUDENT MENTORING, TRAINING, & WORK EXPERIENCE
- EXECUTIVE SKILLS - PEAK PERFORMANCE U

EDUCATIONAL SCENARIOS



Student A

- BHS Graduate
- Aptitude for healthcare profession career
- Entrance to UACCB
- Begin healthcare coursework after graduation



Student B

- BHS Graduate
- Medical Assistant Pioneer Future Academy Endorsed
- CPR, Stop The Bleed, OSHA 10 & HIPPA Certified
- CNA Assessment provided by WRMC after graduation
- Preferential Interview at WRMC after graduation
- Employed by WRMC as Medical Assistant
- Scholarship from WRMC for LPN school



Student C

- BHS Graduate
- Medical Pre-Professional Future Academy Endorsed
- CPR, Stop The Bleed, OSHA 10, Pharmacy Tech, & HIPPA Certified
- Immersed in Professional Medical Career Lab Simulations & job shadowing
- Networking with Medical Professionals in hospital setting
- WRMC Pharmacy Tech
- Entrance to Lyon College
- Pre-Pharmacy Major

Questions?