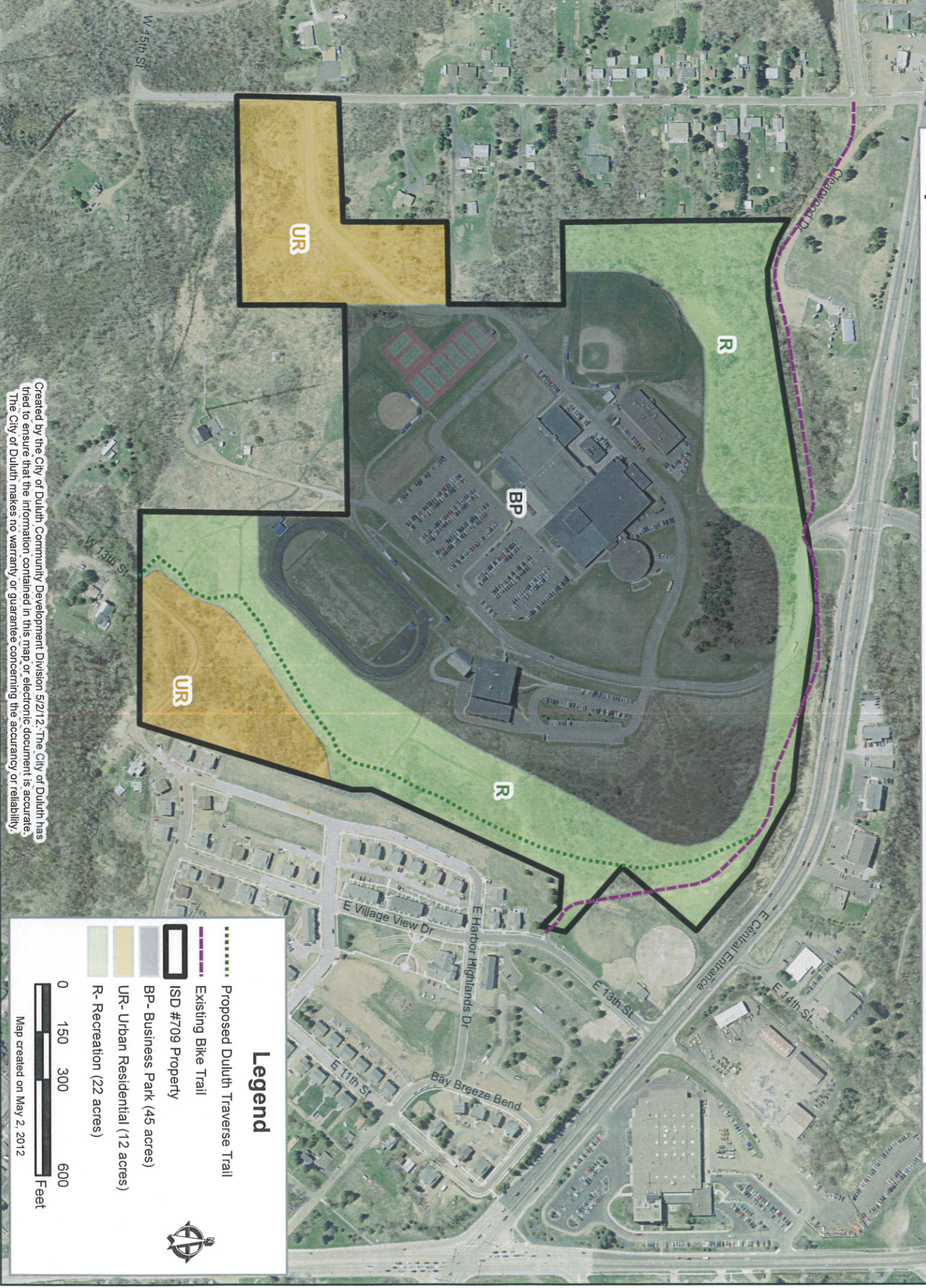


Proposed Recommended Future Land Use for Former Central High School Site



Legend

- ⋯⋯⋯ Proposed Duluth Traverse Trail
- - - - - Existing Bike Trail
- ISD #709 Property
- BP - Business Park (45 acres)
- UR - Urban Residential (12 acres)
- R - Recreation (22 acres)



Created by the City of Duluth, Community Development Division 5/2/12. The City of Duluth has tried to ensure that the information contained in this map or electronic document is accurate. The City of Duluth makes no warranty or guarantee concerning the accuracy or reliability.

Map created on May 2, 2012