
TRANSPORTATION SUPPLEMENTAL PLANS FOR 2012-13

POLICY ISSUE/SITUATION:

Oregon Revised Statute (ORS 327.006) establishes the criteria for "approved transportation costs" that are reimbursable by the State at 70% of those costs. The principal component of these approved costs is the daily home-to-school and back to home transportation for elementary students that live at least 1.5 miles from school. The statute also includes, when approved, reimbursable costs for the transportation of students who live within the respective 1.0 and 1.5 mile standards, if such transportation is required for "health or safety reasons." However, to qualify for reimbursement, lesser distance transportation routes must be submitted to, and approved annually by the Oregon State Board of Education as local district "supplemental transportation plans".

BACKGROUND INFORMATION:

The most frequent reason for providing home-to-school-to home transportation for students within the 1.0 and 1.5 mile standards is the lack of sufficient infrastructure for a safe walkway (e.g. no sidewalks, no designated walkways away from traffic, requirements to cross major traffic arterials or highways, construction that disrupts foot traffic on such sidewalks or walkways, etc.) Annually, Transportation Department staff evaluates and recommends either adding to, or withdrawing neighborhoods from prior supplemental plans for a given school year. Those recommendations are initially reviewed by Transportation safety staff, then followed by on-site visits by the Administrator for Transportation, the District's Safety and Security Office and the Deputy Superintendent for Operations and Support Services.

Included with this Board Situation are the proposed *Transportation Supplemental Plan Changes for the 2012-2013* school year. Recommendations brought forward that propose the removal of a stop are only considered if the staff is fully confident that there is no impact on student safety.

It is important to recognize that certain recommended plans may not be fully implemented or may be otherwise modified if the anticipated additional infrastructure is not constructed or other future construction projects result in creating an unsafe walkway within the 1.0 or 1.5 mile standards.

Immediately following the April 3, 2012 School Board meeting, staff will meet with building administrators and affected parents and then request Board approval of the final recommended plans at the May 7, 2012 meeting.

RECOMMENDATION:

(12-149) BE IT RESOLVED that the School Board authorizes staff to communicate and discuss proposed Transportation Supplemental Plans with families that reside in the impacted areas.

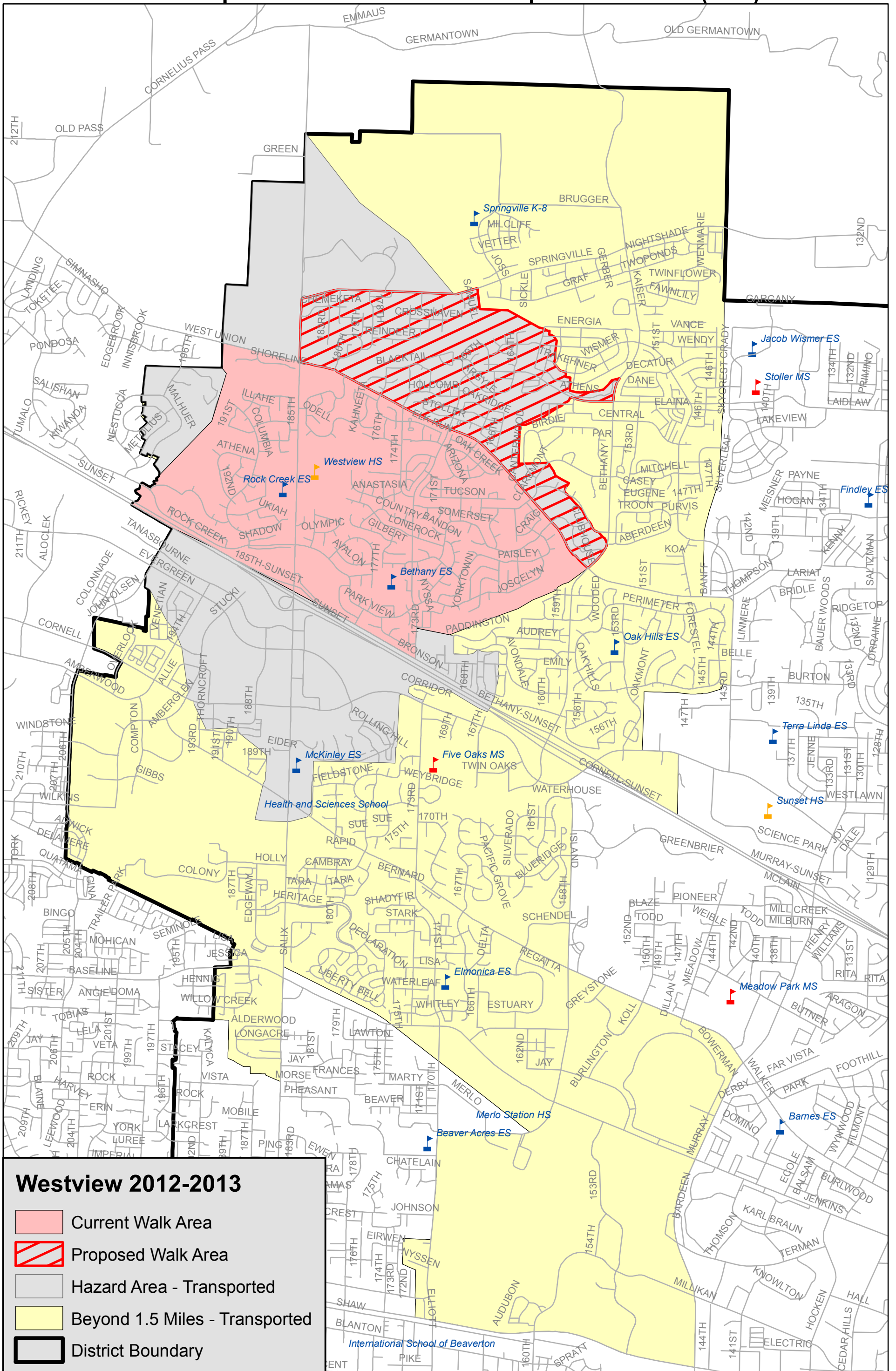
Proposed Transportation Supplemental Plan Changes for 2012-2013

Each year the Transportation Department reviews neighborhoods to determine if the walk areas within one mile for elementary and one and a half mile for secondary grades are safe to walk to and from school. Emphasis is placed on reviewing areas where infrastructure changes have been made to roadways and walk paths.

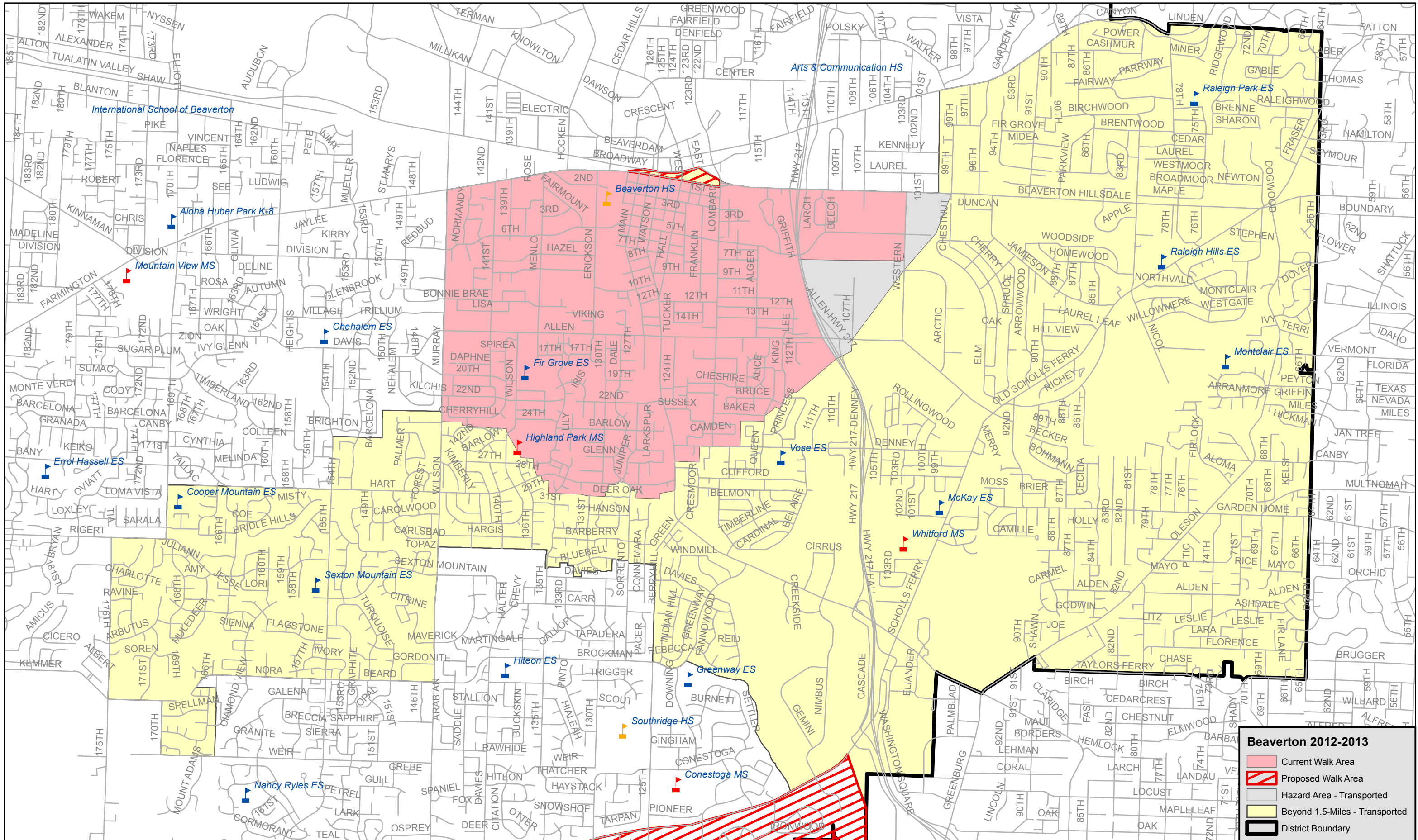
The following list contains the recommended changes to the Supplemental Plan for the 2012-2013 school year. Please refer to the attached maps for each school.

School	Description of Area	Rationale	Add / Remove	Students Affected
Beaverton HS	BHS attendance area north of Farmington Rd	It is safe for students to cross Farmington Rd via Watson Ave and Hall Blvd with controlled intersections. The area is mostly commercial with a few residential units above shops.	Remove	0 at 0 stops
Meadow Park MS	Richland Terrace Apts, 15195 SW Walker Rd	A new sidewalk along the north side of SW Walker Rd west of 150 th Ave has made this a safe walking area.	Remove	3 at 1 stop
Sunset HS	Timberland area east of NW Barnes Rd and south of Cornell Rd	Asphalt and striping has been added to the shoulder walk area on the south side of Cornell which provides a continuous safe walk path from the Cornell-Saltzman intersection to NW 118 th Ave.	Remove	8 at 1 stop
Sunset HS	Cedar Mill Village Apt on north side of Cornell Rd west of NW 119 th Ave.	Students have a safe walk path on the south side of NW Cornell Rd to NW 119 th where they cross to the north side of NW Cornell Rd.	Remove	16 at 1 stop
Westview HS	Neighborhoods north of NW West Union Rd between power line greenspaces located east and west of NW Laidlaw Rd.	Students can cross West Union at NW Laidlaw Road controlled intersection.	Remove	125 at 7 stops

Westview High School 2012 Proposed Addition to No Transportation Zone (NTZ)



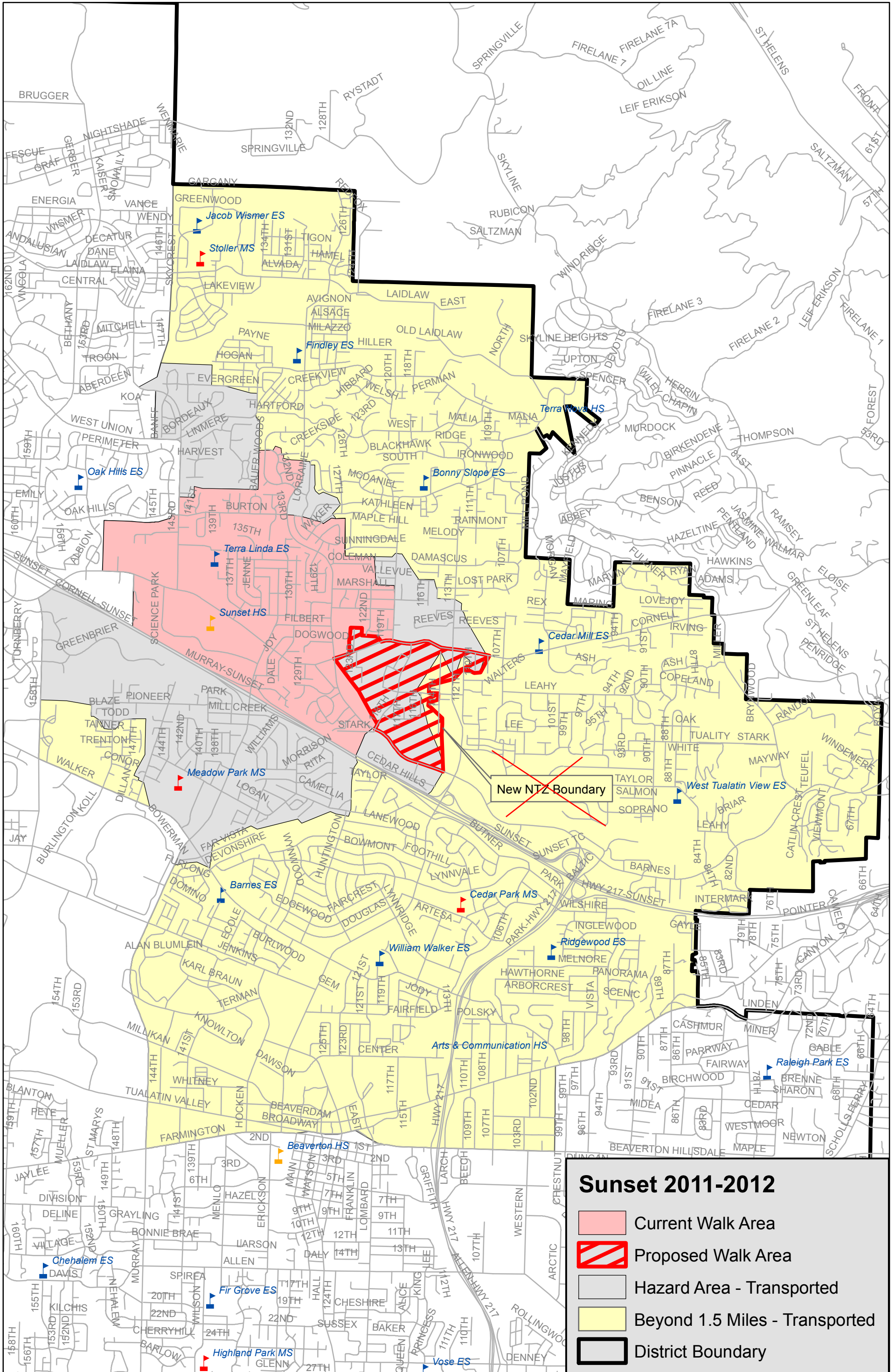
Beaverton High School 2012 Proposed Addition to No Transportation Zone (NTZ)



2012

Sunset High School

~~2011~~ Proposed Additions to No Transportation Zone (NTZ)



Meadow Park Middle School

2012 Proposed Addition to No Transportation Zone (NTZ)

