

*Denton
Independent
School
District*



Quarterly
Report
1Q18

*Learn from Yesterday...
Understand Today...
Plan for Tomorrow*



TEMPLETON
DEMOGRAPHICS

Economic Conditions – DFW Area (March 2017)

3.6%

131,639 new jobs
National rate 1.2%



Job Growth

Unemployment Rate



U.S. 4.1%
Texas 4.1%
DFW MSA 3.7%
Denton 3.2%

-0.1%

33,516

3,298 more starts than 1Q17

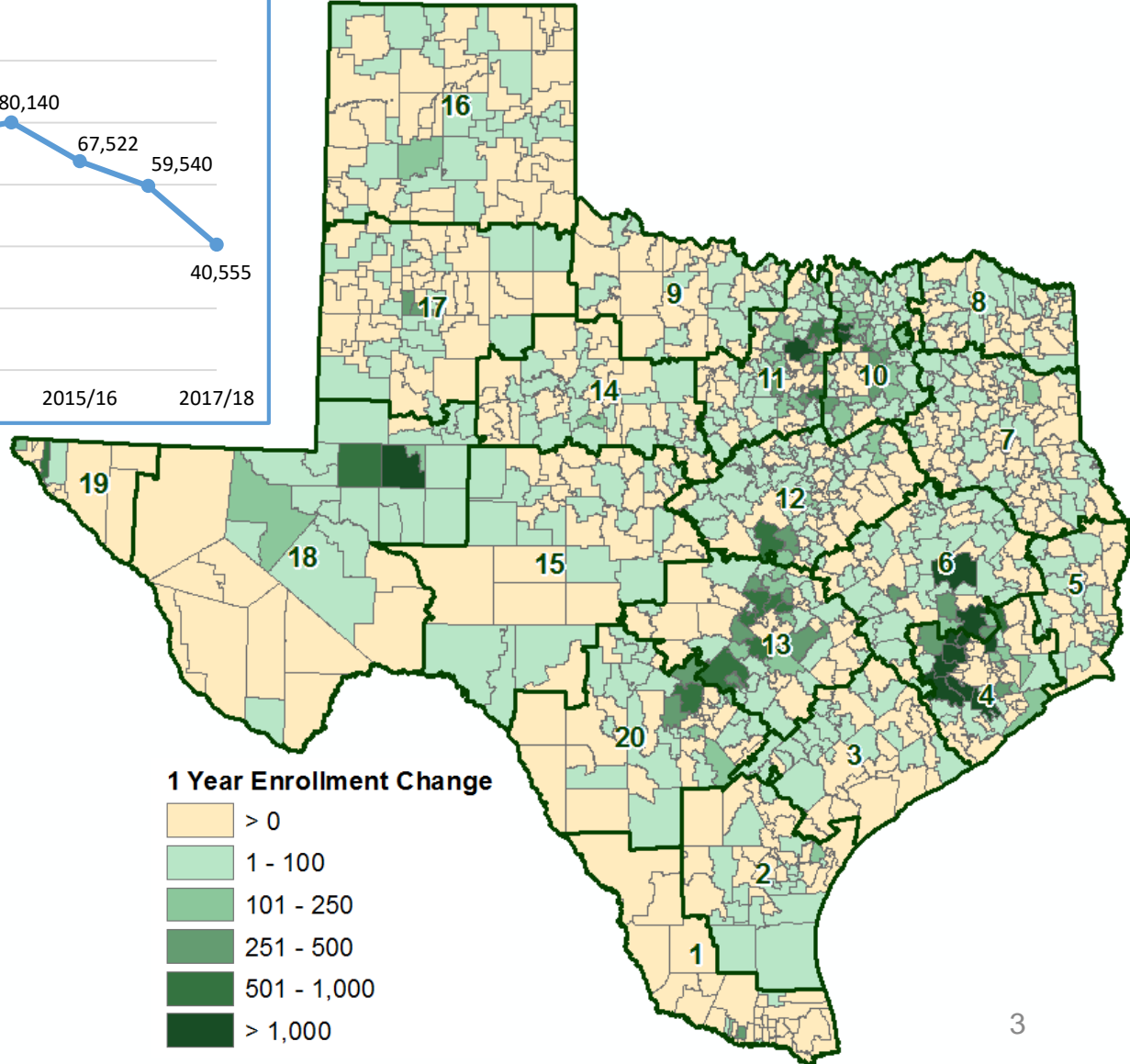
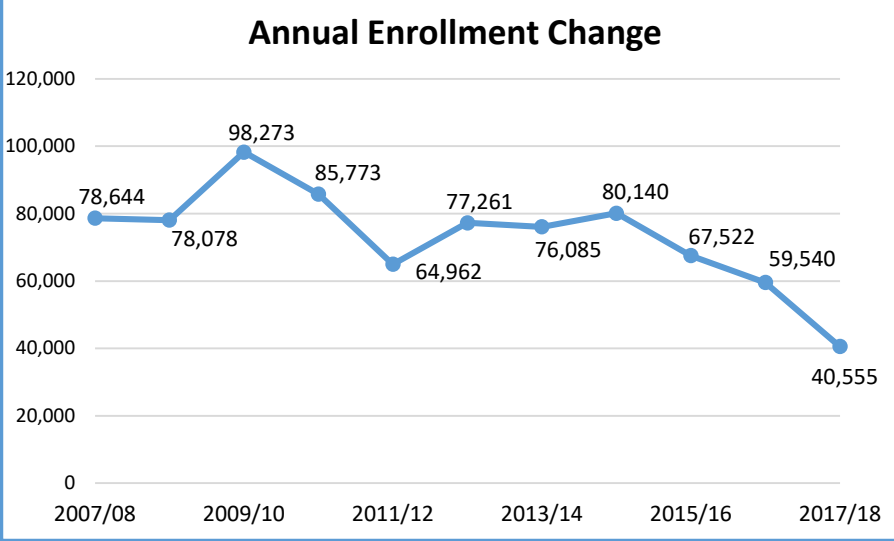


Annual Home Starts



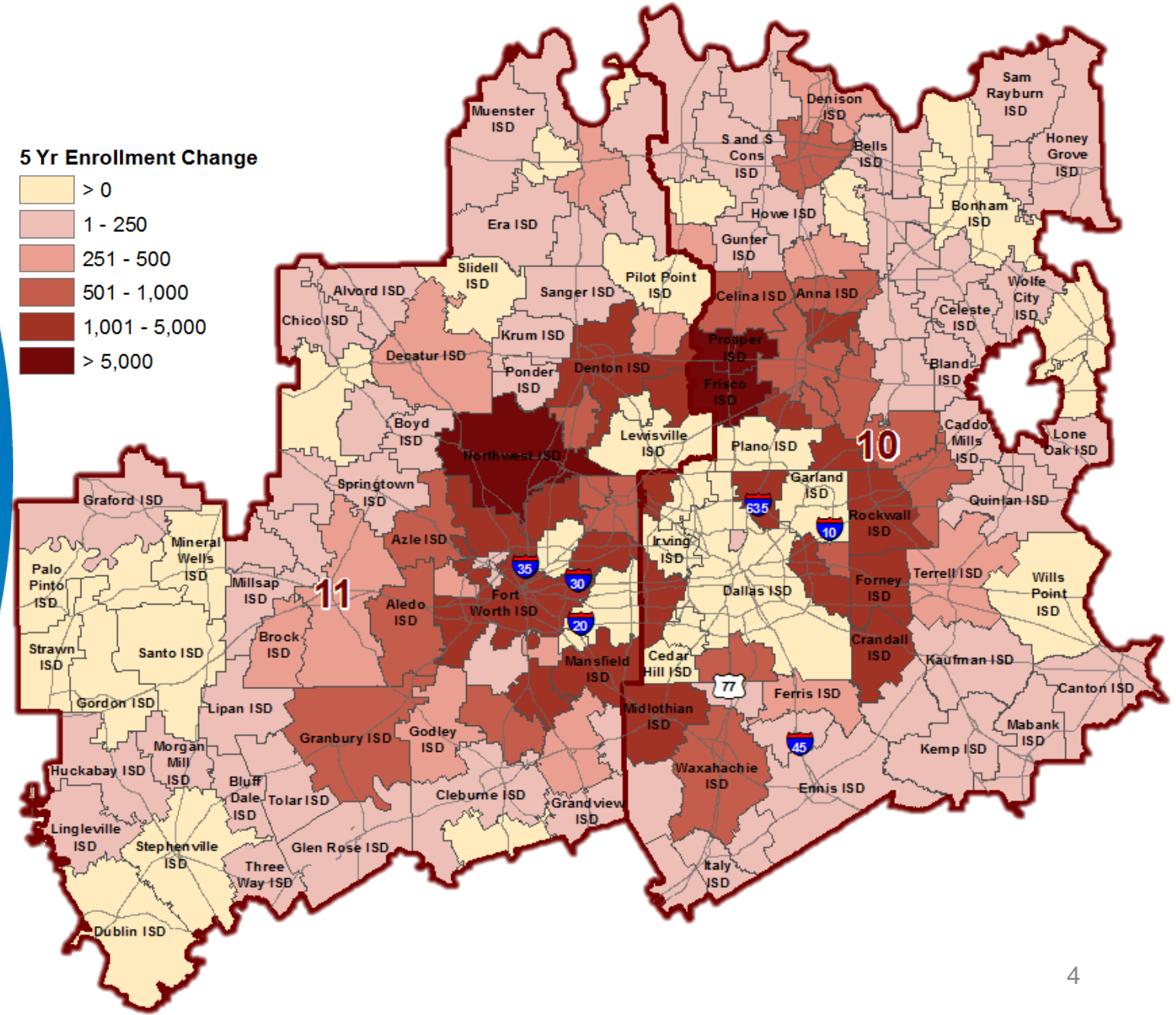
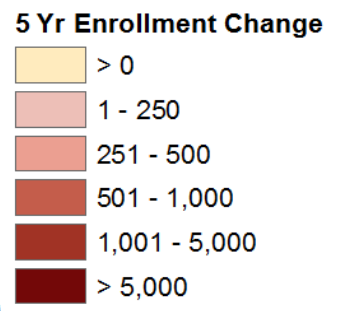
Texas Enrollment Trends

2017/18 State Enrollment
 Total Enrollment 5,399,682
 Total Growth 40,555





Region 10 & 11 Enrollment Trends





Region 10 & 11 Enrollment Trends

Region 10

Rank	District	2012/13 Enrollment	2017/18 Enrollment	5-YEAR Change (12/13-17/18)	5-YEAR PCT Growth
1	Frisco ISD	42,703	58,450	15,747	36.9%
2	Prosper ISD	5,502	12,133	6,631	120.5%
3	Grand Prairie ISD	26,928	29,362	2,434	9.0%
4	Wylie ISD (Collin)	13,425	15,769	2,344	17.5%
5	Mesquite ISD	39,128	41,022	1,894	4.8%
6	Rockwall ISD	14,483	16,295	1,812	12.5%
7	Coppell ISD	10,997	12,625	1,628	14.8%
8	Forney ISD	8,571	10,196	1,625	19.0%
9	Midlothian ISD	7,560	8,872	1,312	17.4%
10	Allen ISD	19,891	21,159	1,268	6.4%
11	Richardson ISD	38,046	39,314	1,268	3.3%
12	Melissa ISD	1,695	2,792	1,097	64.7%
13	Crandall ISD	3,030	4,056	1,026	33.9%
14	Princeton ISD	3,435	4,381	946	27.5%
15	Anna ISD	2,526	3,459	933	36.9%
16	Waxahachie ISD	7,652	8,517	865	11.3%
17	Royse City ISD	4,905	5,739	834	17.0%
18	Lancaster ISD	6,538	7,371	833	12.7%
19	De Soto ISD	8,900	9,657	757	8.5%
20	Community ISD	1,635	2,262	627	38.3%

Region 11

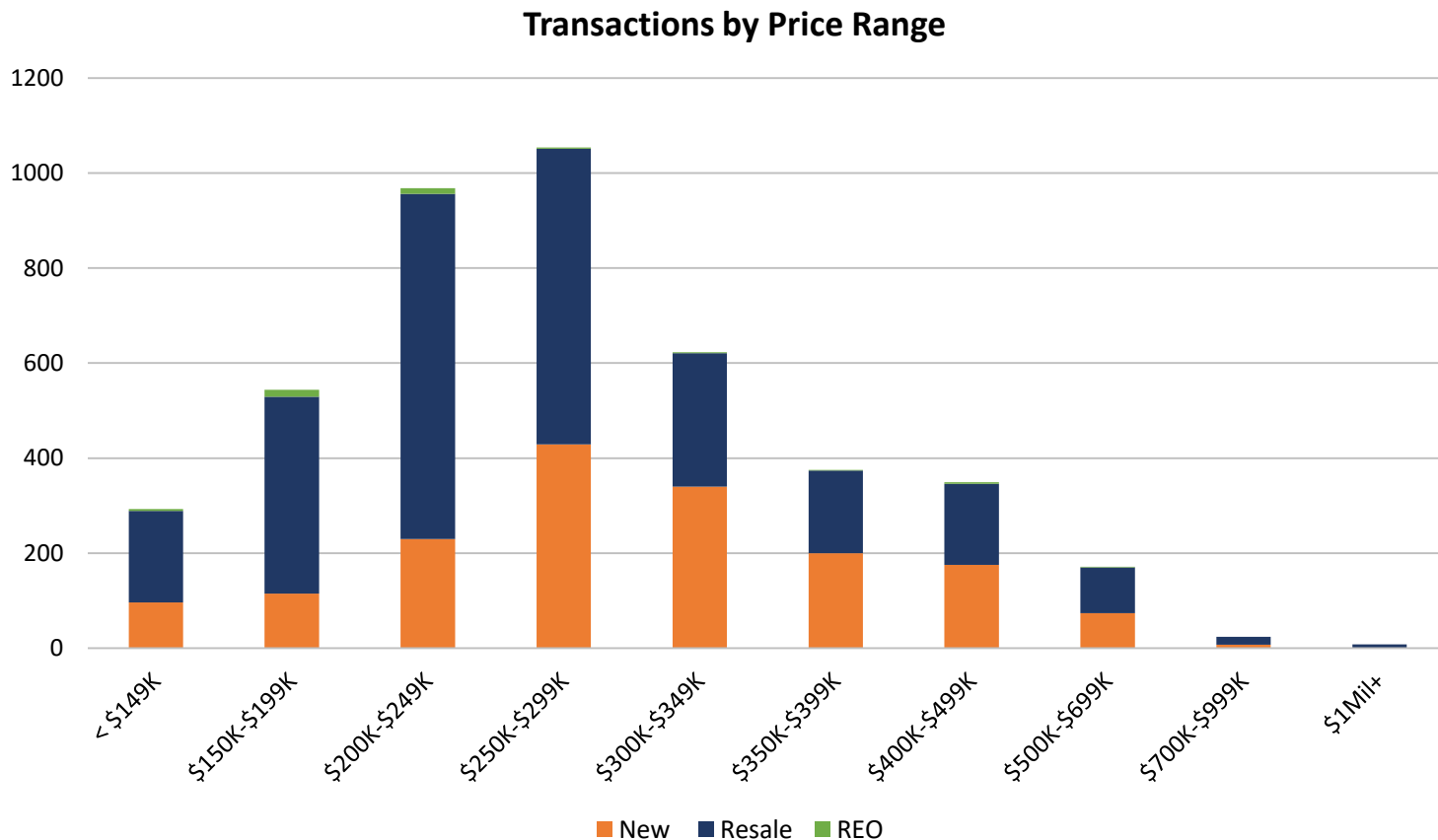
Rank	DISTRICT	2012/13 Enrollment	2017/18 Enrollment	5-YEAR CHANGE (12/13-17/18)	5-YEAR PCT Growth
1	Northwest ISD	17,813	23,141	5,328	29.9%
2	Denton ISD	25,782	29,420	3,638	14.1%
3	Fort Worth ISD	83,491	86,234	2,743	3.3%
4	Mansfield ISD	32,883	35,054	2,171	6.6%
5	Burleson ISD	10,581	12,221	1,640	15.5%
6	Hurst-Euless-Bedford ISD	21,819	23,429	1,610	7.4%
7	Eagle Mt-Saginaw ISD	17,731	19,317	1,586	8.9%
8	Keller ISD	33,365	34,937	1,572	4.7%
9	Little Elm ISD	6,399	7,526	1,127	17.6%
10	Aledo ISD	4,729	5,718	989	20.9%
11	Argyle ISD	1,907	2,716	809	42.4%
12	Carroll ISD	7,711	8,360	649	8.4%
13	Joshua ISD	4,906	5,528	622	12.7%
14	Granbury ISD	6,536	7,143	607	9.3%
15	Grapevine-Colleyville ISD	13,386	13,975	589	4.4%
16	Azle ISD	5,930	6,496	566	9.5%
17	Aubrey ISD	2,006	2,495	489	24.4%
18	Weatherford ISD	7,635	8,116	481	6.3%
19	Everman ISD	5,401	5,838	437	8.1%
20	Brock ISD	1,002	1,373	371	37.0%





Denton ISD Housing Activity

May 2017 – April 2018 Home Sales by Price Point



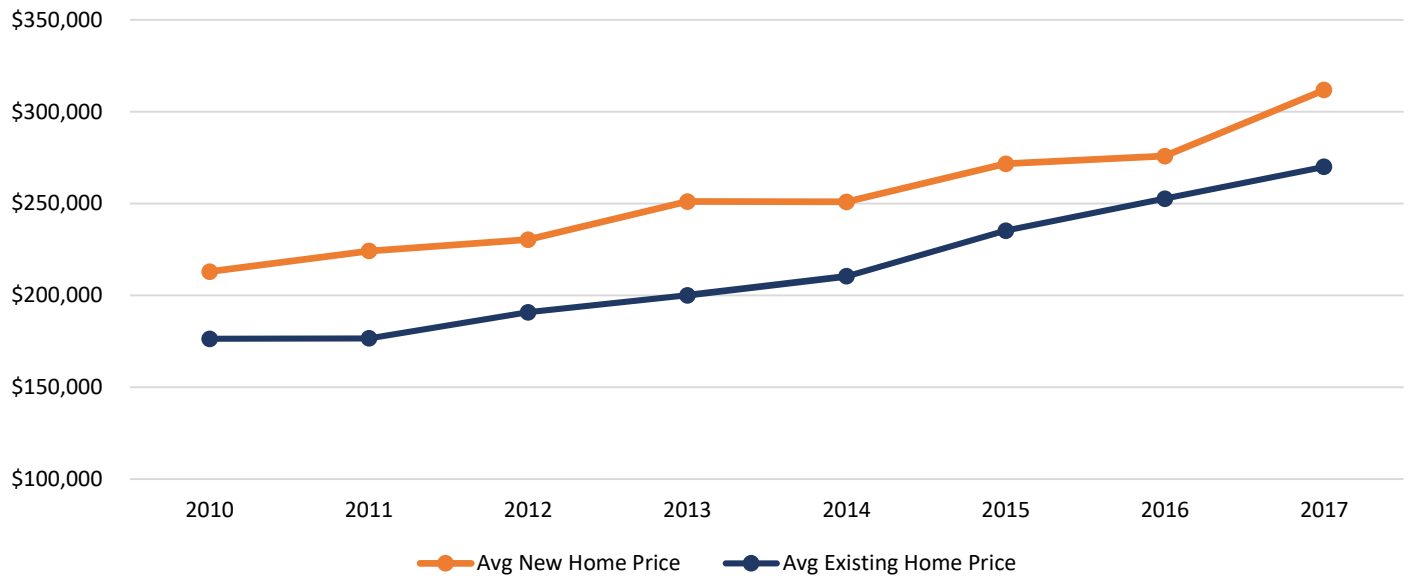
- In the last 12 months, the highest number of new home sales within Denton ISD have been in the \$250K-\$299K price range
- The average new home sale price in Denton ISD in the last 12 months was \$306,113
- The average existing home sale price in Denton ISD in the last 12 months was \$271,837





Denton ISD Historical Home Price Analysis

New vs Existing Home Sale Price, 2010 - 2017



	Avg New Home Price	Avg Existing Home Price
2010	\$212,938	\$176,385
2011	\$224,196	\$176,638
2012	\$230,351	\$190,866
2013	\$251,100	\$200,099
2014	\$250,953	\$210,422
2015	\$271,691	\$235,239
2016	\$275,862	\$252,702
YTD 2017	\$311,832	\$270,010

The average new home sale price in Denton ISD has risen 46.4% or \$98,894 since 2010

The average existing home sale price within the district has risen 53%, or \$93,625 since 2010





DFW New Home Ranking Report

ISD Ranked by Annual Closings – 1Q18

Rank	District Name	Annual Starts	Annual Closings	VDL	Future
1	Prosper ISD	2,864	2,716	6,166	24,116
2	Frisco ISD	2,455	2,620	4,894	4,938
3	Denton ISD	2,160	2,015	3,208	32,461*
4	Northwest ISD	1,878	1,924	1,776	25,307
5	Dallas ISD	1,895	1,744	1,850	7,374
6	Little Elm ISD	1,568	1,413	1,790	2,581
7	Eagle Mt.-Saginaw ISD	1,390	1,064	1,539	19,079
8	Lewisville ISD	1,107	1,039	2,329	3,982
9	Forney ISD	1,234	948	1,678	14,207
10	Rockwall ISD	903	914	1,820	8,406
11	Wylie ISD	922	809	1,006	4,150
12	Keller ISD	580	737	759	1,686
13	McKinney ISD	636	718	1,609	6,425
14	Allen ISD	703	703	1,371	1,219
15	Mansfield ISD	676	658	1,086	6,689
16	Midlothian ISD	717	635	1,280	19,666
17	Fort Worth ISD	582	612	833	4,966
18	Crowley ISD	825	595	911	12,430
19	Garland ISD	348	538	319	4,080
20	Waxahachie ISD	553	514	845	9,823

*Based on additional Templeton Demographics housing research

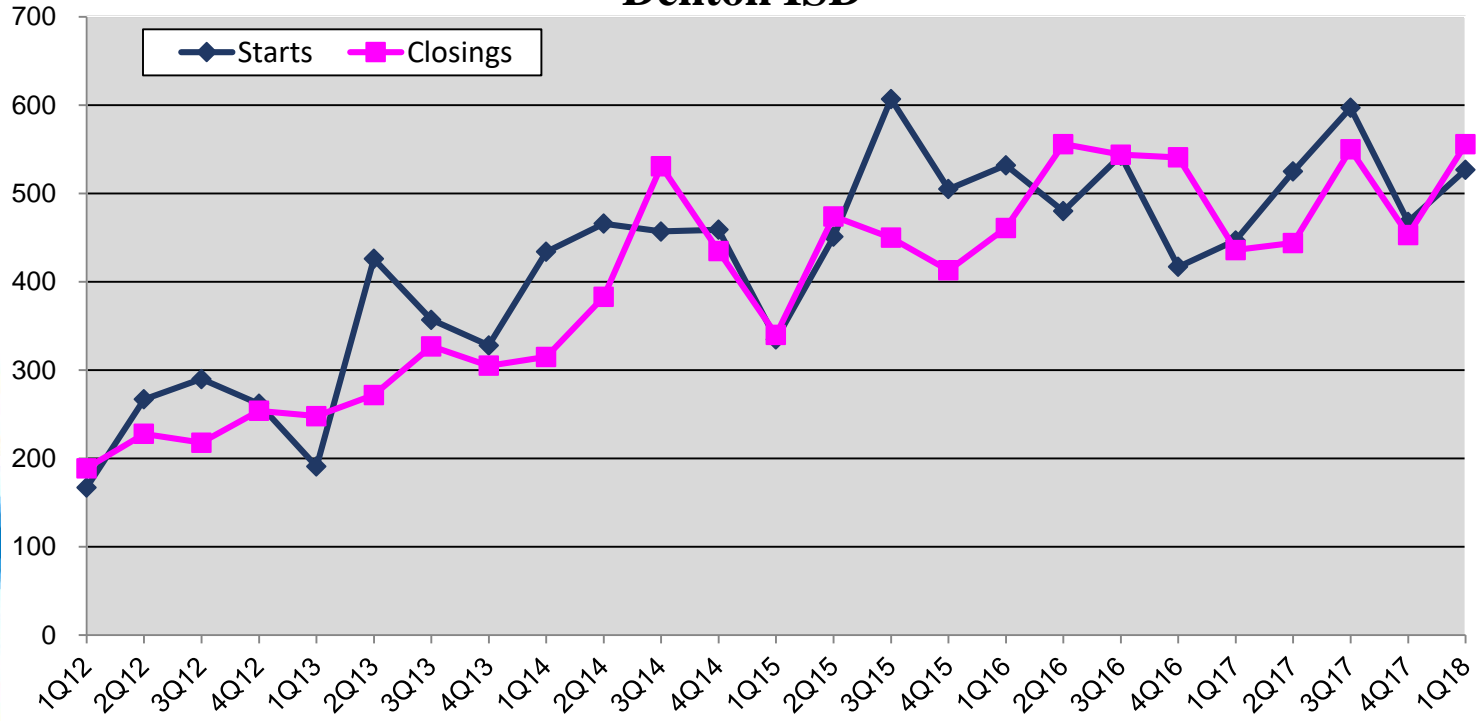
Table **DOES include age restricted communities





New Housing Activity

Denton ISD



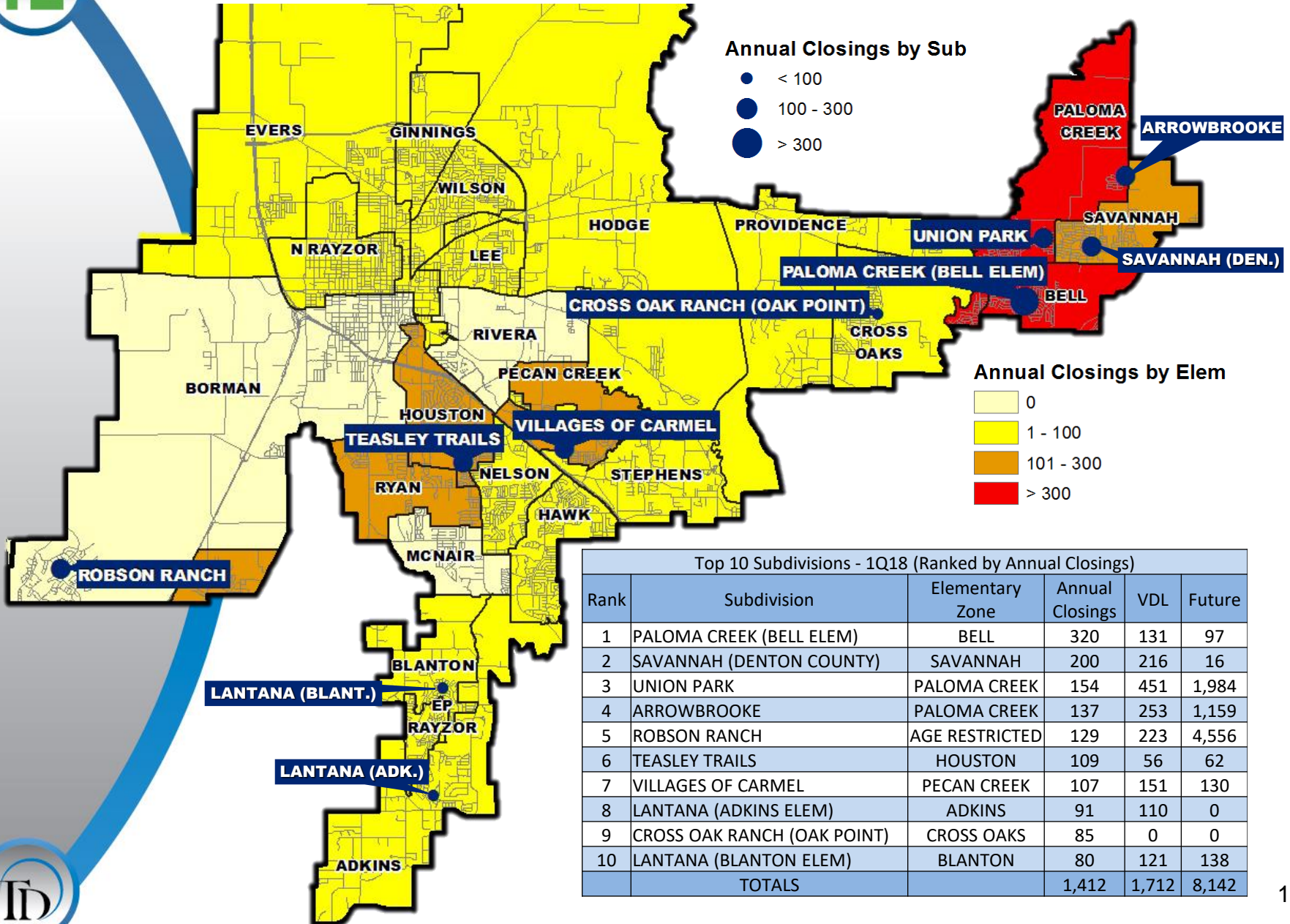
Starts	2012	2013	2014	2015	2016	2017	2018
1Q	167	191	434	335	532	447	527
2Q	267	426	466	451	480	525	
3Q	290	357	457	607	543	597	
4Q	262	328	459	505	417	468	
Total	986	1,302	1,816	1,898	1,972	2,037	527

Closings	2012	2013	2014	2015	2016	2017	2018
1Q	189	248	315	340	461	436	556
2Q	228	272	383	474	556	444	
3Q	218	327	531	450	544	550	
4Q	254	305	435	413	541	453	
Total	889	1,152	1,664	1,677	2,102	1,883	556

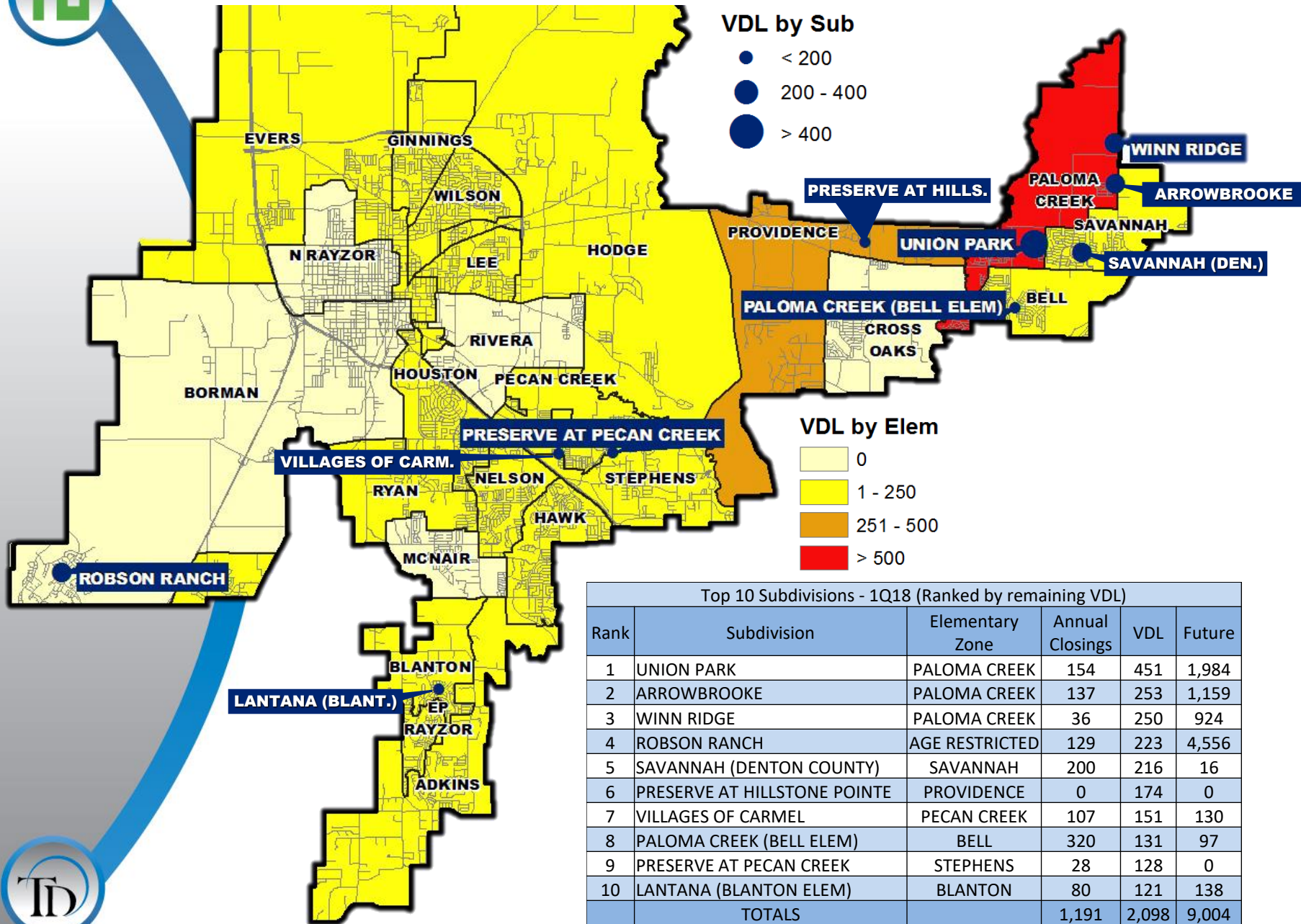
- Denton ISD posted the 2nd highest 1st quarter starts total in more than 9 years
- The district saw a record number of 1st quarter home closings as builders worked through available inventory
- New home inventory is healthy at 6 months of supply



Annual Closing Distribution

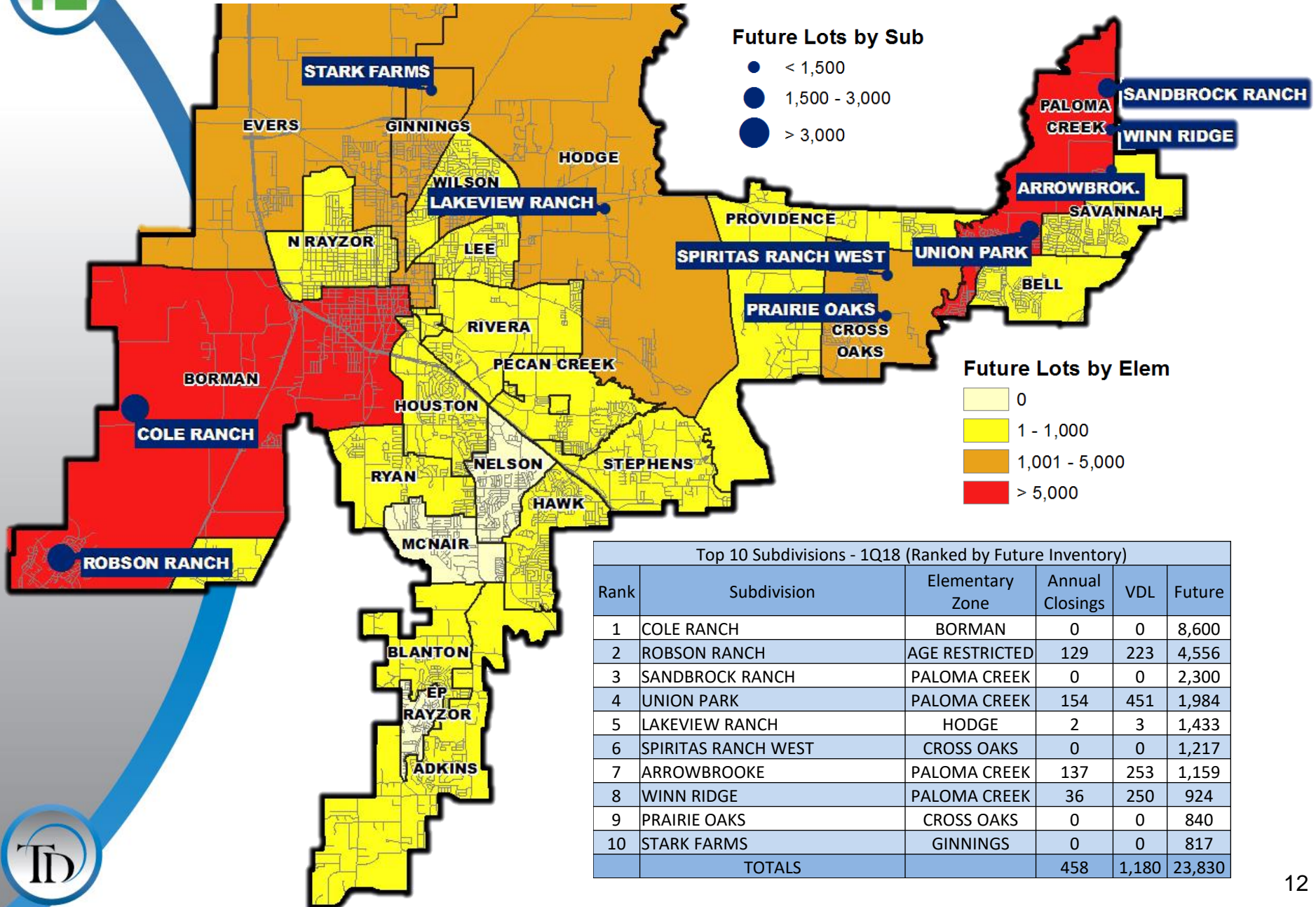


VDL Distribution





Future Lots



Future Lots by Sub

- < 1,500
- 1,500 - 3,000
- > 3,000

Future Lots by Elem

- 0
- 1 - 1,000
- 1,001 - 5,000
- > 5,000

Top 10 Subdivisions - 1Q18 (Ranked by Future Inventory)

Rank	Subdivision	Elementary Zone	Annual Closings	VDL	Future
1	COLE RANCH	BORMAN	0	0	8,600
2	ROBSON RANCH	AGE RESTRICTED	129	223	4,556
3	SANDBROCK RANCH	PALOMA CREEK	0	0	2,300
4	UNION PARK	PALOMA CREEK	154	451	1,984
5	LAKEVIEW RANCH	HODGE	2	3	1,433
6	SPIRITAS RANCH WEST	CROSS OAKS	0	0	1,217
7	ARROWBROOKE	PALOMA CREEK	137	253	1,159
8	WINN RIDGE	PALOMA CREEK	36	250	924
9	PRAIRIE OAKS	CROSS OAKS	0	0	840
10	STARK FARMS	GINNINGS	0	0	817
TOTALS			458	1,180	23,830





New Home Activity by Elementary Zone

Elementary	Annual Starts	Quarter Starts	Annual Closings	Quarter Closings	Under Construction	Inventory	Vacant Dev. Lots	Future
ADKINS	105	33	93	27	45	67	115	317
BELL	301	43	355	63	61	91	144	859
BLANTON	92	18	85	18	19	35	129	138
BORMAN	0	0	0	0	0	0	0	8,946
CROSS OAKS	36	0	85	2	1	5	0	2,357
EP RAYZOR	8	3	5	2	5	7	9	0
EVERS	31	6	38	13	13	16	103	1,655
GINNINGS	79	47	27	20	47	52	112	1,233
HAWK	45	12	29	17	15	24	67	109
HODGE	9	9	2	0	9	9	40	2,013
HOUSTON	107	57	109	24	68	75	56	62
LEE	23	16	3	3	20	20	47	408
MCNAIR	0	0	0	0	0	0	0	0
N RAYZOR	1	1	1	1	1	1	0	6
NELSON	6	2	5	2	2	3	2	0
NORTH RAYZOR	0	0	0	0	0	0	0	320
PALOMA CREEK	396	112	364	108	162	213	955	6,597
PECAN CREEK	98	20	107	19	37	44	151	130
PROVIDENCE	50	38	11	3	45	48	350	700
RIVERA	0	0	0	0	0	0	0	243
RYAN	307	25	278	127	47	90	209	846
SAVANNAH	215	21	228	61	57	109	245	428
STEPHENS	70	15	55	12	33	42	153	83
WILSON	42	40	6	3	40	42	98	348
GRAND TOTAL	2,021	518	1,886	525	727	993	2,985	27,798

*Table does **NOT** include age restricted communities



Highest activity in the category



Second highest activity in the category



Third highest activity in the category

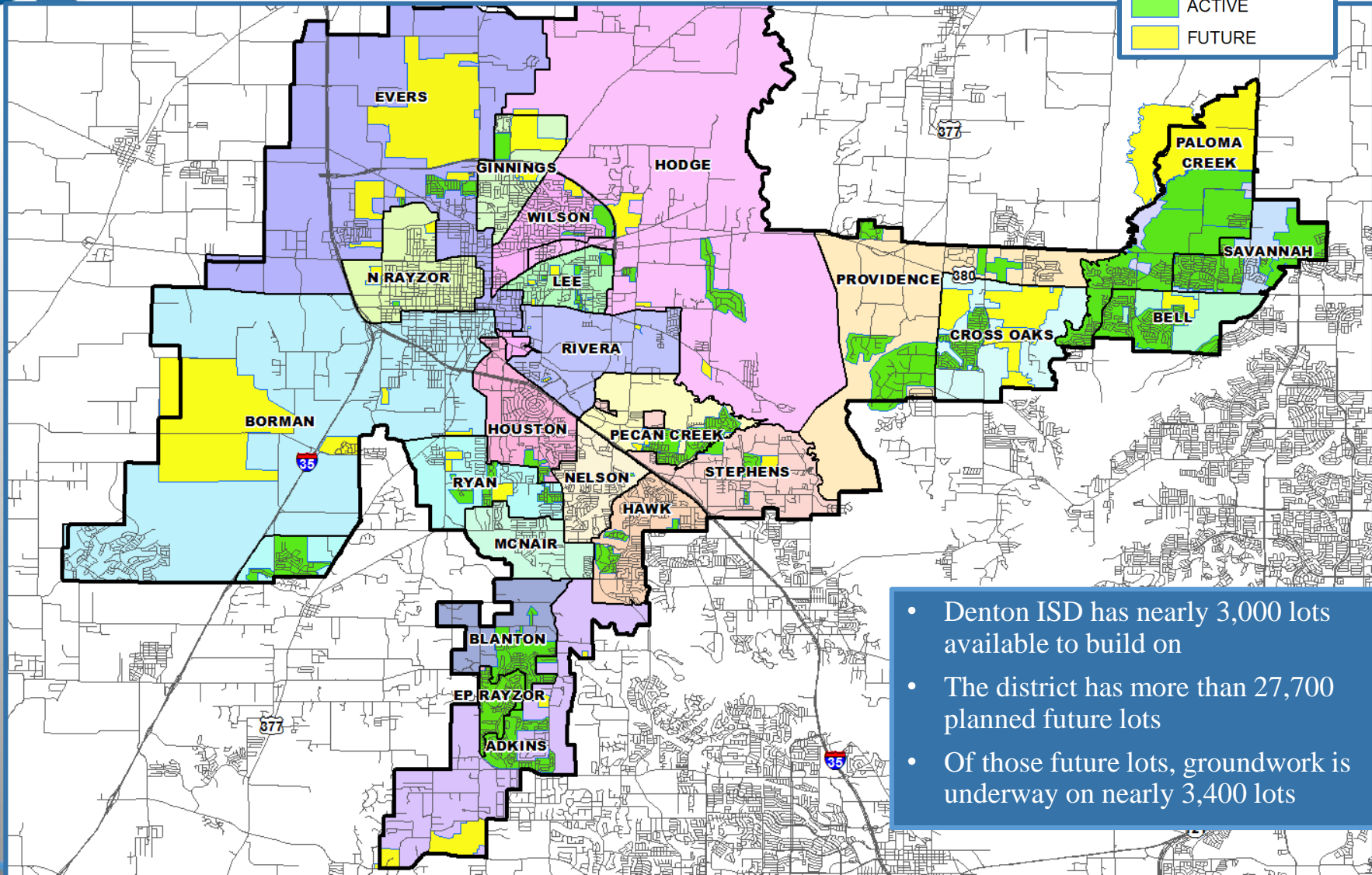




District Housing Overview

Development Status

- ACTIVE
- FUTURE



- Denton ISD has nearly 3,000 lots available to build on
- The district has more than 27,700 planned future lots
- Of those future lots, groundwork is underway on nearly 3,400 lots

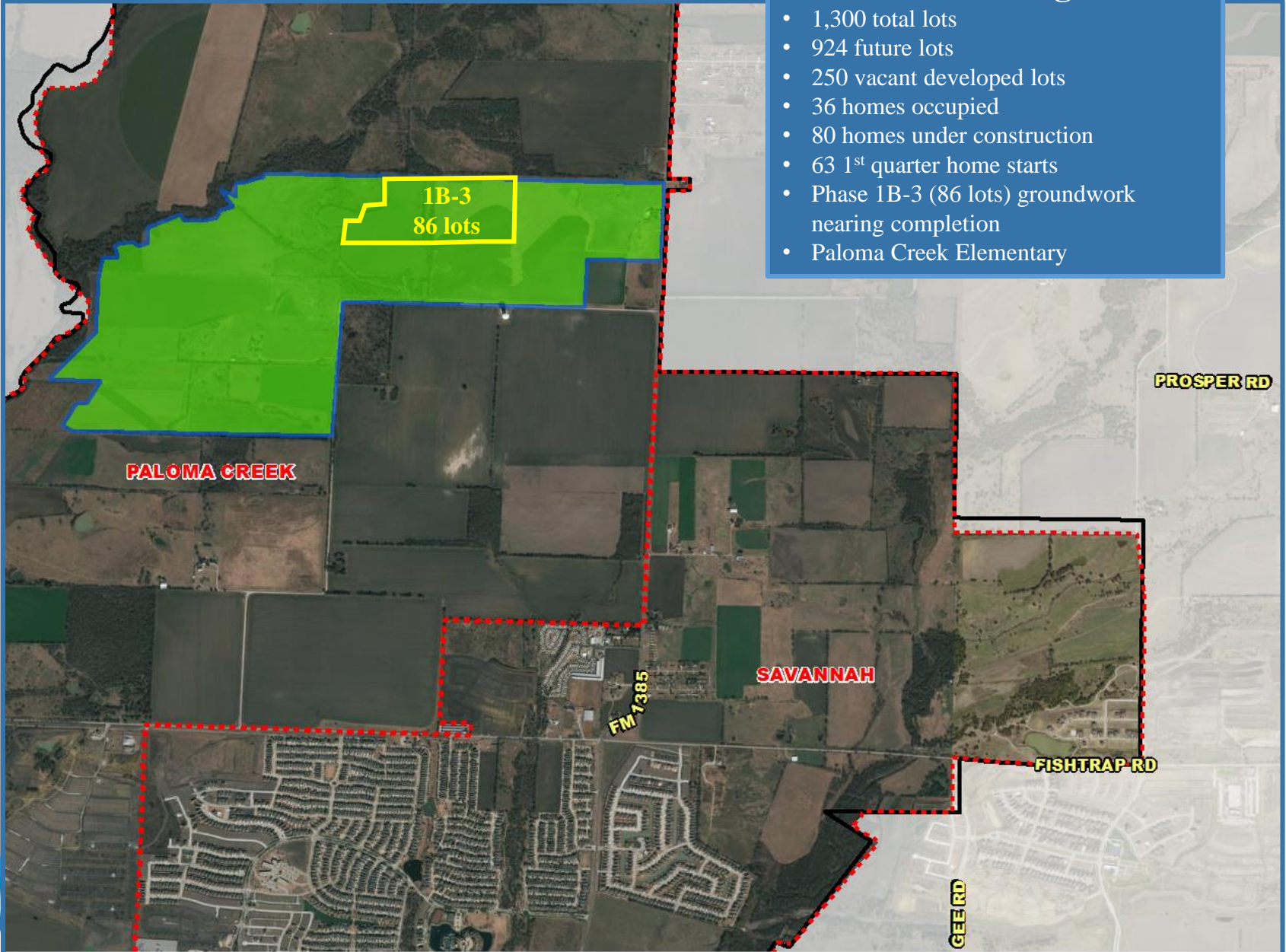


Residential Activity

Winn Ridge

Winn Ridge

- 1,300 total lots
- 924 future lots
- 250 vacant developed lots
- 36 homes occupied
- 80 homes under construction
- 63 1st quarter home starts
- Phase 1B-3 (86 lots) groundwork nearing completion
- Paloma Creek Elementary



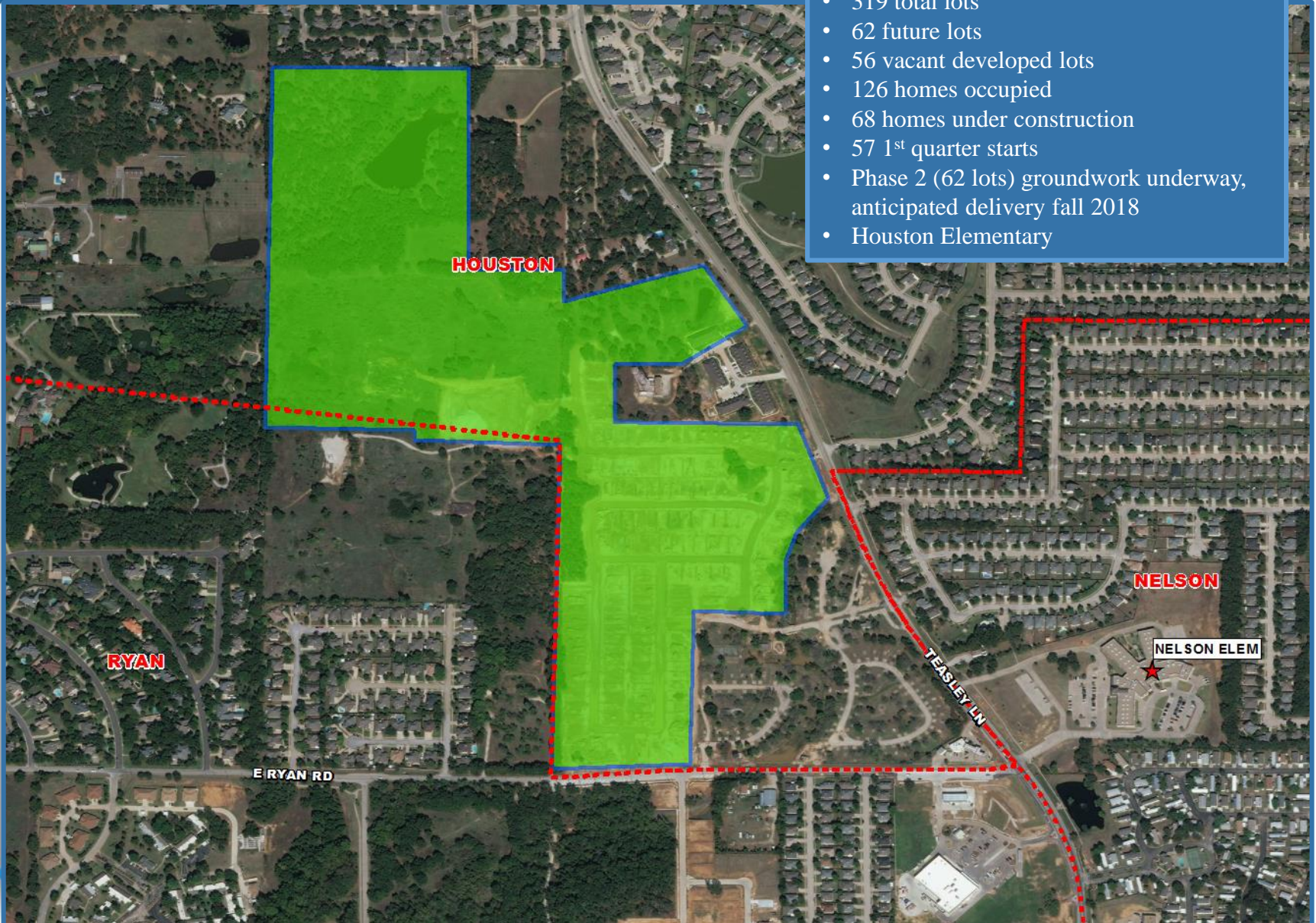


Residential Activity

Teasley Trails

Teasley Trails

- 319 total lots
- 62 future lots
- 56 vacant developed lots
- 126 homes occupied
- 68 homes under construction
- 57 1st quarter starts
- Phase 2 (62 lots) groundwork underway, anticipated delivery fall 2018
- Houston Elementary





Residential Activity

Hillstone Pointe, Preserve at Hillstone Pointe & The Landing at Little Elm

Preserve at Hillstone Pointe

- 174 total lots
- All lots delivered 1Q18
- First homes under construction
- Providence Elementary

Ph. 1
134 lots

Hillstone Pointe

- 441 total lots
- 309 future lots
- 134 vacant developed lots
- 31 1st quarter starts
- Providence Elementary

The Landing at Little Elm

- 384 total units
- Currently under construction
- First units available late 2018/early 2019
- Providence Elementary

PROVIDENCE

PROVIDENCE ELEM



Future Residential Activity

Creekside



Creekside

- 137 total future lots
- Final plat approved March 2018
- Groundwork has not started
- Ryan Elementary



Ten Year Forecast

By Grade Level

Year (Oct.)	EE/ PRE-K	K	1st	2nd	3rd	4th	5th	6th	7th	8th	9th	10th	11th	12th	Total	Total Growth	Percent Growth
2013/14	967	2,074	2,164	2,163	2,069	2,104	2,085	2,041	1,919	1,904	1,925	1,708	1,640	1,549	26,312		
2014/15	1,063	2,068	2,099	2,178	2,166	2,082	2,133	2,075	2,052	1,973	2,042	1,873	1,665	1,551	27,020	708	2.7%
2015/16	1,143	1,954	2,143	2,088	2,190	2,152	2,115	2,154	2,128	2,094	2,091	1,985	1,756	1,566	27,559	539	2.0%
2016/17	1,128	2,066	2,044	2,194	2,181	2,231	2,219	2,159	2,202	2,175	2,293	2,084	1,967	1,685	28,628	1,069	3.9%
2017/18	1,152	2,082	2,100	2,121	2,231	2,251	2,302	2,263	2,232	2,207	2,355	2,259	2,016	1,880	29,451	823	2.9%
2018/19	1,152	2,104	2,136	2,143	2,163	2,272	2,300	2,344	2,308	2,282	2,368	2,290	2,214	1,937	30,013	562	1.9%
2019/20	1,152	2,146	2,180	2,203	2,207	2,184	2,344	2,341	2,379	2,359	2,441	2,311	2,262	2,126	30,635	622	2.1%
2020/21	1,152	2,314	2,219	2,251	2,262	2,235	2,255	2,379	2,377	2,424	2,533	2,370	2,281	2,168	31,220	585	1.9%
2021/22	1,152	2,390	2,392	2,295	2,306	2,301	2,293	2,296	2,420	2,414	2,610	2,490	2,339	2,185	31,883	663	2.1%
2022/23	1,152	2,452	2,466	2,477	2,337	2,329	2,350	2,330	2,341	2,467	2,572	2,541	2,456	2,244	32,514	631	2.0%
2023/24	1,152	2,551	2,513	2,541	2,522	2,373	2,381	2,390	2,370	2,374	2,625	2,514	2,476	2,345	33,127	613	1.9%
2024/25	1,152	2,590	2,613	2,575	2,577	2,551	2,425	2,422	2,429	2,414	2,533	2,559	2,464	2,373	33,677	550	1.7%
2025/26	1,152	2,666	2,643	2,673	2,622	2,610	2,607	2,470	2,481	2,481	2,569	2,471	2,478	2,363	34,286	609	1.8%
2026/27	1,152	2,679	2,737	2,709	2,726	2,656	2,668	2,652	2,512	2,532	2,640	2,505	2,409	2,373	34,950	664	1.9%
2027/28	1,152	2,746	2,757	2,800	2,745	2,761	2,712	2,707	2,697	2,562	2,694	2,557	2,425	2,308	35,623	673	1.9%

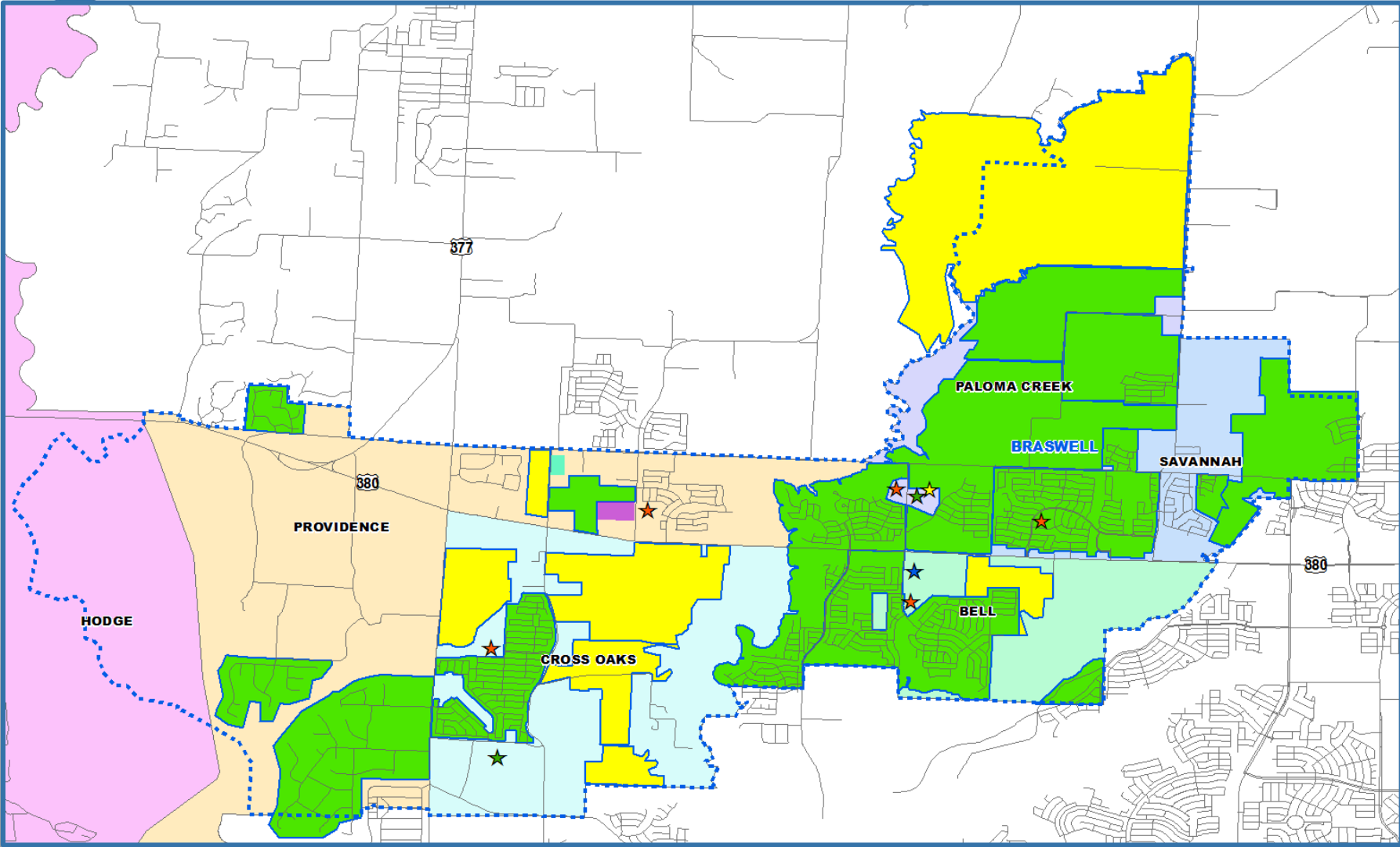
*Yellow box = largest grade per year

*Green box = second largest grade per year

- Denton ISD will enroll more than 31,000 students by 2020
- 5 year growth = 3,063 students
- 2022/23 enrollment = 32,514 students
- 10 year growth = 6,172 students
- 2027/28 enrollment = 35,623 students



Braswell High School Zone



Vertical Zones- Ten Year Forecast

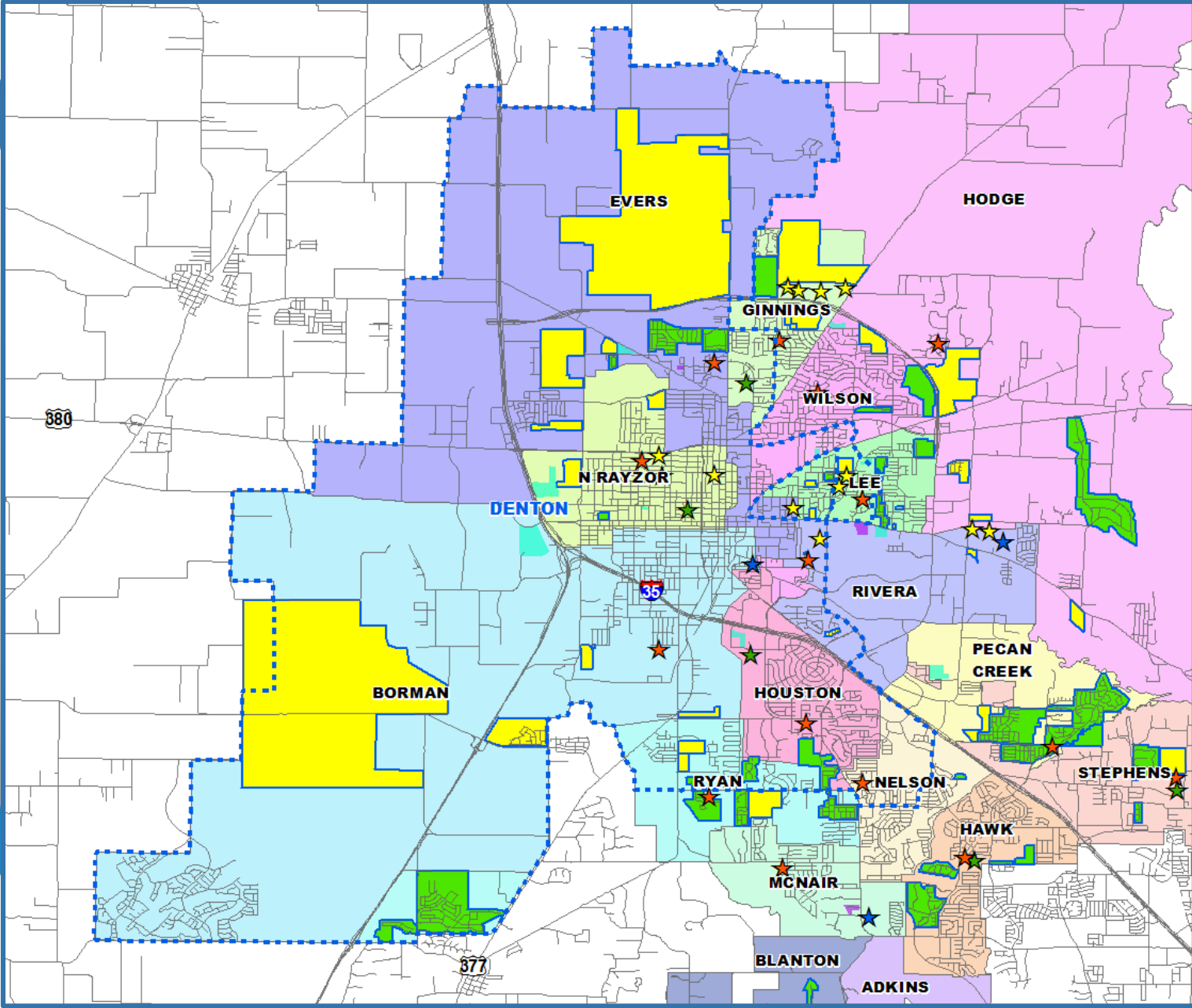
Braswell High School

Campus Name	Capacity	HISTORY		ENROLLMENT PROJECTIONS									
		2016/17	Oct. 2017 2017/18	2018/19	2019/20	2020/21	2021/22	2022/23	2023/24	2024/25	2025/26	2026/27	2027/28
Bell Elementary School	740	662	801	860	887	885	894	897	910	920	939	943	952
Cross Oaks Elementary School	740	734	724	711	727	765	819	889	927	979	1,045	1,110	1,155
Paloma Creek Elementary School	740	502	658	752	845	960	1,077	1,176	1,272	1,366	1,454	1,552	1,683
Providence Elementary School	740	406	417	431	480	506	534	544	571	580	592	602	613
Savannah Elementary School	740	700	721	748	790	815	847	890	914	938	950	955	954
ELEMENTARY TOTALS	3,700	3,004	3,321	3,502	3,729	3,931	4,171	4,396	4,594	4,783	4,980	5,162	5,357
Elementary Absolute Change		353	317	181	227	202	240	225	198	189	197	182	195
Elementary Percent Change		13.32%	10.55%	5.45%	6.48%	5.42%	6.11%	5.39%	4.50%	4.11%	4.12%	3.65%	3.78%
Navo Middle School	1,181	1,372	938	1,057	1,167	1,310	1,321	1,331	1,310	1,325	1,346	1,356	1,291
Rodriguez Middle School	1,323	0	662	728	729	745	775	850	928	1,004	1,087	1,202	1,347
MIDDLE SCHOOL TOTALS	2,504	1,372	1,600	1,785	1,896	2,055	2,096	2,181	2,238	2,329	2,433	2,558	2,638
Middle School Absolute Change		161	228	185	111	159	41	85	57	91	104	125	80
Middle School Percent Change		13.29%	16.62%	11.56%	6.22%	8.39%	2.00%	4.06%	2.61%	4.07%	4.47%	5.14%	3.13%
Braswell High School		1,220	1,760	2,055	2,391	2,551	2,823	3,017	3,130	3,237	3,272	3,371	3,442
HIGH SCHOOL TOTALS		1,220	1,760	2,055	2,391	2,551	2,823	3,017	3,130	3,237	3,272	3,371	3,442
High School Absolute Change		1,220	540	295	336	160	272	194	113	107	35	99	71
High School Percent Change			44.26%	16.76%	16.35%	6.69%	10.66%	6.87%	3.75%	3.42%	1.08%	3.03%	2.11%
Braswell High Zone Totals	6,204	5,596	6,681	7,342	8,016	8,537	9,090	9,594	9,962	10,349	10,685	11,091	11,437
Zone Absolute Change		1,734	1,085	661	674	521	553	504	368	387	336	406	346
Zone Percent Change		44.9%	19.4%	9.9%	9.2%	6.5%	6.5%	5.5%	3.8%	3.9%	3.2%	3.8%	3.1%

*Yellow box = over stated capacity



Denton High School Zone



Vertical Zones- Ten Year Forecast

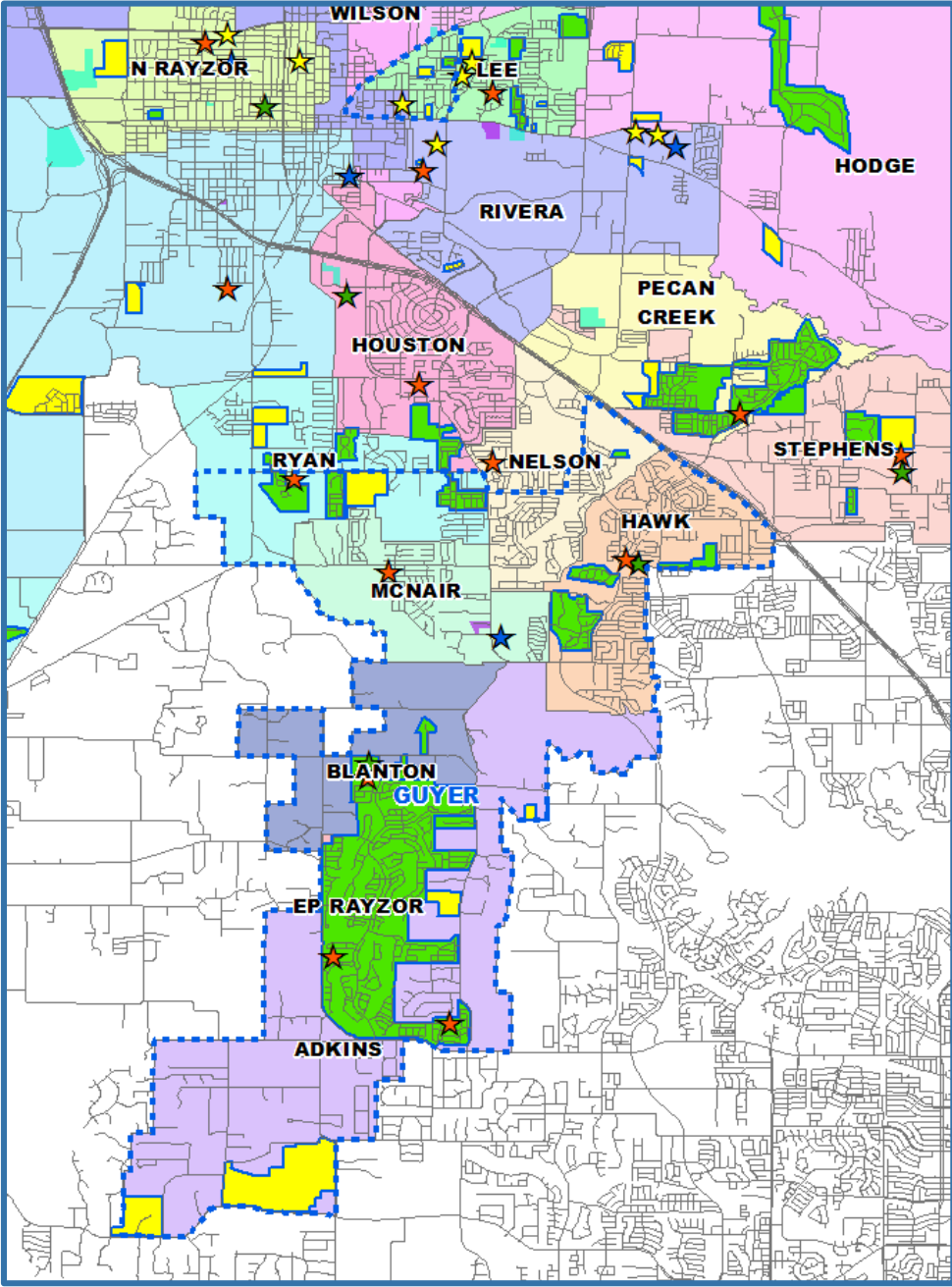
Denton High School

Campus Name	Capacity	HISTORY	Oct. 2017	ENROLLMENT PROJECTIONS									
		2016/17	2017/18	2018/19	2019/20	2020/21	2021/22	2022/23	2023/24	2024/25	2025/26	2026/27	2027/28
Borman Elementary School	740	470	470	462	471	492	536	590	659	706	751	790	820
Evers Park Elementary School	740	578	574	585	605	598	618	636	676	722	777	823	871
Sam Houston Elementary School	740	592	584	599	607	624	616	630	643	654	656	655	651
Lee Elementary School	740	597	641	646	649	651	668	667	666	676	691	692	692
Newton Rayzor Elementary School	740	651	624	604	581	580	573	584	597	606	619	625	628
Ryan Elementary School	740	642	673	705	725	759	800	825	858	896	928	945	948
ELEMENTARY TOTALS	4,440	3,530	3,566	3,601	3,638	3,704	3,811	3,932	4,099	4,260	4,422	4,530	4,610
Elementary Absolute Change		67	36	35	37	66	107	121	167	161	162	108	80
Elementary Percent Change		1.93%	1.02%	0.98%	1.03%	1.81%	2.89%	3.18%	4.25%	3.93%	3.80%	2.44%	1.77%
Calhoun Middle School	1,268	711	729	733	726	719	724	746	751	755	761	788	817
McMath Middle School	1,181	754	781	810	846	880	898	900	923	936	977	1,044	1,108
MIDDLE SCHOOL TOTALS	2,449	1,465	1,510	1,543	1,572	1,599	1,622	1,646	1,674	1,691	1,738	1,832	1,925
Middle School Absolute Change		45	45	33	29	27	23	24	28	17	47	94	93
Middle School Percent Change		3.17%	3.07%	2.19%	1.88%	1.72%	1.44%	1.48%	1.70%	1.02%	2.78%	5.41%	5.08%
Denton High School	2,460	2,052	2,036	2,038	2,043	2,081	2,092	2,144	2,169	2,200	2,229	2,251	2,304
HIGH SCHOOL TOTALS	2,460	2,052	2,036	2,038	2,043	2,081	2,092	2,144	2,169	2,200	2,229	2,251	2,304
High School Absolute Change		-272	-16	2	5	38	11	52	25	31	29	22	53
High School Percent Change		-11.70%	-0.78%	0.10%	0.25%	1.86%	0.53%	2.49%	1.17%	1.43%	1.32%	0.99%	2.35%
Denton High Zone Totals	9,349	7,047	7,112	7,182	7,253	7,384	7,525	7,722	7,942	8,151	8,389	8,613	8,839
Zone Absolute Change		-160	65	70	71	131	141	197	220	209	238	224	226
Zone Percent Change		-2.2%	0.9%	1.0%	1.0%	1.8%	1.9%	2.6%	2.8%	2.6%	2.9%	2.7%	2.6%

*Yellow box = over stated capacity



Guyer High School Zone



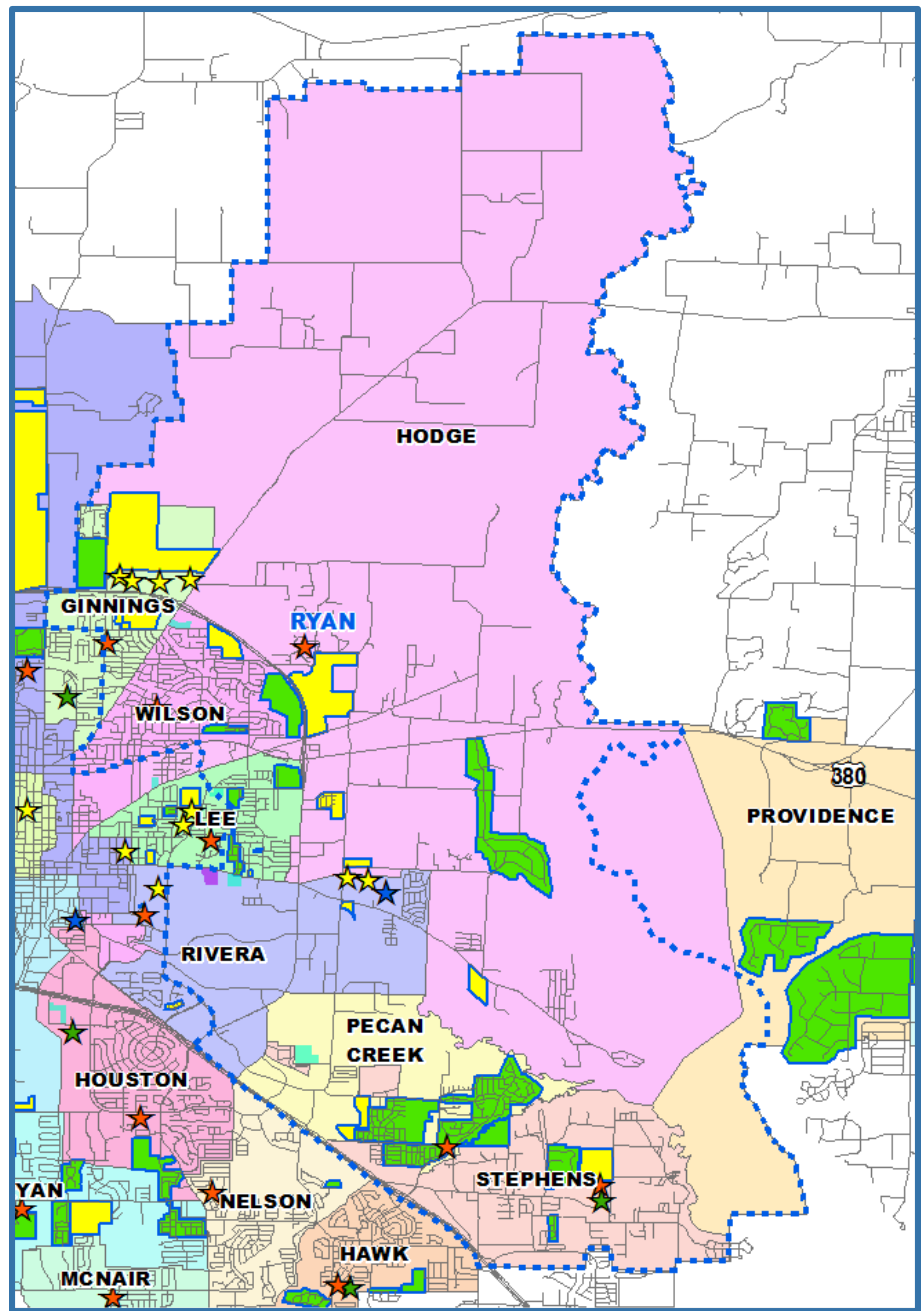
Vertical Zones- Ten Year Forecast

Guyer High School

Campus Name	Capacity	HISTORY	Oct. 2017	ENROLLMENT PROJECTIONS									
		2016/17	2017/18	2018/19	2019/20	2020/21	2021/22	2022/23	2023/24	2024/25	2025/26	2026/27	2027/28
Adkins Elementary School	740	381	386	377	388	389	396	398	408	418	427	428	431
Blanton Elementary School	740	493	489	485	459	465	465	489	491	496	495	491	491
E P Rayzor Elementary School	740	422	395	379	363	360	359	368	365	369	375	375	372
Hawk Elementary School	740	692	672	635	587	556	562	560	572	568	579	581	577
McNair Elementary School	740	587	533	515	475	463	461	455	462	468	475	476	479
Nelson Elementary School	740	637	636	593	577	561	545	525	531	536	537	539	544
ELEMENTARY TOTALS	4,440	3,212	3,111	2,984	2,849	2,794	2,788	2,795	2,829	2,855	2,888	2,890	2,894
Elementary Absolute Change		42	-101	-127	-135	-55	-6	7	34	26	33	2	4
Elementary Percent Change		1.32%	-3.14%	-4.08%	-4.52%	-1.93%	-0.21%	0.25%	1.22%	0.92%	1.16%	0.07%	0.14%
Crownover Middle School	1,181	946	926	933	934	921	851	819	770	765	730	740	767
Harpool Middle School	1,181	983	990	933	944	884	854	799	774	741	759	769	790
MIDDLE SCHOOL TOTALS	2,362	1,929	1,916	1,866	1,878	1,805	1,705	1,618	1,544	1,506	1,489	1,509	1,557
Middle School Absolute Change		8	-13	-50	12	-73	-100	-87	-74	-38	-17	20	48
Middle School Percent Change		0.42%	-0.67%	-2.61%	0.64%	-3.89%	-5.54%	-5.10%	-4.57%	-2.46%	-1.13%	1.34%	3.18%
John Guyer High School	2,140	2,543	2,523	2,591	2,618	2,659	2,717	2,649	2,613	2,514	2,404	2,309	2,239
HIGH SCHOOL TOTALS	2,140	2,543	2,523	2,591	2,618	2,659	2,717	2,649	2,613	2,514	2,404	2,309	2,239
High School Absolute Change		85	-20	68	27	41	58	-68	-36	-99	-110	-95	-70
High School Percent Change		3.46%	-0.79%	2.70%	1.04%	1.57%	2.18%	-2.50%	-1.36%	-3.79%	-4.38%	-3.95%	-3.03%
Guyer High Zone Totals	8,942	7,684	7,550	7,441	7,345	7,258	7,210	7,062	6,986	6,875	6,781	6,708	6,690
Zone Absolute Change		135	-134	-109	-96	-87	-48	-148	-76	-111	-94	-73	-18
Zone Percent Change		1.8%	-1.7%	-1.4%	-1.3%	-1.2%	-0.7%	-2.1%	-1.1%	-1.6%	-1.4%	-1.1%	-0.3%



Ryan High School Zone



Vertical Zones- Ten Year Forecast

Ryan High School

Campus Name	Capacity	HISTORY	Oct. 2017	ENROLLMENT PROJECTIONS									
		2016/17	2017/18	2018/19	2019/20	2020/21	2021/22	2022/23	2023/24	2024/25	2025/26	2026/27	2027/28
Ginnings Elementary School	740	596	568	563	563	571	576	587	607	639	667	688	717
Hodge Elementary School	740	658	582	560	558	563	580	598	634	659	692	718	739
Olive Stephens Elementary School	740	464	446	435	448	448	450	466	465	470	477	477	477
Pecan Creek Elementary School	740	691	703	687	690	712	744	760	776	785	803	823	842
Rivera Elementary School	740	609	604	603	597	610	631	635	635	637	646	648	653
Wilson Elementary School	740	582	600	597	606	617	640	656	656	657	660	653	646
ELEMENTARY TOTALS	4,440	3,600	3,503	3,445	3,462	3,521	3,621	3,702	3,773	3,847	3,945	4,007	4,074
Elementary Absolute Change		-164	-97	-58	17	59	100	81	71	74	98	62	67
Elementary Percent Change		-4.36%	-2.69%	-1.66%	0.49%	1.70%	2.84%	2.24%	1.92%	1.96%	2.55%	1.57%	1.67%
Bette Myers Middle School	1,323	890	772	829	831	822	796	798	795	831	848	849	864
Strickland Middle School	1,334	859	882	889	880	877	889	873	861	886	902	926	960
MIDDLE SCHOOL TOTALS	2,657	1,749	1,654	1,718	1,711	1,699	1,685	1,671	1,656	1,717	1,750	1,775	1,824
Middle School Absolute Change		-55	-95	64	-7	-12	-14	-14	-15	61	33	25	49
Middle School Percent Change		-3.05%	-5.43%	3.87%	-0.41%	-0.70%	-0.82%	-0.83%	-0.90%	3.68%	1.92%	1.43%	2.76%
Fred Moore High School		61	48	48	48	48	48	48	48	48	48	48	48
Ryan High School	2,340	2,061	2,054	1,988	1,951	1,924	1,855	1,866	1,911	1,841	1,839	1,859	1,862
HIGH SCHOOL TOTALS	2,340	2,122	2,102	2,036	1,999	1,972	1,903	1,914	1,959	1,889	1,887	1,907	1,910
High School Absolute Change		-395	-20	-66	-37	-27	-69	11	45	-70	-2	20	3
High School Percent Change		-15.69%	-0.94%	-3.14%	-1.82%	-1.35%	-3.50%	0.58%	2.35%	-3.57%	-0.11%	1.06%	0.16%
Ryan High Zone Totals	9,437	7,471	7,259	7,199	7,172	7,192	7,209	7,287	7,388	7,453	7,582	7,689	7,808
Zone Absolute Change		-614	-212	-60	-27	20	17	78	101	65	129	107	119
Zone Percent Change		-7.6%	-2.8%	-0.8%	-0.4%	0.3%	0.2%	1.1%	1.4%	0.9%	1.7%	1.4%	1.5%

*Yellow box = over stated capacity



Alternate Campus- Ten Year Forecast

Campus Name	Capacity	HISTORY		ENROLLMENT PROJECTIONS									
		2016/17	Oct. 2017 2017/18	2018/19	2019/20	2020/21	2021/22	2022/23	2023/24	2024/25	2025/26	2026/27	2027/28
Ann Windle School For Young Child	740	362	392	392	392	392	392	392	392	392	392	392	392
Gonzalez School For Young Child	740	346	340	340	340	340	340	340	340	340	340	340	340
Denton J J A E P		3	5	5	5	5	5	5	5	5	5	5	5
Juvenile Detention CTR		51	54	54	54	54	54	54	54	54	54	54	54
Lester Davis School		68	58	58	58	58	58	58	58	58	58	58	58
ALTERNATIVE SCHOOL TOTALS		122	117	117	117	117	117	117	117	117	117	117	117
DISTRICT TOTALS	35,412	28,628	29,451	30,013	30,635	31,220	31,883	32,514	33,127	33,677	34,286	34,950	35,623
District Absolute Change		1,069	823	562	622	585	663	631	613	550	609	664	673
District Percent Change		3.9%	2.9%	1.9%	2.1%	1.9%	2.1%	2.0%	1.9%	1.7%	1.8%	1.9%	1.9%





Summary

- Denton's unemployment rate is currently 3.2%.
- In the last 12 months, the highest number of new home sales within Denton ISD have been in the \$250K-\$299K price range
- The Bell and Paloma Creek Elementary zones accounted for nearly 40% of the total district closings in the last 12 months.
- Denton ISD can expect an increase of approximately 3,060 students during the next 5 years.
- 2022/23 enrollment projection: 32,514 students.
- DISD is projected to enroll more than 35,623 students for the 2027/28 school year.