



ADULT EDUCATION AND LITERACY

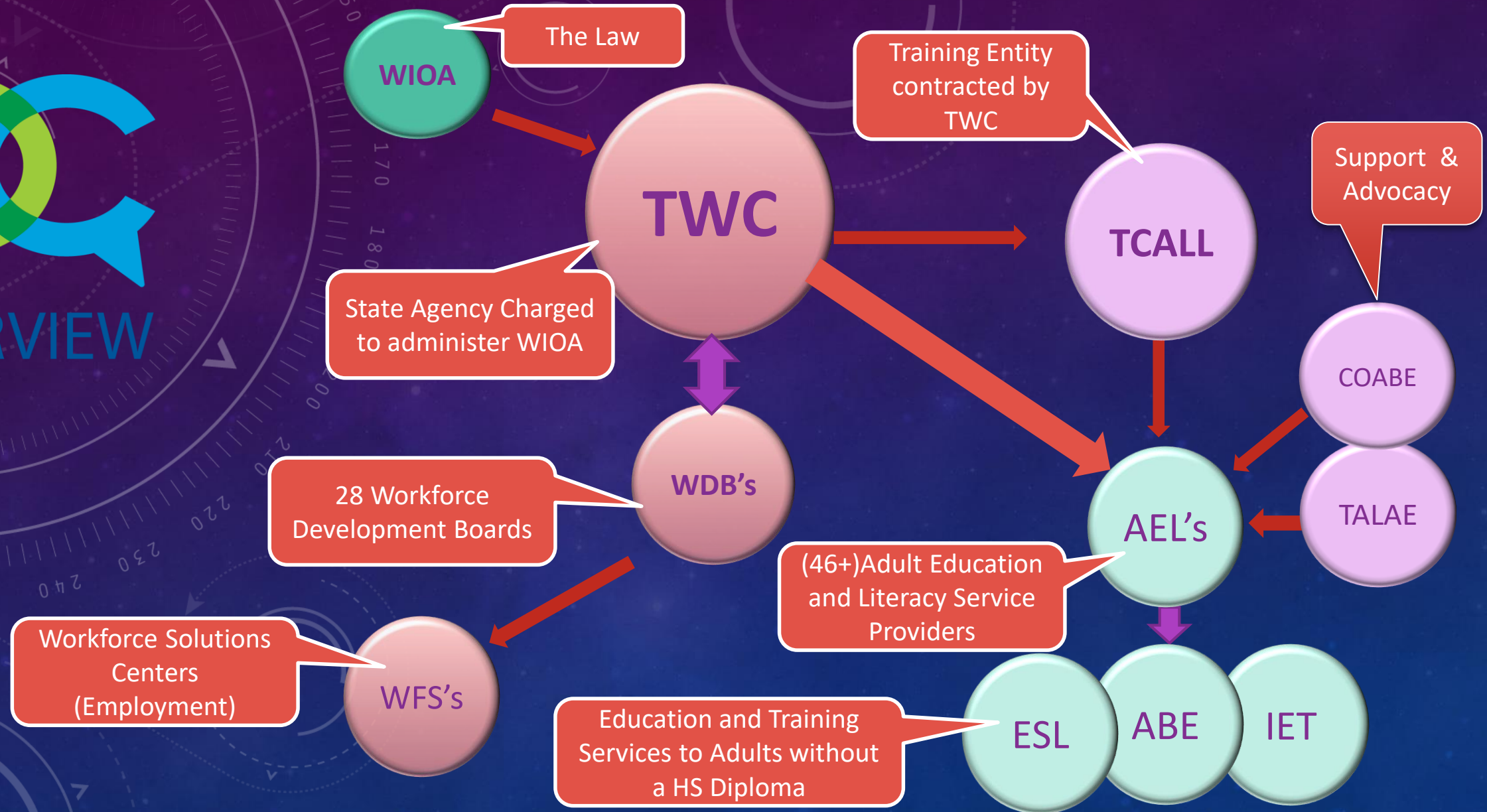
PRESENTED TO DENTON ISD BOARD OF TRUSTEES

OCTAVIANO GARZA

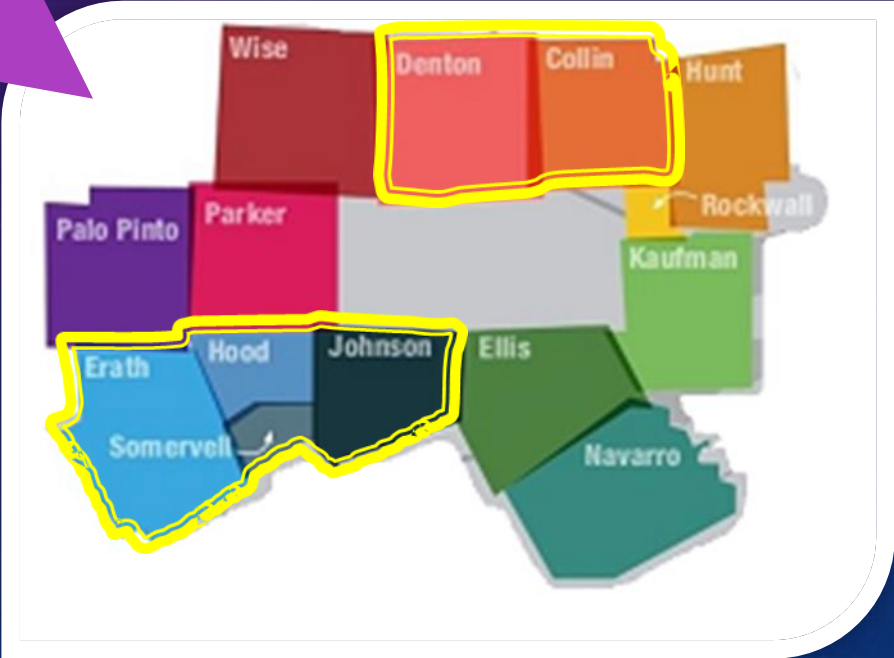
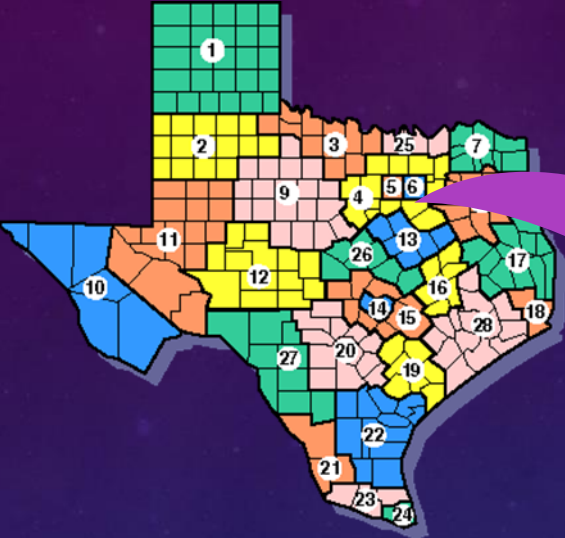
DEC. 11, 2018



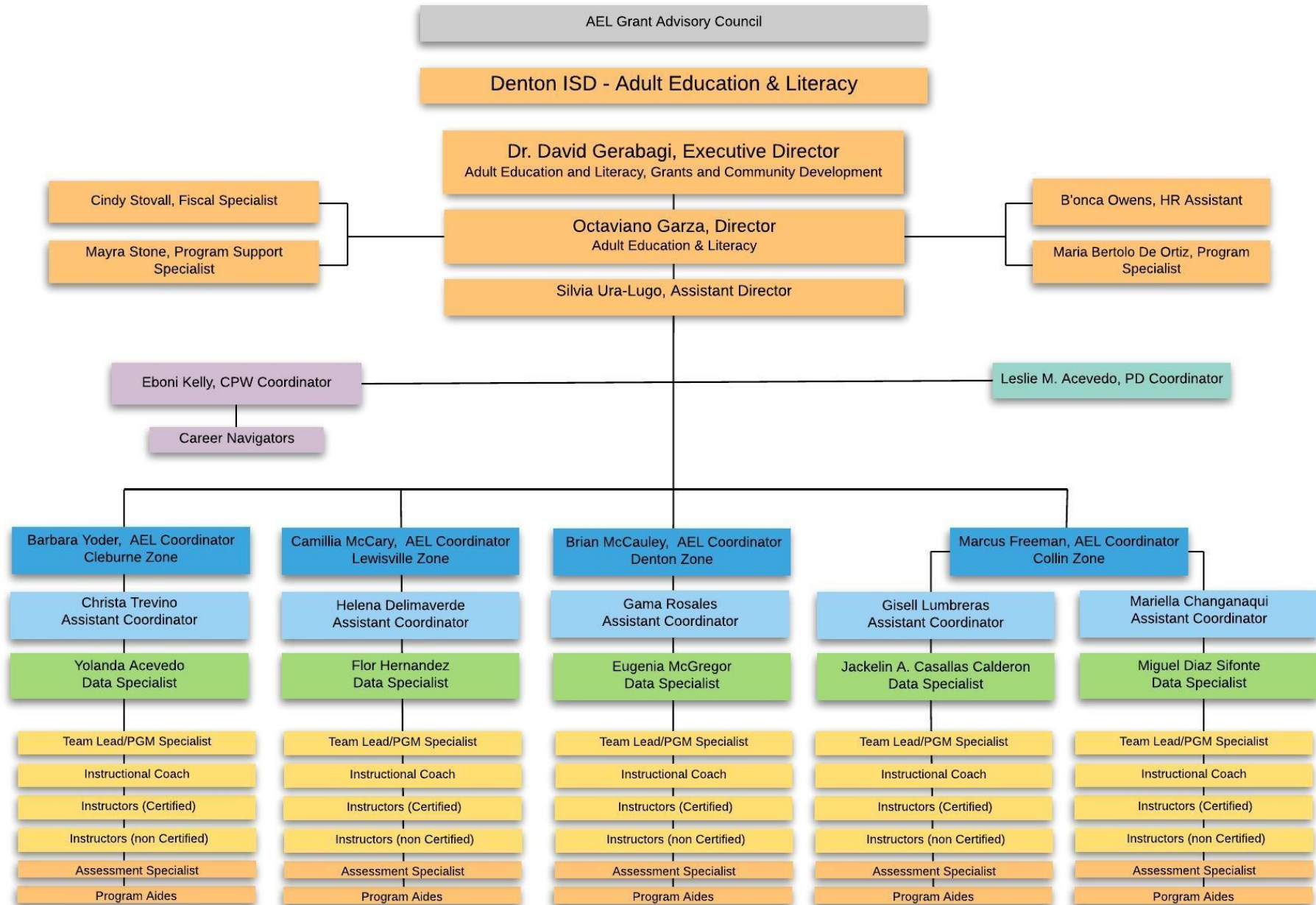
OVERVIEW



SERVICE DELIVERY AREAS



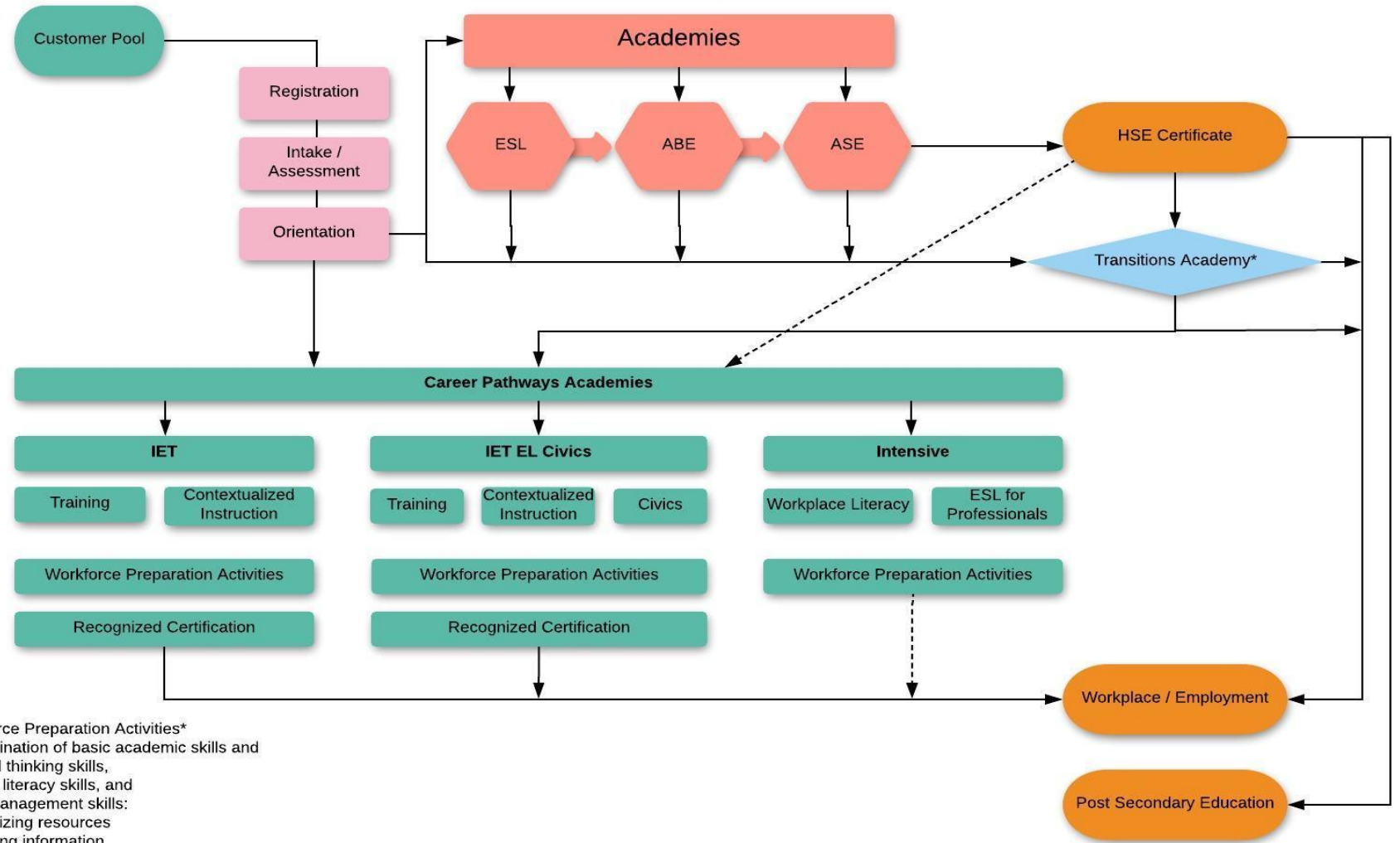
Organization Chart



IET Model



Denton Independent School District
ADULT EDUCATION AND LITERACY
Education and Training Model
P.A.C.E. Program



Workforce Preparation Activities*
 A combination of basic academic skills and

- critical thinking skills,
- digital literacy skills, and
- self-management skills:
 - utilizing resources
 - using information,
 - working with others,
 - understanding systems, and
 - obtaining skills necessary for successful transition into and completion of postsecondary education or training, or employment.

Transition*
 Services or instruction to support individuals transitioning to postsecondary education and training.

CAREER PATHWAYS COURSE OFFERINGS: DENTON & DISD

Advanced Technology Complex

ADOBE Certification

Starting: 1/8/19 to 2/28/19
Class times: 4:30 p.m. - 7:00 p.m.
Class days: Tuesday/Thursday

Starting: 3/19/19 to 5/23/19
Class times: 4:30 p.m. – 7:00 p.m.
Class days: Tuesday/Thursday

CNA

Starting 1/07/19 to 3/12/19
Class time 4:30 – 8:30 p.m.
Class days Monday, Tuesday, Thursday

Emily Fowler Library

English as a Second Language (ESL) for Professionals

Starting: 1/14/19 - 3/19/19
Days: Monday & Tuesday
Times: 9:30 a.m. – 12:00 p.m.

CAREER PATHWAYS COURSE OFFERINGS: COLLEGES

North Central Texas College

- **Certified Nurse Aide**
- *Starting: 2/18/19 to 4/10/19*
Class days: Monday/Wednesday
Class times: 8:30 a.m. -2:00 p.m.
Clinical: April 15th - May 8th
CPR: April 1st
Support Lab to be determined
- **Phlebotomy Technician**
- *Starting: 2/12/19 to 4/30/19*
Class days: Tuesday/Thursday
Class times: 9:30 a.m. -12:30 p.m.
CPR: 4/16
Support Lab to be determined

Hill College

Nurse Aide for Health Care

Starting: 2/4/19 to 4/15/19
Class days: Monday/Tuesday/Wednesday
Class times: 5:00 p.m. -9:00 p.m.
Clinical rotation included

Phlebotomy Technician

Starting: 2/4/19 to 3/20/19
Class days: Monday/Tuesday/Wednesday
Class times: 9:00 p.m. -9:00 p.m.
Clinical Rotation to be determined

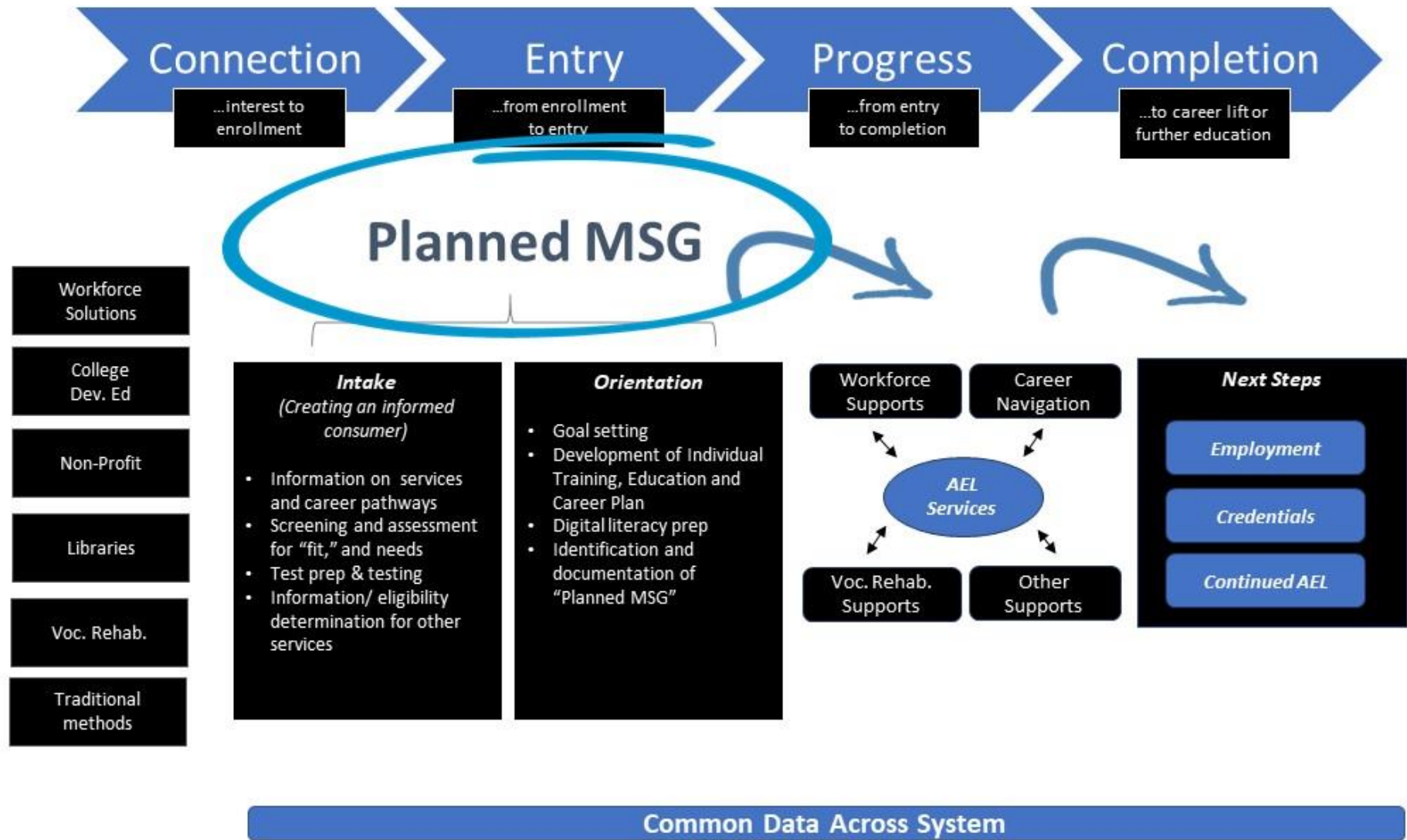
CAREER PATHWAYS WORKPLACE LITERACY OFFERING: **BUSINESSES**

LEADEC/PETERBILT

ESL / HSE /Employee Soft Skills courses coming January 2019!

ABM (Formerly GSC Services)

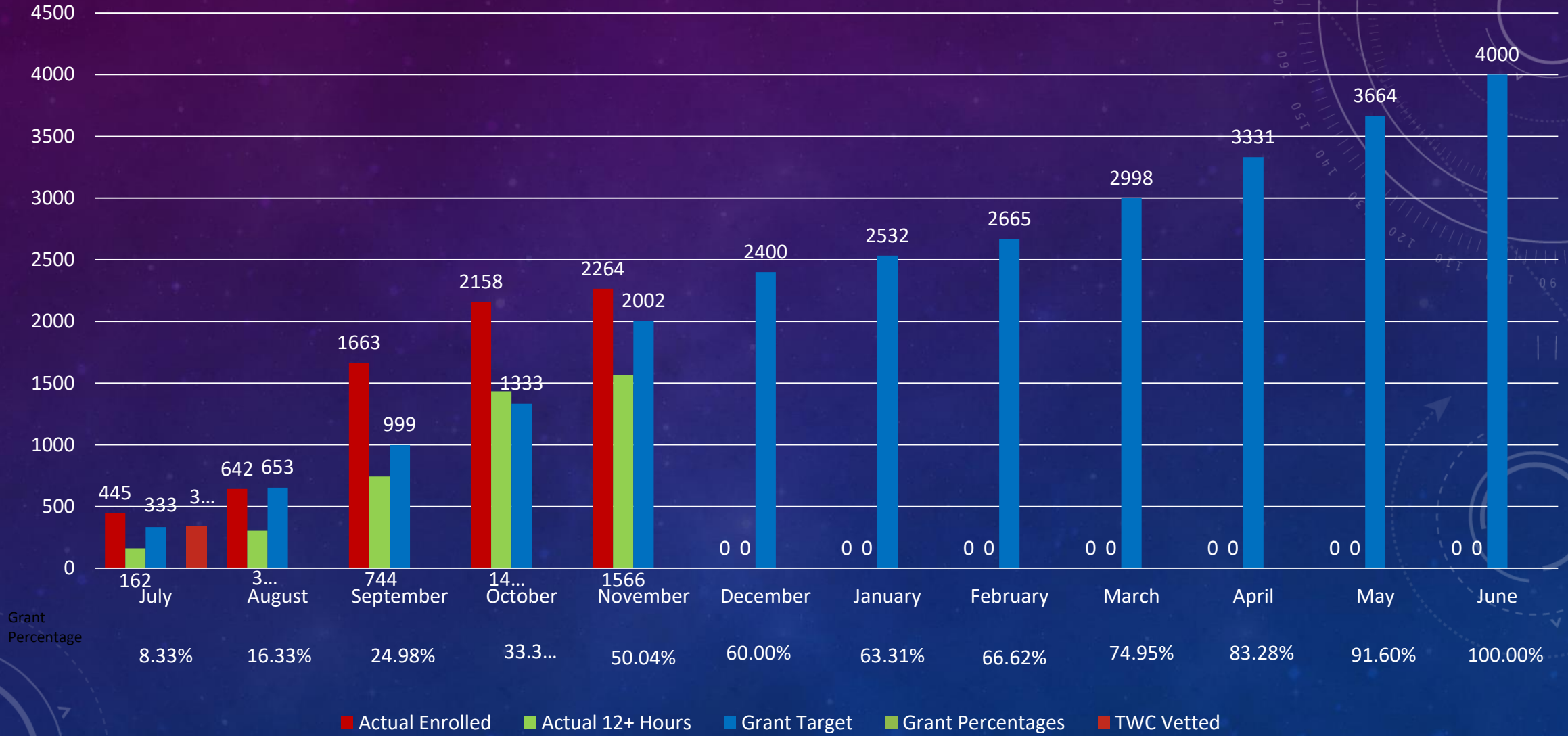
ESL / HSE /Employee Soft Skills courses coming 2019!



PROGRAM TOTALS

Enrollment

July 2018 – June 2019



Grant Percentage

NEW PART TIME SALARY STRUCTURE

Staff Role	Compensation
Certified Teachers	\$30 /hr.
Non-Certified Degreed Teachers	\$26 /hr.
Career Navigators	\$30/hr.
Team Leads	\$30/hr.
Instructional Coaches	\$30/hr.
Assessment & Intake Specialists	\$14/hr.
Program Aides	\$13/hr.

PROFESSIONAL DEVELOPMENT

All AEL funded employees must attend at least 15 hours of Professional Development annually to remain eligible and work with the program.

PARTNERSHIPS



29 School Districts



Community Colleges

8 Churches



1 Community Based Organization



4 Businesses



10 Public Libraries



6 Counties and 20 Cities

CHALLENGES AND OPPORTUNITIES

Challenges

Staff Attrition
Student Enrollment
Student Retention
IET's
Time
Capacity Building

- Professional Development

Opportunities

Benefits:

- Human Capital
- Social Capital
- Psychosocial Capital
- Sustain and Improve Society
- Relatively Low Cost
- Self Sufficiency
- Individual Financial Outcomes
- Parental Support
- Health and Wellbeing
- Reduced Crime
- Breaking Cycles of Poverty and Educational Barriers